



UTILUX BI-METAL CRIMP LINKS BK TYPE

KEY FEATURES

- Suitable for aluminium to copper in line terminations
- Friction welded
- Manufactured for high purity copper and aluminium rod
- Prefilled with joint compound
- Individually packed in sealed plastic
- Alternative sizes made to order

Utilux is a brand that has built an enviable reputation for high quality, reliable electrical connectors. For over 90 years, this dynamic Australian brand has been a leader in the field of interconnection systems.

Our aim is to provide the best possible products and services to keep our customers at the cutting edge of industry standards - internationally.

You can be sure that Utilux branded products are fabricated from the finest materials and produced to exacting tolerances. They represent the latest technology and the best design for the tasks they are required to perform.

Utilux is a leading brand of electrical connectors sold to original equipment manufacturers and electrical distribution companies throughout Australia, New Zealand and Asia. A comprehensive range, the most up to date production technology and the highest quality control standards ensure that there are Utilux connectors, of optimum reliability and durability, for all major power distribution applications.

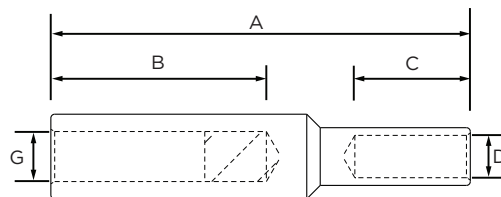
As part of the worlds largest electrical connector company, TE Connectivity, the development of products is an ongoing commitment. It is done on a global basis, utilising the talents of many people throughout the organisation to ensure a global product for a local market.

Customers can count on consistent, high quality products, driven by TE's proven innovation and backed by our extraordinary customer support.

UTILUX BI-METAL CRIMP LINKS

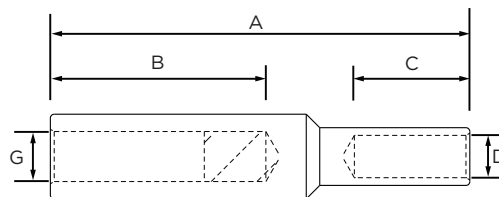


Copper to aluminium terminations can be made with the Utilux range of Bi-Metal products. Under normal conditions, when copper comes into contact with aluminium electrolytic corrosion may result, enhanced by the presence of oxygen. The Bi-metal range includes lugs and links for both round and sector conductor. Included in the range are links for joining different sized aluminium conductor to copper conductor.



PRODUCT SELECTION INFORMATION											
Catalogue Number	Aluminium					Crimp Die	Copper				Crimp Die
	Conductor Area (mm ²)	Stranding Metric	Dimensions (mm)				Conductor Area (mm ²)	Stranding Metric	Dimensions (mm)		
			A	B	G				C	D	
BK16-10	16	7/1.70	70	32	5.5	38-90AL	10	7/1.35	21.5	4.5	38-92CU
BK16-16	16	7/1.70	70	32	5.5	38-90AL	16	7/1.70	21.5	5.5	38-92CU
BK25-16	25	7/2.14	70	32	7	38-90AL	16	7/1.70	21.5	5.5	38-92CU
BK25-25	25	7/2.14	70	32	7	38-90AL	25	19/1.35	21.5	7	38-92CU
BK35-16	35	19/1.53	70	32	8.5	38-90AL	16	7/1.70	21.5	5.5	38-92CU
BK35-25	35	19/1.53	70	32	8.2	38-132AL	25	19/1.35	21.5	7	38-92CU
BK35-35	35	19/1.35	70	32	8.2	38-132AL	35	19/1.53	21.5	8.5	38-92CU
BK35-41	35	19/1.35	70	32	8.5	38-132AL	41	19/1.63	22	9	38-92CU
BK35-95	35	19/1.53	90	32	8.5	38-90AL	95	19/2.52	40	13	38-165CU, 40-165CU
BK50-16	50	19/1.78	70	32	9.5	38-132AL	16	7/1.70	22	5.5	38-92CU
BK50-25	50	19/1.78	70	32	9.5	38-132AL	25	7/2.14	21.1	7	38-92CU
BK50-35	50	19/1.78	70	32	9.5	38-132AL	35	19/1.53	21.5	8.5	38-92CU
BK50-50	50	19/1.78	70	32	9.5	38-132AL	50	19/1.78	21.5	9.5	38-115CU
BK70-16	70	19/2.14	70	32	11	38-132AL	16	7/1.70	21.5	5.5	38-92CU
BK70-25	70	19/2.14	70	32	11	38-132AL	25	19/1.35	21.5	7	38-92CU
BK70-35	70	19/2.14	70	32	11	38-132AL	35	19/1.55	21.5	8.5	38-92CU
BK70-50	70	19/2.14	70	32	11	38-132AL	50	19/1.78	21.5	9.5	38-115CU
BK70-70	70	19/2.14	70	32	11	38-132AL	70	19/2.14	21.5	11	38-115CU
BK95-16	95	19/2.52	100	60	13	38-173AL, 40-172AL	16	7/1.70	21.5	5.5	38-92CU
BK95-25	95	19/2.52	110	60	13	38-173AL, 40-172AL	25	19/1.35	32	7	38-92CU
BK95-35	95	19/2.52	100	60	13	38-173AL, 40-172AL	35	19/1.53	21.5	8.5	38-92CU
BK95-50	95	19/2.52	100	60	13	38-173AL, 40-172AL	50	19/1.78	21.5	9.5	38-115CU
BK95-70	95	19/2.52	110	60	13	38-173AL, 40-172AL	70	19/2.14	32	11	38-115CU
BK95-95	95	19/2.52	120	60	13	38-173AL, 40-172AL	95	37/1.78	40	13	38-165CU, 40-165CU
BK120-25	120	37/2.03	100	60	15	38-173AL, 40-172AL	25	19/1.35	21.5	7	38-92CU
BK120-70	120	37/2.03	100	60	15	38-173AL, 40-172AL	70	19/2.14	21.5	11	38-115CU
BK120-95	120	37/2.03	120	60	15	38-173AL, 40-172AL	95	37/1.78	40	13	38-165CU, 40-165CU
BK120-120	120	37/2.03	120	60	15	38-173AL, 40-172AL	120	37/2.03	40	15	38-165CU, 40-165CU
BK120-185	120	37/2.03	120	70	18.5	38-173AL, 40-172AL	185	37/2.52	40	21	38-200CU, 40-200CU

UTILUX BI-METAL CRIMP LINKS

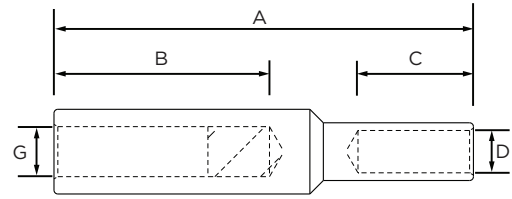


PRODUCT SELECTION INFORMATION											
Catalogue Number	Aluminium					Crimp Die	Copper				Crimp Die
	Conductor Area (mm ²)	Stranding Metric	Dimensions (mm)				Conductor Area (mm ²)	Stranding Metric	Dimensions (mm)		
			A	B	G				C	D	
BK150-25	150	37/2.25	100	60	16.5	38-220AL, 40-220AL	25	7/2.14	21.5	7	38-92CU
BK150-120	150	37/2.25	120	60	16.5	38-220AL, 40-220AL	120	37/2.03	40	15	38-165CU, 40-165CU
BK150-150	150	37/2.25	120	60	16.5	38-220AL, 40-220AL	150	37/2.25	40	16.5	38-200CU, 40-200CU
BK150-185	150	37/2.25	120	60	16.5	38-220AL, 40-220AL	185	37/2.52	40	18.4	38-200CU, 40-200CU
BK185-25	185	37/2.52	100	60	18.5	38-220AL, 40-220AL	25	7/2.14	21.5	7	38-92CU
BK185-35	185	37/2.52	100	60	18.5	38-220AL, 40-220AL	35	19/1.53	21.5	8.5	38-92CU
BK185-50	185	37/2.52	100	60	18.5	38-220AL, 40-220AL	50	19/1.78	21.5	9.5	38-115CU
BK185-95	185	37/2.52	120	60	18.5	38-220AL, 40-220AL	95	19/2.52	40	13	38-165CU, 40-165CU
BK185-120	185	37/2.52	120	60	18.5	38-220AL, 40-220AL	120	37/2.03	40	15	38-165CU, 40-165CU
BK185-150	185	37/2.52	120	60	18.5	38-220AL, 40-220AL	150	37/2.25	40	16.5	38-200CU, 40-200CU
BK185-185	185	37/2.52	120	60	18.5	38-220AL, 40-220AL	185	37/2.52	40	18.4	38-200CU, 40-200CU
BK185-240	185	37/2.52	120	60	18.5	38-220AL, 40-220AL	240	61/2.25	40	21	38-200CU, 40-200CU
BK240-70	240	61/2.25	105	60	21	38-284AL, 40-283AL	70	19/2.14	24	11	38-165CU, 40-165CU
BK240-95	240	61/2.25	120	60	21	38-284AL, 40-283AL	95	19/2.52	40	13	38-165CU, 40-165CU
BK240-120	240	61/2.25	120	60	21	38-284AL, 40-283AL	120	37/2.03	40	15	38-165CU, 40-165CU
BK240-161	240	61/2.25	120	60	21	38-284AL, 40-283AL	161	37/2.36	40	17	38-200CU, 40-200CU
BK240-185	240	61/2.25	120	60	21	38-284AL, 40-283AL	185	37/2.52	40	18.4	38-200CU, 40-200CU
BK240-240	240	61/2.25	120	60	21	38-284AL, 40-283AL	240	61/2.25	40	21	38-260CU, 40-260CU
BK240-300	240	61/2.25	120	60	21	38-284AL, 40-283AL	300	61/2.52	40	23.5	40-260CU
BK300-70	300	61/2.52	103	60	23.5	38-284AL, 40-283AL	70	19/2.14	21.5	11	38-115CU
BK300-95	300	61/2.52	123	60	23.5	38-284AL, 40-283AL	95	19/2.52	40	13	38-165CU, 40-165CU
BK300-120	300	61/2.52	123	60	23.5	38-284AL, 40-283AL	120	37/2.03	40	15	38-165CU, 40-165CU
BK300-150	300	61/2.52	118	60	23.5	38-284AL, 40-283AL	150	37/2.25	40	16.5	38-200CU, 40-200CU
BK300-185	300	61/2.52	118	60	23.5	38-284AL, 40-283AL	185	37/2.52	40	18.4	38-200CU, 40-200CU
BK300-240	300	61/2.52	120	60	23.5	38-284AL, 40-283AL	240	61/2.25	40	21	38-260CU, 40-260CU
BK300-300	300	61/2.52	120	60	23.5	38-284AL, 40-283AL	300	61/2.52	40	23.5	38-260CU, 40-260CU

UTILUX BI-METAL CRIMP LINKS



Copper to aluminium terminations can be made with the Utilux range of Bi-Metal products. Under normal conditions, when copper comes into contact with aluminium electrolytic corrosion may result, enhanced by the presence of oxygen. The Bi-metal range includes lugs and links for both round and sector conductor. Included in the range are links for joining different sized aluminium conductor to copper conductor.



PRODUCT SELECTION INFORMATION											
Catalogue Number	Aluminium			Crimp Die		Copper				Crimp Die	
	Conductor Area (mm ²)	Stranding Metric	Dimensions (mm)			Conductor Area (mm ²)	Stranding Metric	Dimensions (mm)			
			A	B	G			C	D		
BK400-95	400	61/2.85	135	70	26.5	40-390AL	95	19/2.52	40	13	38-165CU, 40-165CU
BK400-185	400	61/2.85	135	70	26.5	40-390AL	185	37/2.52	40	18.4	38-200CU, 40-200CU
BK400-240	400	61/2.85	135	70	26.5	40-390AL	240	61/2.25	40	21	38-260CU, 40-260CU
BK400-300	400	61/2.85	155	70	26.5	40-390AL	300	61/2.52	55	23.5	38-260CU, 40-260CU
BK400-400	400	61/2.85	155	70	26.5	40-390AL	400	61/2.85	58	26.5	40-310CU
BK500-185	500	61/3.20	135	70	29.5	40-390AL	185	37/2.52	40	18.4	38-200CU, 40-200CU
BK500-300	500	61/3.20	138	70	29.5	40-390AL	300	61/2.52	40	23.5	38-260CU, 40-260CU
BK500-400	500	61/3.20	155	70	29.5	40-390AL	400	61/2.85	58	26.5	40-310CU
BK500-500	500	61/3.20	155	70	29.5	40-390AL	500	61/3.20	58	29.5	40-310CU
BK500-630	500	61/3.20	165	70	29.5	40-390AL	630	127/2.52	60	33.5	40-370CU
BK630-500	630	127/2.52	160	70	33.5	40-432AL	500	61/3.20	60	29.5	40-310CU
BK630-630	630	127/2.52	160	70	33.5	40-432AL	630	127/3.20	60	33.5	40-370CU

te.com/energy

©2016 TE Connectivity Ltd. family of companies. All Rights Reserved. EPP-2487-DDS31-AU-2/16

Utilux, TE Connectivity and TE Connectivity (logo) are trademarks. Other logos, product and/or company names might be trademarks of their respective owners. While TE has made every reasonable effort to ensure the accuracy of the information in this brochure, TE does not guarantee that it is error-free, nor does TE make any other representation, warranty or guarantee that the information is accurate, correct, reliable or current. TE reserves the right to make any adjustments to the information contained herein at any time without notice. TE expressly disclaims all implied warranties regarding the information contained herein, including, but not limited to, any implied warranties of merchantability or fitness for a particular purpose. The dimensions in this catalog are for reference purposes only and are subject to change without notice. Specifications are subject to change without notice. Consult TE for the latest dimensions and design specifications.

FOR MORE INFORMATION:

TE Customer Support Centers

NSW/QLD/NT/ACT: +61 (2) 9554 2695
 VIC/TAS/SA: +61 (3) 9271 5243
 WA: +61 (8) 9358 7806
 New Zealand: +64 (9) 634 4580