

UTILUX BI-METAL SECTOR CRIMP LUGS 3 & 4 CORE BGS TYPE

KEY FEATURES

- Suitable for 3 or 4 core solid sector cable
- Clear markings on the barrel indicate the crimping sequence
- Friction welded
- For aluminium to copper termination and manufactured from high purity copper and aluminium rod
- Pre-filled with jointing compound
- Individually packed in sealed plastic

Utilux is a brand that has built an enviable reputation for high quality, reliable electrical connectors. For over 90 years, this dynamic Australian brand has been a leader in the field of interconnection systems.

Our aim is to provide the best possible products and services to keep our customers at the cutting edge of industry standards - internationally.

You can be sure that Utilux branded products are fabricated from the finest materials and produced to exacting tolerances. They represent the latest technology and the best design for the tasks they are required to perform.

Utilux is a leading brand of electrical connectors sold to original equipment manufacturers and electrical distribution companies throughout Australia, New Zealand and Asia. A comprehensive range, the most up to date production technology and the highest quality control standards ensure that there are Utilux connectors, of optimum reliability and durability, for all major power distribution applications.

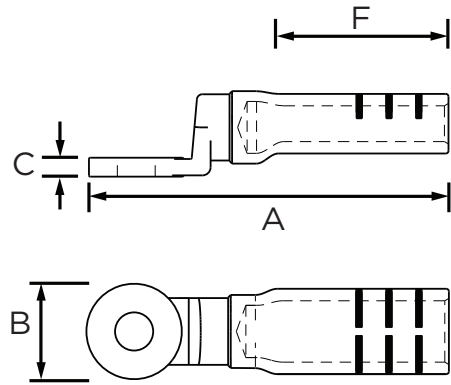
As part of the worlds largest electrical connector company, TE Connectivity, the development of products is an ongoing commitment. It is done on a global basis, utilising the talents of many people throughout the organisation to ensure a global product for a local market.

Customers can count on consistent, high quality products, driven by TE's proven innovation and backed by our extraordinary customer support.

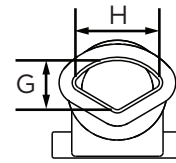
UTILUX BI-METAL SECTOR CRIMP LUGS



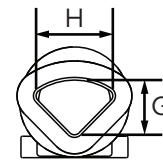
Copper to aluminium terminations can be made with the Utilux range of Bi-Metal products. Under normal conditions, when copper comes into contact with aluminium electrolytic corrosion may result, enhanced by the presence of oxygen. Utilux Bi-metal lugs have the copper friction welded to the aluminium. The friction welding process eliminates the presence of oxygen and therefore eliminates electrolytic corrosion. The welding process also maximises the strength of the joint.



3 CORE SECTOR PRODUCT SELECTION INFORMATION										
Catalogue Number	Conductor Area (mm ²)	Stud Size	Dimensions (mm)						38 Dies	
			A	B	C	F	G	H	Nest	Indent
BGS3I120MB	120	MB	112	30	6	51	10.7	18.1	12	16
BGS3I120M12	120	M12	112	30	6	51	10.7	18.1	12	16
BGS3I150MB	150	MB	118	35	7	51	11.9	20.2	12	17
BGS3I150M12	150	M12	118	35	7	51	11.9	20.2	12	17
BGS3I185MB	185	MB	128	35	7	59	13.2	22.5	12	18
BGS3I185M12	185	M12	128	35	7	59	13.2	22.5	12	18
BGS3I240MB	240	MB	133	35	7	63	15.2	25.8	12	19
BGS3I240M12	240	M12	133	35	7	63	15.2	25.8	12	19
BGS3I240M16	240	M16	133	35	7	63	15.2	25.8	12	19
BGS3I300MB	300	MB	142	35	7	63	17.0	28.8	12	21



4 CORE SECTOR PRODUCT SELECTION INFORMATION										
Catalogue Number	Conductor Area (mm ²)	Stud Size	Dimensions (mm)						38 Dies	
			A	B	C	F	G	H	Nest	Indent
BGS4I120MB	120	MB	112	30	6	51	12.5	17.5	14	16
BGS4I120M12	120	M12	112	30	6	51	12.5	17.5	14	16
BGS4I150MB	150	MB	118	35	7	51	14.0	19.6	14	17
BGS4I150M12	150	M12	118	35	7	51	14.0	19.6	14	17
BGS4I185MB	185	MB	128	35	7	59	15.4	21.6	14	18
BGS4I185M12	185	M12	128	35	7	59	15.4	21.6	14	18
BGS4I240MB	240	MB	130	35	7	59	17.4	24.0	14	19
BGS4I240ETM12	240	M12	130	35	7	59	17.4	24.0	14	19
BGS4I240M16	240	M16	130	35	7	59	17.4	24.0	14	19
BGS4I300MB	300	MB	147	42	7	63	19.8	27.7	15	21
BGS4I300M16	300	M16	147	42	7	63	19.8	27.7	15	21



ET - Electro tinned finish

Note stud size "MB" means blank palm

te.com/energy

©2016 TE Connectivity Ltd. family of companies. All Rights Reserved. EPP-2487-DDS25-AU-2/16

Utilux, TE Connectivity and TE Connectivity (logo) are trademarks. Other logos, product and/or company names might be trademarks of their respective owners. While TE has made every reasonable effort to ensure the accuracy of the information in this brochure, TE does not guarantee that it is error-free, nor does TE make any other representation, warranty or guarantee that the information is accurate, correct, reliable or current. TE reserves the right to make any adjustments to the information contained herein at any time without notice. TE expressly disclaims all implied warranties regarding the information contained herein, including, but not limited to, any implied warranties of merchantability or fitness for a particular purpose. The dimensions in this catalog are for reference purposes only and are subject to change without notice. Specifications are subject to change without notice. Consult TE for the latest dimensions and design specifications.

FOR MORE INFORMATION:

TE Customer Support Centers

NSW/QLD/NT/ACT:	+61 (2) 9554 2695
VIC/TAS/SA:	+61 (3) 9271 5243
WA:	+61 (8) 9358 7806
New Zealand:	+64 (9) 634 4580