



Raychem CSJA JCN/EG In-line Cold Shrinkable Joint for 1/C Jacketed Concentric Neutral Cables (15-35 kV)

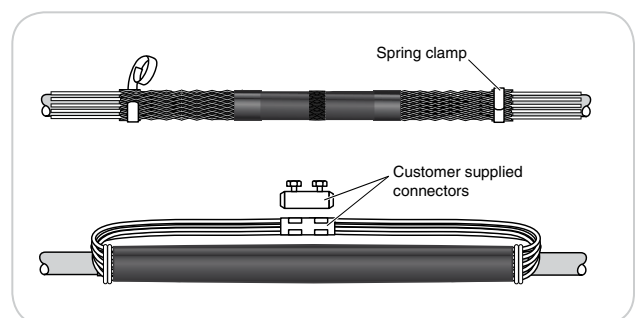
KEY FEATURES

- This cable joint has a pre-expanded EPDM re-jacketing sleeve and an integrated neutral sock. The “All-in-One” design is easy to install with minimal steps and short installation time.
- A pre-expanded, single piece silicone rubber joint body with high mechanical expansion capability allows a wide application range.
- An ergonomically designed spiral holdout provides a smooth installation with low release forces.
- Total length of the splice body on the holdout ranges from 14 to 19 inches providing a compact design.

TE Connectivity’s (TE) “All-in-One” CSJA cold shrinkable joint for 15 kV through 35 kV is designed to splice jacketed concentric neutral (JCN) cables.

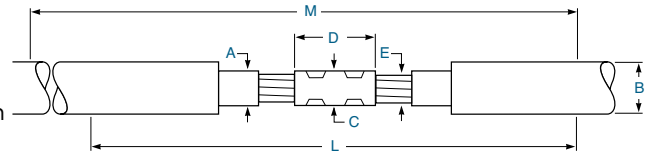
Additional Features

- The silicone rubber body provides high dielectric strength, high tear strength, low tension set, and excellent low temperature recovery.
- Integrated electrical stress control enhanced by factory molded stress cones and a Faraday cage.
- Void filling stress relief mastics are not necessary.
- Proven shield continuity concept. The neutral wires are connected externally. The integrated pre-expanded neutral sock is connected to the neutral wires by a constant force spring. This provides the metallic shielding system to the cable joint.



Raychem
from TE Connectivity

- The joint accepts both mechanical and compression connectors.
- Meets IEEE-404 requirements for 15 kV through 35 kV.
- Each silicone splice body is factory tested to include AC withstand and partial discharge in accordance with IEEE-404 production tests.



Product Selection Information: Dimensions in inches (millimeters)

Voltage Class	Catalog Number	Nominal Cable Range	Min/Max Insulation OD		Max Jacket OD		Connector Dimensions Max. OD Max. Length		Kit Installed Length	Required Installation Space
			A	B	C	D	L	M		
CSJA JCN/EG Joint without Connector										
15 kV	CSJA-JCN/EG-1511	#2 - 350	0.69 - 1.20 (17.5 - 30.5)	1.50 (38.1)	1.30 (33.0)	5.50 (140.0)	29 (737)	37 (940)		
15 kV	CSJA-JCN/EG-1512	4/0 - 750	0.87 - 1.40 (22.1 - 35.6)	1.80 (46.0)	1.50 (38.0)	5.50 (140.0)	29 (737)	37 (940)		
15kV	CSJA-JCN/EG-1513	350 - 1000	1.03 - 1.58 (26.2 - 40.0)	2.05 (52.1)	1.65 (42.0)	6.69 (170.0)	33 (838)	41 (1041)		
15 kV	CSJA-JCN/EG-1514	750 - 1250	1.28 - 2.05 (32.50 - 52.0)	2.60 (66.0)	1.85 (47.0)	7.90 (200.0)	37 (939)	48 (1219)		
28 kV	CSJA-JCN/EG-2812	#1 - 500	0.87 - 1.40 (22.1 - 35.6)	1.80 (46.0)	1.50 (38.0)	5.50 (140.0)	29 (737)	37 (940)		
28 kV	CSJA-JCN/EG-2813	4/0 - 750	1.03 - 1.58 (26.20 - 40.0)	2.05 (52.1)	1.65 (42.0)	6.69 (170.0)	33 (838)	41 (1041)		
28 kV	CSJA-JCN/EG-2814	500 - 1250	1.28 - 2.05 (32.50 - 52.0)	2.60 (66.0)	1.85 (47.0)	7.90 (200.0)	37 (939)	48 (1219)		
35 kV	CSJA-JCN/EG-3513	1/0 - 350	1.03 - 1.49 (26.20 - 37.8)	2.05 (52.1)	1.40 (35.6)	5.50 (140.0)	33 (838)	41 (1041)		
35 kV	CSJA-JCN/EG-3514	350 - 1000	1.36 - 2.05 (34.54 - 52.0)	2.6 (66.0)	1.96 (50.0)	7.90 (200.0)	37 (939)	48 (1219)		
35 kV	CSJA-JCN/EG-3515	750 - 1250	1.63 - 2.36 (41.40 - 60.0)	2.6 (66.0)	2.36 (60.0)	7.90 (200.0)	37 (939)	48 (1219)		

Voltage Class	Catalog Number	Nominal Cable Range	Min/Max Insulation OD		Max Jacket OD	Min/Max Diameter Over Cable Conductor*	Kit Installed Length	Required Installation Space
			A	B				
CSJA JCN/EG Joint with Copper Mechanical ShearBolt Connector								
15 kV	CSJA-JCN/EG-1511M1	2/0 - 350	0.69 - 1.20 (17.5 - 30.5)	1.50 (38.1)	1.50 (38.1)	0.376 - 0.736 (9.50 - 18.7)	29 (737)	37 (940)
15 kV	CSJA-JCN/EG-1512M1	4/0 - 500	0.87 - 1.40 (22.1 - 35.6)	1.80 (46.0)	1.80 (46.0)	0.376 - 0.736 (9.50 - 18.7)	29 (737)	37 (940)
15 kV	CSJA-JCN/EG-1512M2	350 - 750	0.87 - 1.40 (22.1 - 35.6)	1.80 (46.0)	1.80 (46.0)	0.570 - 0.945 (14.5 - 24.0)	29 (737)	37 (940)
15 kV	CSJA-JCN/EG-1513M2	350 - 750	1.03 - 1.58 (26.2 - 40.0)	2.05 (52.1)	2.05 (52.1)	0.570 - 0.945 (14.5 - 24.0)	33 (838)	41 (1041)
28 kV	CSJA-JCN/EG-2812M1	2/0 - 500	0.87 - 1.40 (22.1 - 35.6)	1.80 (46.0)	1.80 (46.0)	0.376 - 0.736 (9.50 - 18.7)	29 (737)	37 (940)
28 kV	CSJA-JCN/EG-2813M2	350 - 750	1.03 - 1.58 (26.2 - 40.0)	2.05 (52.1)	2.05 (52.1)	0.570 - 0.945 (14.5 - 24.0)	33 (838)	41 (1041)
28 kV	CSJA-JCN/EG-2814M2	500 - 750	1.28 - 2.05 (32.50 - 52.0)	2.60 (66.0)	2.60 (66.0)	0.570 - 0.945 (14.5 - 24.0)	37 (939)	48 (1219)
35 kV	CSJA-JCN/EG-3513M1	2/0 - 350	1.03 - 1.49 (26.20 - 37.8)	2.05 (52.1)	2.05 (52.1)	0.376 - 0.736 (9.50 - 18.7)	33 (838)	41 (1041)
35 kV	CSJA-JCN/EG-3514M2	350 - 750	1.36 - 2.05 (34.54 - 52.0)	2.60 (66.0)	2.60 (66.0)	0.570 - 0.945 (14.5 - 24.0)	37 (939)	48 (1219)

* Min/max diameter over cable conductor accepted by the copper mechanical connector.

Voltage Class	Catalog Number	Nominal Cable Range	Min/Max Insulation OD		Max Jacket OD	Min/Max Diameter Over Cable Conductor*	Kit Installed Length	Required Installation Space
			A	B				
CSJA JCN/EG Joint with Aluminum Mechanical ShearBolt Connector								
15 kV	CSJA-JCN/EG-1511M4	#2 - 3/0	0.69 - 1.20 (17.5 - 30.5)	1.50 (38.1)	1.50 (38.1)	0.268 - 0.470 (6.80 - 11.9)	29 (737)	37 (940)
15 kV	CSJA-JCN/EG-1511M5	#2 - 350	0.69 - 1.20 (17.5 - 30.5)	1.50 (38.1)	1.50 (38.1)	0.268 - 0.681 (6.80 - 17.3)	29 (737)	37 (940)
15 kV	CSJA-JCN/EG-1512M6	4/0 - 500	0.87 - 1.40 (22.1 - 35.6)	1.80 (46.0)	1.80 (46.0)	0.423 - 0.813 (10.7 - 20.6)	29 (737)	37 (940)
15 kV	CSJA-JCN/EG-1512M7	500 - 750	0.87 - 1.40 (22.1 - 35.6)	1.80 (46.0)	1.80 (46.0)	0.736 - 0.998 (18.7 - 25.3)	29 (737)	37 (940)
15 kV	CSJA-JCN/EG-1513M8	350 - 750	1.03 - 1.58 (26.20 - 40.0)	2.05 (52.1)	2.05 (52.1)	0.616 - 0.998 (15.7 - 25.3)	33 (838)	41 (1041)
15 kV	CSJA-JCN/EG-1514M9	750 - 1000	1.28 - 2.05 (32.50 - 52.0)	2.60 (66.0)	2.60 (66.0)	0.813 - 1.152 (20.6 - 29.2)	37 (939)	48 (1219)
28 kV	CSJA-JCN/EG-2812M5	#1 - 350	0.87 - 1.40 (22.1 - 35.6)	1.80 (46.0)	1.80 (46.0)	0.268 - 0.681 (6.80 - 17.3)	29 (737)	39 (990)
28 kV	CSJA-JCN/EG-2812M6	4/0 - 500	0.87 - 1.40 (22.1 - 35.6)	1.80 (46.0)	1.80 (46.0)	0.423 - 0.813 (10.7 - 20.6)	29 (737)	39 (990)
28 kV	CSJA-JCN/EG-2813M8	350 - 750	1.03 - 1.58 (26.20 - 40.0)	2.05 (52.1)	2.05 (52.1)	0.616 - 0.998 (15.7 - 25.3)	33 (838)	41 (1041)
28 kV	CSJA-JCN/EG-2814M8	500 - 750	1.28 - 2.05 (32.50 - 52.0)	2.60 (66.0)	2.60 (66.0)	0.616 - 0.998 (15.7 - 25.3)	37 (939)	48 (1219)
28 kV	CSJA-JCN/EG-2814M9	750 - 1000	1.28 - 2.05 (32.50 - 52.0)	2.60 (66.0)	2.60 (66.0)	0.813 - 1.152 (20.60 - 29.2)	37 (939)	48 (1219)
35 kV	CSJA-JCN/EG-3513M5	1/0 - 350	1.03 - 1.49 (26.20 - 37.8)	2.05 (52.1)	2.05 (52.1)	0.268 - 0.681 (6.8 - 17.3)	33 (838)	41 (1041)
35 kV	CSJA-JCN/EG-3514M8	350 - 750	1.36 - 2.05 (34.54 - 52.0)	2.60 (66.0)	2.60 (66.0)	0.616 - 0.998 (15.7 - 25.3)	37 (939)	48 (1219)
35 kV	CSJA-JCN/EG-3514M9	750 - 1000	1.36 - 2.05 (34.54 - 52.0)	2.60 (66.0)	2.60 (66.0)	0.813 - 1.152 (20.60 - 29.2)	37 (939)	48 (1219)
35 kV	CSJA-JCN/EG-3515M9	750 - 1000	1.63 - 2.36 (41.40 - 60.0)	2.60 (66.0)	2.60 (66.0)	0.813 - 1.152 (20.60 - 29.2)	37 (939)	48 (1219)
35 kV	CSJA-JCN/EG-3515M10	1000 - 1250	1.63 - 2.36 (41.40 - 60.0)	2.60 (66.0)	2.60 (66.0)	1.060 - 1.251 (23.0 - 31.7)	37 (939)	48 (1219)

* Min/max diameter over cable conductor accepted by the aluminum mechanical connector.

TE Technical Support Center

- USA: +1 (800) 327-6996
- Canada: +1 (905) 475-6222
- Mexico: +52 (0) 55-1106-0800
- Latin/S. America: +54 (0) 11-4733-2200
- UK: +44 (0) 800-267666
- France: +33 (0) 1-3420-8686
- Netherlands: +31 (0) 73-6246-999
- China: +86 (0) 400-820-6015

energy.te.com

© 2006 - 2010, 2012 Tyco Electronics Corporation, a TE Connectivity Ltd. Company. All Rights Reserved.

1773453-3 E313 04/2012
Raychem, TE Connectivity and TE connectivity (logo) are trademarks. Other logos, product and/or company names might be trademarks of their respective owners.

Ordering Information

1. Selections are based on the typical dimensions of 100% insulated cables, manufactured in accordance with AEIC standard. Nominal insulation thickness (100%): 15 kV:175mils, 25 kV:260mils, 35 kV:345mils.
2. Select the appropriate catalog number. Use the insulation OD, jacket OD and the neutral sock equivalent range as the final ordering criteria. To ensure proper parking diameter, calculate jacket OD with concentric neutrals folded back over jacket.
3. For mechanical shear bolt connector included in the kit confirm the correct connector selection according to the Min/Max diameter over the cable conductor from the tables.

4. For other applications or if you have any questions, contact your TE representative.
5. Standard package: 1 kit per box.
6. Related test reports: EDR-5430, EDR-5455
7. For AL Mechanical ShearBolt connector information request datasheet 9-1773440-4 and for CU request 165972.



While TE has made every reasonable effort to ensure the accuracy of the information in this brochure, TE does not guarantee that it is error-free, nor does TE make any other representation, warranty or guarantee that the information is accurate, correct, reliable or current. TE reserves the right to make any adjustments to the information contained herein at any time without notice. TE expressly disclaims all implied warranties regarding the information contained herein, including, but not limited to, any implied warranties of merchantability or fitness for a particular purpose. The dimensions in this catalog are for reference purposes only and are subject to change without notice. Specifications are subject to change without notice. Consult TE for the latest dimensions and design specifications.