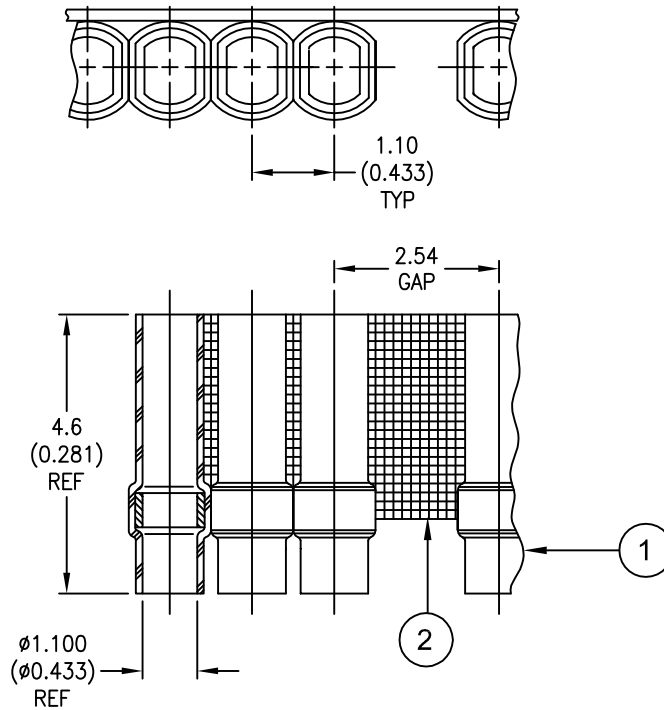


# CUSTOMER DRAWING



**MATERIALS**

1. SOLDERSLLEEVE: D-141-0226. Quantity Per Assembly: 1000
2. CARRIER STRIP: Adhesive Coated High Temperature Tape

**APPLICATION**

1. This part is designed for use on CTM-1050 and CTM-1052 splice connector.
2. Sleeves are to be installed using Raychem-approved convection or infrared heating tools.
3. The carrier strip is to be removed upon completion of termination.

If this document is printed it becomes uncontrolled. Check for the latest revision

© 2008 Tyco Electronics Corporation. All Rights Reserved.

<b style="font-size: 1.2em;">Tyco Electronics</b>		Tyco Electronics 305 Constitution Dr Menlo Park, CA 94025, U.S.A	TITLE: <b style="font-size: 1.1em;">SOLDERSLEEVES ON TAPE</b>			
Unless otherwise specified, dimensions are in millimeters. [Inches dimensions are shown in brackets]		<b style="font-size: 1.1em;">Raychem Devices</b>	DOCUMENT NUMBER: <b style="font-size: 1.1em;">D-700-0040</b>			
TOLERANCES: 0.00 N/A 0.0 N/A 0 N/A	ANGLES: N/A ROUGHNESS IN MICRON	Tyco Electronics reserves the right to amend this drawing at any time. Users should evaluate the suitability of the product for their application.		REV: <b style="font-size: 1.2em;">A</b>	DATE: <b style="font-size: 1.1em;">06-Aug-08</b>	
DRAWN BY: <b style="font-size: 1.1em;">A. BUI</b>	CAGE CODE: <b style="font-size: 1.1em;">06090</b>	REPLACES: -----	ECO NUMBER: <b style="font-size: 1.1em;">08-019937</b>	SCALE: <b style="font-size: 1.2em;">NONE</b>	SIZE: <b style="font-size: 1.1em;">A</b>	SHEET: <b style="font-size: 1.1em;">1 OF 1</b>