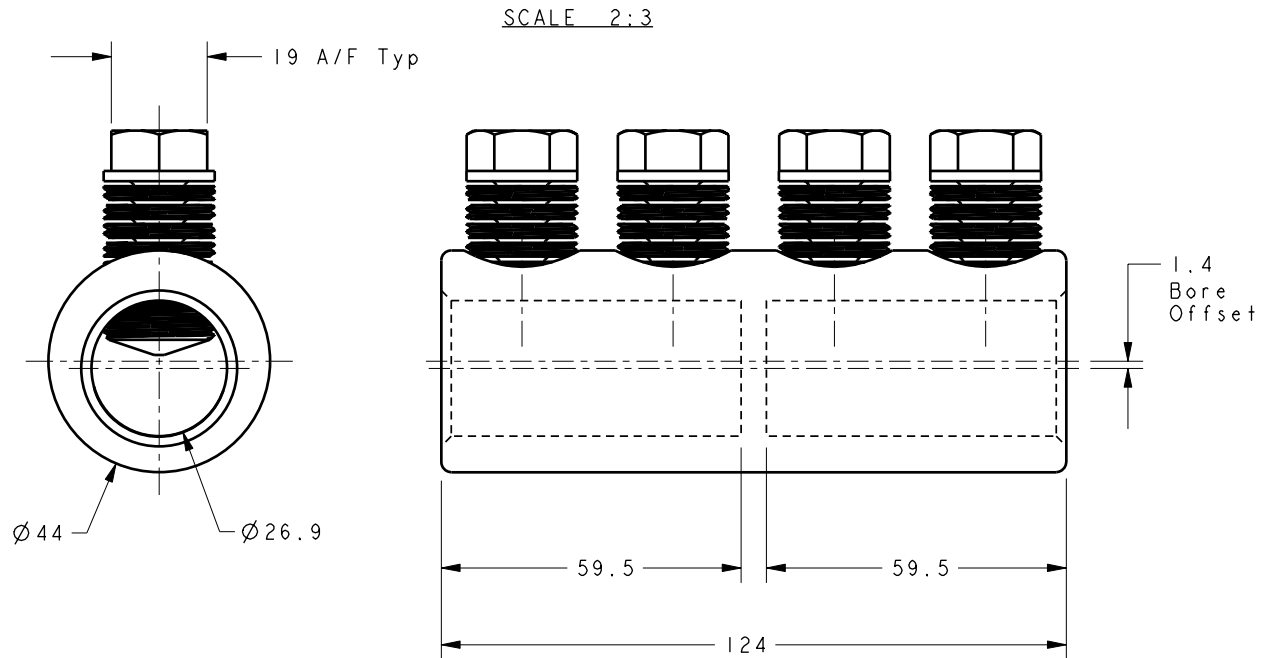
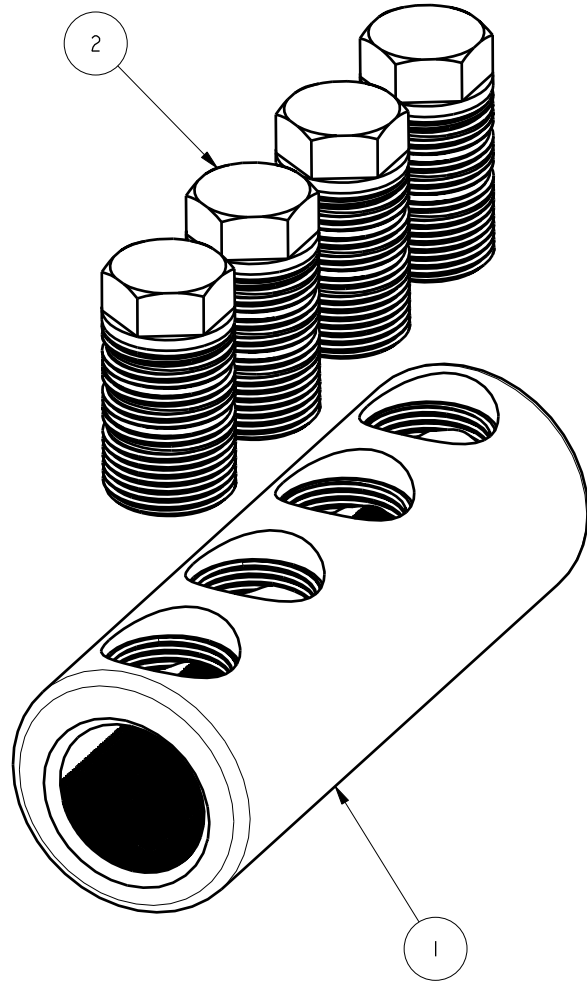


ITEM	PART/DRG NO	QTY	DESCRIPTION
1	01-209-0048	1	11kV ALUMINIUM STRAIGHT BLOCKED CONNECTOR BODY - SOLID TYPE 44.0 O/D 26.9 I/D
2	01-701-0029	4	M22x1.5 19 A/F 44.5 LONG BRASS MULTI-SHEAR BOLT



SCALE 2:3

Issued to: Commercial Quality Stores Production

tyco
Electronics
(B&H)

Tyco Electronics UK Ltd
Aldridge Site
Middlemore Lane West
Aldridge
West Midlands WS9 8EA
Phone: +44(0)1922 743993
Fax: +44(0)1922 744150

Material **VARIES**
Finish **NATURAL**
Tolerances (UOS) \pm -
B&H Short Desc. **HVSTM22SOUTC**

IF IN DOUBT ASK - DO NOT SCALE
Part Description
11kV ALUMINIUM STRAIGHT BLOCKED CONNECTOR - SOLID TYPE - 44.0 O/D 26.9 I/D

B	PART No WAS HVSTM22SOUTC, DRG No WAS S19-A01-A04	S.P.W	9.4.02
A	FIRST ISSUE	S.P.W	14.8.00
Revision	Description	Name	Date
Design/Drawn	S.P.WEST	Date	14-Aug-00
Checked by	Approved by	Scale (UOS)	4:5
Drawing/Part No.	02-209-0052	Drawing Type	ASSEMBLY
			A4
			Revision B