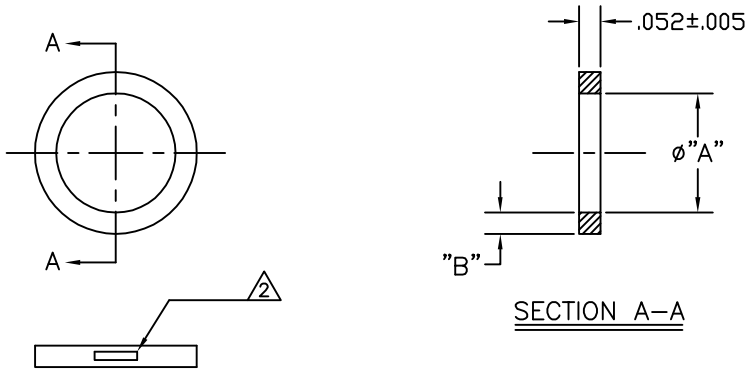


REVISIONS			
LTR	DESCRIPTION	DATE	APPROVED
C	SEE ECO NO. 5579	10/20/87	G.LEE
D	REDRAWN PER ECO NO. 4250	6/16/94	M.BOWER
E	REVISED PER DCR NO. AD96555	1/14/97	GMR
F	REVISED PER ECO-09-002060	1/26/09	A. BUI



PRODUCT DESCRIPTION △	"A" DIAMETER			
	MINIMUM AS SUPPLIED	MAXIMUM FREE RECOVERED	MINIMUM AS INSTALLED	"B" AS SUPPLIED
TC02AI	.250	.239	.243	.045 .052
TC03AI	.3125	.298	.303	.050 .058

NOTES:

- MATERIAL IS TO BE TINEL[®] ALLOY X.
- △ THE OUTSIDE SURFACE OF THE RING IS MARKED WITH TWO STRIPS OF THERMOCHROMIC PAINT WHICH CHANGE COLOR WHEN THE APPROPRIATE INSTALLATION TEMPERATURE IS REACHED.
- △ QQB BRAID DESIGNATIONS RECOMMENDED IN THE RAYCHEM TINEL-LOCK SELECTION GUIDE MSG-101. 30 AWG BRAID MAY NOT BE USED FOR THESE SIZES.
- WHEN RINGS ARE USED FOR BRAID TERMINATION, DESIGN THE SUBSTRATE PER DRAWING NO. CH00-0157-006.

△ PART NUMBER ORDERING INFORMATION: TC 02 A I

PRODUCT DESIGNATOR _____

SIZE DESIGNATOR _____

BRAID DESIGNATOR: _____

A: SINGLE LAYER 36 AWG BRAID △

I: WITH INSULATING LINING _____

UNLESS OTHERWISE SPECIFIED DIMENSIONS ARE IN INCHES. AND TOLERANCES ARE: DEC .XXX ± .005 DEC .XX ± .01 ANGLE ± 2°	DRW	R. GOULET	DATE	94 JUN 13
	CHECKED	RIOS	DATE	5/5/87
	APPROVED	LEE	DATE	5/5/87
	APPROVED	MELTON	DATE	5/5/87
MATERIAL	SEE NOTE 1			
WEIGHT	____ LBS [____ G]			
THIRD ANGLE PROJECTION				

CUSTOMER DRAWING

		RAYCHEM ADAPTER 300 CONSTITUTION DRIVE MENLO PARK, CALIFORNIA 94025	
TITLE			
TINEL-LOCK RING			
SIZE	CODE IDENT. NO.	DWG. NO.	REV
C	06090	925177	F
SCALE NONE		DO NOT SCALE THIS DRAWING	
		SHEET 1 OF 1	

SHEET 925177 DWG. NO.