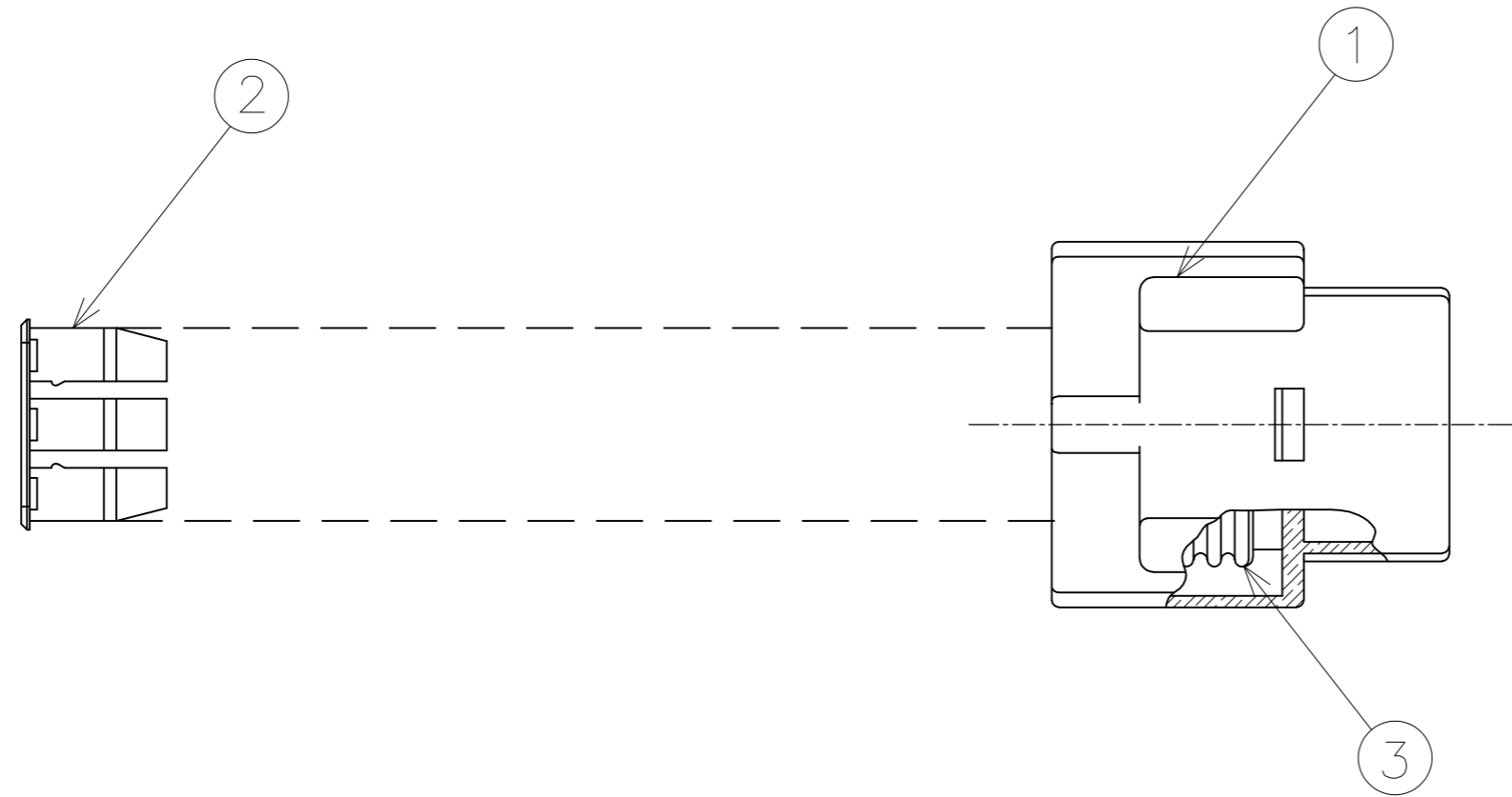
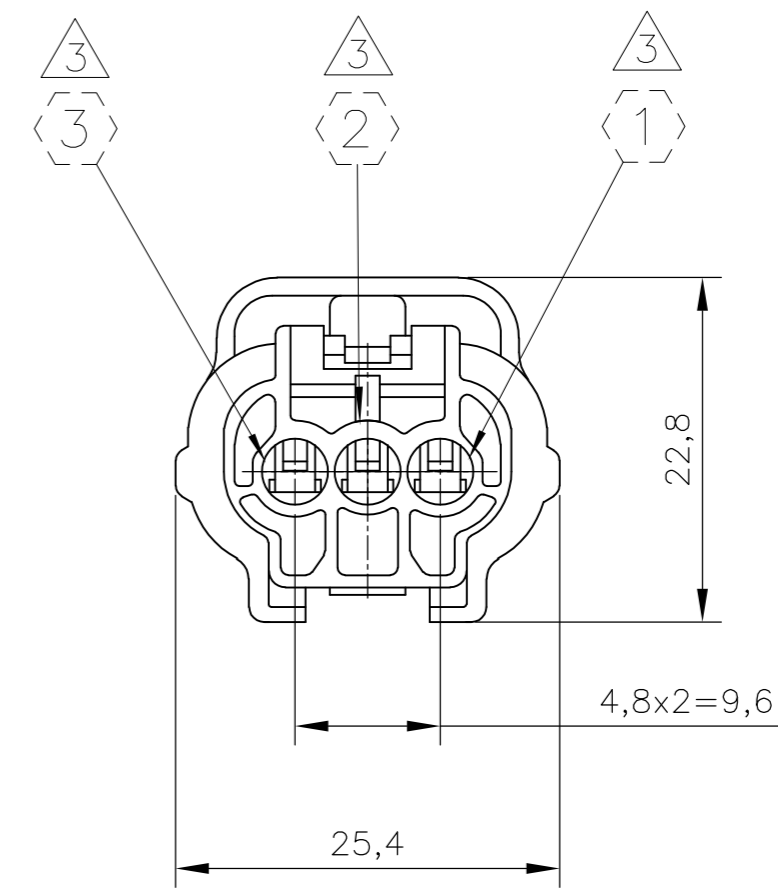
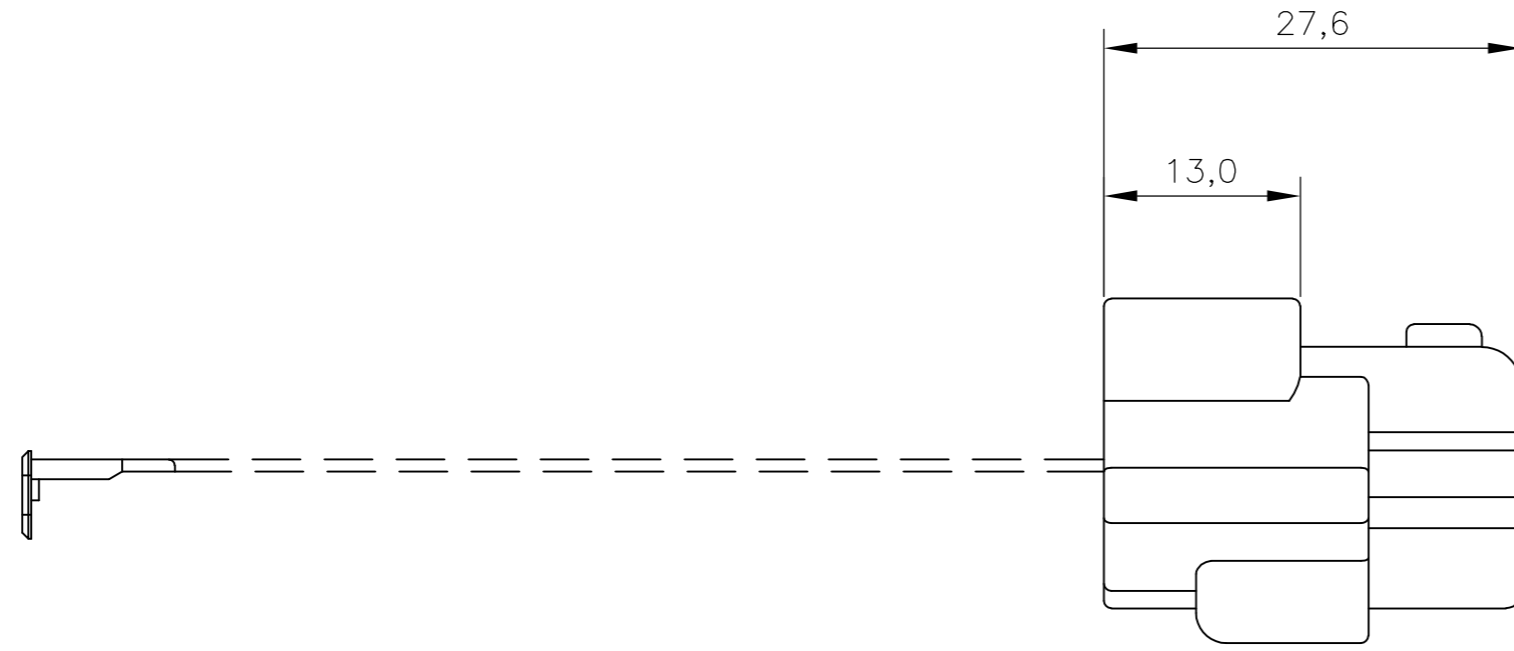


THIS DRAWING IS UNPUBLISHED. RELEASED FOR PUBLICATION
 © COPYRIGHT - By - ALL RIGHTS RESERVED.

LOC	DIST	REVISIONS					
AP	-	P	LTR	DESCRIPTION	DATE	DWN	APVD
		A1		REVISED DESIGN ECO-12-009584	24MAY2012	EGS	GOJ
		A2		REVISED DESIGN ECO-16-002381	26FEB2016	LAA	GOJ



- 1 - OS ITENS 1 e 2 DEVEM SER FORNECIDOS DESMONTADOS
ITENS 1 AND 2 MUST BE SUPPLIED NOT ASSEMBLED
- 2 - OS ITENS 1 e 3 DEVEM SER FORNECIDOS MONTADOS
ITENS 1 AND 3 MUST BE SUPPLIED ASSEMBLED
- ⊠ - INDICAÇÃO DE CIRCUITO
CIRCUIT INDICATION

4 - CONTRA-PEÇA: VER DESENHO PN 881774
 COUNTER-PART: SEE DRAWING PN 881774

SELOS RECOMENDADOS
 RECOMMENDED WIRE SEALS

PART NUMBER	DESCRIÇÃO DESCRIPTION	WIRE RANGE	INSULATION RANGE	MATERIAL	ACABAMENTO FINISH
172748-1	SINGLE WIRE SEAL	CAVITY PLUG	CAVITY PLUG	SILICONE / SILICON	PRETO/BLACK
172748-2	SINGLE WIRE SEAL	CAVITY PLUG	CAVITY PLUG	SILICONE / SILICON	CINZA/GRAY
444430-1	SINGLE WIRE SEAL	0,5 TO 1,5mm ²	∅ 1,4 TO 2,4mm	SILICONE / SILICON	MARROM/BROWN

TERMINAIS RECOMENDADOS
 RECOMMENDED TERMINALS

PART NUMBER	DESCRIÇÃO DESCRIPTION	WIRE RANGE	INSULATION RANGE	MATERIAL	ACABAMENTO FINISH
880694-1	TERMINAL 1.8 ECONOSEAL "J" SERIES MARKII REC	0,5 TO 1,0mm ²	∅ 1,4 TO 2,0mm	LATÃO/BRASS	PRÉ ESTANHADO/PRE TIN
880694-2	TERMINAL 1.8 ECONOSEAL "J" SERIES MARKII REC	0,5 TO 1,0mm ²	∅ 1,4 TO 2,0mm	BRONZE	PRÉ ESTANHADO/PRE TIN
880697-1	TERMINAL 1.8 ECONOSEAL "J" SERIES MARKII REC	0,5 TO 1,0mm ²	∅ 1,4 TO 2,4mm	LATÃO/BRASS	PRÉ ESTANHADO/PRE TIN
880697-2	TERMINAL 1.8 ECONOSEAL "J" SERIES MARKII REC	0,5 TO 1,0mm ²	∅ 1,4 TO 2,4mm	BRONZE	PRÉ ESTANHADO/PRE TIN
880697-3	TERMINAL 1.8 ECONOSEAL "J" SERIES MARKII REC	0,5 TO 1,0mm ²	∅ 1,4 TO 2,4mm	LATÃO/BRASS	PRÉ PRATEADO/PRE SILVER
880698-1	TERMINAL 1.8 ECONOSEAL "J" SERIES MARKII REC	1,0 TO 1,5mm ²	∅ 1,4 TO 2,4mm	LATÃO/BRASS	PRÉ ESTANHADO/PRE TIN
880698-2	TERMINAL 1.8 ECONOSEAL "J" SERIES MARKII REC	1,0 TO 1,5mm ²	∅ 1,4 TO 2,4mm	BRONZE	PRÉ ESTANHADO/PRE TIN

REQ. PER ASSY	ITEM NO	DESCRIÇÃO DESCRIPTION	MATERIAL	ACABAMENTO FINISH	
	1	3	SEAL RING	SILICONE/SILICON	PRETO / BLACK
	1	2	DOUBLE LOCK, 3 POSN. ECONOSEAL "J" MARK II	PBT	AMARELO / YELLOW
	1	1	PLUG HSG, 3 POSN. ECONOSEAL "J" MARK II	PBT	PRETO / BLACK
881775	-1				

THIS DRAWING IS A CONTROLLED DOCUMENT.

DIMENSIONS: mm	TOLERANCES UNLESS OTHERWISE SPECIFIED: 0 PLC ± - 1 PLC ± 0,3 2 PLC ± - 3 PLC ± - 4 PLC ± - ANGLES ± 1°	DWN NCLapresa 18MAY2011 CHK José R. Goldschmidt 20MAY2011 APVD Mauricio Gisoldi 20MAY2011 PRODUCT SPEC APPLICATION SPEC		
MATERIAL VER TABELA	FINISH VER TABELA	WEIGHT -	SIZE A2	CAGE CODE 00779
CUSTOMER DRAWING		SCALE 2:1	DRAWING NO C=881775	SHEET 1 of 1

CAD
 DO NOT REVISE
 EXCEPT BY CAD