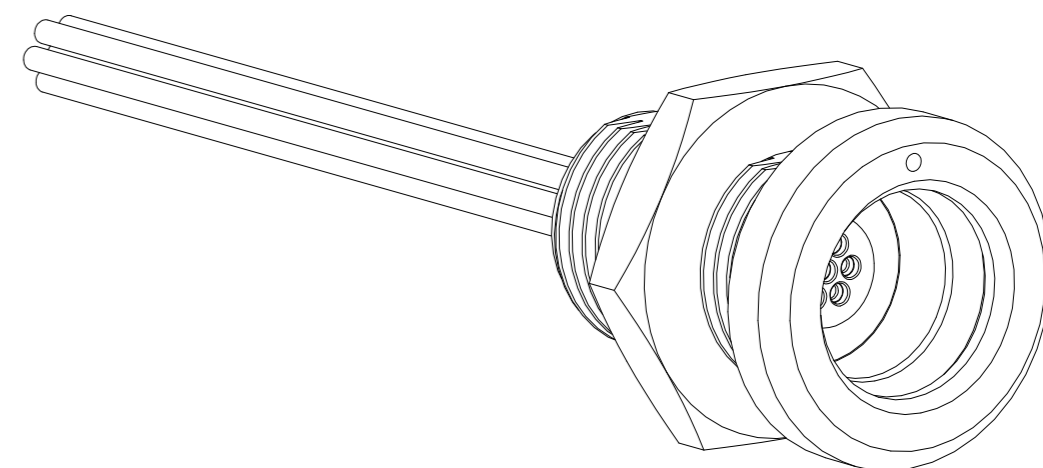
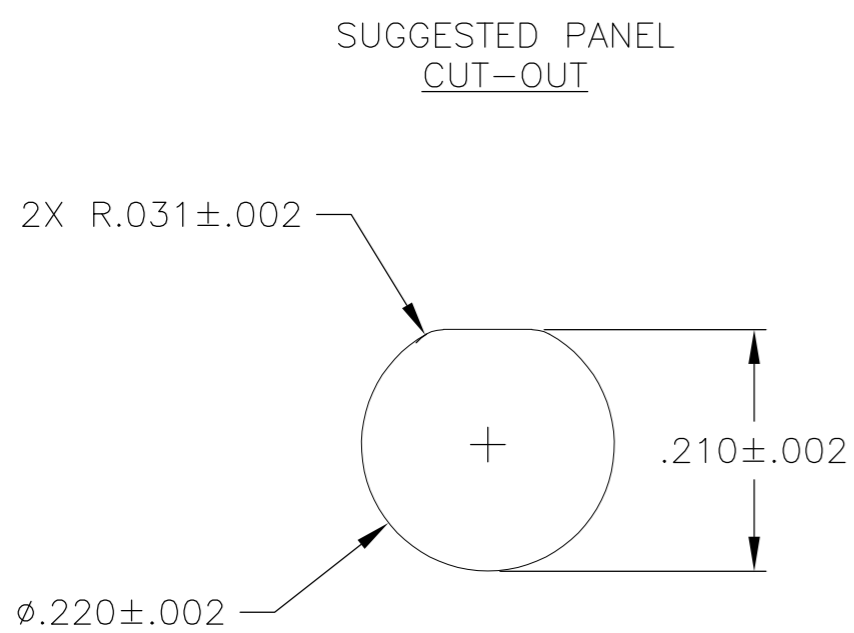
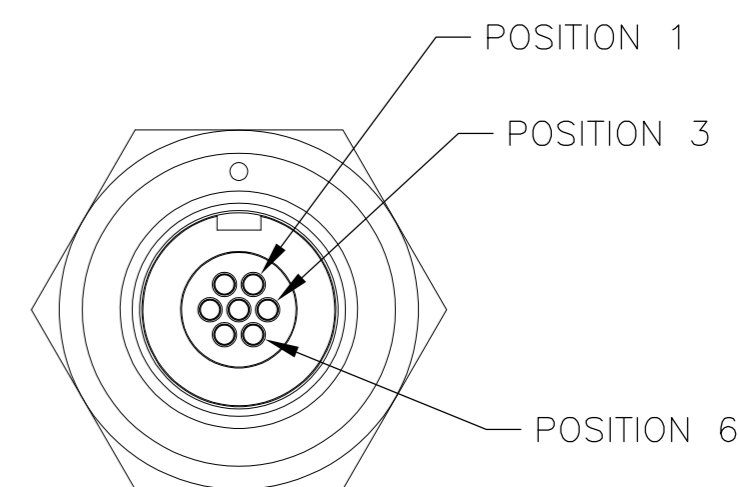
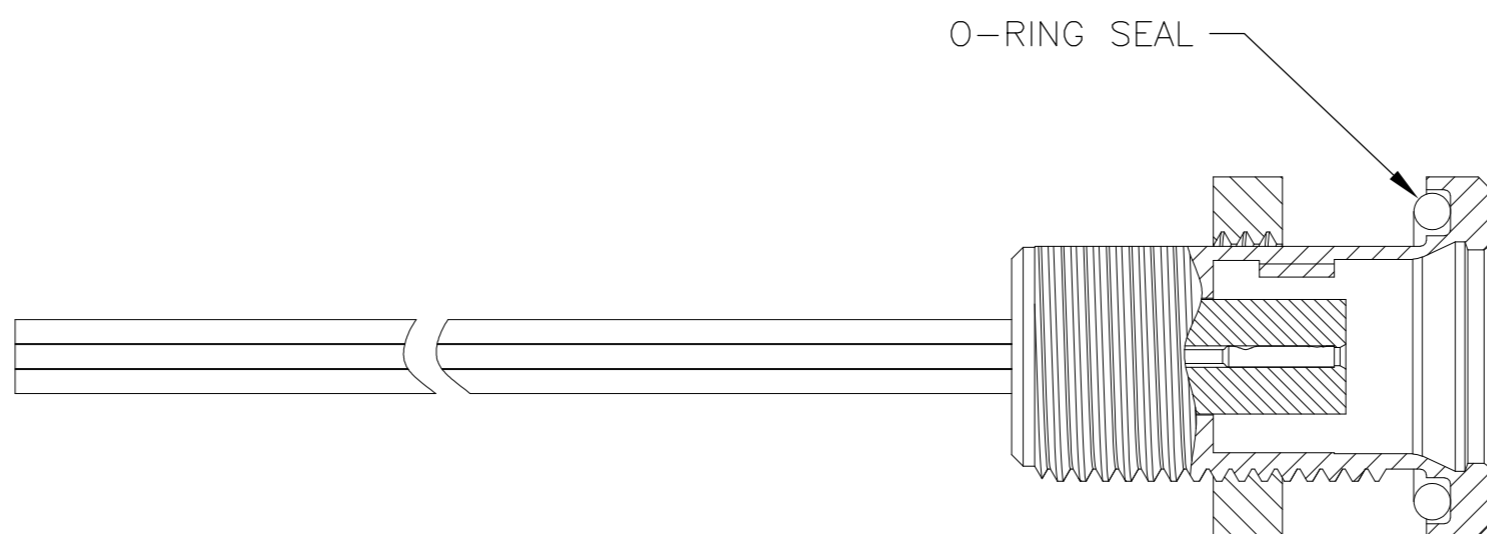
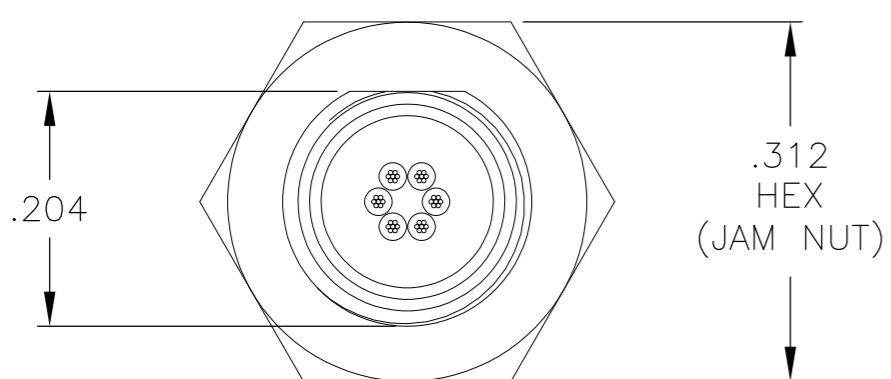
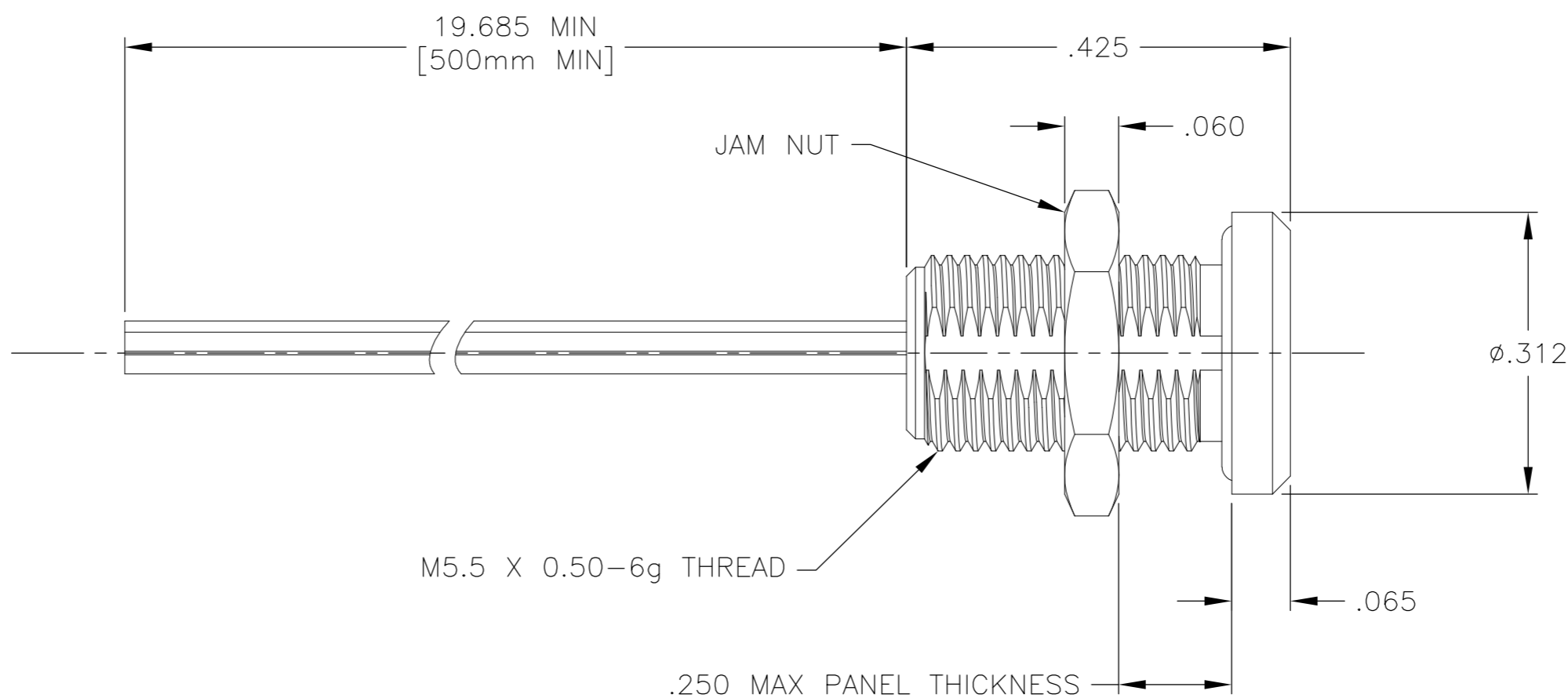


THIS DRAWING IS UNPUBLISHED. RELEASED FOR PUBLICATION
 © COPYRIGHT - By - ALL RIGHTS RESERVED.

LOC		DIST		REVISIONS			
P	LTR	DESCRIPTION	DATE	DWN	APVD		
B		UPDATE PER ECO-11-014318	11 JUN 11	CAS	MKS		



SCHEMATIC



- CONNECTOR BODY AND JAM NUT MATERIAL: 6061-T6 ALUMINUM, ELECTROLESS NICKEL PLATED PER SAE-AMS-C-26074 OR SAE-AMS-2404
 INSULATOR MATERIAL: LIQUID CRYSTAL POLYMER (LCP) PER ASTM D5138 OR POLYPHENYLENE SULFIDE (PPS) PER ASTM D4067
 O-RING MATERIAL: FLUOROSILICONE
- THIS CONFIGURATION TO BE TERMINATED WITH RAYCHEM 55/0114-30-9, SPEC 55 WIRE. POSITION 4 IS A NO CONNECT, SEE NOTE 3 FOR TERMINATION DETAILS
- THE NO CONNECT POSITION 4 IS TO HAVE A CONDUCTOR CRIMPED TO THE CONTACT, INSERTED AND TRIMMED FLUSH WITH THE CONTACT
- LUBRICATE O-RING WITH PARKER SUPER-O-LUBE PRIOR TO INSTALLATION
- EPOXY ENCAPSULATION USING FREY CF-3003 EPOXY
- NANONICS PART NUMBER: QCM00712877SCF

CLASS 2

THIS DRAWING IS A CONTROLLED DOCUMENT.		DWN	22 OCT 10		RECEPTACLE ASSEMBLY, CIRCULAR, FLUSH MOUNT, QUICK DISCONNECT, METAL, 7 POSITION, SPECIAL N12877
DIMENSIONS: INCHES		CHK	22 OCT 10		
		TOLERANCES UNLESS OTHERWISE SPECIFIED: 0 PLC ± - 1 PLC ± - 2 PLC ± .010 3 PLC ± .005 4 PLC ± - ANGLES ± 1°		NAME	
MATERIAL: SEE NOTES		FINISH: SEE NOTES		PRODUCT SPEC	
		APPLICATION SPEC		SIZE	A2
		WEIGHT		CAGE CODE	0JPN9
		CUSTOMER DRAWING		DRAWING NO	8-1925036-1
		SCALE: 6:1		RESTRICTED TO	
		SHEET 1 of 1		REV	B