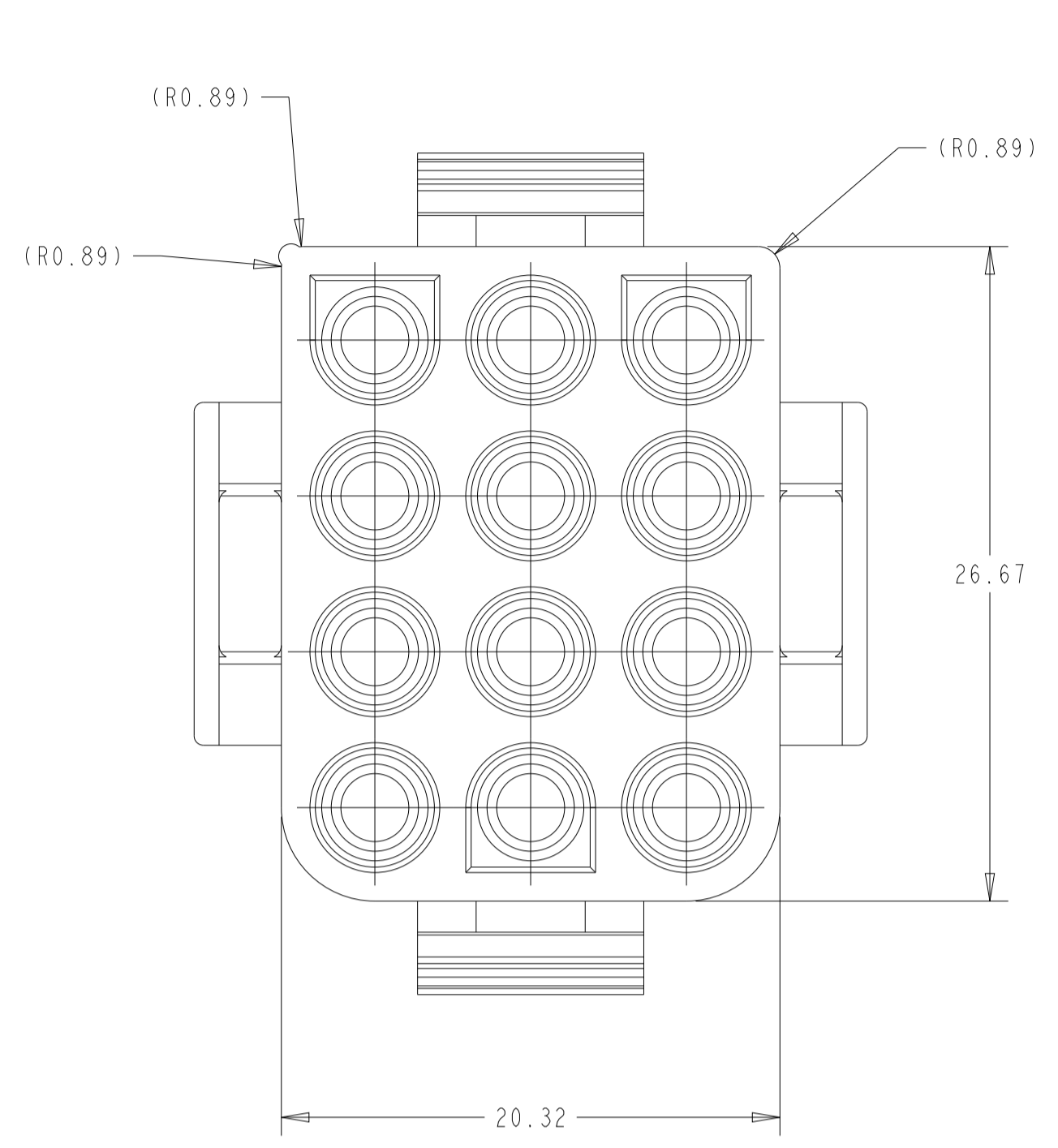
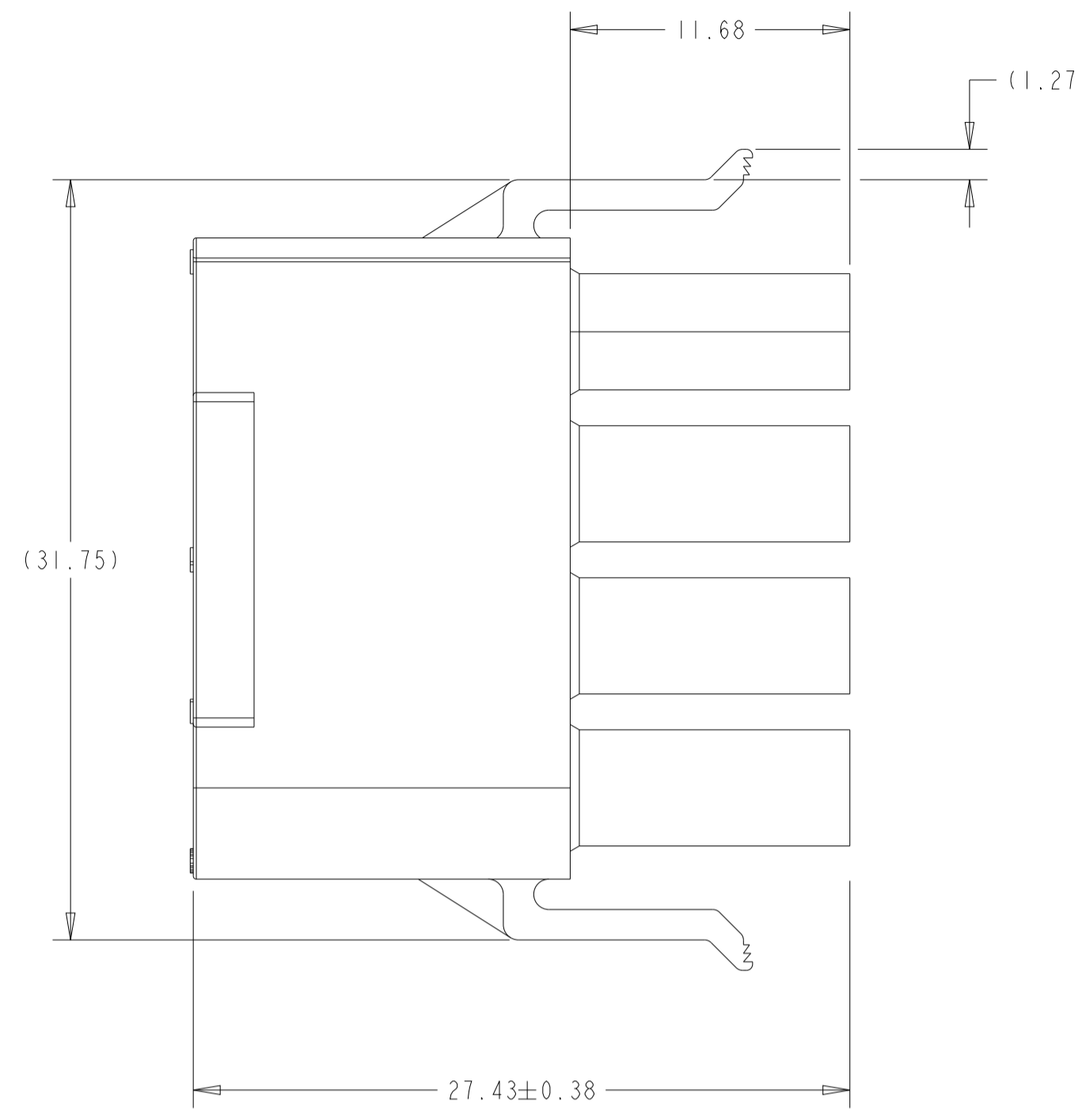
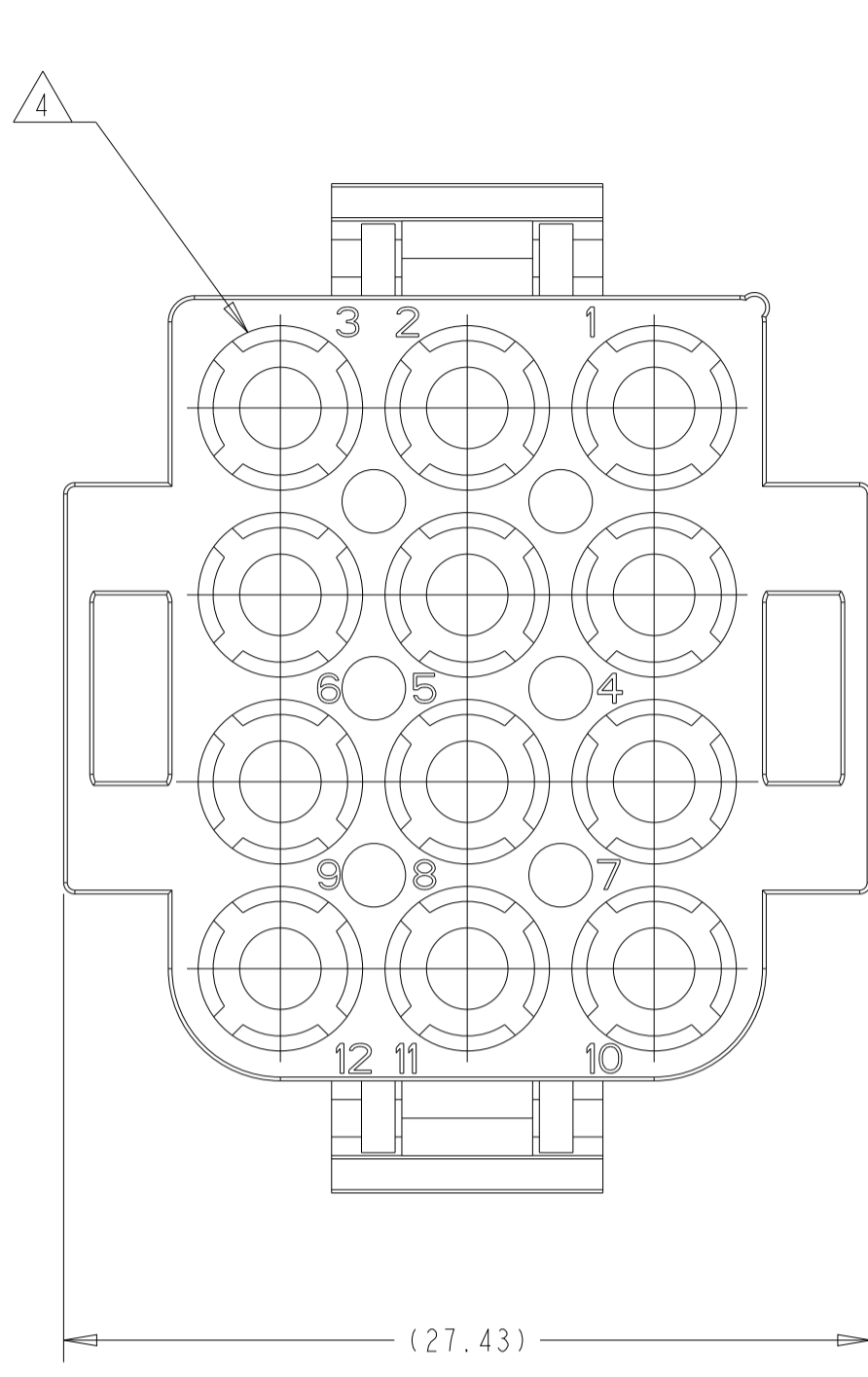
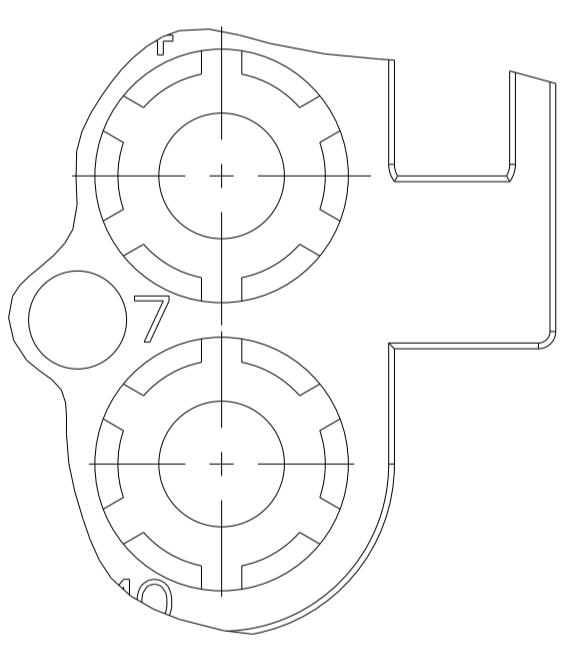


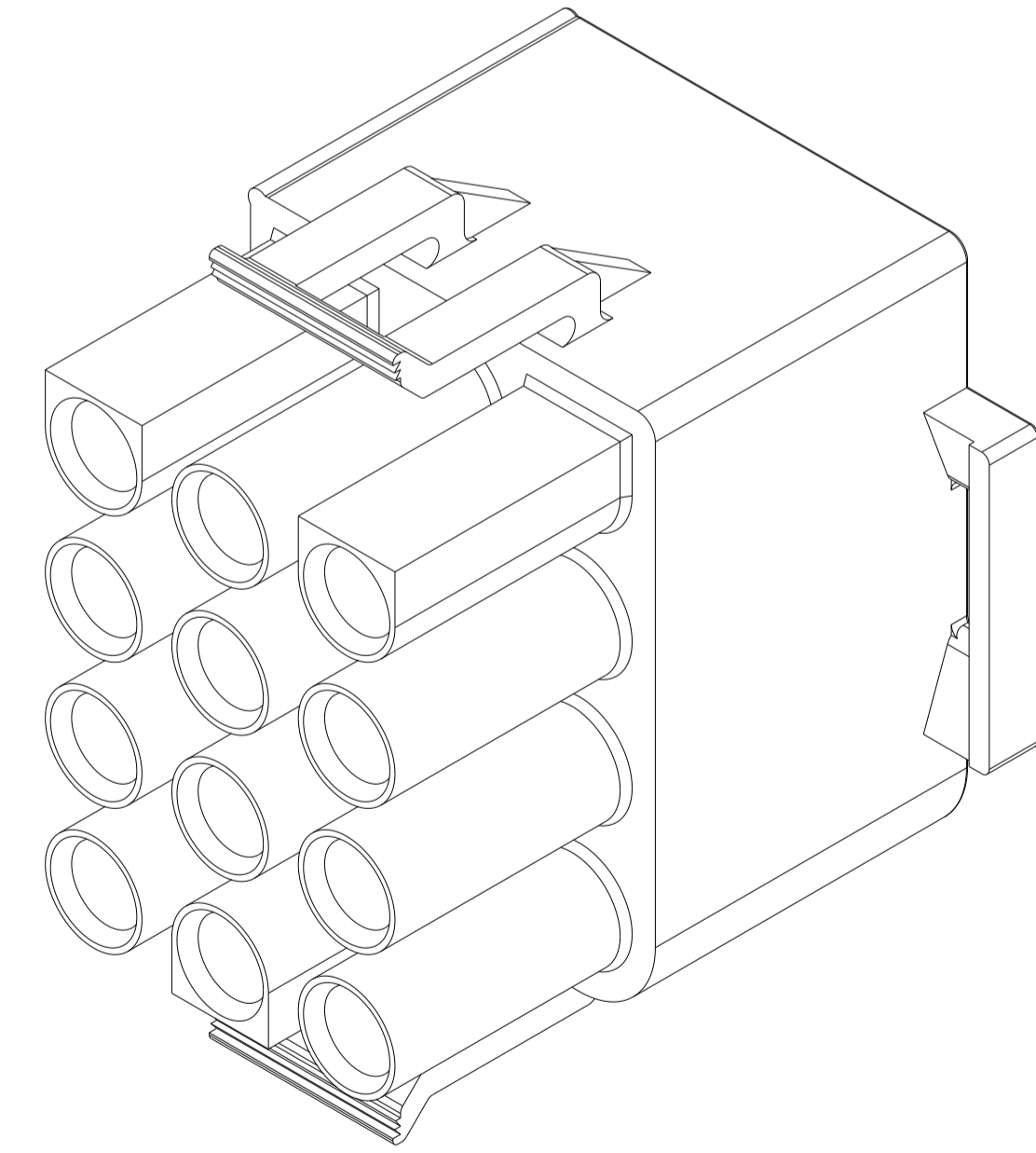
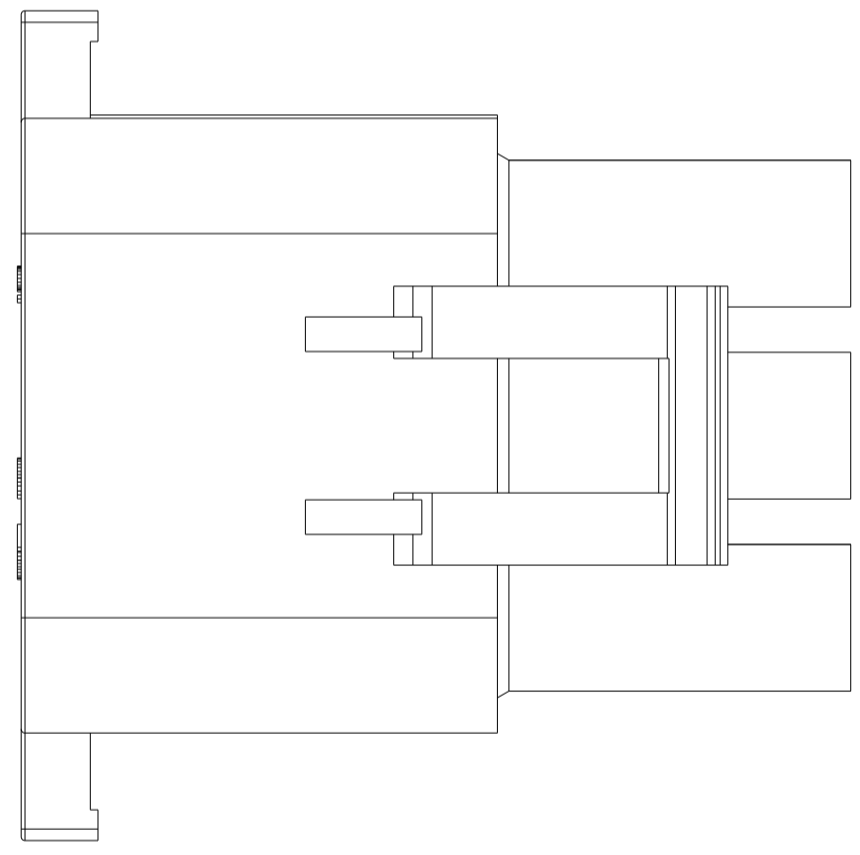
| REVISIONS | | | | |
|-----------|-----|---------------------------|-----------|-------|
| P | LTN | DESCRIPTION | DATE | APVD |
| C1 | | REV PER ECO-17-011927 | 22AUG2017 | RS KR |
| D | | REVISED PER ECR-24-218682 | 09SEP2024 | AK BR |
| | | | | |
| | | | | |



- 1 MATES WITH APPROPRIATE UNIVERSAL MATE-N-LOK™ CAP OR HEADER.
- 2 SMALL NICKS ARE PERMITTED ON THE CIRCUIT TOWERS WHICH COULD INCREASE THE INITIAL HOUSING MATING FORCE BY UP TO 4.4 NEWTONS [1.0 LBS]. NO INDIVIDUAL NICKED TOWER SHALL INCREASE THIS FORCE BY OVER 2.2 NEWTONS [0.5 LBS].
- 3 DIMENSIONS SHOWN REPRESENT PRODUCT IN DRY, AS MOLDED CONDITION ADDITIONAL 2% GROWTH DUE TO SUBSEQUENT MOISTURE ABSORPTION MAY OCCUR AND SHOULD BE ACCOUNTED FOR.
- 4 FOUR RIBS EQUALLY SPACED, NO SPECIFIC ORIENTATION, OR SIX RIBS EQUALLY SPACED, NO SPECIFIC ORIENTATION.
- 5 FLAMMABILITY V2 FOR THICKNESS 0.38mm, 1.5mm, and 3.0mm PER IEC 60695-11-10.
- 6 GLOW-WIRE FLAMMABILITY (GWFI) 800°C FOR THICKNESS 0.38mm AND 0.75mm PER IEC 60695-2-12.
- 7 GLOW-WIRE FLAMMABILITY (GWFI) 960°C FOR THICKNESS 1.5mm AND 3.0mm PER IEC 60695-2-12.
- 8 GLOW-WIRE IGNITION (GWIT) 825°C FOR THICKNESS 0.38mm, 0.75mm, 1.5mm AND 3.0mm PER IEC 60695-2-13.



SCALE 6:1
OPTIONAL CONSTRUCTION 4



| MM | IN |
|-------|-------|
| 31.75 | 1.250 |
| 27.43 | 1.080 |
| 26.67 | 1.050 |
| 20.32 | .800 |
| 11.68 | .460 |
| 1.24 | .049 |
| 0.38 | .015 |
| 0.13 | .005 |
| MM | IN |

CONVERSION TABLE

| 5 | 6 | 7 | 8 | MATERIAL | PART NUMBER |
|---|---|---|---|--------------------------|-------------|
| | | | | NYLON UL94V-2 GW NATURAL | 794742-2 |
| | | | | NYLON UL94V-0 NATURAL | 794742-1 |

THIS DRAWING IS A CONTROLLED DOCUMENT.

| | | | |
|---------------------|--|----------------------------|---|
| DIMENSIONS: | TOLERANCES UNLESS OTHERWISE SPECIFIED: | OWN: K. WHITAKER 23JAN2001 | NAME: PLUG, SHORT LATCH, 12 CKT, UNIVERSAL MATE-N-LOK |
| mm | 0 PLC ±.13 | CHK: S. RIDGILL 23JAN2001 | - |
| | 1 PLC ±.049 | APVD: S. RIDGILL 23JAN2001 | - |
| | 2 PLC ±.076 | PRODUCT SPEC | - |
| | 3 PLC ±.102 | APPLICATION SPEC | - |
| | 4 PLC ±.153 | SIZE | A |
| | ANGLES ±.005 | CAGE CODE | 00779 |
| | FINISH ±.005 | DRAWING NO | 794742 |
| MATERIAL: SEE TABLE | RESTRICTED TO | WEIGHT | - |
| | | CUSTOMER DRAWING | SCALE 4:1 SHEET 1 OF 1 REV D |