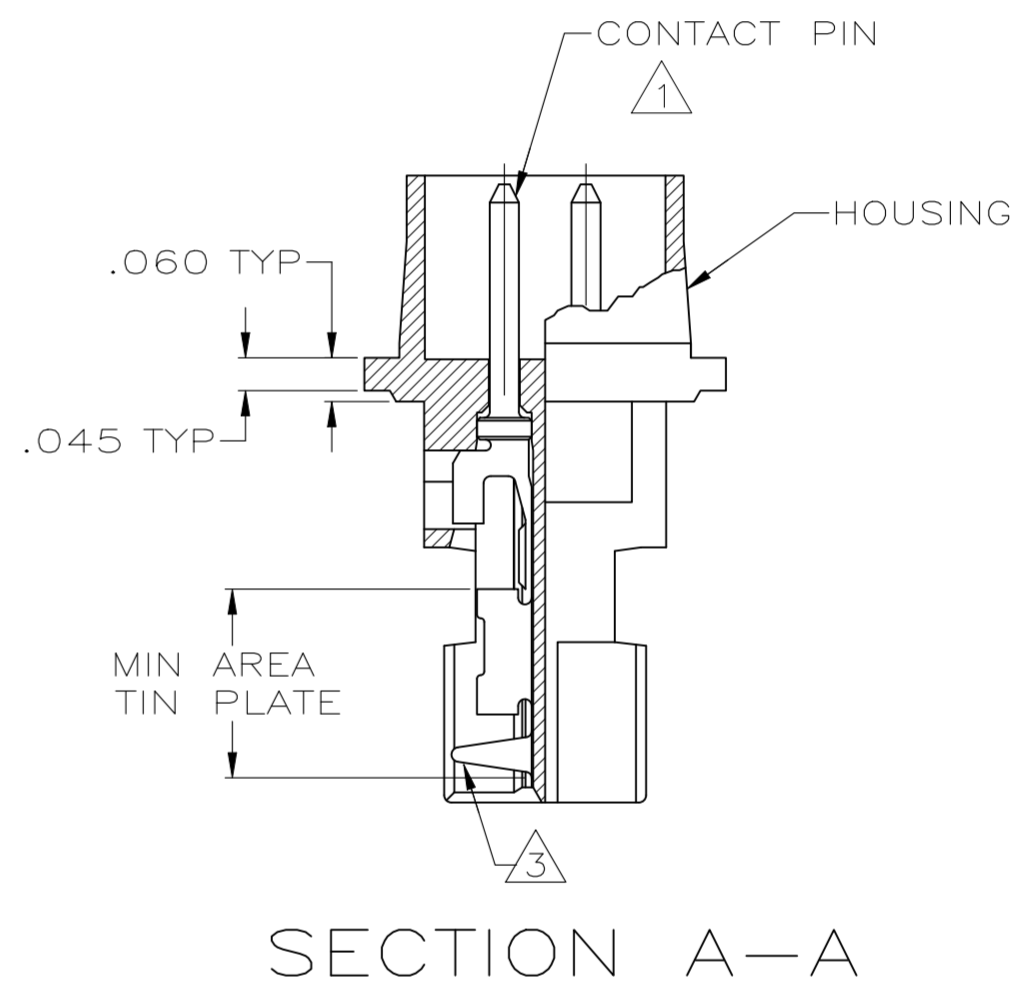
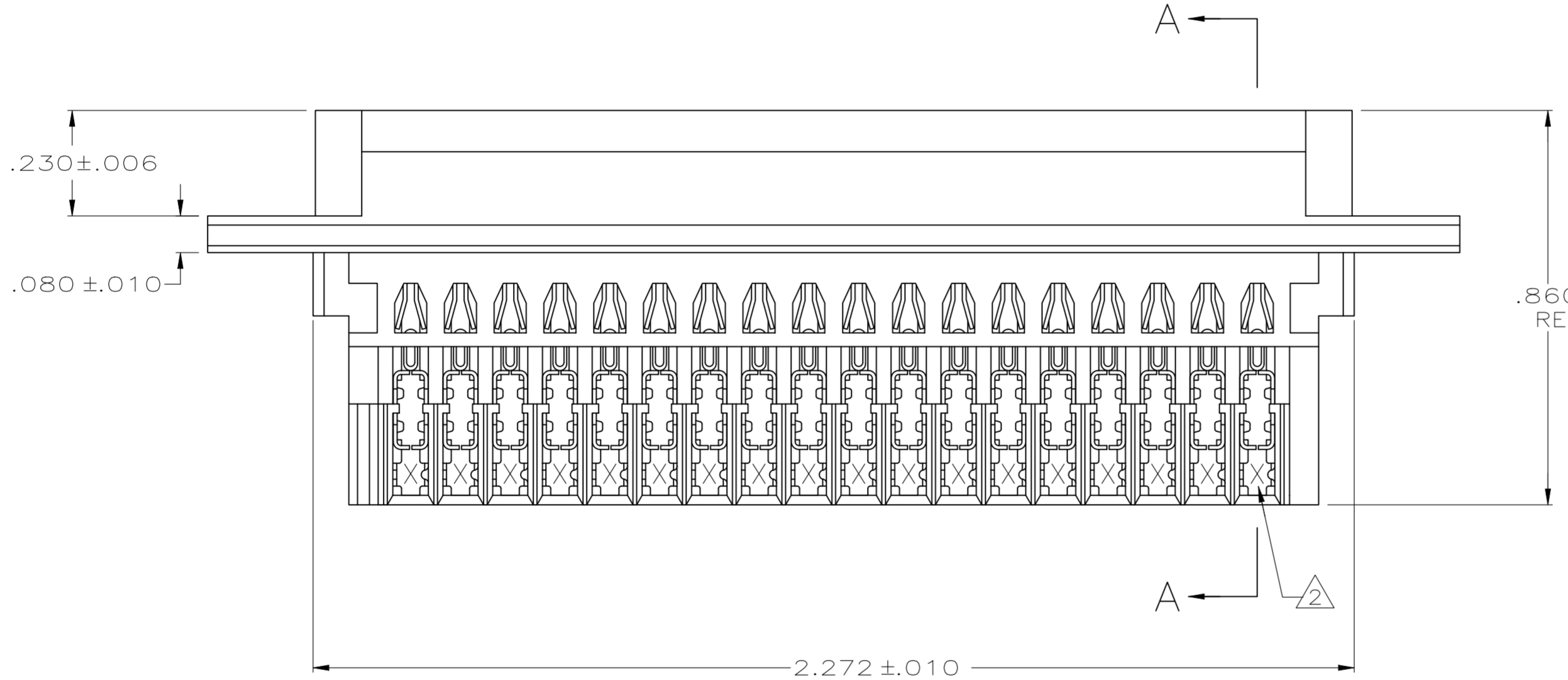
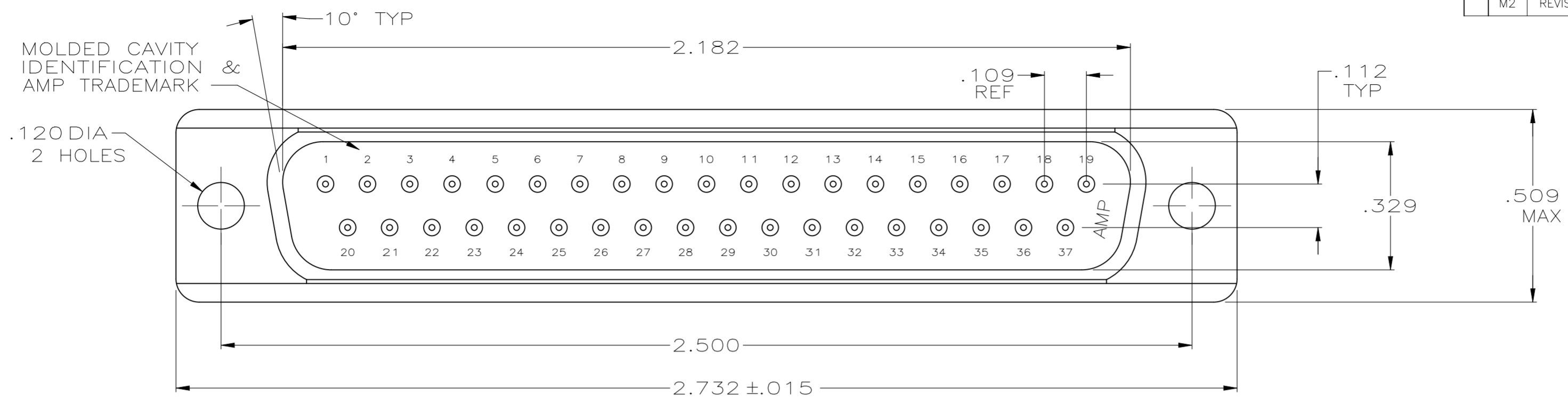


REVISIONS				
P	LTR	DESCRIPTION	DATE	APVD
M2		REVISED PER ECN-24-273928	04JUL2024	SKN PS



- ① HOUSING FULLY LOADED WITH CONTACTS.
- ② NUMBER ON CONTACT INDICATES WIRE RANGE.
- ③ CONTACT INSULATION RANGE: .060 MAXIMUM O.D.
- ④ CONTACTS PLATED GOLD PLATED FOR LENGTH OF .150 MIN FROM MATING END, .000030 MIN GOLD IN MATED AREA. .000100-.000200 BRIGHT TIN OR BRIGHT IN TIN-LEAD AREA SHOWN. .000050 NICKEL UNDERPLATE ON ENTIRE CONTACT.
- ⑤ CONTACTS PLATED GOLD PLATED FOR LENGTH OF .150 MIN FROM MATING END, GOLD FLASH IN MATED AREA. .000100-.000200 BRIGHT TIN OR BRIGHT IN TIN-LEAD AREA SHOWN. .000030 NICKEL UNDERPLATE ON ENTIRE CONTACT.
- ⑥ CONTACTS GOLD PLATED FOR A LENGTH OF .150 MIN FROM MATING END, .000030 MIN GOLD IN MATED AREA, .000100-.000200 MATTE TIN IN AREA SHOWN, ALL OVER .000050 MIN NICKEL UNDERPLATE ON ENTIRE CONTACT.
OR
CONTACTS GOLD PLATED FOR A LENGTH OF .150 MIN FROM MATING END, GOLD FLASH OVER PALLADIUM-NICKEL, .000030 MIN TOTAL IN MATED AREA, .000100-.000200 MATTE TIN IN AREA SHOWN, ALL OVER .000050 MIN NICKEL UNDERPLATE ON ENTIRE CONTACT.
- ⑦ HOUSING: BLACK THERMOPLASTIC 94V-0 RATED.
CONTACTS: PHOSPHOR BRONZE.

OBSOLETE	⑥	2	#22-26	745215-7
OBSOLETE		3	#20-22	745215-6
SUPD BY 745215-2	⑤	2	#22-26	745215-5
OBSOLETE		1	#26-30	745215-4
OBSOLETE	④	3	#20-22	745215-3
OBSOLETE		2	#22-26	745215-2
OBSOLETE		1	#26-30	745215-1
FINISH	②		AWG WIRE RANGE	PART NUMBER

THIS DRAWING IS A CONTROLLED DOCUMENT.		DWN 11-15-04 L. VARELA -- DOCK5	TE Connectivity	
DIMENSIONS: INCHES		CHK 11-15-04 J. GERACE	NAME	
TOLERANCES UNLESS OTHERWISE SPECIFIED:		APVD 11-15-04 M. WALMSLEY	PRODUCT SPEC	
0 PLC ± -		108-40011		
1 PLC ± -		APPLICATION SPEC		
2 PLC ± -		114-40002		
3 PLC ± .005		SIZE A2	CAGE CODE 00779	DRAWING NO 745215
4 PLC ± - ± 2'		RESTRICTED TO		
MATERIAL FINISH SEE TABLE		CUSTOMER DRAWING		
		SCALE 4:1	SHEET 1 of 1	REV M2