

THIS DRAWING IS UNPUBLISHED.

RELEASED FOR PUBLICATION

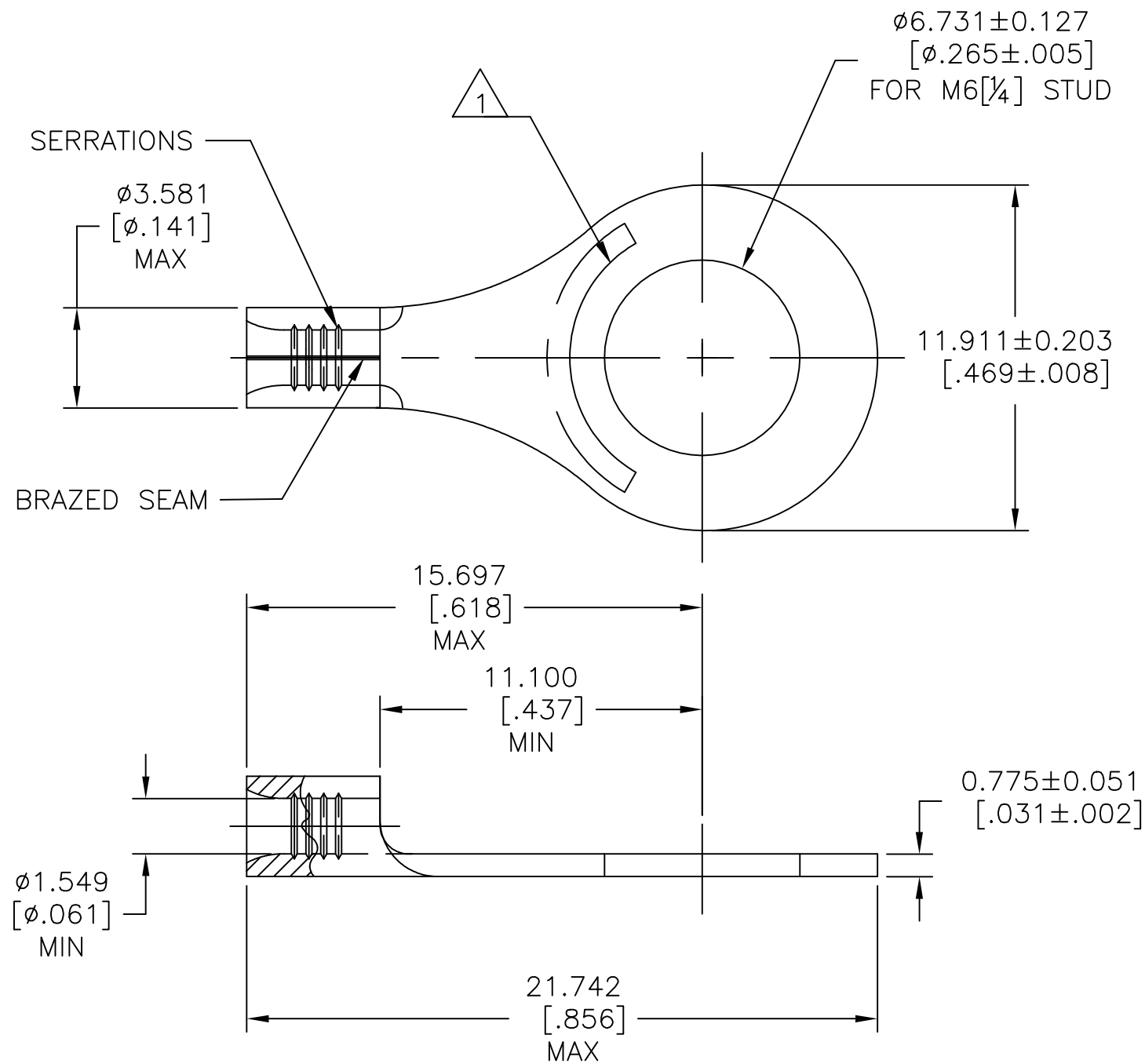
---

© COPYRIGHT - TE Connectivity Ltd.

ALL RIGHTS RESERVED.

REVISIONS

P	LTR	DESCRIPTION	DATE	DWN	APVD
	A	DRAWN	01MAR10	JR	MS
	B	REVISED PER ECO-17-008808	12MAR2018	RS	DR
	C	REVISED PER ECO-18-013297	22AUG2018	RS	DR



- 1 STAMP AMP 22-18\* APPROX AS SHOWN, 22-16 TERMINALS ARE STAMPED 22-18 IN ACCORDANCE WITH MILITARY SPEC SAE-AS7928, COMMERCIAL WIRE RANGE 22-16.
- 2 WIRE RANGE IS FOR #22-#16 AWG STANDARD. WIRE CROSS SECTION OF AREA RANGE: 509-3260 CMA, SOLID OR STRANDED WIRE
- 3 NICKEL PLATE PER SAE AMS QQ-N-290, .000300 MIN THK.
- 4 MAX TEMPERATURE RATING 343°C

1000	LOOSE PIECE	696949-1
QTY	PACKAGING TYPE	PART NO

THIS DRAWING IS A CONTROLLED DOCUMENT.		DWN JR RUTH 01MAR10	<b>TE</b> TE Connectivity Ltd.	
DIMENSIONS: mm [INCHES]		CHK TOM MICHIELUTTI 01MAR10		
TOLERANCES UNLESS OTHERWISE SPECIFIED:		APVD TOM MICHIELUTTI 01MAR10	NAME TERMINAL, RING TONGUE, STRATO-THERM, HEAT RESISTANT, 22-16 AWG	
0 PLC ± - 1 PLC ± - 2 PLC ± - 3 PLC ± 0.127[.005] 4 PLC ± - ANGLES ± 1°		PRODUCT SPEC 108-32046	RESTRICTED TO	
MATERIAL COPPER ASTM B-152 ANNEALED		FINISH 3	APPLICATION SPEC 114-2162	SIZE A3
		WEIGHT -	CAGE CODE 00779	DRAWING NO 696949
CUSTOMER DRAWING			SCALE 5:1	SHEET 1 of 1
			REV C	