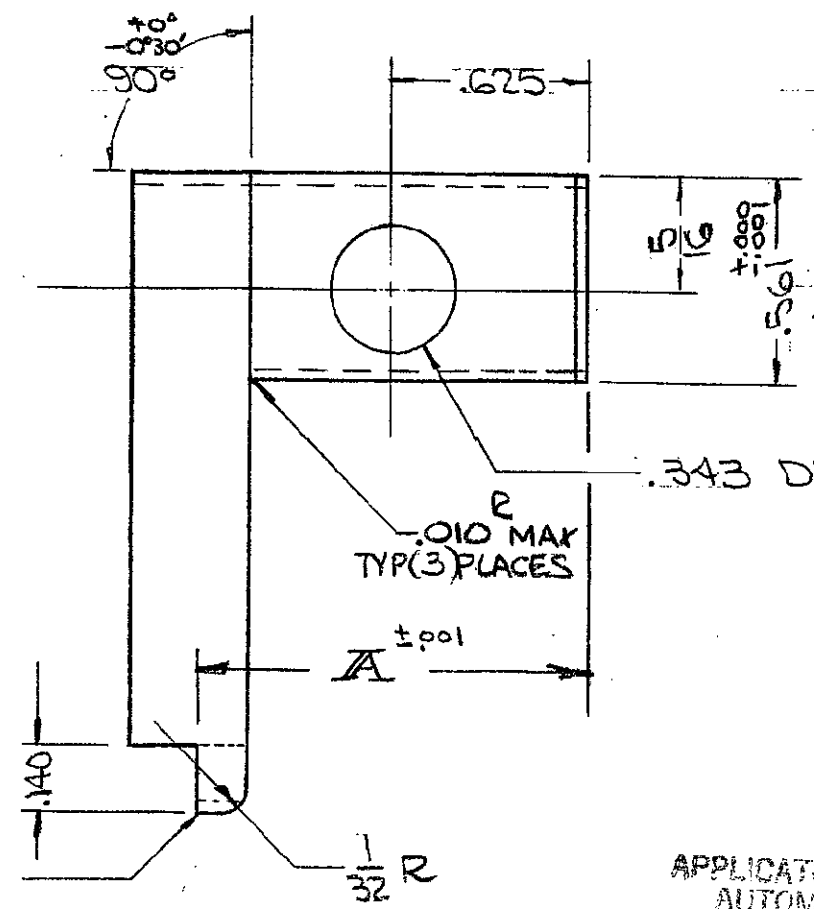
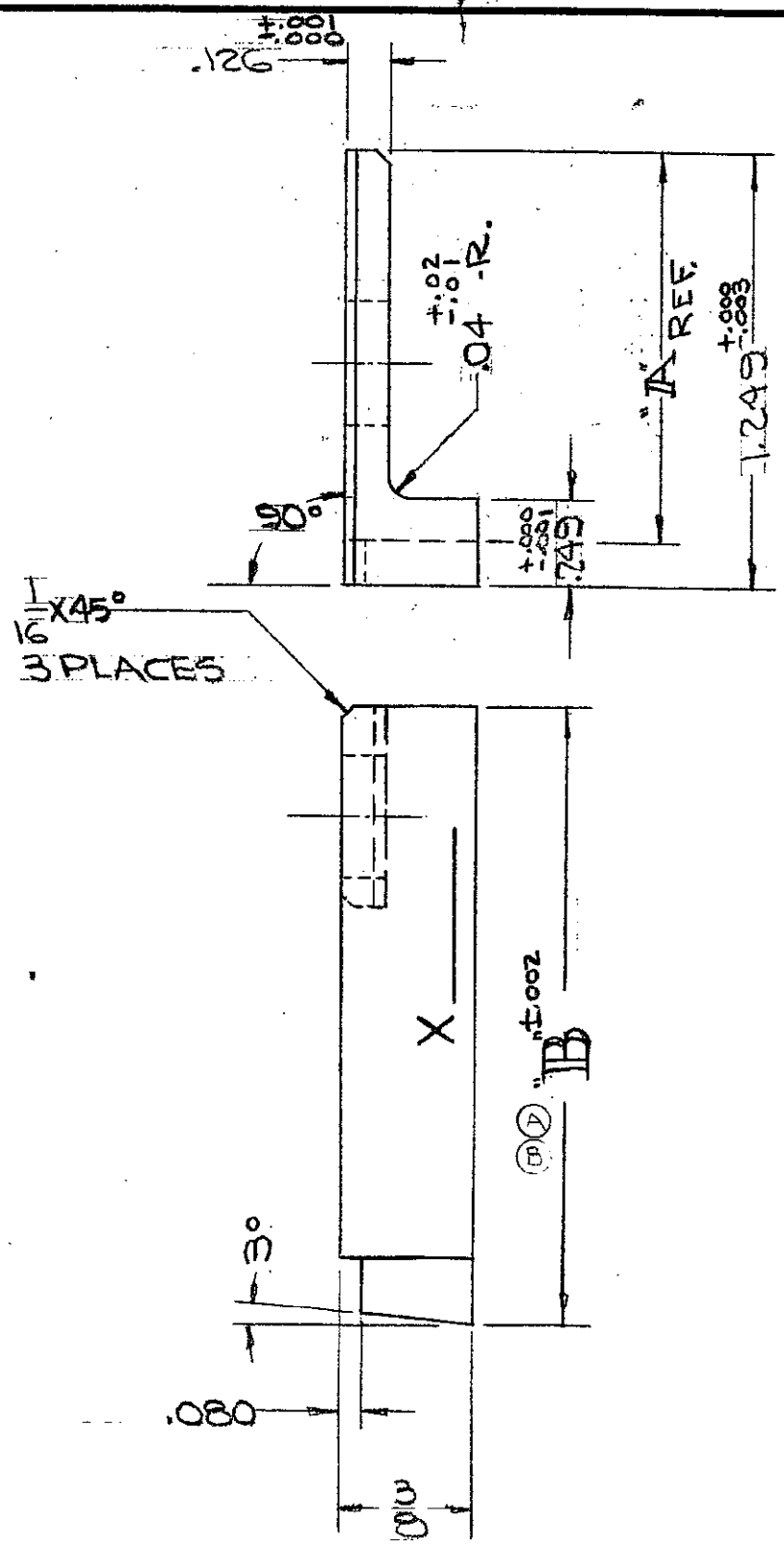


USED ON

THIS INFORMATION IS CONFIDENTIAL AND IS DISCLOSED TO YOU ON CONDITION THAT NO FURTHER DISCLOSURE IS MADE BY YOU TO OTHER THAN AMP PERSONNEL WITHOUT WRITTEN AUTHORIZATION FROM AMP INCORPORATED, HARRISBURG, PA.

DIMENSIONS IN INCHES. DO NOT SCALE PRINT.



1. APPLY PART NUMBER PER PROCESS SPEC. 106-2 PARA. 3.3-A-E IN AREA X

2. APPLY PROTECTIVE COATING PER SPEC. 107-1025.

AMP O-MATOR APPLICATOR

APPLICATOR & MACHINE PROG. ENG. AUTOMATIC MACHINE DIVISION

CUTTING EDGE LEAVE SHARP

OBS	PART NO.	REV	"A"	"B"	FIRST USED	RELEASE		CHK DR
						TR	DATE	
	690549-1	F	1.105	1.675	60755	O-1	2-24-65	IM
	-2	F	1.147	1.725	60295	O-2	2-24-65	IM
	-3	F	1.082	1.750	60755	O-3	2-24-65	JH
	-4	F	1.000	1.750	60755	B	11-12-65	IM
	-5	F	1.090	1.725	60455	D	7/28/66	IM
	-6	F	1.082	1.725	60736			IM
	-7	F	1.090	1.710	60314			IM
	-8	F	1.147	1.770	60960			IM
	-9	F	1.105	1.705	60755	E3	9/5/68	IM
	1-690549-0	F	1.162	1.725	60471			

NUMBER 690549

UNLESS SPECIFIED, REMOVE BURRS. BREAK SHARP EDGES 1/64 R. MAX. OTHERWISE FRACTIONS: ± 1/64 DECIMALS: .000 = ± .005 .0000 = ± .0005		637	
MATERIAL 100-99		DR BUYER 2/24/65	APP DR J. J. J. 1/15/67
HEAT TREAT RC 60-62		CHK 3-18-65	REL J. J. J. 5/17/67
COATING OR PLATING BLACKEN AS PER 112-157		AMP INCORPORATED HARRISBURG, PENNA.	
TERMINAL	FIRST USED MINI APPL.	LOC A	NO B
TYPE FLAG	NAME SHEAR-SIDE	AMP O-MATOR APPLICATOR	
SCALE 2:1	DATE	REV F2	

PRINT DIST X10