

THIS DRAWING IS UNPUBLISHED.		RELEASED FOR PUBLICATION		2007	
COPYRIGHT 2007 BY TYCO ELECTRONICS CORPORATION. ALL RIGHTS RESERVED.					
PART NUMBER	REV	FIRST USED	POWER UNIT	FEED TYPE	
680588-3	F	354500-1	BENCH MODEL G	AIR FEED	

- 1 RECOMMENDED SPARE PARTS.
- 2 GREASE LIGHTLY.
- 3 LUBRICATE DAILY USING NO.20 MACHINE OIL.
- 4. DO NOT EXCEED 80 C.P.M. WITH THIS APPLICATOR.
- 5 AFTER ASSEMBLY OF APPLICATOR, PROPER SPRING PRESSURE (ITEM 34) CAN BE OBTAINED BY TIGHTENING SET SCREW (ITEM 105) UNTIL CONTACT IS MADE WITH SPACER (ITEM 32) THEN TIGHTEN AN ADDITIONAL 5 1/2 - 6 REVOLUTIONS.
- 6 SELECT TERMINAL POSITIONER AS REQUIRED TO KEEP TERMINAL ON CENTER OF ANVIL. FASTEN EXTRA TERMINAL POSITIONER TO APPLICATOR. (REFER TO AMP FORM 6140-4)
- 7 GUARD MUST BE IN PLACE WHEN OPERATING APPLICATOR IN A BENCH MACHINE.
- 8 APPLY LOCKTITE P/N 1-23419-5 TO ITEM 93 AT ASSEMBLY.

TERMINAL NAME: RECEPTACLE, FLAG, FASTON, .250 SERIES						
-	42234	AMP TERMINAL - AMP CRIMP SPECS				
-	42459					
-	60195	PAD LTR	CRIMP HEIGHT	WIRE SIZE	Ø	SOLDER
-	60643	A	.065±.002	14	-	-
-	62354	B	.061±.002	16	-	-
-	63635	C	.058±.002	18	-	-
-	1742595-1	D	.056±.002	20	-	-
-	-	CRIMP	SIZE	TYPE	RANGE	
-	-	WIRE	.140	TAB LOC	20-14	
-	-	INSUL	.170	O	.110-.170	
WIRE STRIP LENGTH .205-.235						
TERM APPL SPEC 114-2078		FEED .650	APPL INSTRUCTIONS 408-8031	SET UP GAGE	LAYOUT	

LOC	DIST	REVISIONS					
A	66	P	LTN	DESCRIPTION	DATE	OWN	APVD
		E		ECR-07-006533	27MAR2007	BW	TE
		E1		ECR-07-017988	01AUG2007	MY	TM
		E2		ECR-14-002580	24FEB2014	YY	UG
		F		ECR-17-015089	12OCT2017	RS	LZ

4	-	2-22603-3	SCR, HEX HD CAP, 1IN	88
1	-	2-21002-1	SCR, BTN SKT HD CAP 8-32 X .375	87
2	-	21001-3	SCR, SKT HD CAP 1/4-20 X .625	86
REF	...	679532-1	INSERT, GUARD	80
1	-	462622-2	AIR FEED ASSEMBLY	78
2	-	21017-2	SCREW, DRIVE	76
1	-	461264-1	PLATE, IDENTIFICATION	75
1	-	23030-1	SCR, SKT HD CAP, S-LOCK, 6-32 X .25	74
1	-	690603-1	SPRING ASSIST AMP-O-MATOR APPLICATOR	72
1	-	456987-1	BLOCK, PIVOT	65
1	-	457058-1	PIN, PIVOT	64
1	-	455164-1	CAP, RAM	59
1	-	457079-1	HOUSING, MACHINING	58
1	-	240624-1	PIN, FEED FINGER	55
1	-	691499-1	SPRING-FEED FINGER	54
1	-	454568-2	FINGER, FEED	53
1	-	457057-1	PIVOT ARM	52
1	-	3-21002-5	SCR, BTN SKT HD CAP 1/4-20 X .750	49
1	-	22353-8	SCR, SHLD, SLOT HD, 3/16 DIA	47
1	-	690578-1	INSULATION ADJUST BLOCK	46
1	-	690191-1	PLUG, NYLON	45
1	-	454574-1	RAM, SPECIAL	44
1	-	690125-1	SHIM SUB-ASSY	43
1	-	690124-4	WASHER, RAM (.135)	42
1	-	23241-6	BALL, STEEL	40
1	-	690170-1	SPRING, COMPRESSION	39
1	-	690142-1	DISC, INSULATION	38
1	-	354777-1	WIRE DISC, ASSEMBLY	37
1	-	22480-5	WASHER, WAVE SPRING	36
1	-	690212-1	POST, RAM	35
1	-	3-23846-5	SPRING, DIE	34
1	-	690573-1	SPACER, SPRING	32
1	-	454569-1	MOUNT, DRAG	31
1	-	1-22354-8	STUD, THREADED	30
1	-	21030-2	PIN, DOWEL .1250 X .500	29
1	-	690582-1	PIN, HINGE	28
1	-	684905-1	PLATE, BASE	26
1	-	454579-2	BAR, HINGE	25
1	-	690571-1	STABILIZER	24
1	-	690585-1	BLOCK, SPRING PRESSURE	23
1	-	22282-5	SPRING, COMPRESSION	22
1	-	21030-6	PIN, DOWEL .1250 X 1.000	21
1	-	454570-1	DRAG, STOCK	20
1	-	454573-1	GUIDE, STRIP, REAR	19
1	-	454571-2	GUIDE, FRONT STRIP	18
1	-	2-22287-6	SPRING, EXTENSION	17
1	-	692134-7	POSITIONER, TERMINAL	14
1	-	692134-2	TERMINAL POSITIONER	13
1	-	5-22280-5	SPRING, COMPRESSION	12
1	-	454712-4	PLATE, REAR SHEAR	11
1	-	454578-1	ANVIL INSERT	10
1	-	690569-3	PLATE, SHEAR, FRONT	9
1	-	690718-1	ANVIL, REVERSIBLE	8
1	-	454575-3	BLADE, SHEAR	7
1	-	684906-1	ANVIL RETAINING	5
1	-	690574-1	SPACER, TUBULAR	4
1	-	690588-1	CRIMPER, INSULATION PREMIUM	3
1	-	690716-3	CRIMPER, WIRE PREMIUM	1
-3	U/M	PART NO	DESCRIPTION	ITEM NO

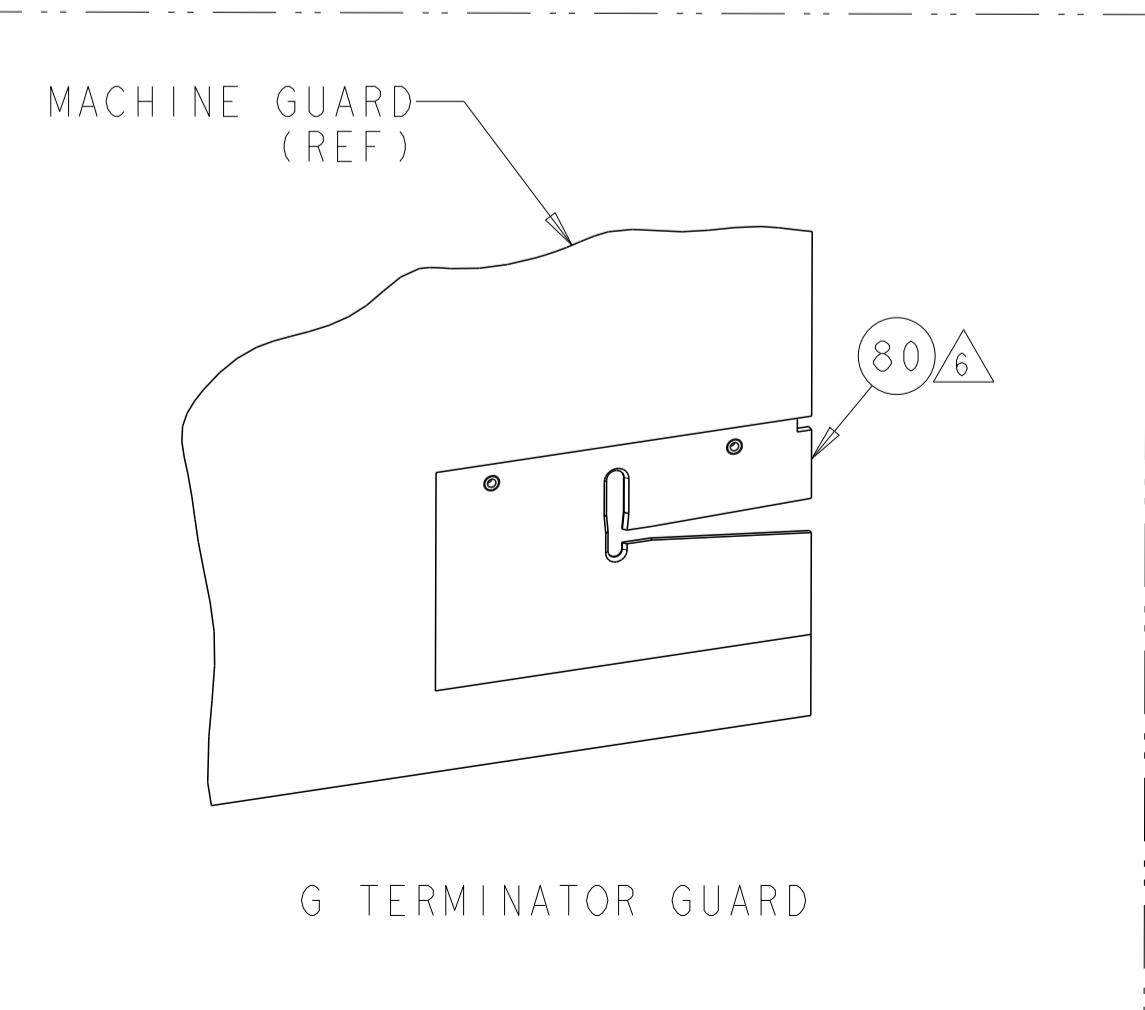
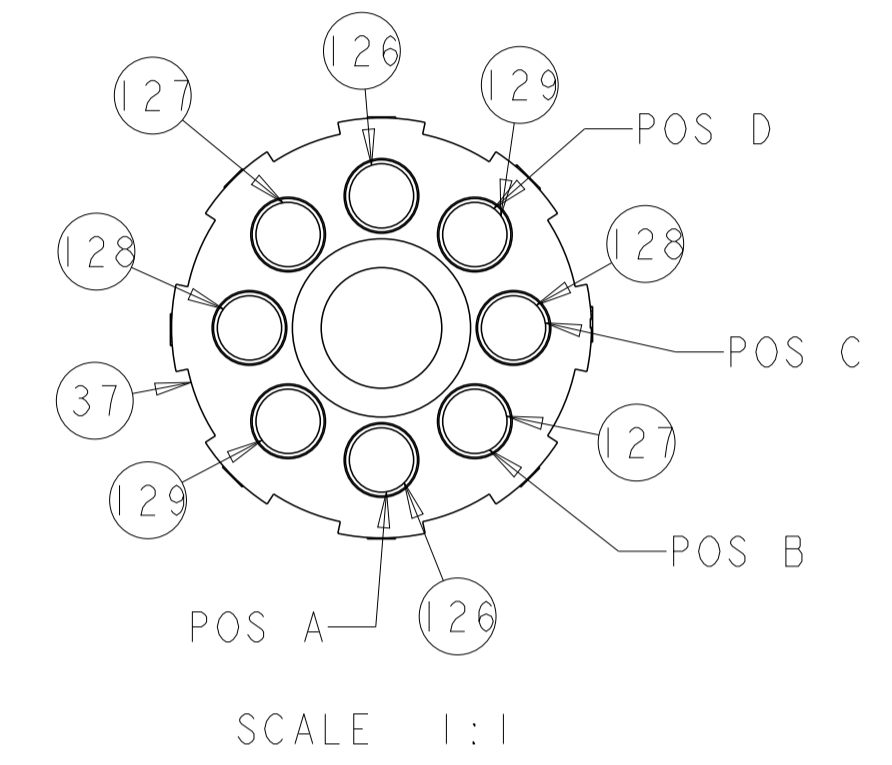
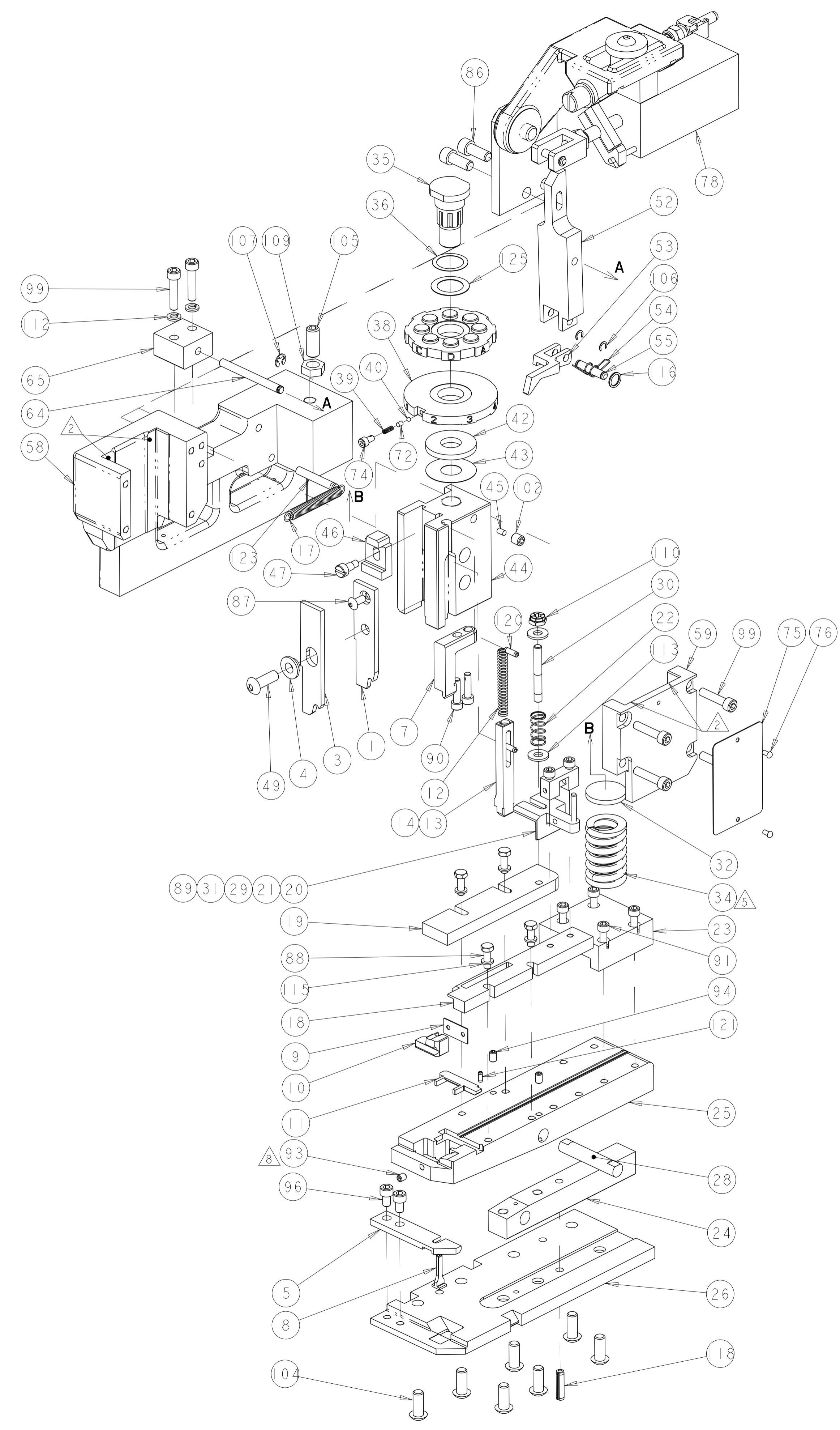
2	-	2-354779-9	PIN, WIRE DISC (.3135)	129
2	-	2-354779-8	PIN, WIRE DISC (.3130)	128
2	-	2-354779-4	PIN, WIRE DISC (.3110)	127
2	-	1-354779-8	PIN, WIRE DISC (.3080)	126
1	-	986950-1	WASHER, FLAT PRECISION	125
1	-	4-22183-0	PIN, GROOVED, TYPE 67	123
1	-	3-21028-2	PIN, SLOTTED SPRING .094 X .250	121
2	-	4-21028-9	PIN, SLOTTED SPRING .125 X .375	120
1	-	21029-5	PIN, SLOTTED SPRING .188 X .750	118
1	-	25745-1	RING, SPLIT	116
4	-	21024-4	WASHER, SPRG LOCK, REG NO 8	115
2	-	21899-2	WASHER, FLAT	113
2	-	21024-5	WASHER, SPRG LOCK, REG NO 10	112
1	-	21022-3	NUT, HEX, SELF-LOCKING, THIN, 10-32	110
1	-	1-22202-7	NUT, HEX, JAM 5/16-24/UNF	109
1	-	1-21986-2	RING, RETAIN, EXTERN, 3/16 E-RING	107
2	-	21045-3	RING, RETAIN, EXTERN, 3/16 CRESCENT	106
1	-	8-21007-5	SCR, SET, CUP POINT 5/16-24 X .750	105
7	-	2-22733-8	SCR, BHSC, SELF-LOCKING, 1/4-20 X .625	104
1	-	21009-2	SCR, SET, SELF LOCKING 1/4-20 X .250	102
6	-	3-21000-8	SCR, SKT HD CAP 10-32 X .875	99
2	-	7-21000-6	SCR, SKT HD CAP 10-32 X .312	96
2	-	4-21008-0	SCR, SET, SELF LOCKING 1/4-20 X .250	94
1	-	21061-9	SCR, SET, CONE POINT 8-32 X .250	93
4	-	2-21000-9	SCR, SKT HD CAP 8-32 X .750	91
2	-	1-23030-1	SCR, SKT HD CAP, S-LOCK, 8-32 X .625	90
2	-	2-21000-8	SCR, SKT HD CAP 8-32 X .625	89

THIS DRAWING IS UNPUBLISHED. IT IS THE PROPERTY OF TYCO ELECTRONICS CORPORATION. IT IS TO BE USED FOR THE MANUFACTURE OF THE PRODUCT SPECIFIED HEREON. IT IS TO BE RETURNED TO TYCO ELECTRONICS CORPORATION UPON THE COMPLETION OF THE PROJECT. IT IS TO BE DESTROYED UPON THE COMPLETION OF THE PROJECT. IT IS TO BE KEPT IN A SAFE PLACE AND NOT TO BE REPRODUCED OR COPIED IN ANY MANNER WITHOUT THE WRITTEN PERMISSION OF TYCO ELECTRONICS CORPORATION.

DIMENSIONS:	TOLERANCES UNLESS OTHERWISE SPECIFIED:	OWN	DATE	 TE Connectivity Harrisburg, PA 17105-3608
IN	0 PLC ±.010	D. WEAVER	07FEB2007	
	1 PLC ±.005	CHE	07FEB2007	
	2 PLC ±.003	T. ELBIN	07FEB2007	
	3 PLC ±.002	APVD	T. ELBIN	07FEB2007
	4 PLC ±.001	PRODUCT SPEC		
	ANGLES ±.005	APPLICATION SPEC		
MATERIAL	FINISH	WEIGHT	SCALE	RESTRICTED TO
			A 00779 C=680588	
Customer Accessible Production Drawing				SCALE 1:1 SHEET 1 OF 2 REV F

CUSTOMER VIEWABLE ASSEMBLY

LOC		DIST		REVISIONS			
A	66	P	LTH	DESCRIPTION	DATE	DWN	APVD
-	-	-	-	SEE SHEET 1	-	-	-



<small>THIS DRAWING IS UNPUBLISHED. RELEASED FOR PUBLICATION 2007. ALL RIGHTS RESERVED. © 2007 BY TYCO ELECTRONICS CORPORATION.</small>		DWN B. WEAVER 07FEB2007 CHK T. ELBIN 07FEB2007 APVD T. ELBIN 07FEB2007	STE TE Connectivity Harrisburg, PA 17105-3608
DIMENSIONS: IN TOLERANCES UNLESS OTHERWISE SPECIFIED: 0 PLC ±. 1 PLC ±. 2 PLC ±. 3 PLC ±. 4 PLC ±. ANGLES ±. FINISH		NAME APPLICATOR, HINGE BAR, .205 FLAG FASTON PRODUCT SPEC APPLICATION SPEC WEIGHT Customer Accessible Production Drawing	SIZE CAGE CODE DRAWING NO. RESTRICTED TO A 100779 C=680588 SCALE 3:5 SHEET 2 OF 2 REV F

CUSTOMER VIEWABLE ASSEMBLY