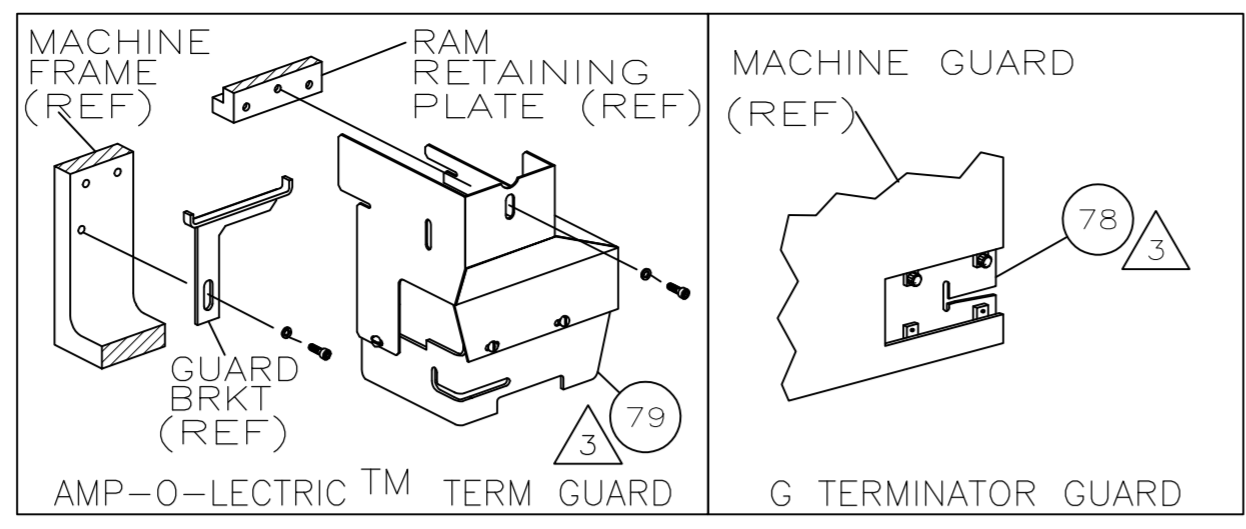


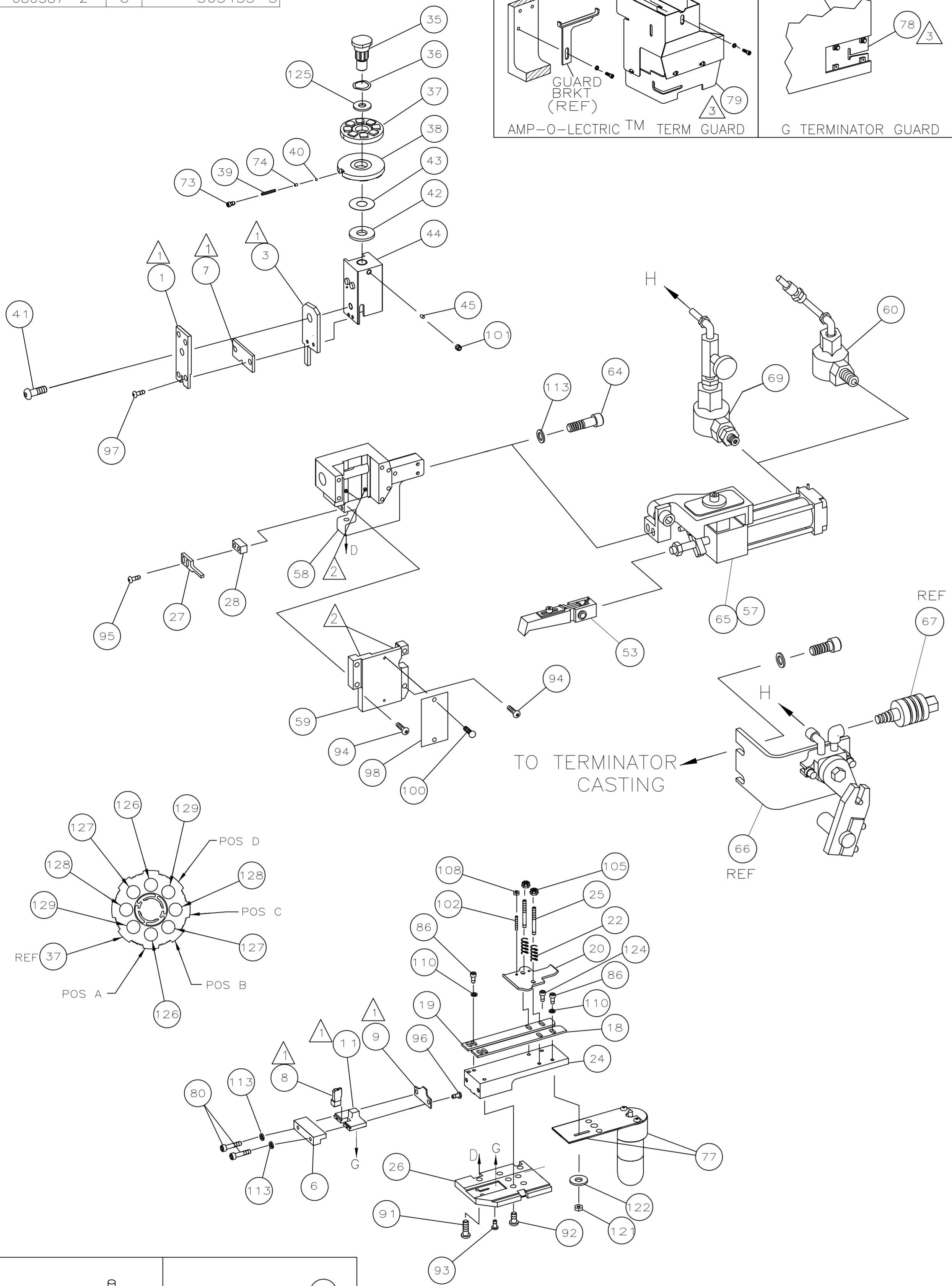
THIS DRAWING IS A CONTROLLED DOCUMENT.

PART NUMBER	REV	FIRST USED
680587 -1	C	354500-1
680587 -2	C	565435-5



TERMINAL NAME: .187 AMPLIVAR™FASTIN FASTON™TAB					
TAB FED FIRST		CRIMPING DATA			
	62447-1	PAD LTR	CRIMP HEIGHT	WIRE SIZE	
		A	.059 ±.002 [1.50 ±0.05mm]	(1)21 & (1)22	
		B	.054 ±.002 [1.37 ±0.05mm]	21 OR 22	
		C	NOT	USED	
		D	NOT	USED	
		CRIMP	SIZE	TYPE RANGE	
		WIRE	.110 [2.79mm]	F 22-21 MAG	
		INSUL	-	-	
WIRE STRIP LENGTH	TERM APPL SPEC	FEED	APPL INSTRUCTION	SET UP GAGE	LAYOUT
-	114-2070	1.065	408-8039	-	L2041

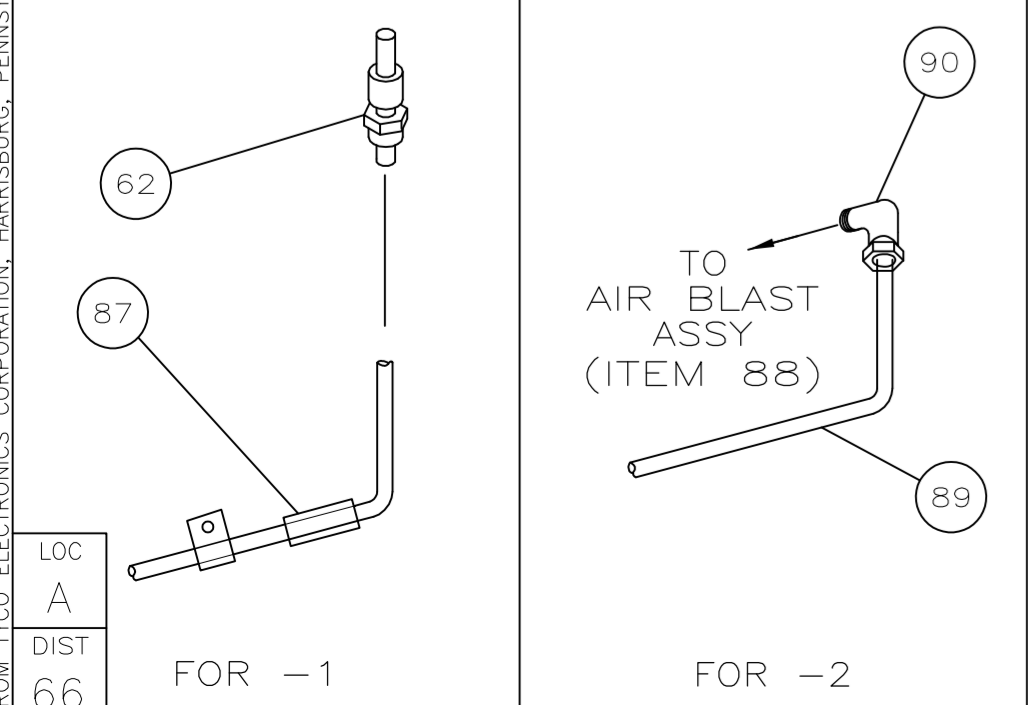
USED ON		
-1	BENCH MODEL G	AIRFEED
-2	BENCH MODEL K	AIRFEED



					129
					128
2	2	-	2-354779-6	PIN, WIRE DISC (.3120)B	127
2	2	-	1-354779-8	PIN, WIRE DISC (.3080)A	126
1	1	-	986950-1	WASHER, FLAT PRECISION	125
1	1	-	2-21000-9	SCR,SHC(8-32x.75)ST GU	124
					123
1	1	-	21055-6	WASHER,FLAT (NO.8)LUBE	122
1	1	-	21018-6	NUT,HEX (NO.8)LUBE	121
					120
					119
					118
					117
					116
					115
					114
2	2	-	21024-3	WASHER,LOCK(NO.6)SHEAR PL	113
					112
4	4	-	21024-4	WASHER,LOCK(NO.8)SHEAR BL	110
					109
2	2	-	21018-4	NUT,HEX(4-40)DRAG	108
					107
					106
2	2	-	21022-2	NUT,HEX SL(8-32)DRAG STUD	105
					104
					103
2	2	-	2-21006-6	SCR,SKT SET(4-40x.62)DRAG	102
1	1	-	21009-2	SCR,SKT SET(1/4-20x.25)RAM	101
2	2	-	21017-2	SCR,DRIVE(#2x.19)ID PLATE	100
					99
1	1	-	461264-1	PLATE, IDENTIFICATION	98
2	2	-	2-21002-9	SCR,BHC(10-32x.75)SLUG BLADE	97
2	2	-	1-21002-6	SCR,BHC(6-32x.25)RET PL	96
2	2	-	8-21002-9	SCR,BHC(8-32x1.00)STRIPPER	95
4	4	-	2-21002-9	SCR,BHC(10-32x.75)CAP	94
2	2	-	2-22733-0	SCR,BHC(10-32x.38 LW)ANVIL	93
4	4	-	3-21002-5	SCR,BHC(1/4-20x.75)ST GD PL	92
3	3	-	2-22733-8	SCR,BHC(1/4-20x.62)HSG	91
1	-	-	22317-3	ELBOW,METAL T .25T-1/8 NPT	90
1	-	-	689446-2	AIR BLAST TUBE	89
1	-	-	455350-1	AIR BLAST ASSEMBLY	88
-	1	-	318848-1	AIR BLAST ASSEMBLY	87
3	3	-	2-21000-6	SCR,SHC(8-32x.38)STRIP GUIDE	86
					85
					84
					83
					82
					81
2	2	-	2-21000-0	SCR,SHC(6-32x.50)SH PL	80
1	-	-	455750-8	GUARD ASSY	79
-	REF	-	679532-1	INSERT, GUARD	78
1	-	-	1-465184-7	LUBRICATOR ASSY	77
					76
					75
1	1	-	690603-1	SPRING, ASSIST	74
1	1	-	23030-1	SCR,SKT CAP(6-32x.25)CP DSC	73
					72
					71
					70
QTY REQD PER ASSY			PART NO	DESCRIPTION	ITEM NO

QTY REQD PER ASSY			PART NO	DESCRIPTION	ITEM NO
					69
					68
					67
					66
					65
					64
					63
					62
					61
					60
					59
					58
					57
					56
					55
					54
					53
					52
					51
					50
					49
					48
					47
					46
					45
					44
					43
					42
					41
					40
					39
					38
					37
					36
					35
					34
					33
					32
					31
					30
					29
					28
					27
					26
					25
					24
					23
					22
					21
					20
					19
					18
					17
					16
					15
					14
					13
					12
					11
					10
					9
					8
					7
					6
					5
					4
					3
					2
					1
QTY REQD PER ASSY			PART NO	DESCRIPTION	ITEM NO

- ① RECOMMENDED SPARE PARTS.
- ② GREASE LIGHTLY.
- ③ GUARD MUST BE IN PLACE WHEN OPERATING APPLICATOR IN A BENCH MACHINE.
- ④ SEE DRAWING FOR COMPONENTS
- ⑤ USED FOR BENCH MODEL G ONLY.



LOC A
DIST 66
FOR -1
FOR -2

DIMENSIONS:		TOLERANCES UNLESS OTHERWISE SPECIFIED:	
INCHES	0.0005	PLC	±.0005
	0.001	1 PLC	±.001
	0.002	2 PLC	±.002
	0.005	3 PLC	±.005
	0.010	4 PLC	±.010
ANGLES:		SURFACE TEXTURE	
-		√	

REV	DATE	BY	CHKD	APPD	DESCRIPTION
C	11-2009	MY	GB		ECR-09-024527

DATE	BY	CHKD	APPD	DESCRIPTION
2/19/98	W.HOOVER			
2/19/98	C. ERISMAN			
2/19/98	T.ELBIN			

SCALE	SIZE	DRAWING NO	SHEET	REV
-	A1	680587	1 of 1	C

CUSTOMER ACCESSIBLE PRODUCTION DRAWING