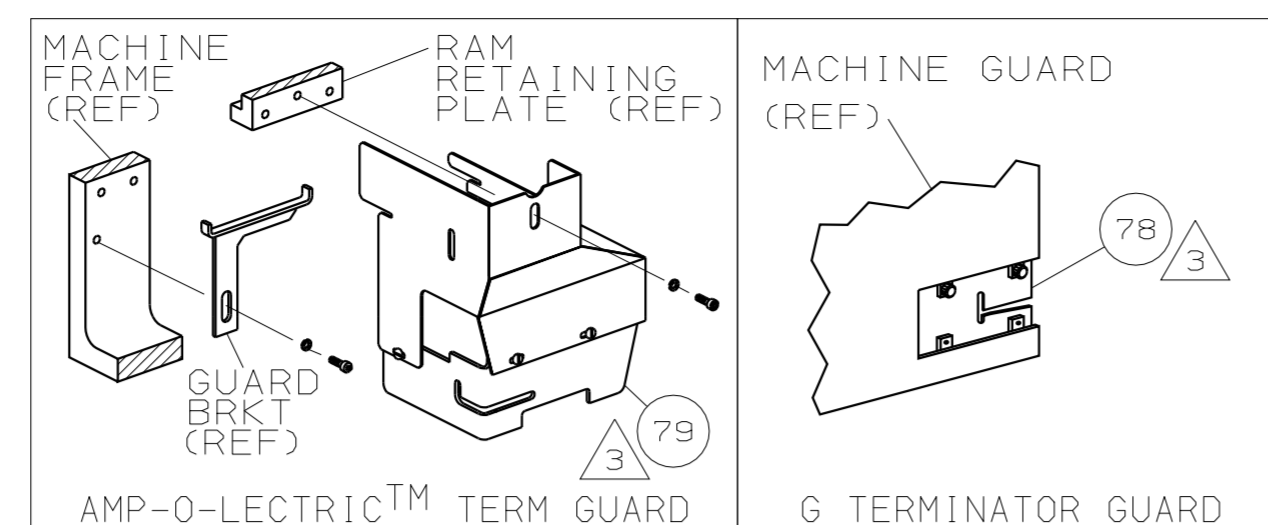


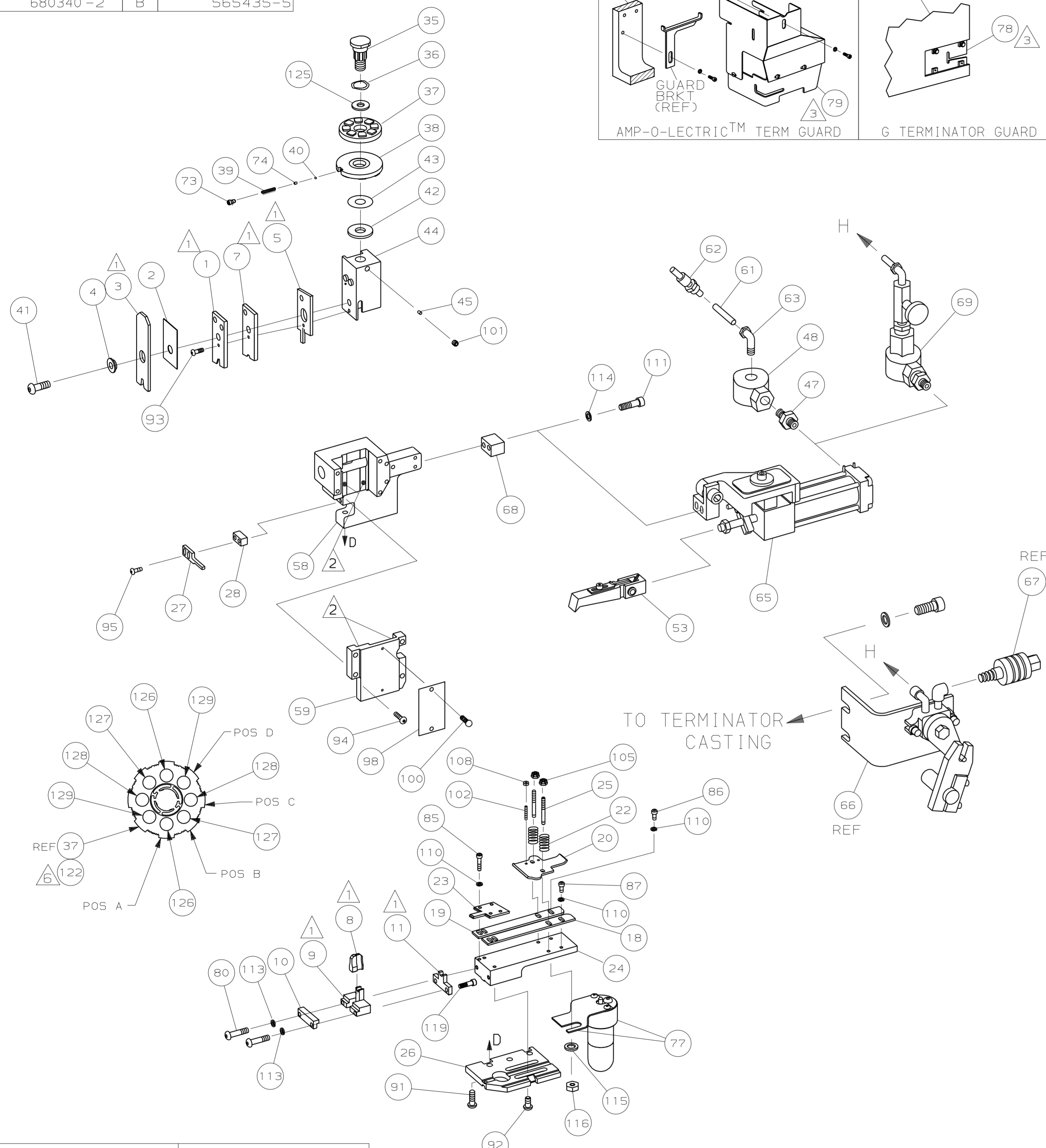
PART NUMBER	REV	FIRST USED
680340-1	B	354500-1
680340-2	B	565435-5



TERMINAL NAME: AMPLIVAR™ SPLICE WITH INSULATION SUPPORT			
PAD LTR	CRIMP HEIGHT	WIRE SIZE	
A	.070 ±.002 [1.77 ±0.05mm]	(2) 1.06mm ²	
B	.061 ±.002 [1.55 ±0.05mm]	(2) 0.8mm ²	
C	.059 ±.002 [1.51 ±0.05mm]	1.06mm ²	
D	.058 ±.002 [1.48 ±0.05mm]	(2) 0.71mm ²	
CRIMP	SIZE	TYPE	RANGE
WIRE	.110 [2.73mm]	F	1.06mm ² -1.32mm ²
INSUL	.155 [3.94mm]	F	∅2.54mm-3.81mm

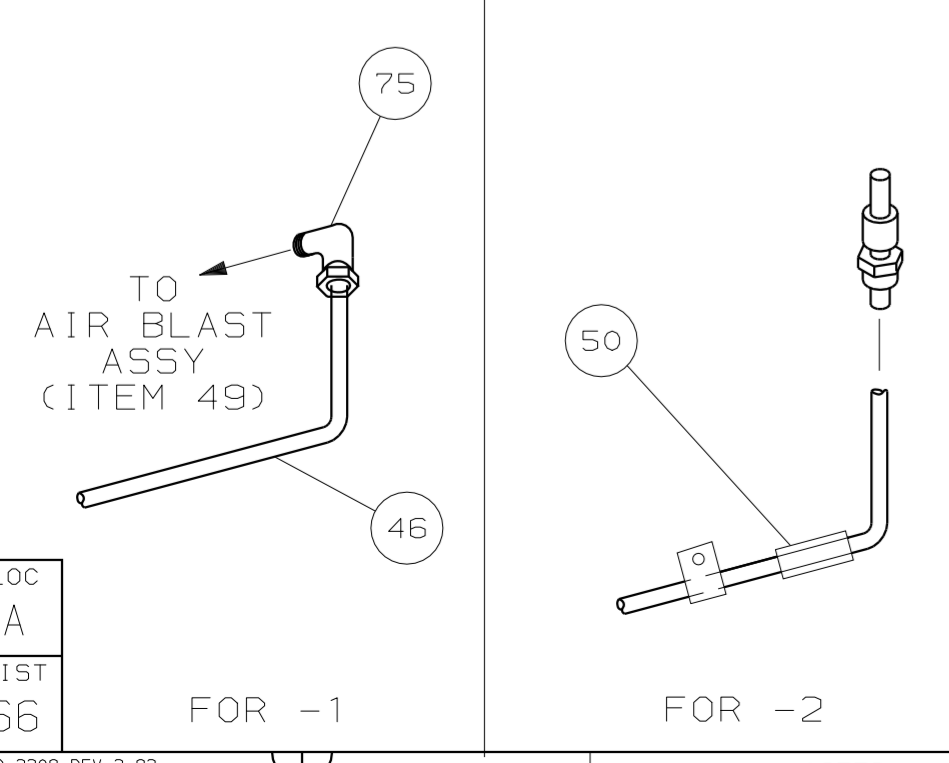
REV	BY	DATE	DESCRIPTION	ITEM NO
-1			BENCH MODEL G AIR FEED	70
-2			BENCH MODEL K AIR FEED	

THIS DRAWING IS A CONTROLLED DOCUMENT FOR AMP INCORPORATED. IT IS SUBJECT TO CHANGE AND THE CONTROLLING ENGINEERING ORGANIZATION SHOULD BE CONTACTED FOR THE LATEST REVISION.



QTY REQD PER ASSY	REV	U/M	DWG SIZE	PART NO	DESCRIPTION	ITEM NO
2	2	-	C	2-354779-2	PIN, WIRE DISC (.3100)D	129
2	2	-	C	1-354779-9	PIN, WIRE DISC (.3085)C	128
2	2	-	C	1-354779-5	PIN, WIRE DISC (.3065)B	127
2	2	-	C	9-354778-4	PIN, WIRE DISC (.2965)A	126
1	1	-	A	986950-1	WASHER, FLAT PRECISION	125
1	1	-	A	217238-1	GENERAL INSTRUCTION PACKAGE	124
1	1	-	-	4088039	EF APPL INST 408-8039	123
1	1	-	C	1-679600-5	PLASTIC WIRE DISC ASSY	122
						121
						120
2	2	-	A	1-21002-6	SCR,BHC(6-32x.25)PLATE STR GVI	119
						118
						117
1	1	-	A	21018-6	NUT, HEX (8-32)LUBE	116
1	1	-	A	21055-6	WASHER, FLAT #8 LUBE	115
2	2	-	A	22260-7	WASHER, FLAT #10	114
2	2	-	A	21024-3	WASHER, LOCK (#6) SHEAR PL	113
						112
2	2	-	A	4-21000-2	SCR,SHC(10-32x1.75)AIR FEED BRKT	111
7	7	-	A	21024-4	WASHER, LOCK (NO. 8) SHEAR BL	110
						109
2	2	-	A	21018-4	NUT, HEX (4-40) DRAG	108
						107
						106
2	2	-	A	21022-2	NUT, HEX SL(8-32)DRAG STUD	105
						104
						103
2	2	-	A	2-21006-6	SCR,SKT SET(4-40x.62)DRAG	102
1	1	-	A	21009-2	SCR,SKT SET(1/4-20x.25)RAM	101
2	2	-	A	21017-2	SCR,DRIVE(#2x.19)ID PLATE	100
						99
1	1	-	B	464249-1	PLATE, IDENTIFICATION	98
						97
						96
2	2	-	A	2-21002-2	SCR,BHC(8-32x.50)STRIPPER	95
4	4	-	A	2-21002-9	SCR,BHC(10-32x.75)CAP	94
1	1	-	A	2-21002-6	SCR,BHC(10-32x.38)SLUG BL	93
4	4	-	A	3-21002-5	SCR,BHC(1/4-20x.75)ST GD PL	92
3	3	-	A	2-22733-8	SCR,BHC(1/4-20x.62)H5G	91
						90
						89
						88
1	1	-	A	2-21000-9	SCR,SHC(8-32x.75)LUBE	87
1	1	-	A	2-21000-6	SCR,SHC(8-32x.38)STRIP GUIDE	86
4	4	-	A	2-21002-2	SCR,BHC(8-32x.50)R STRIP GUIDE	85
						84
						83
						82
						81
2	2	-	A	1-21000-9	SCR,SHC(6-32x.38)SHEAR PL	80
1	-	-	A	460980-2	GUARD ASSY	79
-	REF	-	A	679532-1	INSERT, GUARD	78
1	-	-	C	1-465184-7	LUBRICATOR ASSY	77
1	-	-	A	454406-1	SPACER, LUB BRACKET	76
-	1	-	A	22317-3	ELBOW, COPPER TUBE	75
1	1	-	A	690603-1	SPRING, ASSIST	74
1	1	-	A	23030-1	SCR,SKT CAP(6-32x.25)CP DSC	73
						72
						71

REV	BY	DATE	DESCRIPTION	ITEM NO		
1	-	-	C	692655-5	AIR FEED VALVE ASSY	69
1	1	-	A	461690-3	SPACER, AIR FEED	68
REF	-	-	A	24042-2	VALVE, SHUT OFF	67
REF	-	-	C	692655-6	AIR FEED VALVE ASSY	66
1	1	-	B	460277-1	AIR FEED ASSY (1 INCH)	65
2	2	-	A	4-21000-3	SCR,SHC(10-32x1.00)AIR ASSY	64
-	1	-	A	983427-6	ELBOW, SWIVEL 1/8 NPT - 1/4 T	63
-	1	-	A	23238-1	QUICK DISCONNECT	62
12.00	12.00	IN	A	27319-4	TUBING, POLY-FLO ∅.25	61
						60
1	1	-	C	462926-1	CAP, RAM	59
1	1	-	D	453736-1	HOUSING	58
						57
						56
						55
						54
1	1	-	B	460680-7	FEED FINGER ASSY	53
						52
						51
1	-	-	A	318848-1	AIR BLAST ASSEMBLY	50
-	1	-	A	455350-1	AIR BLAST ASSEMBLY	49
-	1	-	A	22374-7	VALVE, QUICK EXHAUST	48
-	1	-	A	22304-1	NIPPLE, HEX 1/8 NPT	47
-	1	-	A	689446-2	TUBE, AIR BLAST	46
1	1	-	A	690191-1	PLUG, NYLON	45
1	1	-	A3	662559-1	RAM	44
1	1	-	A	690125-1	WASHER, LAMINATED	43
1	1	-	A	690124-4	WASHER, RAM	42
1	1	-	A	7-21002-9	BOLT, CRIMPER(5/16-24x1.00)	41
1	1	-	A	23241-6	BALL, STEEL	40
1	1	-	A	690170-1	SPRING, COMPRESSION	39
1	1	-	C	690142-1	DISC, INSULATION	38
1	1	-	D	354777-1	WIRE DISC, PLASTIC	37
1	1	-	A	22480-5	WASHER, SPRING	36
1	1	-	B	690212-1	POST, RAM	35
						34
						33
						32
						31
						30
						29
1	1	-	B	1-690451-6	SPACER, STRIPPER	28
1	1	-	A	460276-1	STRIPPER	27
1	1	-	D	459584-1	PLATE, BASE	26
2	2	-	A	22354-8	DRAG, STUD	25
1	1	-	B	462931-2	PLATE, STRIP GUIDE	24
1	1	-	C	462932-6	PLATE, STRIP COVER	23
2	2	-	A	4-22281-1	SPRING, DRAG	22
						21
1	1	-	A	462925-1	DRAG, STOCK	20
1	1	-	B	462929-3	GUIDE, STRIP (REAR)	19
1	1	-	C	462930-3	GUIDE, STRIP (FRONT)	18
						17
						16
						15
						14
						13
						12
1	1	-	B	459684-5	PLATE, GUIDE RETAINER	11
1	1	-	C	459580-2	PLATE, ANVIL RETAINER	10
1	1	-	B	1-459583-1	BODY, ANVIL	9
1	1	-	D	318573-4	ANVIL	8
1	1	-	B	662603-1	BLADE, SLUG	7
						6
1	1	-	A3	662601-1	CRIMPER GUIDE	5
1	1	-	B	238009-4	SPACER, BLOCK CRIMPER	4
1	1	-	C	7-456134-6	CRIMPER, INSULATION	3
1	1	-	B	1-455888-1	SPACER, CRIMPER	2
1	1	-	A3	662602-2	CRIMPER, WIRE	1



- 1 RECOMMENDED SPARE PARTS.
- 2 GREASE LIGHTLY.
- 3 GUARD MUST BE IN PLACE WHEN OPERATING APPLICATOR IN A BENCH MACHINE.
- 4 SEE DRAWING FOR COMPONENTS.
- 5 ITEM 78 USED WITH G TREMINATOR ONLY.
- 6 REPLACE ITEM 37 WITH ITEM 122 TO USE THE FOLLOWING WIRE SIZES:
- 7 ITEM 122 TO BE SHIPPED WITH APPLICATOR.

CRIMPING DATA		
PAD LTR	CRIMP HEIGHT	WIRE SIZE
A	.078 ±.002 [1.98 ±0.05mm]	(2) 1.26mm ²
B	.065 ±.002 [1.65 ±0.05mm]	1.32mm ²
C	NOT	USED
D	NOT	USED

LOC A
DIST 66

THIS INFORMATION IS CONFIDENTIAL AND IS DISCLOSED TO YOU ON CONDITION THAT NO FURTHER DISCLOSURE IS MADE BY YOU TO OTHER THAN AMP PERSONNEL WITHOUT WRITTEN AUTHORIZATION FROM AMP INCORPORATED, HARRISBURG, PA.