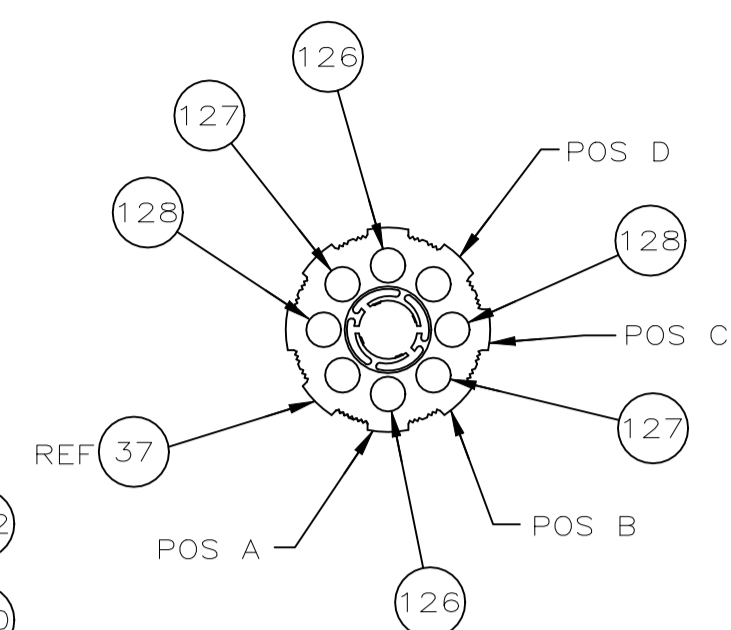
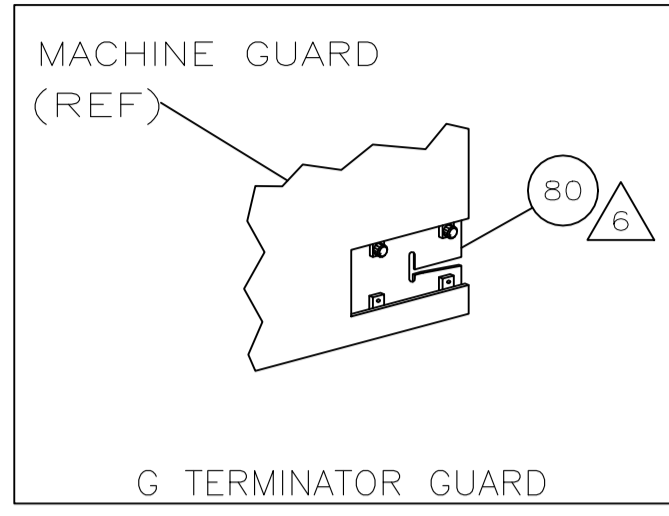
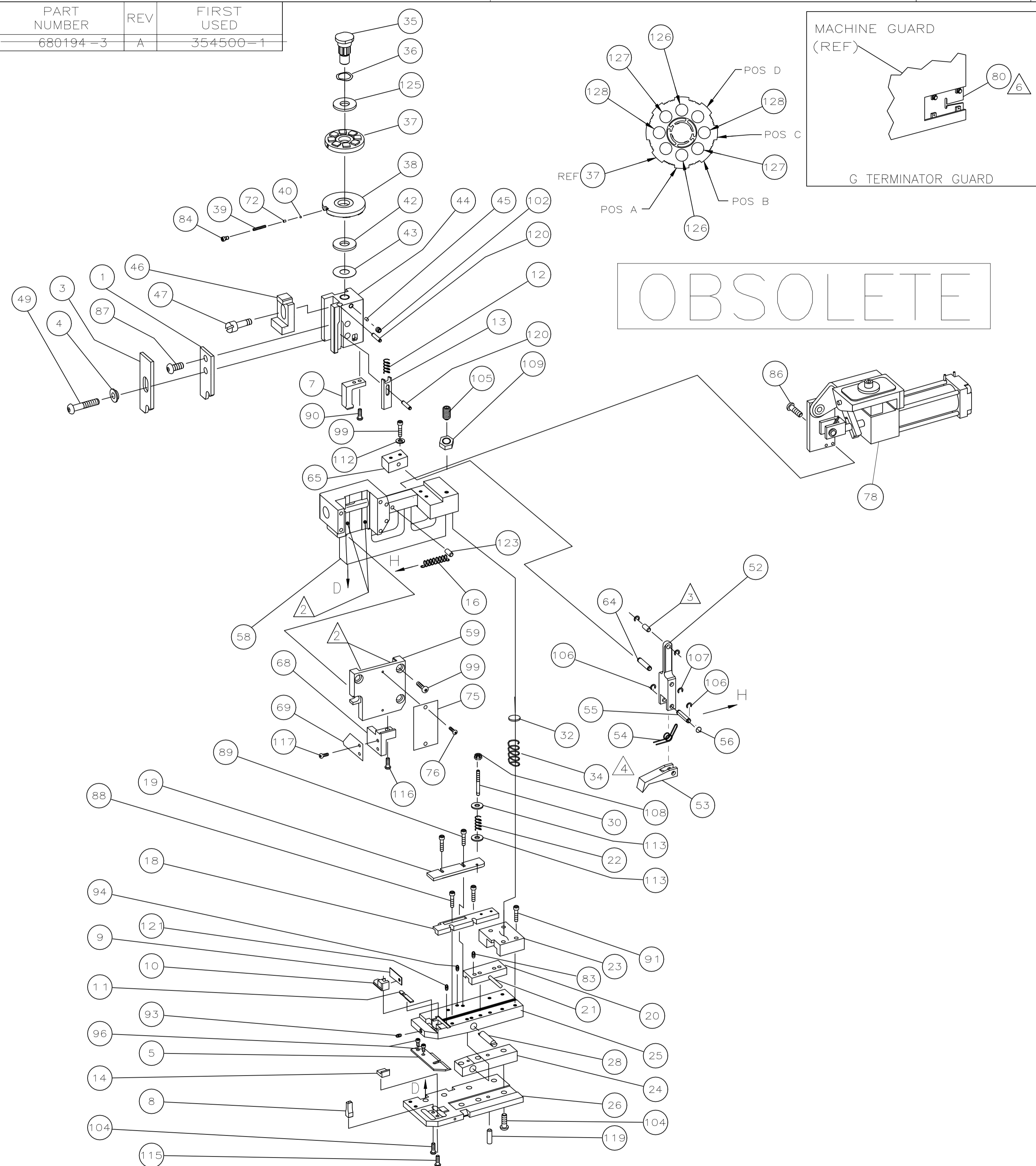


DRAWING MADE IN THIRD ANGLE PROJECTION

680194 680194

<UT161B>DEPT2230>AMP07567>EDMM00

| PART NUMBER | REV | FIRST USED |
|-------------|-----|------------|
| 680194-3 | A | 354500-1 |



| TERMINAL NAME: FLAG & SPADE | | CRIMPING DATA | |
|-----------------------------|---------------|---------------|---------------------------|
| RING | SPADE | PAD LTR | CRIMP HEIGHT |
| 42189 | 42187 | | |
| 42190 | 42188 | | |
| 42191 | 61902 | A | .072 ±.002 [1.83 ±0.05mm] |
| 42903 | 63053 | B | .062 ±.002 [1.57 ±0.05mm] |
| 63262 | | C | .056 ±.002 [1.42 ±0.05mm] |
| | | D | .052 ±.002 [1.32 ±0.05mm] |
| CRIMP | SIZE | TYPE | RANGE |
| WIRE | .160 [4.06mm] | TAB-LOCK | 18-12 |
| INSUL | .180 [4.57mm] | 0 | .110-.210 |

| QTY | U/M | DWG SIZE | PART NO | DESCRIPTION | ITEM NO |
|-----|-----|----------|------------|--------------------------------|---------|
| 2 | - | | 1-354779-8 | PIN, WIRE DISC (.3080)D | 129 |
| 2 | - | | 1-354779-0 | PIN, WIRE DISC (.3040)C | 128 |
| 2 | - | | 9-354778-8 | PIN, WIRE DISC (.2985)B | 127 |
| 2 | - | | 7-354778-8 | PIN, WIRE DISC (.2885)A | 126 |
| 1 | - | | 986950-1 | WASHER, FLAT PRECISION | 125 |
| 1 | - | | 1-21030-2 | PIN, DOWEL (Ø187X.62) | 124 |
| 1 | - | | 1-21030-6 | PIN, DOWEL (Ø187X1.25) | 123 |
| 2 | - | | 3-21028-2 | PIN, SLOTTED SPRING (Ø094X.25) | 121 |
| 2 | - | | 4-21028-9 | PIN, SLOTTED SPRING (Ø125X.38) | 120 |
| 1 | - | | 21029-5 | PIN, SLOTTED SPRING (Ø188X.75) | 119 |
| 2 | - | | 1-21002-6 | SCREW, SBHC (6-32 x .25) STOP | 117 |
| 1 | - | | 2-21000-6 | SCREW, SHC (8-32 x .38) MTG | 116 |
| 1 | - | | 1-21000-4 | SCREW, SHC (4-40 x .38) INSERT | 115 |
| 4 | - | | 1-21899-3 | WASHER, FLAT (8) | 113 |
| 2 | - | | 21024-5 | WASHER, LOCK (#10) | 112 |
| 1 | - | | 1-22202-7 | NUT, HEX (5/16-24) | 109 |
| 2 | - | | 21022-2 | NUT, HEX (LOCKING) (8-32) | 108 |
| 1 | - | | 1-21986-2 | RING, RET "E" Ø5/16 | 107 |
| 2 | - | | 21045-3 | RING, RET "C" Ø5/16 | 106 |
| 1 | - | | 8-21007-5 | SCREW, SKT SET (5/16-24x.75) | 105 |
| 7 | - | | 2-22733-8 | SCREW, BHC (1/4-20X.63) | 104 |
| 1 | - | | 21009-2 | SCREW, SKT SET (1/4-20x.25) | 102 |
| 6 | - | | 3-21000-8 | SCREW, SHC (10-32X.88) | 99 |
| 2 | - | | 7-21000-6 | SCREW, SHC (10-32X.38) | 96 |
| 2 | - | | 4-21006-0 | SCREW, SKT SET (8-32X.25) | 94 |
| 1 | - | | 21061-9 | SCREW, SKT SET (8-32X.25) | 93 |
| 4 | - | | 2-21000-9 | SCREW, SHC (8-32X.75) | 91 |
| 2 | - | | 1-23030-1 | SCREW, SHC (NYLOK)(8-32X.62) | 90 |
| 2 | - | | 2-21002-3 | SCREW, BHC (8-32X.62) | 89 |
| 2 | - | | 2-21002-2 | SCREW, BHC (8-32X.50) | 88 |
| 1 | - | | 2-21002-1 | SCREW, BHC (8-32X.38) | 87 |
| 2 | - | | 21001-3 | SCREW, SHC (1/4-20X.62) | 86 |
| 1 | - | | 23030-1 | SCREW, SHC (NYLOK)(6-32X.25) | 84 |
| 2 | - | | 3-21012-1 | SCREW, SKT SET 6-38X.38 | 83 |
| REF | - | | 679532-1 | INSERT, GUARD | 80 |
| 1 | - | | 462622-2 | AIR FEED ASSEMBLY | 78 |
| 1 | - | | 694427-1 | PLATE, APPL MNT | 77 |
| 2 | - | | 21017-2 | SCR_DRIVE(#2X.19)ID | 76 |
| 1 | - | | 461264-1 | PLATE, IDENTIFICATION | 75 |
| 1 | - | | 690603-1 | SPRING, ASSIST | 72 |

| QTY | U/M | DWG SIZE | PART NO | DESCRIPTION | ITEM NO |
|-----|-----|----------|------------|-------------------------------|---------|
| 1 | - | | 318530-1 | STOP, WIRE | 70 |
| 1 | - | | 318529-1 | BLOCK, MOUNTING | 69 |
| 1 | - | | 456987-1 | BLOCK, PIVOT | 67 |
| 1 | - | | 457058-1 | PIN, PIVOT | 66 |
| 1 | - | | 318528-1 | CAP, RAM | 65 |
| 1 | - | | 457079-1 | HOUSING | 64 |
| 1 | - | | 25745-1 | RING, SPLIT | 63 |
| 1 | - | | 240624-1 | PIN, FEED FINGER | 62 |
| 1 | - | | 691499-1 | SPRING, FEED FINGER | 61 |
| 1 | - | | 454568-3 | FINGER, FEED | 60 |
| 1 | - | | 457057-1 | ARM, PIVOT | 59 |
| 1 | - | | 3-21002-5 | BOLT, CRIMPER | 58 |
| 1 | - | | 22353-8 | SCREW, SHOULDER | 57 |
| 1 | - | | 690578-1 | BLOCK, INSULATION ADJUST | 56 |
| 1 | - | | 690191-1 | PLUG, NYLON | 55 |
| 1 | - | | 454574-1 | RAM | 54 |
| 1 | - | | 690125-1 | WASHER, LAMINATED | 53 |
| 1 | - | | 1-690124-1 | WASHER, RAM | 52 |
| 1 | - | | 23241-6 | BALL, STEEL | 51 |
| 1 | - | | 690170-1 | SPRING, COMPRESSION | 50 |
| 1 | - | | 690142-1 | DISC, INSULATION | 49 |
| 1 | - | | 354777-1 | WIRE DISC, PLASTIC | 48 |
| 1 | - | | 22480-5 | WASHER, SPRING | 47 |
| 1 | - | | 690212-1 | POST, RAM | 46 |
| 1 | - | | 3-23846-5 | SPRING, HINGE BAR | 45 |
| 1 | - | | 690573-1 | SPACER, SPRING | 44 |
| 2 | - | | 22354-8 | STUD, DRAG | 43 |
| 1 | - | | 690582-1 | PIN, HINGE | 42 |
| 1 | - | | 684905-1 | PLATE, BASE | 41 |
| 1 | - | | 354679-1 | HINGE BAR | 40 |
| 1 | - | | 690571-1 | BLOCK, STABILIZER | 39 |
| 1 | - | | 690585-1 | BLOCK, PRESSURE | 38 |
| 2 | - | | 23470-8 | SPRING, DRAG | 37 |
| 1 | - | | 21029-9 | LEVER, DRAG | 36 |
| 1 | - | | 457093-4 | DRAG, STOCK | 35 |
| 1 | - | | 454573-1 | GUIDE, STRIP (REAR) | 34 |
| 1 | - | | 318739-1 | GUIDE, STRIP (FRONT) | 33 |
| 1 | - | | 2-22287-6 | SPRING, FEED RETURN | 32 |
| 1 | - | | 354678-1 | INSERT, TERMINAL POSITIONER | 31 |
| 1 | - | | 455279-3 | POSITIONER, TERMINAL | 30 |
| 1 | - | | 5-22280-5 | SPRING, TERM. POSITIONER | 29 |
| 1 | - | | 454712-2 | PLATE, REAR SHEAR | 28 |
| 1 | - | | 454709-1 | ANVIL INSERT | 27 |
| 1 | - | | 690569-1 | PLATE, FRONT SHEAR | 26 |
| 1 | - | | 690575-1 | ANVIL | 25 |
| 1 | - | | 454572-1 | BLADE, SLUG | 24 |
| 1 | - | | 684906-1 | PLATE, ANVIL RETAINING | 23 |
| 1 | - | | 690574-1 | SPACER, TUBULAR INSUL CRIMPER | 22 |
| 1 | - | | 690588-1 | CRIMPER, INSULATION | 21 |
| 1 | - | | 690587-1 | CRIMPER, WIRE | 20 |

- 1 RECOMMENDED SPARE PARTS.
- 2 GREASE LIGHTLY.
- 3 LUBRICATE DAILY USING NO. 20 MACHINE OIL.
- 4 AFTER ASSEMBLY OF APPLICATOR, PROPER SPRING PRESSURE (ITEM 34) CAN BE OBTAINED BY TIGHTENING SET SCREW (ITEM 105) UNTIL CONTACT IS MADE WITH SPACER (ITEM 32) THEN TIGHTEN AN ADDITIONAL 5 1/2 - 6 REVOLUTIONS.
- 5 GUARD MUST BE IN PLACE WHEN OPERATING APPLICATOR IN A BENCH MACHINE.
- 6 TO BE SHIPPED WITH ASSEMBLY.

LOC A
DIST 66

THIS DRAWING IS A CONTROLLED DOCUMENT FOR AMP INCORPORATED. IT IS THE PROPERTY OF AMP INCORPORATED. IT IS TO BE KEPT IN CONFIDENTIALITY AND NOT TO BE DISCLOSED TO ANY OTHER PERSONNEL WITHOUT WRITTEN AUTHORIZATION FROM AMP INCORPORATED, HARRISBURG, PA. REVISIONS SHOULD BE CONTACTED FOR THE LATEST REVISION.

THIS INFORMATION IS CONFIDENTIAL AND IS DISCLOSED TO YOU ON CONDITION THAT YOU WILL NOT DISCLOSE IT TO ANY OTHER PERSONNEL WITHOUT WRITTEN AUTHORIZATION FROM AMP INCORPORATED, HARRISBURG, PA.