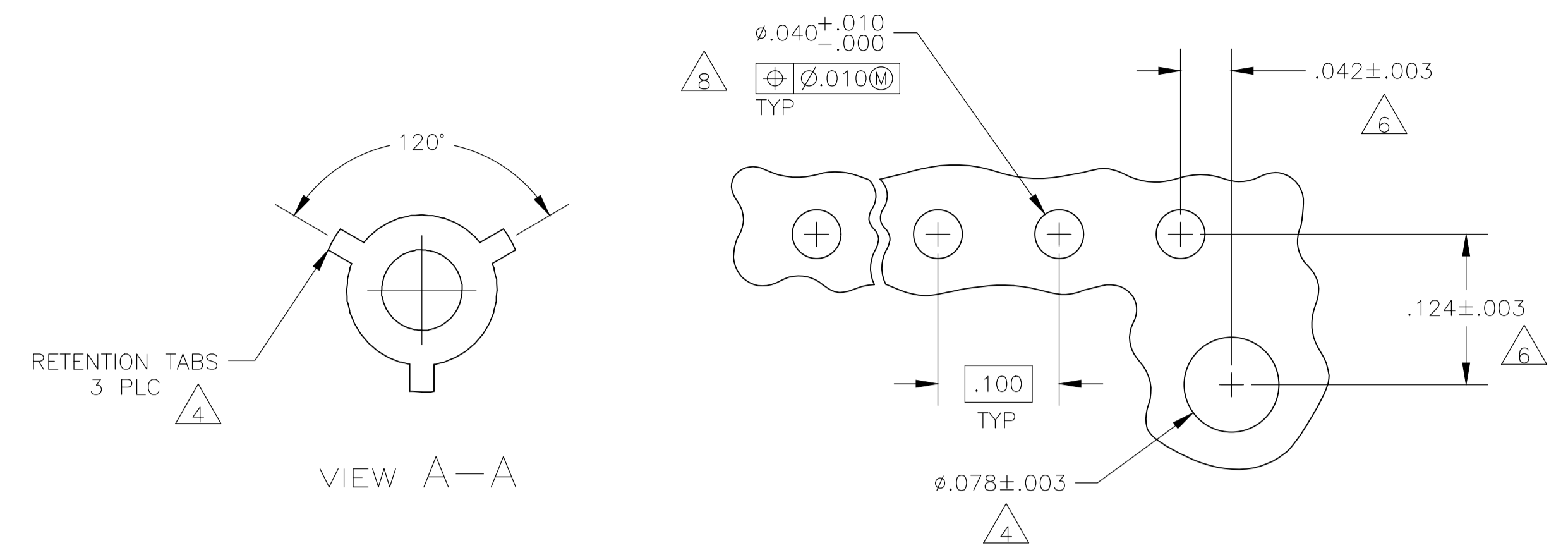
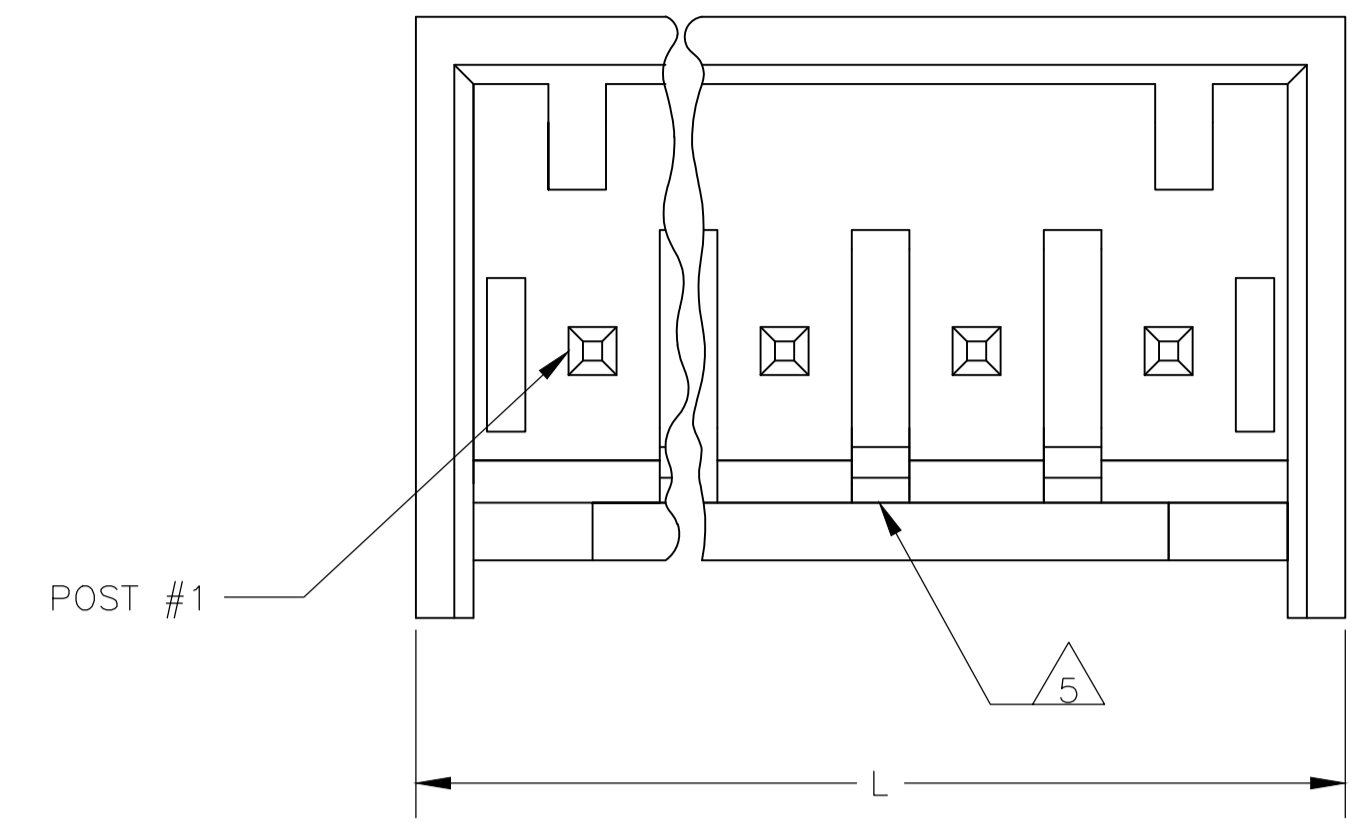
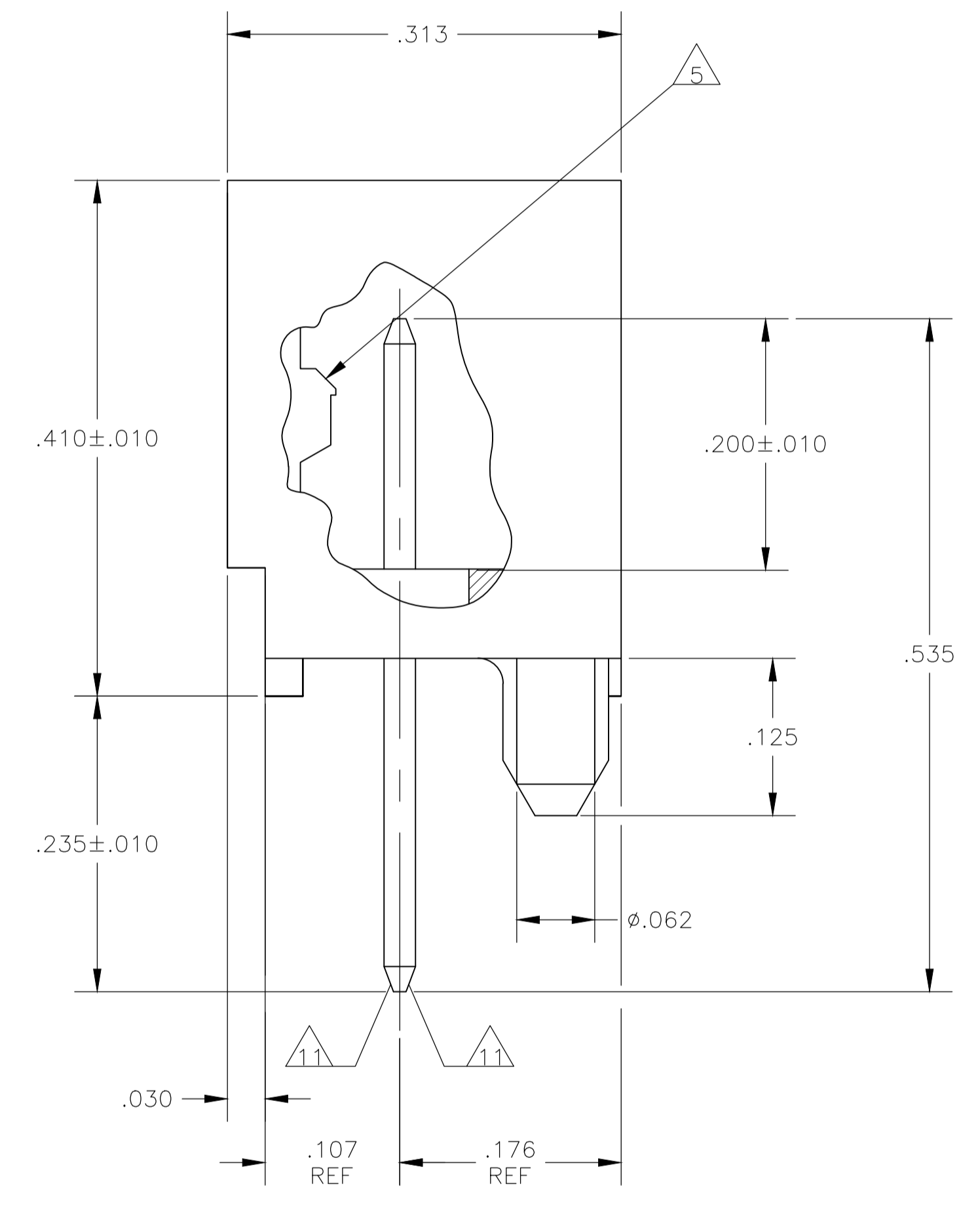
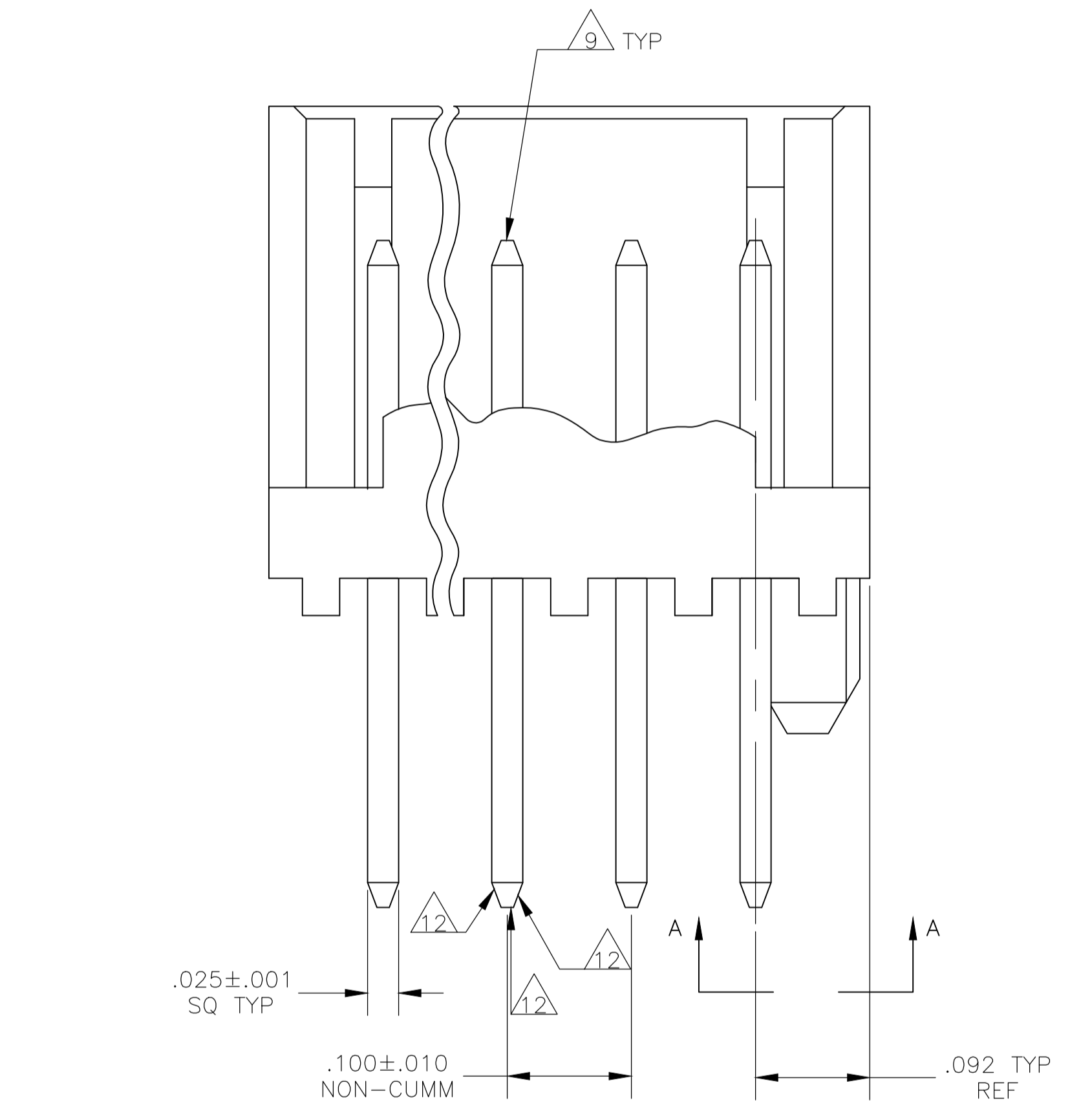


LOC		DIST		REVISIONS			
CM	00	REV	DATE	BY	APP'D	REV	DATE
G		REVISED PER ECR-18-003423	29MAR2018	BDA	SG		



RECOMMENDED MOUNTING HOLE PATTERN FOR .063 THK PRINTED CIRCUIT BOARD

- 1 MATERIAL: HEADER- POLYESTER UL94V-0 (BLACK)
POST- COPPER ALLOY.
- 2 SOLDER SIDE OF P.C. BOARD SHOWN.
- 3. PARTS COMPLY WITH AMP SOLDERABILITY SPEC 109-11-2/12.
- 4 THE RETENTION TABS PROVIDE A ONE-TIME INTERFERENCE FIT IN THE .078 DIAMETER BOARD HOLE FOR HEADER ASSEMBLY RETENTION DURING SOLDERING.
- 5 LATCH DETENT FEATURE OCCURS 2 PLACES ON EACH END (MAXIMUM OF FOUR PER PART).
- 6 COORDINATE DIMENSION APPLIES FROM CENTER OF ACTUAL FEATURE.
- 7 POST: 100% MATTE TIN OR BRIGHT TIN (93/7) PLATING.
- 8 ONE HOLE MAY BE UNDERSIZED .032-.035 DIA FOR ASSEMBLY RETENTION DURING WAVE SOLDERING.
- 9 POST MUST WITHSTAND 3.0 LBS (13.34 NEWTONS) MIN FORCE WITHOUT DISLODGING, EITHER DIRECTION.
- 10. UL RECOGNIZED (UR) LOGO AND CSA LOGO WILL APPEAR ON THE SIDE OF THE PART. THE AMP LOGO MAY APPEAR ON THE SIDE OR ON BOTTOM OF PART.
- 11 TWO SIDES OF TAPER, AS SHOWN, MUST BE PLATED. TYPICAL, BOTH ENDS.
- 12 TWO SIDES OF TAPER, AS SHOWN, AND TIP MAY BE UNPLATED. TYPICAL, BOTH ENDS.
- 13 OBSOLETE PARTS: OBSOLETE CIS STREAMLINING PER D.RENAUD/D.SINISI
- 14 OBSOLETE PARTS



IN	MM	IN	MM	IN	MM
.025	0.64	.092	2.34	.410	10.41
.010	0.25	.078	1.98	.313	7.95
.005	0.13	.062	1.57	.235	5.97
.003	0.08	.042	1.07	.176	4.47
.001	0.03	.040	1.02	.125	3.18
.000250	0.00635	.035	0.89	.124	3.15
.0001500	0.00381	.032	0.81	.107	2.72
.000	0.00	.030	0.76	.100	2.54
IN	MM	IN	MM	IN	MM

CONVERSION TABLE

	YES	.884	22.45	8	2-647421-8	
	YES	.684	17.37	6	2-647421-6	
	YES	.484	12.29	4	2-647421-4	
13	SUPERCEDED	NO	.884	22.45	8	-647421-8-
13	SUPERCEDED	NO	.684	17.37	6	-647421-6-
14	SUPERCEDED	NO	.484	12.29	4	-647421-4-
	LEADFREE	INCH	MM	NO OF POSN	PART NUMBER	
		L				

THIS DRAWING IS A CONTROLLED DOCUMENT.

DIMENSIONS:	TOLERANCES UNLESS OTHERWISE SPECIFIED:	DIN K. WHITAKER 29JUL02	TE Connectivity
INCHES:		CHK D. ROSSI 29JUL02	
	0 PLC ± - 1 PLC ± - 2 PLC ± - 3 PLC ± - 4 PLC ± - ANGLES ± -	APP'D D. ROSSI 29JUL02	NAME
MATERIAL	FINISH	APPLICATION SPEC	MTA-100 SHROUDED HEADER ASSEMBLY, FRICTION LOCK, STRAIGHT POST, TIN OR TIN LEAD PLATED, SPECIAL
		SIZE	CAGE CODE DRAWING NO
		WEIGHT	A1 00779 C=647421
		CUSTOMER DRAWING	SCALE 10:1 SHEET 1 OF 1 REV G