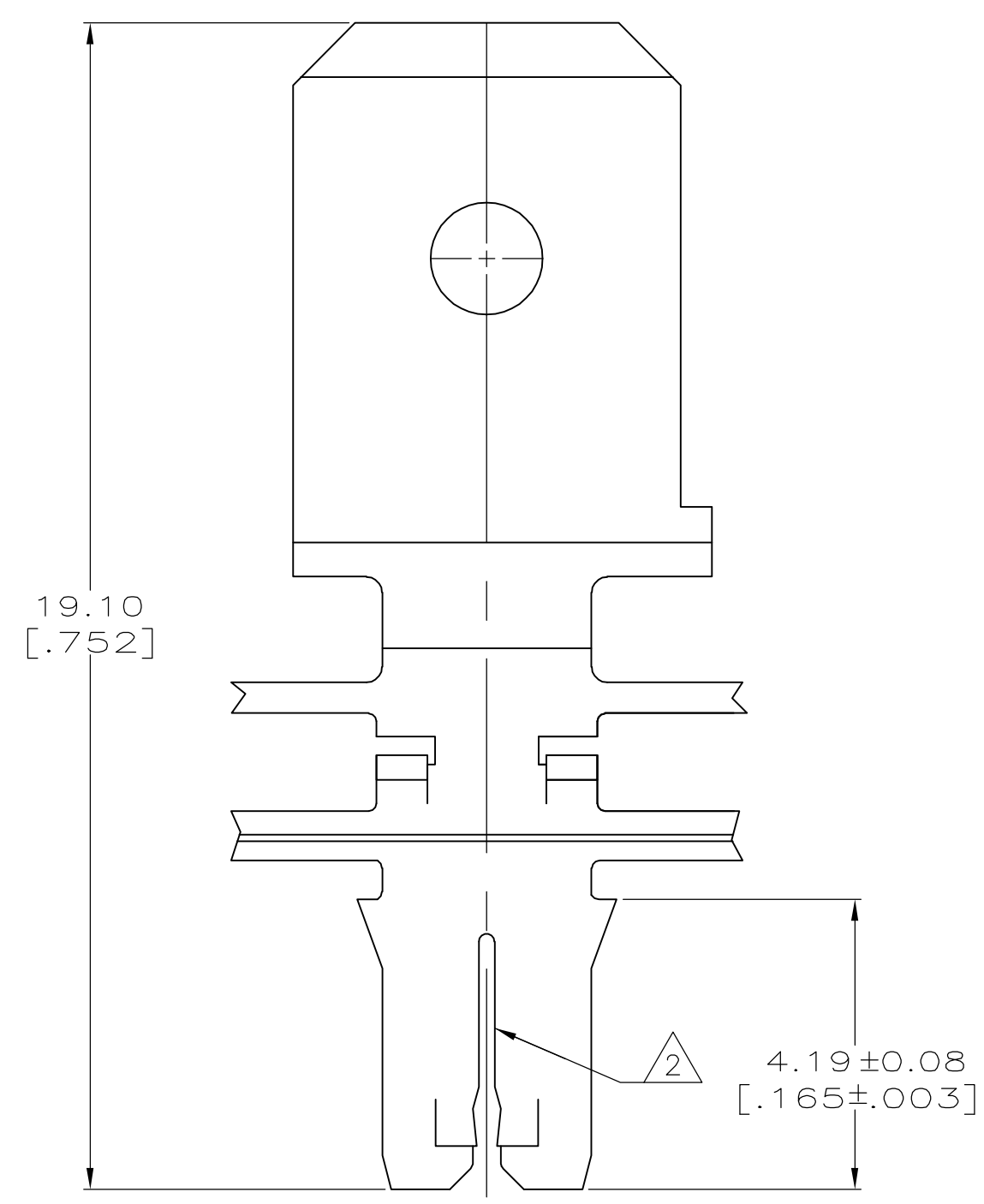
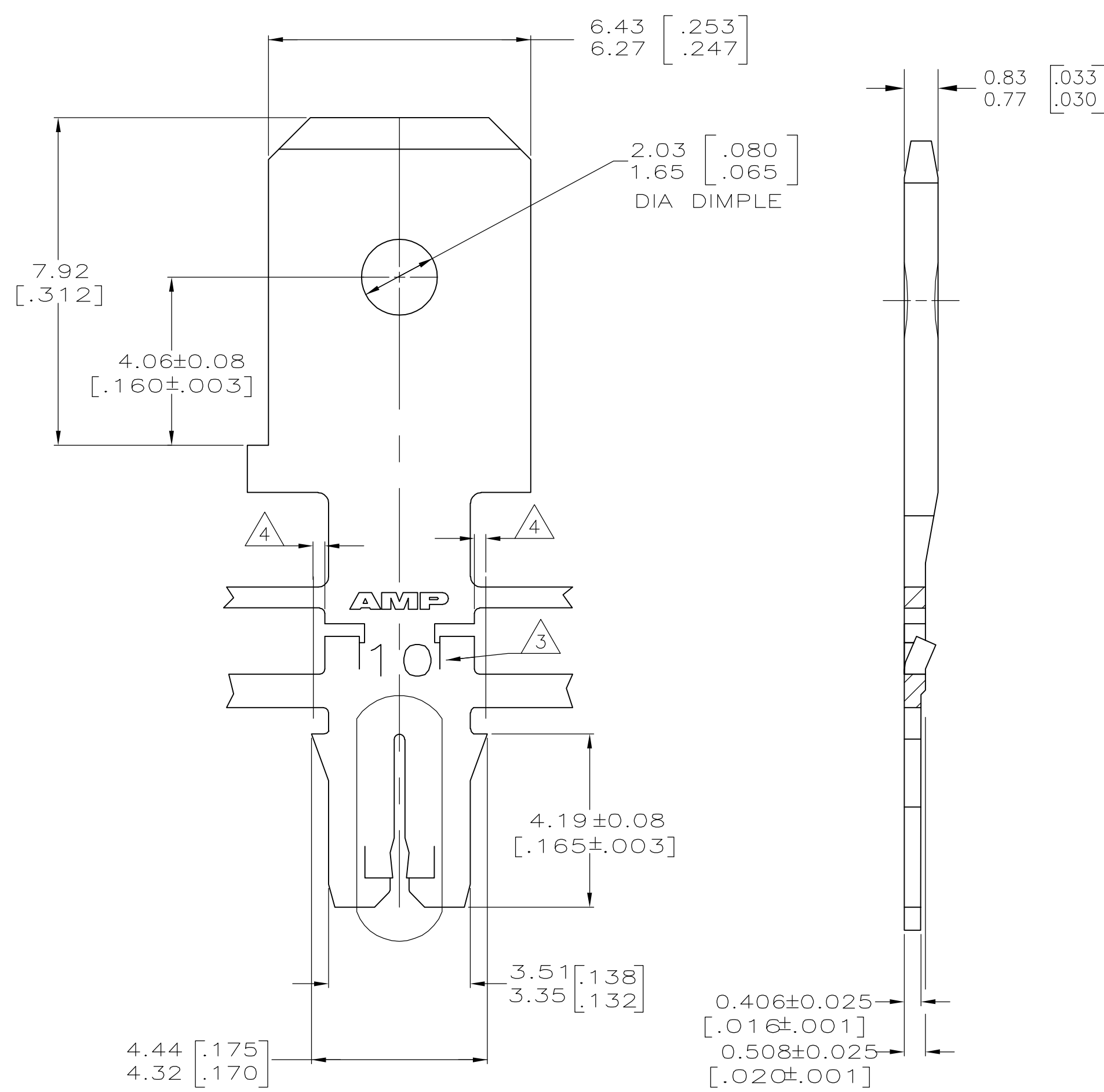


LOC	DIST	REVISIONS					
AF	50	P	LTR	DESCRIPTION	DATE	DWN	APVD
		G		REVISED PER ECR-06-010423	22SEP06	HMR	KR

- 1 CONTINUOUS STRIP ON REELS WITH TERMINALS LOCATED ON 8.38±0.08 [.330±.003] CENTERS
- 2 SLOT ACCEPTS 0.36-0.51mm [#27-#24] AWG COPPER MAGNET WIRE. TWO WIRES OF THE SAME SIZE MAX PER SLOT
- 3 IDENTIFICATION NUMBER 10 FOR THE MAGNET WIRE SLOT SIZE
- 4 0.25[.010] MAX CARRIER CUT-OFF TABS
- 5 PRE-PRODUCTION - F.A.S.R. REQUIRED.



OBSELETE	082 PRE-MILLED BRASS	5	63742-2
	<del>4M PRE-MILLED BRASS</del>		<del>63742-1</del>
MATERIAL		PART NUMBER	

THIS DRAWING IS A CONTROLLED DOCUMENT.		DWN	L.A.MAYER	9-1-93		Tyco Electronics Corporation	
DIMENSIONS: mm [INCHES]		CHK	M.S. FEHER	9-1-93		Harrisburg, PA 17105-3608	
TOLERANCES UNLESS OTHERWISE SPECIFIED:		APVD	A.HUNT III	9-1-93	NAME		
0 PLC ± -	1 PLC ± -	PRODUCT SPEC		TAB, 6.35 [.250] FASTON,™			
2 PLC ± 0.13 [.005]	3 PLC ± -	APPLICATION SPEC		MAG-MATE™ Slim Line			
4 PLC ± -	ANGLES ± -	114-2140		SIZE	CAGE CODE	DRAWING NO	RESTRICTED TO
FINISH		WEIGHT		A2	00779	G-63742	-
SEE TABLE		0.002032 [.000080] MIN TIN PLATE		CUSTOMER DRAWING		SCALE 10:1	SHEET 1 of 1
						REV	G