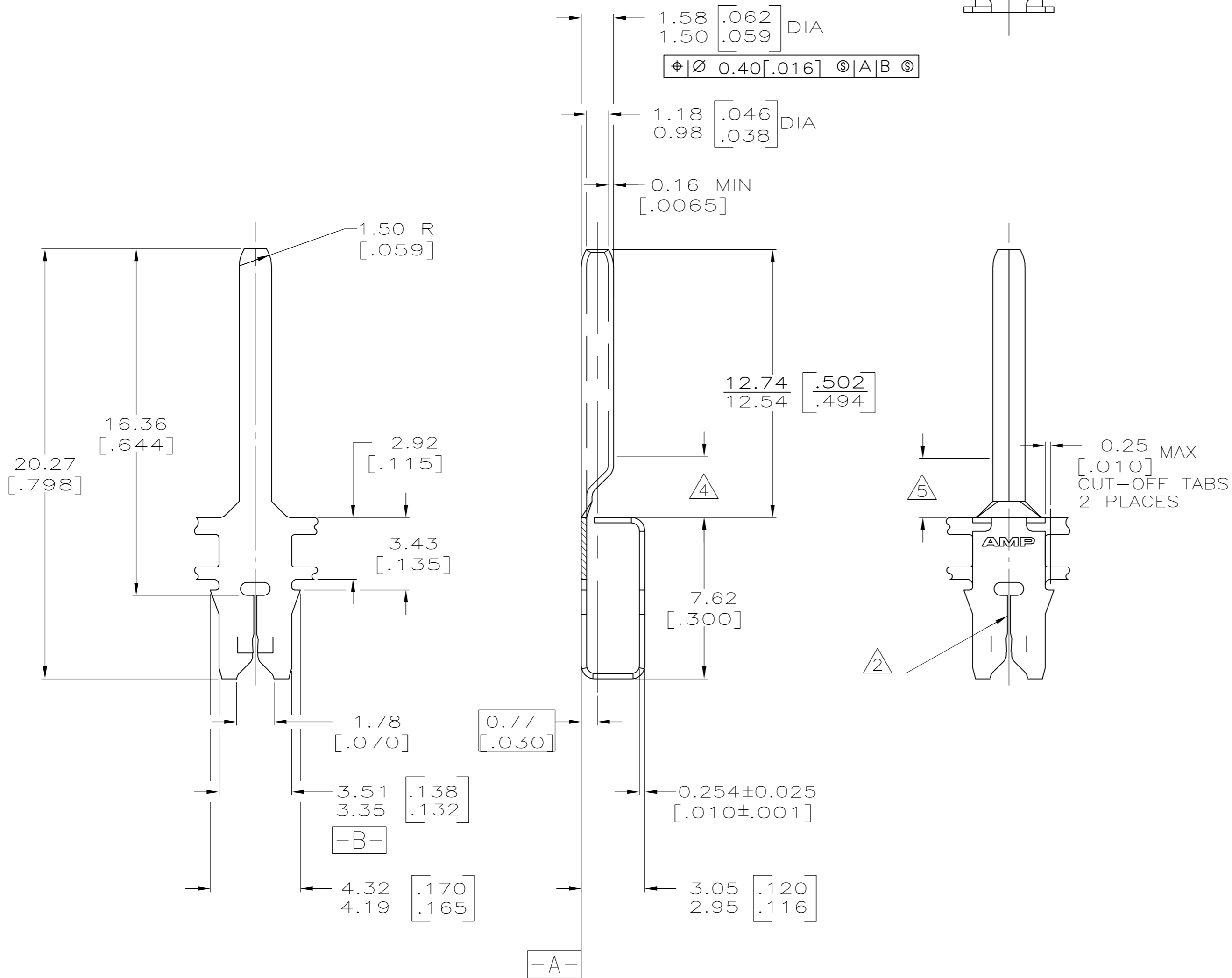
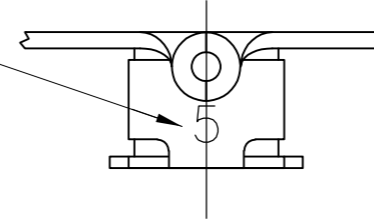


THIS DRAWING IS UNPUBLISHED. RELEASED FOR PUBLICATION
 © COPYRIGHT - By - ALL RIGHTS RESERVED.

LOC	DIST	REVISIONS			
P	LTR	DESCRIPTION	DATE	DWN	APVD
AF	50	K1	ECR-13-017177	05NOV13	PKS RRP

IDENTIFICATION NUMBER 5 FOR
MAGNET WIRE RANGE



- 1 CONTINUOUS STRIP ON REELS (NO SPLICES) WITH TERMINALS LOCATED ON 5.59 ± 0.08 $[.220 \pm .003]$ CENTERS.
- 2 SLOT TERMINATES EITHER SINGLE OR DOUBLE COPPER MAGNET WIRES OF THE SAME SIZE, 0.23-0.32mm [#31-#28] AWG.
- 3 PRE-TIN PLATED PER MIL-T-10727 OVER PRE-COPPER UNDERPLATE PER MIL-C-14550, WITH ANTI-CORROSION LUBE COATING.
- 4 2.90 $[.114]$ MIN DISTANCE FOR BASE OF PIN TO BE CLOSED FOR INJECTION MOLDING.
- 5 2.80 $[.110]$ MAX DISTANCE FOR TRANSITION FROM FLAT TO ROUND.

63722-1

THIS DRAWING IS A CONTROLLED DOCUMENT.		DWN MICHAEL S. FEHER 6/18/93																				
DIMENSIONS: INCHES		CHK LORI A. MAYER 7/12/93																				
TOLERANCES UNLESS OTHERWISE SPECIFIED:		APVD KURT A. RANDOLPH 7/12/93	NAME PIN, 1.52 $[.060]$ DIA, MAG-MATE™																			
<table border="0"> <tr><td>0 PLC</td><td>±</td><td>-</td></tr> <tr><td>1 PLC</td><td>±</td><td>-</td></tr> <tr><td>2 PLC</td><td>±</td><td>0.25 $[.010]$</td></tr> <tr><td>3 PLC</td><td>±</td><td>-</td></tr> <tr><td>4 PLC</td><td>±</td><td>-</td></tr> <tr><td>ANGLES</td><td>±</td><td>1°</td></tr> </table>		0 PLC	±	-	1 PLC	±	-	2 PLC	±	0.25 $[.010]$	3 PLC	±	-	4 PLC	±	-	ANGLES	±	1°	PRODUCT SPEC 108-2012	SIZE A2	CAGE CODE 00779
0 PLC	±	-																				
1 PLC	±	-																				
2 PLC	±	0.25 $[.010]$																				
3 PLC	±	-																				
4 PLC	±	-																				
ANGLES	±	1°																				
MATERIAL BRASS	FINISH - 3	APPLICATION SPEC 114-2046	DRAWING NO C=63722	RESTRICTED TO -																		
CUSTOMER DRAWING			SCALE 6:1	SHEET 1 OF 1																		
			REV K1																			