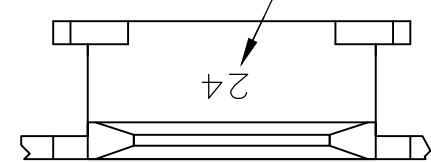


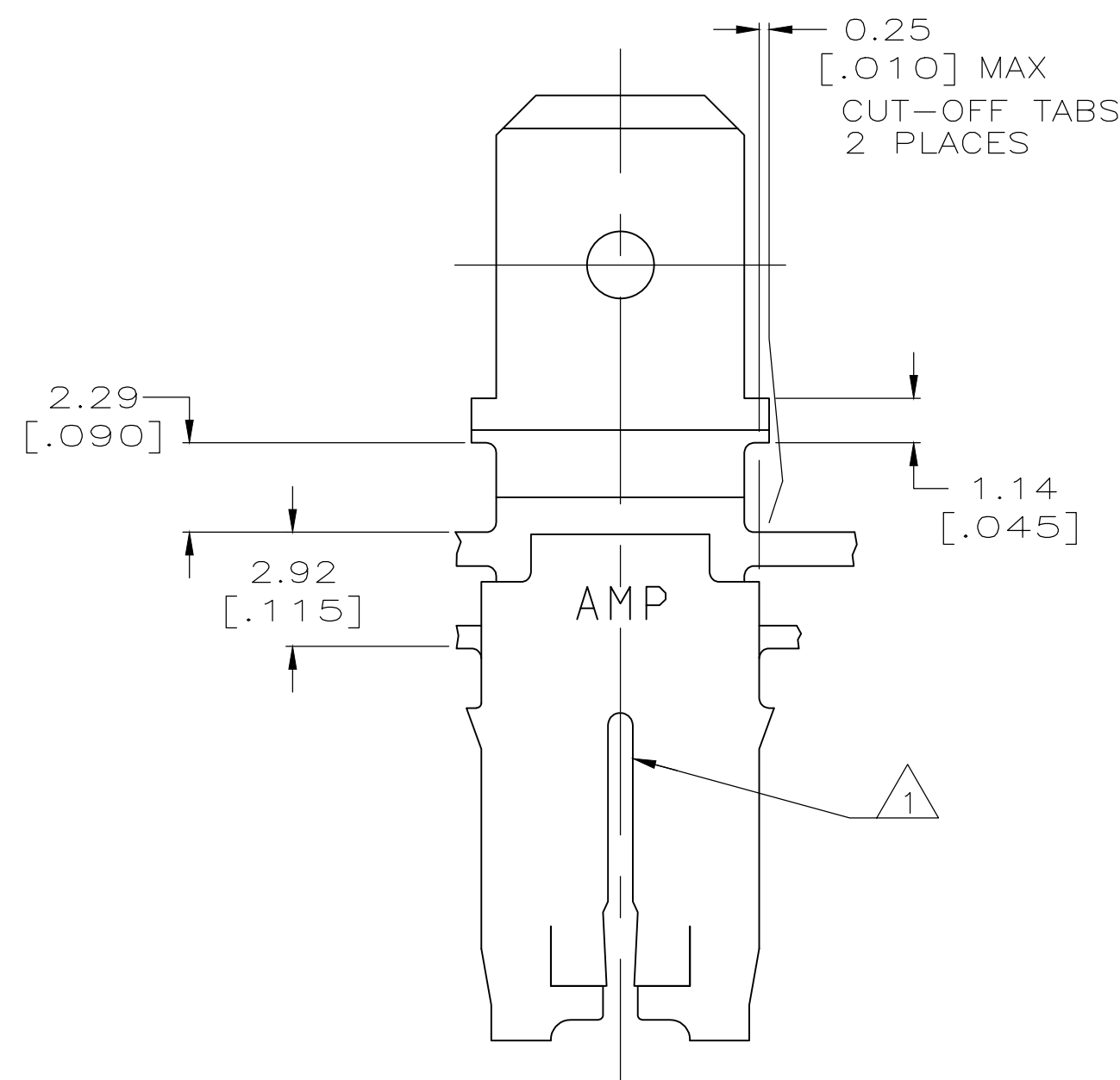
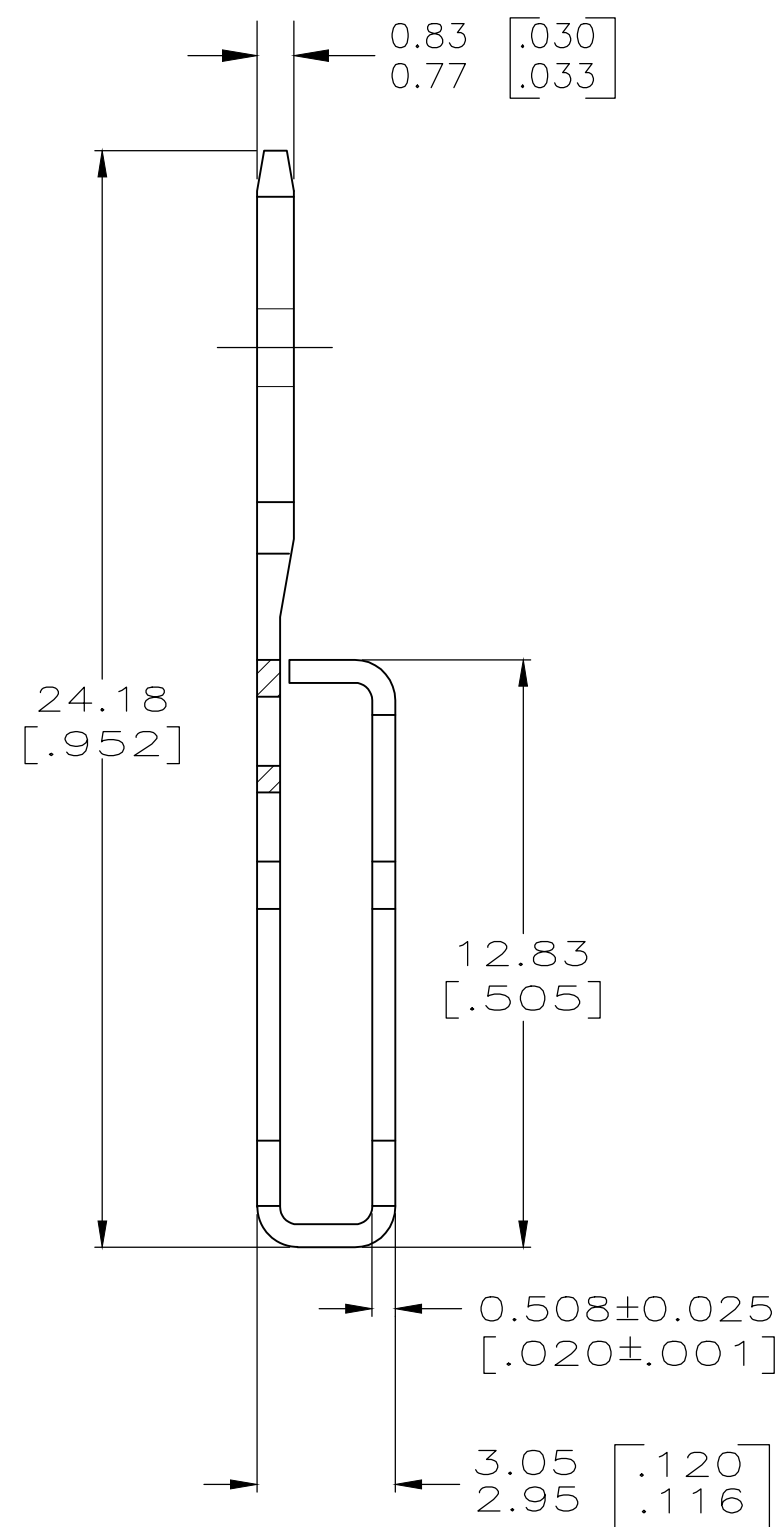
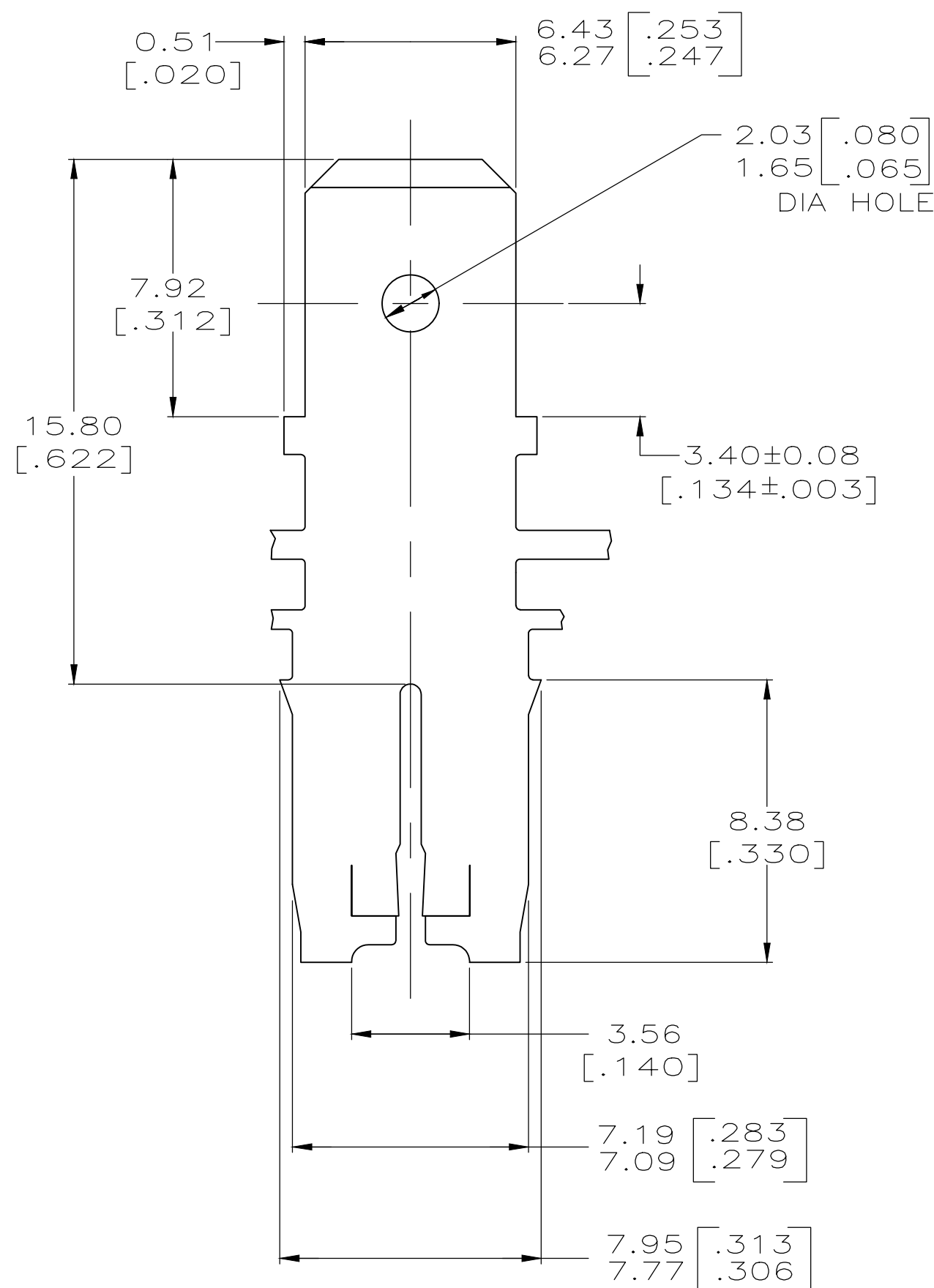
THIS DRAWING IS UNPUBLISHED. RELEASED FOR PUBLICATION
 © COPYRIGHT - By - ALL RIGHTS RESERVED.

LOC		DIST		REVISIONS			
P	LTR	DESCRIPTION		DATE	DWN	APVD	
AF	50	K2	REVISED PER ECR-19-013909	01OCT2019	PC	MB	

IDENTIFICATION NUMBER 24 FOR MAGNET WIRE RANGE



- 1 SLOT ACCEPTS 0.91-1.15mm [#19-#17] AWG COPPER MAGNET WIRE. 2 WIRES OF THE SAME SIZE MAX PER SLOT. ALUMINIUM RANGE 0.95-1.15mm [#18.5-#17] AWG, ALUMINIUM WIRE RANGE APPLIES FOR POST TIN PLATED PART NUMBERS ONLY.
- 2 AFTER INSERTION INTO PLASTIC HOLDER TAB PORTION MUST BE BENT OVER 45° TO 90° OR POTTED-IN TO PREVENT PULL-OUT WHEN MATING RECEPTACLE IS DISCONNECTED.
- 3 CONTINUOUS STRIP ON REELS WITH TERMINALS LOCATED ON 8.38±0.08 [.330±.003] CENTERS.
- 4 VARNISH RESIST OVER TIN PER MIL-T-10727



OBSOLETE	SPECIAL	4	63464-4
	STANDARD	4	63464-3
PART NUMBER			

THIS DRAWING IS A CONTROLLED DOCUMENT.		DWN	24/OCT/94	PHILLIP M. FORTNEY		TE Connectivity
DIMENSIONS: INCHES		CHK	25/OCT/94	MICHAEL S. FEHER		
TOLERANCES UNLESS OTHERWISE SPECIFIED:		APVD	25/OCT/94	NELSON E. NEFF		TAB, 6.35 [.250] FASTON™ MAG-MATE™
0 PLC ± -		PRODUCT SPEC		108-2053		
1 PLC ± -		APPLICATION SPEC		114-2066		SIZE
2 PLC ± 0.25 [.010]		MATERIAL		BRASS		CAGE CODE
3 PLC ± -		FINISH		SEE TABLE		DRAWING NO
4 PLC ± -		WEIGHT		-		RESTRICTED TO
ANGLES ± -		CUSTOMER DRAWING		SCALE		6:1
FINISH		SHEET		1 OF 1		REV
MATERIAL		WEIGHT		-		K2