

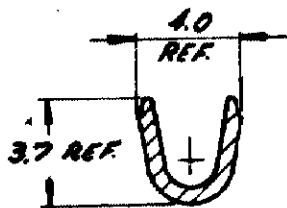
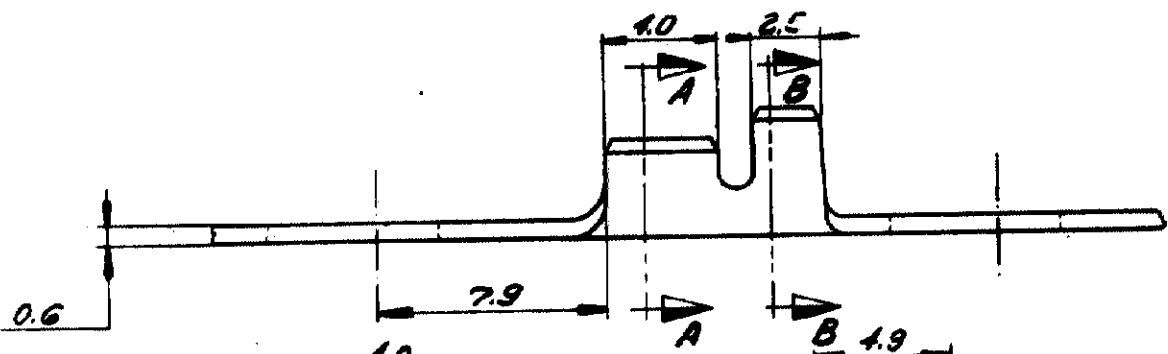
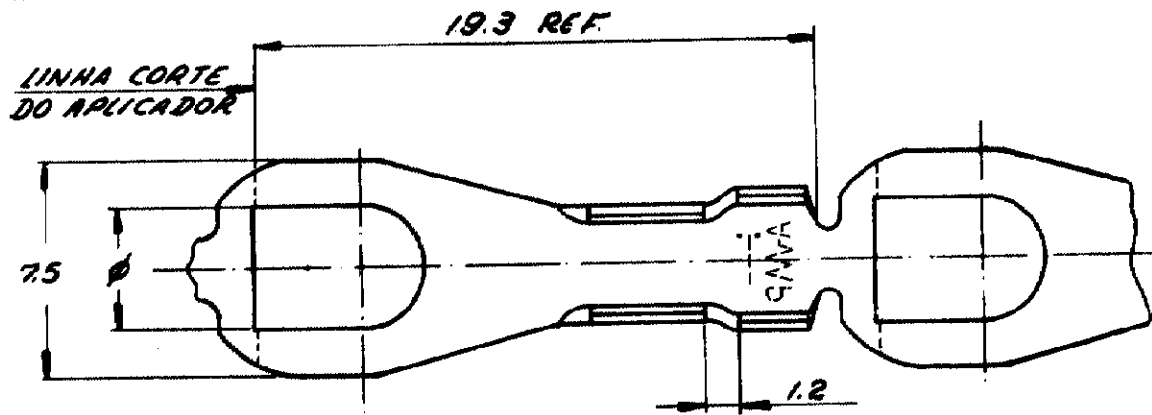
DRAWING MADE IN THIRD ANGLE PROJECTION

© Copyright 1978 by AMP DO BRASIL - S. P. All International Rights Reserved. AMP Incorporated products covered by U. S. and Foreign patents and/or patents pending.

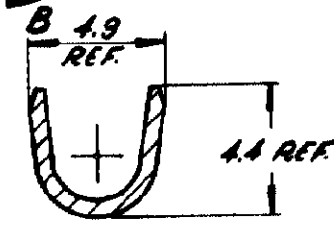
REVISIONS

LTR	DESCRIPTION	DATE	APPROVED
B1	REVISED PER ECO-09-026444	27NOV09	AEG

△ OBSOLETE PARTS: OBSOLETE CIS STREAMLINING PER D.RENAUD/D.SINISI



SECC. A-A



SECC. B-B

△ OBSOLETE	3,5	ESTANHADO	LATÃO	626411-2
	3,5	---	LATÃO	626411-1
	φ	ACABAMENTO	MATERIAL	PART NO

UNLESS OTHERWISE SPECIFIED DIMENSIONS ARE IN mm TOLERANCES ON: DECIMALS + ANGLES +	CONTRACT NO	TOLERANCE	AMP DO BRASIL S. Paulo - Brasil
	DR <i>P. Rossi 27-09-78</i>	± 0.4	
MATERIAL <i>VEJA TABELA</i>	CHK <i>Luiz 27.09.78</i>	NAME	
	APPU	SPADE TONGUE	
APPD			
FINISH <i>VEJA TABELA</i>	WIRE-RANGE <i>18-14 AWG</i>	SIZE A	LOC AP.
	INSUL-RANGE <i>φ 2.6 - 4.0 mm</i>	SCALF <i>4:1</i>	DRAWING NO 626411
		SHEET	REV B1