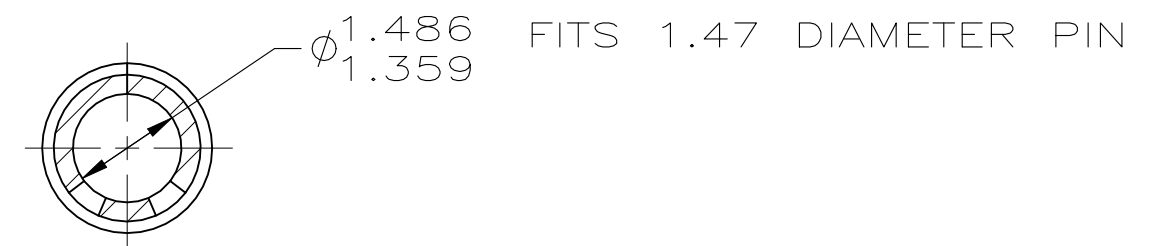
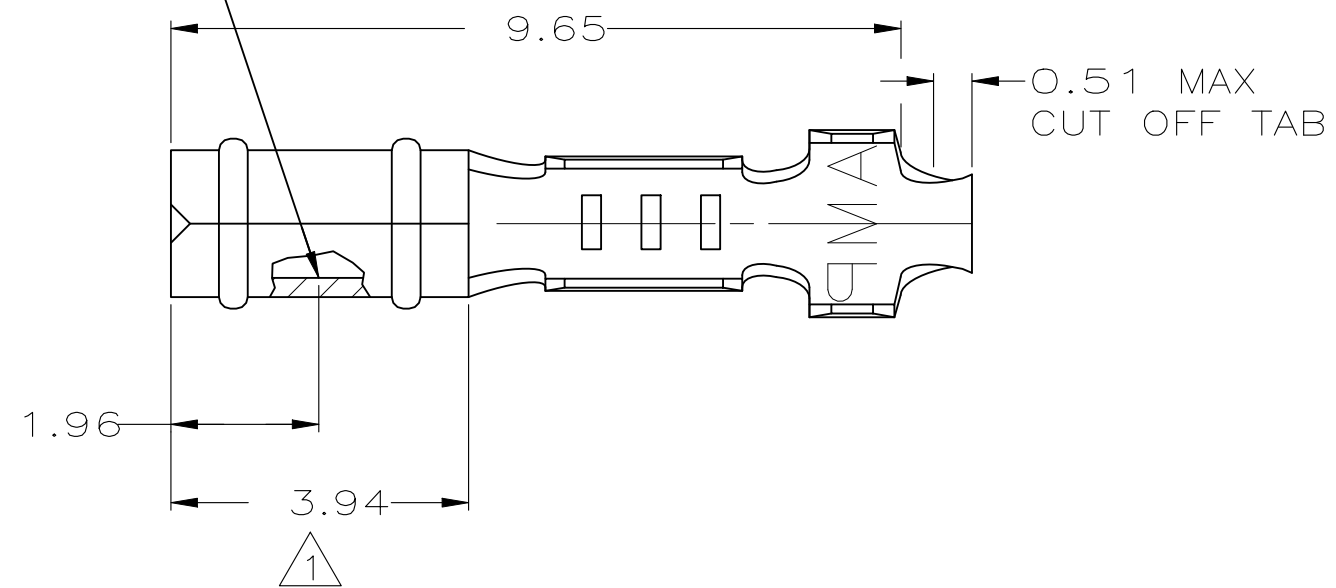


THIS DRAWING IS UNPUBLISHED. RELEASED FOR PUBLICATION
 © COPYRIGHT - By - ALL RIGHTS RESERVED.

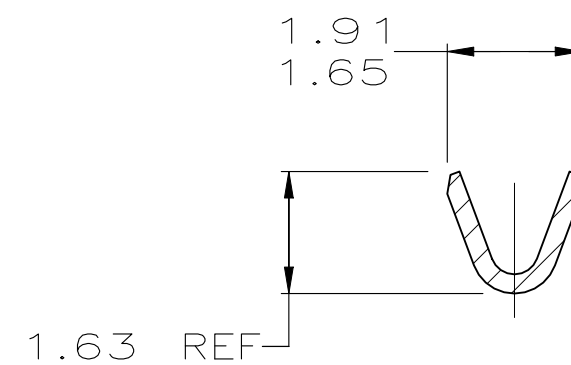
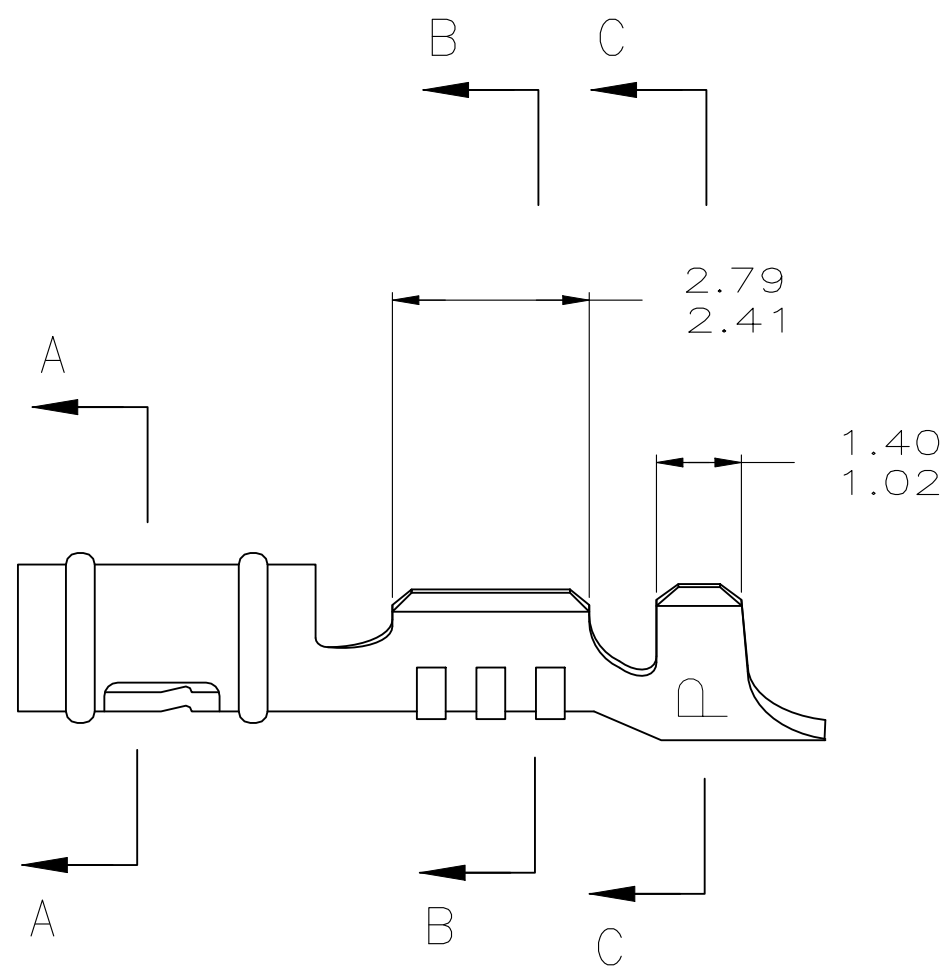
LOC	DIST	REVISIONS					
CM	52	P	LTR	DESCRIPTION	DATE	DWN	APVD
		Z2		REVISED PER ECR-23-180920	21-03-24	SK	JP

- 1. 0.00076 MIN SELECTIVE GOLD PLATING ON INSIDE OF RECEPTACLE OVER NICKEL OVER ALL UNDERPLATE.
- 2. WIRE RANGE: 0.12 - 0.4 MM² (26 - 22 AWG)
- 3. INSULATION RANGE: 0.89 - 1.65

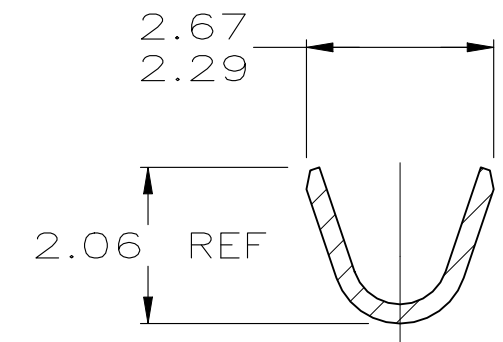
POINT OF MEASUREMENT
 90° FROM SEAM



SECTION A-A



SECTION B-B

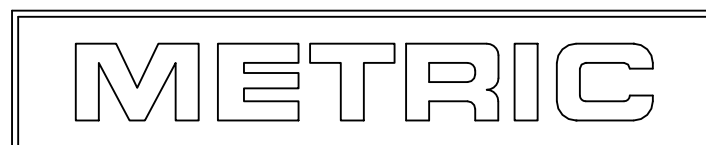


SECTION C-C

OBSOLETE	MATTE TIN	0.25 BE COPPER	-60983-4
SUPERSEDED BY 60983-1	△	0.25 BE COPPER	-60983-3
	PRE-TIN	0.25 PH BRZ	60983-2
	△	0.25 PH BRZ	60983-1
	FINISH	MATERIAL	PART NUMBER

1.02	.040	1.65	.065	2.67	.105	-	-
0.89	.035	1.63	.064	2.41	.095	-	-
0.51	.020	1.486	.0585	2.29	.090	-	-
0.25	.010	1.47	.058	2.06	.081	9.65	.380
0.13	.005	1.40	.055	1.96	.077	3.94	.155
0.00076	.000030	1.359	.0535	1.91	.075	2.79	.110
MM	IN	MM	IN	MM	IN	MM	IN

CONVERSION TABLE



THIS DRAWING IS A CONTROLLED DOCUMENT.		DWN	T. BECK	6-11-97	TE Connectivity		
DIMENSIONS: mm		CHK	R. SWING	6-11-97			
TOLERANCES UNLESS OTHERWISE SPECIFIED:		APVD	A. BEDDICK	6-17-97			
0 PLC ± - 1 PLC ± - 2 PLC ± 0.13 3 PLC ± - 4 PLC ± - ANGLES ± -		PRODUCT SPEC	108-1025				
MATERIAL SEE TABLE		APPLICATION SPEC	114-1008		SIZE	A2	
FINISH SEE TABLE		WEIGHT	-		CAGE CODE	00779	
		CUSTOMER DRAWING		SCALE	10:1	SHEET	1 of 1
				REV	72		