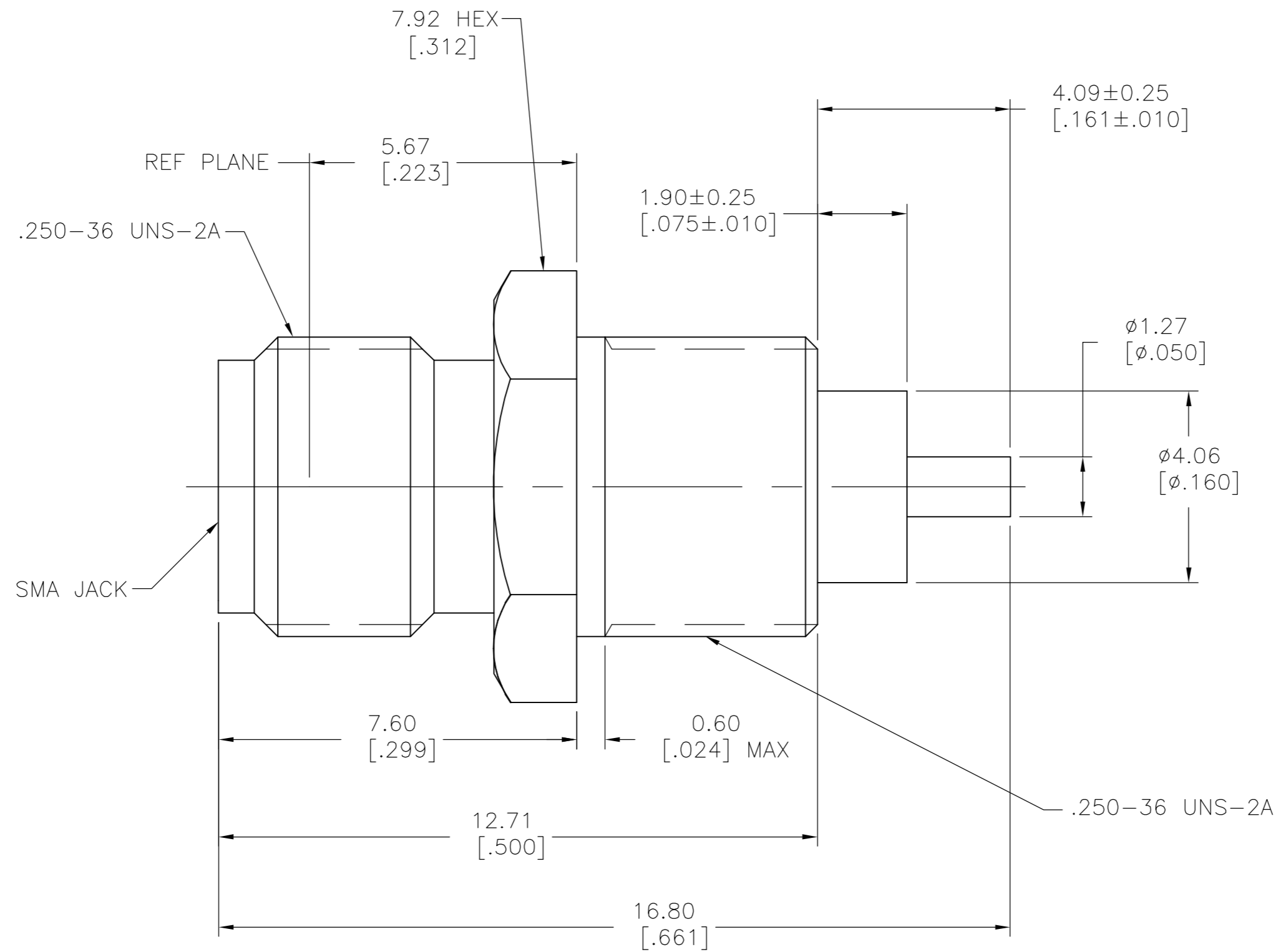


THIS DRAWING IS UNPUBLISHED. RELEASED FOR PUBLICATION
 © COPYRIGHT BY TYCO ELECTRONICS CORPORATION. ALL RIGHTS RESERVED.

LOC	DIST	REVISIONS					
AJ	16	P	LTR	DESCRIPTION	DATE	DWN	APVD
		A		REVISED PER EDC 0514-0150-05	10OCT2005	REH	KW



ELECTRICAL	MECHANICAL	ENVIRONMENTAL
Nominal Impedance (Ohms) 50	Interface Dimensions MIL-STD-348A, Fig. 310.2	TEMPERATURE RATING -65°C TO +165°C
Frequency Range (GHz) DC to 18.0	Recommended Mating Torque 0.60 Nm MAX.	Vibration MIL-STD-202, Method 204, Condition D
Volt Rating (VRMS MAX) @ Sea Level 335	Mating Characteristics: Insertion (MAX Kg) 1.36	Shock MIL-STD-202, Method 213, Condition I
VSWR N/A	Withdrawal (MIN g) 28.35	Thermal Shock MIL-STD-202, Method 107, Condition B,
Insertion Loss (dB MAX) N/A	Force to Engage and Disengage (Nm MAX) .226	Moisture Resistance MIL-STD-202, Method 106, Except Vibration Shall Be Omitted
RF Leakage (dB MIN) N/A	Center Contact Captivation Axial (Kg) 2.72	
Corona, 70,000 Ft (VRMS MIN) 250	Radial (In-Dz) N/A	
Dielectric Withstanding Voltage (VRMS MIN) @ Sea Level 1000	Cable Retention Axial Force (Lbs) N/A	
Contact Resistance (Milliohms MAX) Center Contact 3.0	Torque (In-Dz) N/A	
Outer Contact 2.0		
Cable to Housing N/A		
RF High Potential @ Sea Level (VRMS MIN @ 5 MHz) 670		
I.R.(Megohms MIN) 10,000		

COMPONENT	MATERIAL	FINISH
HOUSING	BRASS PER ASTM-B-16, HALF HARD	WHITE BRONZE PLATE
DIELECTRIC	TFE FLUOROCARBON PER ASTM-D-1457	N/A
CENTER CONTACT	BERYLLIUM COPPER PER ASTM-B-196 OR ASTM-B-197, ALLOY C17300, CONDITION H	GOLD PLATE PER MIL-G-45204

THIS DRAWING IS A CONTROLLED DOCUMENT.	
DIMENSIONS: mm [INCHES]	TOLERANCES UNLESS OTHERWISE SPECIFIED:
	0 PLC ± -
	1 PLC ± -
	2 PLC ± 0.13 [.005]
	3 PLC ± -
4 PLC ± -	ANGLES ± 1°
MATERIAL	FINISH
-	-

DWN B. MCMASTER 28APR05	 Tyco Electronics Corporation Harrisburg, PA 17105-3608
CHK J. HAVENER 28APR05	
APVD J. HAVENER 28APR05	
PRODUCT SPEC	
APPLICATION SPEC	NAME
WEIGHT -	SMA BULKHEAD FEEDTHRU FRONT MOUNT JACK RECEPTACLE STRAIGHT TERMINAL (2058-5564-36)
CUSTOMER DRAWING	SIZE A2 CAGE CODE 00779 DRAWING NO C=6087451 RESTRICTED TO -
SCALE 10:1	SHEET 1 of 1 REV A

6087451-1
PART NUMBER