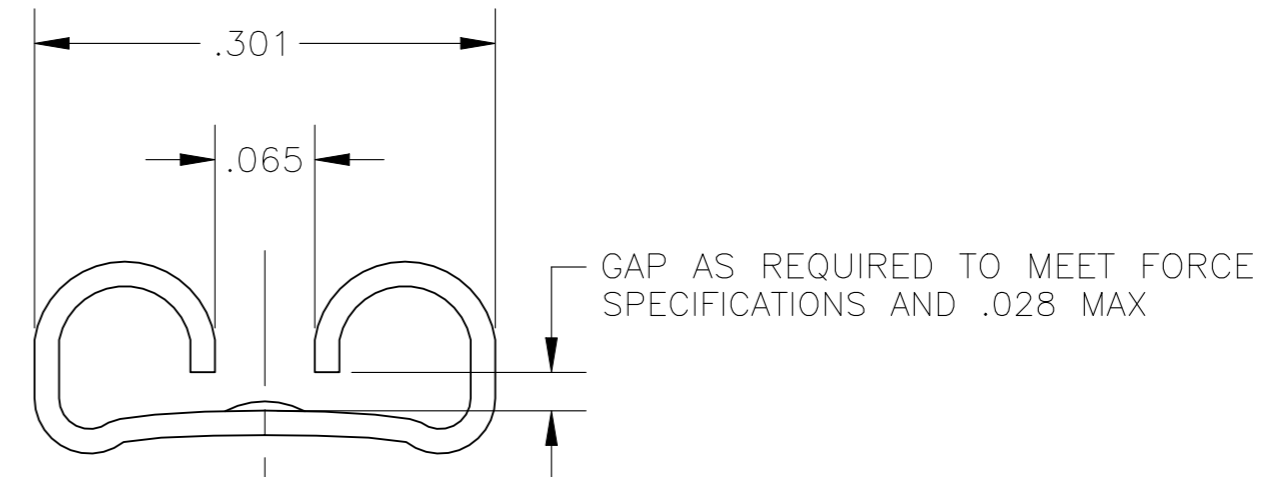
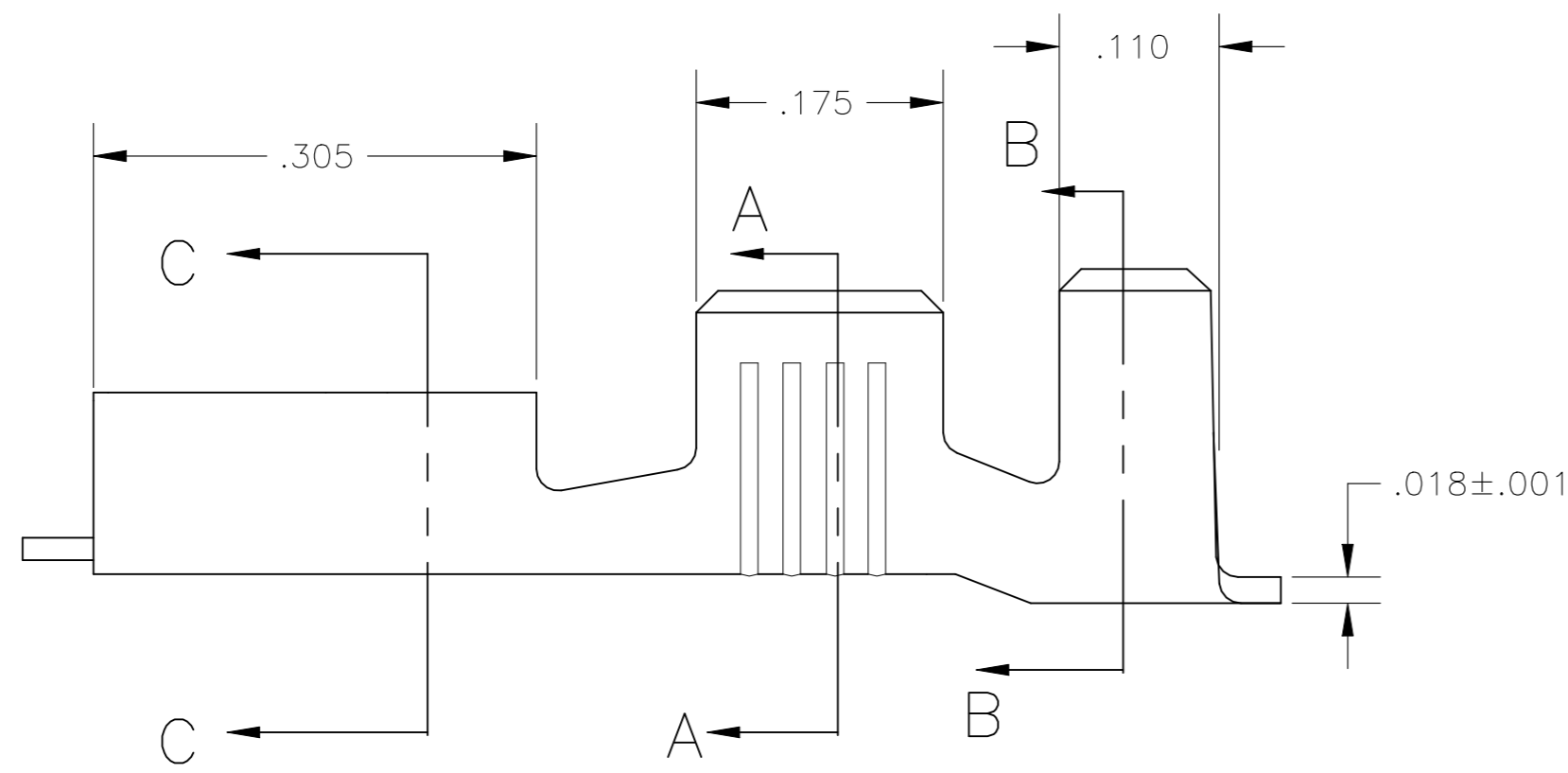
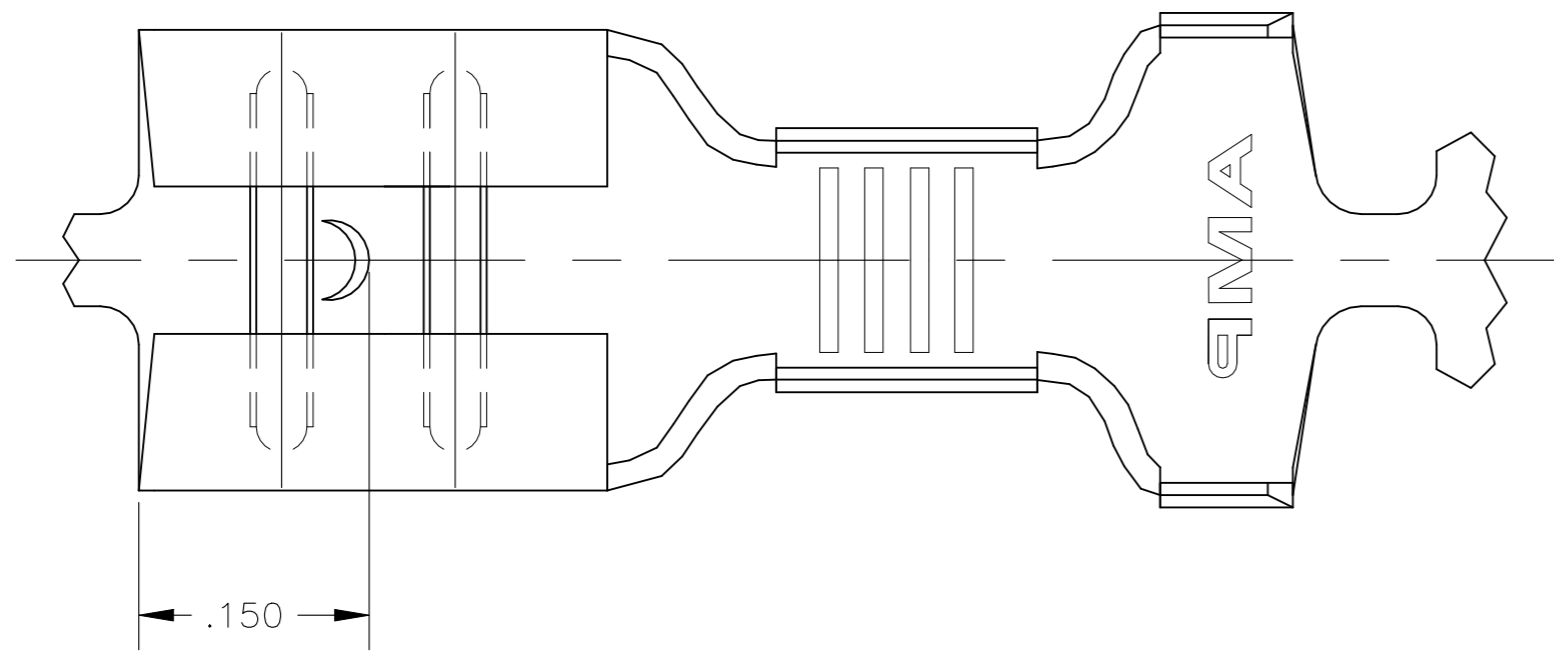
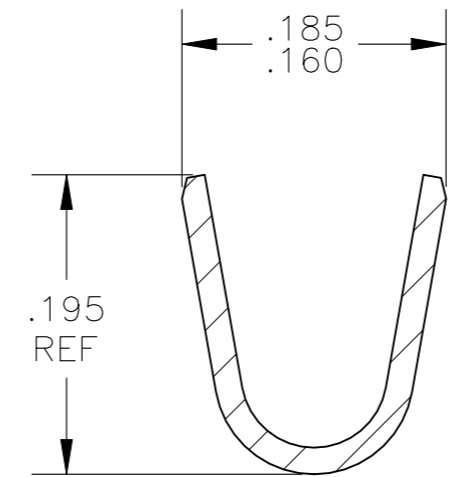


REVISIONS					
P	LTR	DESCRIPTION	DATE	DWN	APVD
K2		REVISED PER ECR-24-209015	08SEP2024	DB	ES

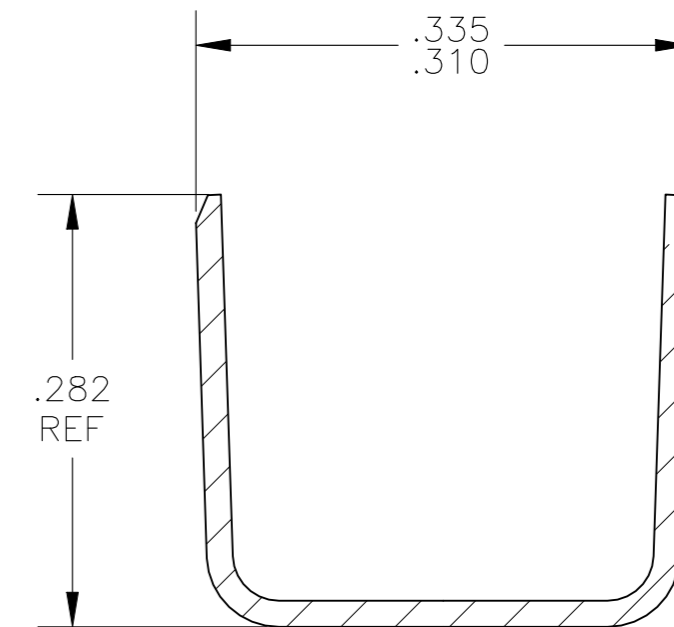
- 1 CONTINUOUS STRIP ON REELS
- 2 ACCEPTS #14#10 AWG OR TWO #14's WIRE SIZES, CRIMP WIDTH, .140, F TYPE
- 3 INSULATION RANGE IS .225-.275 DIA OR TWO AT .140 MAX. CRIMP WIDTH, .310, F TYPE
- 4 MATING TAB THK IS .033-.030



SECTION C-C



SECTION A-A



SECTION B-B

	-	60635-3
SUPERSEDED BY 63435-1	.000150 MIN SILVER	60635-2
	TIN	60635-1
	FINISH	PART NO

THIS DRAWING IS A CONTROLLED DOCUMENT.		DWN	JR_RUTH	27JUN02		RECEPTACLE, FASTON, .250 SERIES																	
DIMENSIONS: INCHES		CHK	P_DESANTIS	28JUN02		NAME																	
TOLERANCES UNLESS OTHERWISE SPECIFIED:		APVD	P_DESANTIS	28JUN02		PRODUCT SPEC																	
<table border="1"> <tr><td>0 PLC</td><td>±</td><td>-</td></tr> <tr><td>1 PLC</td><td>±</td><td>-</td></tr> <tr><td>2 PLC</td><td>±</td><td>-</td></tr> <tr><td>3 PLC</td><td>±</td><td>.010</td></tr> <tr><td>4 PLC</td><td>±</td><td>-</td></tr> <tr><td>ANGLES</td><td>±</td><td>-</td></tr> </table>		0 PLC	±	-		1 PLC	±	-	2 PLC	±	-	3 PLC	±	.010	4 PLC	±	-	ANGLES	±	-	APPLICATION SPEC		NAME
0 PLC	±	-																					
1 PLC	±	-																					
2 PLC	±	-																					
3 PLC	±	.010																					
4 PLC	±	-																					
ANGLES	±	-																					
MATERIAL	BRASS	FINISH	SEE TABLE	WEIGHT	0.000000	SIZE	A2	CAGE CODE	00779	DRAWING NO	C=60635	RESTRICTED TO	-										
CUSTOMER DRAWING						SCALE	8:1	SHEET	1 of 1	REV	K2												