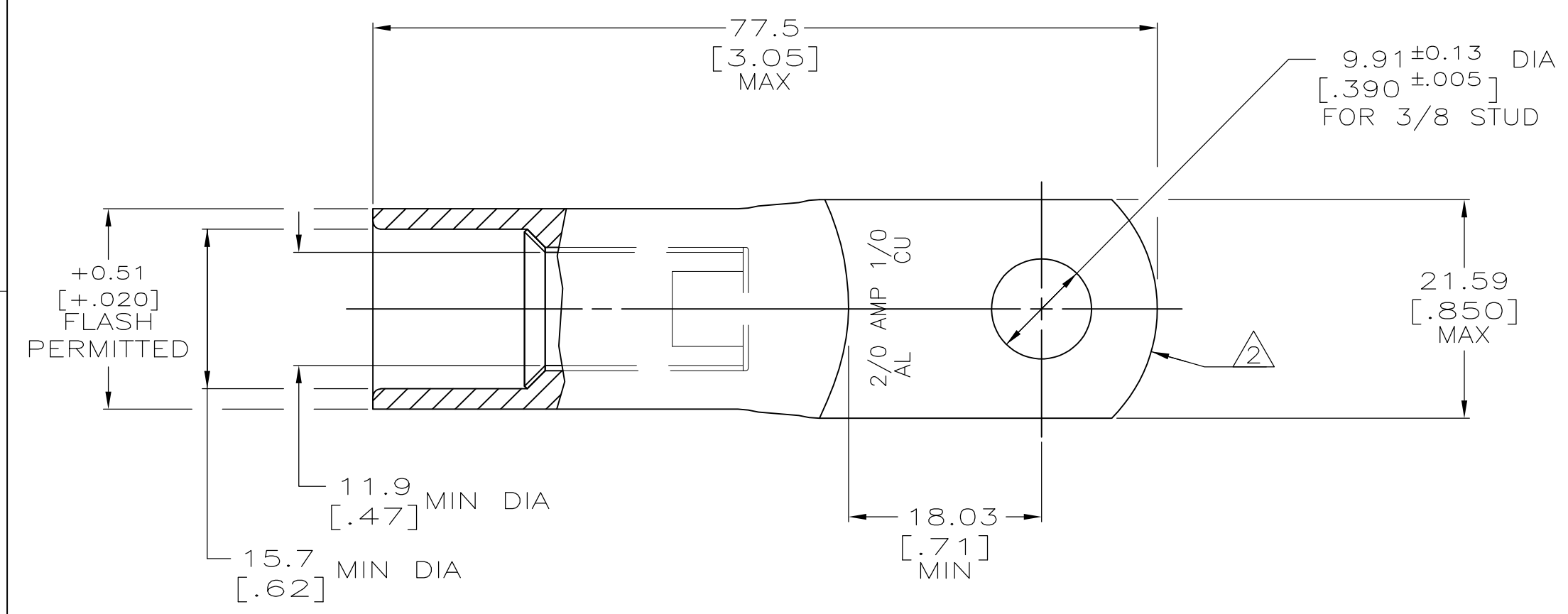
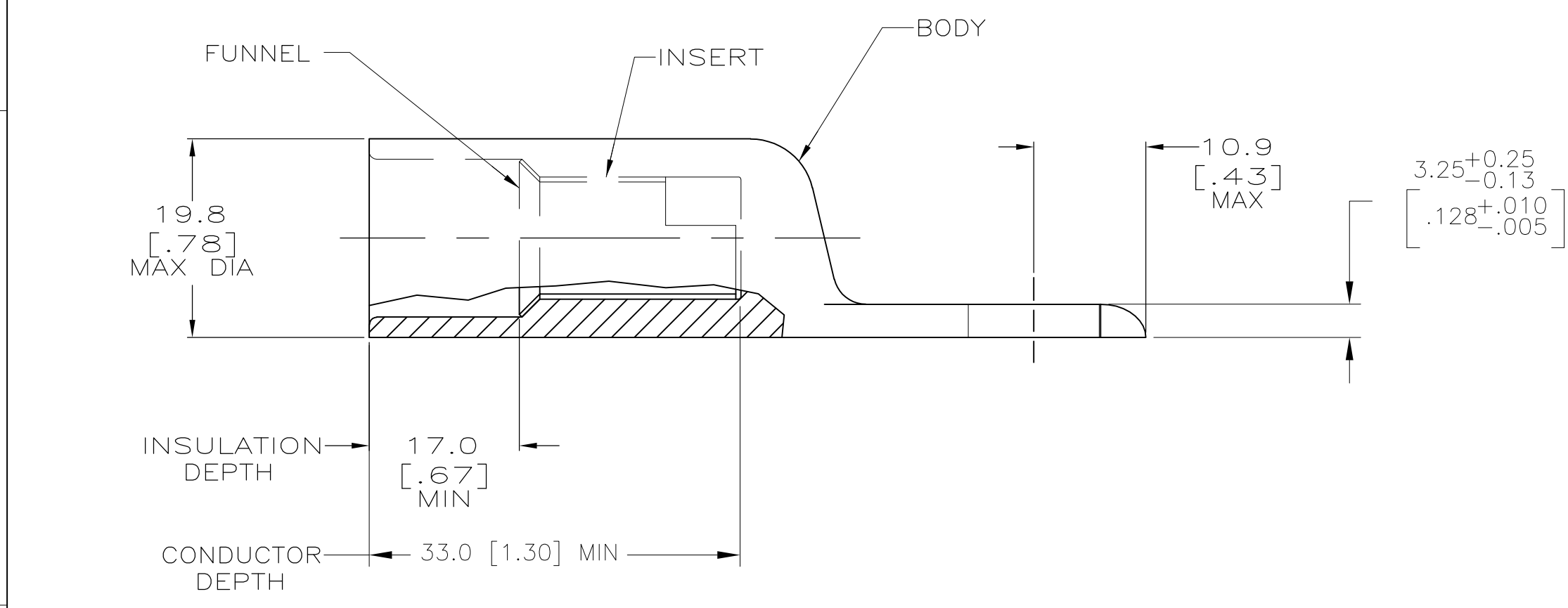


LOC		DIST		REVISIONS			MS		
P	LTR	DESCRIPTION			DATE	DWN	APVD		
C		REV PER ECO 13-016715			10-27-13	CT	JW		



1 WIRE INSULATION: 12.70[.500] - 13.97[.550] DIA
 2 THE TONGUE RADIUS FEATURE IS NOT A TOOLING CONTROLLED DIMENSION AND MAY NOT BE A TRUE RADIUS.



INSERT & FUNNEL: BRASS MIL-C-50 NICKEL PL PER QQ-N-290 0.00762[.000300] AVG THK	55944-1
BODY: COPPER ASTM-B187 ANNEALED TIN PL PER MIL-T-10727 0.00381[.000150] MIN THK	
MATERIAL & FINISH	PART NO.

THIS DRAWING IS A CONTROLLED DOCUMENT.		DWN DK SCHRUM 4/29/93	STE TE Connectivity
DIMENSIONS: mm [INCHES]		CHK WJ VOCKROTH 5/5/93	
TOLERANCES UNLESS OTHERWISE SPECIFIED:		APVD -	NAME
0 PLC ± -		PRODUCT SPEC	
1 PLC ± -		108-11011	
2 PLC ± -		APPLICATION SPEC	
3 PLC ± -		114-2134	
4 PLC ± -		SIZE CAGE CODE DRAWING NO	
ANGLES ± ± -		RESTRICTED TO	
MATERIAL SEE TABLE 15.0	FINISH SEE TABLE	WEIGHT 75.0 Grams	A2 00779 C-55944
CUSTOMER DRAWING		SCALE 2:1	SHEET 1 OF 1 REV C