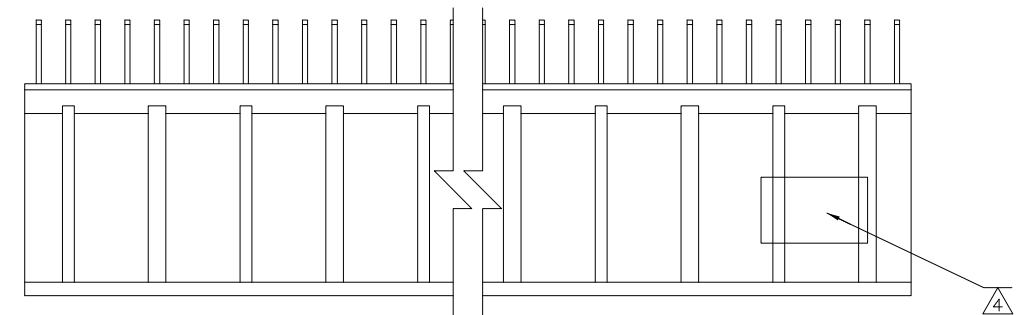
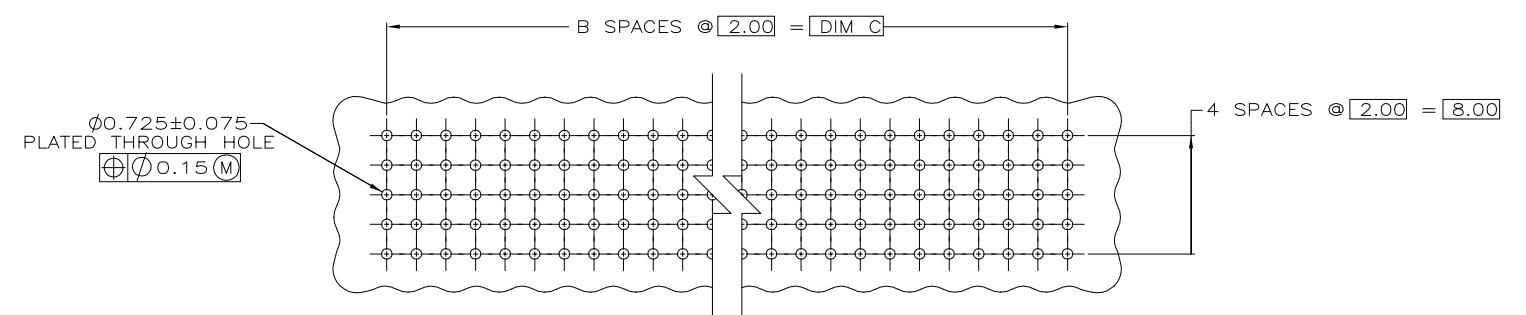
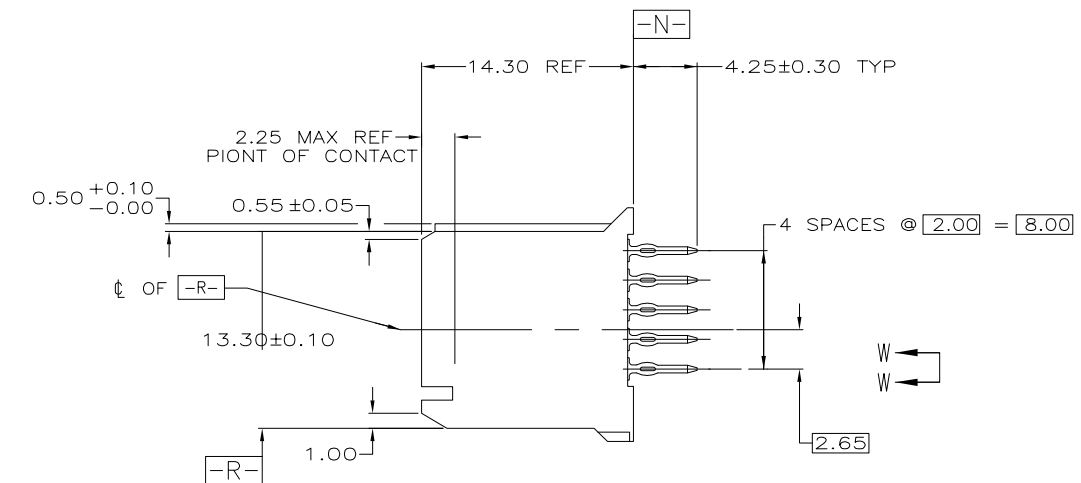
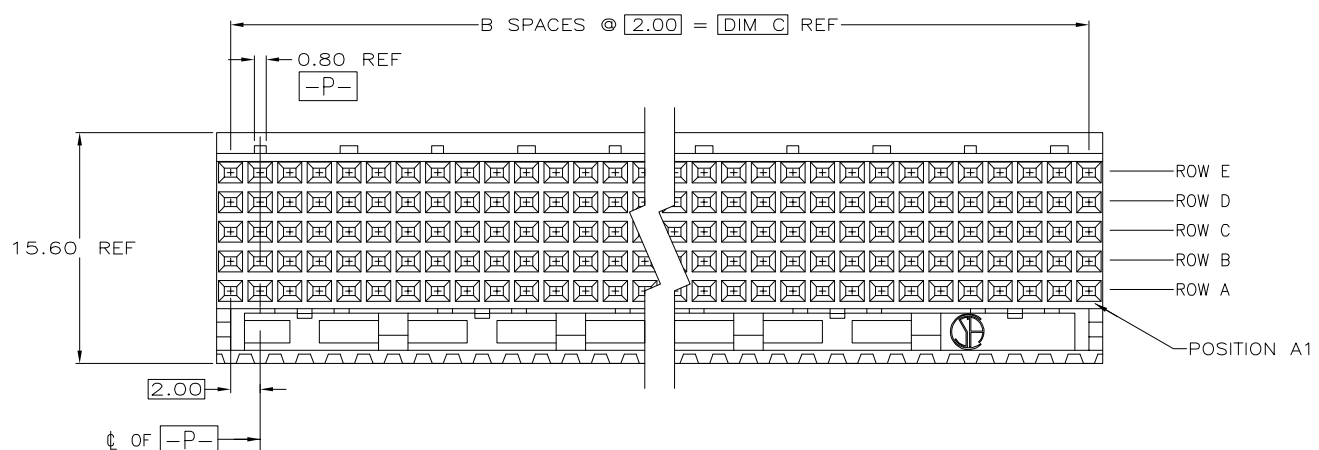


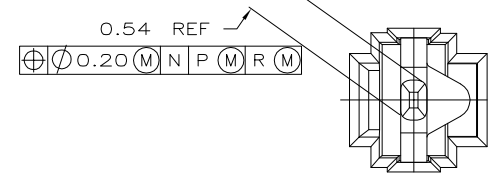
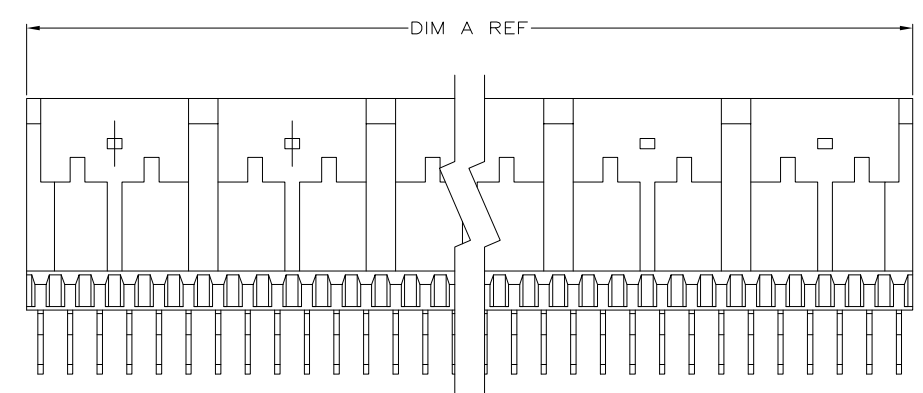
LOC	DIST	REVISIONS			
#	LTR	DESCRIPTION	DATE	DN	APPD
A1		REVISED PER ECO-09-024606	31OCT09	KK	AEG
B		REVISED PER ECO-15-014641	22OCT15	DS	FY



- △ HOUSING MATERIAL: LIQUID CRYSTAL POLYMER. COLOR: NATURAL
- △ CONTACT MATERIAL: PHOSPHOR-BRONZE
- △ CONTACT FINISH:(B)
 UNDERPLATE (ENTIRE CONTACT):
 0.00127 MIN NICKEL PER SAE-AMS-QQ-N-290
 ON MATING SURFACES:
 CONFORMS TO ALL TESTING SPECIFIED FOR TELCORDIA UNCONTROLLED ENVIRONMENT.
 ON LEADS:
 0.0006 MIN MATTE TIN PER ASTM B 545 OVER UNDERPLATE.
 LUBRICATION (MIN MATING SURFACES):
 SURFACE CONDITIONER AFTER PLATING.
- △ PART MARKING, LOCATED APPROXIMATELY AS SHOWN.
- △ OBSOLETE PARTS: OBSOLETE CIS STREAMLINING PER D.RENAUD/D.SINISI



RECOMMENDED CIRCUIT PATTERN (COMPONENT SIDE)



VIEW W-W
SCALE 20:1

△ OBSOLETE	94.00	47	95.88	240	-5223652-8
OBSOLETE	82.00	41	83.88	210	-5223652-7
△ OBSOLETE	70.00	35	71.88	180	-5223652-6
	58.00	29	59.88	150	-5223652-5
	46.00	23	47.88	120	5223652-4
△ OBSOLETE	34.00	17	35.88	90	-5223652-3
OBSOLETE	22.00	11	23.88	60	5223652-2
	10.00	5	11.88	30	5223652-1
	DIM C	B	DIM A	NUMBER OF SIGNAL POSITIONS	PART NUMBER

THIS DRAWING IS A CONTROLLED DOCUMENT.

DWG: B.MCMASTER 150ECD4	CHK: R.WERTZ 150ECD4	APPD: R.WERTZ 150ECD4	NAME: R.WERTZ
DIMENSIONS: mm		TOLERANCES UNLESS OTHERWISE SPECIFIED:	
0 PLC ± -	1 PLC ± -	2 PLC ± 0.13	3 PLC ± -
4 PLC ± -	ANGLES ± -	FINISH	
MATERIAL: 1	2	3	

STE TE Connectivity

ASSEMBLY, RECEPTACLE, SIGNAL, VERTICAL, 5 ROW, Z-PACK 2mm FB, WITH PRESS-FIT LEADS

SIZE: A1 CAGE CODE: 00779 DRAWING NO: C=5223652

RESTRICTED TO: CUSTOMER DRAWING SCALE: 4:1 SHEET 1 OF 1 REV B