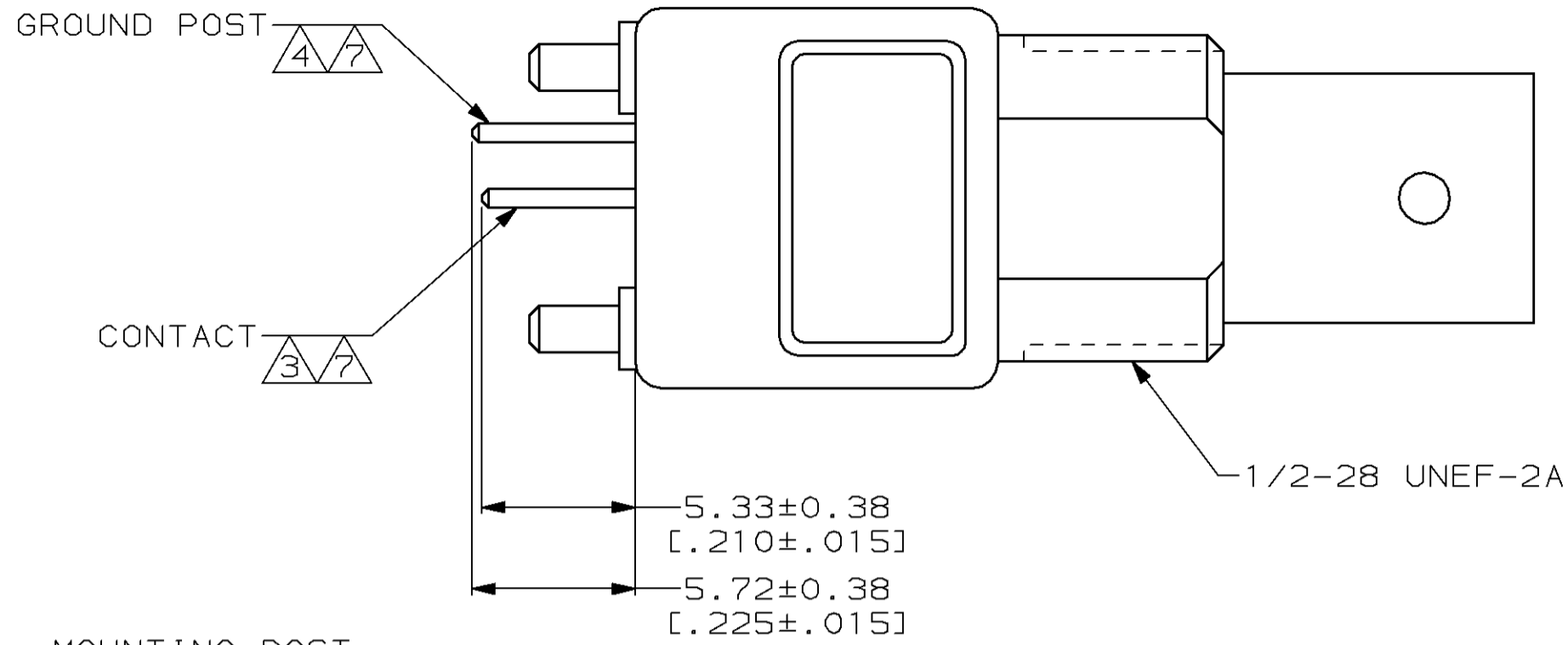
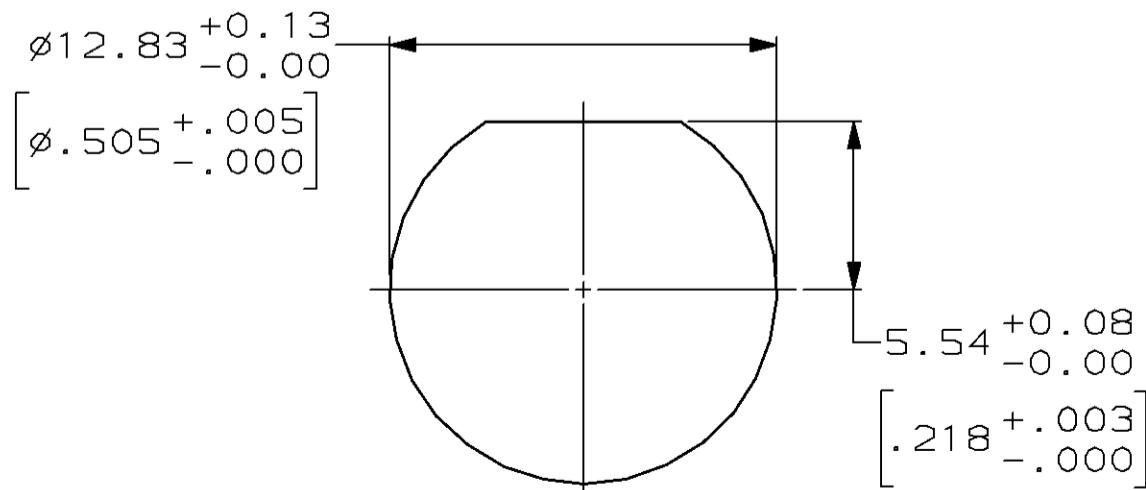
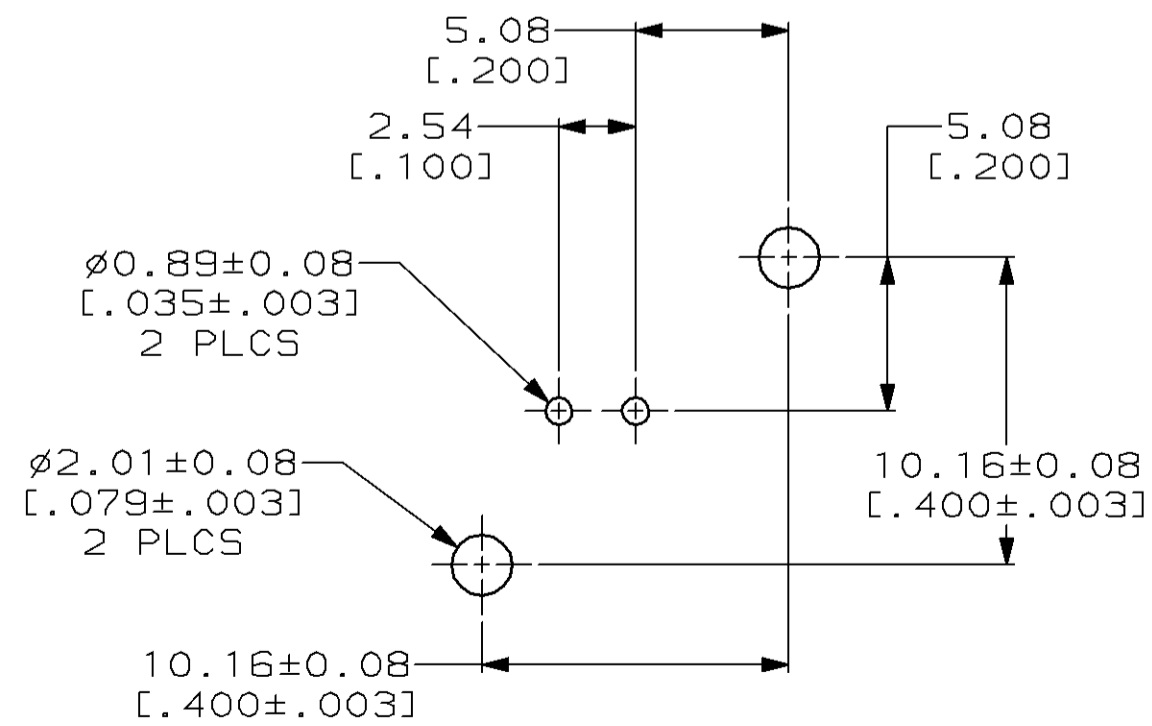
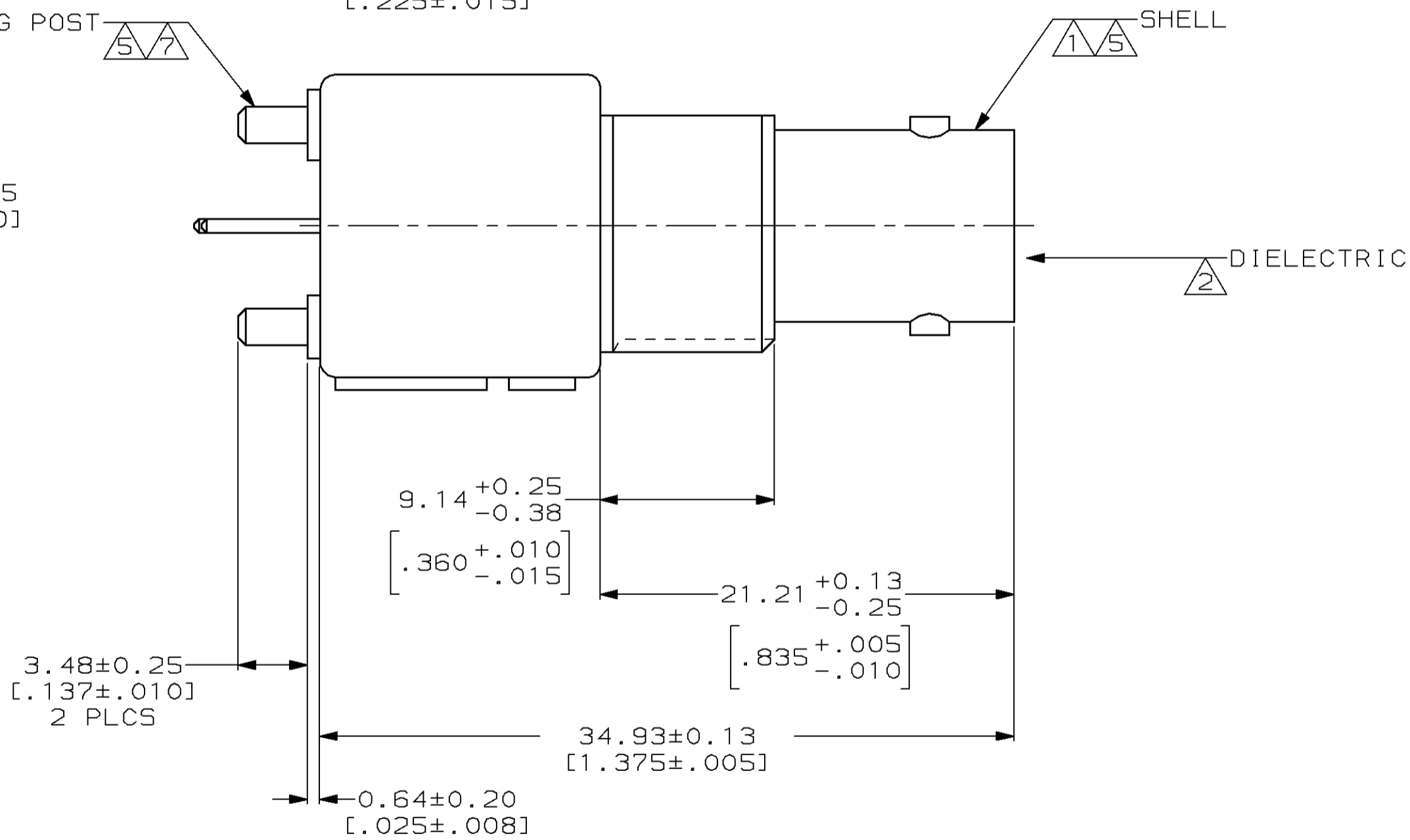
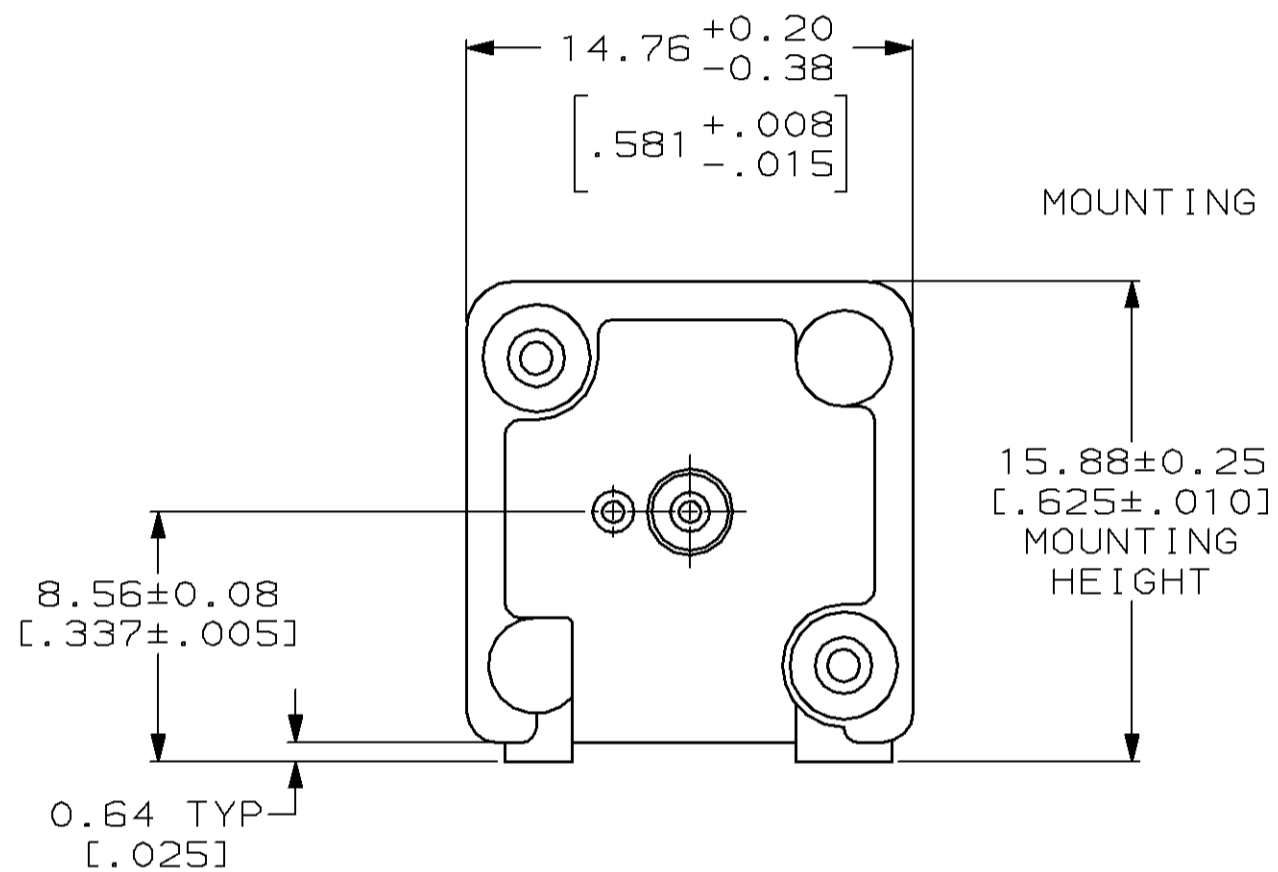


THIS DRAWING IS UNPUBLISHED. RELEASED FOR PUBLICATION
 © COPYRIGHT 19 BY AMP INCORPORATED. ALL RIGHTS RESERVED.

Loc		DIST		REVISIONS			
P	LTR	DESCRIPTION		DATE	DWN	APVD	
AJ	16	0	RLSE 415520-1 PER 96-3137-008-001	30JUL96	MC	MT	



- $\triangle 1$ ZINC DIE CAST PER QQ-Z-363
- $\triangle 2$ POLYMETHYLPENTENE PER ASTM-D-1238
- $\triangle 3$ PHOSPHOR BRONZE PER QQ-B-750
- $\triangle 4$ BRASS PER ASTM-B-453
- $\triangle 5$ BRASS PER ASTM-B-16
- $\triangle 6$ NICKEL PLATE PER QQ-N-290,
3.81µm [.000150] MIN THICKNESS
- $\triangle 7$ TIN-LEAD PLATE PER MIL-P-81728,
3.81µm [.000150] MIN THICKNESS
- 8. USE INSTRUCTION SHEET 2769



PCB CONFIGURATION

RECOMMENDED PANEL CUTOUT

415520-1
PART NUMBER

THIS DRAWING IS A CONTROLLED DOCUMENT.		DWN MICHAEL E. COWHER 30JUL96	AMP Incorporated Harrisburg, PA 17105-3608
DIMENSIONS: mm [INCHES]		CHK MICHAEL J. TOMCHAK 30JUL96	NAME MICHAEL J. TOMCHAK 30JUL96
TOLERANCES UNLESS OTHERWISE SPECIFIED:		APVD MICHAEL J. TOMCHAK 30JUL96	PRODUCT SPEC 108-12078
0 PLC ± 1 PLC ± 2 PLC ± 3 PLC ± 4 PLC ±		APVD MICHAEL J. TOMCHAK 30JUL96	APPLICATION SPEC -
MATERIAL SEE NOTES		FINISH SEE NOTES	WEIGHT -
ANGLES ±		SCALE A2	CAGE CODE 00779
CUSTOMER DRAWING		DRAWING NO C=415520	SIZE A2
SCALE 4:1		SHEET 1 OF 1	REV 0