



# WINTOTAL QUICK START GUIDE - WINTOTAL-7-DONGLE PICTOGRAM

THIS IS A CLASS 1 DOCUMENT WHICH IS NONCONFIDENTIAL.

*The information contained within this document is the property of TE Connectivity. It is supplied in confidence and the commercial security of the contents must be maintained. It must not be used for any purpose other than that for which it is supplied nor may any information contained in it be disclosed to unauthorised persons. It must not be reproduced in whole or in part without obtaining written permission from TE Connectivity (TE).*

*While TE has made every reasonable effort to ensure the accuracy of the information in this catalog, TE does not guarantee that it is error-free, nor does TE make any other representation, warranty or guarantee that the information is accurate, correct, reliable or current. TE reserves the right to make any adjustments to the information contained herein at any time without notice. TE expressly disclaims all implied warranties regarding the information contained herein, including, but not limited to, any implied warranties of merchantability or fitness for a particular purpose. The dimensions in this catalog are for reference purposes only and are subject to change without notice. Specifications are subject to change without notice. Consult TE for the latest dimensions and design specifications.*

\*Trademark. TE Connectivity, TE connectivity (logo), and TE (logo) are trademarks. Other logos, product and/or company names may be trademarks of their respective owners.



**Table of Contents**

**1. SCOPE ..... 3**  
    1.1. Related Parts: ..... 3

**2. WinTotal-7-Dongle Pictogram ..... 3**  
    2.1. Sequence:..... 4



## 1. SCOPE

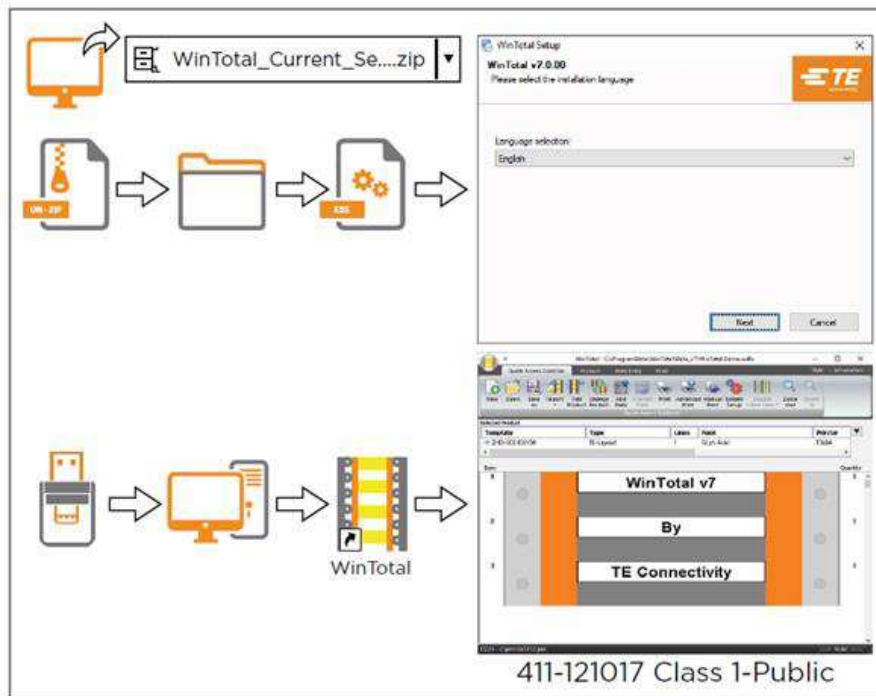
The aim of this document is to provide a descriptive comment for the install guide leaflet supplied in WinTotal v7<sup>1</sup> boxes.

### 1.1. Related Parts:

1-2186545-1 WinTotal-7-Dongle

## 2. WINTOTAL-7-DONGLE PICTOGRAM

[www.te.com/wintotal-download](http://www.te.com/wintotal-download)



To install, the user must have local Administrative rights.

Figure 1 – WinTotal-7-Dongle leaflet pictograph

<sup>1</sup> And all future versions.



2.1. Sequence:

[www.te.com/wintotal-download](http://www.te.com/wintotal-download)

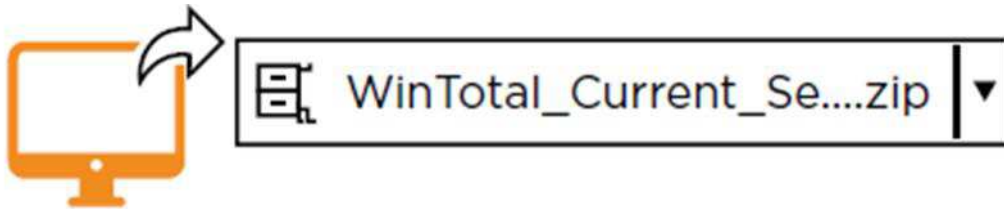


Figure 2 - Web address for download file

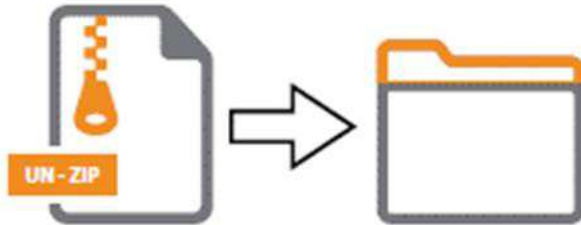


Figure 3 - Extract file to folder

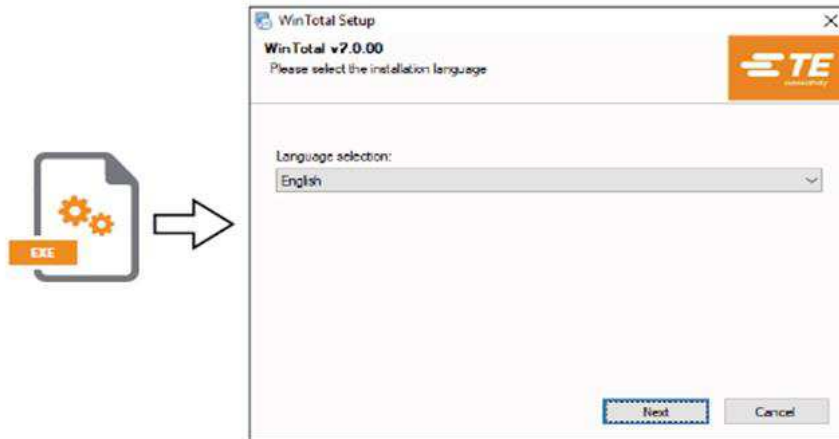


Figure 4 - Run executable and install software following on screen prompts

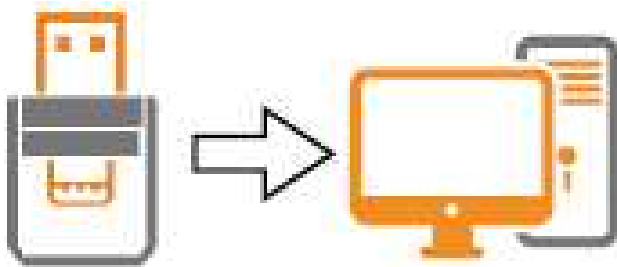


Figure 5 - Insert USB Dongle into PC

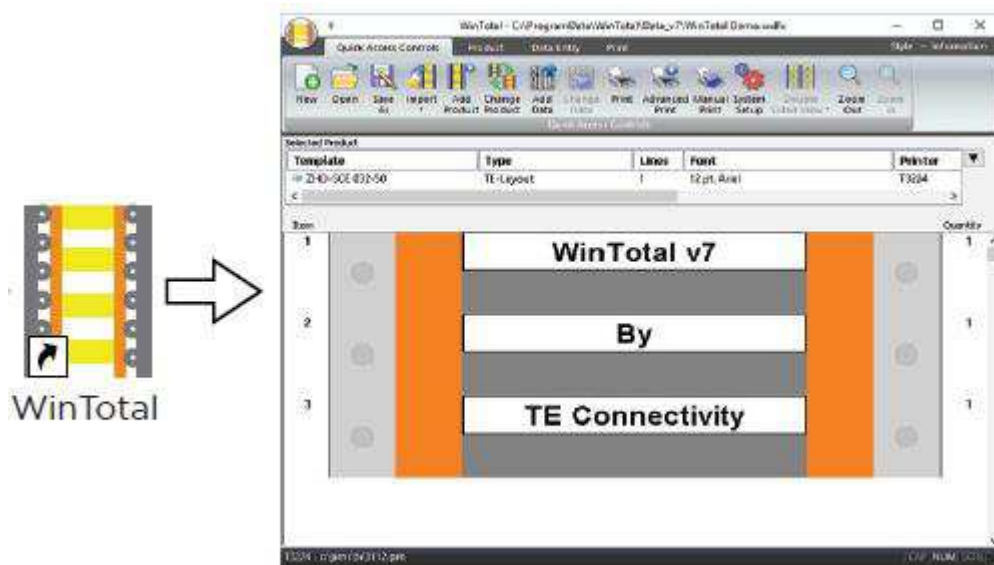


Figure 6 - Run software

To install, the user must have local Administrative rights.

Figure 7 - Import descriptive comment