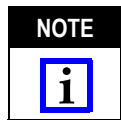


Figure 1

1. INTRODUCTION

This instruction sheet covers the assembly procedure for OSP Panel Feed-Through Jack Receptacle 1059654-1 shown in Figure 1.

Figure 2 gives the tool applicable for assembly of the jack receptacle.



*Dimensions in this instruction sheet are in metric units [with U.S. customary units in brackets].
Figures are not drawn to scale.*

Reasons for reissue of this instruction sheet are provided in Section 3, REVISION SUMMARY.

2. ASSEMBLY PROCEDURE

2.1. Mounting Hole Preparation (Figure 3)

1. Drill a pilot hole to the diameter given in Figure 3 through the panel.
2. Insert the step reamer into the pilot hole, and ream a hole to depth to the diameter given in Figure 3.
3. Plate per customer application. Recommended maximum total plating is 0.005 [.00019].
4. Clean in solvent.

2.2. Installation Into Panel (Figure 4)

1. Press the jack receptacle into the panel using the installation tool.
2. The jack receptacle should be bottomed in the panel as shown in Figure 4.

3. REVISION SUMMARY

Revisions to this instruction sheet include:

- Replaced company logo

TOOL PART NUMBER	TOOL DESCRIPTION
1055845-2	Installation Tool

Figure 2

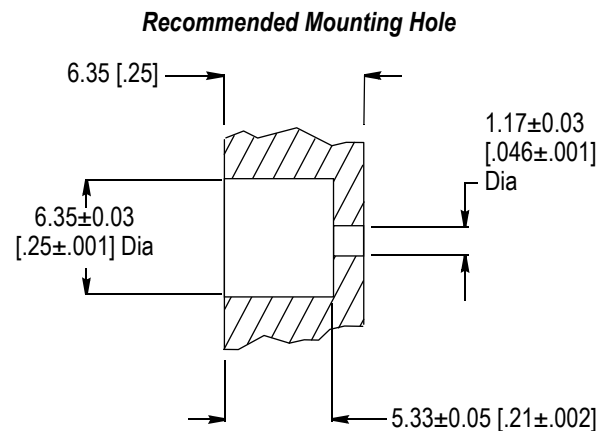


Figure 3

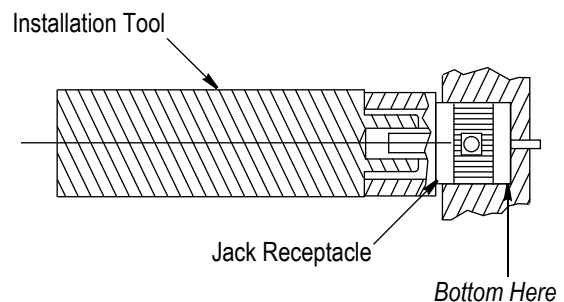


Figure 4