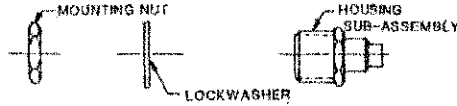


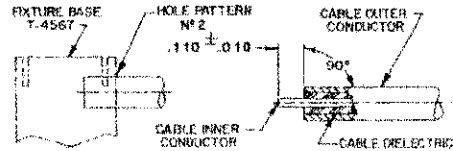
| CONNECTOR TYPE  | CABLE TYPE                            | TOOLS REQUIRED:  |
|---|---------------------------------------|--|
| OSP BULKHEAD FEEDTHROUGH CABLE JACK-REAR MOUNT DIRECT SOLDER ATTACHMENT | RQ408/U .085 SEMI-RIGID COAXIAL CABLE | FIXTURE BASE: 2098-5208-54 (T-4567)<br>CLAMP INSERT: 2098-5208-54 (T-4700-2)<br>LOCATOR TOOL: 4598-5004-02 |

## CONNECTOR

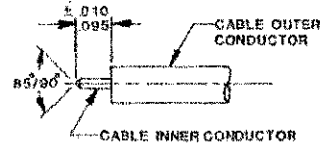


## ASSEMBLY OPERATIONS

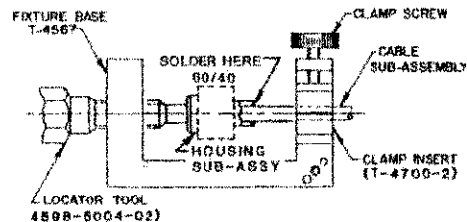
- 1.0 PREPARATION OF CABLE**
- 1.1 INSERT SQUARED CABLE END INTO FIXTURE BASE HOLE PATTERN #2.
  - 1.2 PLACE SAW IN SAW SLOT AND CUT THROUGH OUTER CONDUCTOR AND INTO DIELECTRIC WHILE ROTATING CABLE.
  - 1.3 REMOVE CABLE FROM FIXTURE AND FINISH CUTTING DIELECTRIC WITH CUTTING BLADE.
  - 1.4 BARE INNER CONDUCTOR BY PRYING CUT OUTER CONDUCTOR AND DIELECTRIC FROM CABLE.
  - 1.5 COMPLETE TRIMMING OF CABLE INNER CONDUCTOR TO DIMENSION SHOWN.



- 2.0 SHAPE INNER CONDUCTOR OF CABLE**
- 2.1 TRIM INNER CONDUCTOR TO LENGTH AS SHOWN.
  - 2.2 FILE BLUNT END OF INNER CONDUCTOR TO AN 85°-90° CONE.



- 3.0 SOLDERING OF CABLE TO HOUSING SUB-ASSEMBLY**
- 3.1 ASSEMBLE CABLE INTO HOUSING SUB-ASSEMBLY.
    - 3.1.1 CAREFULLY INSERT CABLE INNER CONDUCTOR INTO PRE-ASSEMBLED CENTER CONTACT OF HOUSING SUB-ASSEMBLY.
  - 3.2 PLACE LOOSE ASSEMBLY IN FIXTURE BASE AS SHOWN.
    - 3.2.1 TIGHTEN CLAMP SCREW TO SECURE CABLE.
    - 3.2.2 TIGHTEN LOCATOR TOOL TO SEAT HOUSING SUB-ASSEMBLY FIRMLY.
  - 3.3 MAINTAIN POSITION OF HOUSING SUB-ASSEMBLY FIRMLY AGAINST LOCATOR TOOL AND SOLDER.



NOTE: FIXTURE BASE SHOULD BE CLAMPED VERTICAL IN A VISE TO KEEP HOUSING SUB-ASSEMBLY SEATED AGAINST LOCATOR TOOL.