

FIGURE 1

1. INTRODUCTION

These instructions cover the use of AMP Series "G" Connectors and the selection of Accessories which are designed for them. Each Connector consists of a Plug Assembly and a Receptacle Assembly. Each Plug and each Receptacle, in turn, consists of a Shell, a Retainer with attaching hardware and either one, two or three Modules. See Figure 1. There are a number of different Modules available for these Connectors, each different Module accommodating a different

type of Contact. Be sure to select the Modules best suited for your application before assembling the Connector.

2. CONTACT SELECTION AND CRIMPING

Select the proper type of Contact for the kind of Modules you are using from the AMP Instruction Sheet packaged with the Modules. The Instruction Sheet packaged with the Modules will also reference the proper crimping information for the Contacts.

Copyright 1965, 1966, 1972 by AMP Incorporated, Harrisburg, Pa. All International Rights Reserved. AMP Incorporated products covered by U.S. and Foreign patents and/or patents pending.

3. SELECTING ACCESSORIES

There are several different Accessories available for Series "G" Connectors.

A. Locking Springs (Figure 2)

These items are used to lock mated Plugs and Receptacles together. They may be used on either 1-, 2- or 3-Module Connectors. To assemble the Locking Springs, refer to the AMP Instruction Sheet (IS 7187) packaged with them.

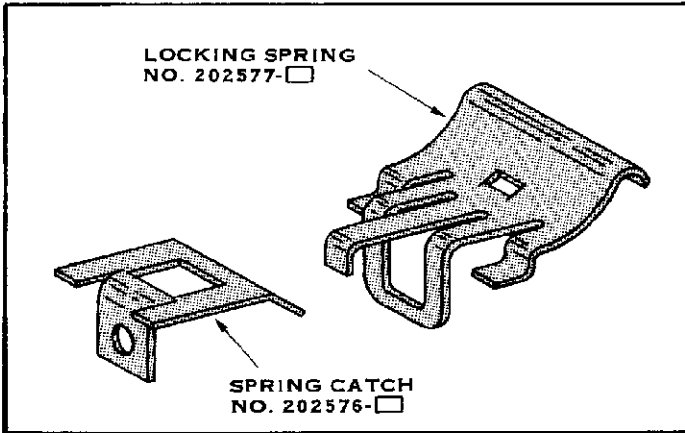


FIGURE 2

B. Locking Latches (Figure 3)

Like Locking Springs these Latches are used to hold mated Connectors together and may be used on G1, G2 and G3 sizes. They are mounted on one Connector Half and mate with another Half to which has been mounted a Shield and Cable Clamp. Refer to the AMP Instruction Sheet (IS 7268) packaged with the Locking Latches for the proper assembly procedure.

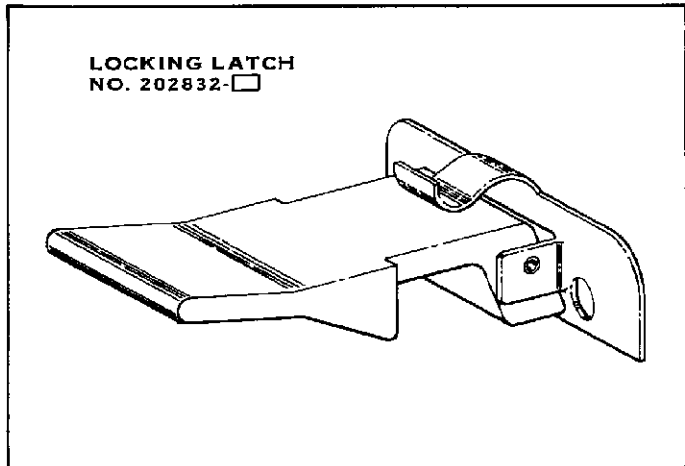


FIGURE 3

C. Strain Relief Clamps (Figure 4)

Strain Relief Clamps are used to relieve strain on Contacts caused by the weight of free hanging Wires. Select the proper Strain Relief Clamp for your application from Figure 4. The instructions (IS 7186 and IS 7263) packaged with the Strain Relief Clamps explain the assembly of these items.

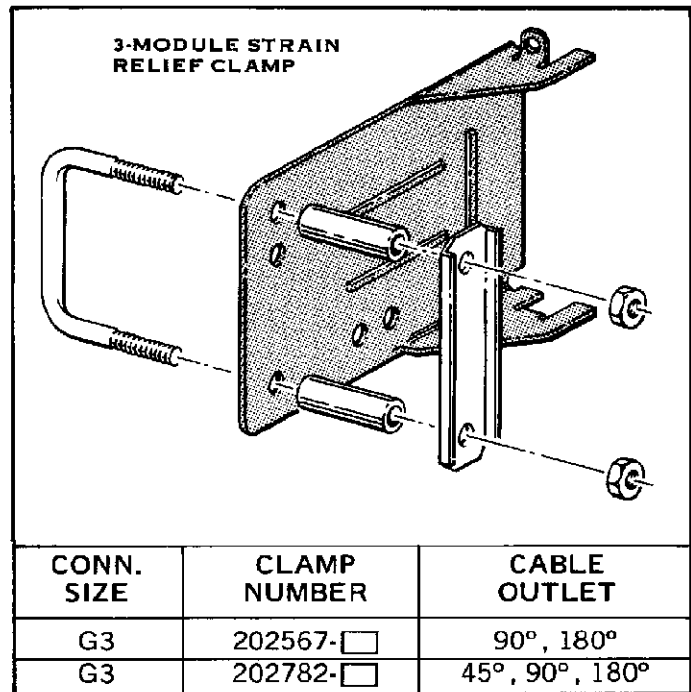
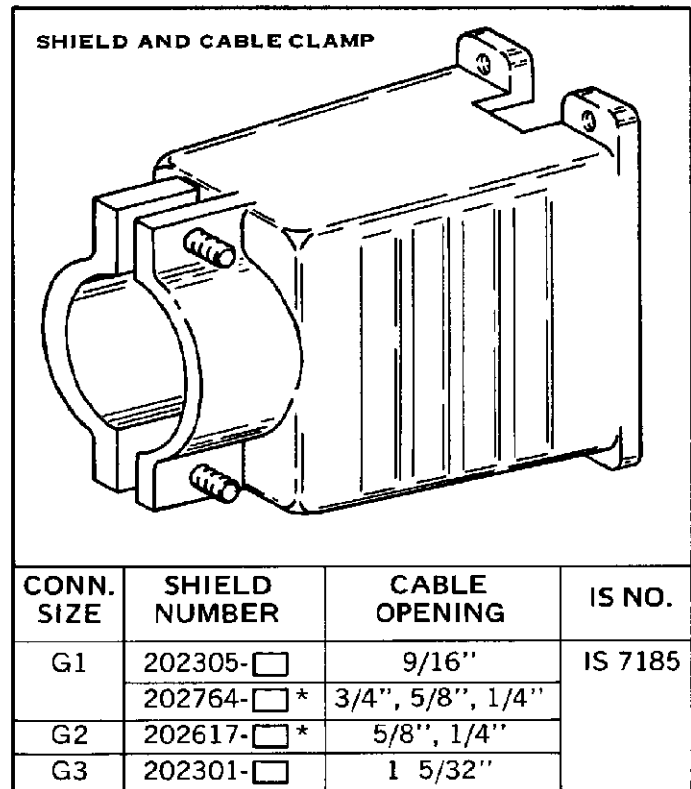


FIGURE 4

D. Shield and Cable Clamps (Figure 5)

Besides performing the function of a Strain Relief Clamp, Shields provide protection for the Wires where they protrude from the Plug or Receptacle. Figure 5 lists the Shields available for those Connectors and the instructions for assembling these items.



*GROMMET SUPPLIED WITH CLAMP

FIGURE 5

E. Mounting Springs (Figure 6)

Mounting Springs are used when mounting a series of Connectors to a Panel. They allow the panel-mounted Connector-Halves to float back from the Panel when being mated with a series of drawer-mounted Connector-Halves. This spring-loaded floating action compensates for variations in the distance between the Panel and each of the drawer-mounted Connector-Halves and it also applies sufficient force to assure full Connector engagement. To assemble the Mounting Springs, refer to the AMP Instruction Sheet (IS 7292) packaged with them.

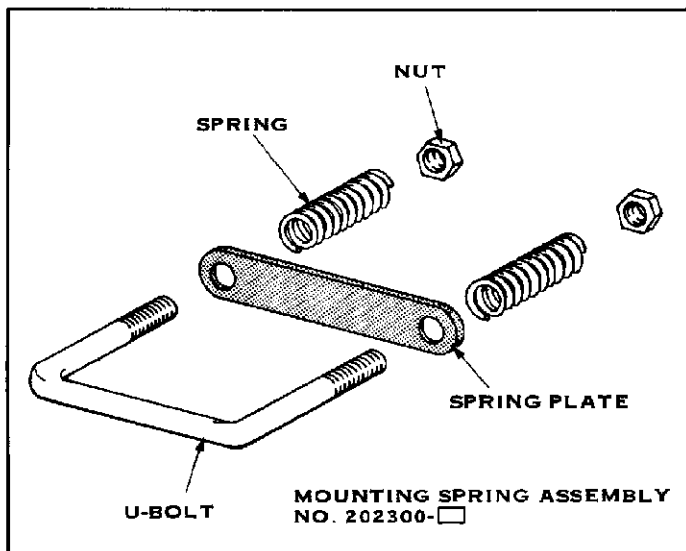


FIGURE 6

4. ASSEMBLING CONNECTOR

If accessories are used, read the instructions packaged with them before assembling the connector.

The Pin or Socket Modules can be inserted into either the Plug or Receptacle Shell. Notice that the Shoulder on the Pin Module is located at the mating end of the module. To determine the mating end of the Socket Module, orient it so that the Number Codes on the Mating Face are a mirror image of those on the Pin Module.

Insert the Modules into the Connector Shells as follows:

1. The Plug Shell has Polarizing Ribs and the Receptacle Shell has Polarizing Slots. Make certain these features will mate before inserting the Modules.
2. Insert the Mating Face of the Module(s) into the BACK of the Connector Shell(s) as indicated in Figure 7. Make sure the Mating Faces match.

WARNING These connectors are designed for High Voltage applications. If improperly mated, a serious or fatal shock could result. The only way to ensure proper mating is to make certain the NUMBER CODES on the Mating Faces of the Modules match each other. See Figure 7.

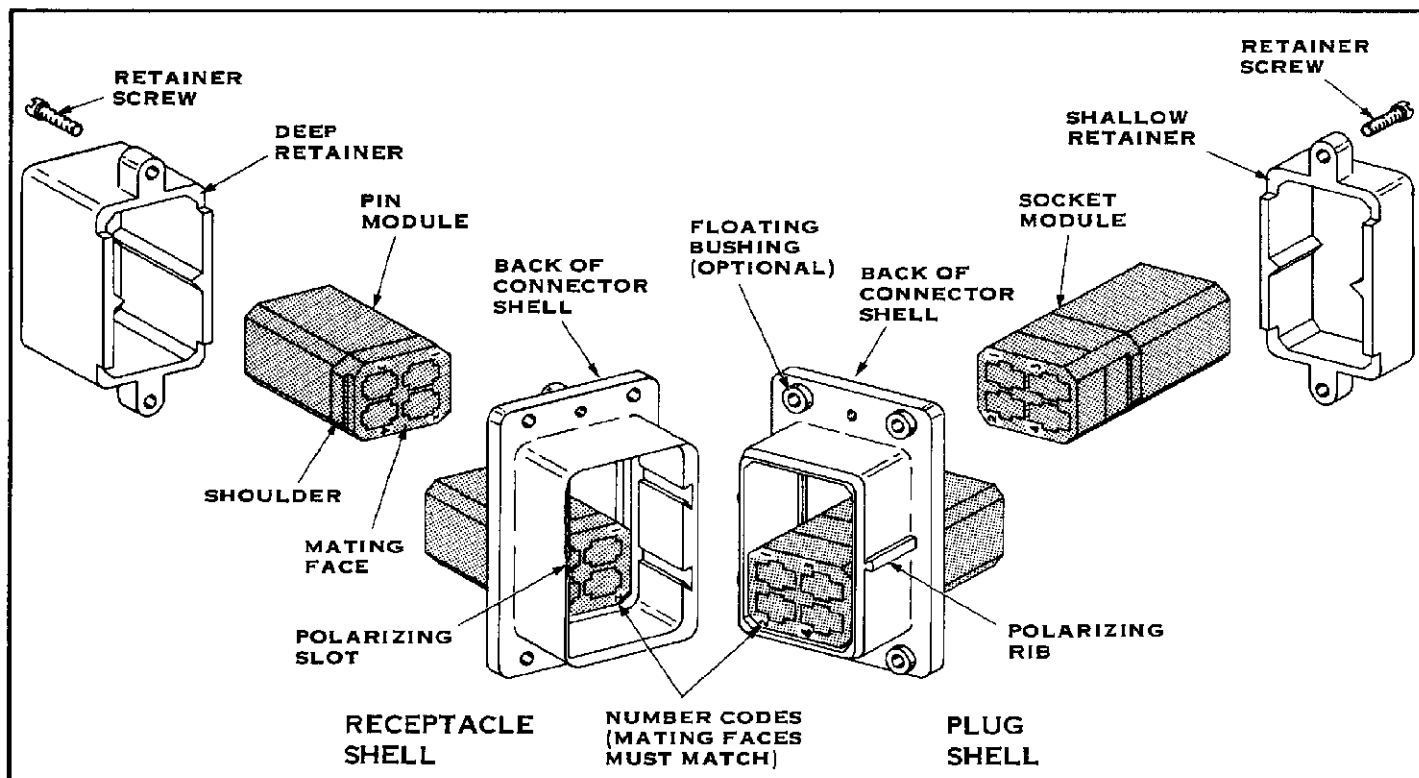


FIGURE 7

3. Slide the Retainers over the BACK of the Modules and secure them to the Shells with the Attaching Hardware packaged with the Connector Shells.

4. Insert the Contacts into the Modules according to the instructions packaged with the Modules.

5. PANEL MOUNTING

To mount Plug or Receptacle to Panel:

1. Make a cutout in Panel using the dimensions in Figure 8.

2. Attach Plug or Receptacle to Panel using Mounting Springs or No. 4-40 Machine Screws with Lockwashers and Nuts.

6. CONTACT EXTRACTION

To remove Contacts from Modules, refer to the AMP Instruction Sheet packaged with the Modules.

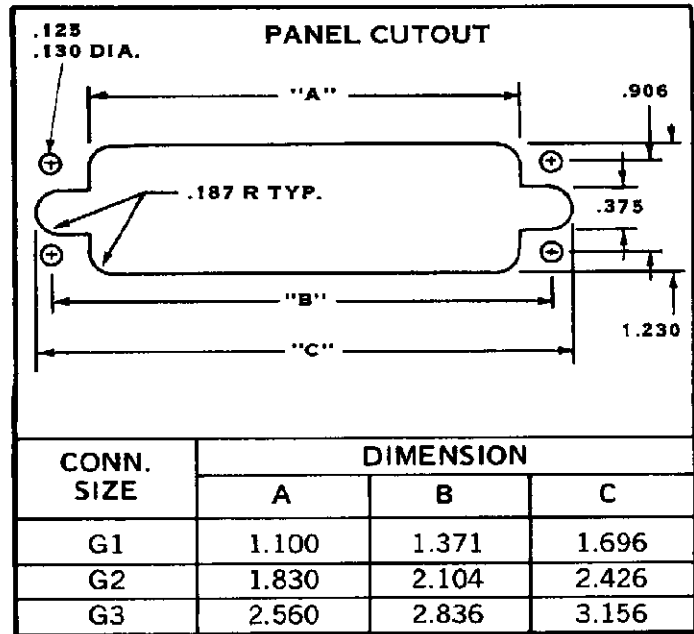


FIGURE 8