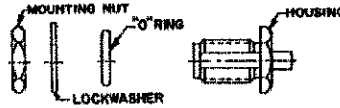


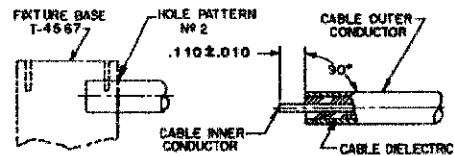
CONNECTOR TYPE	CABLE TYPE	TOOLS REQUIRED:
OSM BULKHEAD FEEDTHROUGH CABLE JACK DIRECT SOLDER ATTACHMENT	085 SEMI-RIGID COAXIAL CABLE	FIXTURE BASE: 2088-5208-54(T-4567) LOCATOR TOOL: 2088-5825-02(T-948) CLAMP INSERTS: 2088-5208-54(T-4700-2)

### CONNECTOR

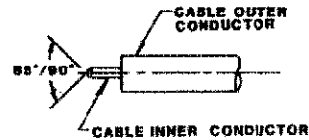


### ASSEMBLY OPERATIONS

- 1.0 PREPARATION OF CABLE**
- 1.1 INSERT SQUARED CABLE END INTO FIXTURE BASE HOLE PATTERN #2.
  - 1.2 PLACE SAW IN SAW SLOT AND CUT THROUGH OUTER CONDUCTOR AND INTO DIELECTRIC WHILE ROTATING CABLE.
  - 1.3 REMOVE CABLE FROM FIXTURE AND FINISH CUTTING DIELECTRIC WITH CUTTING BLADE.



- 2.0 SHAPE INNER CONDUCTOR OF CABLE**
- 2.1 TRIM INNER CONDUCTOR TO LENGTH AS SHOWN.
  - 2.2 FILE BLUNT END OF INNER CONDUCTOR TO AN 85°-90° CONE.



- 3.0 SOLDER CABLE TO HOUSING SUB-ASSEMBLY**
- 3.1 FIXTURE BASE SHOULD BE CLAMPED IN VISE VERTICALLY TO KEEP LOCATOR TOOL SEATED AGAINST FIXTURE BASE WALL.
  - 3.2 POSITION AND SECURE HOUSING SUB-ASSEMBLY IN LOCATOR TOOL.
  - 3.3 CAREFULLY INSERT INNER CONDUCTOR OF CABLE INTO PRE-ASSEMBLED CENTER CONTACT OF HOUSING SUB-ASSEMBLY.
  - 3.4 PLACE LOOSE ASSEMBLY IN FIXTURE BASE AS SHOWN.
  - 3.4.1 MAINTAIN SEATED POSITION OF CABLE FIRMLY AND TIGHTEN CLAMP SCREW TO SECURE CABLE.
  - 3.5 SOLDER WHERE SHOWN.

