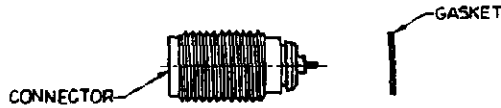


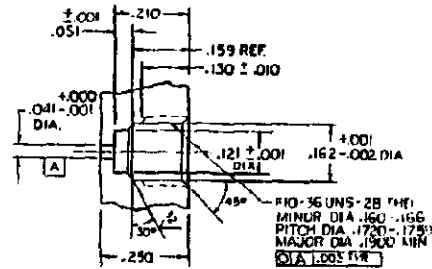
<p>CONNECTOR TYPE</p> <p>OSSM MIC PANEL FEED THROUGH HERMETIC JACK RECEPTACLE PORTABLE SEAL WITH GASKET</p>	<p>TOOLS REQUIRED:</p> <p>#10-36UNS-2B BOTTOMING TAP: (NOT SUPPLIED BY VENDOR) STEP REAMER: 2098-5561-54 TORQUE TOOL: 1098-3200-54</p>
--	---

CONNECTOR

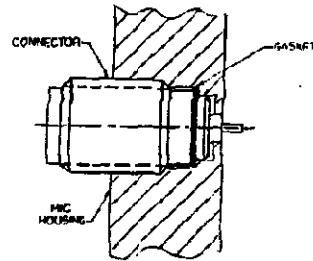


ASSEMBLY OPERATIONS

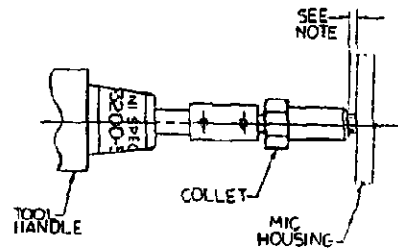
- 1.0 INSTALLATION OF CONNECTOR**
- 1.1.0 MOUNTING HOLE PREPARATION**
- 1.1.1 DRILL $.041 \pm .000$ DIA. HOLE THROUGH PANEL.
- 1.1.2 INSERT STEP REAMER INTO PILOT HOLE AND REAM TO DEPTH SHOWN.
- 1.1.3 TAP #10-36UNS THREAD TO DEPTH SHOWN.



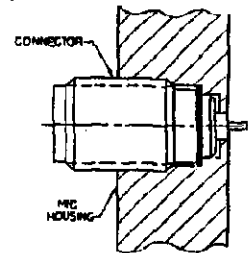
- 1.2.0 INSTALLATION OF JACK RECEPTACLE**
- 1.2.1 ASSEMBLE GASKET ONTO CONNECTOR.
- 1.2.2 SCREW CONNECTOR INTO MIC HOUSING AND FINGER TIGHTEN.



- 1.3.0 PRECISION TIGHTENING OF CONNECTOR**
- 1.3.1 SCREW COLLET ONTO CONNECTOR UNTIL COLLET STOPS ROTATING FREELY. (KEEP TOOL HANDLE STATIONARY RELATIVE TO MIC HOUSING).
- 1.3.2 TURN HANDLE OF TOOL CLOCKWISE UNTIL IT CLICKS. (KEEP COLLET STATIONARY RELATIVE TO MIC HOUSING USING A 5/8 WRENCH).
- 1.3.3 RELEASE COLLET AND TURN TOOL HANDLE CLOCKWISE UNTIL HANDLE CLICKS. (TORQUE IS ADJUSTED TO 14-15 IN.-LBS.)
- NOTE: COLLET SHOULD NOT CONTACT MIC HOUSING.



- 1.4.0 REMOVAL OF TOOL FROM CONNECTOR**
- 1.4.1 USE 5/8 WRENCH ON HEX OF COLLET TO KEEP IT FROM ROTATING.
- 1.4.2 TURN TOOL HANDLE COUNTER-CLOCKWISE TO BREAK JAM BETWEEN TOOL HANDLE AND COLLET. ALTERNATE BETWEEN TOOL HANDLE AND COLLET WHILE UNSCREWING UNTIL TOOL RELEASES FROM CONNECTOR. THE CONNECTOR IS NOW PROPERLY INSTALLED.

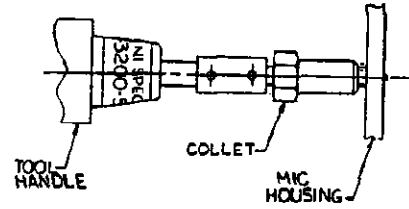


2.0 REMOVAL OF CONNECTOR FROM MIC HOUSING

2.1.0 INSTALLATION OF TOOL ONTO CONNECTOR

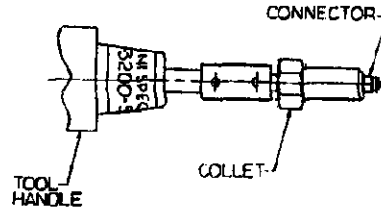
2.1.1 SCREW COLLET ONTO CONNECTOR UNTIL COLLET STOPS ROTATING FREELY. (KEEP TOOL HANDLE STATIONARY RELATIVE TO MIC HOUSING).

2.1.2 TURN HANDLE OF TOOL CLOCKWISE UNTIL IT CLICKS. (KEEP COLLET STATIONARY RELATIVE TO MIC HOUSING USING A 5/8 WRENCH).



2.2.0 REMOVAL OF CONNECTOR FROM MIC HOUSING

2.2.1 WITH THE 5/8 WRENCH, TURN COLLET COUNTER CLOCKWISE RELATIVE TO MIC HOUSING. (LEAVE TOOL HANDLE FREE TO ROTATE WITH COLLET). AFTER JAM IS BROKE BETWEEN CONNECTOR AND MIC HOUSING, TURN TOOL HANDLE COUNTER CLOCKWISE UNTIL CONNECTOR UNSCREWS FROM MIC HOUSING.



2.3.0 REMOVAL OF CONNECTOR FROM TOOL

2.3.1 USING A 5/8 WRENCH TURN COLLET COUNTER CLOCKWISE RELATIVE TO TOOL HANDLE.

2.3.2 USING FINGERS SCREW CONNECTOR FROM TOOL. (KEEP COLLET AND TOOL HANDLE STATIONARY).

