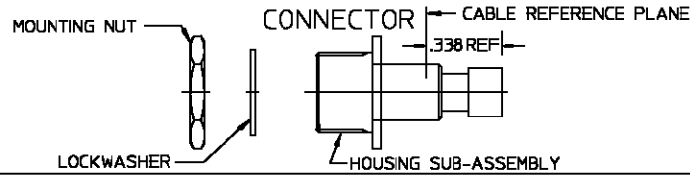
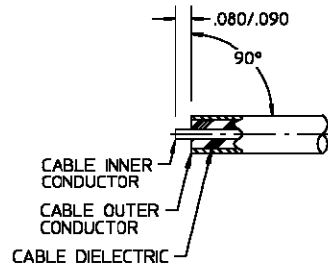


CONNECTOR TYPE	CABLE TYPE	TOOLS REQ'D
OSP BULKHEAD FEEDTHROUGH CABLE JACK REAR MOUNT COMPRESSION CRIMP ATTACH.	.141 S.R. COAXIAL CABLE	CRIMP TOOL KIT: 2598-5200-54
		OPTIONAL TOOLING: HAND TRIM & POINT TOOL: 2598-5116-54
		PRODUCTION TOOLING AVAILABLE - SEE OMNI SPECTRA'S CATALOG

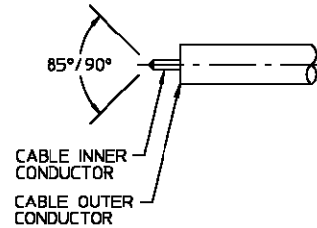


ASSEMBLY OPERATIONS

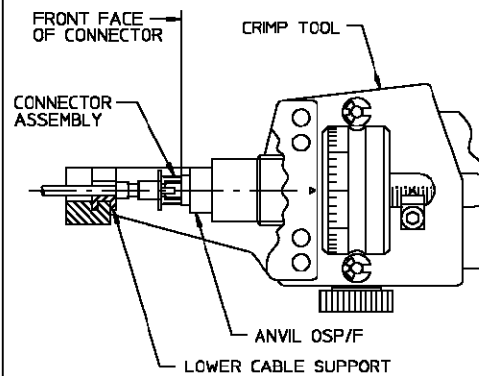
- 1.0 PREPARATION OF CABLE**
1.1 TRIM CABLE TO DIMENSION SHOWN.



- 2.0 SHAPE INNER CONDUCTOR OF CABLE**
2.1 FILE BLUNT END OF INNER CONDUCTOR TO AN 85°-90° CONE/



- 3.0 INSTALL CABLE INTO CONNECTOR ASSEMBLY**
3.1 INSTALL LOWER CABLE SUPPORT (FOR .141 CABLE) AND ANVIL (OSP/F) INTO CRIMP TOOL.
3.2 SET CRIMP LENGTH ON CRIMP TOOL TO .710
3.3 CAREFULLY INSERT CABLE INNER CONDUCTOR INTO PRE-ASSEMBLED CENTER CONTACT OF CONNECTOR ASSEMBLY UNTIL CABLE BOTTOMS ON SHOULDER IN CONNECTOR ASSEMBLY.
3.4 PLACE ASSEMBLY INTO CRIMP TOOL, BOTTOMING THE FRONT FACE OF THE CONNECTOR AGAINST ANVIL AND ALLOWING THE CABLE TO SETTLE IN THE LOWER CABLE SUPPORT.
3.5 SQUEEZE HANDLES OF CRIMP TOOL UNTIL RATCHET RELEASES.
3.6 ASSEMBLY IS NOW COMPLETE.



CABLE TRIM INFORMATION

- NOTE 1:
DIMENSIONS FROM CONNECTOR REFERENCE PLANE TO WHERE CABLE OUTER CONDUCTOR SEATS .301 ±.010
NOTE 2:
WHEN ASSEMBLED DIMENSIONS FROM REFERENCE PLANE TO END OF REAR BUSHING .513 ±.010