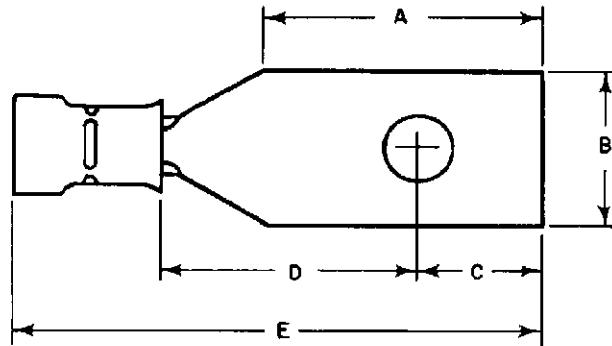




A-MP PIDG* TERMINALS FOR
BU-SHIP TERMINAL BLOCKS

IS 1198	
RELEASED	4-20-60
REVISED	8-19-63



Listed below are AMP Pre-Insulated Diamond Grip (PIDG) Terminals for Bu-Ship Terminal Blocks. See AMP Instruction Sheet No. 1088 for Solistrand* and Instruction Sheet No. 1207 for Diamond Grip*(DG) Part Numbers.

BU-SHIPS BLOCKS	NAVY TONGUE SHAPE	NAVY WIRE SIZE	AWG WIRE SIZE	A ±,031	B ±,005	C ±,010	D MIN.	E MAX.	STUD SIZE	A-MP PART NO.	
										VINYL INS.	NYLON INS.
3TB, 4TB 5TB, 16TB 17TB	L80	1-2	22-16	.701	.390	.321	.621	1.359	8	327932	2-327932-I
		2½-4	16-14	.701	.390	.321	.621	1.359	8	327934	2-327934-I
		6-9	12-10	.701	.390	.321	.621	1.531	8	327936	2-327936-I
6TB 7TB 9TB	L81	1-2	22-16	.482	.302	.227	.465	1.109	6	327938	2-327938-I
		2½-4	16-14	.482	.302	.227	.465	1.109	6	327940	2-327940-I
		6-9	12-10	.482	.302	.227	.465	1.281	6	327942	2-327942-I
15TB	L82	1-2	22-16	.482	.302	.227	.465	1.109	8	327944	2-327944-I
		2½-4	16-14	.482	.302	.227	.465	1.109	8	327946	2-327946-I
		6-9	12-10	.482	.302	.227	.465	1.281	8	327948	2-327948-I
8TB	L83	1-2	22-16	.328	.277	.167	.277	.859	5	327950	2-327950-I
		2½-4	16-14	.328	.277	.167	.277	.859	5	327952	2-327952-I
		6-9	12-10	.328	.277	.167	.277	1.046	5	327954	2-327954-I
10TB & 11TB	L84	1-2	22-16	.450	.237	.195	.404	1.015	6	327956	2-327956-I
		2½-4	16-14	.450	.237	.195	.404	1.015	6	327958	2-327958-I
		6-9	12-10	.450	.237	.195	.404	1.203	6	327960	2-327960-I
25TB	L85	1-2	22-16	.450	.237	.195	.404	1.015	4	327962	2-327962-I
		2½-4	16-14	.450	.237	.195	.404	1.015	4	327964	2-327964-I
		6-9	12-10	.450	.237	.195	.404	1.203	4	327966	2-327966-I
26TB	L86	1-2	22-16	.296	.237	.143	.237	.796	4	327968	2-327968-I
		2½-4	16-14	.296	.237	.143	.237	.796	4	327970	2-327970-I
		6-9	12-10	.296	.237	.143	.237	.984	4	327972	2-327972-I

Copyright 1961 by AMP Inc. All international rights reserved. AMP is a trademark of AMP Inc. in the U. S. A. and foreign. AMP products covered by U. S. and foreign patents and/or patents pending.

* Trademark of AMP Incorporated