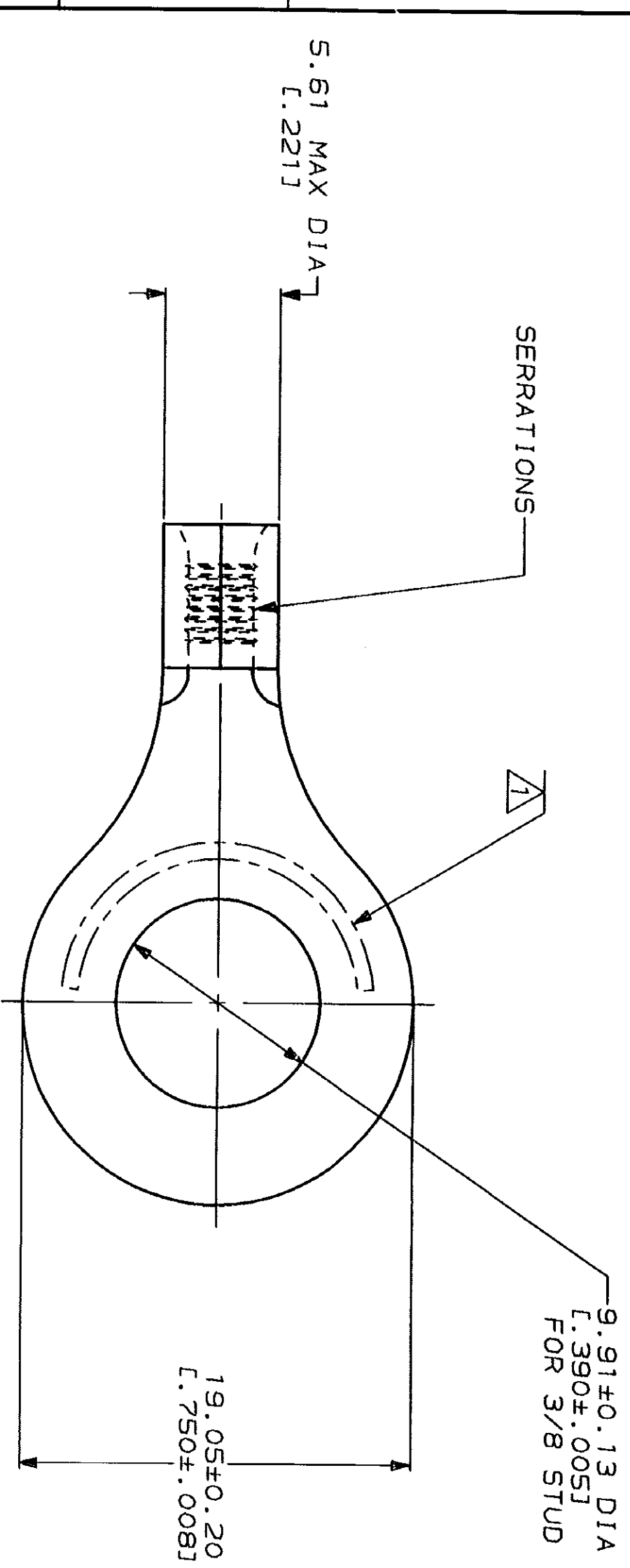


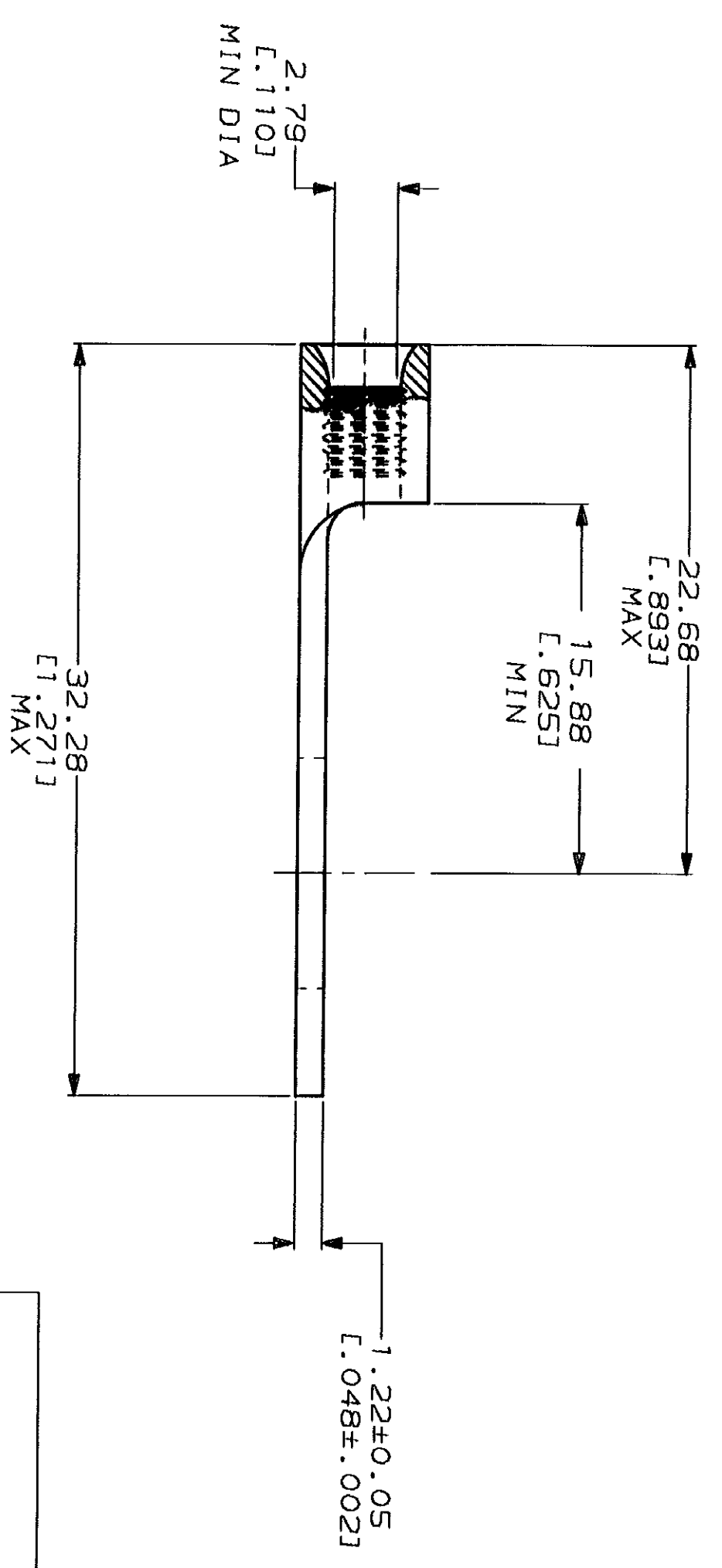
LOC	DIST	REV	ZONE	LTR	DESCRIPTION	DATE	APPD
G	14	P			RELEASED PER 0720-0008-93	2-1-93	JSD DAP

METRIC
 DIMENSIONS LISTED IN mm [INCHES]



AMP WIRE RANGE 16-14HD AWG STRANDED	UL E13288 Listed
LR7189 Certified	MILITARY P/N AND CLASS
NOT CERTIFIED	NOT APPLICABLE

△ STAMP AMP 16-14HD* APPROX AS SHOWN



**AMP INCORPORATED
 CUSTOMER SERVICE SYSTEMS**

FOR ADDITIONAL PRODUCT INFORMATION OR COPIES OF DRAWINGS AND TECHNICAL DOCUMENTS	PRODUCT INFORMATION CENTER 1-800-522-6752
FOR APPLICATION TOOLING INFORMATION	TOOLING ASSISTANCE CENTER 1-800-722-1111
FOR ORDER ENTRY	1-800-526-5142

MAX RECOMMENDED OPERATING
 TEMPERATURE: 170°C MAX
 VOLTAGE RATING:
 NOT APPLICABLE
 WIRE CROSS SECTIONAL AREA RANGE:
 1.04-2.62mm² [2,050-5,180] CIR MILS
 STRANDED

DO NOT SCALE PRINT.
 UNLESS SPECIFIED
 DIMENSIONS IN mm - HIGHEST
 TOLERANCES ON:
 2 PLC DEC ±
 3 PLC DEC ±
 ANGLES ±
 MATERIAL
 COPPER PER
 ASTM B-152
 ANNEALED
 FINISH
 TIN PLATE
 0.00254 [L.000100] MIN
 THK PER MIL-T-10727

DR 2-1-93 TA BRINKMAN	CHK 2-1-93 DA PATTERSON
APPD 2-1-93 DE MILLER	APPD 2-1-93 JL MECKLEY
APPLICATION SPEC	
WEIGHT	

AMP AMP Incorporated Harrisburg, PA 17105-3608	NAME TERMINAL, RING TONGUE, HEAVY DUTY, BUDGET
SIZE SCALE 4:1	CAGE CODE 00779
DRAWING NO 34829	SHEET 1 OF 1