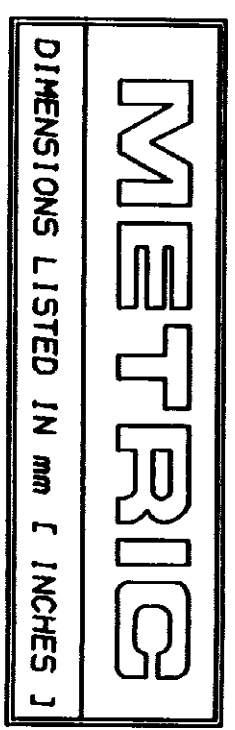
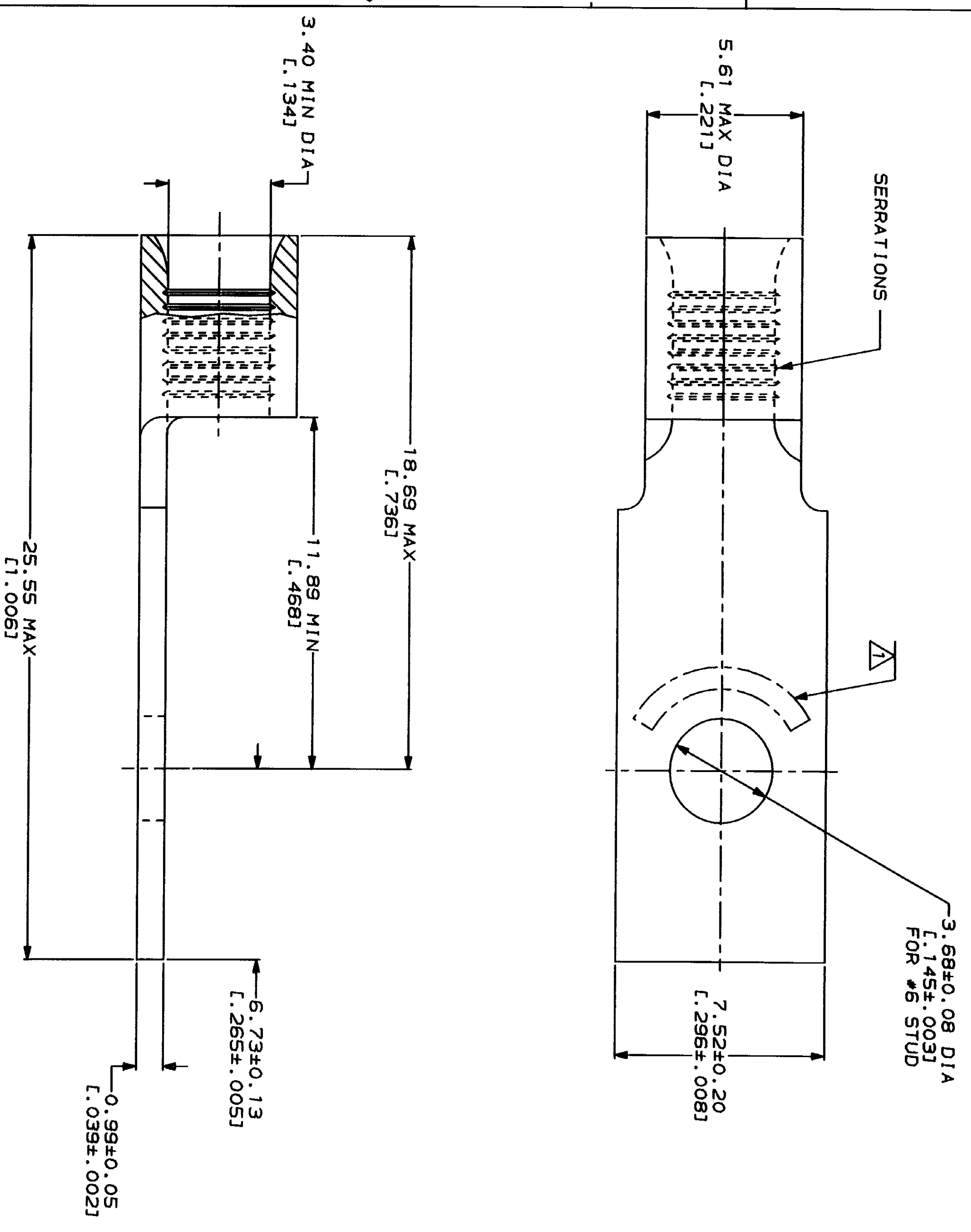


LOC	QTY	REV	DATE	APP
G	14	A	2/28/94	AMP



WIRE RANGE	AMP	UL E13288 Listed
12-10 AWG STRANDED	●	MILITARY P/N AND CLASS
12-10 AWG STRANDED	●	NOT APPLICABLE
NOT CERTIFIED	●	NOT APPLICABLE

△ STAMP AMP 12-10\* APPROX AS SHOWN



AMP INCORPORATED  
CUSTOMER SERVICE SYSTEMS

FOR ADDITIONAL PRODUCT INFORMATION OR COPIES OF DRAWINGS AND TECHNICAL DOCUMENTS	PRODUCT INFORMATION CENTER 1-800-522-6752	MAX RECOMMENDED OPERATING TEMPERATURE: 170°C MAX	DO NOT SCALE PRINT. DIMENSIONS SPECIFIED IN MILLIMETERS. TOLERANCES ON DIMENSIONS: 1. PLG DEC # - .0025 2. PLG DEC # - .0025 3. PLG DEC # - .0025
FOR APPLICATION TOOLS INFORMATION	TOOLING ASSISTANCE CENTER 1-800-722-1111	VOLTAGE RATING: NOT APPLICABLE	DR 1-29-93 TA BRINKMAN
FOR ORDER ENTRY	1-800-526-5142	WIRE CROSS SECTIONAL AREA RANGE: 2.62-6.64mm <sup>2</sup> (S,180-13,100) CIR MILS STRANDED	CHK 1-29-93 DA PATTERSON

FINISH: TIN PLATE 0.0025±L.000100] MIN THK PER MIL-T-10727	APPLICATION SPEC	NAME: AMP INCORPORATED Harrisburg, PA 17125-3608
SIZE: 00779	CAGE CODE: 00779	DRAWING NO: 322945
SCALE: 8:1		SHEET: 1 OF 1