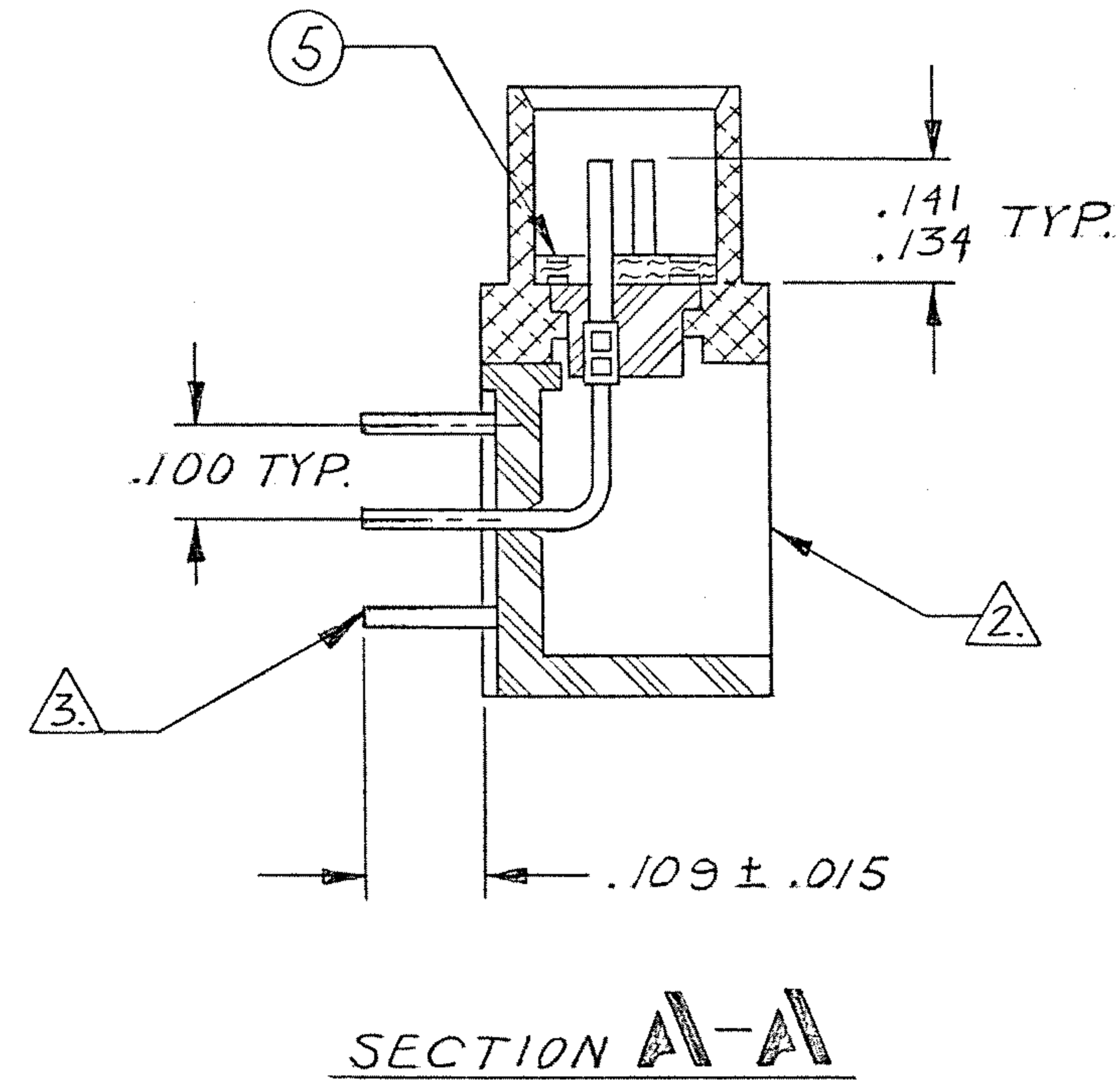
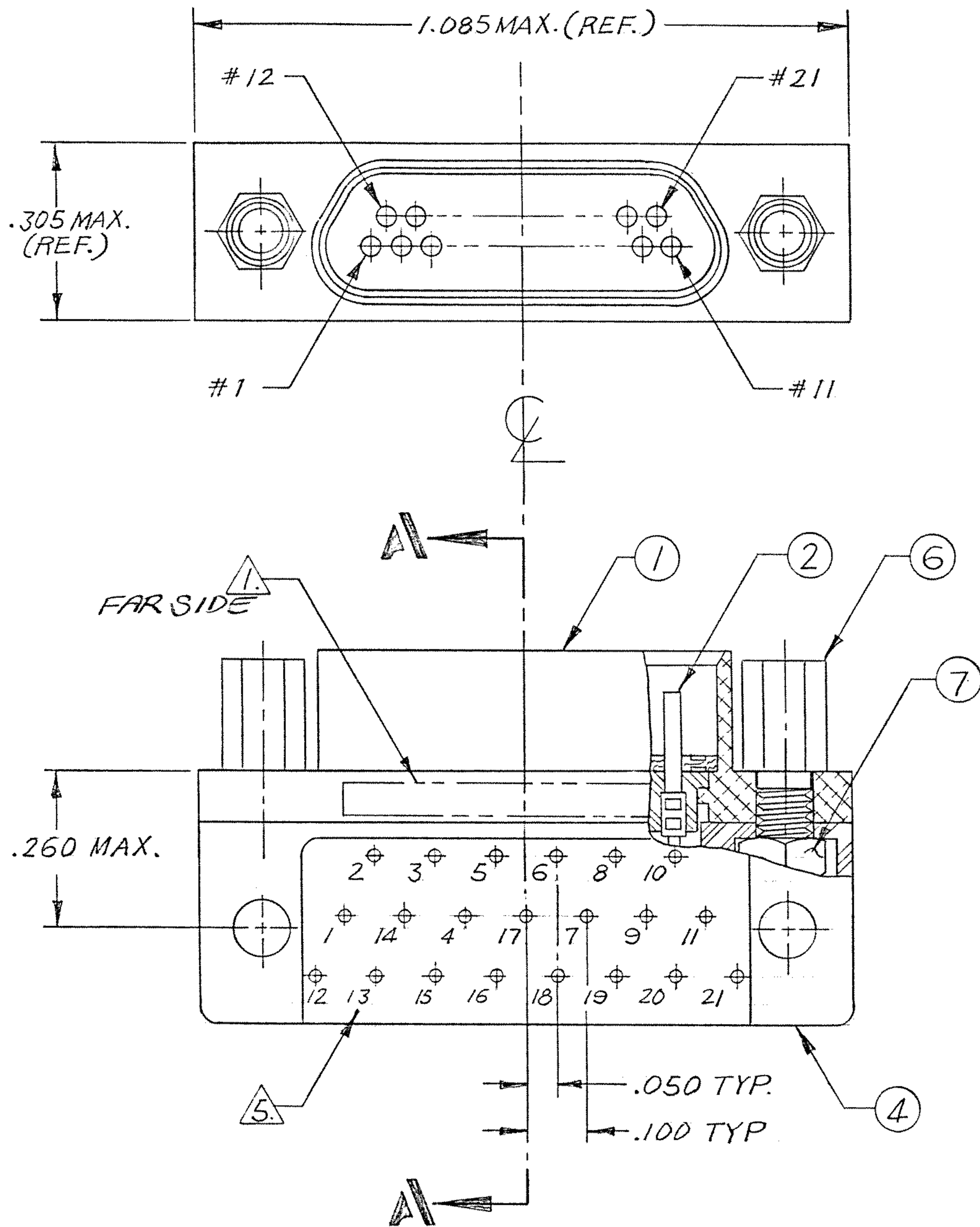


REVISIONS					
ZONE	LTR	DESCRIPTION	DATE	ENG	APPROVED
	C1	Update Per ECO-11-016360	8/10/11	PJS	CEP



NOTES: UNLESS OTHERWISE SPECIFIED.

- 1. MARKING= MARK OPPOSITE SIDE PER MEP 203-12
- 2. ASSEMBLE ALL ITEMS (ITEM #1 THRU #7), THEN FILL WITH EPDXY AROUND HEX NUT & T.B. BLOCK BACKPOTTING AS SHOWN. USE HYSOL # 4215 & #3561.
- 3. TERMINAL WIRES TO BE SOLDER COATED .003 MAX. (PER SIDE) IN LOCATION SHOWN. SOLDER TO BE QQ-S-571, TYPE Sm 63, FLUX PER MIL-F-14256, TYPE A.
- 4. CRIMP LEADS INTO CONTACTS PER MEP 302-05.
- 5. TERMINAL IDENT NOS AS SHOWN (VIEWED FROM THE MOUNTING SURFACE) DO NOT ACTUALLY APPEAR ON THE PART (FOR IDENTIFICATION ONLY).

NEXT ASSY	USED ON
APPLICATION	

QTY REQD	CODE IDENT	PART OR IDENTIFYING NO.	NOMENCLATURE OR DESCRIPTION	
PARTS LIST				
UNLESS OTHERWISE SPECIFIED DIMENSIONS ARE IN INCHES TOLERANCES ARE:		CONTRACT NO.		
FRACTIONS	DECIMALS	ANGLES		
±	.XX ±	±		
	.XXX ±	.005		
MATERIAL		APPROVALS	DATE	 TE Connectivity METAL SHELL 90° LD-PROFILE CONNECTOR (MIL-C-83513)) MCK-**-P-21SRT1 (WI JACKPOST) 094-4306-7000 PROD. CODE 845 CODE M
		DRAWN <i>YONG CHU</i>	3/5/84	
		CHECKED <i>Wong Chiu</i>	4/11/84	
		PR. ENG. <i>Wong Chiu</i>	8-13-80	
FINISH		APPD.		SIZE
		<small>These drawings and specifications are the property of Microdot Inc., are issued in strict confidence and shall not be divulged, be reproduced or copied, or used as the basis for the manufacture or sale of any article without written permission of Microdot Inc.</small>		CODE IDENT NO.
				DRAWING NO.
				C 98278
				3-1532133-4
				SCALE ~
				SHEET / OF /