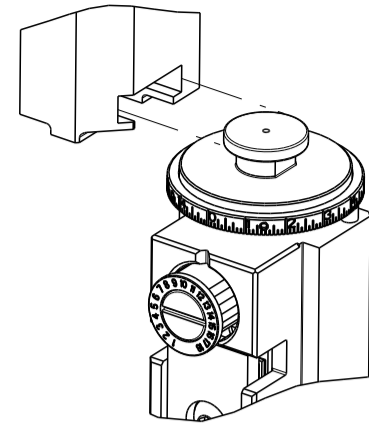


PART NUMBER	REVISION	DESCRIPTION	FEED TYPE
2836392-2	G	FINE CRIMP HEIGHT ADJUST	PNEUMATIC
3-2836392-2	G	FINE CRIMP HEIGHT ADJUST	PNEUMATIC
7-2836392-2	G	PNEUMATIC AND CRIMP TOOLING KIT	PNEUMATIC
7-2836392-7	B	CRIMP TOOLING KIT	-

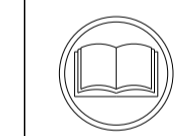
ATLANTIC VERSION TERMINATOR INTERFACE ADAPTER



APPLICATOR DATA		
CRIMP	SIZE	TYPE
WIRE	5.20mm [ .205 ]	O
INSUL	-	-
APPLICATOR INSTRUCTIONS 408-35042		

TERMINAL DATA: TE TERMINAL		TE CRIMP SPECIFICATION
TERMINAL NAME: SHEILD, SHELL, BARREL		
WIRE STRIP LENGTH		INSULATION DIAMETER RANGE
16.80-17.60 mm [ .661-.693 IN ]		Ø4.40-4.80 mm [ .173-.189 IN ]
TERMINAL APPLICATION SPECIFICATION	114-94396	-
TERMINALS APPLIED		
TE TERMINAL	TE TERMINAL	TE TERMINAL
2294457-2	2294457-3	

WIRE SIZE	CRIMP HEIGHT mm [INCH]	CRIMP HEIGHT REFERENCE SETTING
DACAR 566	5.20+/-0.30 [ .205+/- .012 ]	9.0



- 1 RECOMMENDED SPARE PARTS
- 2 REFER TO SUPPLIED INSTRUCTION SHEET FOR CLEANING, LUBRICATION AND STORAGE OF APPLICATOR.
- 3 CRIMP HEIGHT REFERENCE SETTING WAS THE SETTING USED WHEN THE APPLICATOR WAS QUALIFIED AT THE FACTORY. ADJUSTMENT MAY BE NECESSARY WHEN RUNNING APPLICATOR IN THE FIELD.
- 4 TERMINAL PITCH NOT COMPATIBLE WITH MECHANICAL FEED.
- 5. UNLESS SPECIFIED OTHERWISE TORQUE VALUES SHALL BE USED PER DOCUMENT, 101-35000.
- 6 THIS APPLICATOR IS EQUIPPED WITH THE DOUBLE ACTING FEED WITH SENSORS AND IS APPLICATION SPECIFIC AND DOES NOT REQUIRE ITEMS 49 & 248.
- 7 ITEM 18 IS NOT REQUIRED WHEN RUNNING IN A LEADMAKER.

**\*WARNING**  
ON INSTALLATION, SET WIRE DISC TO CRIMP HEIGHT REFERENCE SETTING FOR LARGEST WIRE SIZE. CRIMP HEIGHT REFERENCE SETTINGS GREATER THAN THE VALUE SHOWN MAY CAUSE DAMAGE TO THE CRIMP TOOLING. REFER TO THE INSTRUCTION SHEET FOR PROPER SETUP AND ADJUSTMENTS.

LOC	DIST	REVISIONS					
A	66	P	LTN	DESCRIPTION	DATE	OWN	APVD
		D		ECR-17-002352	22FEB2017	TB	TE
		E		ECR-19-010233	01JUL2019	TB	GB
		F		ECR-19-012512	08AUG2019	FJ	GB
		G		ECR-20-013395	21SEP2020	TB	RK

-	-	1	-	2844950-1	AIR FEED MODULE	290
-	1	1	1	2119791-5	DEPRESSOR, WIRE	286
-	1	1	1	7-18023-7	SCR, SKT HD CAP M3 X 4.0	283
-	1	1	1	2280441-1	INSERT, SHEAR	282
-	1	1	1	1803078-3	SPACER, PRECISION	259
-	1	-	1	2119641-1	FEED CAM, AIR FEED	248
-	1	-	1	2844940-1	AIR FEED MODULE	238
-	1	1	1	1-356885-0	STOP, SHEAR	237
-	REF	REF	REF	994970-2	COUNTER, MAGNETIC	164
-	1	1	1	1-22281-8	SPRING, COMPRESSION	121
-	1	1	1	2844908-1	SCREW, LOCKING	99
-	1	1	1	2844907-1	POST, LOCKING	98
-	1	1	1	1-690438-0	FRONT STRIP GUIDE	96
-	2	2	2	2168083-1	SCR, SKT HD CAP, RoHS, M3 X 8.0	95
-	1	1	1	2168083-6	SCR, SKT HD CAP, RoHS, M5 X 65	93
-	1	1	1	455888-4	SPACER, CRIMPER	82
-	1	1	1	1803607-3	DOCUMENTATION PACKAGE	71
-	1	1	1	2119791-5	DEPRESSOR, WIRE	70
-	1	1	1	2119943-1	WASHER, SPACER	69
-	1	1	1	2119740-1	TAG, IDENTIFICATION	67
-	2	2	2	2168078-1	SCREW, DRIVE, RH, RoHS, 2 x .188	66
-	2	2	2	2-18032-5	SCR, SET, FLT PNT, M5 X 20.0	61
-	1	1	1	2168083-2	SCR, SKT HD CAP, RoHS, M4 X 8.0	60
-	1	1	1	5-18022-5	SCR, HEX HD CAP, M4 X 6.0	59
-	1	1	1	1338683-1	FEED PAWL	56
-	6	6	6	2168083-3	SCR, SKT HD CAP, RoHS, M4 X 12.0	54
-	2	2	2	1-2168083-0	SCR, SKT HD CAP, RoHS, M4 X 10	53
-	1	-	1	18023-9	SCR, SKT HD CAP M4 X 6.0	49
-	1	1	1	1803583-9	APPLICATOR BASIC ASSEMBLY, SF	46
-	1	1	1	1803515-2	RAM ASSEMBLY, SF ATLANTIC	44
-	1	1	1	1803602-2	SCR, BHSC, RoHS (M8 X 40)	41
-	1	1	1	1803414-2	WIRE GUIDE	34
-	2	2	2	2079383-8	SCR, BHSC, RoHS (M4 X 16)	33
-	2	2	2	1-2844962-5	SPACER, CYLINDRICAL, STRIP GUIDE	30
-	1	1	1	1803771-3	PLATE, REAR STRIP GUIDE	29
-	1	1	1	2119943-1	WASHER, SPACER	28
-	2	2	2	22283-1	SPRING, COMPRESSION	27
-	1	1	1	356835-1	LEVER, DRAG RELEASE	26
-	1	1	1	240792-1	DRAG, TERMINAL	25
-	1	1	1	1633630-2	PLATE, STRIP GUIDE	24
-	1	1	1	980371-4	SCR, SKT HD SHLDR 5.0 DIA X 6.0	23
-	1	1	1	2168083-2	SCR, SKT HD CAP, RoHS, M4 X 8.0	21
-	1	1	1	1-18028-2	WASHER, FLAT, REG M4	20
-	1	1	1	2119533-1	STRIPPER, SIDE FEED	19
-	1	1	1	469465-4	STOP, WIRE	18
-	1	1	1	1803495-1	FLOATING SHEAR, REAR	17
-	1	1	1	2119862-1	SHEAR HOLDER, REAR	14
-	1	1	1	3-22280-3	SPRING, COMPRESSION	12
-	-	-	-	-	-	10
-	-	-	-	-	-	9
-	1	2	1	1803416-3	ANVIL, COMBINATION	8
-	-	-	-	-	-	7
-	1	1	1	1803494-1	DEPRESSOR SHEAR, REAR	6
-	1	1	1	1803203-1	BLOCK, FRONT DEPRESSOR	5
-	-	-	-	-	-	4
-	-	-	-	-	-	3
-	-	-	-	-	-	2
-	1	2	1	2-1633723-6	CRIMPER, WIRE O	1

ATLANTIC VERSION  
Shown on sheets 1 of 4 & 2 of 4  
(Pacific version shown on sheets 3 of 4 & 4 of 4)

DIMENSIONS:		TOLERANCES UNLESS OTHERWISE SPECIFIED:		MATERIAL:		FINISH:	
mm	0 PLC ±	1 PLC ±	2 PLC ±	3 PLC ±	4 PLC ±	ANGLES ±	FINISH ±
MATERIAL		FINISH		WEIGHT		SCALE	
-		-		-		1:2	

CHK	DATE	DESCRIPTION
M. RILEY	21JUL2016	TE Connectivity
CHK	21JUL2016	Harrisburg, PA 17105-3608
APVD	21JUL2016	

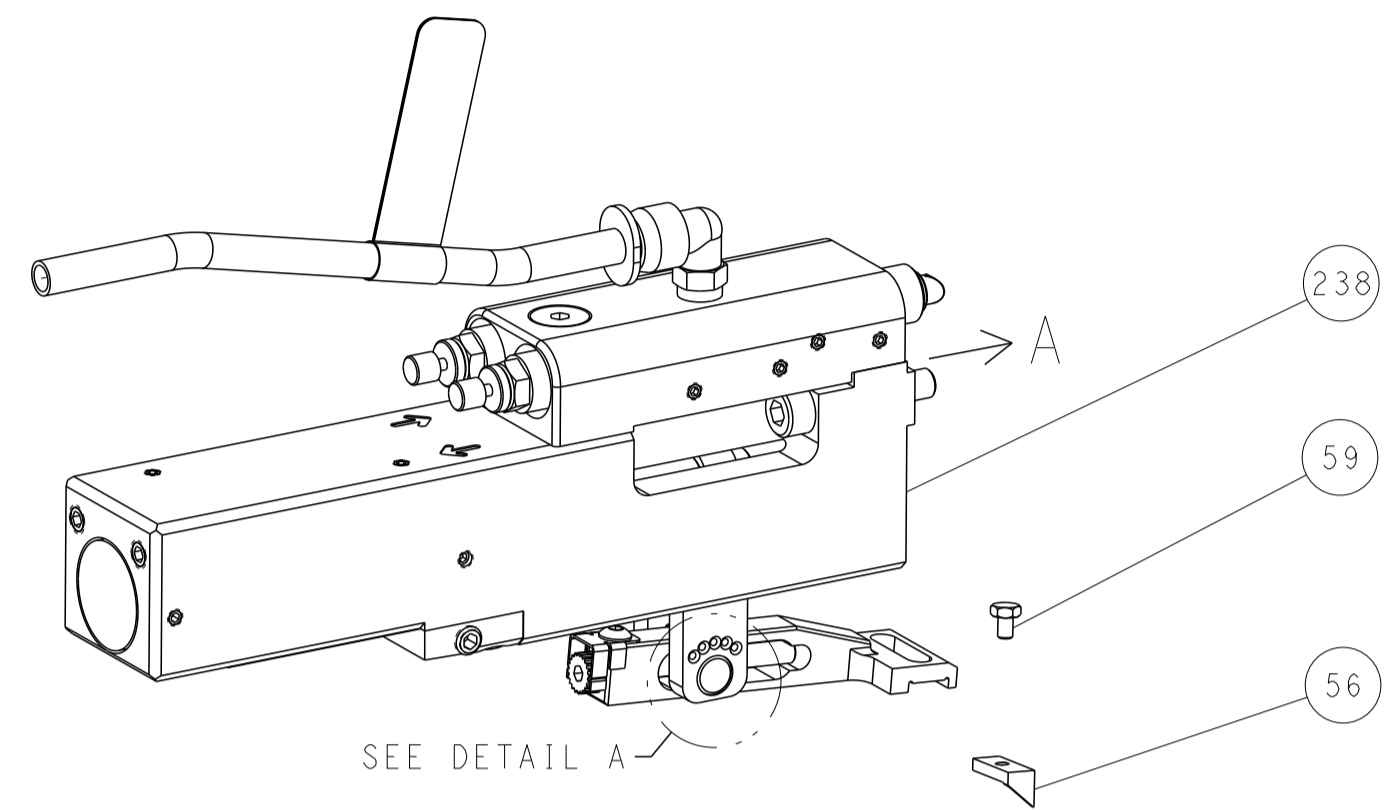
NAME	SIZE	CAGE CODE	DRAWING NO	RESTRICTED TO
Ocean Side Feed Applicator	A1	00779	2836392	-

Customer Accessible Production Drawing SHEET 1 OF 4 REV G

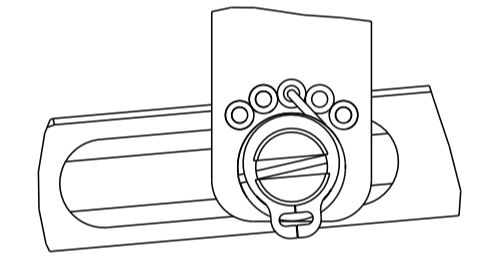
LOC	DIST	REVISIONS					
		P	LTN	DESCRIPTION	DATE	OWN	APVD
A	66	-	-	SEE SHEET 1	-	-	-

# FEED TYPE

## PNEUMATIC

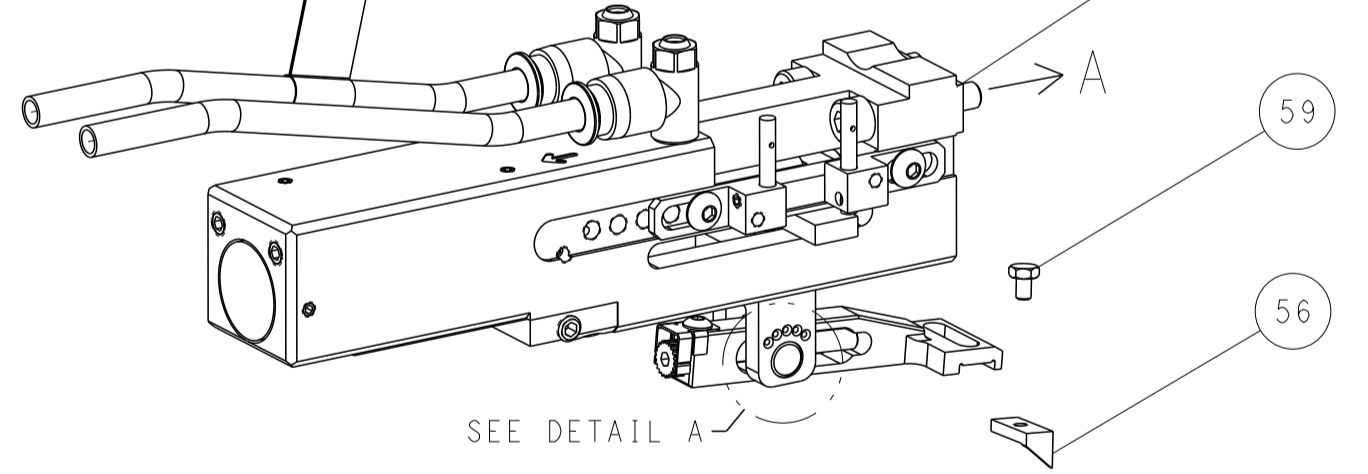


## FEED SPRING SETTING POSITION (SHOWN FROM REAR SIDE)

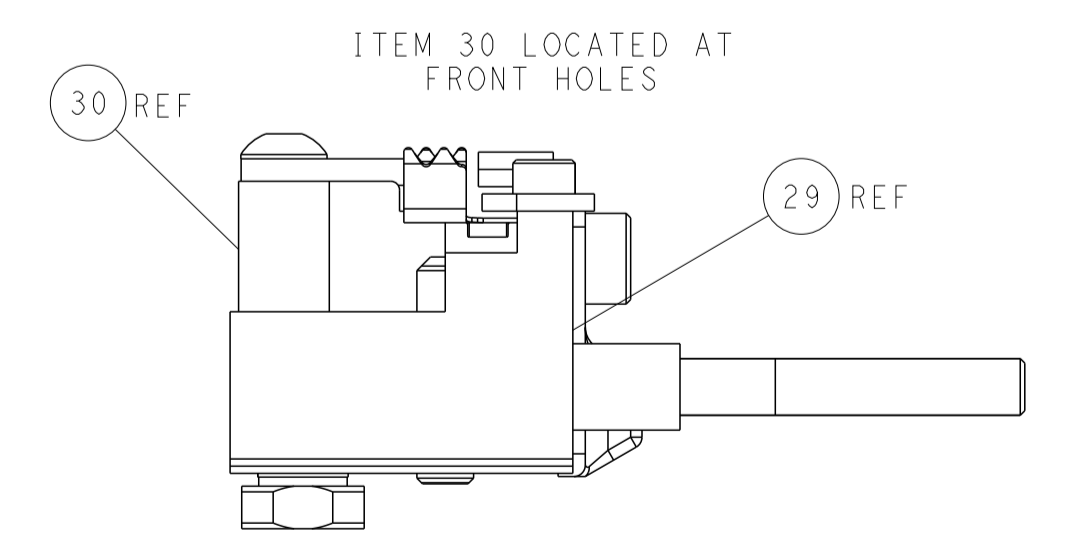
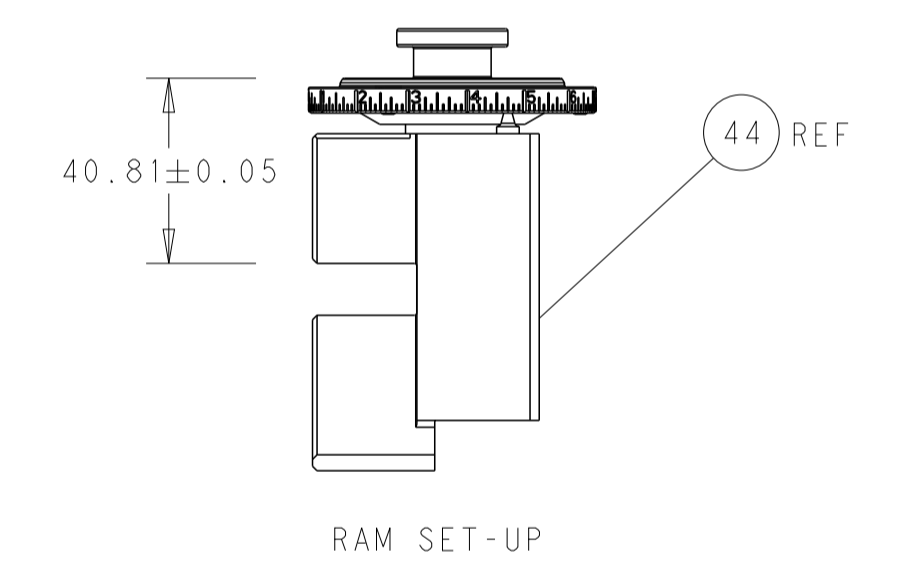
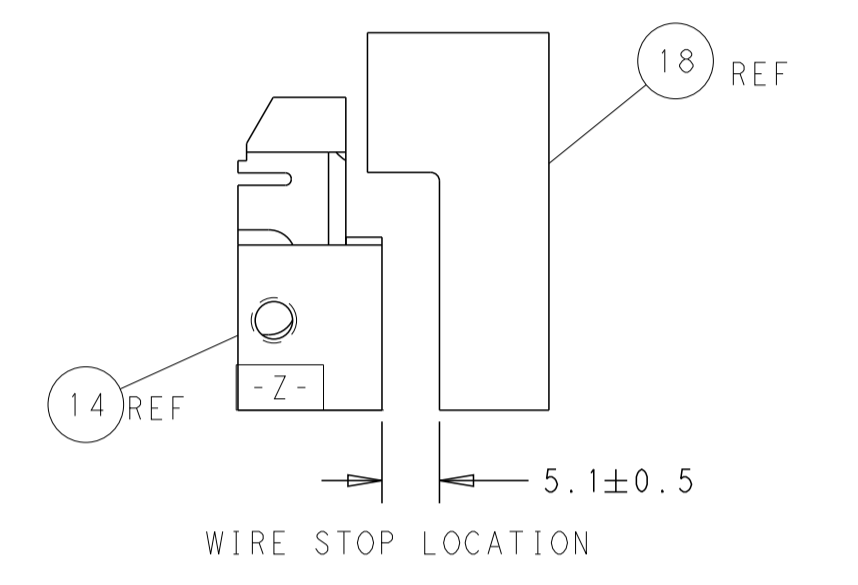
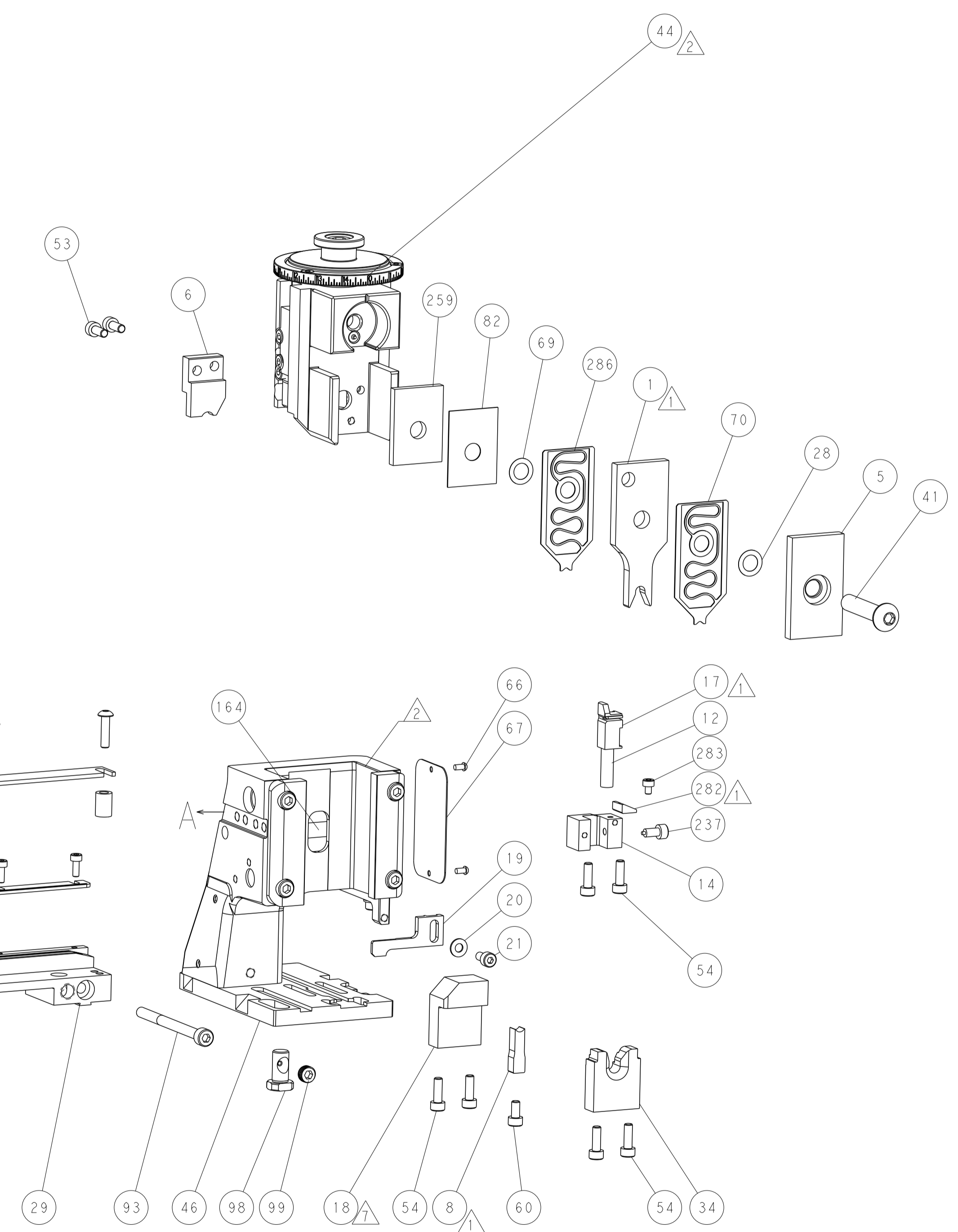
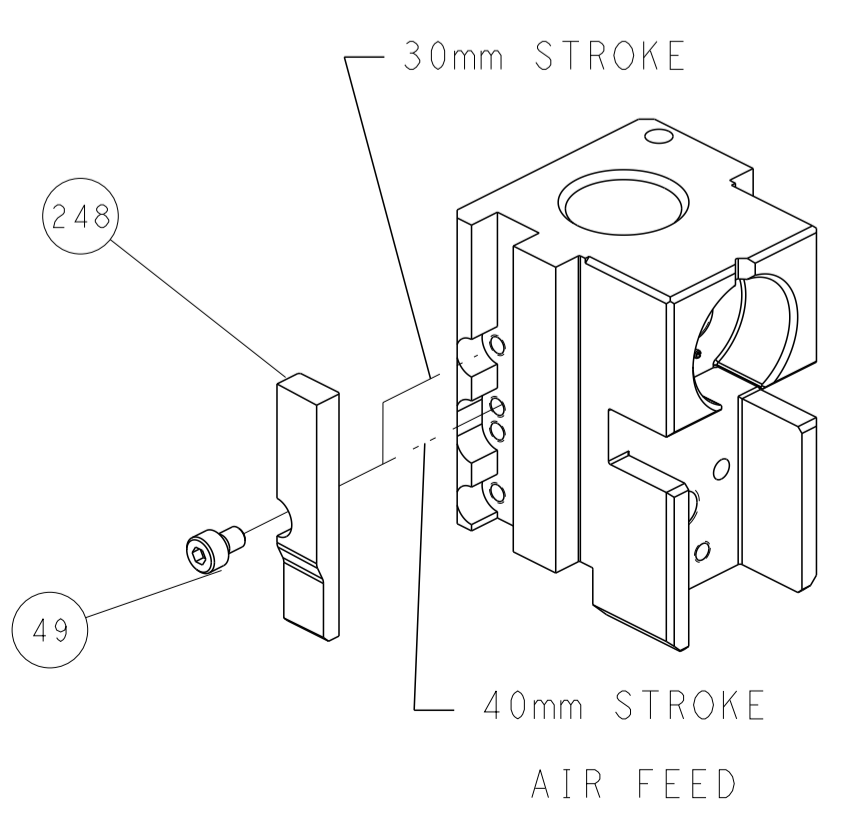


DETAIL A

## DOUBLE ACTING PNEUMATIC WITH SENSORS



## CAM POSITION



**ATLANTIC VERSION**  
 Shown on sheets 1 of 4 & 2 of 4  
 (Pacific version shown on sheets 3 of 4 & 4 of 4)

<small>THIS DRAWING IS UNPUBLISHED. RELEASED FOR PUBLICATION. ALL RIGHTS RESERVED. © 2016 BY TYCO ELECTRONICS CORPORATION. THIS DRAWING IS UNPUBLISHED. RELEASED FOR PUBLICATION. ALL RIGHTS RESERVED. © 2016 BY TYCO ELECTRONICS CORPORATION. THIS DRAWING IS UNPUBLISHED. RELEASED FOR PUBLICATION. ALL RIGHTS RESERVED. © 2016 BY TYCO ELECTRONICS CORPORATION.</small>		DWN M. RILEY 21JUL2016 CHK - 21JUL2016 APVD - 21JUL2016	TE Connectivity Harrisburg, PA 17105-3608
DIMENSIONS: mm TOLERANCES UNLESS OTHERWISE SPECIFIED: 0 PLC ± 1 PLC ± 2 PLC ± 3 PLC ± 4 PLC ± ANGLES ± MATERIAL - FINISH -		NAME Ocean Side Feed Applicator PRODUCT SPEC - APPLICATION SPEC - SIZE CAGE CODE DRAWING NO. A1 00779 C-2836392 WEIGHT - Customer Accessible Production Drawing	RESTRICTED TO - SCALE 1:2 SHEET 2 OF 4 REV G

PART NUMBER	REVISION	DESCRIPTION	FEED TYPE
2-2836392-2	G	FINE CRIMP HEIGHT ADJUST	PNEUMATIC
4-2836392-2	G	FINE CRIMP HEIGHT ADJUST	△ PNEUMATIC
7-2836392-7	B	CRIMP TOOLING KIT	-

PACIFIC VERSION TERMINATOR  
 INTERFACE ADAPTER



APPLICATOR DATA

CRIMP	SIZE	TYPE
WIRE	5.20 mm [.205]	○
INSUL	-	-

APPLICATOR INSTRUCTIONS  
 408-35042

TERMINAL DATA: TE TERMINAL TE CRIMP SPECIFICATION

WIRE STRIP LENGTH	INSULATION DIAMETER RANGE
16.80-17.60 mm [.661-.693 IN]	∅4.40-4.80 mm [.173-.189 IN]

TERMINAL APPLICATION SPECIFICATION 114-94396

TERMINALS APPLIED △

TE TERMINAL	TE TERMINAL	TE TERMINAL	TE TERMINAL
2294457-2	2294457-3		

WIRE SIZE	CRIMP HEIGHT mm [INCH]	CRIMP HEIGHT REFERENCE SETTING
DACAR 566	5.20 +/- 0.30 [.205 +/- .012]	9.0

- 1 RECOMMENDED SPARE PARTS
- 2 REFER TO SUPPLIED INSTRUCTION SHEET FOR CLEANING, LUBRICATION AND STORAGE OF APPLICATOR.
- 3 CRIMP HEIGHT REFERENCE SETTING WAS THE SETTING USED WHEN THE APPLICATOR WAS QUALIFIED AT THE FACTORY. ADJUSTMENT MAY BE NECESSARY WHEN RUNNING APPLICATOR IN THE FIELD.
- 4 TERMINAL PITCH NOT COMPATIBLE WITH MECHANICAL FEED.
- 5. UNLESS SPECIFIED OTHERWISE TORQUE VALUES SHALL BE USED PER DOCUMENT, 101-35000.
- 6 THIS APPLICATOR IS EQUIPPED WITH THE DOUBLE ACTING FEED WITH SENSORS AND IS APPLICATION SPECIFIC AND DOES NOT REQUIRE ITEMS 49 & 151.
- 7 ITEM 18 IS NOT REQUIRED WHEN RUNNING IN A LEADMAKER.

**\*WARNING**  
 ON INSTALLATION, SET WIRE DISC TO CRIMP HEIGHT REFERENCE SETTING FOR LARGEST WIRE SIZE. CRIMP HEIGHT REFERENCE SETTINGS GREATER THAN THE VALUE SHOWN MAY CAUSE DAMAGE TO THE CRIMP TOOLING. REFER TO THE INSTRUCTION SHEET FOR PROPER SETUP AND ADJUSTMENTS.

LOC	DIST	REV	DATE	BY	APPV
A	66				

REV	DATE	BY	APPV	DESCRIPTION	DATE	BY	APPV
-				2844950-1 AIR FEED MODULE			290
-				2119791-5 DEPRESSOR, WIRE			286
-				7-18023-7 SCR, SKT HD CAP M3 X 4.0			283
-				2280441-1 INSERT, SHEAR			282
-				1803078-3 SPACER, PRECISION			259
-				2844940-1 AIR FEED MODULE			238
-				1-356885-0 STOP, SHEAR			237
-				994970-2 COUNTER, MAGNETIC			164
△				2119641-2 FEED CAM, AIR FEED			151
-				2168083-8 SCR, SKT HD CAP, RoHS, M4 X 16			144
-				2168083-9 SCR, SKT HD CAP, RoHS, M4 X 20			143
-				1-1803583-0 APPLICATOR BASIC ASSEMBLY, SF			141
-				1803516-2 RAM ASSEMBLY, SF PACIFIC			140
-				1-22281-8 SPRING, COMPRESSION			121
-				2844908-1 SCREW, LOCKING			99
-				2844907-1 POST, LOCKING			98
-				1-690438-0 FRONT STRIP GUIDE			96
-				2168083-1 SCR, SKT HD CAP, RoHS, M3 X 8.0			95
-				2168083-6 SCR, SKT HD CAP, RoHS, M5 X 65			93
-				455888-4 SPACER, CRIMPER			82
-				1803607-3 DOCUMENTATION PACKAGE			71
-				2119791-5 DEPRESSOR, WIRE			70
-				2119943-1 WASHER, SPACER			69
-				2119740-1 TAG IDENTIFICATION			67
-				2168078-1 SCREW, DRIVE, RH, RoHS, 2 x .188			66
-				2-18032-5 SCR, SET, FLT PNT, M5 X 20.0			61
-				5-18022-5 SCR, HEX HD CAP, M4 X 6.0			59
-				1338683-1 FEED PAWL			56
△				1-2168083-0 SCR, SKT HD CAP, RoHS, M4 X 10			53
-				18023-9 SCR, SKT HD CAP M4 X 6.0			49
-				1803583-9 APPLICATOR BASIC ASSEMBLY, SF			46
-				1803602-2 SCR, BHSC, RoHS (M8 X 40)			41
-				1803414-2 WIRE GUIDE			34
-				2079383-8 SCR, BHSC, RoHS (M4 X 16)			33
-				1-2844962-5 SPACER, CYLINDRICAL, STRIP GUIDE			30
-				1803771-3 PLATE, REAR STRIP GUIDE			29
-				2119943-1 WASHER, SPACER			28
-				22283-1 SPRING, COMPRESSION			27
-				356835-1 LEVER, DRAG RELEASE			26
-				240792-1 DRAG, TERMINAL			25
-				1633630-2 PLATE, STRIP GUIDE			24
-				980371-4 SCR, SKT HD SHLDR 5.0 DIA X 6.0			23
-				2168083-2 SCR, SKT HD CAP, RoHS, M4 X 8.0			21
-				1-18028-2 WASHER, FLAT, REG M4			20
-				2119533-1 STRIPPER, SIDE FEED			19
△				469465-4 STOP, WIRE			18
△				1803495-1 FLOATING SHEAR, REAR			17
-				2119862-1 SHEAR HOLDER, REAR			14
-				3-22280-3 SPRING, COMPRESSION			12
-				-			10
-				-			9
△				1 1803416-3 ANVIL, COMBINATION			8
-				-			7
-				1803494-1 DEPRESSOR SHEAR, REAR			6
-				1803203-1 BLOCK, FRONT DEPRESSOR			5
-				-			4
-				-			3
-				-			2
△				1 2-1633723-6 CRIMPER, WIRE 0			1

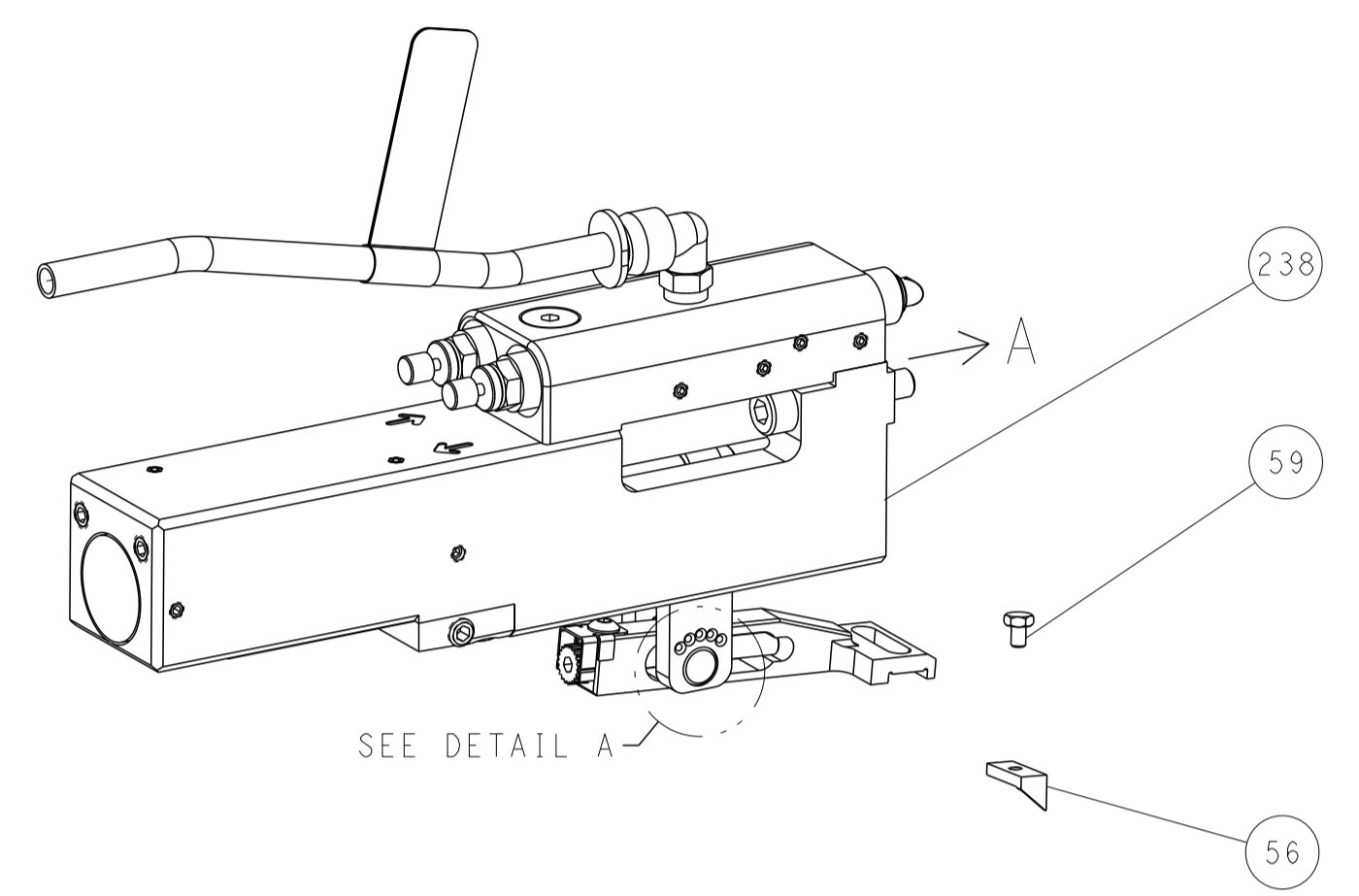
PACIFIC VERSION  
 Shown on sheets 3 of 4 & 4 of 4  
 (Atlantic version shown on sheets 1 of 4 & 2 of 4)

DIMENSIONS:	TOLERANCES UNLESS OTHERWISE SPECIFIED:	DATE	BY	APPV	DESCRIPTION	ITEM NO
mm	0 PLC ± 1 PLC ± 2 PLC ± 3 PLC ± 4 PLC ± ANGLES ± FINISH ±	21 JUL 2016	M. RILEY		TE Connectivity Harrisburg, PA 17105-3608	
		21 JUL 2016			Ocean Side Feed Applicator	
		21 JUL 2016			SIZE CAGE CODE DRAWING NO A1 00779 C=2836392	
					Customer Accessible Production Drawing	
					SCALE 1:2 SHEET 3 OF 4 REV G	

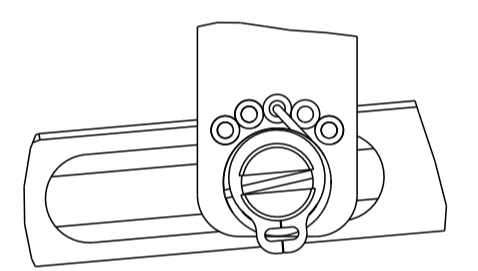
LOC	DIST	REVISIONS					
		P	LTN	DESCRIPTION	DATE	DWN	APVD
A	66	-	-	SEE SHEET 1	-	-	-

# FEED TYPE

## PNEUMATIC

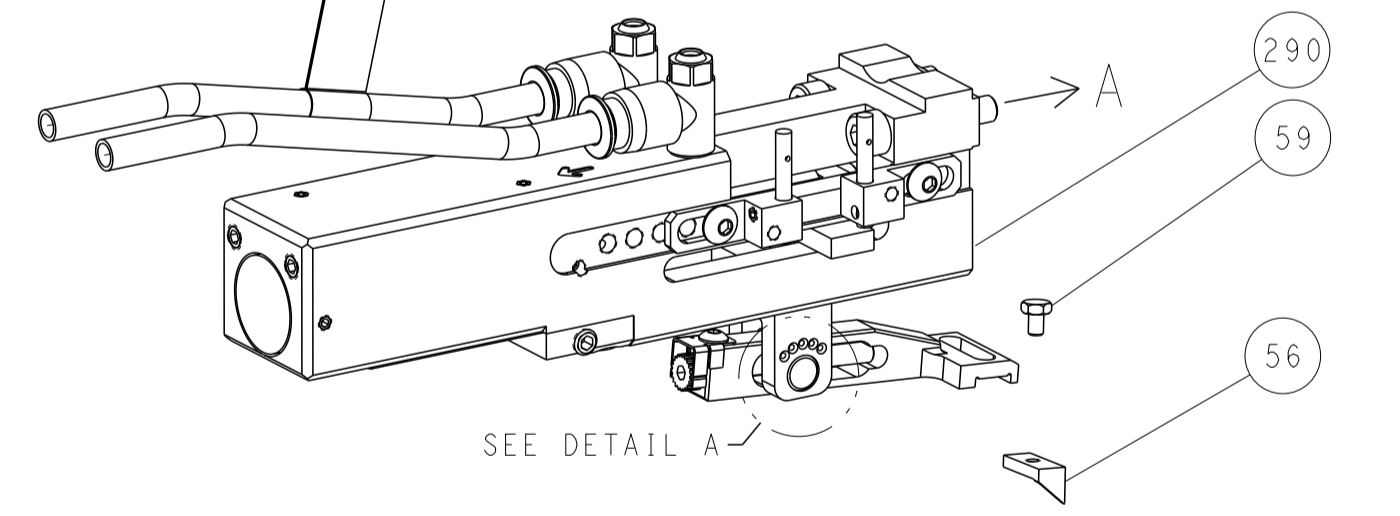


## FEED SPRING SETTING POSITION (SHOWN FROM REAR SIDE)

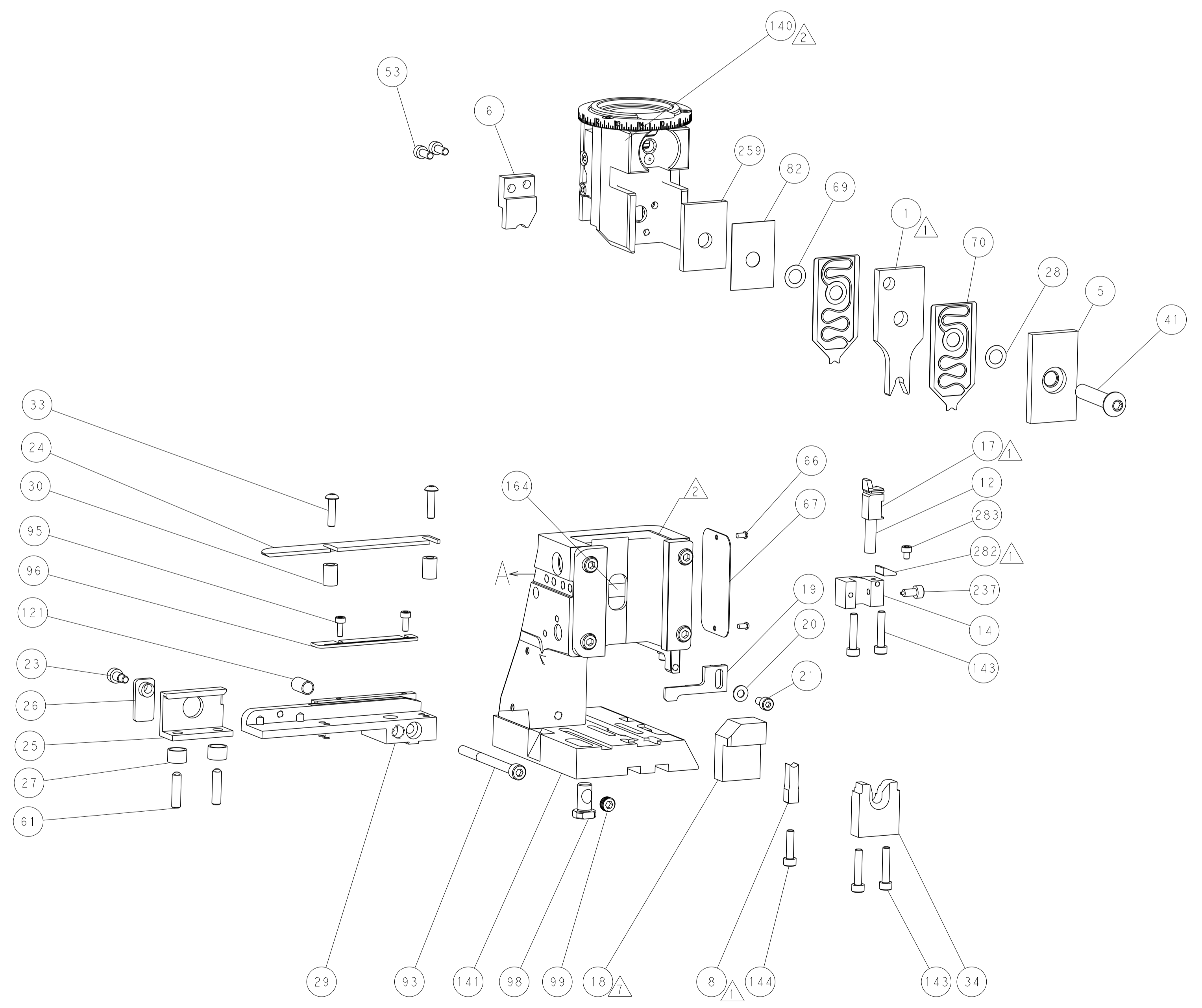
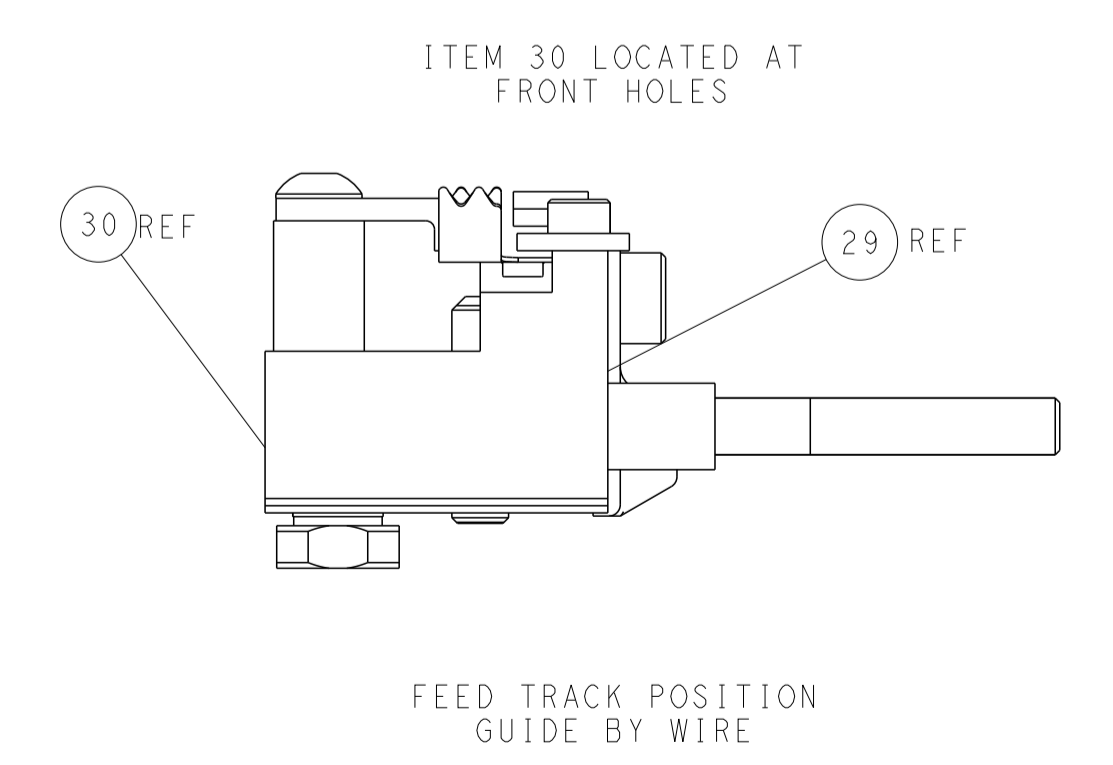
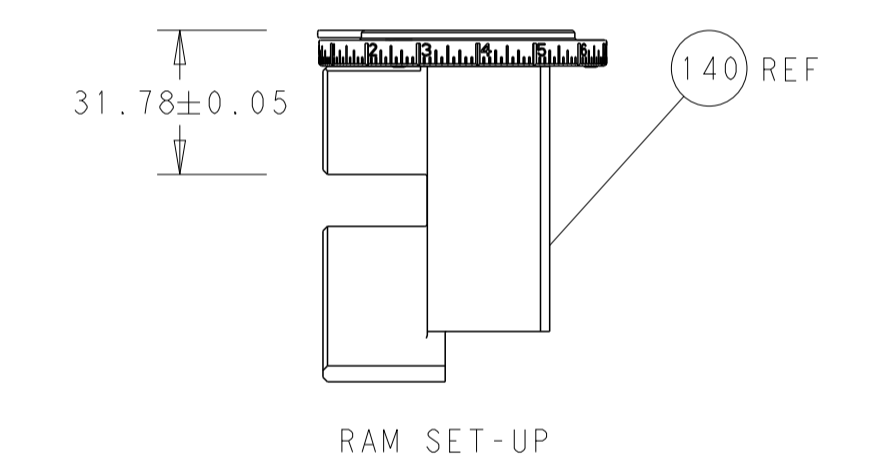
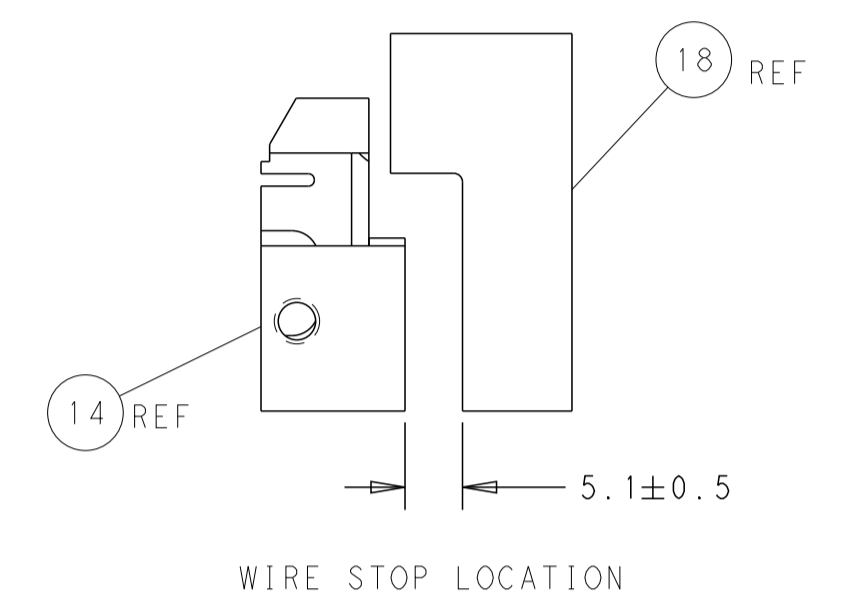
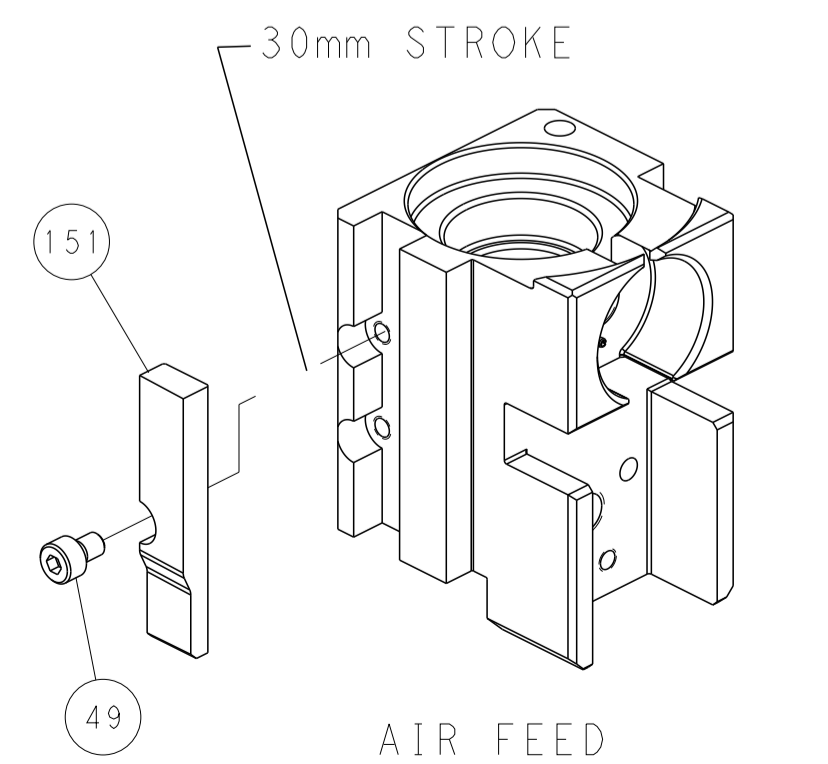


DETAIL A

## DOUBLE ACTING PNEUMATIC WITH SENSORS



## CAM POSITION



**PACIFIC VERSION**  
 Shown on sheets 3 of 4 & 4 of 4  
 (Atlantic version shown on sheets 1 of 4 & 2 of 4)

<small>THIS DRAWING IS UNPUBLISHED. RELEASED FOR PUBLICATION. ALL RIGHTS RESERVED. THIS DRAWING IS CONTROLLED DOCUMENT. THE INFORMATION CONTAINED HEREIN IS UNCLASSIFIED EXCEPT WHERE SHOWN OTHERWISE. THIS INFORMATION IS UNCLASSIFIED EXCEPT WHERE SHOWN OTHERWISE.</small>		DWN 12MAR2014 CHK 12MAR2014 APVD 12MAR2014	TE Connectivity Harrisburg, PA 17105-3608
DIMENSIONS: mm TOLERANCES UNLESS OTHERWISE SPECIFIED: 0 PLC ± 1 PLC ± 2 PLC ± 3 PLC ± 4 PLC ± ANGLES ± FINISH ±		NAME Ocean Side Feed Applicator PRODUCT SPEC APPLICATION SPEC SIZE CAGE CODE DRAWING NO WEIGHT A 00779 C=2836392	RESTRICTED TO SCALE 1:2 SHEET 4 OF 4 REV G
MATERIAL:		Customer Accessible Production Drawing	