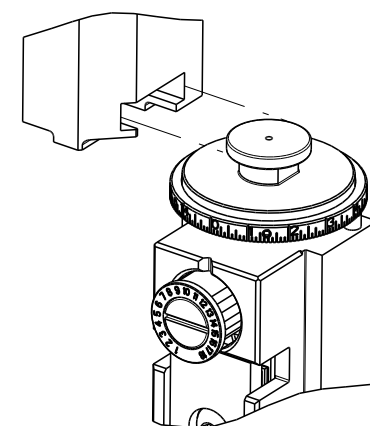


PART NUMBER	REVISION	DESCRIPTION	FEED TYPE
2836134-1	B	FINE CRIMP HEIGHT ADJUST	MECHANICAL
2836134-2	B	FINE CRIMP HEIGHT ADJUST	PNEUMATIC
7-2836134-1	B	MECHANICAL AND CRIMP TOOLING KIT	MECHANICAL
7-2836134-2	B	PNEUMATIC AND CRIMP TOOLING KIT	PNEUMATIC
7-2836134-7	A	CRIMP TOOLING KIT	-

ATLANTIC VERSION TERMINATOR INTERFACE ADAPTER

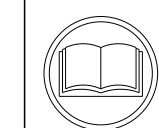


APPLICATOR DATA		
CRIMP	SIZE	TYPE
WIRE	2.54 mm [.100]	F
INSUL	3.68 mm [.145]	O

APPLICATOR INSTRUCTIONS 408-35042

TERMINAL DATA: AMPHENOL TERMINAL TE CRIMP SPECIFICATION			
TERMINAL NAME: C 146 M			
WIRE STRIP LENGTH	INSULATION DIAMETER RANGE		
3.68-4.44 mm [.145-.175 IN]	Ø2.34-3.12 mm [.092-.123 IN]		
TERMINAL APPLICATION SPECIFICATION	NONE		
TERMINALS APPLIED			
TE TERMINAL	AMPHENOL TERMINAL	TE TERMINAL	AMPHENOL TERMINAL
2113930-1	TN010160005	2113953-1	TN020160005
2113930-2	TN010160016	2113953-2	TN020160016

WIRE SIZE	CRIMP HEIGHT mm [INCH]	CRIMP HEIGHT REFERENCE SETTING
2.50mm2	1.98+/-0.05 [.078+/-0.002]	5.7
2mm ² OR 14 AWG	1.83+/-0.05 [.072+/-0.002]	7.4
1.50mm2	1.66+/-0.05 [.065+/-0.002]	9.0
16 AWG	1.60+/-0.05 [.063+/-0.002]	9.8



- 1 RECOMMENDED SPARE PARTS
- 2 REFER TO SUPPLIED INSTRUCTION SHEET FOR CLEANING, LUBRICATION AND STORAGE OF APPLICATOR.
- 3 APPLY PART NUMBER 2-23419-6 LOCTITE TO THREADS OF ITEM 242.
- 4 CRIMP HEIGHT REFERENCE SETTING WAS THE SETTING USED WHEN THE APPLICATOR WAS QUALIFIED AT THE FACTORY. ADJUSTMENT MAY BE NECESSARY WHEN RUNNING APPLICATOR IN THE FIELD.
- 5 TERMINAL LUBRICANT IS RECOMMENDED.
- 6. UNLESS SPECIFIED OTHERWISE TORQUE VALUES SHALL BE USED PER DOCUMENT, 101-35000.
- 7 MAY NEED TO ADJUST ITEM 29 WHEN SWITCHING TERMINALS.

***WARNING**
ON INSTALLATION, SET WIRE DISC TO CRIMP HEIGHT REFERENCE SETTING FOR LARGEST WIRE SIZE. CRIMP HEIGHT REFERENCE SETTINGS GREATER THAN THE VALUE SHOWN MAY CAUSE DAMAGE TO THE CRIMP TOOLING. REFER TO THE INSTRUCTION SHEET FOR PROPER SETUP AND ADJUSTMENTS.

LOC	DIST	REVISIONS					
A	66	P	LTN	DESCRIPTION	DATE	OWN	APVD
		1		ORIGINAL	10FEB2016	MEH	TE
		A		RELEASED	11MAR2016	MEH	TE
		B		ECR-21-002248	23FEB2021	TB	RK

-	2	2	2	2	2168083-1	SCR, SKT HD CAP, RoHS, M3 X 8.0	269	
-	1	1	1	1	1633782-3	FENCE	267	
-	1	-	1	-	2119641-1	FEED CAM, AIR FEED	248	
-	1	1	1	1	2119082-8	CAM, SNAIL, INSULATION ADJUSTMENT	244	
-	1	1	1	1	2079764-1	WASHER, WAVE SPRING, CREST-TO-CREST	243	
3	-	1	1	1	2119083-1	RETAINER, INSULATION DIAL	242	
-	1	1	1	1	7-18023-7	SCR, SKT HD CAP M3 X 4.0	241	
-	-	1	-	1	2119580-1	MECHANICAL FEED ASSEMBLY	239	
-	1	-	1	-	2844940-1	AIR FEED MODULE	238	
-	REF	REF	REF	REF	994970-2	COUNTER, MAGNETIC	164	
5	-	1	1	1	2119955-1	ASSY, LUBRICATOR, SIDE FEED	113	
-	1	1	1	1	2844908-1	SCREW, LOCKING	99	
-	1	1	1	1	2844907-1	POST, LOCKING	98	
-	1	1	1	1	455888-5	SPACER, CRIMPER	82	
-	1	1	1	1	1803607-3	DOCUMENTATION PACKAGE	71	
-	1	1	1	1	2119740-1	TAG, IDENTIFICATION	67	
-	2	2	2	2	2168078-1	SCREW, DRIVE, RH, RoHS, 2 x .188	66	
-	1	1	1	1	2168083-2	SCR, SKT HD CAP, RoHS, M4 X 8.0	60	
-	1	1	1	1	5-18022-5	SCR, HEX HD CAP, M4 X 6.0	59	
-	1	1	1	1	1338683-8	FEED PAWL	56	
-	4	4	4	4	2168083-3	SCR, SKT HD CAP, RoHS, M4 X 12.0	54	
-	2	2	2	2	1-2168083-0	SCR, SKT HD CAP, RoHS, M4 X 10	53	
-	1	1	1	1	5018030-1	NUT, HEX, REG, RoHS, M3	52	
-	1	1	1	1	811242-5	BUMPER, HOLD DOWN	51	
-	1	1	1	1	690753-2	SPACER, TONKER	50	
-	1	2	1	2	18023-9	SCR, SKT HD CAP M4 X 6.0	49	
-	-	1	-	1	2119652-1	FEED CAM, PRE FEED	48	
-	-	1	-	1	2119653-1	FEED CAM, POST FEED	47	
-	1	1	1	1	1803583-9	APPLICATOR BASIC ASSEMBLY, SF	46	
-	1	1	1	1	1803515-1	RAM ASSEMBLY, SF ATLANTIC	44	
-	1	1	1	1	1803602-1	SCR, BHSC, RoHS (M8 X 25)	41	
-	1	1	1	1	2-1752356-0	SUPPORT, TERMINAL	34	
-	2	2	2	2	2079383-5	SCR, BHSC, RoHS (M4 X 20)	33	
-	2	2	2	2	3-2844962-2	SPACER, CYLINDRICAL, STRIP GUIDE	30	
7	-	1	1	1	2844992-1	ASSEMBLY, STRIP GUIDE	29	
-	1	1	1	1	455888-3	SPACER, CRIMPER	28	
-	1	1	1	1	1320928-2	STRIP GUIDE	24	
-	1	1	1	1	2168083-2	SCR, SKT HD CAP, RoHS, M4 X 8.0	21	
-	2	2	2	2	1-18028-2	WASHER, FLAT, REG M4	20	
-	1	1	1	1	2119533-3	STRIPPER, SIDE FEED	19	
1	-	1	1	1	2119806-1	INSERT, SHEAR	13	
-	1	1	1	1	3-22280-3	SPRING, COMPRESSION	12	
-	1	1	1	1	1-356885-4	STOP, SHEAR	11	
1	-	1	1	1	2119805-1	SHEAR HOLDER, FRONT	10	
1	-	1	1	1	1803095-6	FLOATING SHEAR, FRONT	9	
1	1	2	2	1	1	3-1633922-7	ANVIL, COMBINATION	8
-	-	-	-	-	-	-	7	
-	-	-	-	-	-	-	6	
-	1	1	1	1	2119757-8	DEPRESSOR, SHEAR	5	
-	1	1	1	1	4-238011-5	BLOCK, CRIMPER SPACER	4	
1	1	2	2	1	1	9-1803018-8	CRIMPER, INSULATION O	3
-	1	1	1	1	455888-4	SPACER, CRIMPER	2	
1	1	2	2	1	1	1-456407-3	CRIMPER, WIRE PREMIUM	1

ATLANTIC VERSION
Shown on sheets 1 of 4 & 2 of 4
(Pacific version shown on sheets 3 of 4 & 4 of 4)

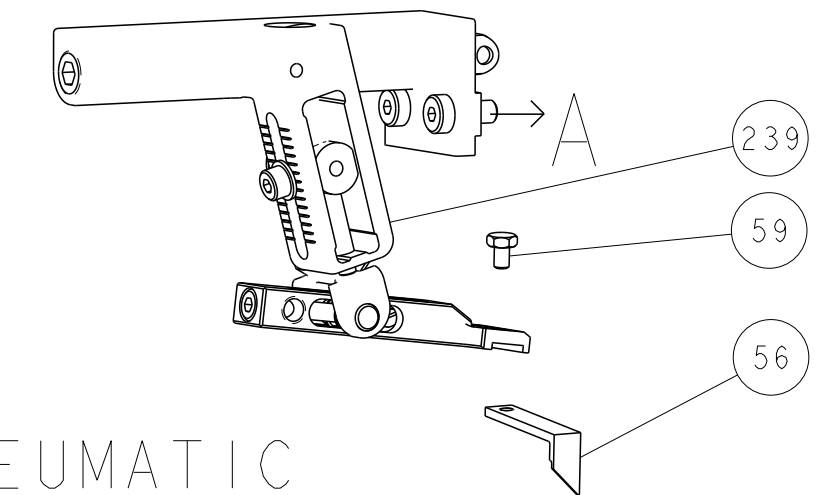
DIMENSIONS:		TOLERANCES UNLESS OTHERWISE SPECIFIED:		MATERIAL:		FINISH:	
mm	0 PLC ±	1 PLC ±	2 PLC ±	3 PLC ±	4 PLC ±	ANGLES ±	

OWN	CHK	APVD	DATE	NAME	SIZE	CAGE CODE	DRAWING NO	RESTRICTED TO
M. HERR	M. HERR	M. HERR	10FEB2016	Ocean Side Feed Applicator	A1	00779	2836134	

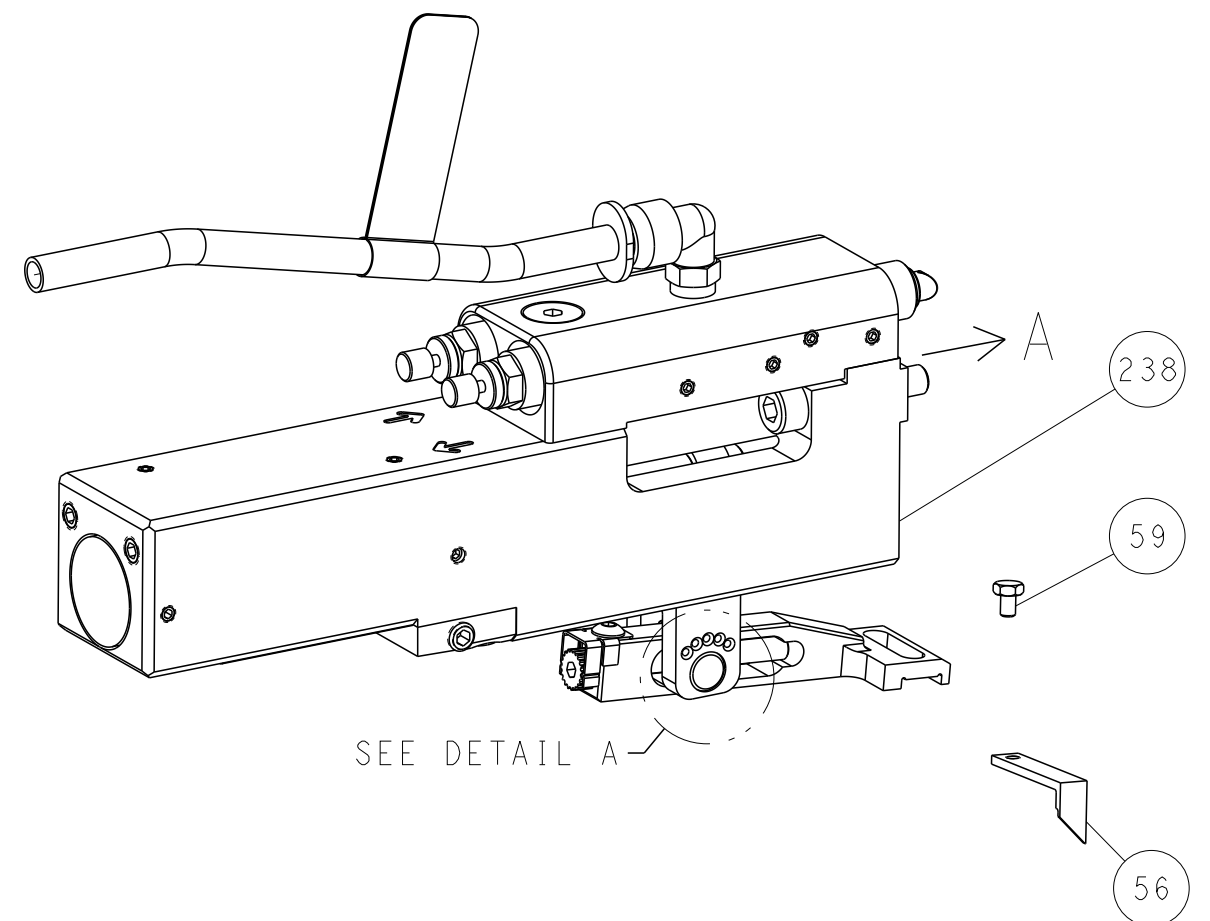
CUSTOMER DRAWING SCALE 1:2 SHEET 1 OF 4 REV B

LOC	DIST	REV	DATE	BY	APPV
A	66				
REVISIONS			DATE	BY	APPV
DESCRIPTION					
SEE SHEET 1					

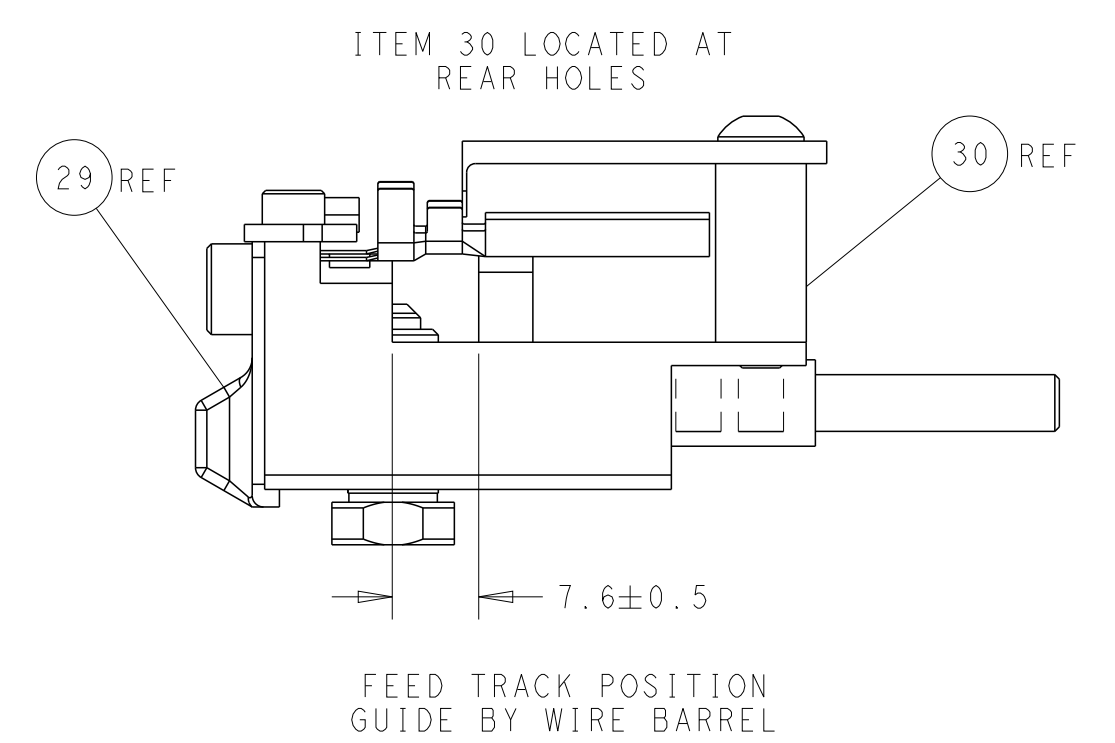
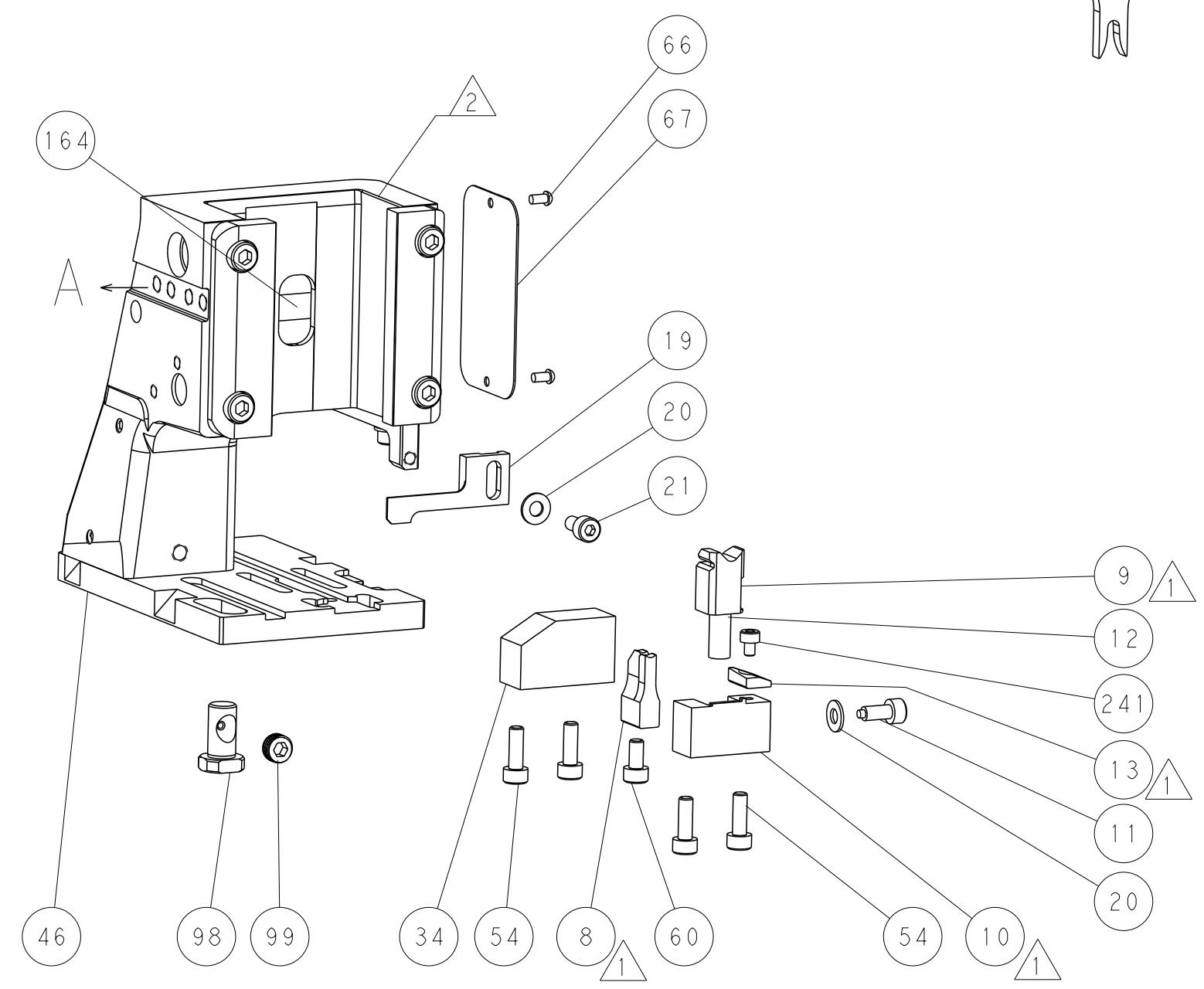
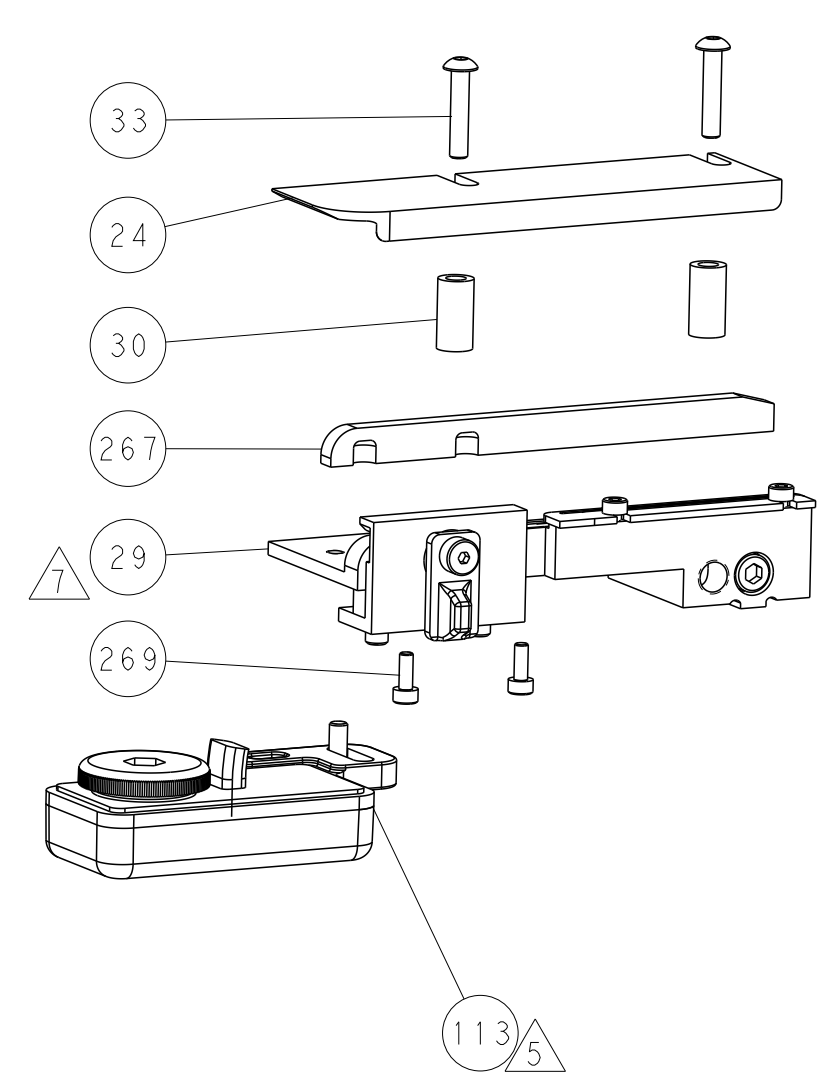
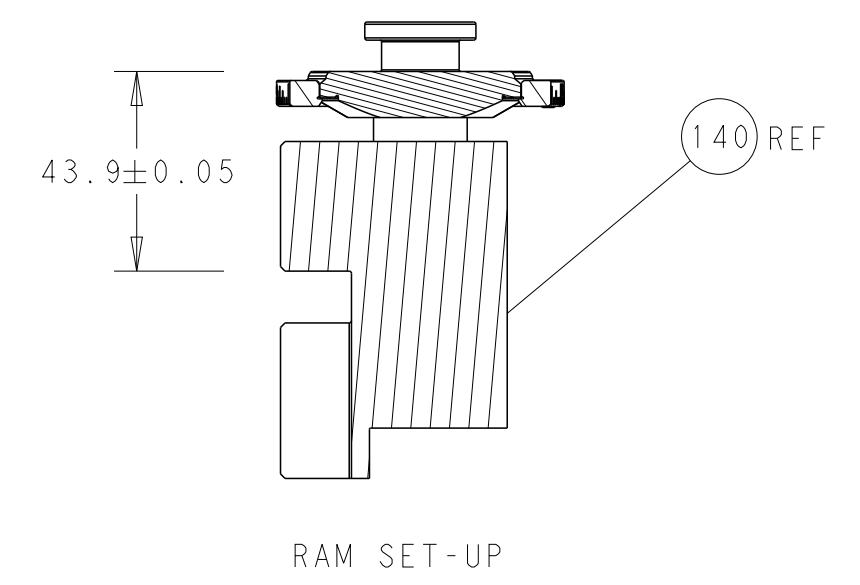
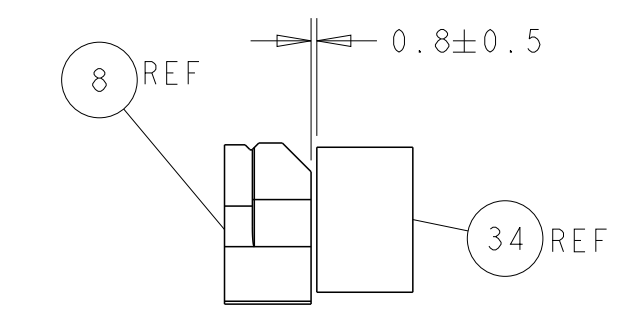
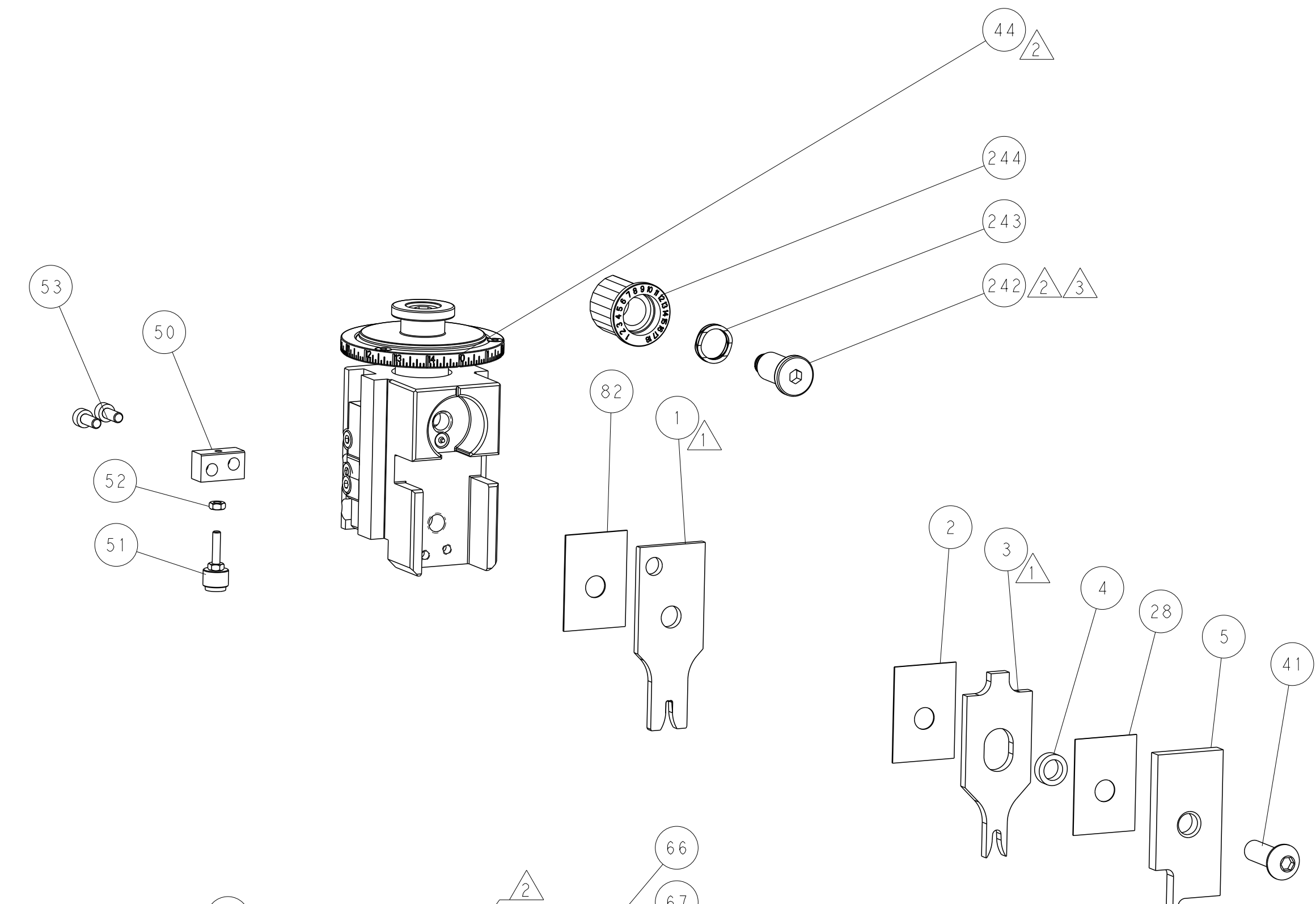
FEED TYPE MECHANICAL



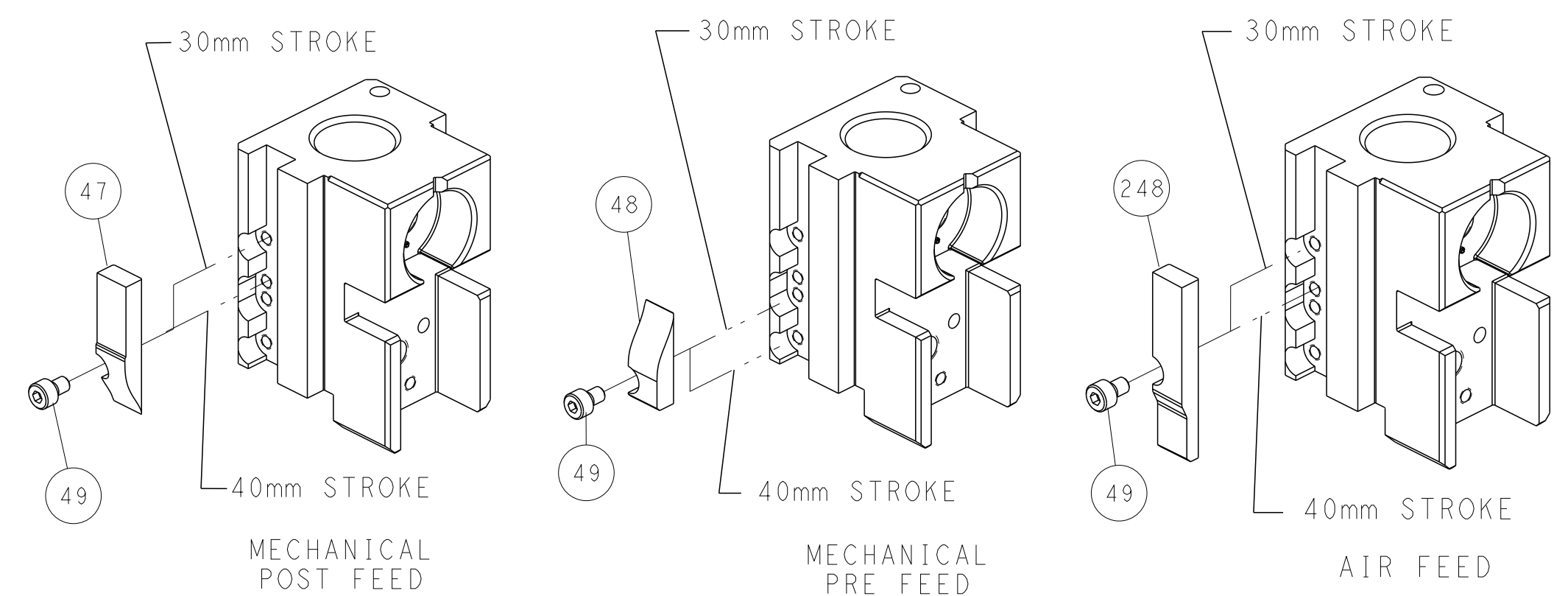
PNEUMATIC



FEED SPRING SETTING POSITION (SHOWN FROM REAR SIDE)



CAM POSITIONS



ATLANTIC VERSION
 Shown on sheets 1 of 4 & 2 of 4
 (Pacific version shown on sheets 3 of 4 & 4 of 4)

DIMENSIONS:		TOLERANCES UNLESS OTHERWISE SPECIFIED:		OWN	M_HERR	10FEB2016	TE Connectivity Harrisburg, PA 17105-3608
mm	0 PLC	±		CHK	M_HERR	10FEB2016	
	1 PLC	±		APPV	M_HERR	10FEB2016	NAME
	2 PLC	±		PRODUCT SPEC			Ocean Side Feed
	3 PLC	±		APPLICATION SPEC			Applicator
	4 PLC	±		MATERIAL			SIZE
	ANGLES	±		FINISH			CAGE CODE
				WEIGHT			DRAWING NO
				CUSTOMER DRAWING			RESTRICTED TO
				SCALE			1:2
				SHEET			2 of 4
				REV			B

8	7	6	5	4	3	2	1
THIS DRAWING IS UNPUBLISHED.		RELEASED FOR PUBLICATION		20			
COPYRIGHT 2016 BY TYCO ELECTRONICS CORPORATION. ALL RIGHTS RESERVED.							
PART NUMBER	REVISION	DESCRIPTION	FEED TYPE				
2-2836134-1	B	FINE CRIMP HEIGHT ADJUST	MECHANICAL				
2-2836134-2	B	FINE CRIMP HEIGHT ADJUST	PNEUMATIC				
7-2836134-7	A	CRIMP TOOLING KIT	-				

PACIFIC VERSION TERMINATOR
INTERFACE ADAPTER



APPLICATOR DATA		
CRIMP	SIZE	TYPE
WIRE	2.54 mm [.100]	F
INSUL	3.68 mm [.145]	O
APPLICATOR INSTRUCTIONS 408-35042		

TERMINAL DATA: AMPHENOL TERMINAL TE CRIMP SPECIFICATION			
TERMINAL NAME: C 146 M			
WIRE STRIP LENGTH 3.68-4.44 mm [.145-.175 IN]		INSULATION DIAMETER RANGE Ø2.34-3.12 mm [.092-.123 IN]	
TERMINAL APPLICATION SPECIFICATION NONE	-	-	-
TERMINALS APPLIED			
TE TERMINAL	AMPHENOL TERMINAL	TE TERMINAL	AMPHENOL TERMINAL
2113930-1	TN010160005	2113953-1	TN020160005
2113930-2	TN010160016	2113953-2	TN020160016

WIRE SIZE	CRIMP HEIGHT mm [INCH]	CRIMP HEIGHT REFERENCE SETTING
2.50mm2	1.98+/-0.05 [.078+/-0.002]	5.7
2mm ² OR 14 AWG	1.83+/-0.05 [.072+/-0.002]	7.4
1.50mm2	1.66+/-0.05 [.065+/-0.002]	9.0
16 AWG	1.60+/-0.05 [.063+/-0.002]	9.8

- RECOMMENDED SPARE PARTS
- REFER TO SUPPLIED INSTRUCTION SHEET FOR CLEANING, LUBRICATION AND STORAGE OF APPLICATOR.
- APPLY PART NUMBER 2-23419-6 LOCTITE TO THREADS OF ITEM 242.
- CRIMP HEIGHT REFERENCE SETTING WAS THE SETTING USED WHEN THE APPLICATOR WAS QUALIFIED AT THE FACTORY. ADJUSTMENT MAY BE NECESSARY WHEN RUNNING APPLICATOR IN THE FIELD.
- TERMINAL LUBRICANT IS RECOMMENDED.
- 6. UNLESS SPECIFIED OTHERWISE TORQUE VALUES SHALL BE USED PER DOCUMENT, 101-35000.
- MAY NEED TO ADJUST ITEM 29 WHEN SWITCHING TERMINALS.

*WARNING
ON INSTALLATION, SET WIRE DISC TO CRIMP HEIGHT REFERENCE SETTING FOR LARGEST WIRE SIZE. CRIMP HEIGHT REFERENCE SETTINGS GREATER THAN THE VALUE SHOWN MAY CAUSE DAMAGE TO THE CRIMP TOOLING. REFER TO THE INSTRUCTION SHEET FOR PROPER SETUP AND ADJUSTMENTS.

LOC	DIST	REV	DATE	BY	APPV
A	66	-	-	-	-

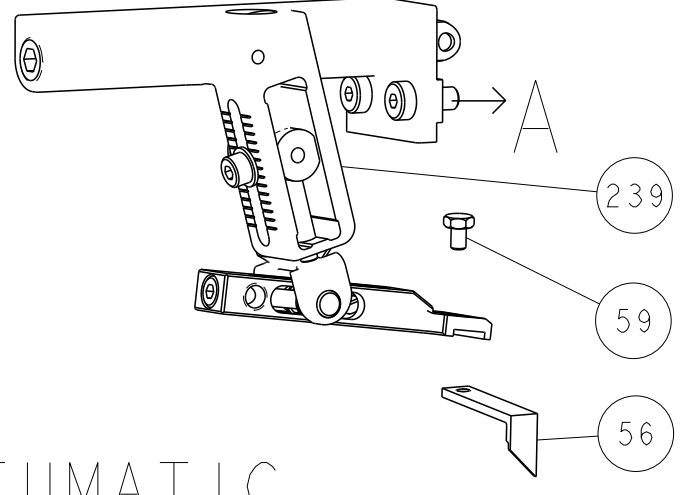
REVISIONS					
REV	DATE	BY	DESCRIPTION	DATE	APPV
-	-	-	SEE SHEET 1	-	-
-	2	2	2168083-1 SCR, SKT HD CAP, RoHS, M3 X 8.0	269	
-	1	1	1633782-3 FENCE	267	
-	1	1	2119082-8 CAM, SNAIL, INSULATION ADJUSTMENT	244	
-	1	1	2079764-1 WASHER, WAVE SPRING, CREST-TO-CREST	243	
	-	1	2119083-1 RETAINER, INSULATION DIAL	242	
-	1	1	7-18023-7 SCR, SKT HD CAP M3 X 4.0	241	
-	-	1	2119580-1 MECHANICAL FEED ASSEMBLY	239	
-	1	-	2844940-1 AIR FEED MODULE	238	
-	REF	REF	994970-2 COUNTER, MAGNETIC	164	
-	1	-	2119641-2 FEED CAM, AIR FEED	151	
-	1	1	2168083-8 SCR, SKT HD CAP, RoHS, M4 X 16	144	
-	4	4	2168083-9 SCR, SKT HD CAP, RoHS, M4 X 20	143	
-	-	1	2119653-2 FEED CAM, POST FEED	142	
-	1	1	1-1803583-0 APPLICATOR BASIC ASSEMBLY, SF	141	
-	1	1	1803516-1 RAM ASSEMBLY, SF PACIFIC	140	
	-	1	2119955-1 ASSY, LUBRICATOR, SIDE FEED	113	
-	1	1	2844908-1 SCREW, LOCKING	99	
-	1	1	2844907-1 POST, LOCKING	98	
-	1	1	455888-5 SPACER, CRIMPER	82	
-	1	1	1803607-3 DOCUMENTATION PACKAGE	71	
-	1	1	2119740-1 TAG, IDENTIFICATION	67	
-	2	2	2168078-1 SCREW, DRIVE, RH, RoHS, 2 x .188	66	
-	1	1	5-18022-5 SCR, HEX HD CAP, M4 X 6.0	59	
-	1	1	1338683-8 FEED PAWL	56	
-	2	2	1-2168083-0 SCR, SKT HD CAP, RoHS, M4 X 10	53	
-	1	1	5018030-1 NUT, HEX, REG, RoHS, M3	52	
-	1	1	811242-5 BUMPER, HOLD DOWN	51	
-	1	1	690753-2 SPACER, TONKER	50	
-	1	2	18023-9 SCR, SKT HD CAP M4 X 6.0	49	
-	-	1	2119652-1 FEED CAM, PRE FEED	48	
-	1	1	1803602-1 SCR, BHSC, RoHS (M8 X 25)	41	
-	1	1	2-1752356-0 SUPPORT, TERMINAL	34	
-	2	2	2079383-5 SCR, BHSC, RoHS (M4 X 20)	33	
-	2	2	3-2844962-2 SPACER, CYLINDRICAL, STRIP GUIDE	30	
	-	1	2844992-1 ASSEMBLY, STRIP GUIDE	29	
-	1	1	455888-3 SPACER, CRIMPER	28	
-	1	1	1320928-2 STRIP GUIDE	24	
-	1	1	2168083-2 SCR, SKT HD CAP, RoHS, M4 X 8.0	21	
-	2	2	1-18028-2 WASHER, FLAT, REG M4	20	
-	1	1	2119533-3 STRIPPER, SIDE FEED	19	
	-	1	2119806-1 INSERT, SHEAR	13	
-	1	1	3-22280-3 SPRING, COMPRESSION	12	
-	1	1	1-356885-4 STOP, SHEAR	11	
	-	1	2119805-1 SHEAR HOLDER, FRONT	10	
	-	1	1803095-6 FLOATING SHEAR, FRONT	9	
	1	1	1-1633922-7 ANVIL, COMBINATION	8	
-	-	-	-	7	
-	-	-	-	6	
-	1	1	2119757-8 DEPRESSOR, SHEAR	5	
-	1	1	4-238011-5 BLOCK, CRIMPER SPACER	4	
	1	1	9-1803018-8 CRIMPER, INSULATION O	3	
-	1	1	455888-4 SPACER, CRIMPER	2	
	1	1	1-456407-3 CRIMPER, WIRE PREMIUM	1	

PACIFIC VERSION
Shown on sheets 3 of 4 & 4 of 4
(Atlantic version shown on sheets 1 of 4 & 2 of 4)

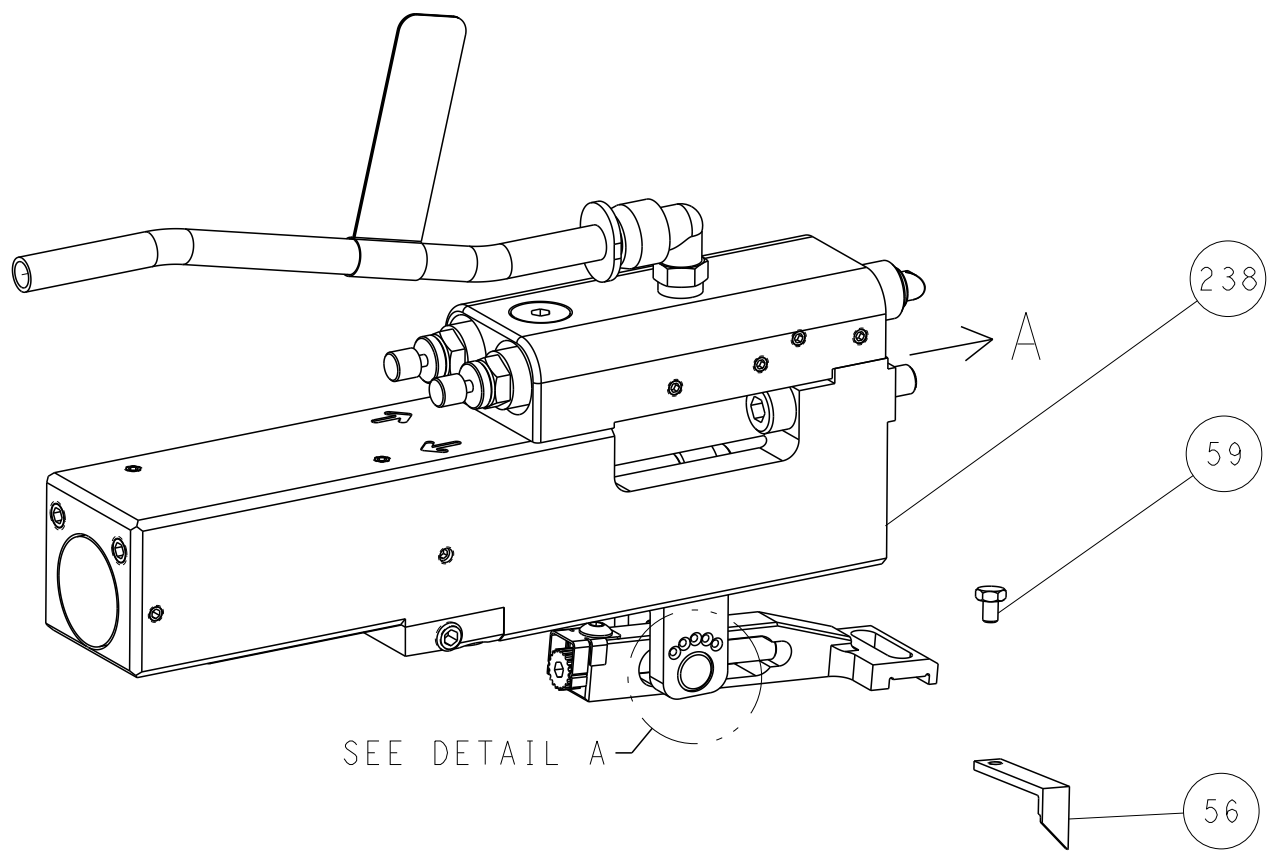
DIMENSIONS:		TOLERANCES UNLESS OTHERWISE SPECIFIED:		DWG: M_HERR 10FEB2016		CHK: M_HERR 10FEB2016		APVD: M_HERR 10FEB2016		NAME: Ocean Side Feed Applicator	
mm	0 PLC ±	1 PLC ±	2 PLC ±	3 PLC ±	4 PLC ±	ANGLES ±	FINISH	SIZE: A1	CAGE CODE: 00779	DRAWING NO: C=2836134	RESTRICTED TO: B
MATERIAL:		FINISH:		WEIGHT:		CUSTOMER DRAWING		SCALE: 1:2		SHEET 3 OF 4	

LOC	DIST	REVISIONS					
A	66	P	LTN	DESCRIPTION	DATE	OWN	APVD
		-		SEE SHEET 1			

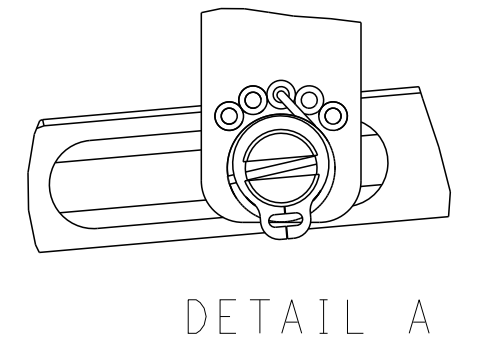
FEED TYPE MECHANICAL



PNEUMATIC

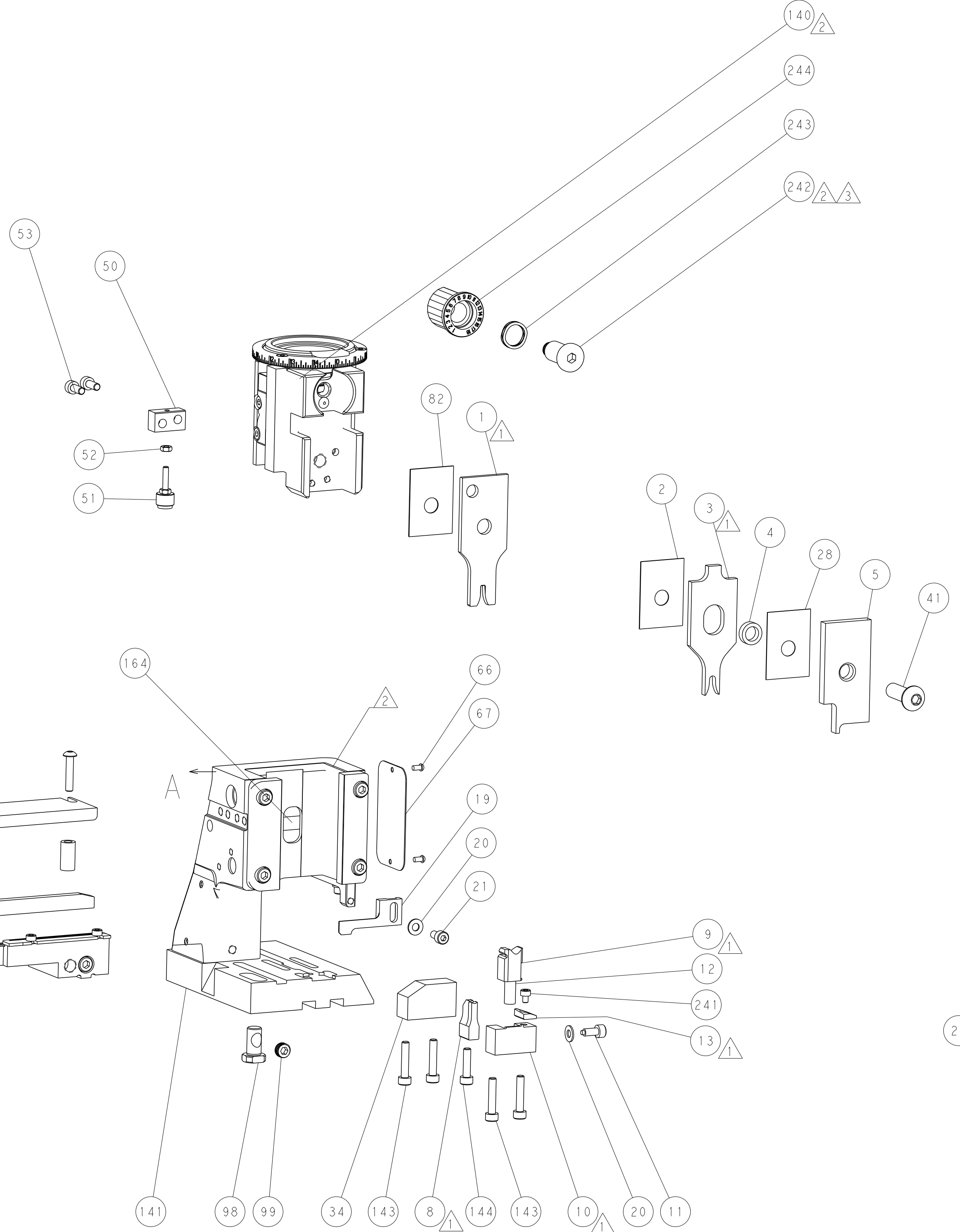
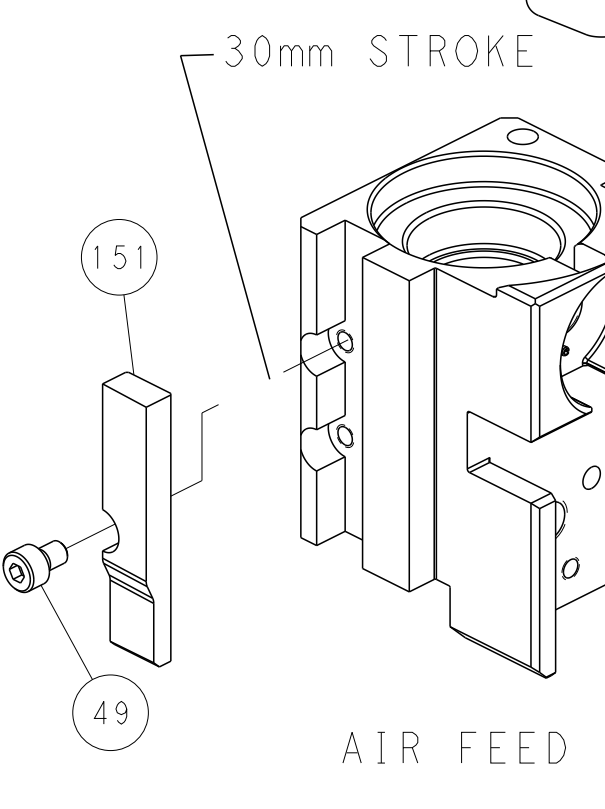
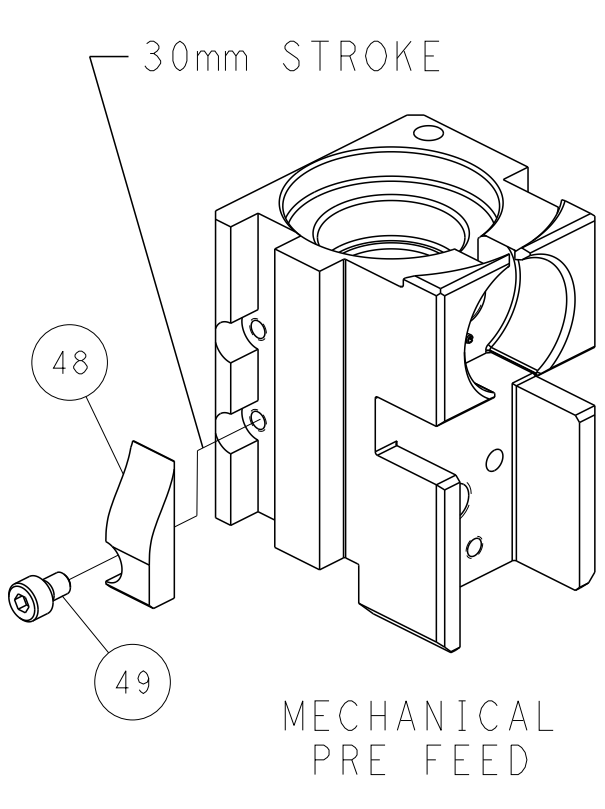
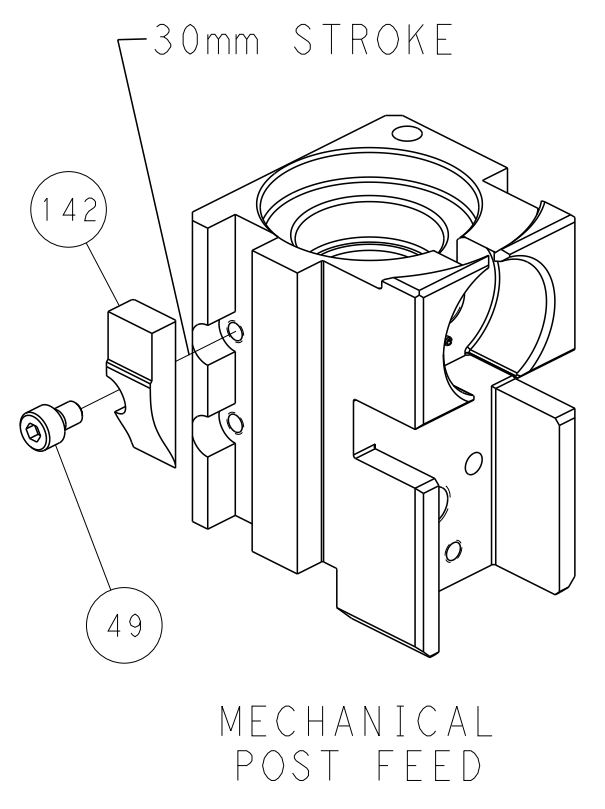


FEED SPRING SETTING POSITION (SHOWN FROM REAR SIDE)

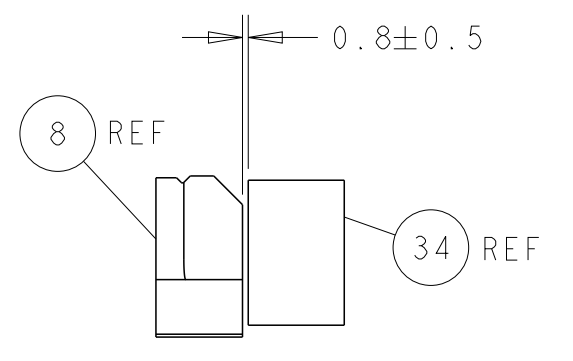


DETAIL A

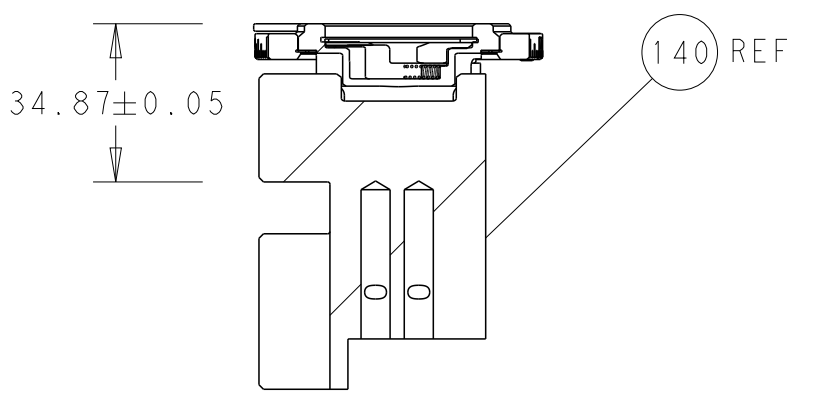
CAM POSITIONS



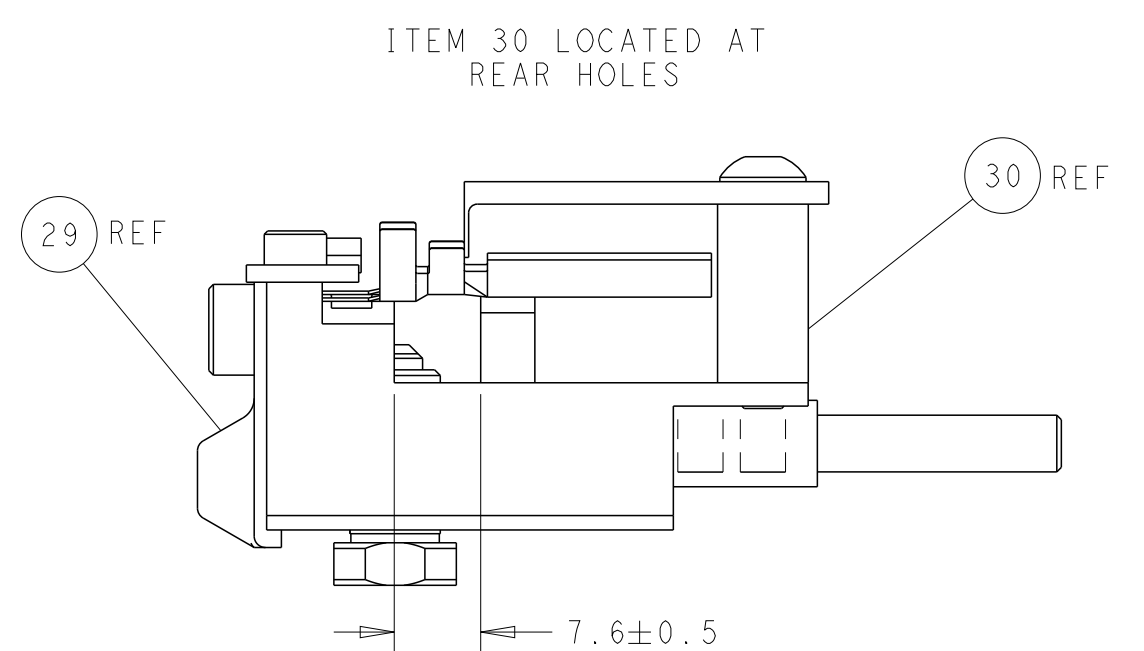
PACIFIC VERSION
 Shown on sheets 3 of 4 & 4 of 4
 (Atlantic version shown on sheets 1 of 4 & 2 of 4)



TERMINAL SUPPORT LOCATION



RAM SET-UP



FEED TRACK POSITION
GUIDE BY WIRE BARREL

DIMENSIONS: mm 		TOLERANCES UNLESS OTHERWISE SPECIFIED: 0 PLC ± 1 PLC ± 2 PLC ± 3 PLC ± 4 PLC ± ANGLES ± FINISH ±		DWN M_HERR 10FEB2016 CHK M_HERR 10FEB2016 APVD M_HERR 10FEB2016 PRODUCT SPEC APPLICATION SPEC WEIGHT CUSTOMER DRAWING		NAME Ocean Side Feed Applicator SIZE CAGE CODE DRAWING NO A1 00779 C=2836134 SCALE 1:2 SHEET 4 OF 4 REV B	
MATERIAL:				RESTRICTED TO			