

APPLICATOR STYLE CONVERSION CHART. Table with columns: PART NUMBER, REVISION, DESCRIPTION, FEED TYPE, CONVERT TO, PART NUMBERS REQUIRED.

APPLICATOR DATA. Table with columns: CRIMP, SIZE, TYPE. Includes WIRE (1.75 mm [.069]) and INSUL (3.40 mm [.134]).

TERMINAL DATA: KUM TERMINAL KUM CRIMP SPECIFICATION. Includes WIRE STRIP LENGTH and INSULATION DIAMETER RANGE.

TERMINALS APPLIED. Table with columns: TE TERMINAL, KUM TERMINAL, TE SEAL, KUM SEAL, CABLE DIAMETER.

WIRE SIZE, CRIMP HEIGHT mm [INCH], CRIMP HEIGHT REFERENCE SETTING. Table with rows for AESXFX 0.5mm² and AESXFX 0.3mm².

- 1 RECOMMENDED SPARE PARTS
2 GREASE BEARING SURFACES LIGHTLY
3 LUBRICATE DAILY PER THE APPLICATOR INSTRUCTION SHEET SUPPLIED WITH THE APPLICATOR.
4 APPLICATOR SPECIFIC DATA TO BE ENTERED INTO BLANK MEMORY CHIP AT ASSEMBLY...

*WARNING
ON INSTALLATION, SET WIRE DISC, ITEM 40 TO LARGEST WIRE SIZE SETTING. USE OF SETTINGS BELOW MINIMUM REQUIRED CRIMP HEIGHT SETTING WILL CAUSE DAMAGE TO CRIMP TOOLING.

Table with columns: PART NO, DESCRIPTION, ITEM NO. Includes entries for APPLICATOR SHIM PACK and O-RING.

ATLANTIC VERSION
Shown on sheets 1 of 4 & 2 of 4
(Pacific version shown on sheets 3 of 4 & 4 of 4)

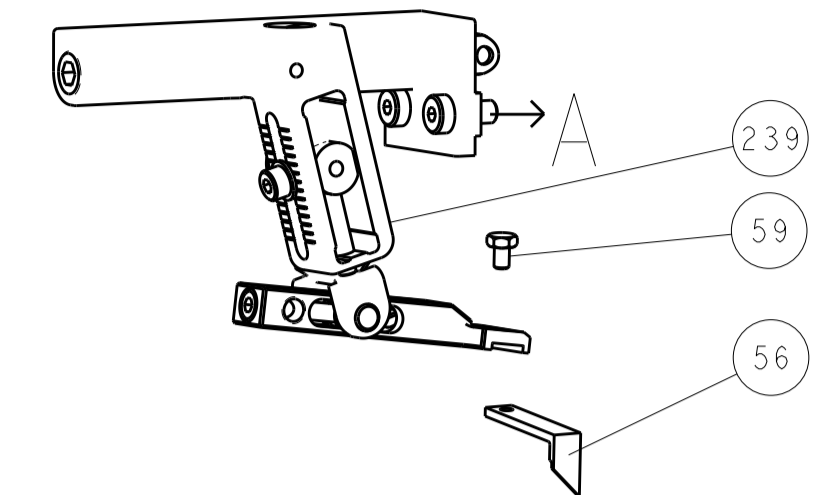
SET UP GAUGE 2119599-1. Table with columns: LOC, DIST, REVISIONS, DATE, DWN, APVD.

Large table with columns: Item No, Description, Quantity, Part No, etc. Lists various components like PUSH ROD, BUSHING, FEED CAM, etc.

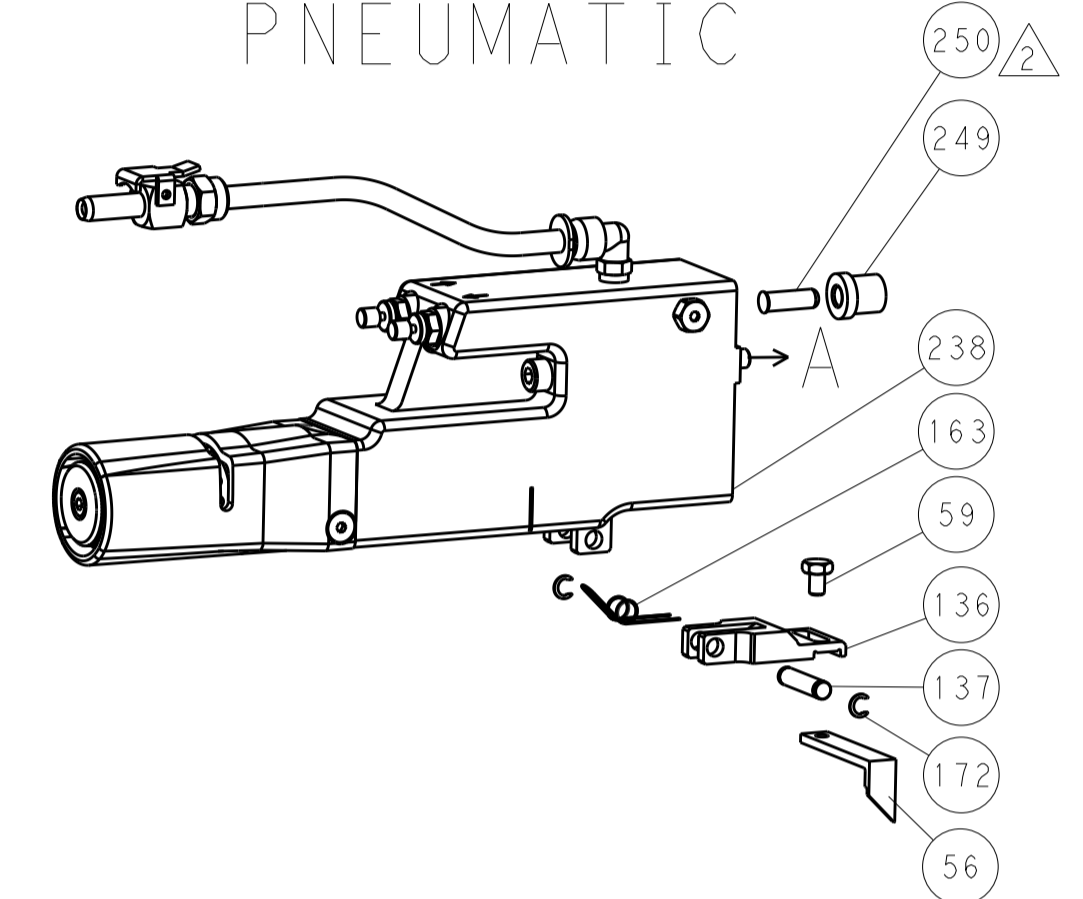
Customer Accessible Production Drawing. Includes dimensions, tolerances, materials, and drawing information like DATE, DRAWING NO, SCALE.

LOC	DIST	REV	DATE	BY	APP'D
A	66				

FEED TYPE MECHANICAL



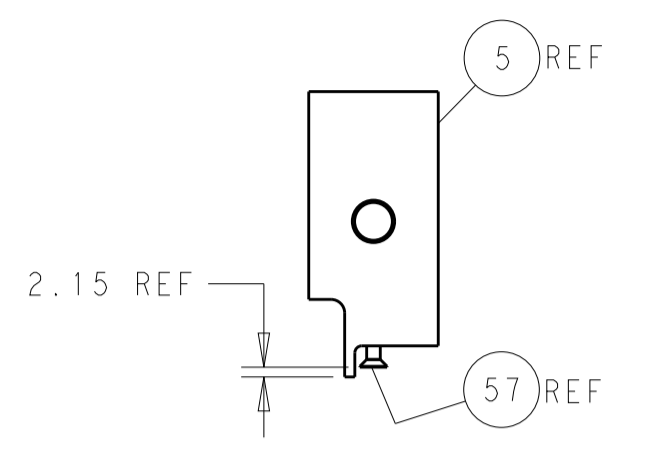
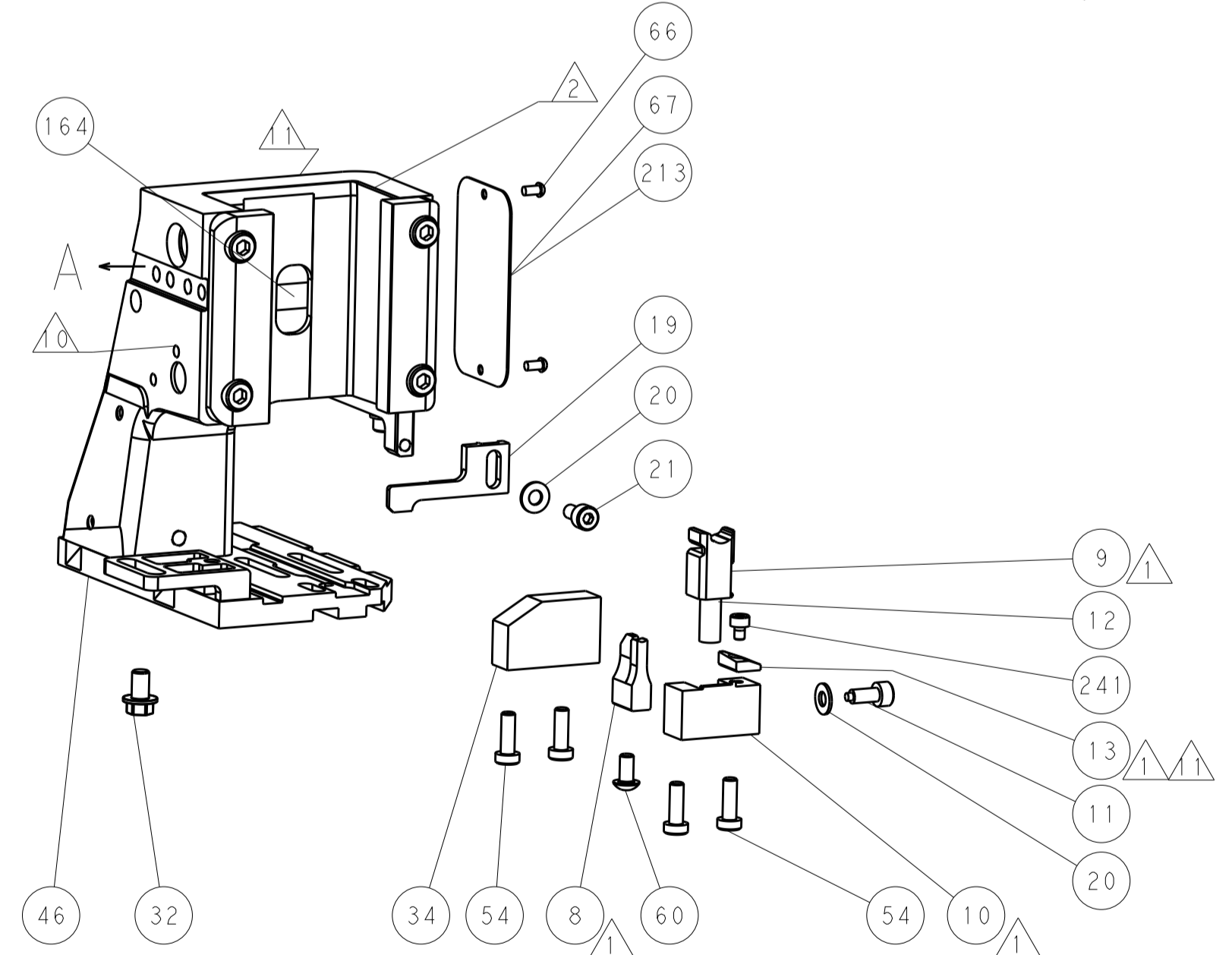
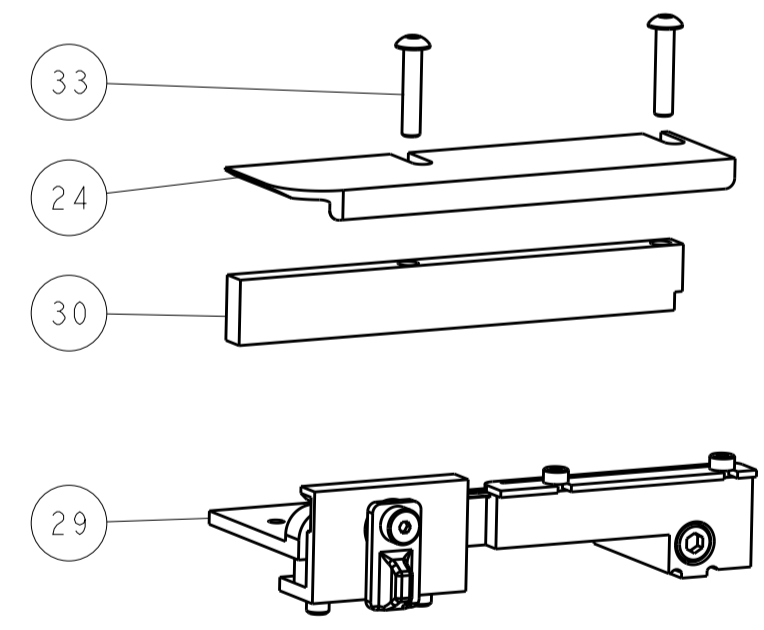
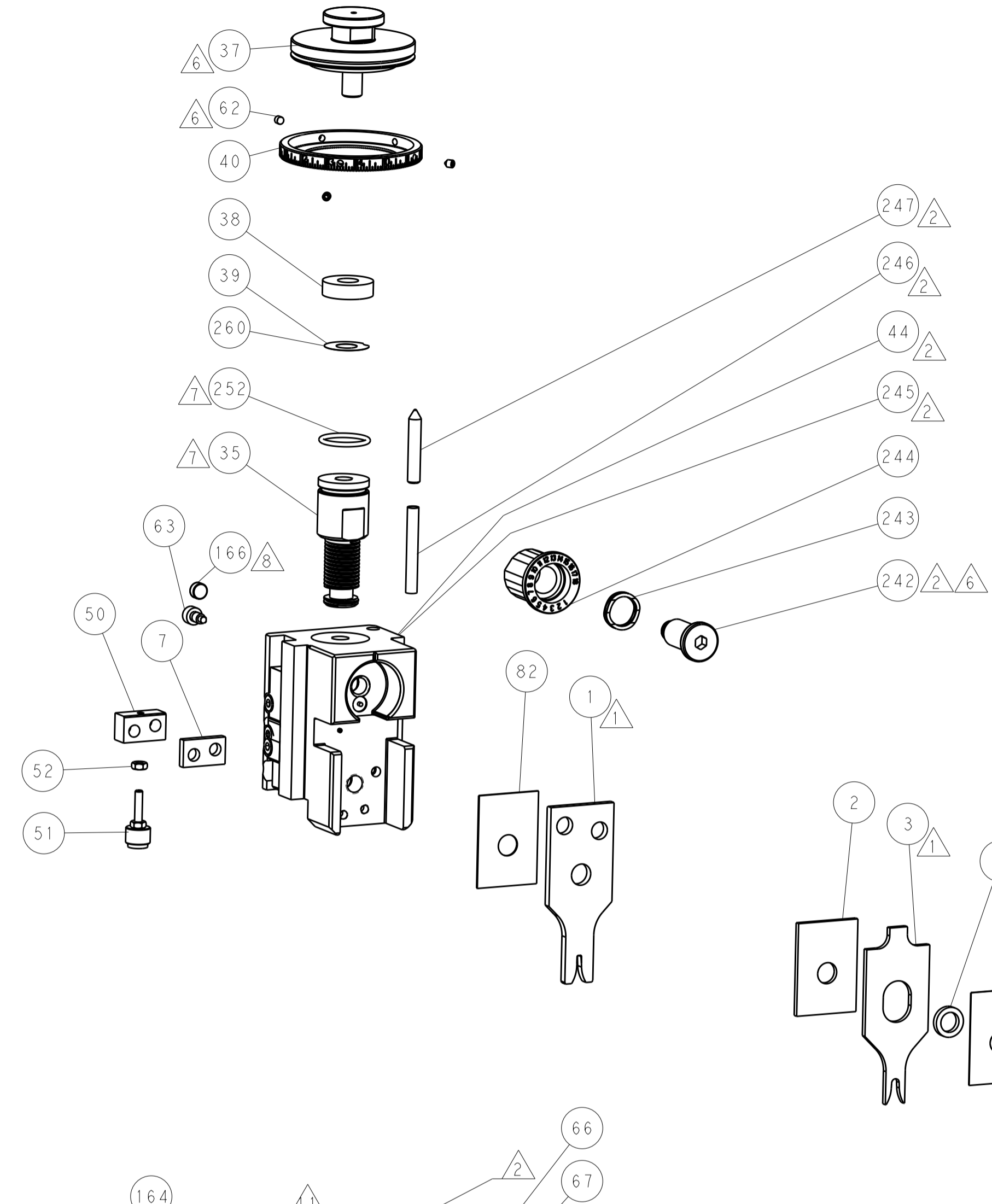
PNEUMATIC



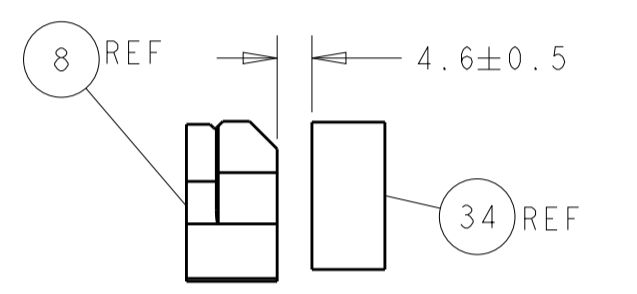
SERVO LATCH PLATE



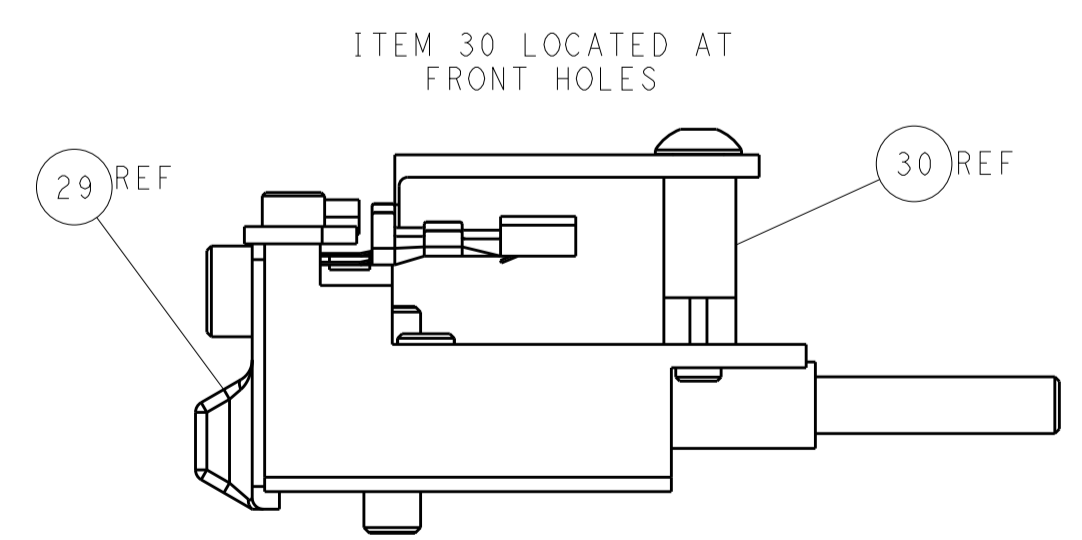
CAM POSITIONS



SHEAR DEPRESSOR DETAIL



TERMINAL SUPPORT LOCATION



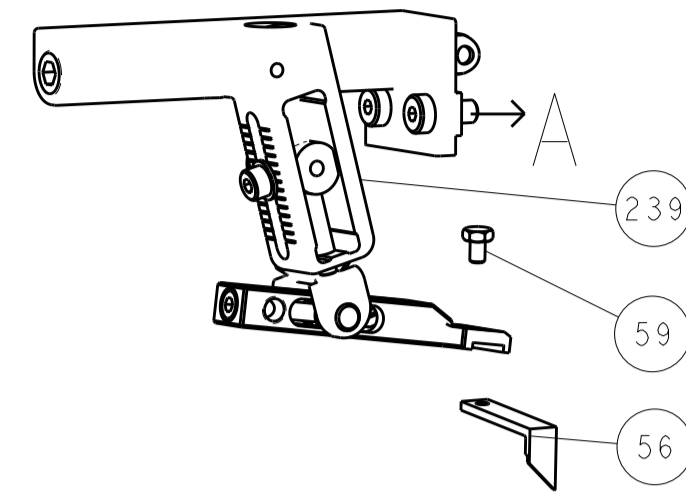
FEED TRACK POSITION GUIDE BY INSULATION BARREL

ATLANTIC VERSION
 Shown on sheets 1 of 4 & 2 of 4
 (Pacific version shown on sheets 3 of 4 & 4 of 4)

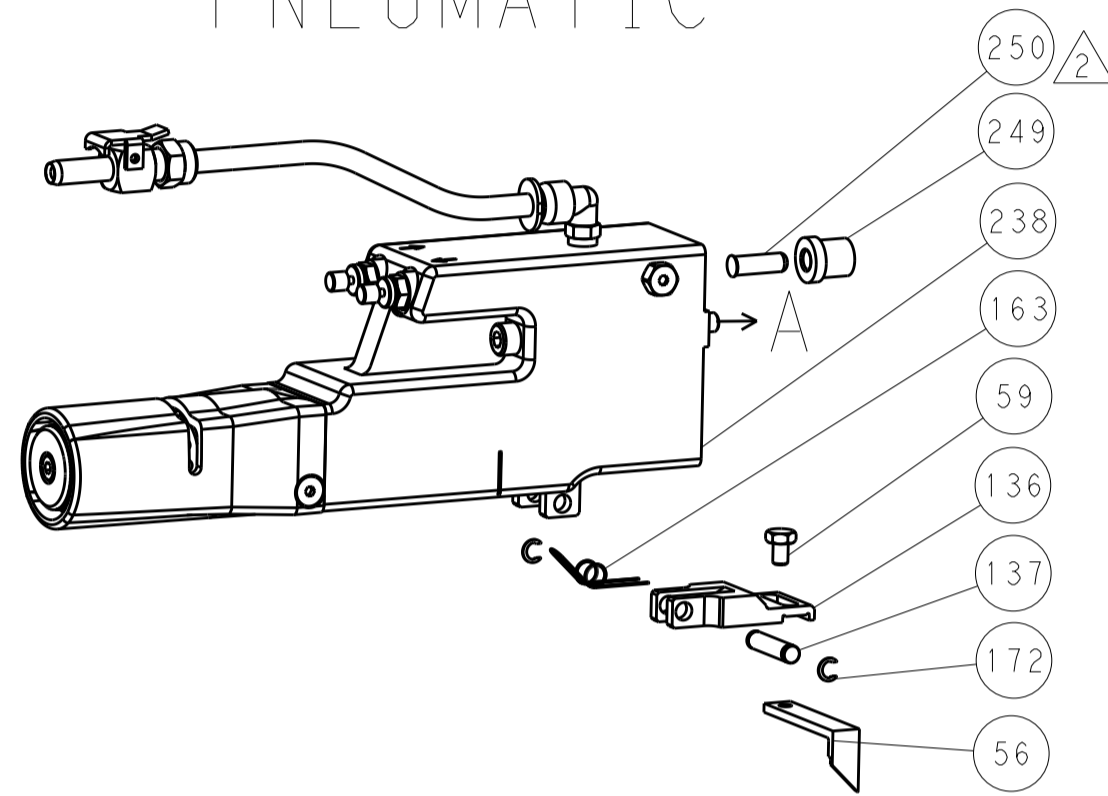
DIMENSIONS:		TOLERANCES UNLESS OTHERWISE SPECIFIED:		DWG: BOB_HIGMAN 30SEPT2015		TE Connectivity	
mm	0 PLC	±		CHK: G_BAILLEY 30SEPT2015	Harrisburg, PA 17105-3608		
	1 PLC	±		APP'D: G_BAILLEY 30SEPT2015	NAME: Ocean Side Feed		
	2 PLC	±			Product Spec		
	3 PLC	±			APPLICATION SPEC		
	4 PLC	±			SIZE: CAGE CODE: DRAWING NO: RESTRICTED TO		
	ANGLES	±			A1 00779 ©=2836020		
MATERIAL:	FINISH:	WEIGHT:	SCALE:	Customer Accessible Production Drawing		SHEET 2 OF 4 REV A	

LOC		DIST		REVISIONS			
A	66	P	LTM	DESCRIPTION	DATE	OWN	APVD
		-	-	SEE SHEET 1	-	-	-

FEED TYPE MECHANICAL



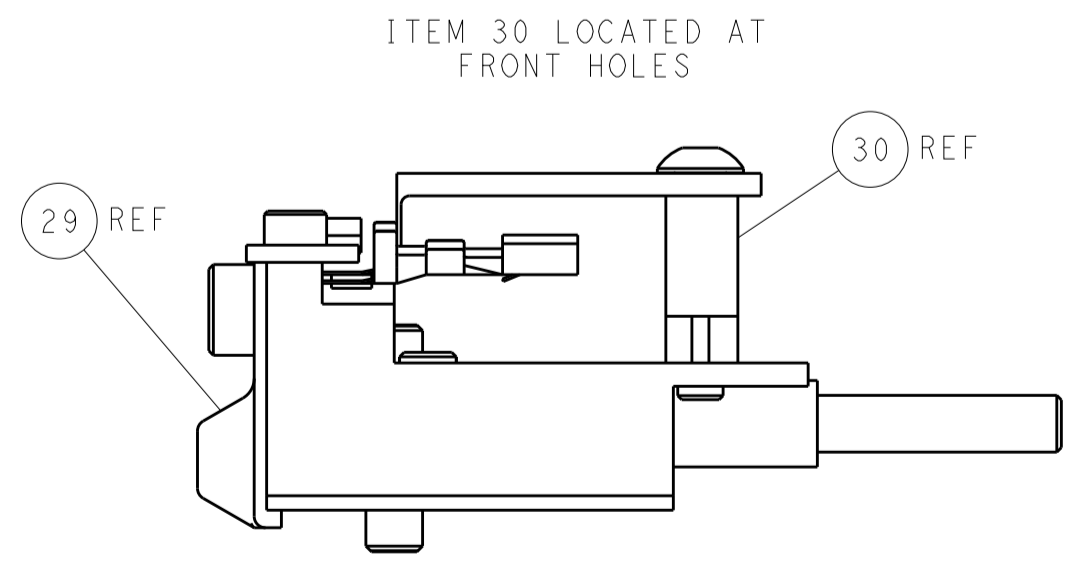
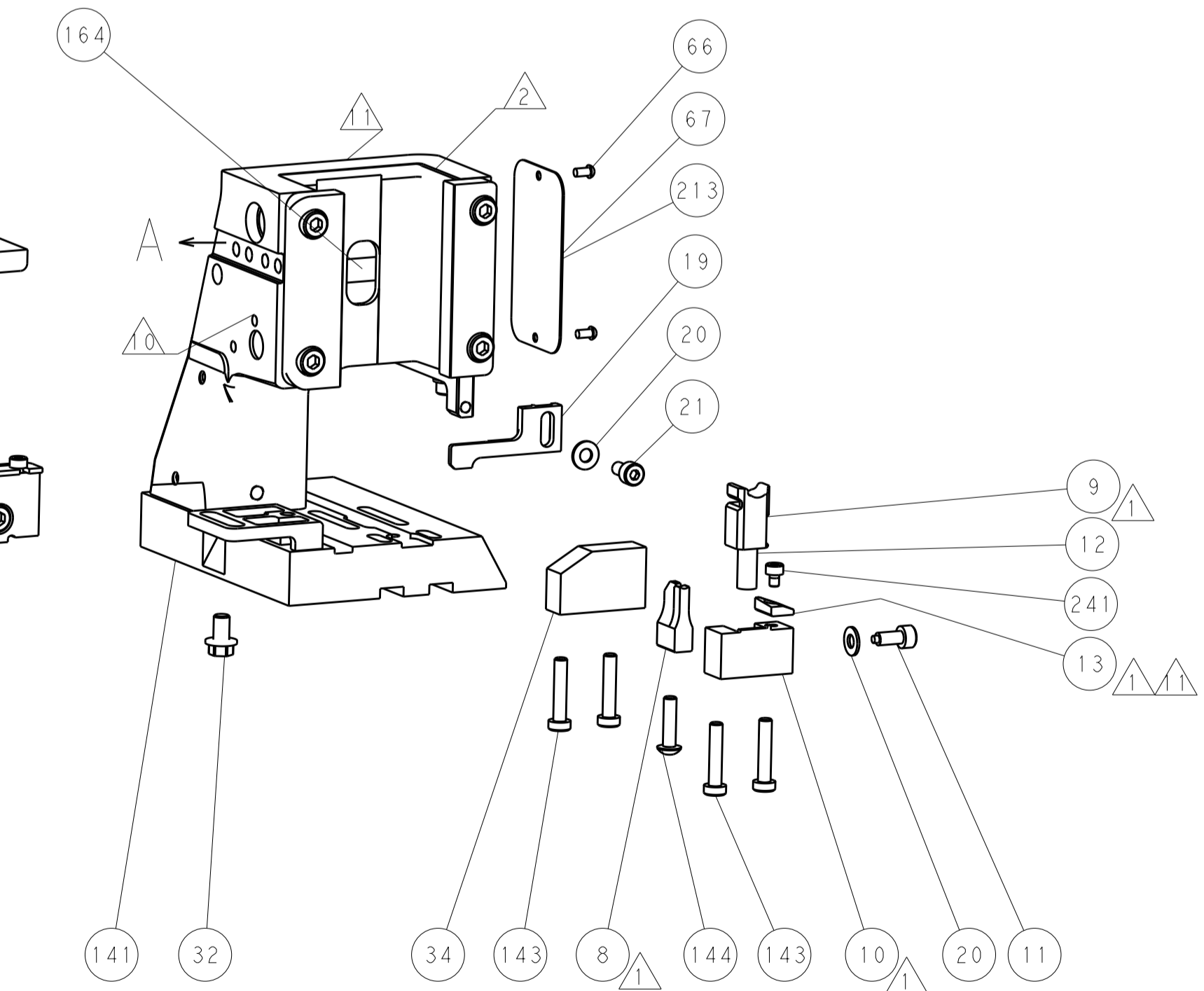
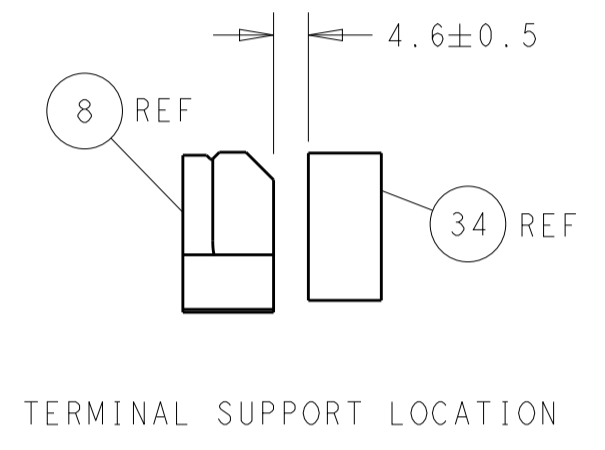
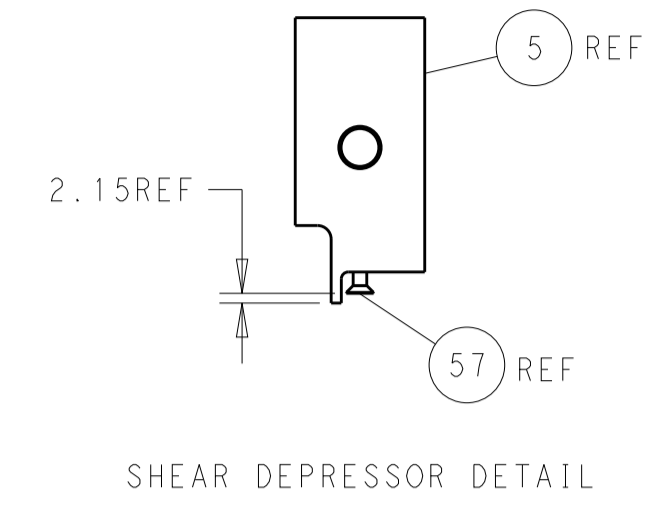
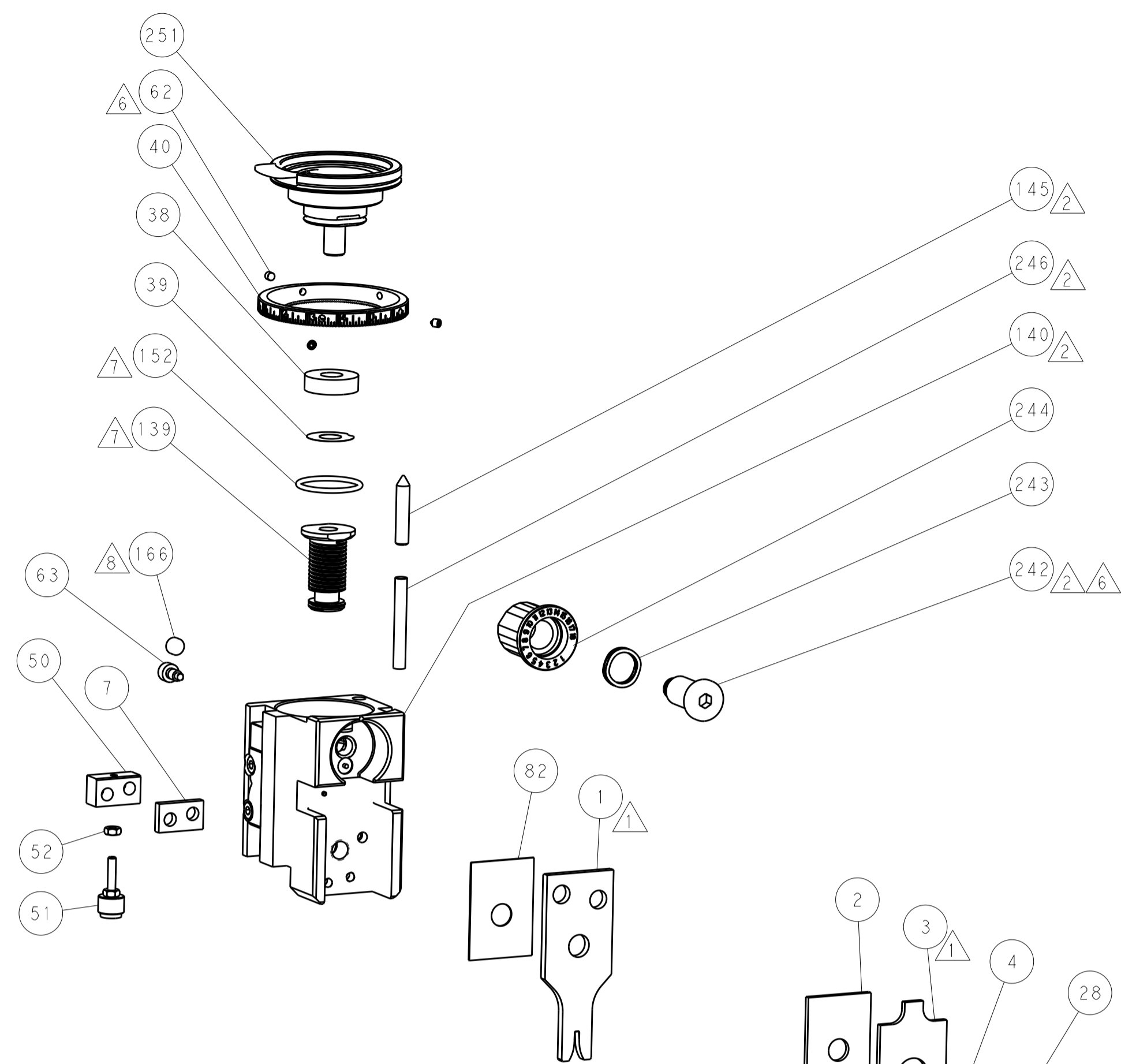
PNEUMATIC



SERVO LATCH PLATE



CAM POSITIONS



PACIFIC VERSION
 Shown on sheets 3 of 4 & 4 of 4
 (Atlantic version shown on sheets 1 of 4 & 2 of 4)

DIMENSIONS:		TOLERANCES UNLESS OTHERWISE SPECIFIED:		DWG: BOB_HIGMAN 30SEPT2015		REV: G_BAILLEY 30SEPT2015		NAME: Ocean Side Feed Applicator	
mm	0 PLC	±		SIZE	CAGE CODE	DRAWING NO	RESTRICTED TO		
	1 PLC	±		A1	00779	2836020			
	2 PLC	±		Customer Accessible Production Drawing		SCALE	1:2	SHEET	4 of 4
	3 PLC	±						REV	A
	4 PLC	±							
	ANGLES	±							
MATERIAL	FINISH								