

ATLANTIC VERSION TERMINATOR INTERFACE ADAPTER	PART NUMBER	REVISION	DESCRIPTION	FEED TYPE	APPLICATOR STYLE CONVERSION CHART						
					CONVERT TO	PART NUMBERS REQUIRED					
	2836002-2	A	FINE CRIMP HEIGHT ADJUST	PNEUMATIC	-	-	-	-	-	-	
	2836002-5	A	FINE CRIMP HEIGHT ADJUST	SERVO LATCH PLATE ⁴	SERVO LATCH PLATE	2119951-1	-	8-2836002-5	1901094-3	-	2168400-6 (QUANTITY 2)
					SMART APPLICATOR	2161326-1	-	8-2836002-4	-	-	-
	2836002-6	A	NON-CRIMP HEIGHT ADJUST	SERVO LATCH PLATE ⁴	PNEUMATIC FEED	2119950-1	1338683-8	5-18022-5	2119641-1	2119799-1	2063440-1
					-	-	-	-	-	-	-
	2836002-7	A	FINE CRIMP HEIGHT ADJUST	NONE	-	-	-	-	-	-	-
	7-2836002-7	A	CRIMP TOOLING KIT	-	-	-	-	-	-	-	-

APPLICATOR DATA		
CRIMP	SIZE	TYPE
WIRE	3.96 mm [.156]	F
INSUL	5.79 mm [.228]	F

APPLICATOR INSTRUCTIONS 408-10389

TERMINAL DATA: KET TERMINAL		LEONI CRIMP SPECIFICATION	
TERMINAL NAME: TERMINAL, 6.4 EARTH RING			
WIRE STRIP LENGTH		INSULATION DIAMETER RANGE	
6.42-7.18 mm [.253-.283 IN]		Ø1.80-2.90 mm [.071-.114 IN]	
TERMINAL APPLICATION SPECIFICATION	LEONI	-	-
TERMINALS APPLIED ^{10,13}			
TE TERMINAL	KET TERMINAL	TE TERMINAL	KET TERMINAL
2113865-1	ST710987-3		

WIRE SIZE	CRIMP HEIGHT mm [INCH]	CRIMP HEIGHT REFERENCE SETTING
AVSSXF 1.25mm ²	2.20+/-0.05 [.087+/- .002]	4.5
AVSSXF 1.25 + 0.5mm ²	2.15+/-0.05 [.085+/- .002]	5.1
AVSSXF 0.85mm ²	2.05+/-0.05 [.081+/- .002]	6.0
AVSSXF 0.5mm ²	2.00+/-0.05 [.079+/- .002]	6.3

- ¹ RECOMMENDED SPARE PARTS
- ² GREASE BEARING SURFACES LIGHTLY
- 3. LUBRICATE DAILY PER THE APPLICATOR INSTRUCTION SHEET SUPPLIED WITH THE APPLICATOR.
- ⁴ APPLICATOR SPECIFIC DATA TO BE ENTERED INTO BLANK MEMORY CHIP AT ASSEMBLY. SEE BELOW FOR PART NUMBER:
 PNEUMATIC FEED WITH "SMART APPLICATOR" CONVERSION: 8-2836002-4
 SERVO FEED WITH "FINE CRIMP HEIGHT ADJUST": 8-2836002-5
 SERVO FEED WITH "NON-CRIMP HEIGHT ADJUST": 8-2836002-6
- 5. ADJUSTMENT OF THE STRIPPER MAY BE REQUIRED WHEN MOVING THE APPLICATOR BETWEEN BENCH AND LEADMAKER APPLICATIONS.
- ⁶ APPLY PART NUMBER 1-23419-5 LOCTITE TO THREADS OF ITEM 62. APPLY PART NUMBER 2-23419-6 LOCTITE TO THREADS OF ITEM 242. FOR -6 ONLY APPLY PART NUMBER 1-23419-5 LOCTITE TO THREADS OF ITEM 37.
- ⁷ GREASE THREADS, GROOVE AND O-RING ON ITEMS 35 & 252.
- ⁸ MAGNET, ITEM 166 MUST BE ORIENTED CORRECTLY IN ORDER TO PROPERLY ACTUATE THE COUNTER.
- ⁹ CRIMP HEIGHT REFERENCE SETTING WAS THE SETTING USED WHEN THE APPLICATOR WAS QUALIFIED AT THE FACTORY. ADJUSTMENT MAY BE NECESSARY WHEN RUNNING APPLICATOR IN THE FIELD.
- ¹⁰ TERMINAL PITCH NOT COMPATIBLE WITH MECHANICAL FEED.
- ¹¹ TO CONVERT THE APPLICATOR TO A NON-CARRIER CUTTING STYLE, REMOVE ITEM 13 AND ATTACH TO THE LOCATION ON THE BACK SIDE OF THE HOUSING. REFER TO INSTRUCTION SHEET FOR ADDITIONAL INFORMATION.
- ¹² WHEN ASSEMBLING A NON CRIMP HEIGHT ADJUST APPLICATOR (-6) USE SHIMS FROM ITEM 260 TO ACHIEVE A NOMINAL SHIM HEIGHT OF 3.6.
- ¹³ TERMINAL LUBRICANT IS RECOMMENDED.
- ¹⁴ WIRE RANGE IS OUTSIDE THE RECOMMENDED WIRE RANGE LISTED BY THE TERMINAL MANUFACTURER. WIRE STRANDS MAY BE VISIBLE IN THE WIRE BARREL SEAM.

***WARNING**
 ON INSTALLATION, SET WIRE DISC, ITEM 40 TO LARGEST WIRE SIZE SETTING. USE OF SETTINGS BELOW MINIMUM REQUIRED CRIMP HEIGHT SETTING WILL CAUSE DAMAGE TO CRIMP TOOLING.

- 2	2	2	2	2168083-1	SCR, SKT HD CAP, RoHS, M3 X 8.0	269	
- 1	1	1	1	1-1633782-0	FENCE	267	
-	-	-	-	2119957-2	APPLICATOR SHIM PACK	260	
- 1	1	1	1	1803078-2	SPACER, PRECISION	259	
- 1	-	1	1	8-21084-0	O-RING, .676 ID, .070 DIA. MAT.	252	
-	-	-	-	2119640-1	PUSH ROD, AIR FEED	250	
-	-	-	-	2079988-1	BUSHING, LCH5-12, MISUMI	249	
-	-	-	-	2119641-1	FEED CAM, AIR FEED	248	
- 1	-	1	1	2119798-1	DETENT PIN	247	
-77	-7	-6	-5	-2	PART NO	DESCRIPTION	ITEM NO

ATLANTIC VERSION
 Shown on sheets 1 of 4 & 2 of 4
 (Pacific version shown on sheets 3 of 4 & 4 of 4)

SET UP GAUGE	LOC	DIST	REVISIONS					
2119599-1	A	66	P	LTN	DESCRIPTION	DATE	OWN	APVD
			A	RELEASED		25NOV2015	BW	TE

- 1	-	1	1	1-22279-3	SPRING, COMPRESSION	246	
-	-	1	-	2161314-1	RAM, STEPPED, ATLANTIC, SF, NON-ADJ	245	
- 1	1	1	1	2119082-8	CAM, SNAIL, INSULATION ADJUSTMENT	244	
- 1	1	1	1	2079764-1	WASHER, WAVE SPRING, CREST-TO-CREST	243	
- 1	1	1	1	2119083-1	RETAINER, INSULATION DIAL	242	
- 1	1	1	1	7-18023-7	SCR, SKT HD CAP M3 X 4.0	241	
-	-	2	2	2168400-6	SHCS, LOW HEAD, RoHS, M5 X 16	240	
-	-	-	-	2119580-1	MECHANICAL FEED ASSEMBLY	239	
-	-	-	-	2063440-1	AIR FEED MODULE	238	
-	-	1	1	2119740-2	TAG, IDENTIFICATION	213	
-	-	1	1	1901094-3	SPACER, FEEDER	198	
-	-	-	-	21045-3	RING, RETAIN, EXTERN, 3/16 CRESCENT	172	
- 1	1	1	1	994969-1	MAGNET, RARE EARTH HIGH ENERGY	166	
- REF	REF	REF	REF	994970-2	COUNTER, MAGNETIC	164	
-	-	-	-	240638-1	SPRING, FEED FINGER	163	
-	-	-	-	3-23627-7	PIN, RETAIN, GRVD, 3/16 X .854	137	
-	-	-	-	2119799-1	HOLDER, FEED FINGER, AF	136	
-	-	REF	REF	-	SEE NOTE 4	MEMORY CHIP, PROGRAMMED	135
-	-	1	1	1633743-1	SERVO FEED LATCH ASM	133	
-	-	REF	REF	-	2119944-1	FEED FINGER ASSEMBLY, SF	117
- 1	1	1	1	2119955-1	ASSY, LUBRICATOR, SIDE FEED	113	
- 1	1	1	1	4-679651-0	FRONT STRIP GUIDE	96	
- 2	2	2	2	1-2168083-3	SCR, SKT HD CAP, RoHS, M3 X 16	95	
- 1	1	1	1	1-455888-1	SPACER, CRIMPER	82	
- 1	1	1	1	2119956-1	DOCUMENTATION PACKAGE	71	
- 1	-	-	-	2119740-1	TAG, IDENTIFICATION	67	
- 2	2	2	2	2168078-1	SCREW, DRIVE, RH, RoHS, 2 x .188	66	
- 1	-	1	1	2119793-1	LIMITER, ADJUSTMENT BOLT	63	
- 3	-	3	3	992763-5	SCR, SET, SOC, CONE POINT, M3 X 4.0	62	
- 2	2	2	2	2-18032-5	SCR, SET, FLT POINT M5 X 20.0	61	
- 1	1	1	1	2079383-4	SCR, BHSC, RoHS (M4 X 8)	60	
-	-	-	-	5-18022-5	SCR, HEX HD CAP, M4 X 6.0	59	
-	-	-	-	1338683-8	FEED PAWL	56	
- 4	4	4	4	2168400-1	SHCS, LOW HEAD, RoHS, M4 X 12	54	
- 2	2	2	2	2168083-9	SCR, SKT HD CAP, RoHS, M4 X 20	53	
- 1	1	1	1	5018030-1	NUT, HEX, REG, RoHS, M3	52	
- 1	1	1	1	811242-5	BUMPER, HOLD DOWN	51	
- 1	1	1	1	690753-2	SPACER, TONKER	50	
-	-	-	-	18023-9	SCR, SKT HD CAP M4 X 6.0	49	
-	-	-	-	2119652-1	FEED CAM, PRE FEED	48	
-	-	-	-	2119653-1	FEED CAM, POST FEED	47	
- 1	1	1	1	2-2119656-8	APPLICATOR BASIC ASSEMBLY, SF	46	
- 1	-	1	1	2161311-1	RAM, STEPPED, AMP STYLE, SIDE FEED	44	
- 1	1	1	1	1-2079383-5	SCR, BHSC, RoHS (M8 X 40)	41	
- 1	-	1	1	2119645-1	DISC, NUMBERED FA WIRE ADJUSTMENT	40	
- 1	-	1	1	2119957-1	APPLICATOR SHIM PACK	39	
- 1	1	1	1	1-2119644-2	RAM WASHER, PRECISION	38	
- 1	1	1	1	2119085-1	FA HEAD, ATLANTIC STYLE	37	
- 1	-	1	1	2119092-1	BOLT, ADJUSTMENT	35	
- 1	1	1	1	4-1752356-5	SUPPORT, TERMINAL	34	
- 1	1	1	1	2161328-1	HEX HEAD, FLANGED, M5 X 8mm LONG	32	
- 1	1	1	1	2119959-3	ASSEMBLY, STRIP GUIDE	29	
- 1	1	1	1	455888-3	SPACER, CRIMPER	28	
- 2	2	2	2	22283-1	SPRING, COMPRESSION	27	
- 1	1	1	1	356835-1	LEVER, DRAG RELEASE	26	
- 1	1	1	1	240792-1	DRAG, TERMINAL	25	
- 1	1	1	1	980371-4	SCR, SKT HD SHLDR 5.0 DIA X 6.0	23	
- 1	1	1	1	2168083-2	SCR, SKT HD CAP, RoHS, M4 X 8.0	21	
- 2	2	2	2	1-18028-2	WASHER, FLAT, REG M4	20	
- 1	1	1	1	2119533-1	STRIPPER, SIDE FEED	19	
- 1	1	1	1	2119806-1	INSERT, SHEAR	13	
- 1	1	1	1	3-22280-3	SPRING, COMPRESSION	12	
- 1	1	1	1	1-356885-3	STOP, SHEAR	11	
- 1	1	1	1	2119805-1	SHEAR HOLDER, FRONT	10	
- 1	1	1	1	454276-5	FLOATING SHEAR, FRONT	9	
1	1	1	1	1-1803249-7	ANVIL, COMBINATION	8	
- 1	1	1	1	5-240641-7	SPACER	7	
-	-	-	-	-	-	6	
- 1	1	1	1	1-2119757-0	DEPRESSOR, SHEAR	5	
- 1	1	1	1	4-238011-5	BLOCK, CRIMPER SPACER	4	
1	1	1	1	5-1803187-0	CRIMPER, INSULATION F	3	
- 1	1	1	1	2-455888-2	SPACER, CRIMPER	2	
1	1	1	1	3-1803188-9	CRIMPER, WIRE	1	
-77	-7	-6	-5	-2	PART NO	DESCRIPTION	ITEM NO

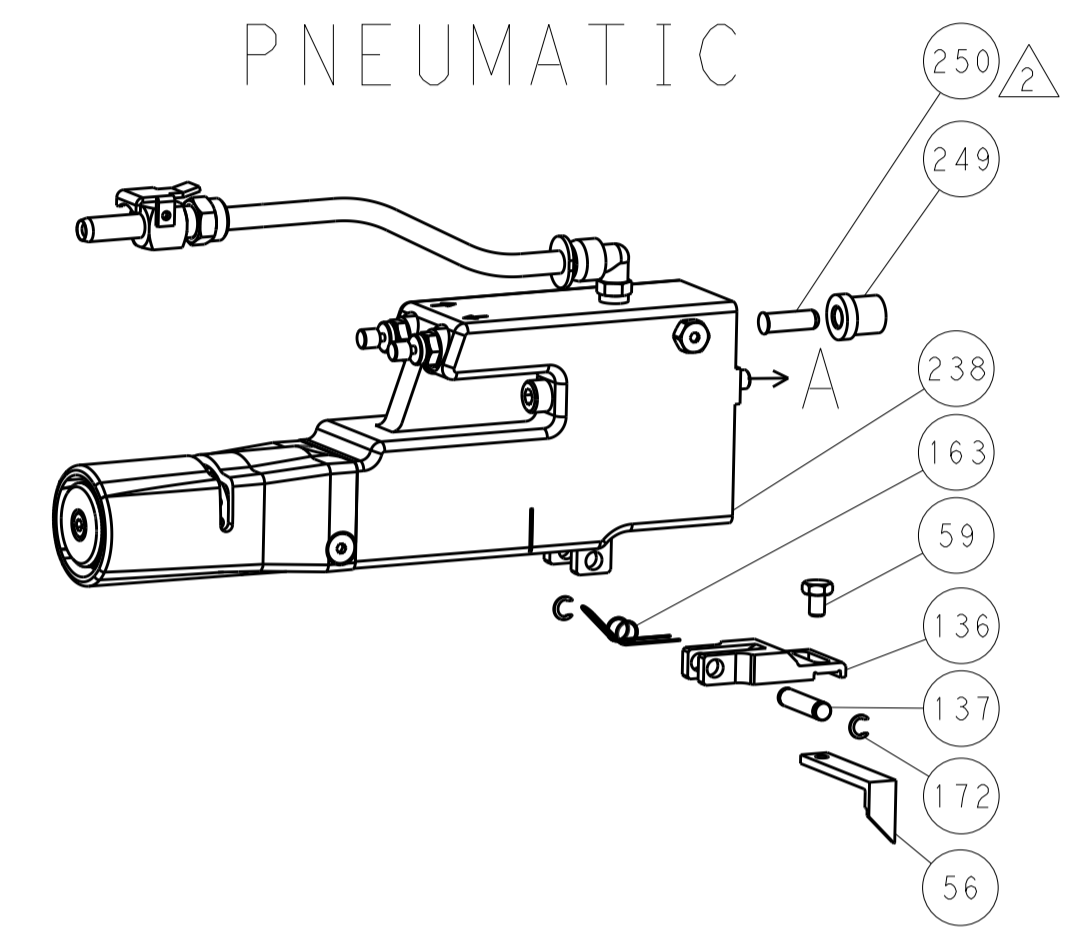
DIMENSIONS:		TOLERANCES UNLESS OTHERWISE SPECIFIED:		DRAWING NO	
mm	0 PLC	±		25SEP2015	REV
	1 PLC	±		25SEP2015	CHK
	2 PLC	±			DES
	3 PLC	±			APP
	4 PLC	±			APVD
	ANGLES	±			NAME
	FINISH	±			TE Connectivity
					Harrisburg, PA 17105-3608
					Product Spec
					Application Spec
					Size
					Case Code
					Drawing No
					Restricted To
					Weight
					Customer Accessible Production Drawing
					Scale
					Sheet
					Rev

LOC	DIST	REV	DATE	BY	APPV
A	66				

REVISIONS			
REV	DATE	BY	APPV
-	-	-	-
SEE SHEET 1			

FEED TYPE

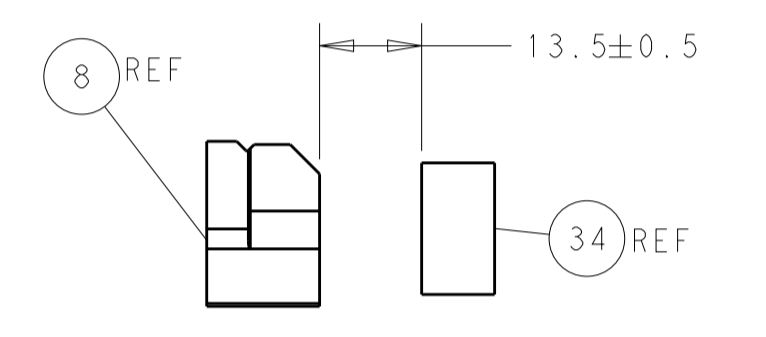
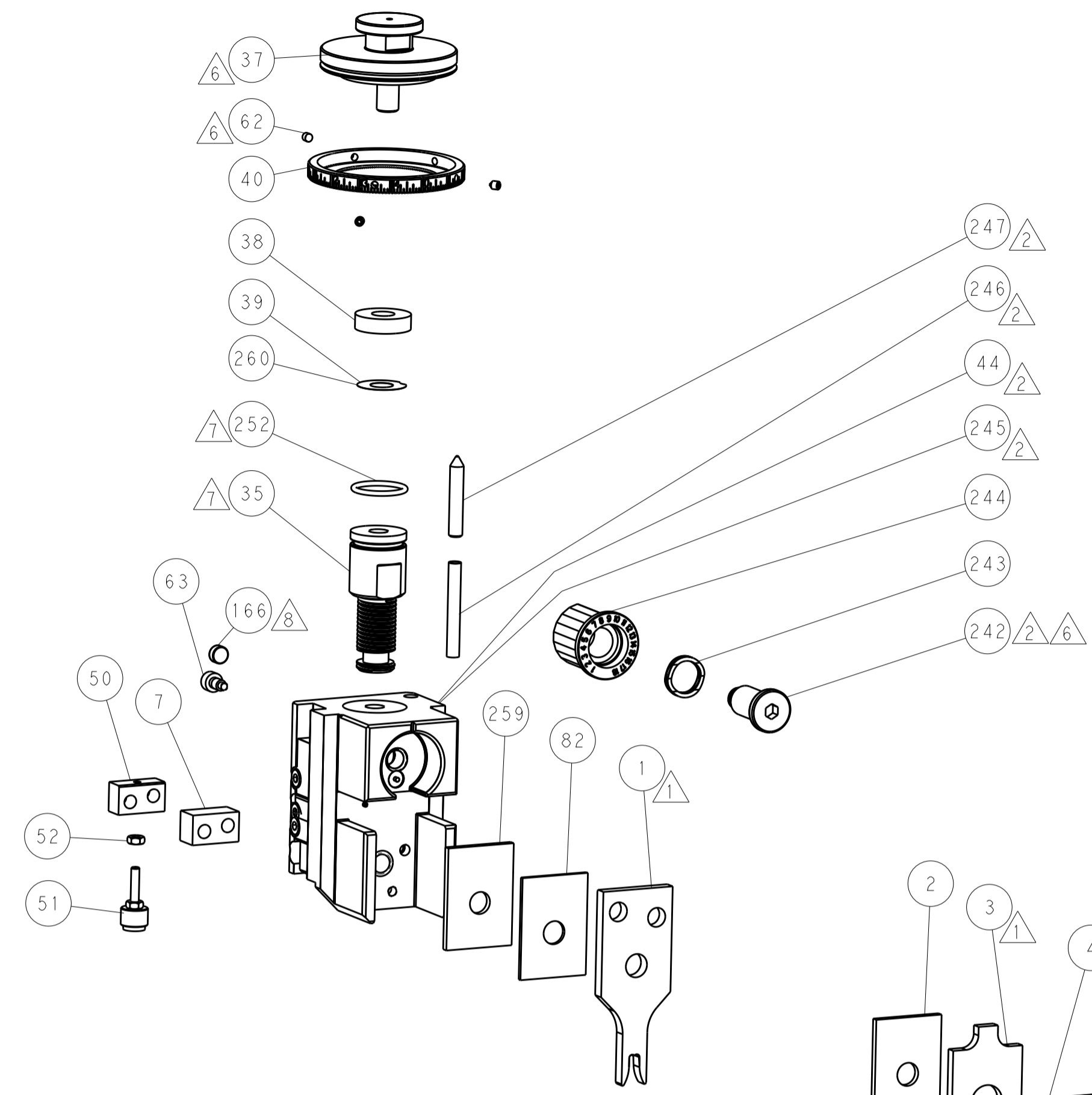
PNEUMATIC



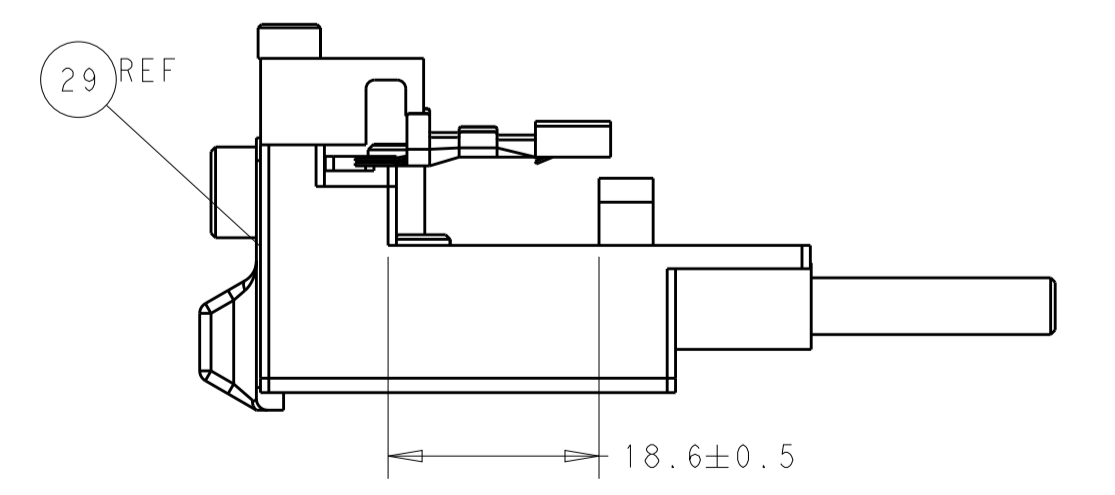
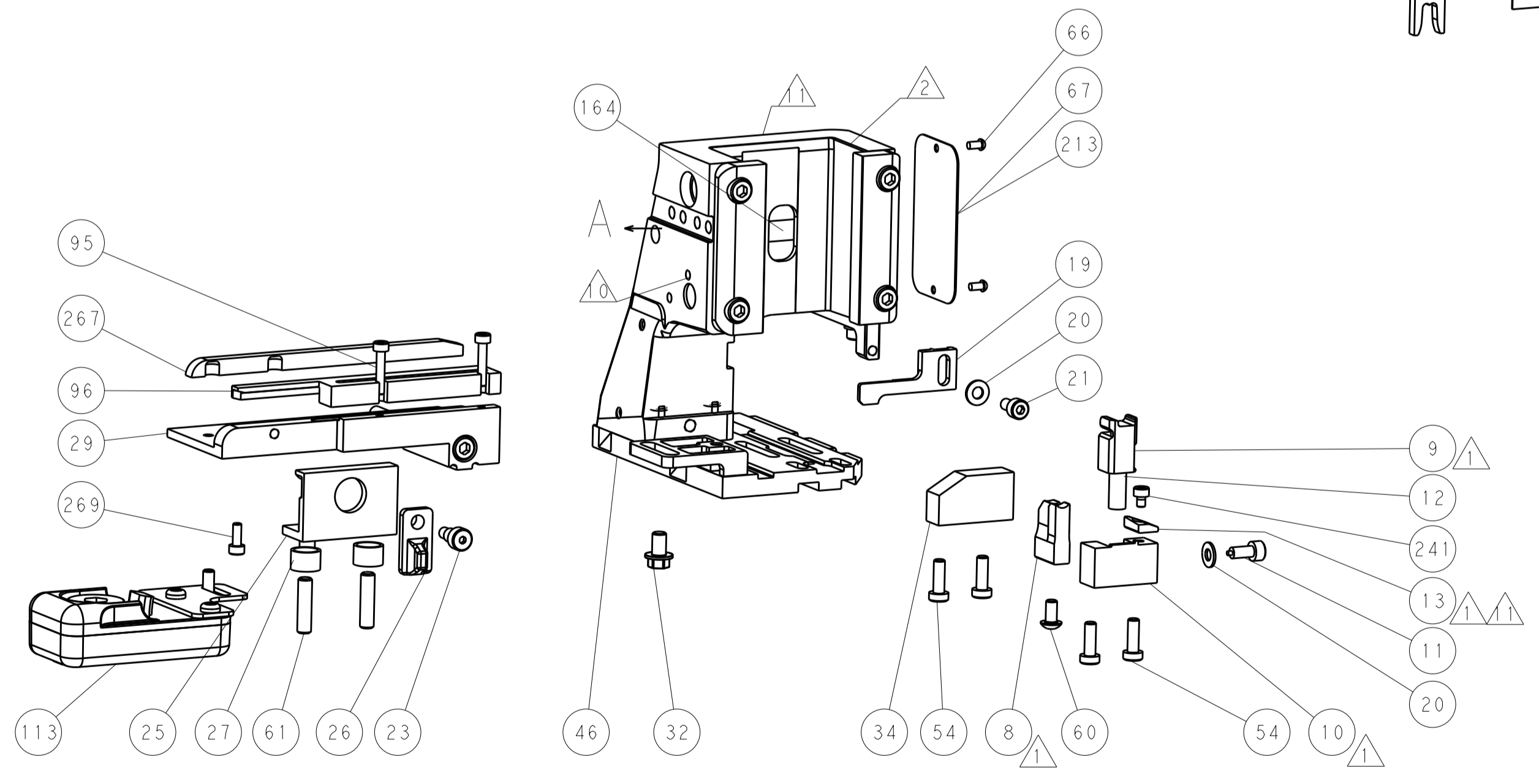
SERVO LATCH PLATE



CAM POSITION



TERMINAL SUPPORT LOCATION



FEED TRACK POSITION GUIDE BY INSULATION BARREL

ATLANTIC VERSION
 Shown on sheets 1 of 4 & 2 of 4
 (Pacific version shown on sheets 3 of 4 & 4 of 4)

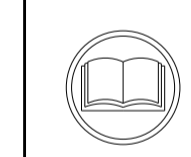
DIMENSIONS:		TOLERANCES UNLESS OTHERWISE SPECIFIED:		DWG: B. WEAVER 25SEP2015		TE Connectivity	
mm	0 PLC ±	1 PLC ±	2 PLC ±	3 PLC ±	4 PLC ±	ANGLES ±	FINISH ±
MATERIAL:				APVD: T. ELBIN 25SEP2015		NAME: Ocean Side Feed Applicator	
Customer Accessible Production Drawing				SCALE: 1:2		SHEET 2 OF 4 REV A	

PACIFIC VERSION TERMINATOR INTERFACE ADAPTER	PART NUMBER	REVISION	DESCRIPTION	FEED TYPE	APPLICATOR STYLE CONVERSION CHART					
					CONVERT TO	PART NUMBERS REQUIRED				
	2-2836002-2	A	FINE CRIMP HEIGHT ADJUST	PNEUMATIC	-	-	-	-	-	-
					SERVO LATCH PLATE	2119951-1	-	8-2836002-5	1901094-3	-
	2-2836002-5	A	FINE CRIMP HEIGHT ADJUST	SERVO LATCH PLATE ⁴	-	-	-	-	-	-
					PNEUMATIC FEED	2119950-1	1338683-8	5-18022-5	2119641-2	2119799-1
2-2836002-7	A	FINE CRIMP HEIGHT ADJUST	NONE	-	-	-	-	-	-	
7-2836002-7	A	CRIMP TOOLING KIT	-	-	-	-	-	-	-	

APPLICATOR DATA		
CRIMP	SIZE	TYPE
WIRE	3.96 mm [1.56]	F
INSUL	5.79 mm [2.28]	F
APPLICATOR INSTRUCTIONS 408-10389		

TERMINAL DATA: KET TERMINAL LEONI CRIMP SPECIFICATION	
TERMINAL NAME: TERMINAL, 6.4 EARTH RING	
WIRE STRIP LENGTH 6.42-7.18 mm [2.53-.283 IN]	INSULATION DIAMETER RANGE Ø1.80-2.90 mm [0.071-.114 IN]
TERMINAL APPLICATION SPECIFICATION LEONI	
TERMINALS APPLIED ¹⁰	
TE TERMINAL 2113865-1	KET TERMINAL ST710987-3

WIRE SIZE	CRIMP HEIGHT mm [INCH]	CRIMP HEIGHT REFERENCE SETTING ⁹
AVSSXF 1.25mm ²	2.20+/-0.05 [1.087+/-0.002]	4.5
AVSSXF 1.25 + 0.5mm ²	2.15+/-0.05 [1.085+/-0.002]	5.1
AVSSXF 0.85mm ²	2.05+/-0.05 [1.081+/-0.002]	6.0
AVSSXF 0.5mm ²	2.00+/-0.05 [1.079+/-0.002]	6.3



- ¹ RECOMMENDED SPARE PARTS
- ² GREASE BEARING SURFACES LIGHTLY
3. LUBRICATE DAILY PER THE APPLICATOR INSTRUCTION SHEET SUPPLIED WITH THE APPLICATOR.
- ⁴ APPLICATOR SPECIFIC DATA TO BE ENTERED INTO BLANK MEMORY CHIP AT ASSEMBLY. SEE BELOW FOR PART NUMBER:
PNEUMATIC FEED WITH "SMART APPLICATOR" CONVERSION: 8-2836002-4
SERVO FEED WITH "FINE CRIMP HEIGHT ADJUST": 8-2836002-5
5. ADJUSTMENT OF THE STRIPPER MAY BE REQUIRED WHEN MOVING THE APPLICATOR BETWEEN BENCH AND LEADMAKER APPLICATIONS.
- ⁶ APPLY PART NUMBER 1-23419-5 LOCTITE TO THREADS OF ITEM 62.
APPLY PART NUMBER 2-23419-6 LOCTITE TO THREADS OF ITEM 242.
- ⁷ GREASE THREADS, GROOVE AND O-RING ON ITEMS 139 & 152.
- ⁸ MAGNET MUST BE ORIENTED CORRECTLY IN ORDER TO PROPERLY ACTUATE THE COUNTER.
- ⁹ CRIMP HEIGHT REFERENCE SETTING WAS THE SETTING USED WHEN THE APPLICATOR WAS QUALIFIED AT THE FACTORY. ADJUSTMENT MAY BE NECESSARY WHEN RUNNING APPLICATOR IN THE FIELD.
- ¹⁰ TERMINAL PITCH NOT COMPATIBLE WITH MECHANICAL FEED.
- ¹¹ TO CONVERT THE APPLICATOR TO A NON-CARRIER CUTTING STYLE, REMOVE ITEM 13 AND ATTACH TO THE LOCATION ON BACK SIDE OF THE HOUSING. REFER TO INSTRUCTION SHEET FOR ADDITIONAL INFORMATION.
- ¹² TERMINAL LUBRICANT IS RECOMMENDED.
- ¹³ WIRE RANGE IS OUTSIDE THE RECOMMENDED WIRE RANGE LISTED BY THE TERMINAL MANUFACTURER. WIRE STRANDS MAY BE VISIBLE IN THE WIRE BARREL SEAM.

***WARNING**
ON INSTALLATION, SET WIRE DISC, ITEM 40 TO LARGEST WIRE SIZE SETTING. USE OF SETTINGS BELOW MINIMUM REQUIRED CRIMP HEIGHT SETTING WILL CAUSE DAMAGE TO CRIMP TOOLING.

-	2	2	2	2168083-1	SCR, SKT HD CAP, RoHS, M3 X 8.0	269
-	1	1	1	1-1633782-0	FENCE	267
-	1	1	1	1803078-2	SPACER, PRECISION	259
-	1	1	1	2119782-1	FINE ADJUST HEAD ASM, PACIFIC STYLE	251
-	-	-	-	2119640-1	PUSH ROD, AIR FEED	250
-	-	-	-	2079988-1	BUSHING, LCH5-12, MISUMI	249
-	1	1	1	1-22279-3	SPRING, COMPRESSION	246
-77	-27	-25	-22	PART NO	DESCRIPTION	ITEM NO

PACIFIC VERSION
Shown on sheets 3 of 4 & 4 of 4
(Atlantic version shown on sheets 1 of 4 & 2 of 4)

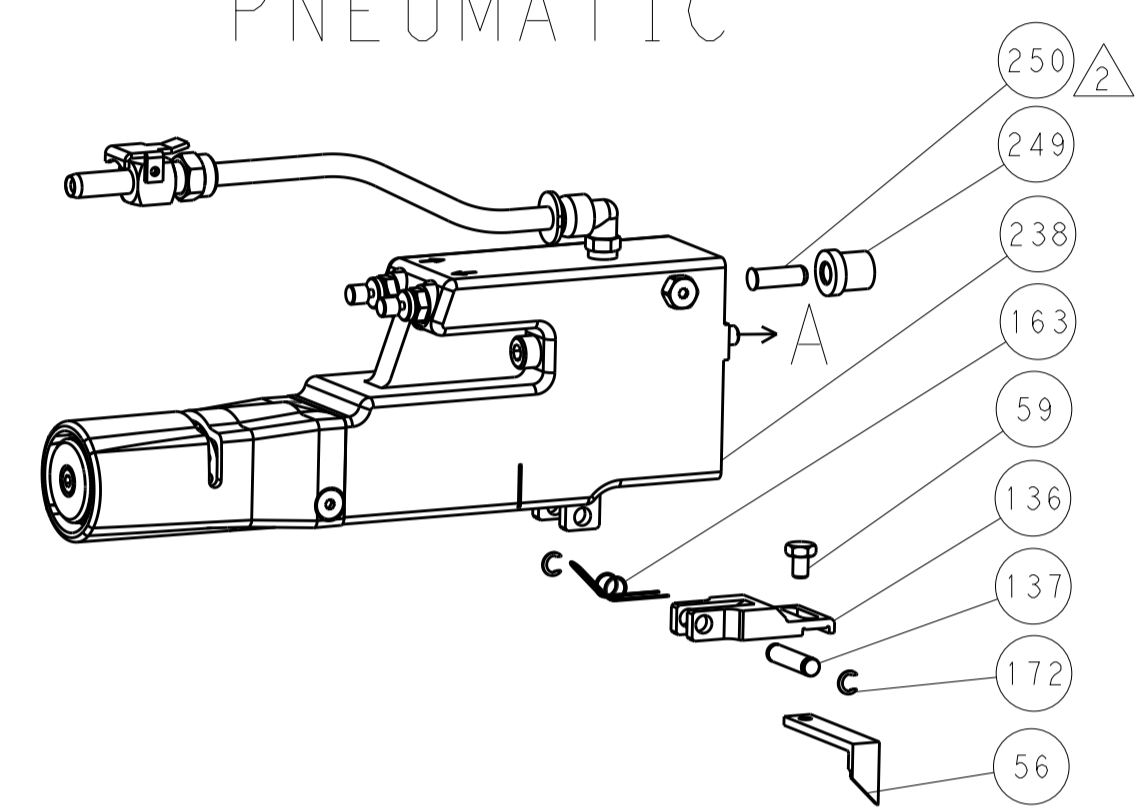
SET UP GAUGE	LOC	DIST	REVISIONS			
2119599-1	A	66	REV	DATE	OWN	APVD
-	-	-	1	SEE SHEET 1	-	-

-	1	1	1	2119082-8	CAM, SNAIL, INSULATION ADJUSTMENT	244
-	1	1	1	2079764-1	WASHER, WAVE SPRING, CREST-TO-CREST	243
-	1	1	1	2119083-1	RETAINER, INSULATION DIAL	242
-	1	1	1	7-18023-7	SCR, SKT HD CAP M3 X 4.0	241
-	-	2	-	2168400-6	SHCS, LOW HEAD, RoHS, M5 X 16	240
-	-	-	-	2119580-1	MECHANICAL FEED ASSEMBLY	239
-	-	-	-	2063440-1	AIR FEED MODULE	238
-	-	1	-	2119740-2	TAG, IDENTIFICATION	213
-	-	1	-	1901094-3	SPACER, FEEDER	198
-	-	-	2	21045-3	RING, RETAIN, EXTERN, 3/16 CRESCENT	172
-	1	1	1	994969-1	MAGNET, RARE EARTH HIGH ENERGY	166
-	REF	REF	REF	994970-2	COUNTER, MAGNETIC	164
-	-	-	1	240638-1	SPRING, FEED FINGER	163
-	1	1	1	8-21084-1	O-RING, .801 ID, .070 DIA. MAT.	152
-	-	-	1	2119641-2	FEED CAM, AIR FEED	151
-	1	1	1	2119798-2	DETENT PIN	145
-	1	1	1	2079383-8	SCR, BHSC, RoHS (M4 X 16)	144
-	4	4	4	2168400-5	SHCS, LOW HEAD, RoHS, M4 X 20	143
-	-	-	-	2119653-2	FEED CAM, POST FEED	142
-	1	1	1	2-2119656-9	APPLICATOR BASIC ASSEMBLY, SF	141
-	1	1	1	2161312-1	RAM, STEPPED, ASIAN STYLE, SIDE FEED	140
-	1	1	1	2119092-2	BOLT, ADJUSTMENT	139
-	-	-	1	3-23627-7	PIN, RETAIN, GRVD, 3/16 X .854	137
-	-	-	1	2119799-1	HOLDER, FEED FINGER, AF	136
-	-	REF	-	SEE NOTE 4	MEMORY CHIP, PROGRAMMED	135
-	-	1	-	1633743-1	SERVO FEED LATCH ASM	133
-	-	REF	-	2119944-1	FEED FINGER ASSEMBLY, SF	117
-	1	1	1	2119955-1	ASSY, LUBRICATOR, SIDE FEED	113
-	1	1	1	4-679651-0	FRONT STRIP GUIDE	96
-	2	2	2	1-2168083-3	SCR, SKT HD CAP, RoHS, M3 X 16	95
-	1	1	1	1-455888-1	SPACER, CRIMPER	82
-	1	1	1	2119956-1	DOCUMENTATION PACKAGE	71
-	1	-	1	2119740-1	TAG, IDENTIFICATION	67
-	2	2	2	2168078-1	SCREW, DRIVE, RH, RoHS, 2 x .188	66
-	1	1	1	2119793-1	LIMITER, ADJUSTMENT BOLT	63
-	3	3	3	992763-5	SCR, SET, SOC, CONE POINT, M3 X 4.0	62
-	2	2	2	2-18032-5	SCR, SET, FLT POINT M5 X 20.0	61
-	-	-	1	5-18022-5	SCR, HEX HD CAP, M4 X 6.0	59
-	-	-	1	1338683-8	FEED PAWL	56
-	2	2	2	2168083-9	SCR, SKT HD CAP, RoHS, M4 X 20	53
-	1	1	1	5018030-1	NUT, HEX, REG, RoHS, M3	52
-	1	1	1	811242-5	BUMPER, HOLD DOWN	51
-	1	1	1	690753-2	SPACER, TONKER	50
-	-	-	1	18023-9	SCR, SKT HD CAP M4 X 6.0	49
-	-	-	-	2119652-1	FEED CAM, PRE FEED	48
-	1	1	1	1-2079383-5	SCR, BHSC, RoHS (M8 X 40)	41
-	1	1	1	2119645-1	DISC, NUMBERED FA WIRE ADJUSTMENT	40
-	1	1	1	2119957-1	APPLICATOR SHIM PACK	39
-	1	1	1	1-2119644-2	RAM WASHER, PRECISION	38
-	1	1	1	4-1752356-5	SUPPORT, TERMINAL	34
-	1	1	1	2161328-1	HEX HEAD, FLANGED, M5 X 8mm LONG	32
-	1	1	1	2119959-3	ASSEMBLY, STRIP GUIDE	29
-	1	1	1	455888-3	SPACER, CRIMPER	28
-	2	2	2	22283-1	SPRING, COMPRESSION	27
-	1	1	1	356835-1	LEVER, DRAG RELEASE	26
-	1	1	1	240792-1	DRAG, TERMINAL	25
-	1	1	1	980371-4	SCR, SKT HD SHLDR 5.0 DIA X 6.0	23
-	1	1	1	2168083-2	SCR, SKT HD CAP, RoHS, M4 X 8.0	21
-	2	2	2	1-18028-2	WASHER, FLAT, REG M4	20
-	1	1	1	2119533-1	STRIPPER, SIDE FEED	19
-	1	1	1	2119806-1	INSERT, SHEAR	13
-	1	1	1	3-22280-3	SPRING, COMPRESSION	12
-	1	1	1	1-356885-3	STOP, SHEAR	11
-	1	1	1	2119805-1	SHEAR HOLDER, FRONT	10
-	1	1	1	454276-5	FLOATING SHEAR, FRONT	9
-	1	1	1	1-1803249-7	ANVIL, COMBINATION	8
-	1	1	1	5-240641-7	SPACER	7
-	-	-	-	-	-	6
-	1	1	1	1-2119757-0	DEPRESSOR, SHEAR	5
-	1	1	1	4-238011-5	BLOCK, CRIMPER SPACER	4
-	1	1	1	5-1803187-0	CRIMPER, INSULATION F	3
-	1	1	1	2-455888-2	SPACER, CRIMPER	2
-	1	1	1	3-1803188-9	CRIMPER, WIRE	1
-77	-27	-25	-22	PART NO	DESCRIPTION	ITEM NO

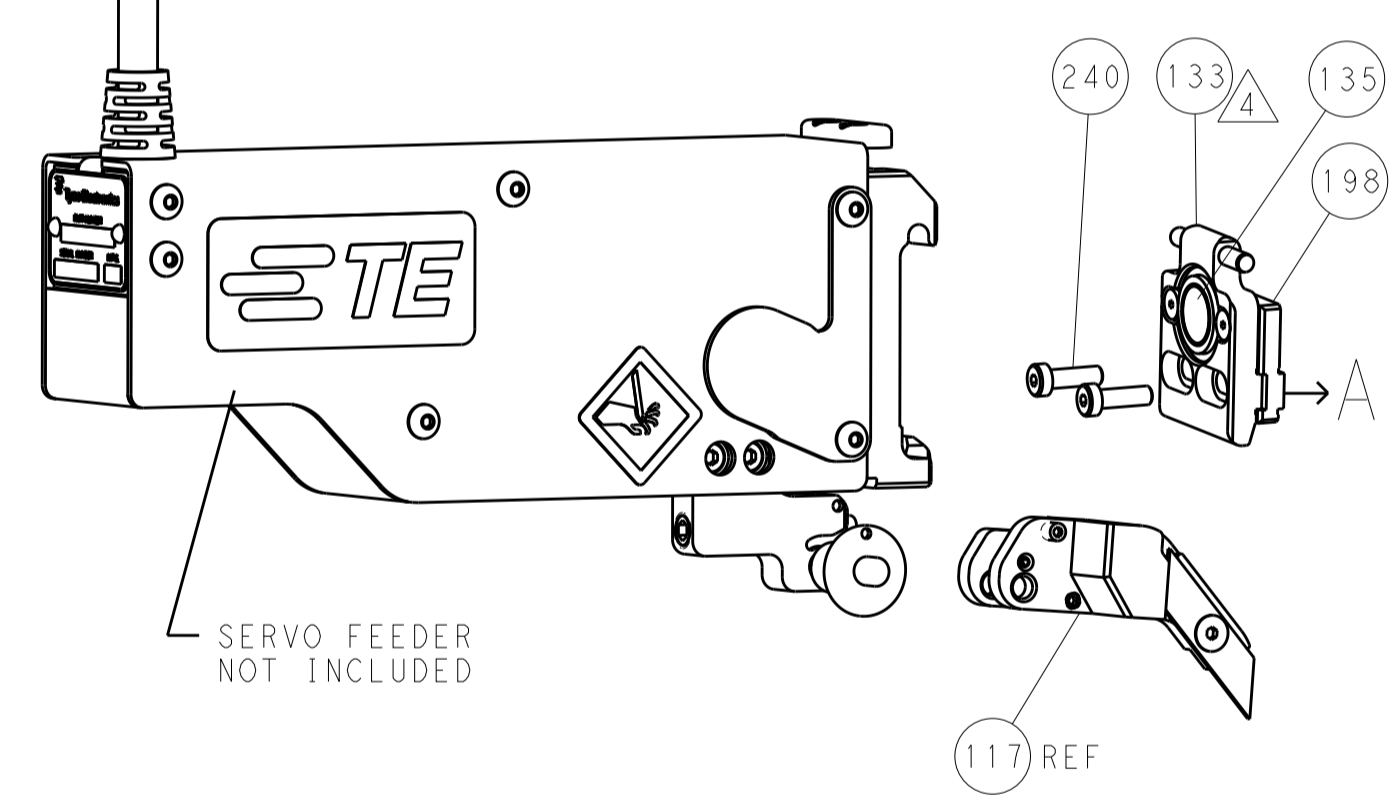
DIMENSIONS: mm		TOLERANCES UNLESS OTHERWISE SPECIFIED:		DWN ID: WEAVER 25SEP2015		TE Connectivity Harrisburg, PA 17105-3608	
0 PLC ±		1 PLC ±		CHK: T. ELBIN 25SEP2015		NAME: Ocean Side Feed Applicator	
2 PLC ±		3 PLC ±		APVD: T. ELBIN 25SEP2015		SIZE: A1	
4 PLC ±		ANGLES ±		PRODUCT SPEC		CAGE CODE: 00779	
MATERIAL		FINISH		APPLICATION SPEC		DRAWING NO: C=2836002	
WEIGHT		SCALE: 1:2		RESTRICTED TO		SHEET 3 OF 4	
Customer Accessible Production Drawing		REV: A		Customer Accessible Production Drawing		REV: A	

LOC		DIST		REVISIONS			
A	66	P	LTH	DESCRIPTION	DATE	DWN	APVD
		-		SEE SHEET 1			

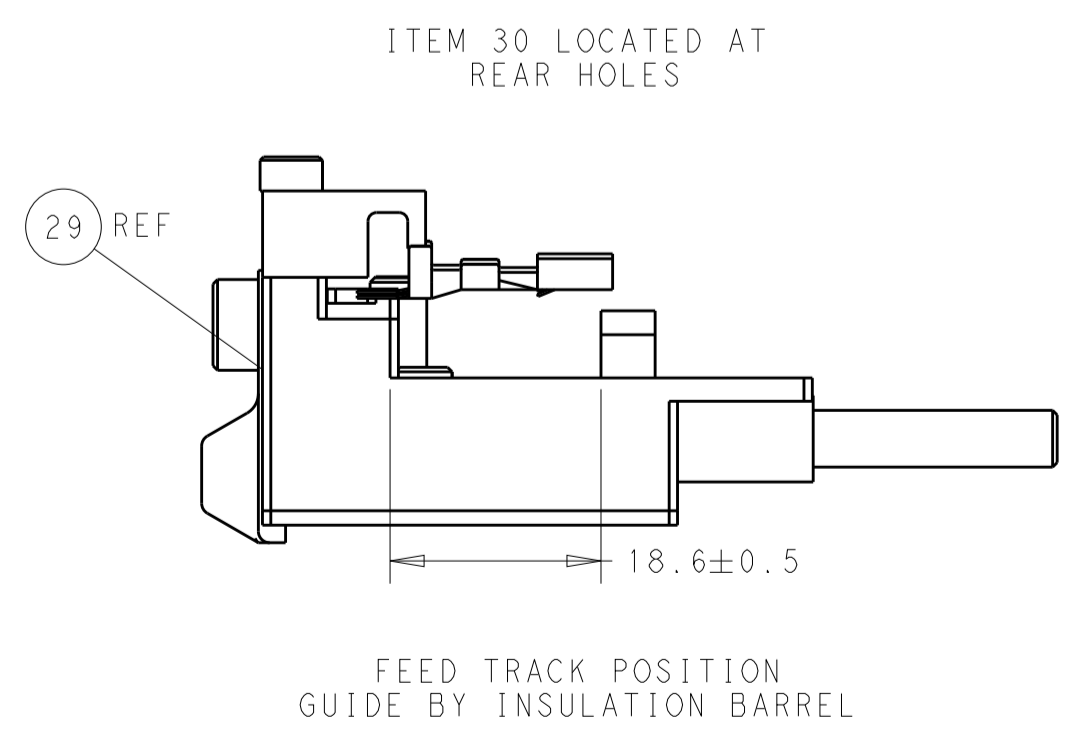
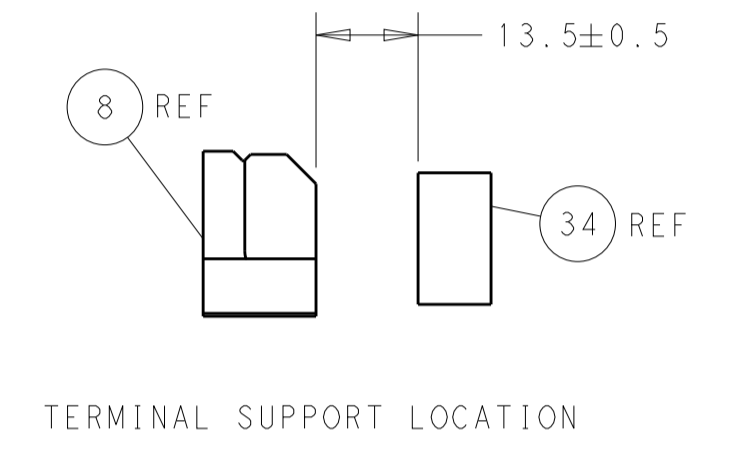
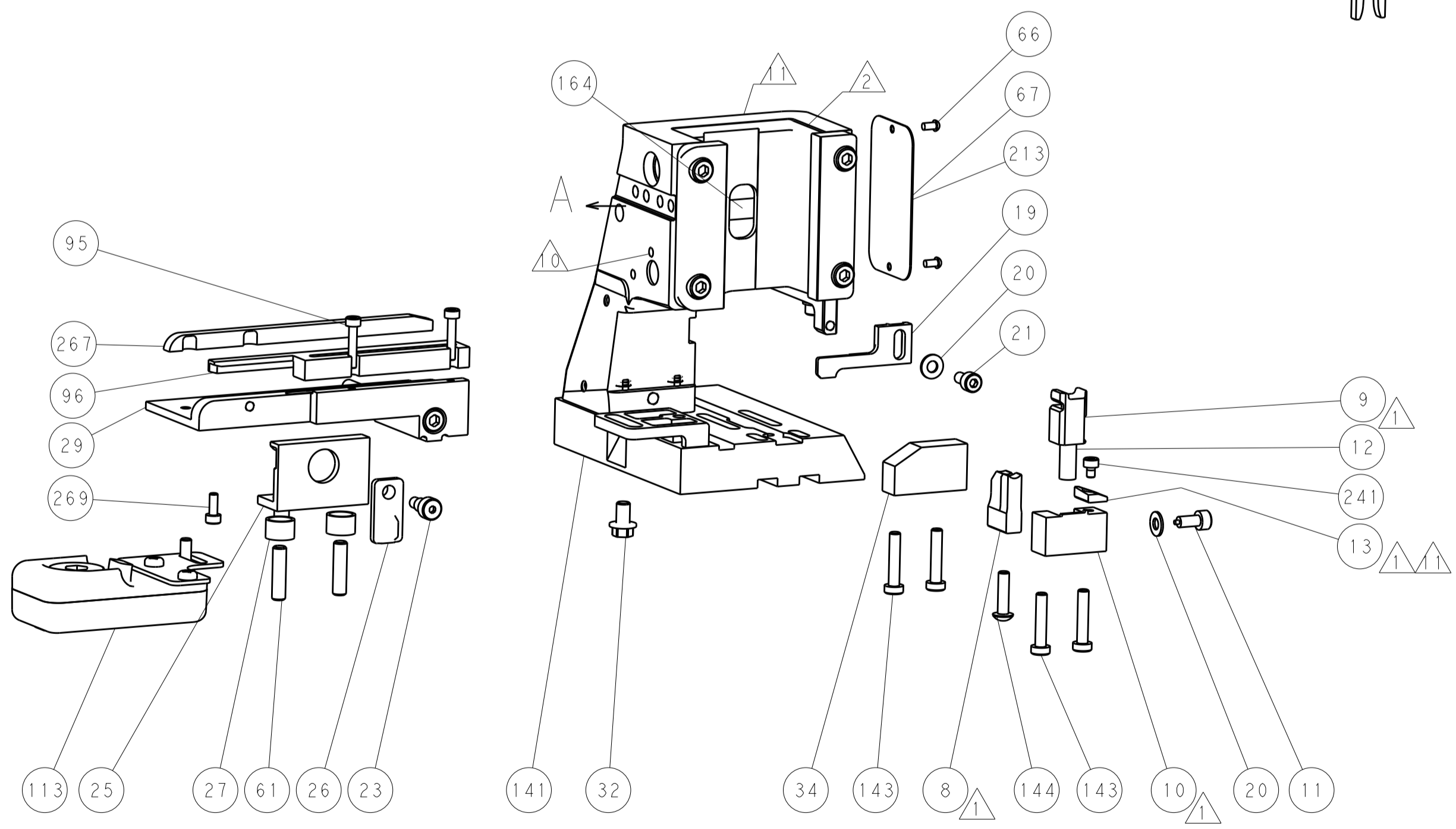
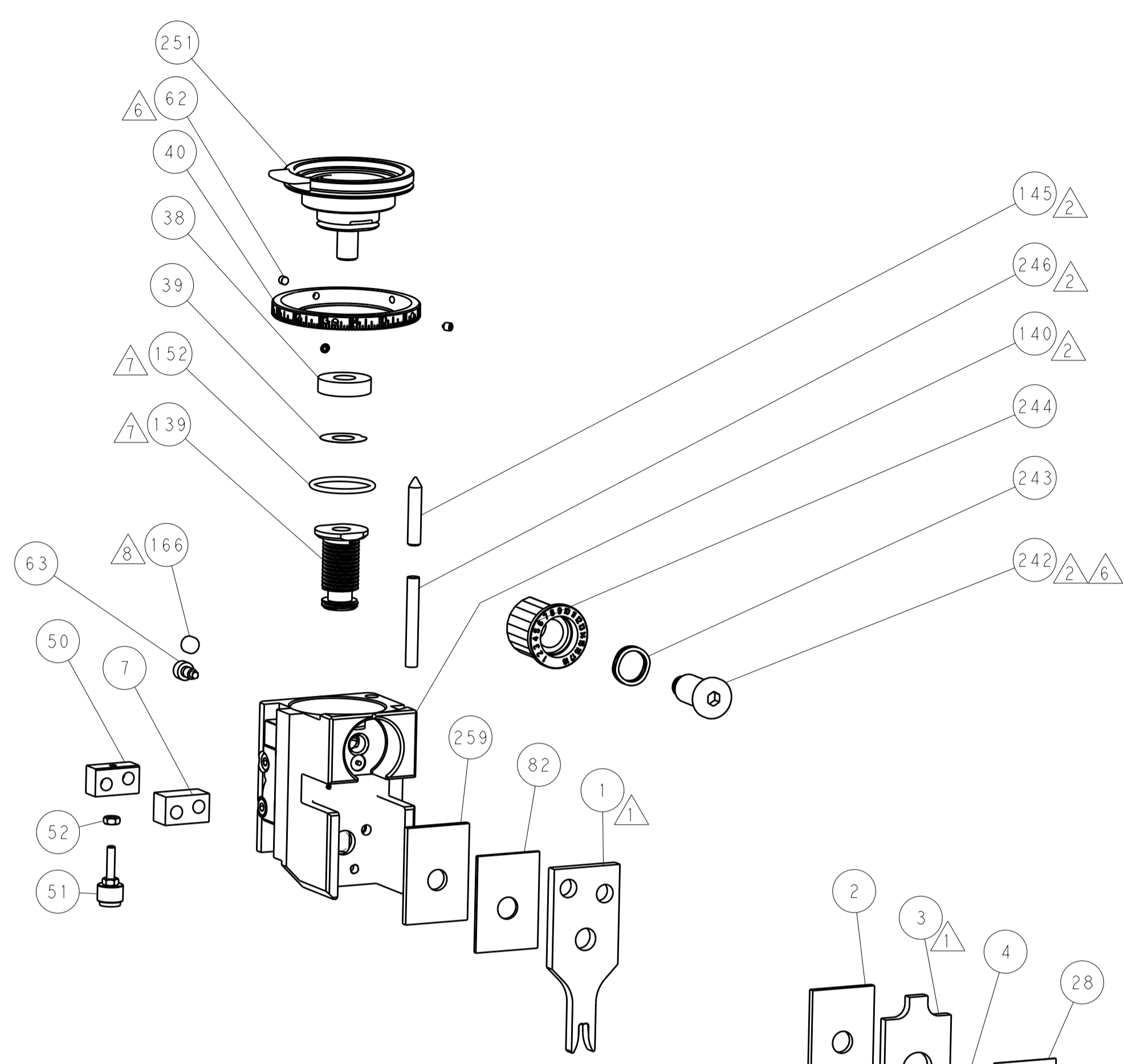
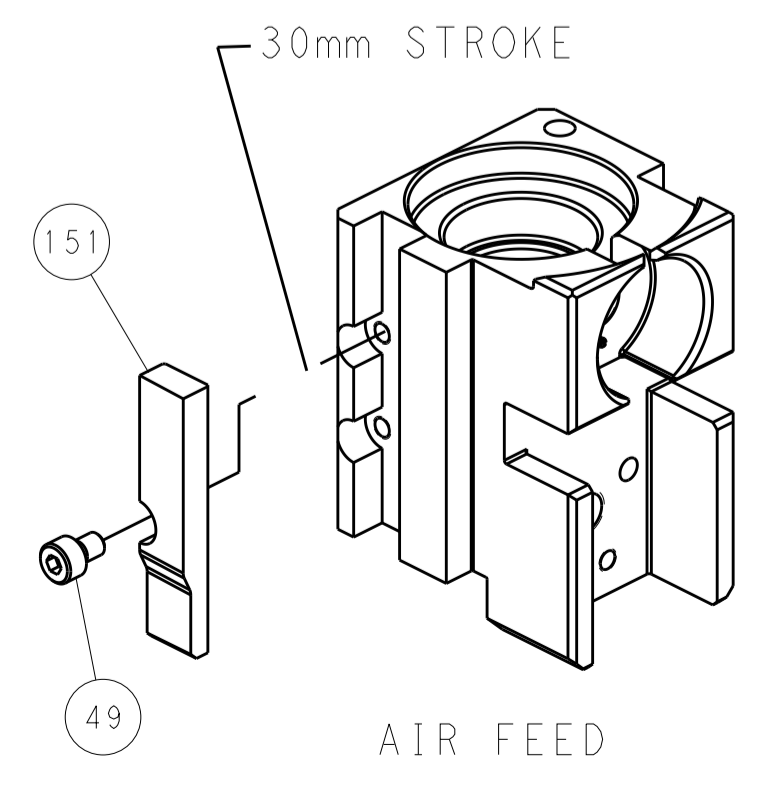
FEED TYPE PNEUMATIC



SERVO LATCH PLATE



CAM POSITION



PACIFIC VERSION
 Shown on sheets 3 of 4 & 4 of 4
 (Atlantic version shown on sheets 1 of 4 & 2 of 4)

DIMENSIONS:		TOLERANCES UNLESS OTHERWISE SPECIFIED:		DWN B. WEAVER 25SEP2015		TE Connectivity	
mm	0 PLC ±	1 PLC ±	2 PLC ±	3 PLC ±	4 PLC ±	5 PLC ±	Harrisburg, PA 17105-3608
	ANGLES ±	FINISH ±		CHK T. ELBIN 25SEP2015	NAME Ocean Side Feed Applicator		
MATERIAL				APVD T. ELBIN 25SEP2015	PRODUCT SPEC	SIZE	CAGE CODE DRAWING NO
					APPLICATION SPEC	A1	00779 C=2836002
					RESTRICTED TO	SCALE	1:2
					Customer Accessible Production Drawing	SHEET	4 of 4
						REV	A