

ATLANTIC VERSION TERMINATOR INTERFACE ADAPTER	PART NUMBER	REVISION	DESCRIPTION	FEED TYPE	APPLICATOR STYLE CONVERSION CHART						
					CONVERT TO		PART NUMBERS REQUIRED				
	2836001-2	A	FINE CRIMP HEIGHT ADJUST	PNEUMATIC	-	-	-	-	-	-	
	2836001-5	A	FINE CRIMP HEIGHT ADJUST	SERVO LATCH PLATE	2119951-1	-	8-2836001-5	1901094-3	1-1752354-6	2168400-6 (QUANTITY 2)	
	2836001-6	A	NON-CRIMP HEIGHT ADJUST	SERVO LATCH PLATE	2161326-1	-	8-2836001-4	-	-	-	
	2836001-7	A	FINE CRIMP HEIGHT ADJUST	NONE	-	-	-	-	-	-	
	7-2836001-7	A	CRIMP TOOLING KIT	-	-	-	-	-	-	-	

APPLICATOR DATA		
CRIMP	SIZE	TYPE
WIRE	5.08 mm [.200]	F
INSUL	7.37 mm [.290]	F
APPLICATOR INSTRUCTIONS 408-10389		

TERMINAL DATA: KET TERMINAL		KET CRIMP SPECIFICATION	
TERMINAL NAME: TERMINAL, EARTH RING			
WIRE STRIP LENGTH		INSULATION DIAMETER RANGE	
6.50-7.00 mm [.256-.276 IN]		Ø3.68-4.90 mm [.145-.193 IN]	
TERMINAL APPLICATION SPECIFICATION		ST710986-3 Rev 11/29/11	-
TERMINALS APPLIED			
TE TERMINAL	KET TERMINAL	TE TERMINAL	KET TERMINAL
2113864-1	ST710986-3		

WIRE SIZE	CRIMP HEIGHT mm [INCH]	CRIMP HEIGHT REFERENCE SETTING
AEXF 5mm <sup>2</sup>	2.85 +/- 0.05 [1.112 +/- .002]	4.1
(2) AEXF 2mm <sup>2</sup>	2.75 +/- 0.05 [1.08 +/- .002]	4.9



- RECOMMENDED SPARE PARTS
- GREASE BEARING SURFACES LIGHTLY
- 3. LUBRICATE DAILY PER THE APPLICATOR INSTRUCTION SHEET SUPPLIED WITH THE APPLICATOR.
- APPLICATOR SPECIFIC DATA TO BE ENTERED INTO BLANK MEMORY CHIP AT ASSEMBLY. SEE BELOW FOR PART NUMBER:
  - PNEUMATIC FEED WITH "SMART APPLICATOR" CONVERSION: 8-2836001-4
  - SERVO FEED WITH "FINE CRIMP HEIGHT ADJUST": 8-2836001-5
  - SERVO FEED WITH "NON-CRIMP HEIGHT ADJUST": 8-2836001-6
- 5. ADJUSTMENT OF THE STRIPPER MAY BE REQUIRED WHEN MOVING THE APPLICATOR BETWEEN BENCH AND LEADMAKER APPLICATIONS.
- APPLY PART NUMBER 1-23419-5 LOCTITE TO THREADS OF ITEMS 62. APPLY PART NUMBER 2-23419-6 LOCTITE TO THREADS OF ITEM 242. FOR -6 ONLY APPLY PART NUMBER 1-23419-5 LOCTITE TO THREADS OF ITEMS 37.
- GREASE THREADS, GROOVE AND O-RING ON ITEMS 35 & 252.
- MAGNET, ITEM 166 MUST BE ORIENTED CORRECTLY IN ORDER TO PROPERLY ACTUATE THE COUNTER.
- CRIMP HEIGHT REFERENCE SETTING WAS THE SETTING USED WHEN THE APPLICATOR WAS QUALIFIED AT THE FACTORY. ADJUSTMENT MAY BE NECESSARY WHEN RUNNING APPLICATOR IN THE FIELD.
- TERMINAL PITCH NOT COMPATIBLE WITH MECHANICAL FEED.
- TO CONVERT THE APPLICATOR TO A NON-CARRIER CUTTING STYLE, REMOVE ITEM 13 AND ATTACH TO THE LOCATION ON THE BACK SIDE OF THE HOUSING. REFER TO INSTRUCTION SHEET FOR ADDITIONAL INFORMATION.
- WHEN ASSEMBLING A NON CRIMP HEIGHT ADJUST APPLICATOR (-6) USE SHIMS FROM ITEM 260 TO ACHIEVE A NOMINAL SHIM HEIGHT OF 2.95.
- TERMINAL LUBRICANT IS RECOMMENDED.

**\*WARNING**  
 ON INSTALLATION, SET WIRE DISC, ITEM 40 TO LARGEST WIRE SIZE SETTING. USE OF SETTINGS BELOW MINIMUM REQUIRED CRIMP HEIGHT SETTING WILL CAUSE DAMAGE TO CRIMP TOOLING.

- 2 2 2 2	2168083-1	SCR, SKT HD CAP, RoHS, M3 X 8.0	269
- 1 1 1 1	1-1633782-1	FENCE	267
- - 1 - -	2119957-2	APPLICATOR SHIM PACK	260
- 1 1 1 1	1803078-2	SPACER, PRECISION	259
- 1 - 1 1	8-21084-0	O-RING, .676 ID, .070 DIA. MAT.	252
- - - - 1	2119640-1	PUSH ROD, AIR FEED	250
-77 -7 -6 -5 -2	PART NO	DESCRIPTION	ITEM NO

**ATLANTIC VERSION**  
 Shown on sheets 1 of 4 & 2 of 4  
 (Pacific version shown on sheets 3 of 4 & 4 of 4)

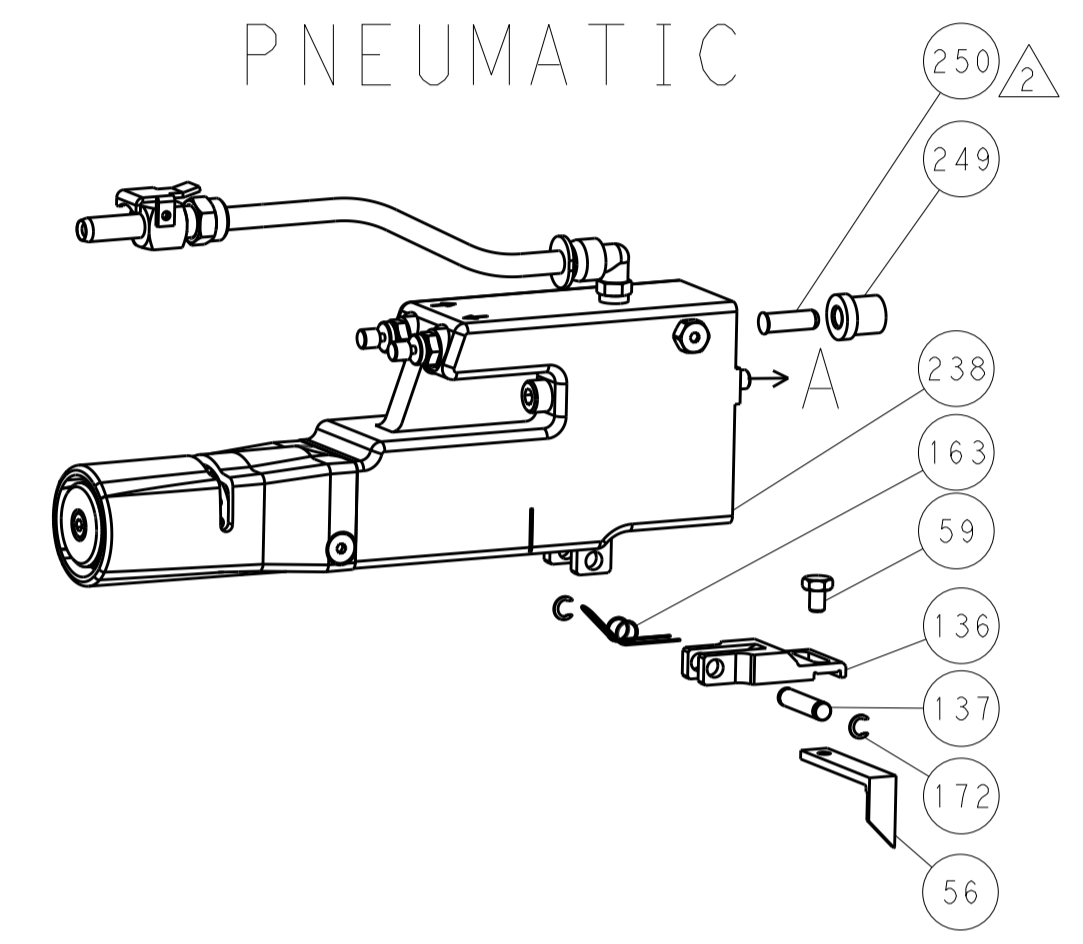
- - - - 1	2079988-1	BUSHING, LCH5-12, MISUMI	249
- - - - 1	2119641-1	FEED CAM, AIR FEED	248
- 1 - - 1	2119798-1	DETENT PIN	247
- 1 - 1 1	1-22279-3	SPRING, COMPRESSION	246
- - 1 - -	2161314-1	RAM, STEPPED, ATLANTIC, SF, NON-ADJ	245
- 1 1 1 1	2119082-3	CAM, SNAIL, INSULATION ADJUSTMENT	244
- 1 1 1 1	2079764-1	WASHER, WAVE SPRING, CREST-TO-CREST	243
- 1 1 1 1	2119083-1	RETAINER, INSULATION DIAL	242
- 1 1 1 1	7-18023-7	SCR, SKT HD CAP M3 X 4.0	241
- - 2 2 -	2168400-6	SHCS, LOW HEAD, RoHS, M5 X 16	240
- - - - 1	2063440-1	AIR FEED MODULE	238
- - 1 1 -	2119740-2	TAG, IDENTIFICATION	213
- - 1 1 -	1901094-3	SPACER, FEEDER	198
- - - - 2	21045-3	RING, RETAIN, EXTERN, 3/16 CRESCENT	172
- 1 1 1 1	994969-1	MAGNET, RARE EARTH HIGH ENERGY	166
- REF REF REF REF	994970-2	COUNTER, MAGNETIC	164
- - - - 1	240638-1	SPRING, FEED FINGER	163
- - - - 1	3-23627-7	PIN, RETAIN, GRVD, 3/16 X .854	137
- - - - 1	2119799-1	HOLDER, FEED FINGER, AF	136
- - REF REF -	SEE NOTE 4	MEMORY CHIP, PROGRAMMED	135
- - 1 1 -	1633743-1	SERVO FEED LATCH ASM	133
- - REF REF -	2119944-1	FEED FINGER ASSEMBLY, SF	117
- 1 1 1 1	2119955-1	ASSY, LUBRICATOR, SIDE FEED	113
- 1 1 1 1	679651-4	FRONT STRIP GUIDE	96
- 2 2 2 2	1-2168083-3	SCR, SKT HD CAP, RoHS, M3 X 16	95
- 1 1 1 1	455888-5	SPACER, CRIMPER	82
- 1 1 1 1	2119956-1	DOCUMENTATION PACKAGE	71
- 1 - - 1	2119740-1	TAG, IDENTIFICATION	67
- 2 2 2 2	2168078-1	SCREW, DRIVE, RH, RoHS, 2 x .188	66
- 1 - 1 1	2119793-1	LIMITER, ADJUSTMENT BOLT	63
- 3 - 3 3	992763-5	SCR, SET, SOC, CONE POINT, M3 X 4.0	62
- 2 2 2 2	2-18032-5	SCR, SET, FLT POINT M5 X 20.0	61
- 1 1 1 1	2079383-4	SCR, BHSC, RoHS (M4 X 8)	60
- - - - 1	5-18022-5	SCR, HEX HD CAP, M4 X 6.0	59
- - - - 1	1-1338683-1	FEED PAWL	56
- 4 4 4 4	2168400-1	SHCS, LOW HEAD, RoHS, M4 X 12	54
- 2 2 2 2	1-2168083-0	SCR, SKT HD CAP, RoHS, M4 X 10	53
- 1 1 1 1	5018030-1	NUT, HEX, REG, RoHS, M3	52
- 1 1 1 1	811242-5	BUMPER, HOLD DOWN	51
- 1 1 1 1	690753-2	SPACER, TONKER	50
- - - - 1	18023-9	SCR, SKT HD CAP M4 X 6.0	49
- 1 1 1 1	2119656-9	APPLICATOR BASIC ASSEMBLY, SF	46
- 1 - 1 1	2161311-1	RAM, STEPPED, AMP STYLE, SIDE FEED	44
- 1 1 1 1	1-2079383-5	SCR, BHSC, RoHS (M8 X 40)	41
- 1 - 1 1	2119645-1	DISC, NUMBERED FA WIRE ADJUSTMENT	40
- 1 - 1 1	2119957-1	APPLICATOR SHIM PACK	39
- 1 1 1 1	1-2119644-3	RAM WASHER, PRECISION	38
- 1 1 1 1	2119085-1	FA HEAD, ATLANTIC STYLE	37
- 1 - 1 1	2119092-1	BOLT, ADJUSTMENT	35
- 1 1 1 1	4-1752356-5	SUPPORT, TERMINAL	34
- 1 1 1 1	2161328-1	HEX HEAD, FLANGED, M5 X 8mm LONG	32
- 1 1 1 1	2119959-3	ASSEMBLY, STRIP GUIDE	29
- 1 1 1 1	455888-3	SPACER, CRIMPER	28
- 2 2 2 2	22283-1	SPRING, COMPRESSION	27
- 1 1 1 1	356835-1	LEVER, DRAG RELEASE	26
- 1 1 1 1	240792-1	DRAG, TERMINAL	25
- 1 1 1 1	980371-4	SCR, SKT HD SHLDR 5.0 DIA X 6.0	23
- 1 1 1 1	2168083-2	SCR, SKT HD CAP, RoHS, M4 X 8.0	21
- 2 2 2 2	1-18028-2	WASHER, FLAT, REG M4	20
- 1 1 1 1	2119533-1	STRIPPER, SIDE FEED	19
- 1 1 1 1	2119806-1	INSERT, SHEAR	13
- 1 1 1 1	3-22280-3	SPRING, COMPRESSION	12
- 1 1 1 1	1-356885-3	STOP, SHEAR	11
- 1 1 1 1	2119805-1	SHEAR HOLDER, FRONT	10
- 1 1 1 1	454276-5	FLOATING SHEAR, FRONT	9
1 1 1 1 1	4-1633930-4	ANVIL, COMBINATION	8
- - - - -	-	-	7
- - - - -	-	-	6
- 1 1 1 1	1-2119757-0	DEPRESSOR, SHEAR	5
- 1 1 1 1	3-238011-1	BLOCK, CRIMPER SPACER	4
1 1 1 1 1	6-1803016-8	CRIMPER, INSULATION F	3
- 1 1 1 1	2-455888-4	SPACER, CRIMPER	2
1 1 1 1 1	7-1633664-7	CRIMPER, WIRE	1
-77 -7 -6 -5 -2	PART NO	DESCRIPTION	ITEM NO

DIMENSIONS:	TOLERANCES UNLESS OTHERWISE SPECIFIED:	OWN	CHK	DATE	NAME	SIZE	CAGE CODE	DRAWING NO	RESTRICTED TO	
mm	0 PLC ± 1 PLC ± 2 PLC ± 3 PLC ± 4 PLC ± ANGLES ±	STC	HOU	24SEP2015						Ocean Side Feed Applicator
mm	FINISH ±	L. ZHANG	U. GUO	24SEP2015						
MATERIAL		Customer Accessible Production Drawing			SCALE	1:2	SHEET	1 of 4	REV	A

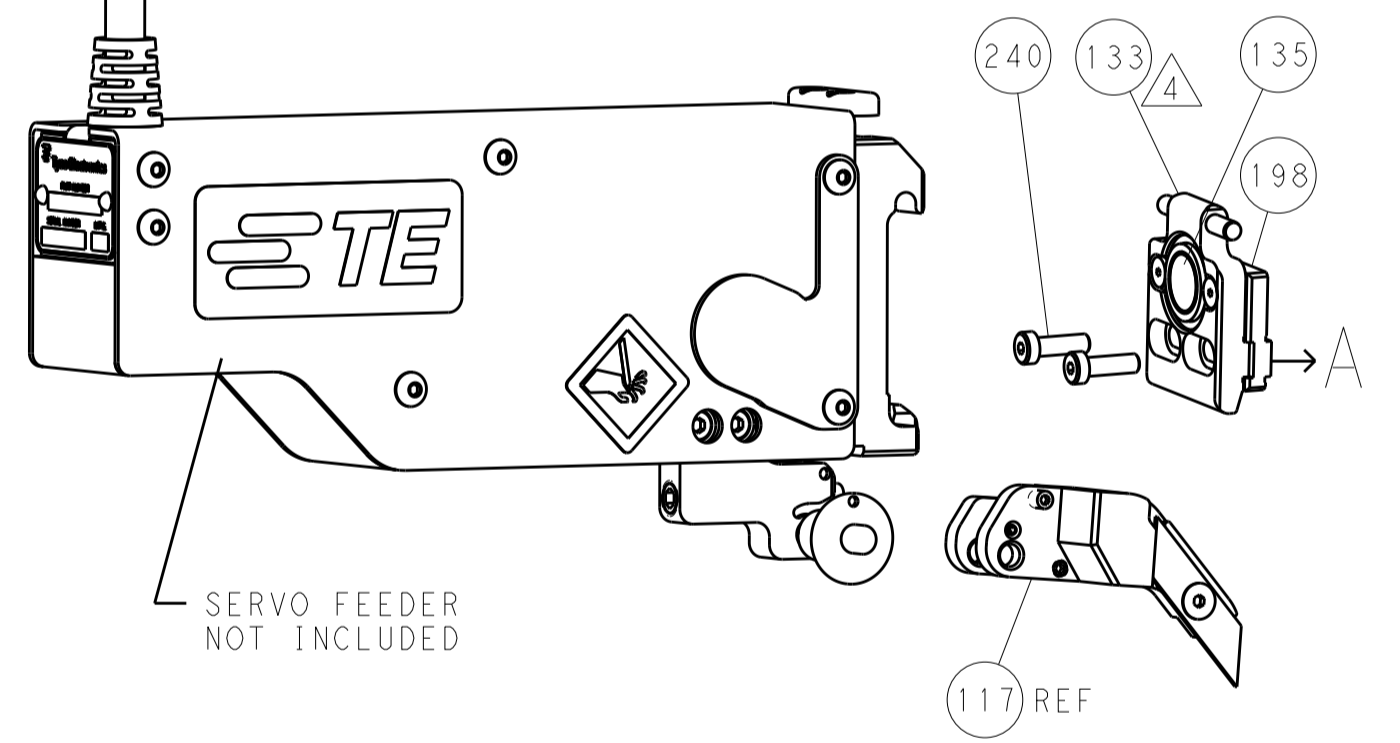
LOC		DIST		REVISIONS			
P	LTN	DESCRIPTION	DATE	DWN	APVD		
A	66	SEE SHEET 1					

### FEED TYPE

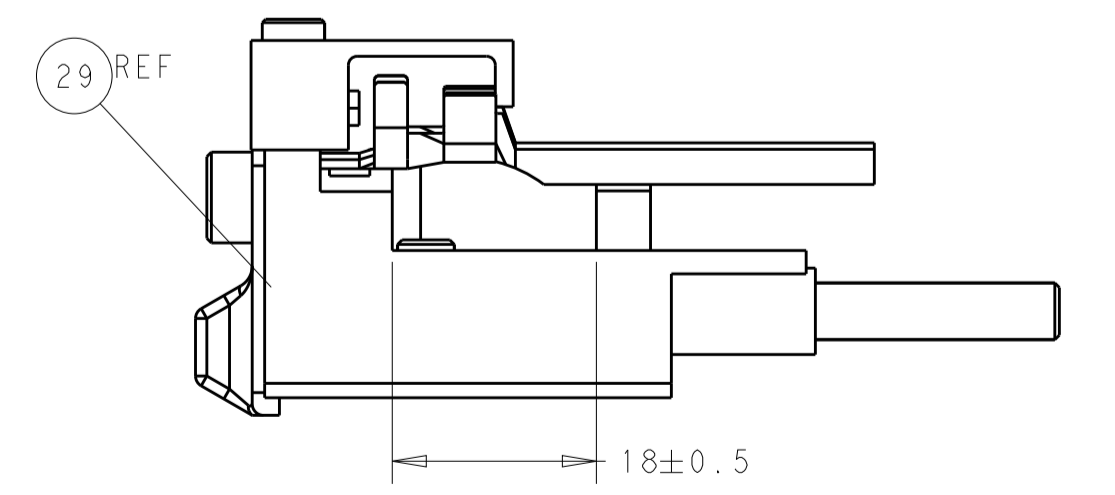
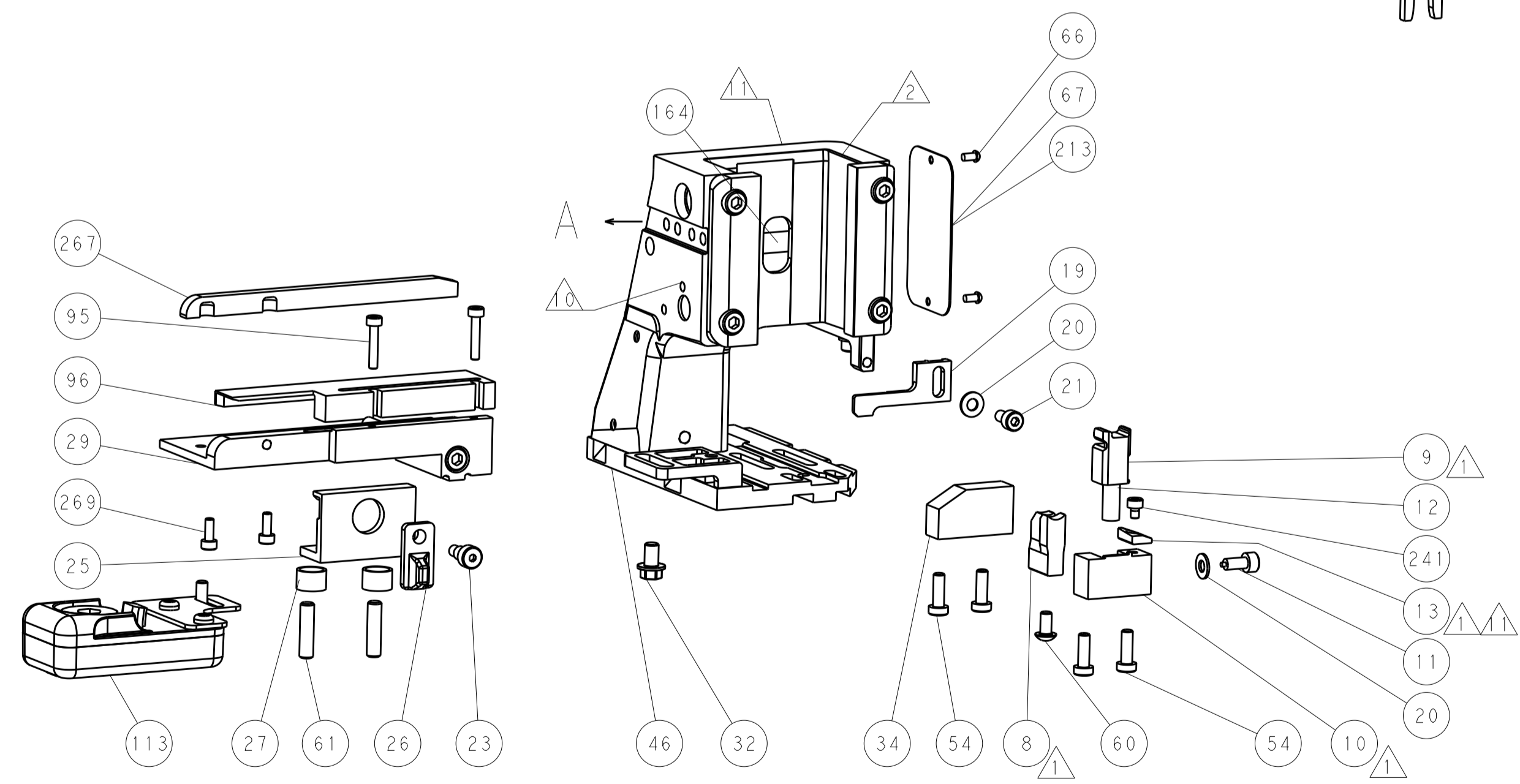
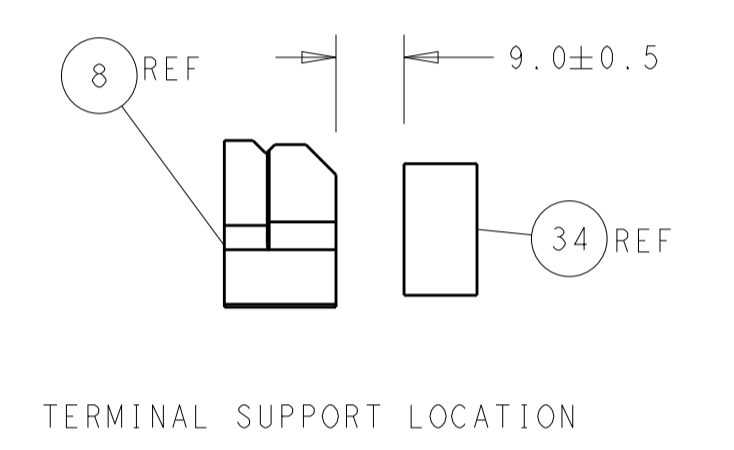
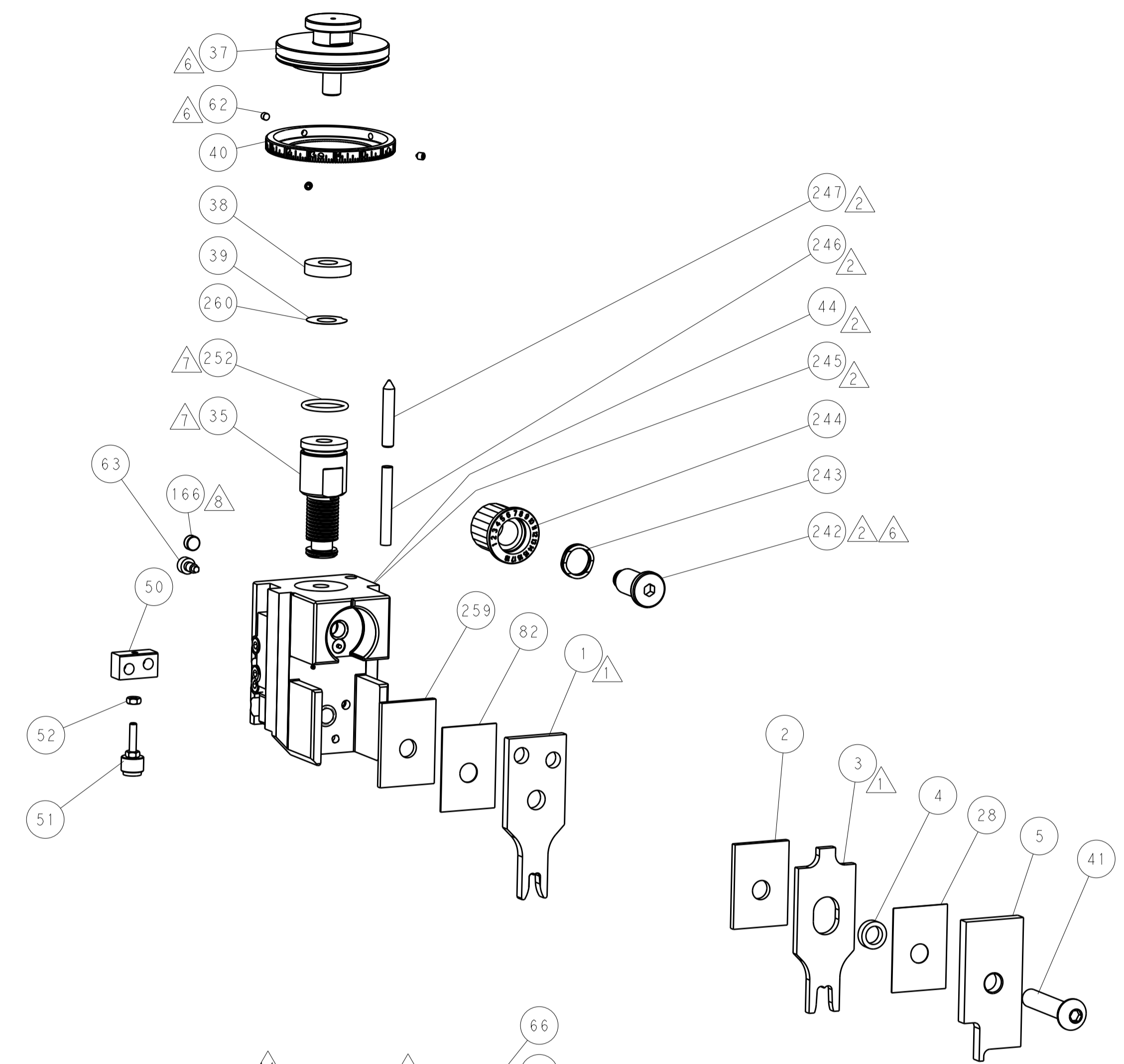
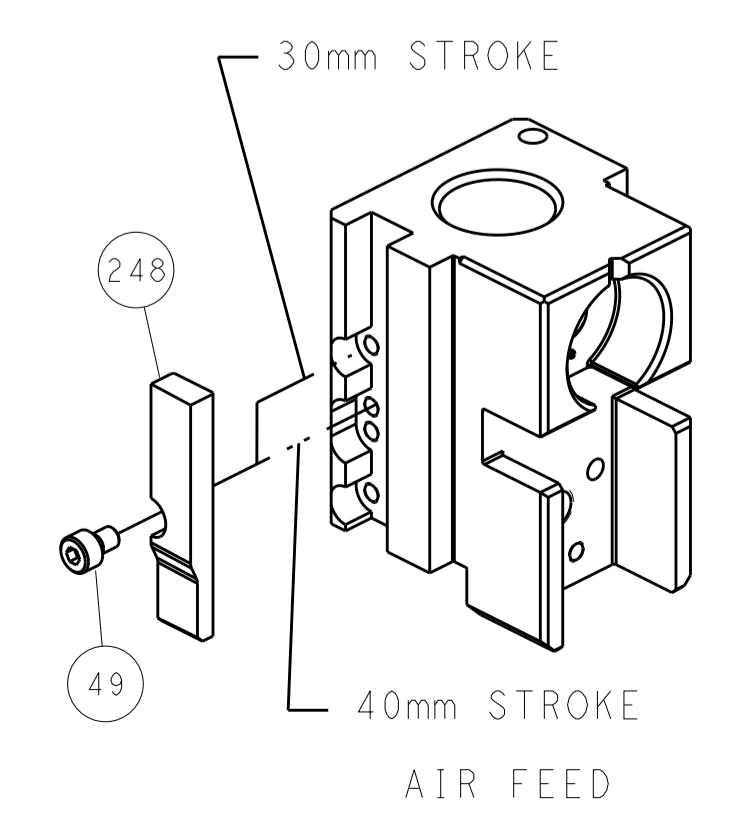
### PNEUMATIC



### SERVO LATCH PLATE



### CAM POSITION



**ATLANTIC VERSION**  
 Shown on sheets 1 of 4 & 2 of 4  
 (Pacific version shown on sheets 3 of 4 & 4 of 4)

DIMENSIONS:		TOLERANCES UNLESS OTHERWISE SPECIFIED:		DWN J. HOU 24SEP2015		TE Connectivity	
mm	0 PLC ±	1 PLC ±	2 PLC ±	3 PLC ±	4 PLC ±	ANGLES ±	TE Connectivity Harrisburg, PA 17105-3608
MATERIAL	FINISH	WEIGHT	SCALE	SIZE	CAGE CODE	DRAWING NO	RESTRICTED TO
			1:2	A1	00779	©=2836001	
Customer Accessible Production Drawing				SHEET	2	OF 4	REV A

PACIFIC VERSION TERMINATOR INTERFACE ADAPTER	PART NUMBER	REVISION	DESCRIPTION	FEED TYPE
	2-2836001-2	A	FINE CRIMP HEIGHT ADJUST	PNEUMATIC
	2-2836001-5	A	FINE CRIMP HEIGHT ADJUST	SERVO LATCH PLATE <sup>4</sup>
	2-2836001-7	A	FINE CRIMP HEIGHT ADJUST	NONE
	7-2836001-7	A	CRIMP TOOLING KIT	-

APPLICATOR DATA		
CRIMP SIZE	TYPE	
WIRE 5.08 mm [1.200]	F	
INSUL 7.37 mm [1.290]	F	
APPLICATOR INSTRUCTIONS 408-10389		

TERMINAL DATA: KET TERMINAL KET CRIMP SPECIFICATION	
TERMINAL NAME: TERMINAL, EARTH RING	
WIRE STRIP LENGTH 6.50-7.00 mm [1.256-.276 IN]	INSULATION DIAMETER RANGE $\varnothing$ 3.68-4.90 mm [1.145-.193 IN]
TERMINAL APPLICATION SPECIFICATION ST710986-3 Rev 11/29/11	
TERMINALS APPLIED <sup>1</sup> <sub>0</sub> <sup>2</sup> <sub>2</sub>	
TE TERMINAL 2113864-1	KET TERMINAL ST710986-3

WIRE SIZE	CRIMP HEIGHT mm [INCH]	CRIMP HEIGHT REFERENCE SETTING
AEXF 5mm <sup>2</sup>	2.85 +/- 0.05 [1.112 +/- .002]	4.1
(2) AEXF 2mm <sup>2</sup>	2.75 +/- 0.05 [1.108 +/- .002]	4.9



- <sup>1</sup> RECOMMENDED SPARE PARTS
- <sup>2</sup> GREASE BEARING SURFACES LIGHTLY
3. LUBRICATE DAILY PER THE APPLICATOR INSTRUCTION SHEET SUPPLIED WITH THE APPLICATOR.
- <sup>4</sup> APPLICATOR SPECIFIC DATA TO BE ENTERED INTO BLANK MEMORY CHIP AT ASSEMBLY. SEE BELOW FOR PART NUMBER:  
PNEUMATIC FEED WITH "SMART APPLICATOR" CONVERSION: 8-2836001-4  
SERVO FEED WITH "FINE CRIMP HEIGHT ADJUST": 8-2836001-5
5. ADJUSTMENT OF THE STRIPPER MAY BE REQUIRED WHEN MOVING THE APPLICATOR BETWEEN BENCH AND LEADMAKER APPLICATIONS.
- <sup>6</sup> APPLY PART NUMBER 1-23419-5 LOCTITE TO THREADS OF ITEMS 62.  
APPLY PART NUMBER 2-23419-6 LOCTITE TO THREADS OF ITEM 242.
- <sup>7</sup> GREASE THREADS, GROOVE AND O-RING ON ITEMS 139 & 152.
- <sup>8</sup> MAGNET MUST BE ORIENTED CORRECTLY IN ORDER TO PROPERLY ACTUATE THE COUNTER.
- <sup>9</sup> CRIMP HEIGHT REFERENCE SETTING WAS THE SETTING USED WHEN THE APPLICATOR WAS QUALIFIED AT THE FACTORY. ADJUSTMENT MAY BE NECESSARY WHEN RUNNING APPLICATOR IN THE FIELD.
- <sup>10</sup> TERMINAL PITCH NOT COMPATIBLE WITH MECHANICAL FEED.
- <sup>11</sup> TO CONVERT THE APPLICATOR TO A NON-CARRIER CUTTING STYLE, REMOVE ITEM 13 AND ATTACH TO THE LOCATION ON BACK SIDE OF THE HOUSING. REFER TO INSTRUCTION SHEET FOR ADDITIONAL INFORMATION.
- <sup>12</sup> TERMINAL LUBRICANT IS RECOMMENDED.

**\*WARNING**  
ON INSTALLATION, SET WIRE DISC, ITEM 40 TO LARGEST WIRE SIZE SETTING. USE OF SETTINGS BELOW MINIMUM REQUIRED CRIMP HEIGHT SETTING WILL CAUSE DAMAGE TO CRIMP TOOLING.

-77	-27	-25	-22	PART NO	DESCRIPTION	ITEM NO
-	2	2	2	2168083-1	SCR, SKT HD CAP, RoHS, M3 X 8.0	269
-	1	1	1	1-1633782-1	FENCE	267
-	1	1	1	1803078-2	SPACER, PRECISION	259
-	1	1	1	2119782-1	FINE ADJUST HEAD ASM, PACIFIC STYLE	251

**PACIFIC VERSION**  
Shown on sheets 3 of 4 & 4 of 4  
(Atlantic version shown on sheets 1 of 4 & 2 of 4)

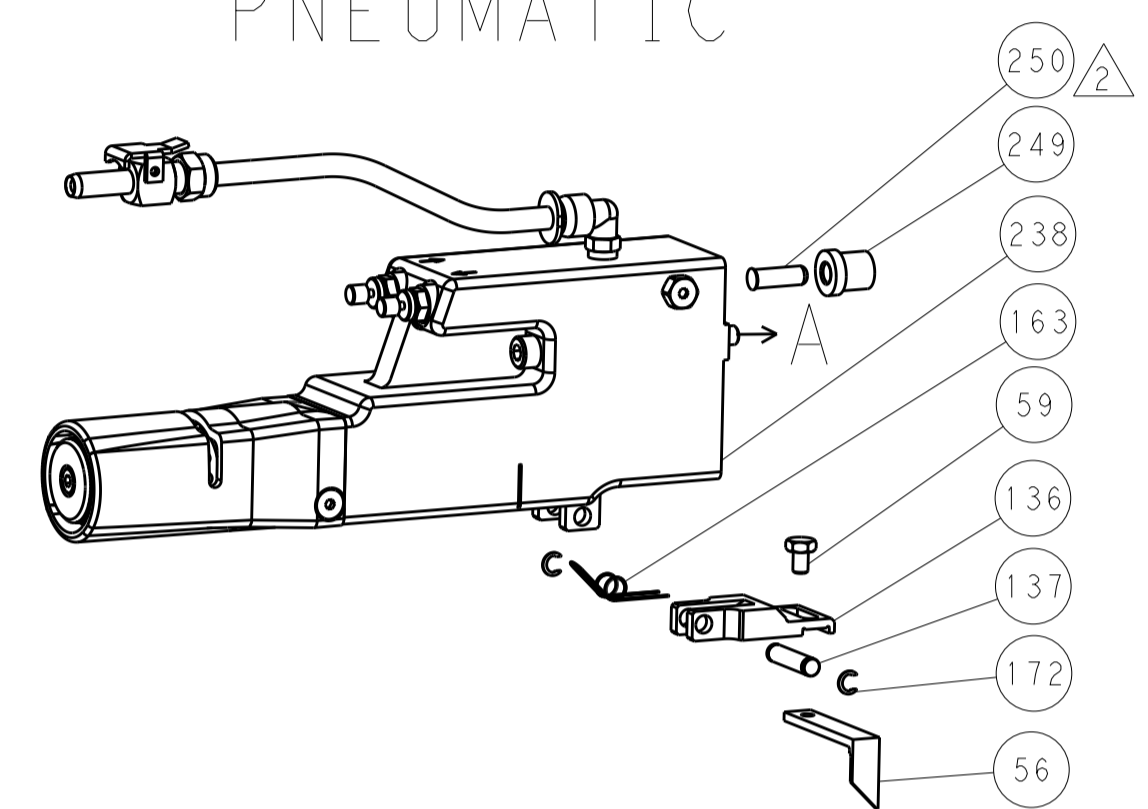
SET UP GAUGE	LOC	DIST	REVISIONS					
2119599-1	A	66	P	LTN	DESCRIPTION	DATE	OWN	APVD
			-	-	SEE SHEET 1	-	-	-

-	-	-	1	2119640-1	PUSH ROD, AIR FEED	250
-	-	-	1	2079988-1	BUSHING, LCH5-12, MISUMI	249
-	1	1	1	1-22279-3	SPRING, COMPRESSION	246
-	1	1	1	2119082-3	CAM, SNAIL, INSULATION ADJUSTMENT	244
-	1	1	1	2079764-1	WASHER, WAVE SPRING, CREST-TO-CREST	243
-	1	1	1	2119083-1	RETAINER, INSULATION DIAL	242
-	1	1	1	7-18023-7	SCR, SKT HD CAP M3 X 4.0	241
-	-	2	-	2168400-6	SHCS, LOW HEAD, RoHS, M5 X 16	240
-	-	-	1	2063440-1	AIR FEED MODULE	238
-	-	-	1	2119740-2	TAG, IDENTIFICATION	213
-	-	-	1	1901094-3	SPACER, FEEDER	198
-	-	-	2	21045-3	RING, RETAIN, EXTERN, 3/16 CRESCENT	172
-	1	1	1	994969-1	MAGNET, RARE EARTH HIGH ENERGY	166
-	REF	REF	REF	994970-2	COUNTER, MAGNETIC	164
-	-	-	1	240638-1	SPRING, FEED FINGER	163
-	1	1	1	8-21084-1	O-RING, .801 ID, .070 DIA. MAT.	152
-	-	-	1	2119641-2	FEED CAM, AIR FEED	151
-	1	1	1	2119798-2	DETENT PIN	145
-	1	1	1	2079383-8	SCR, BHSC, RoHS (M4 X 16)	144
-	4	4	4	2168400-5	SHCS, LOW HEAD, RoHS, M4 X 20	143
-	1	1	1	1-2119656-0	APPLICATOR BASIC ASSEMBLY, SF	141
-	1	1	1	2161312-1	RAM, STEPPED, ASIAN STYLE, SIDE FEED	140
-	1	1	1	2119092-2	BOLT, ADJUSTMENT	139
-	-	-	1	3-23627-7	PIN, RETAIN, GRVD, 3/16 X .854	137
-	-	-	1	2119799-1	HOLDER, FEED FINGER, AF	136
-	-	REF	-	SEE NOTE 4	MEMORY CHIP, PROGRAMMED	135
-	-	-	1	1633743-1	SERVO FEED LATCH ASM	133
-	-	REF	-	2119944-1	FEED FINGER ASSEMBLY, SF	117
-	1	1	1	2119955-1	ASSY, LUBRICATOR, SIDE FEED	113
-	1	1	1	679651-4	FRONT STRIP GUIDE	96
-	2	2	2	1-2168083-3	SCR, SKT HD CAP, RoHS, M3 X 16	95
-	1	1	1	455888-5	SPACER, CRIMPER	82
-	1	1	1	2119956-1	DOCUMENTATION PACKAGE	71
-	1	-	1	2119740-1	TAG, IDENTIFICATION	67
-	2	2	2	2168078-1	SCREW, DRIVE, RH, RoHS, 2 x .188	66
-	1	1	1	2119793-1	LIMITER, ADJUSTMENT BOLT	63
-	3	3	3	992763-5	SCR, SET, SOC, CONE POINT, M3 x 4.0	62
-	2	2	2	2-18032-5	SCR, SET, FLT POINT M5 X 20.0	61
-	-	-	1	5-18022-5	SCR, HEX HD CAP, M4 X 6.0	59
-	-	-	1	1-1338683-1	FEED PAWL	56
-	2	2	2	1-2168083-0	SCR, SKT HD CAP, RoHS, M4 X 10	53
-	1	1	1	5018030-1	NUT, HEX, REG, RoHS, M3	52
-	1	1	1	811242-5	BUMPER, HOLD DOWN	51
-	1	1	1	690753-2	SPACER, TONKER	50
-	-	-	1	18023-9	SCR, SKT HD CAP M4 X 6.0	49
-	1	1	1	1-2079383-5	SCR, BHSC, RoHS (M8 X 40)	41
-	1	1	1	2119645-1	DISC, NUMBERED FA WIRE ADJUSTMENT	40
-	1	1	1	2119957-1	APPLICATOR SHIM PACK	39
-	1	1	1	1-2119644-3	RAM WASHER, PRECISION	38
-	1	1	1	4-1752356-5	SUPPORT, TERMINAL	34
-	1	1	1	2161328-1	HEX HEAD, FLANGED, M5 x 8mm LONG	32
-	1	1	1	2119959-3	ASSEMBLY, STRIP GUIDE	29
-	1	1	1	455888-3	SPACER, CRIMPER	28
-	2	2	2	22283-1	SPRING, COMPRESSION	27
-	1	1	1	356835-1	LEVER, DRAG RELEASE	26
-	1	1	1	240792-1	DRAG, TERMINAL	25
-	1	1	1	980371-4	SCR, SKT HD SHLDR 5.0 DIA X 6.0	23
-	1	1	1	2168083-2	SCR, SKT HD CAP, RoHS, M4 X 8.0	21
-	2	2	2	1-18028-2	WASHER, FLAT, REG M4	20
-	1	1	1	2119533-1	STRIPPER, SIDE FEED	19
-	1	1	1	2119806-1	INSERT, SHEAR	13
-	1	1	1	3-22280-3	SPRING, COMPRESSION	12
-	1	1	1	1-356885-3	STOP, SHEAR	11
-	1	1	1	2119805-1	SHEAR HOLDER, FRONT	10
-	1	1	1	454276-5	FLOATING SHEAR, FRONT	9
-	1	1	1	4-1633930-4	ANVIL, COMBINATION	8
-	-	-	-	-	-	7
-	-	-	-	-	-	6
-	1	1	1	1-2119757-0	DEPRESSOR, SHEAR	5
-	1	1	1	3-238011-1	BLOCK, CRIMPER SPACER	4
-	1	1	1	6-1803016-8	CRIMPER, INSULATION F	3
-	1	1	1	2-455888-4	SPACER, CRIMPER	2
-	1	1	1	7-1633664-7	CRIMPER, WIRE	1

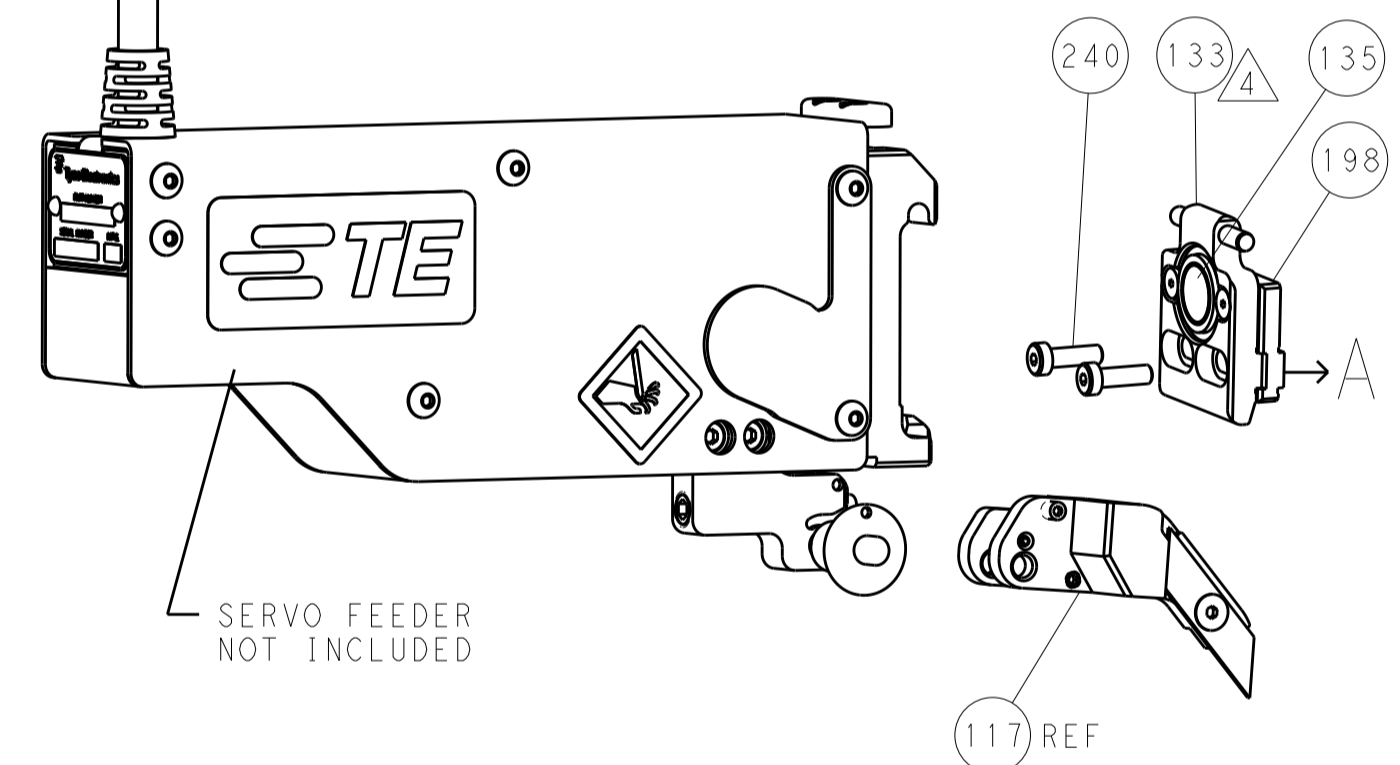
DIMENSIONS:		TOLERANCES UNLESS OTHERWISE SPECIFIED:		MATERIAL:		FINISH:		WEIGHT:		SCALE:	
mm	0 PLC ±	1 PLC ±	2 PLC ±	3 PLC ±	4 PLC ±	ANGLES ±	FINISH			Customer Accessible Production Drawing	SCALE 1:2 SHEET 3 OF 4 REV A

LOC		DIST		REVISIONS			
A	66	P	LTM	DESCRIPTION	DATE	OWN	APVD
		-		SEE SHEET 1			

### FEED TYPE PNEUMATIC



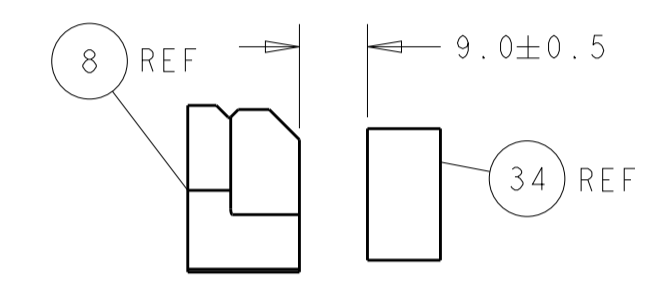
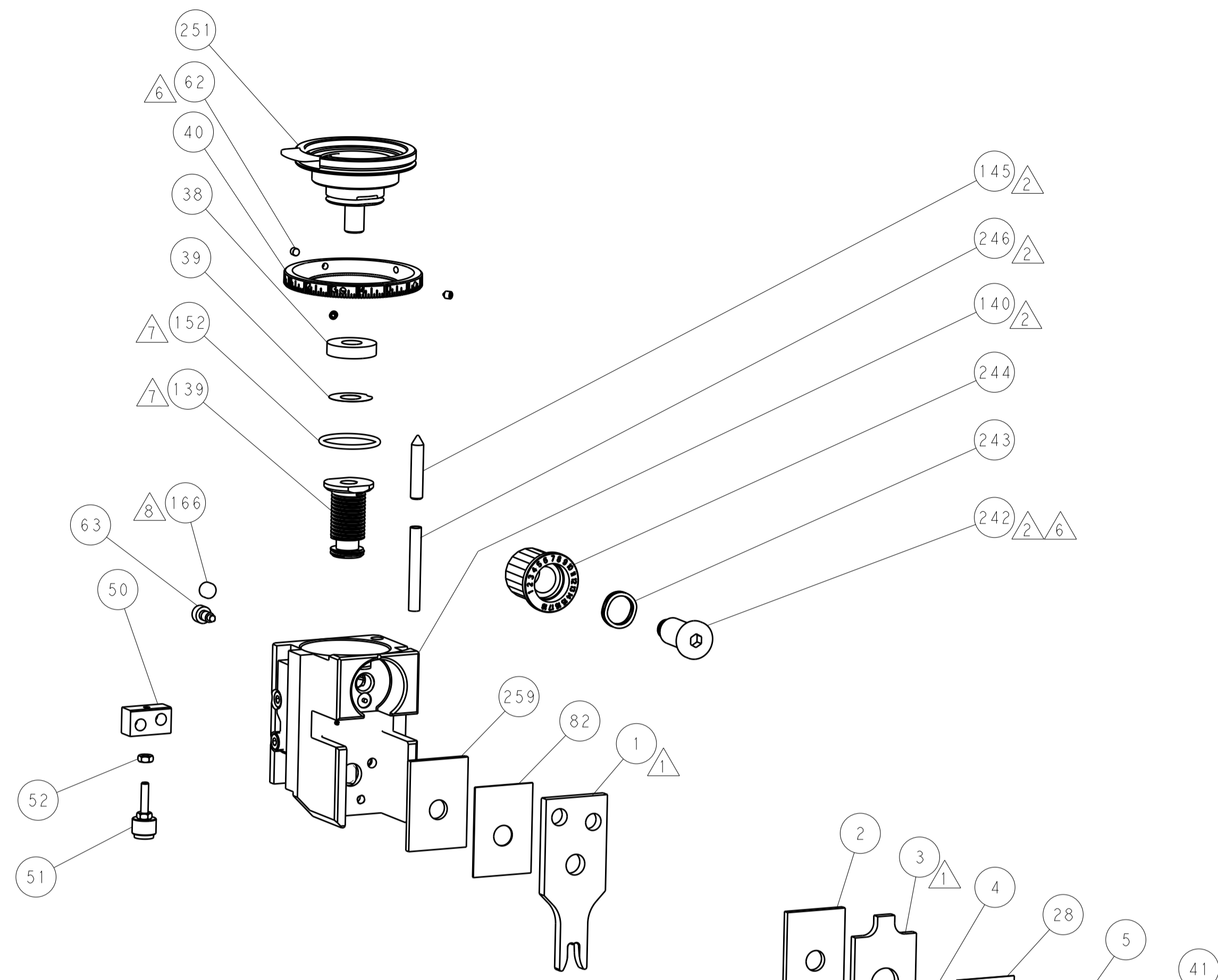
### SERVO LATCH PLATE



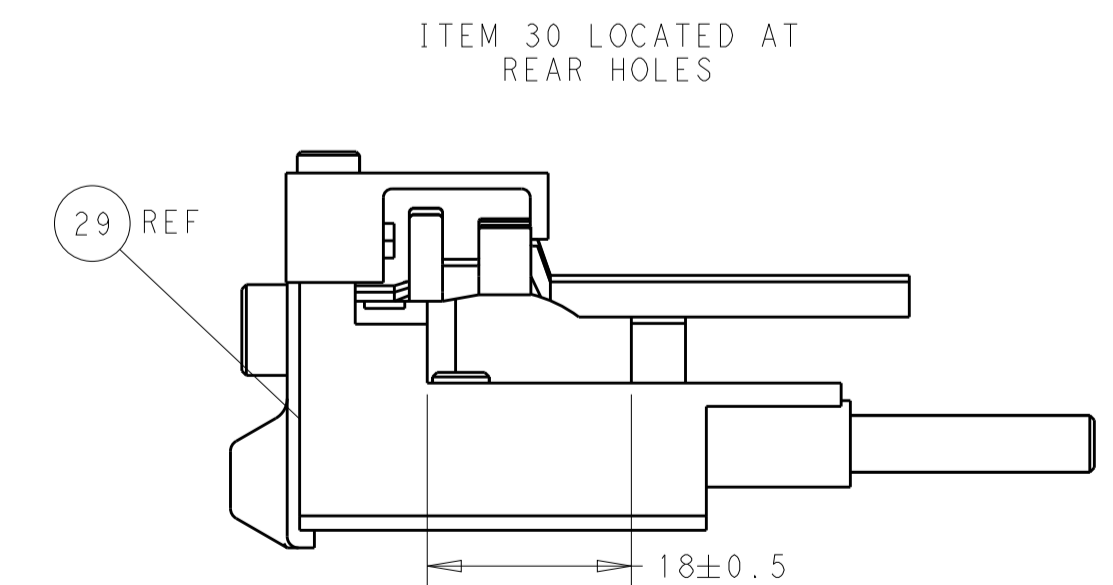
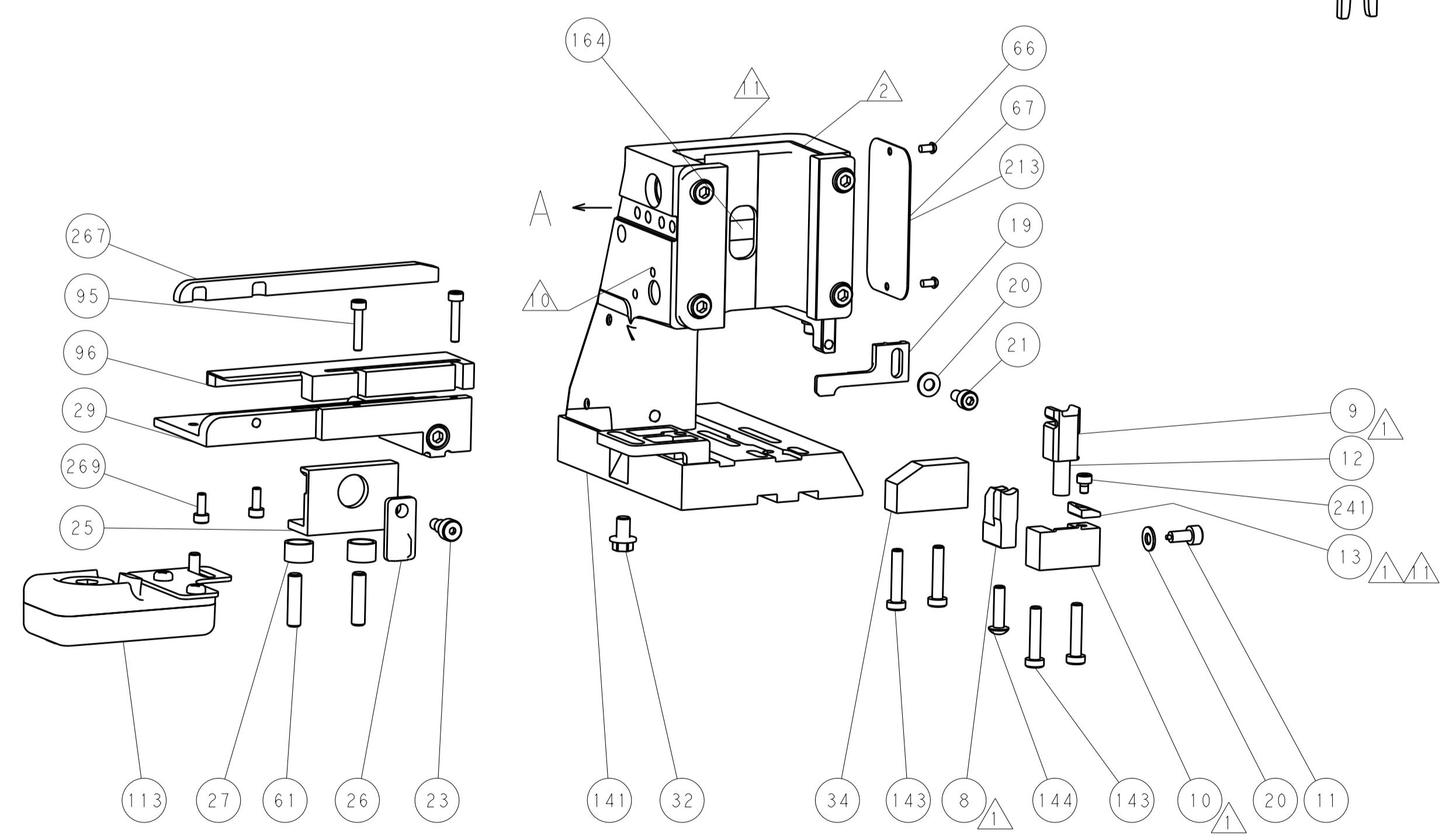
### CAM POSITION



AIR FEED



TERMINAL SUPPORT LOCATION



FEED TRACK POSITION  
GUIDE BY INSULATION BARREL

**PACIFIC VERSION**  
 Shown on sheets 3 of 4 & 4 of 4  
 (Atlantic version shown on sheets 1 of 4 & 2 of 4)

DIMENSIONS:		TOLERANCES UNLESS OTHERWISE SPECIFIED:		DWG: J. HOU 24SEP2015		CHK: L. ZHANG 24SEP2015		APVD: H. GUO 24SEP2015		NAME: Ocean Side Feed Applicator	
mm	0 PLC	±		SIZE	CAGE CODE	DRAWING NO	RESTRICTED TO	STE TE Connectivity Harrisburg, PA 17105-3608			
	1 PLC	±		SCALE	1:2	00779	©=2836001	Customer Accessible Production Drawing			
	2 PLC	±		SHEET	4	OF	4	REV A			
	3 PLC	±		SHEETS 1 & 2 ARE NOT REQUIRED FOR PACIFIC VERSION							
	4 PLC	±									
	ANGLES	±									
MATERIAL	FINISH										