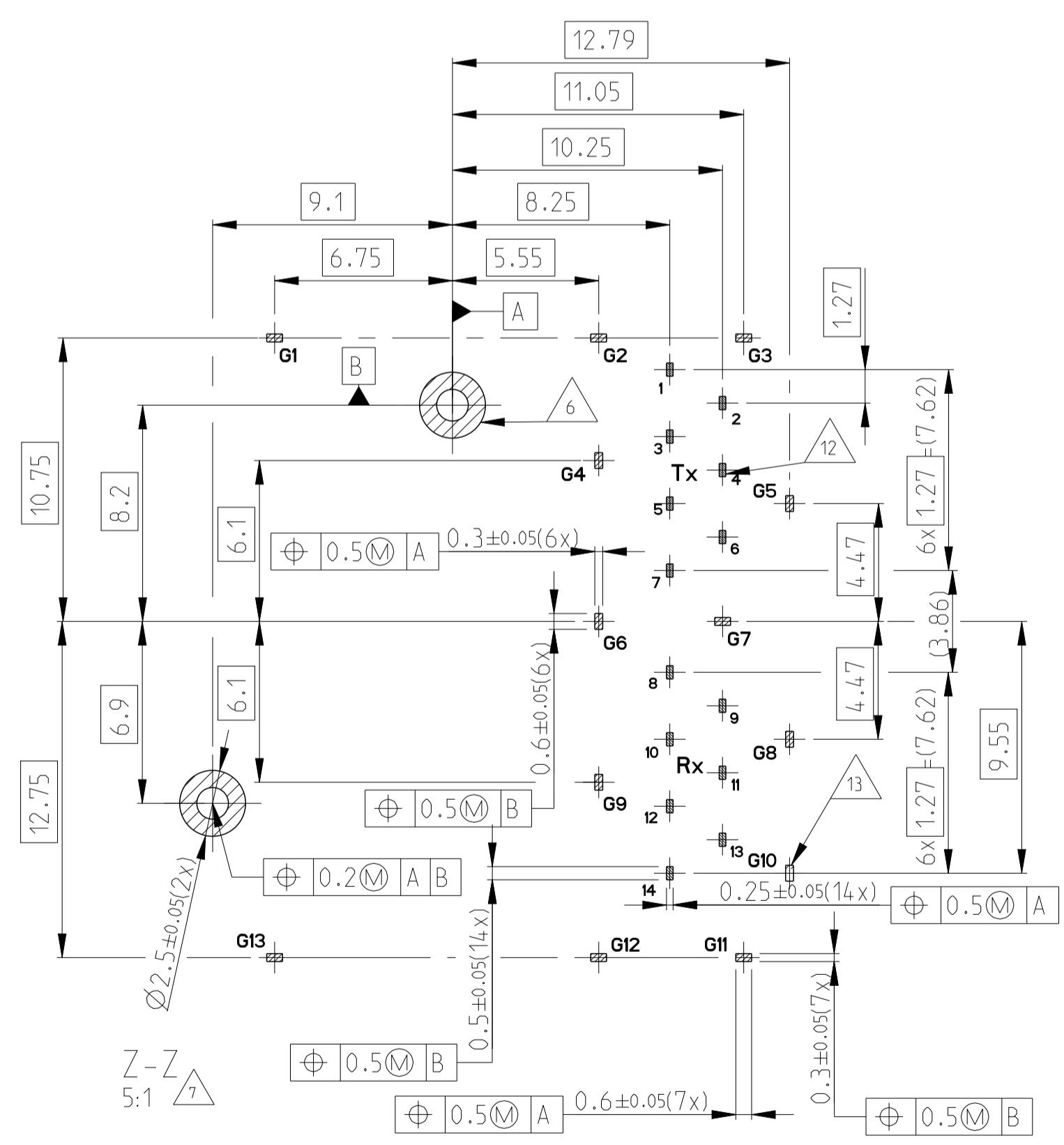
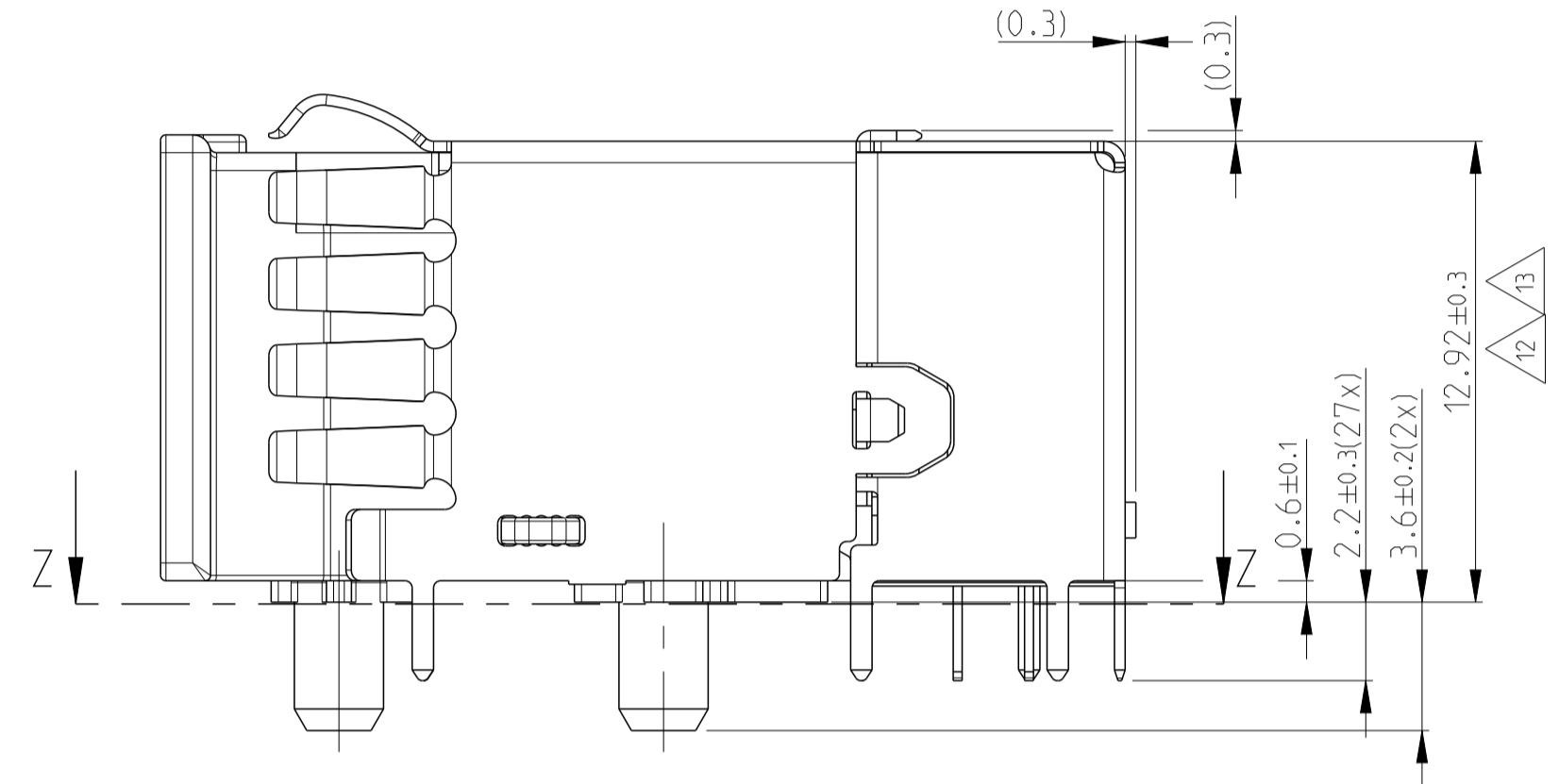
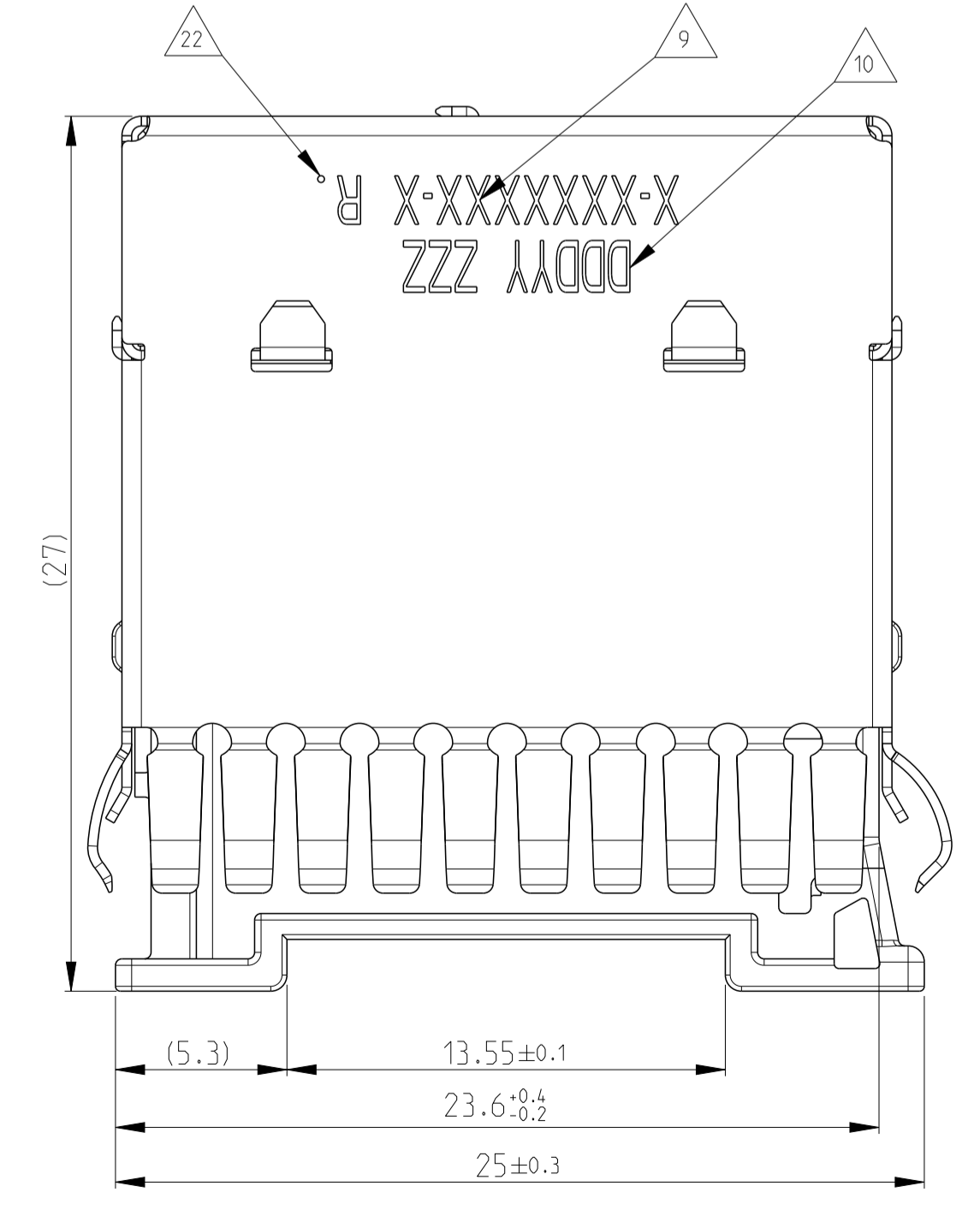
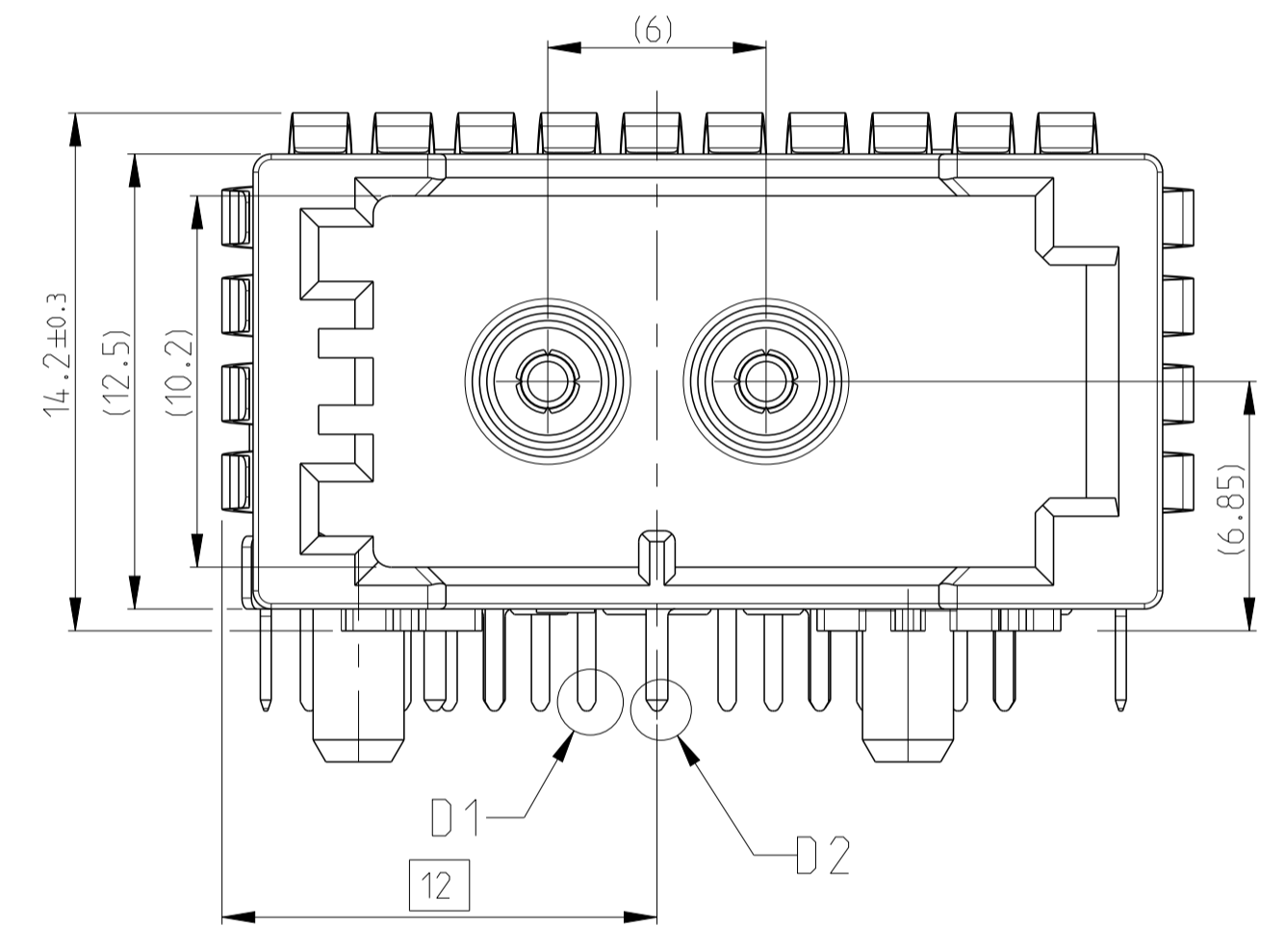
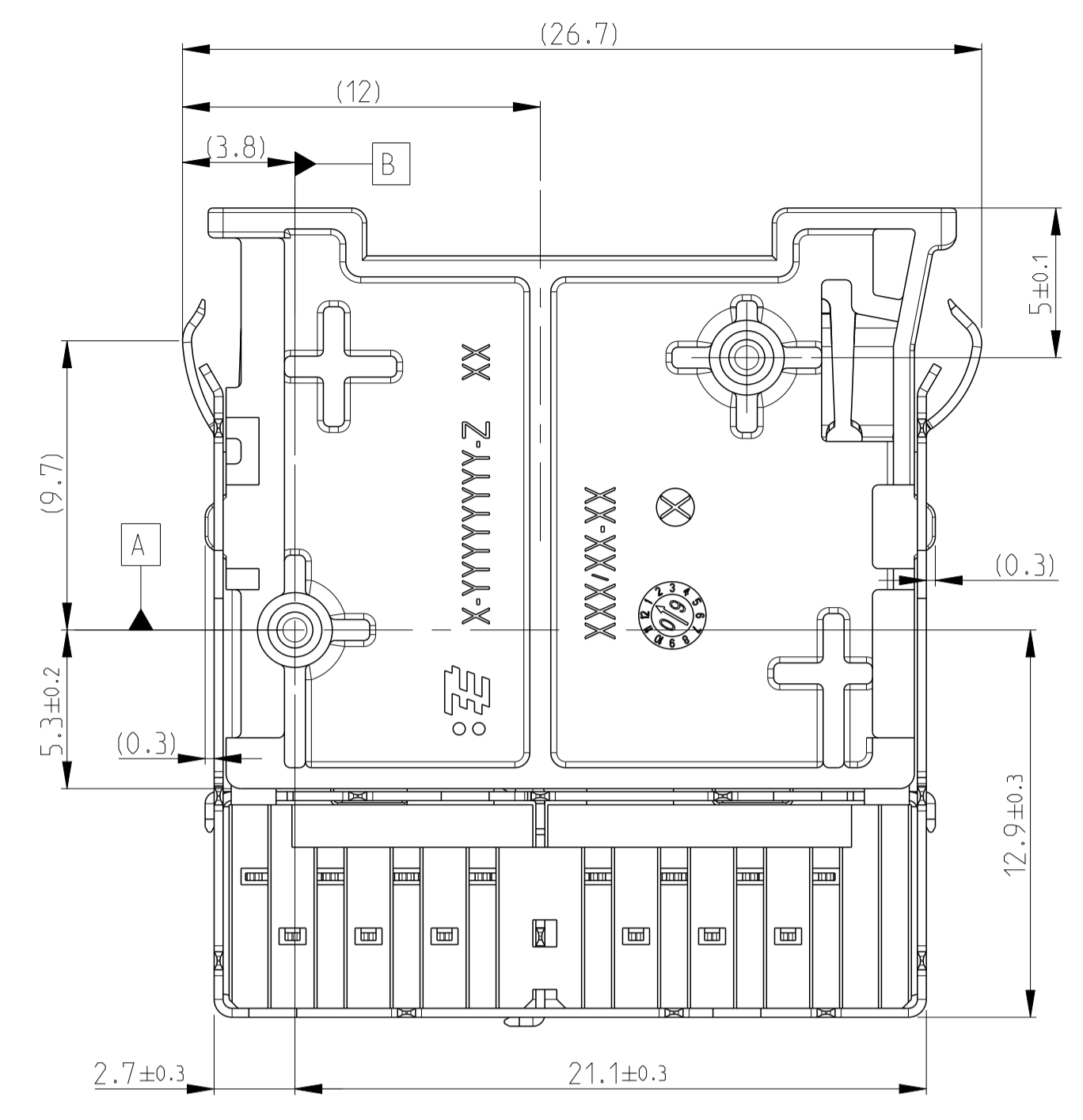


Staubschutzkappe nicht dargestellt  
 DUST COVER NOT SHOWN

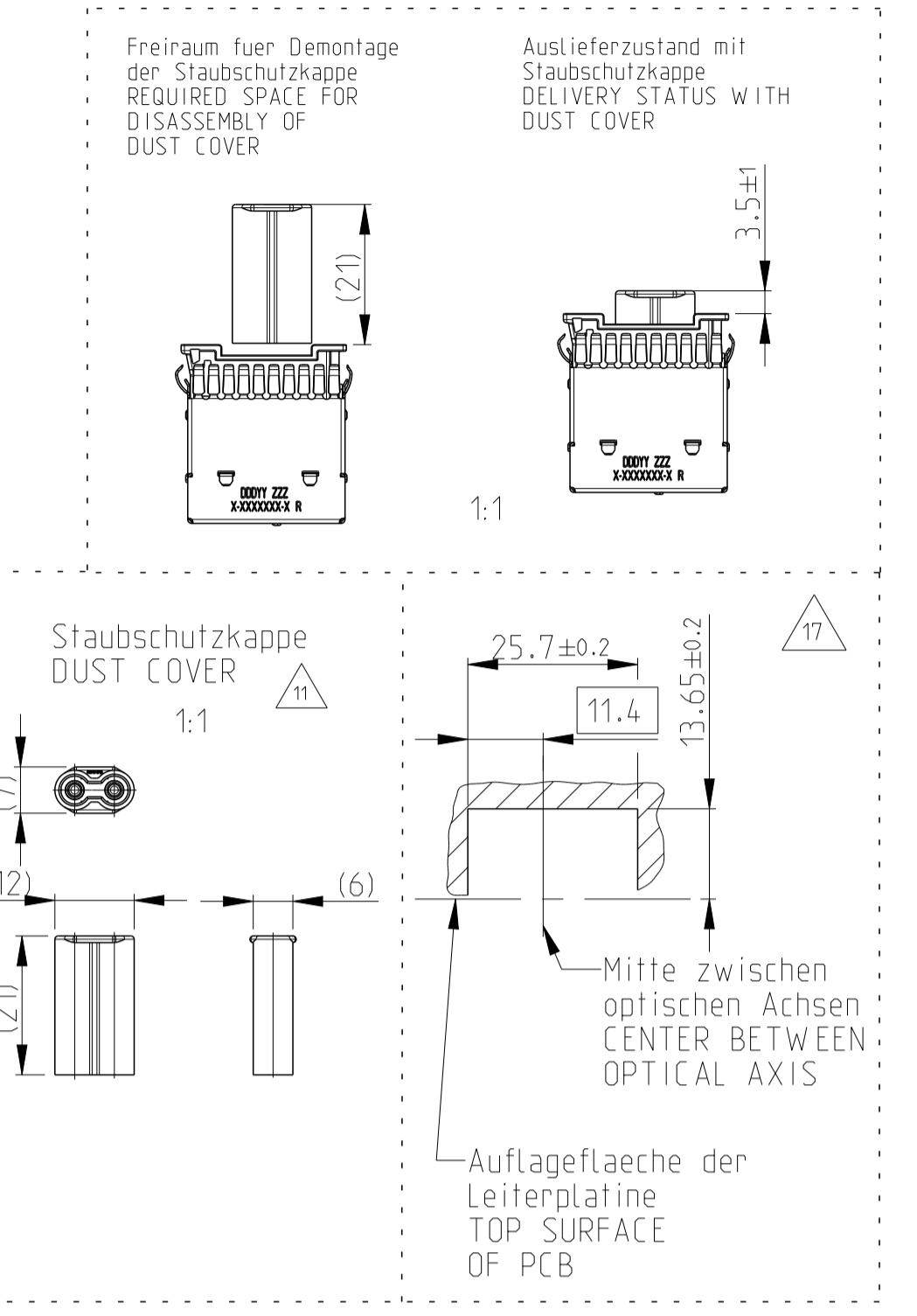


Pin Pos	Belegung ASSIGNMENT
1	/RST
2	REXT
3	IN-
4	IN+
5	GND
6	VCC
7	-3dB
8	STATUS
9	VCC
10	GND
11	OUT-
12	OUT+
13	REXT
14	VCC
EMI-Shield	GND



MOST 2+0 INTERFACE CODINGS

Code B	Code C	Code D	Code E	Code Z
--------	--------	--------	--------	--------

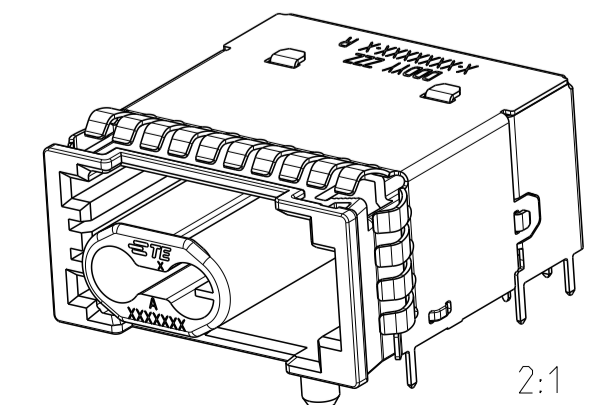


REV.	DESCRIPTION	DATE	OWN	APVD
A1	E-14-015617	200CT2014	RW	MR
B	E-15-014990	14OCT2015	RW	RW
B1	E-18-007042	07JUN2018	RW	RW
C	E-18-019861	26FEB2019	RW	RW

- Verpackung siehe Vorschrift V2286542  
 PACKING SEE PACKING INSTRUCTION V2286542
- 100% optischer Test: Lichtausgangsleistung, Receiver-Empfindlichkeit und Status-Pin-Abfrage  
 100% OPTICAL TEST: OUTPUT PERFORMANCE, RECEIVER SENSITIVITY AND STATUS-PIN-QUERY
- Massgebend ist nur der deutsche Text  
 ONLY THE GERMAN LANGUAGE SHALL BE BINDING
- Alle Masse in () nur als Info  
 ALL DIMENSIONS IN () ONLY AS INFO
- Steckersystem gemäss Schnittstelle C-114-18361-1 inklusive Kodierungen  
 CONNECTOR ACCORDING TO C-114-18361-1 INCLUDING CODINGS
- Bezugszin der Stiftwanne  
 REFERENCE PIN OF HEADER
- Pinlayout Angaben entsprechen den Form- und Lagetoleranzen der Pins.  
 (Layout ist entsprechend anzulegen)  
 PIN LAYOUT DIMENSIONS RELATE TO SHAPE AND POSITION TOLERANCES OF PINS  
 LAYOUT HAS TO BE ADAPTED
- 1-2286542-1 wie gezeichnet (Kodierung A)  
 1-2286542-1 AS SHOWN (CODING A)
- Gravur der PN= (X...), Revision= (R)  
 ENGRAVING OF PN= (X...), REVISION= (R)
- Gravur der Markierung ZZZ= A01 fuer Diodentyp Avago AFBR-1150/2150 und Produktionsdatum= (DDYY)  
 ENGRAVING OF MARKING ZZZ= A01 FOR FOT TYPE AVAGO AFBR-1150/2150 AND DATECODE= (DDYY)
- Pos.7 Staubschutzkappe: Handhabungshilfe  
 nicht Teil des endgueltigen Produktes  
 POS.7 PROTECTION COVER: HANDLING AID  
 NOT PART OF FINAL PRODUCT
- Fot-Pins (14x)  
 FOT PINS (14x)
- EMV-Schirmblech Pins (13x)  
 EMI SHIELD PINS (13x)
- Passend zu Gegenstecker z. B. 1418862 und Leitungssatz  
 SUITABLE TO MATING PART E.G. 1418862 AND CONDUCTOR SET
- Gewicht ohne Staubschutzkappe  
 WEIGHT WITHOUT DUST COVER
- Pinlayout und max. Baugroesse gemäss C-114-18941-04  
 PIN LAYOUT AND MAX. OVERALL SIZE ACC. TO C-114-18941-04
- Bereich fuer Schirmblech-Kontaktierung  
 CONTACTING AREA FOR SHIELDING

Linie	TE-Werkz. Nr. TE-TOOL No.	Markierung MARKING
A	51-0240884	ohne zus. Markierung WITHOUT EXTRA MARKING
B	51-1880605	Punkt hinter Revisionsstand DOT BEHIND REVISION

PART NO.	PACKAGING	REV.	COD.	DESCRIPTION	QTY.	SURFACE / COLOR	MATERIAL	WEIGHT (g)	VOL. (mm³)	POS.
2-2286542-1	TAPE & REEL	C	A	ASSY GOF WITH SHRINK HOSE	2	TRANSPARENT	Glass/PVDF vernetzt	7.46	2894	7
				RECEIVER AVAGO AFBR-2150	1	plating: NiPdAu 0.005µm	RESIN AND COPPER ALLOY			6
				TRANSMITTER AVAGO AFBR-1150	1	plating: NiPdAu 0.005µm	RESIN AND COPPER ALLOY			5
				ADAPTER	1	BLACK	PA6/6T GF25			4
				EMI SHIELDING	1	TIN Hot Dipped 1.0-3.0µm	CuSn4			3
1-2286542-1	TRAY	C	A	ASSY GOF WITH SHRINK HOSE	2	TRANSPARENT	Glass/PVDF vernetzt	7.46	2894	1
				RECEIVER AVAGO AFBR-2150	1	plating: NiPdAu 0.005µm	RESIN AND COPPER ALLOY			7
				TRANSMITTER AVAGO AFBR-1150	1	plating: NiPdAu 0.005µm	RESIN AND COPPER ALLOY			6
				ADAPTER	1	BLACK	PA6/6T GF25			5
				EMI SHIELDING	1	TIN Hot Dipped 1.0-3.0µm	CuSn4			4
2 POS. HEADER CODING A	1	BLACK	PA6/6T GF25	3						
2 POS. HEADER CODING A	1	BLACK	PA6/6T GF25	2						
2 POS. HEADER CODING A	1	BLACK	PA6/6T GF25	1						



PRODUCT CHARACTERISTICS ACC. QMP EMEA\_12  
 BESONDERE MERKMALE NACH QMP EMEA\_12

THIS DRAWING IS A CONTROLLED DOCUMENT.

DMN: R. Wuecker 28MA12014  
 CR: M. Reinhardt 30MA12014

DIMENSIONS: MASSENHEITEN: mm

TOLERANCES UNLESS OTHERWISE SPECIFIED: ANGEWENDETE TOLERANZEN

0 PLC ±  
 1 PLC ±  
 2 PLC ±  
 3 PLC ±  
 4 PLC ±

MATERIAL: SEE TABLE

FINISHSCHICKE/FARBE: -

WEIGHT: -  
 GEWICHT: -

CUSTOMER DRAWING

TOLERANCING ISO 8015  
 TOLERIERUNG ISO 8015

NAME: MOST 150 GOF MICRO PIGTAIL FULLY SHIELDED AVAGO AFBR-1150/2150

SIZE: A1  
 CAGE CODE: 00779  
 DRAWING NO: 2286542-1  
 VERFAHRENSNUMMER: 114-18946

RESTRICTED TO NON-PUR

SCALE: MASSSTAB 5:1  
 SHEET: BLATT 1 OF 1  
 REV: C