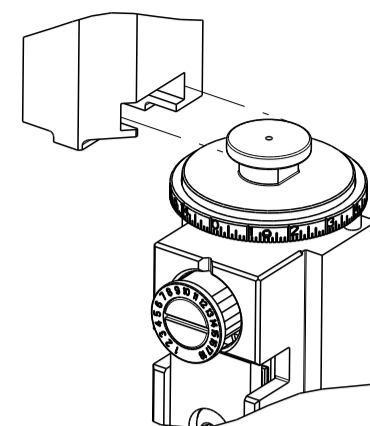


| PART NUMBER | REVISION | DESCRIPTION | FEED TYPE |
|-------------|----------|---------------------------------|-----------|
| 2266558-2 | E | FINE CRIMP HEIGHT ADJUST | PNEUMATIC |
| 7-2266558-2 | F | PNEUMATIC AND CRIMP TOOLING KIT | PNEUMATIC |
| 7-2266558-7 | B | CRIMP TOOLING KIT | - |

ATLANTIC VERSION TERMINATOR INTERFACE ADAPTER

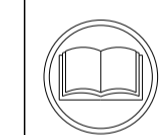


| APPLICATOR DATA | | |
|-----------------|----------------|------|
| CRIMP | SIZE | TYPE |
| WIRE | 3.85 mm [.152] | F |
| INSUL | 5.50 mm [.217] | OV |

APPLICATOR INSTRUCTIONS 408-35042

| TERMINAL DATA: FCI TERMINAL | | FCI CRIMP SPECIFICATION | |
|---|-------------------|------------------------------|--------------|
| TERMINAL NAME: 9.5-DCSI FEMALE TERMINAL | | | |
| WIRE STRIP LENGTH | | INSULATION DIAMETER RANGE | |
| 7.50-8.50 mm [.295-.335 IN] | | Ø2.70-4.40 mm [.106-.173 IN] | |
| TERMINAL APPLICATION SPECIFICATION | 9 084 05 00 Rev F | | |
| TERMINALS APPLIED | | | |
| TE TERMINAL | FCI TERMINAL | TE TERMINAL | FCI TERMINAL |
| 2113608-1 | 60070161 | 2113608-3 | 60070261 |
| 2113608-2 | 60070162 | 2113608-4 | 60070262 |

| WIRE SIZE | CRIMP HEIGHT mm [INCH] | CRIMP HEIGHT REFERENCE SETTING |
|---------------------|-------------------------------|--------------------------------|
| 6.00mm2 | 2.80 +/- 0.05 [.110 +/- .002] | 5.7 |
| 5.00mm2 or 2x2.5mm2 | 2.60 +/- 0.05 [.102 +/- .002] | 7.7 |



- RECOMMENDED SPARE PARTS
- REFER TO SUPPLIED INSTRUCTION SHEET FOR CLEANING, LUBRICATION AND STORAGE OF APPLICATOR.
- APPLY PART NUMBER 2-23419-6 LOCTITE TO THREADS OF ITEM 242.
- CRIMP HEIGHT REFERENCE SETTING WAS THE SETTING USED WHEN THE APPLICATOR WAS QUALIFIED AT THE FACTORY. ADJUSTMENT MAY BE NECESSARY WHEN RUNNING APPLICATOR IN THE FIELD.
- UNLESS SPECIFIED OTHERWISE TORQUE VALUES SHALL BE USED PER DOCUMENT, 101-35000.
- TERMINAL PITCH NOT COMPATIBLE WITH MECHANICAL FEED.

***WARNING**
ON INSTALLATION, SET WIRE DISC TO CRIMP HEIGHT REFERENCE SETTING FOR LARGEST WIRE SIZE. CRIMP HEIGHT REFERENCE SETTINGS GREATER THAN THE VALUE SHOWN MAY CAUSE DAMAGE TO THE CRIMP TOOLING, REFER TO THE INSTRUCTION SHEET FOR PROPER SETUP AND ADJUSTMENTS.

| LOC | DIST | REVISIONS | | | | | |
|-----|------|-----------|-----|---------------|-----------|-----|------|
| A | 66 | P | LTN | DESCRIPTION | DATE | OWN | APVD |
| | | D | | ECR-18-000783 | 17JAN2018 | JAH | GB |
| | | E | | ECR-18-015481 | 29SEP2018 | FL | TE |
| | | E2 | | ECR-18-016236 | 12OCT2018 | FL | TE |
| | | F | | ECR-22-144379 | 12JUL2022 | JWC | ROY |

| | | | | | |
|---|-----|-----|-------------|-------------------------------------|-----|
| - | 1 | 1 | 1803078-2 | SPACER, PRECISION | 259 |
| - | 1 | 1 | 2119641-1 | FEED CAM, AIR FEED | 248 |
| - | 1 | 1 | 2119082-8 | CAM, SNAIL, INSULATION ADJUSTMENT | 244 |
| - | 1 | 1 | 2079764-1 | WASHER, WAVE SPRING, CREST-TO-CREST | 243 |
| - | 1 | 1 | 2119083-1 | RETAINER, INSULATION DIAL | 242 |
| - | 1 | 1 | 7-18023-7 | SCR, SKT HD CAP M3 X 4.0 | 241 |
| - | 1 | 1 | 2844940-2 | AIR FEED MODULE | 238 |
| - | REF | REF | 994970-2 | COUNTER, MAGNETIC | 164 |
| - | 1 | 1 | 2844908-1 | SCREW, LOCKING | 99 |
| - | 1 | 1 | 2844907-1 | POST, LOCKING | 98 |
| - | 1 | 1 | 455888-9 | SPACER, CRIMPER | 82 |
| - | 2 | 2 | 2079383-4 | SCR, BHSC, RoHS (M4 X 8) | 79 |
| - | 1 | 1 | 1803096-1 | EXTENSION PLATE | 78 |
| - | 1 | 1 | 1803607-3 | DOCUMENTATION PACKAGE | 71 |
| - | 1 | 1 | 2119791-9 | DEPRESSOR, WIRE | 70 |
| - | 1 | 1 | 2119740-1 | TAG, IDENTIFICATION | 67 |
| - | 2 | 2 | 2168078-1 | SCREW, DRIVE, RH, RoHS, 2 x .188 | 66 |
| - | 1 | 1 | 2168083-2 | SCR, SKT HD CAP, RoHS, M4 X 8.0 | 60 |
| - | 1 | 1 | 5-18022-5 | SCR, HEX HD CAP, M4 X 6.0 | 59 |
| - | 1 | 1 | 1338683-8 | FEED PAWL | 56 |
| - | 4 | 4 | 2168083-3 | SCR, SKT HD CAP, RoHS, M4 X 12.0 | 54 |
| - | 2 | 2 | 1-2168083-0 | SCR, SKT HD CAP, RoHS, M4 X 10 | 53 |
| - | 1 | 1 | 5018030-1 | NUT, HEX, REG, RoHS, M3 | 52 |
| - | 1 | 1 | 811242-5 | BUMPER, HOLD DOWN | 51 |
| - | 1 | 1 | 690753-2 | SPACER, TONKER | 50 |
| - | 1 | 1 | 18023-9 | SCR, SKT HD CAP M4 X 6.0 | 49 |
| - | 1 | 1 | 1803583-9 | APPLICATOR BASIC ASSEMBLY, SF | 46 |
| - | 1 | 1 | 1803515-2 | RAM ASSEMBLY, SF ATLANTIC | 44 |
| - | 1 | 1 | 1803602-2 | SCR, BHSC, RoHS (M8 X 40) | 41 |
| - | 1 | 1 | 3-1752356-3 | SUPPORT, TERMINAL | 34 |
| - | 2 | 2 | 2079383-5 | SCR, BHSC, RoHS (M4 X 20) | 33 |
| - | 2 | 2 | 2-2844962-1 | SPACER, CYLINDRICAL, STRIP GUIDE | 30 |
| - | 1 | 1 | 2844992-1 | ASSEMBLY, STRIP GUIDE | 29 |
| - | 1 | 1 | 455888-5 | SPACER, CRIMPER | 28 |
| - | 1 | 1 | 1320928-4 | STRIP GUIDE | 24 |
| - | 1 | 1 | 2168083-2 | SCR, SKT HD CAP, RoHS, M4 X 8.0 | 21 |
| - | 2 | 2 | 1-18028-2 | WASHER, FLAT, REG M4 | 20 |
| - | 1 | 1 | 2119533-1 | STRIPPER, SIDE FEED | 19 |
| - | 1 | 1 | 2119806-1 | INSERT, SHEAR | 13 |
| - | 1 | 1 | 3-22280-3 | SPRING, COMPRESSION | 12 |
| - | 1 | 1 | 1-356885-3 | STOP, SHEAR | 11 |
| - | 1 | 1 | 2119805-1 | SHEAR HOLDER, FRONT | 10 |
| - | 1 | 1 | 1803095-1 | FLOATING SHEAR, FRONT | 9 |
| - | 1 | 2 | 1-1803171-0 | ANVIL, COMBINATION | 8 |
| - | - | - | - | - | 7 |
| - | - | - | - | - | 6 |
| - | 1 | 1 | 1-2119757-4 | DEPRESSOR, SHEAR | 5 |
| - | 1 | 1 | 238011-3 | BLOCK, CRIMPER SPACER | 4 |
| - | 1 | 2 | 1-1633964-5 | CRIMPER, INSULATION OVERLAP PREMIUM | 3 |
| - | 1 | 1 | 455888-3 | SPACER, CRIMPER | 2 |
| - | 1 | 2 | 1-1633738-3 | CRIMPER, WIRE | 1 |

ATLANTIC VERSION
Shown on sheets 1 of 4 & 2 of 4
(Pacific version shown on sheets 3 of 4 & 4 of 4)

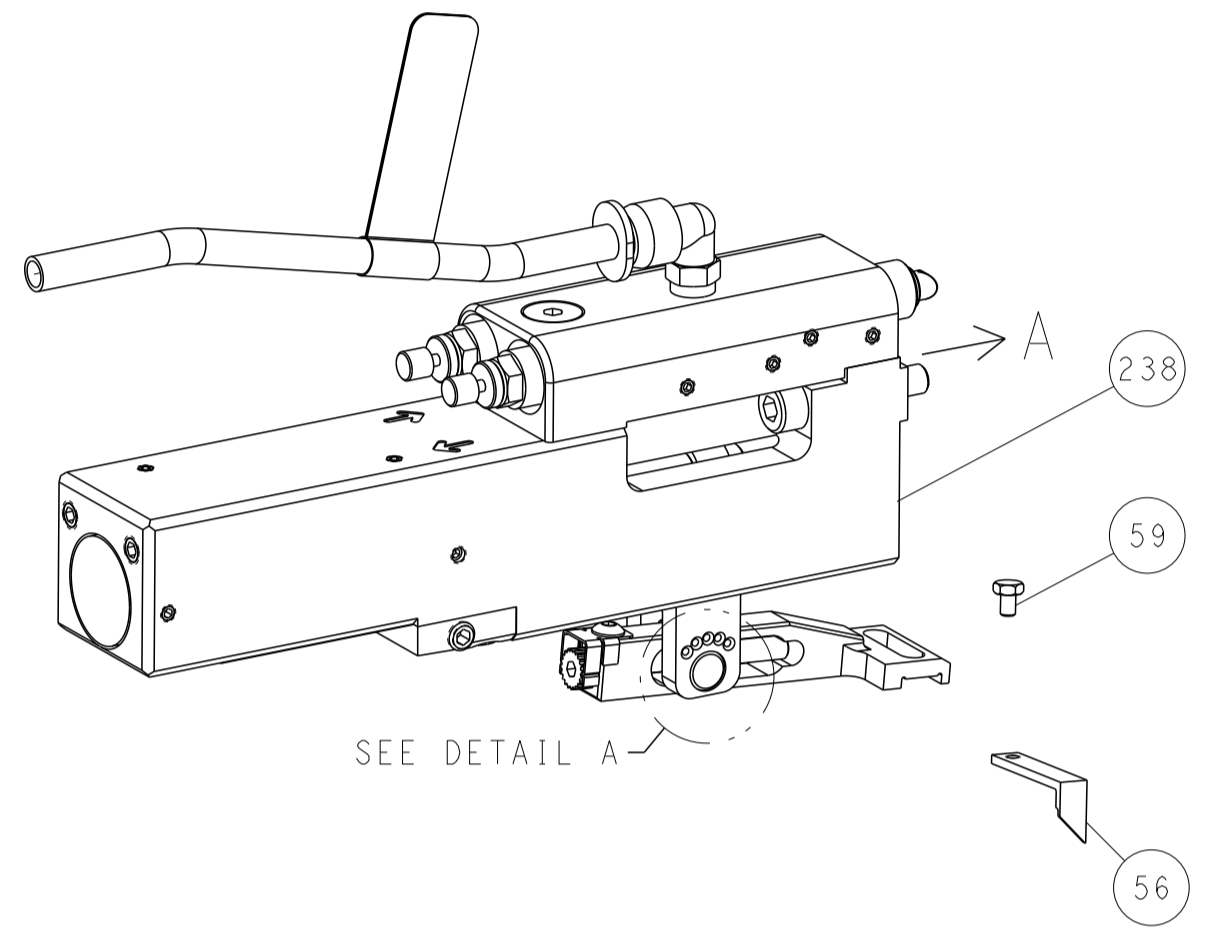
| DIMENSIONS: | | TOLERANCES UNLESS OTHERWISE SPECIFIED: | | MATERIAL: | | FINISH: | |
|-------------|---------|--|---------|-----------|---------|----------|----------|
| mm | 0 PLC ± | 1 PLC ± | 2 PLC ± | 3 PLC ± | 4 PLC ± | ANGLES ± | FINISH ± |

| | | | |
|--|----------------------------|------------|---------------------------|
| OWN | HOFFNER | 19NOV2014 | TE Connectivity |
| CHK | T. ELBIN | 20NOV2014 | Harrisburg, PA 17105-3608 |
| APVD | T. ELBIN | 20NOV2014 | |
| NAME | Ocean Side Feed Applicator | | |
| SIZE | CAGE CODE | DRAWING NO | RESTRICTED TO |
| A1 | 00779 | 2266558 | |
| Customer Accessible Production Drawing | | SCALE | 1:2 |
| SHEET | | 1 | OF 4 |
| REV | | F | |

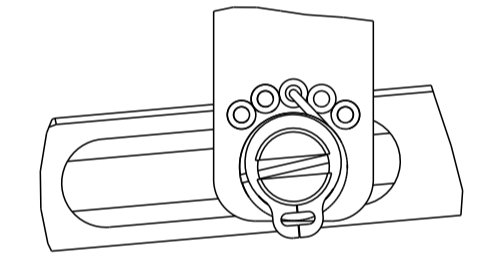
| LOC | DIST | REVISIONS | | | | | |
|-----|------|-----------|-----|-------------|------|-----|------|
| A | 66 | P | LTN | DESCRIPTION | DATE | OWN | APVD |
| | | - | | SEE SHEET 1 | | | |

FEED TYPE

PNEUMATIC

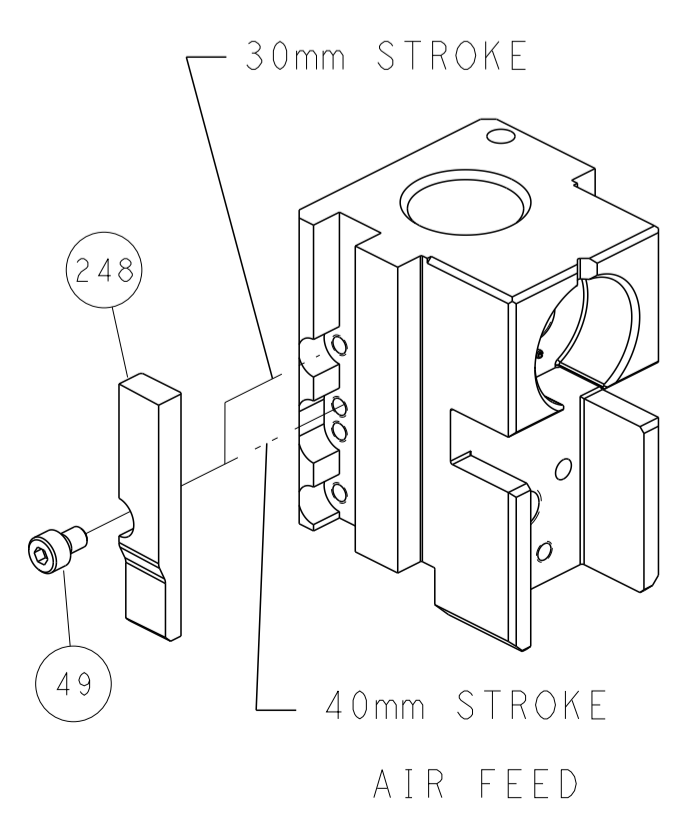


FEED SPRING SETTING POSITION (SHOWN FROM REAR SIDE)

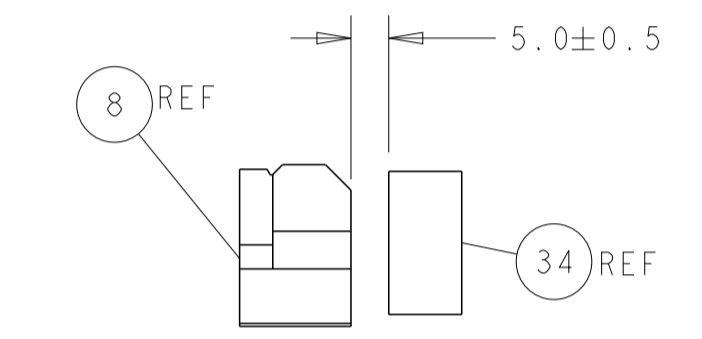
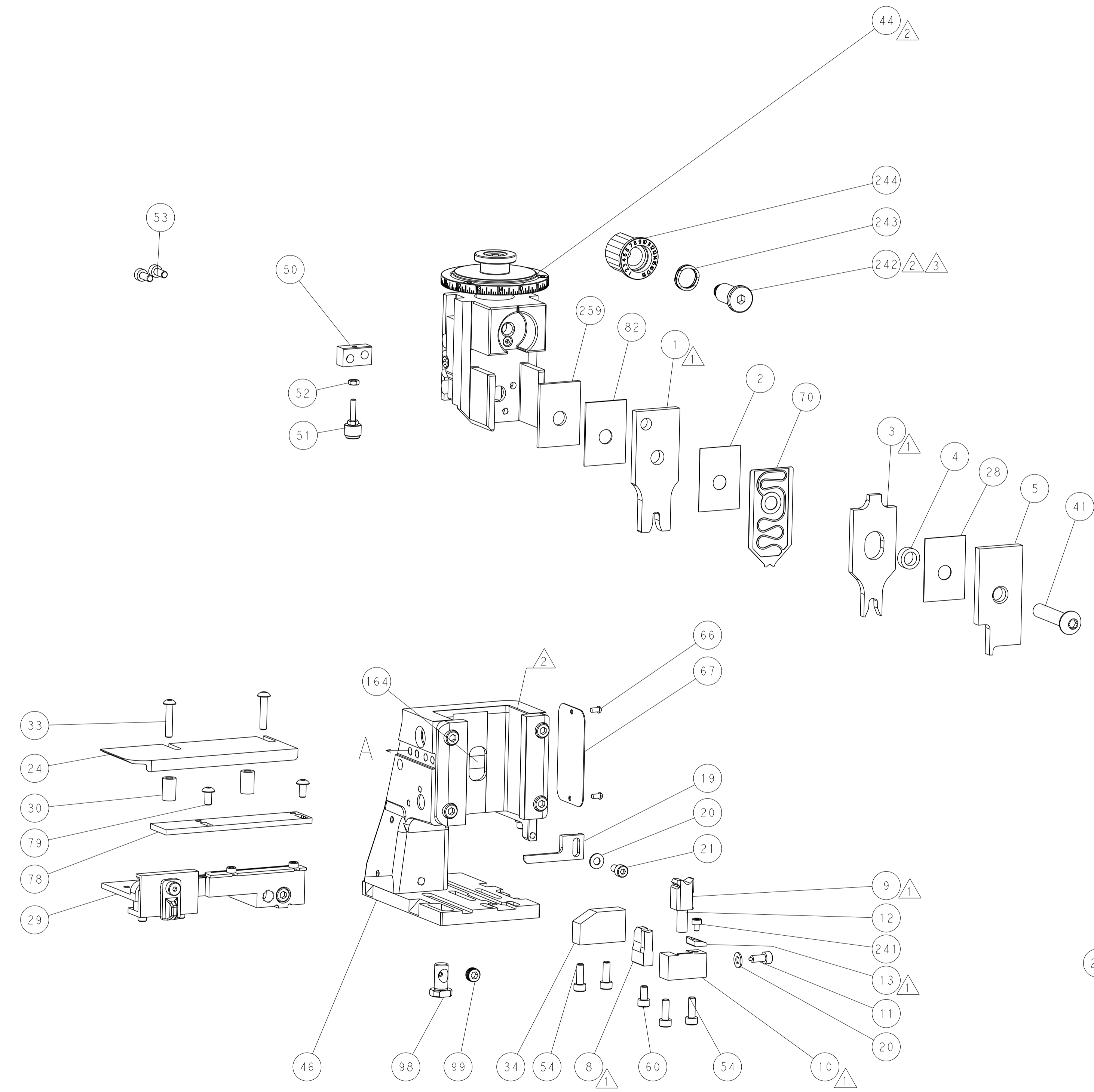


DETAIL A

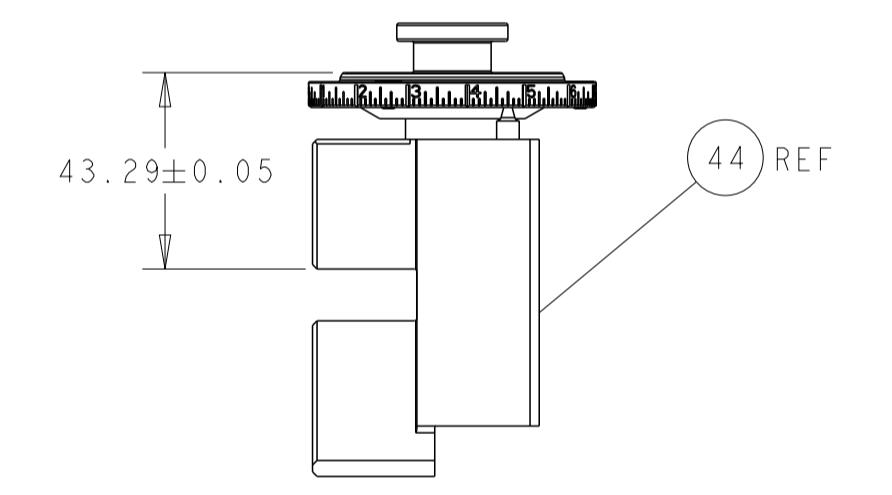
CAM POSITION



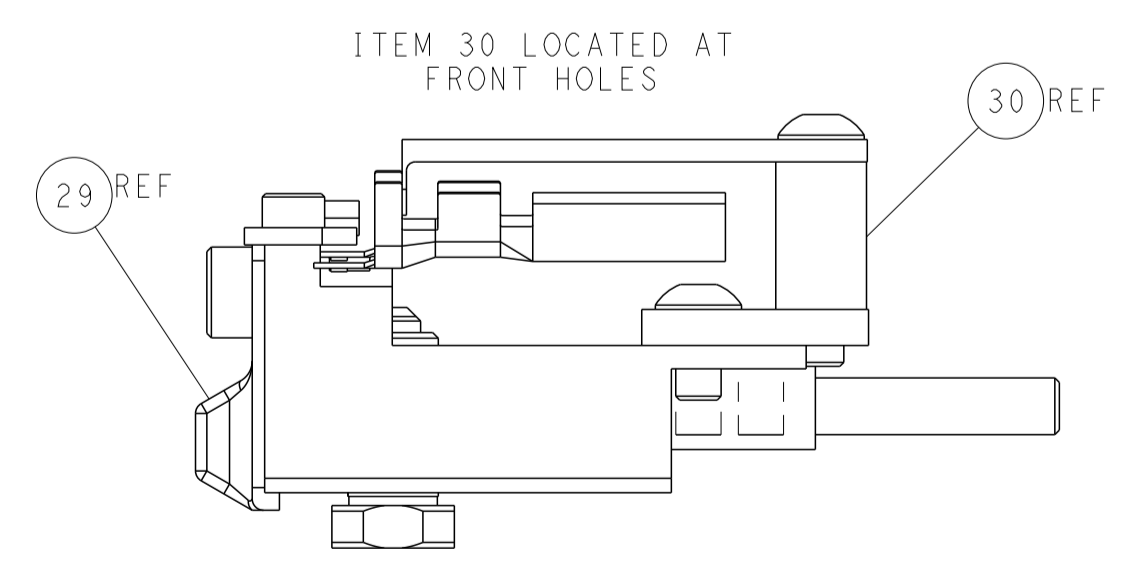
AIR FEED



TERMINAL SUPPORT LOCATION



RAM SET-UP



FEED TRACK POSITION GUIDE BY INSULATION BARREL

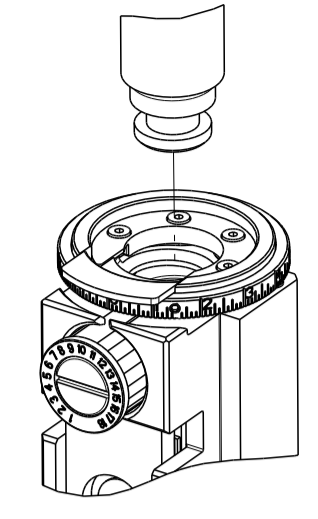
ATLANTIC VERSION
 Shown on sheets 1 of 4 & 2 of 4
 (Pacific version shown on sheets 3 of 4 & 4 of 4)

| | | | |
|---|--|---|---|
| <small>THIS DRAWING IS UNPUBLISHED. RELEASED FOR PUBLICATION BY TYCO ELECTRONICS CORPORATION. ALL RIGHTS RESERVED.</small> | | DWN: HOFFNER 19NOV2014 CHK: TELBIN 20NOV2014 APVD: TELBIN 20NOV2014 | TE Connectivity Harrisburg, PA 17105-3608 |
| DIMENSIONS: mm TOLERANCES UNLESS OTHERWISE SPECIFIED: 0 PLC ± 1 PLC ± 2 PLC ± 3 PLC ± 4 PLC ± ANGLES ± FINISH ± | | NAME: Ocean Side Feed Applicator PRODUCT SPEC: APPLICATION SPEC: SIZE: A1 CAGE CODE: 00779 DRAWING NO: C=2266558 | RESTRICTED TO: F SCALE: 1:2 SHEET: 2 OF 4 REV: |
| MATERIAL: | | WEIGHT: | Customer Accessible Production Drawing |

THIS DRAWING IS UNPUBLISHED. RELEASED FOR PUBLICATION
 COPYRIGHT 20 BY TYCO ELECTRONICS CORPORATION. ALL RIGHTS RESERVED.

| PART NUMBER | REVISION | DESCRIPTION | FEED TYPE |
|-------------|----------|--------------------------|-----------|
| 2-2266558-2 | E | FINE CRIMP HEIGHT ADJUST | PNEUMATIC |
| 7-2266558-7 | B | CRIMP TOOLING KIT | - |

PACIFIC VERSION TERMINATOR
 INTERFACE ADAPTER



| APPLICATOR DATA | | |
|--------------------------------------|----------------|------|
| CRIMP | SIZE | TYPE |
| WIRE | 3.85 mm [1.52] | F |
| INSUL | 5.50 mm [2.17] | OV |
| APPLICATOR INSTRUCTIONS 408-35042 | | |

| TERMINAL DATA: FCI TERMINAL | | FCI CRIMP SPECIFICATION | |
|---|-------------------|---|--------------|
| TERMINAL NAME: 9.5-DCSI FEMALE TERMINAL | | | |
| WIRE STRIP LENGTH 7.50-8.50 mm [1.295-.335 IN] | | INSULATION DIAMETER RANGE Ø2.70-4.40 mm [1.06-.173 IN] | |
| TERMINAL APPLICATION SPECIFICATION Pg. 2 of 3 | 9 084 05 00 Rev F | - | - |
| TERMINALS APPLIED | | | |
| TE TERMINAL | FCI TERMINAL | TE TERMINAL | FCI TERMINAL |
| 2113608-1 | 60070161 | 2113608-3 | 60070261 |
| 2113608-2 | 60070162 | 2113608-4 | 60070262 |

| WIRE SIZE | CRIMP HEIGHT mm [INCH] | CRIMP HEIGHT REFERENCE SETTING |
|---------------------|-------------------------------|--------------------------------|
| 6.00mm2 | 2.80 +/- 0.05 [1.10 +/- .002] | 5.7 |
| 5.00mm2 or 2x2.5mm2 | 2.60 +/- 0.05 [1.02 +/- .002] | 7.7 |



- RECOMMENDED SPARE PARTS
- REFER TO SUPPLIED INSTRUCTION SHEET FOR CLEANING, LUBRICATION AND STORAGE OF APPLICATOR.
- APPLY PART NUMBER 2-23419-6 LOCTITE TO THREADS OF ITEM 242.
- CRIMP HEIGHT REFERENCE SETTING WAS THE SETTING USED WHEN THE APPLICATOR WAS QUALIFIED AT THE FACTORY. ADJUSTMENT MAY BE NECESSARY WHEN RUNNING APPLICATOR IN THE FIELD.
- 5. UNLESS SPECIFIED OTHERWISE TORQUE VALUES SHALL BE USED PER DOCUMENT, 101-35000.
- TERMINAL PITCH NOT COMPATIBLE WITH MECHANICAL FEED.

***WARNING**
 ON INSTALLATION, SET WIRE DISC TO CRIMP HEIGHT REFERENCE SETTING FOR LARGEST WIRE SIZE. CRIMP HEIGHT REFERENCE SETTINGS GREATER THAN THE VALUE SHOWN MAY CAUSE DAMAGE TO THE CRIMP TOOLING, REFER TO THE INSTRUCTION SHEET FOR PROPER SETUP AND ADJUSTMENTS.

| LOC | DIST | REVISIONS | | | | | |
|-----|------|-----------|-----|-------------|------|-----|------|
| A | 66 | P | LTN | DESCRIPTION | DATE | OWN | APVD |
| - | - | - | - | SEE SHEET 1 | - | - | - |

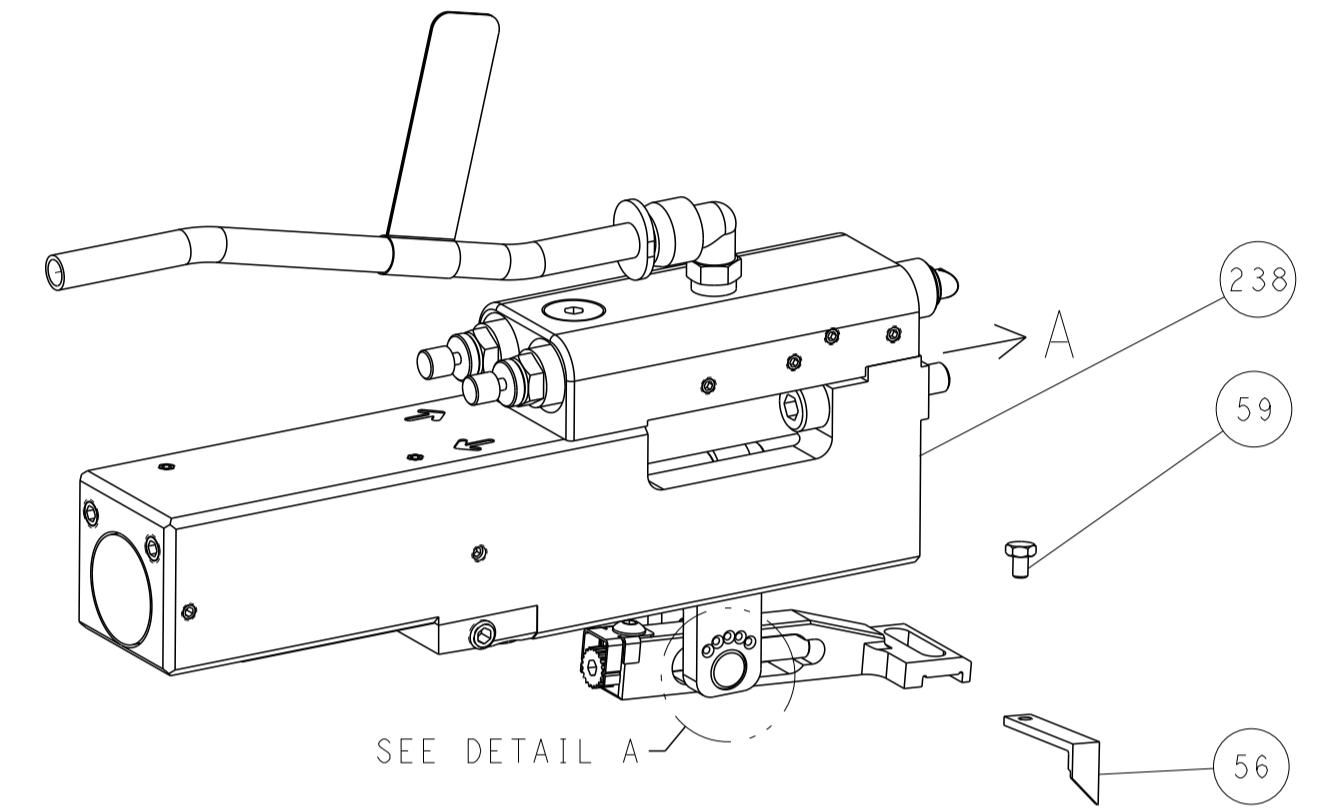
| | | | | |
|---|-----|-------------|-------------------------------------|---------|
| - | 1 | 1803078-2 | SPACER, PRECISION | 259 |
| - | 1 | 2119082-8 | CAM, SNAIL, INSULATION ADJUSTMENT | 244 |
| - | 1 | 2079764-1 | WASHER, WAVE SPRING, CREST-TO-CREST | 243 |
| - | 1 | 2119083-1 | RETAINER, INSULATION DIAL | 242 |
| - | 1 | 7-18023-7 | SCR, SKT HD CAP M3 X 4.0 | 241 |
| - | 1 | 2844940-2 | AIR FEED MODULE | 238 |
| - | REF | 994970-2 | COUNTER, MAGNETIC | 164 |
| - | 1 | 2119641-2 | FEED CAM, AIR FEED | 151 |
| - | 1 | 2168083-8 | SCR, SKT HD CAP, RoHS, M4 X 16 | 144 |
| - | 4 | 2168083-9 | SCR, SKT HD CAP, RoHS, M4 X 20 | 143 |
| - | 1 | 1-1803583-0 | APPLICATOR BASIC ASSEMBLY, SF | 141 |
| - | 1 | 1803516-2 | RAM ASSEMBLY, SF PACIFIC | 140 |
| - | 1 | 2844908-1 | SCREW, LOCKING | 99 |
| - | 1 | 2844907-1 | POST, LOCKING | 98 |
| - | 1 | 455888-9 | SPACER, CRIMPER | 82 |
| - | 2 | 2079383-4 | SCR, BHSC, RoHS (M4 X 8) | 79 |
| - | 1 | 1803096-1 | EXTENSION PLATE | 78 |
| - | 1 | 1803607-3 | DOCUMENTATION PACKAGE | 71 |
| - | 1 | 2119791-9 | DEPRESSOR, WIRE | 70 |
| - | 1 | 2119740-1 | TAG, IDENTIFICATION | 67 |
| - | 2 | 2168078-1 | SCREW, DRIVE, RH, RoHS, 2 x .188 | 66 |
| - | 1 | 5-18022-5 | SCR, HEX HD CAP, M4 X 6.0 | 59 |
| - | 1 | 1338683-8 | FEED PAWL | 56 |
| - | 2 | 1-2168083-0 | SCR, SKT HD CAP, RoHS, M4 X 10 | 53 |
| - | 1 | 5018030-1 | NUT, HEX, REG, RoHS, M3 | 52 |
| - | 1 | 811242-5 | BUMPER, HOLD DOWN | 51 |
| - | 1 | 690753-2 | SPACER, TONKER | 50 |
| - | 1 | 18023-9 | SCR, SKT HD CAP M4 X 6.0 | 49 |
| - | 1 | 1803602-2 | SCR, BHSC, RoHS (M8 X 40) | 41 |
| - | 1 | 3-1752356-3 | SUPPORT, TERMINAL | 34 |
| - | 2 | 2079383-5 | SCR, BHSC, RoHS (M4 X 20) | 33 |
| - | 2 | 2-2844962-1 | SPACER, CYLINDRICAL, STRIP GUIDE | 30 |
| - | 1 | 2844992-1 | ASSEMBLY, STRIP GUIDE | 29 |
| - | 1 | 455888-5 | SPACER, CRIMPER | 28 |
| - | 1 | 1320928-4 | STRIP GUIDE | 24 |
| - | 1 | 2168083-2 | SCR, SKT HD CAP, RoHS, M4 X 8.0 | 21 |
| - | 2 | 1-18028-2 | WASHER, FLAT, REG M4 | 20 |
| - | 1 | 2119533-1 | STRIPPER, SIDE FEED | 19 |
| - | 1 | 2119806-1 | INSERT, SHEAR | 13 |
| - | 1 | 3-22280-3 | SPRING, COMPRESSION | 12 |
| - | 1 | 1-356885-3 | STOP, SHEAR | 11 |
| - | 1 | 2119805-1 | SHEAR HOLDER, FRONT | 10 |
| - | 1 | 1803095-1 | FLOATING SHEAR, FRONT | 9 |
| - | 1 | 2-1803171-0 | ANVIL, COMBINATION | 8 |
| - | - | - | - | 7 |
| - | - | - | - | 6 |
| - | 1 | 1-2119757-4 | DEPRESSOR, SHEAR | 5 |
| - | 1 | 238011-3 | BLOCK, CRIMPER SPACER | 4 |
| - | 1 | 2-1633964-5 | CRIMPER, INSULATION OVERLAP PREMIUM | 3 |
| - | 1 | 455888-3 | SPACER, CRIMPER | 2 |
| - | 1 | 8-1633738-3 | CRIMPER, WIRE | 1 |
| - | 77 | -22 | PART NO | ITEM NO |
| - | - | - | DESCRIPTION | - |

PACIFIC VERSION
 Shown on sheets 3 of 4 & 4 of 4
 (Atlantic version shown on sheets 1 of 4 & 2 of 4)

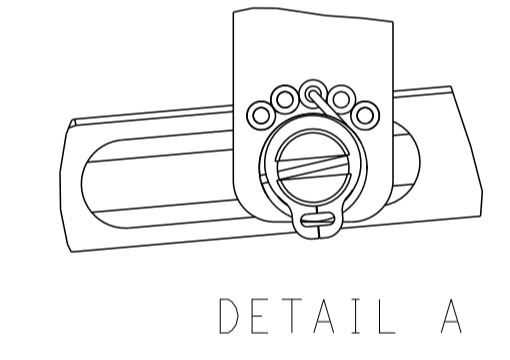
| | | | | | | | | | |
|----------------|---|--|---|--------------------------|------------------|--|-----------------------|----------------------------------|------------------|
| DIMENSIONS: mm | | TOLERANCES UNLESS OTHERWISE SPECIFIED: | | DWG: HOFFNER 19NOV2014 | | REV: T. ELBIN 20NOV2014 | | NAME: Ocean Side Feed Applicator | |
| 0 PLC | ± | 1 PLC | ± | APVD: T. ELBIN 20NOV2014 | CAGE CODE: 00779 | | DRAWING NO: C=2266558 | | RESTRICTED TO: - |
| 2 PLC | ± | 3 PLC | ± | APPLICATION SPEC: - | | SCALE: 1:2 | | SHEET 3 OF 4 | |
| 4 PLC | ± | ANGLES | ± | WEIGHT: - | | Customer Accessible Production Drawing | | REV: F | |
| FINISH | - | | | | | | | | |

| LOC | DIST | REVISIONS | | | | | |
|-----|------|-----------|-----|-------------|------|-----|------|
| | | P | LTN | DESCRIPTION | DATE | OWN | APVD |
| A | 66 | - | - | SEE SHEET 1 | - | - | - |
| | | | | | | | |
| | | | | | | | |

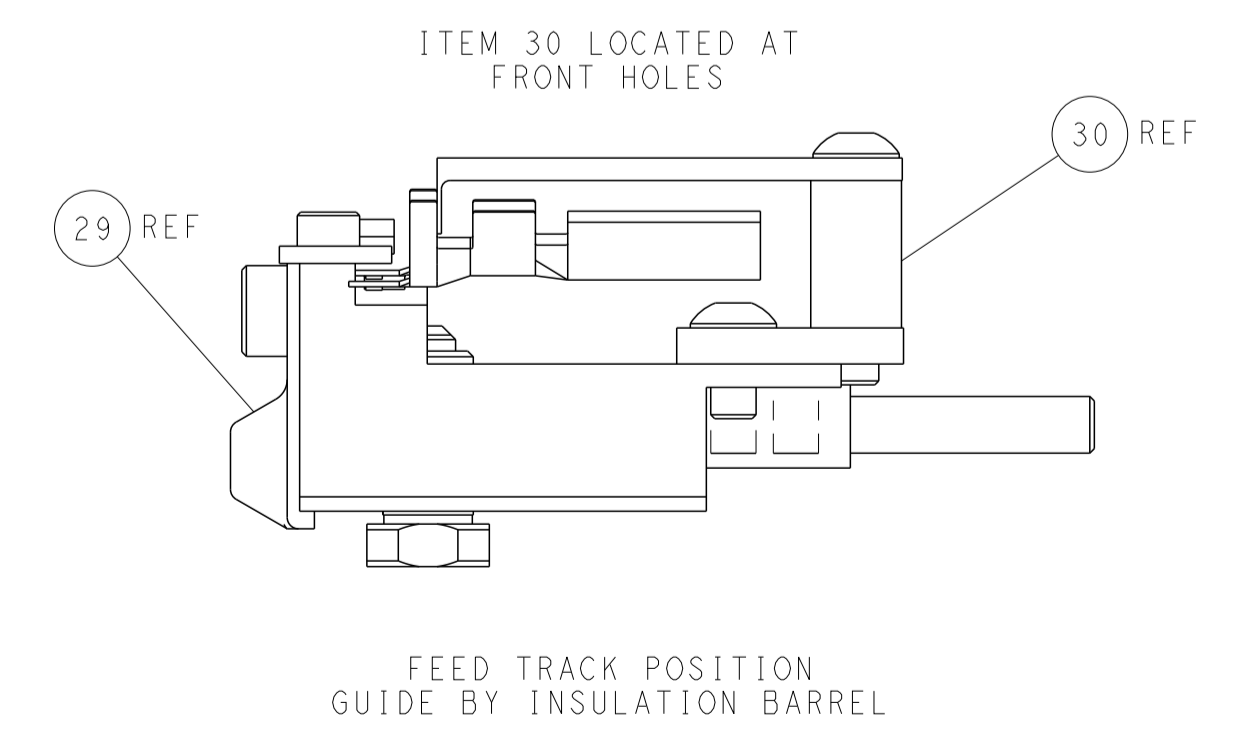
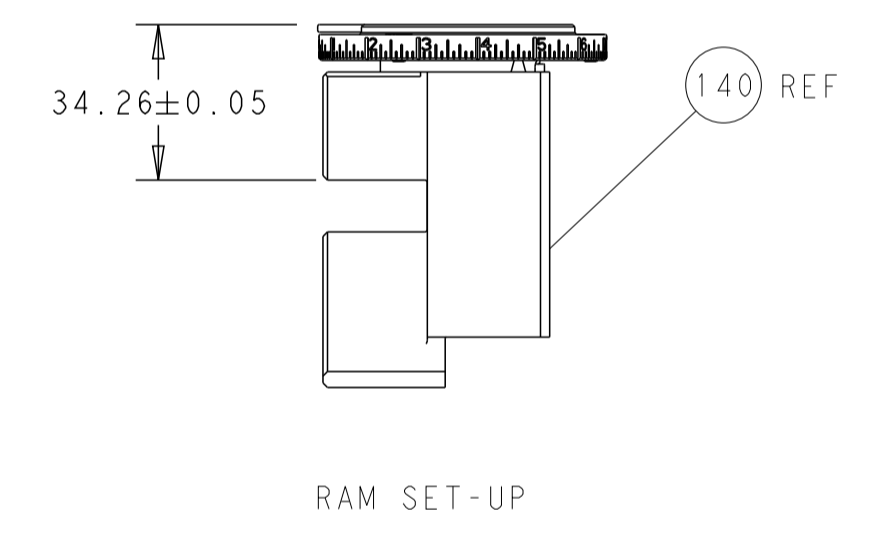
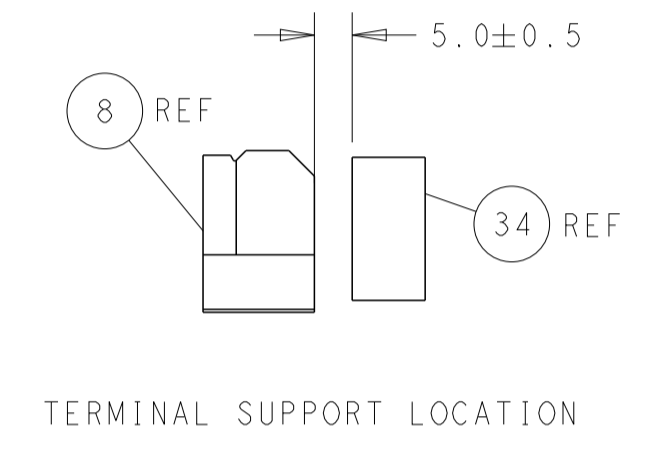
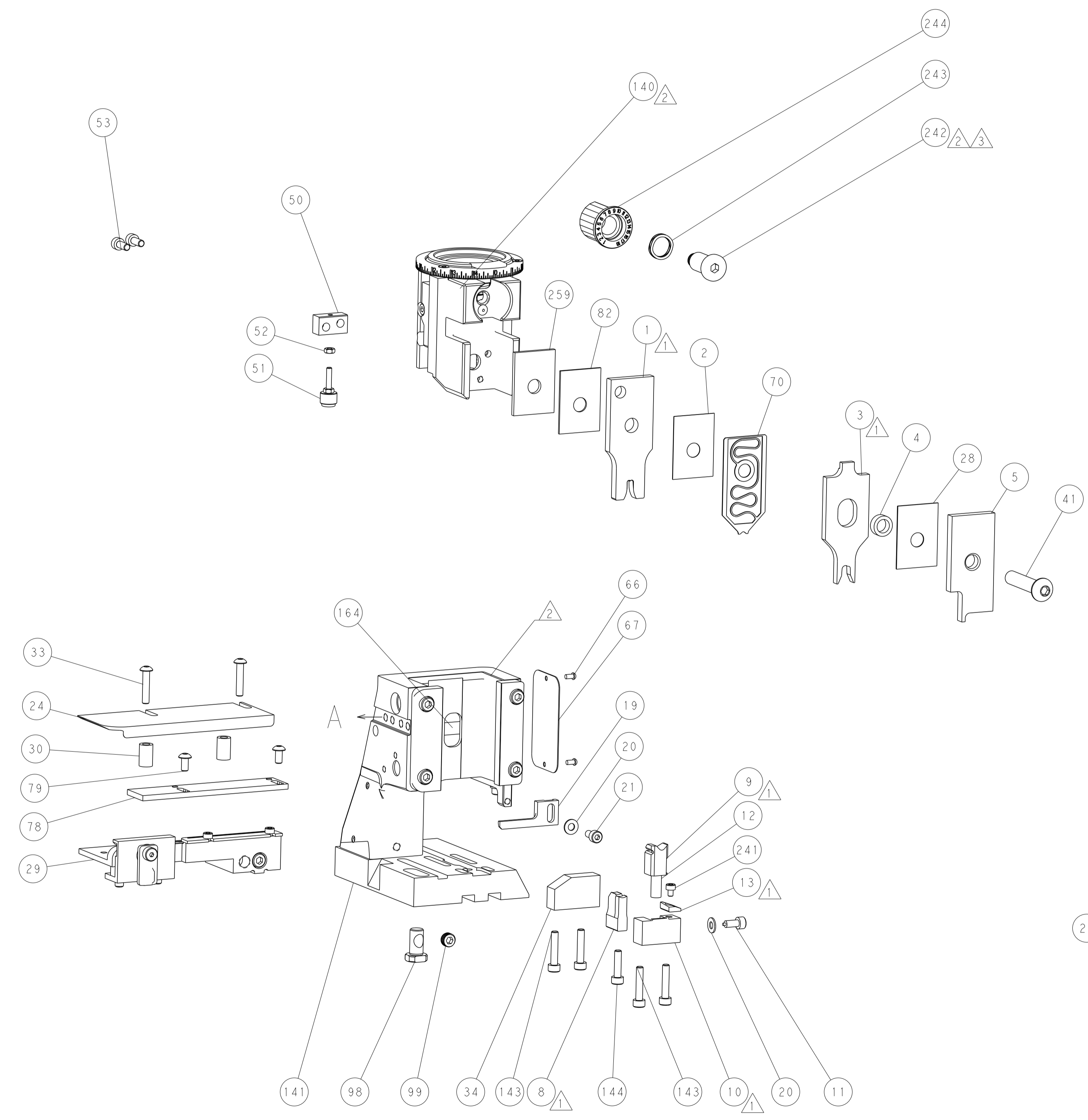
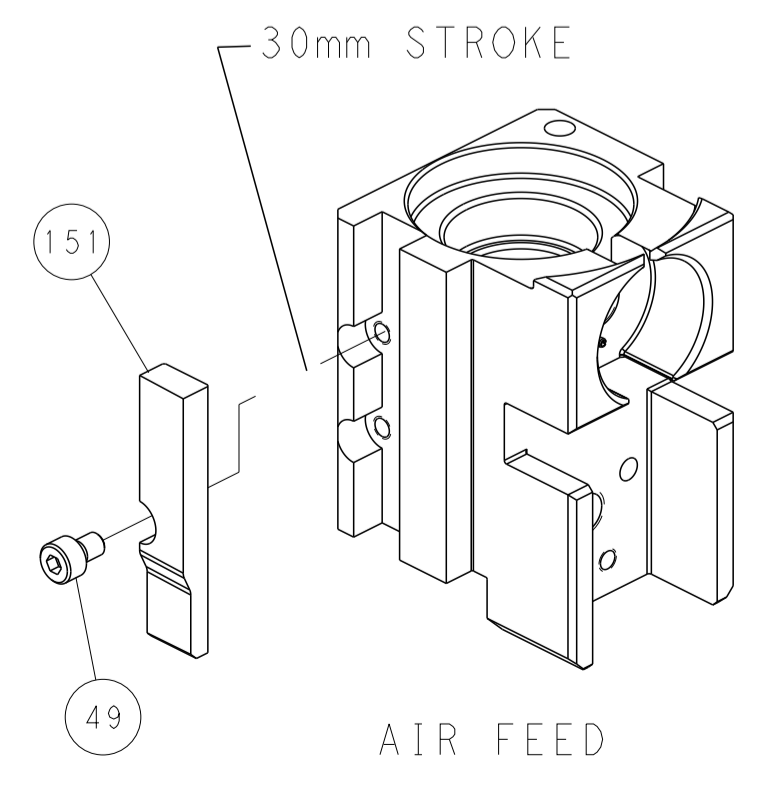
FEED TYPE PNEUMATIC



FEED SPRING SETTING POSITION (SHOWN FROM REAR SIDE)



CAM POSITION



PACIFIC VERSION
 Shown on sheets 3 of 4 & 4 of 4
 (Atlantic version shown on sheets 1 of 4 & 2 of 4)

| | | | |
|---|--|---|--|
| <small>THIS DRAWING IS UNPUBLISHED. RELEASED FOR PUBLICATION 20. COPYRIGHT 20 BY TYCO ELECTRONICS CORPORATION. ALL RIGHTS RESERVED.</small> | | DWN: HOFFNER 19NOV2014 CHK: TELBIN 20NOV2014 APVD: TELBIN 20NOV2014 | TE Connectivity Harrisburg, PA 17105-3608 |
| DIMENSIONS: mm TOLERANCES UNLESS OTHERWISE SPECIFIED: 0 PLC ± 1 PLC ± 2 PLC ± 3 PLC ± 4 PLC ± ANGLES ± MATERIAL: - FINISH: - | | NAME: Ocean Side Feed Applicator APPLICATION SPEC: - SIZE: A1 CAGE CODE: 00779 DRAWING NO: C=2266558 WEIGHT: - SCALE: 1:2 | RESTRICTED TO: - SHEET 4 OF 4 REV F |