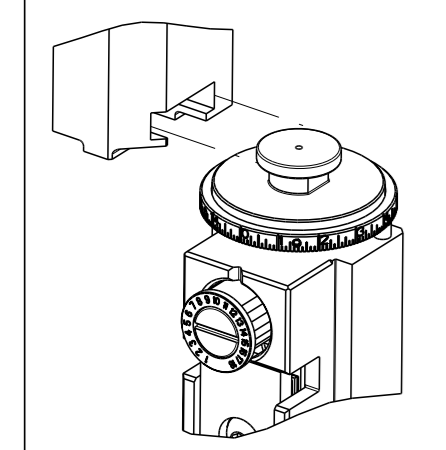


Table with columns: PART NUMBER, REVISION, DESCRIPTION, FEED TYPE. Rows include: 2266368-1 FINE CRIMP HEIGHT ADJUST MECHANICAL, 2266368-2 FINE CRIMP HEIGHT ADJUST PNEUMATIC, 2266368-5 FINE CRIMP HEIGHT ADJUST SERVO LATCH PLATE, 2266368-6 NON CRIMP HEIGHT ADJUST SERVO LATCH PLATE, 2266368-7 FINE CRIMP HEIGHT ADJUST NONE, 7-2266368-7 CRIMP TOOLING KIT.



APPLICATOR DATA table with columns: CRIMP, SIZE, TYPE. Rows: WIRE 1.40 mm [.055] F, INSUL 1.83 mm [.072] SPECIAL.

TERMINAL DATA: TE TERMINAL TE CRIMP SPECIFICATION table. Includes wire strip length, insulation diameter range, terminal application specification, and terminals applied table.

Table with columns: WIRE SIZE, CRIMP HEIGHT mm [INCH], CRIMP HEIGHT REFERENCE SETTING. Rows: 0.75mm2, 0.5mm2 OR 20 AWG.

- RECOMMENDED SPARE PARTS
GREASE BEARING SURFACES LIGHTLY
LUBRICATE DAILY PER THE APPLICATOR INSTRUCTION SHEET SUPPLIED WITH THE APPLICATOR.
APPLICATOR SPECIFIC DATA TO BE ENTERED INTO BLANK MEMORY CHIP AT ASSEMBLY. SEE BELOW FOR PART NUMBER:
MECHANICAL FEED WITH "SMART APPLICATOR" CONVERSION: 8-2266368-4
PNEUMATIC FEED WITH "SMART APPLICATOR" CONVERSION: 8-2266368-4
SERVO FEED WITH "FINE CRIMP HEIGHT ADJUST": 8-2266368-5
SERVO FEED WITH "NON-CRIMP HEIGHT ADJUST": 8-2266368-6
ADJUSTMENT OF THE STRIPPER MAY BE REQUIRED WHEN MOVING THE APPLICATOR BETWEEN BENCH AND LEADMAKER APPLICATIONS.
APPLY PART NUMBER 1-23419-5 LOCTITE TO THREADS OF ITEMS 62 & 180.
APPLY PART NUMBER 2-23419-6 LOCTITE TO THREADS OF ITEM 242.
FOR -6 ONLY APPLY PART NUMBER 1-23419-5 LOCTITE TO THREADS OF ITEMS 37.
GREASE THREADS, GROOVE AND O-RING ON ITEMS 35 & 252.
MAGNET, ITEM 166 MUST BE ORIENTED CORRECTLY IN ORDER TO PROPERLY ACTUATE THE COUNTER.
CRIMP HEIGHT REFERENCE SETTING WAS THE SETTING USED WHEN THE APPLICATOR WAS QUALIFIED AT THE FACTORY. ADJUSTMENT MAY BE NECESSARY WHEN RUNNING APPLICATOR IN THE FIELD.
SPARE FEED CAM STORAGE LOCATION REFER TO INSTRUCTION SHEET FOR ADDITIONAL INFORMATION.
TO CONVERT THE APPLICATOR TO A NON-CARRIER CUTTING STYLE, REMOVE ITEM 13 AND ATTACH TO THE LOCATION ON THE BACK SIDE OF THE HOUSING. REFER TO INSTRUCTION SHEET FOR ADDITIONAL INFORMATION.
WHEN ASSEMBLING -6 NON-CRIMP HEIGHT ADJUST APPLICATOR USE SHIM PACK 2119957-2 TO ALIGN APPLICATOR'S MAXIMUM WIRE CRIMP HEIGHT AT NORMAL TERMINATOR SHUT HEIGHT
THIS APPLICATOR IS SPECIFIC FOR USE IN A STRIPPER SEAL TERMINATING UNIT.

*WARNING
ON INSTALLATION, SET WIRE DISC, ITEM 40 TO LARGEST WIRE SIZE SETTING. USE OF SETTINGS BELOW MINIMUM REQUIRED CRIMP HEIGHT SETTING WILL CAUSE DAMAGE TO CRIMP TOOLING.

Table with columns: ITEM NO, DESCRIPTION, PART NO. Rows: 260 APPLICATOR SHIM PACK, 252 O-RING, .676 ID, .070 DIA. MAT., 250 PUSH ROD, AIR FEED, 249 BUSHING, LCH5-12, MISUMI, 248 FEED CAM, AIR FEED, 247 DETENT PIN, 246 SPRING, COMPRESSION.

ATLANTIC VERSION
Shown on sheets 1 of 4 & 2 of 4
(Pacific version shown on sheets 3 of 4 & 4 of 4)

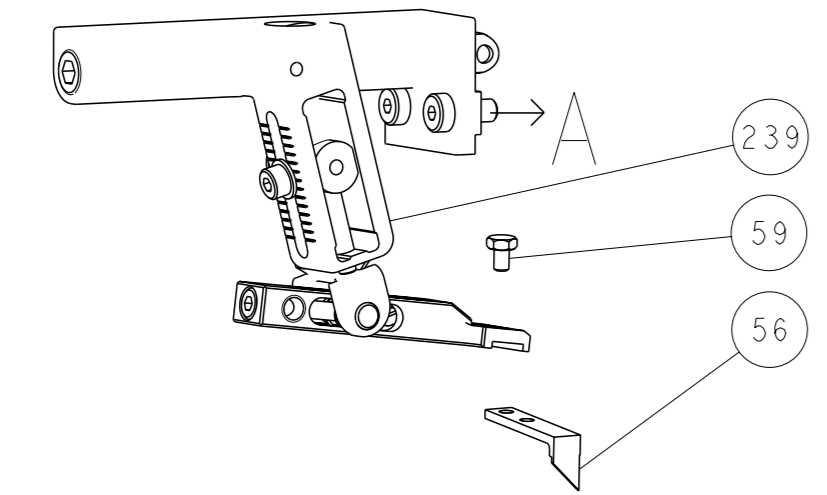
Table with columns: SET UP GAUGE, LOC, DIST, REVISIONS. Includes part number 2119599-1 and various revision dates and descriptions.

Large table with columns: ITEM NO, DESCRIPTION, PART NO, ITEM NO. Contains a comprehensive list of components, their descriptions, and part numbers, such as RAM, AMP STYLE, SIDE FEED, NON-ADJ., CAM, SNAIL, INSULATION ADJUSTMENT, WASHER, WAVE SPRING, CREST-TO-CREST, etc.

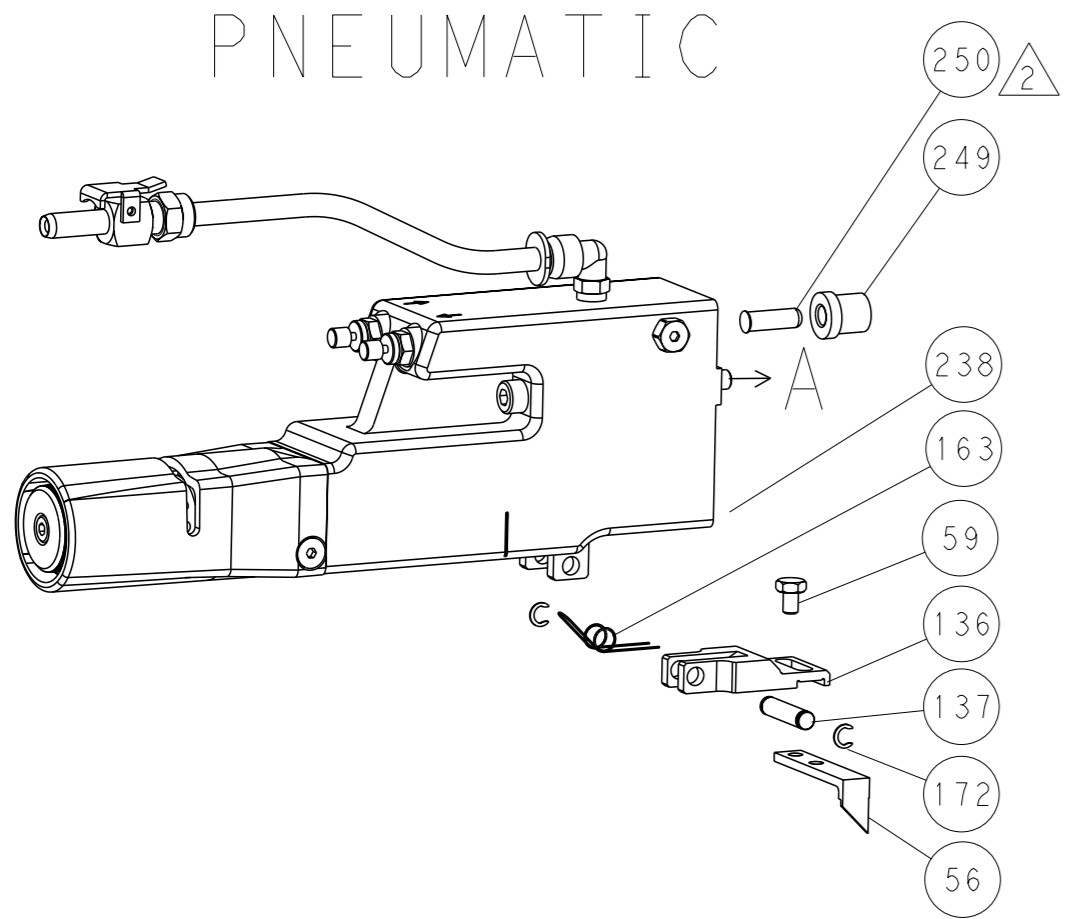
Technical drawing header/footer table including dimensions, tolerances, material, weight, and customer information. Includes fields for DIMENSIONS (mm), TOLERANCES UNLESS OTHERWISE SPECIFIED, MATERIAL, WEIGHT, and Customer Accessible Production Drawing.

LOC	DIST	REVISIONS			
A	66	REV	DATE	OWN	APVD
-	-	SEE SHEET 1	-	-	-

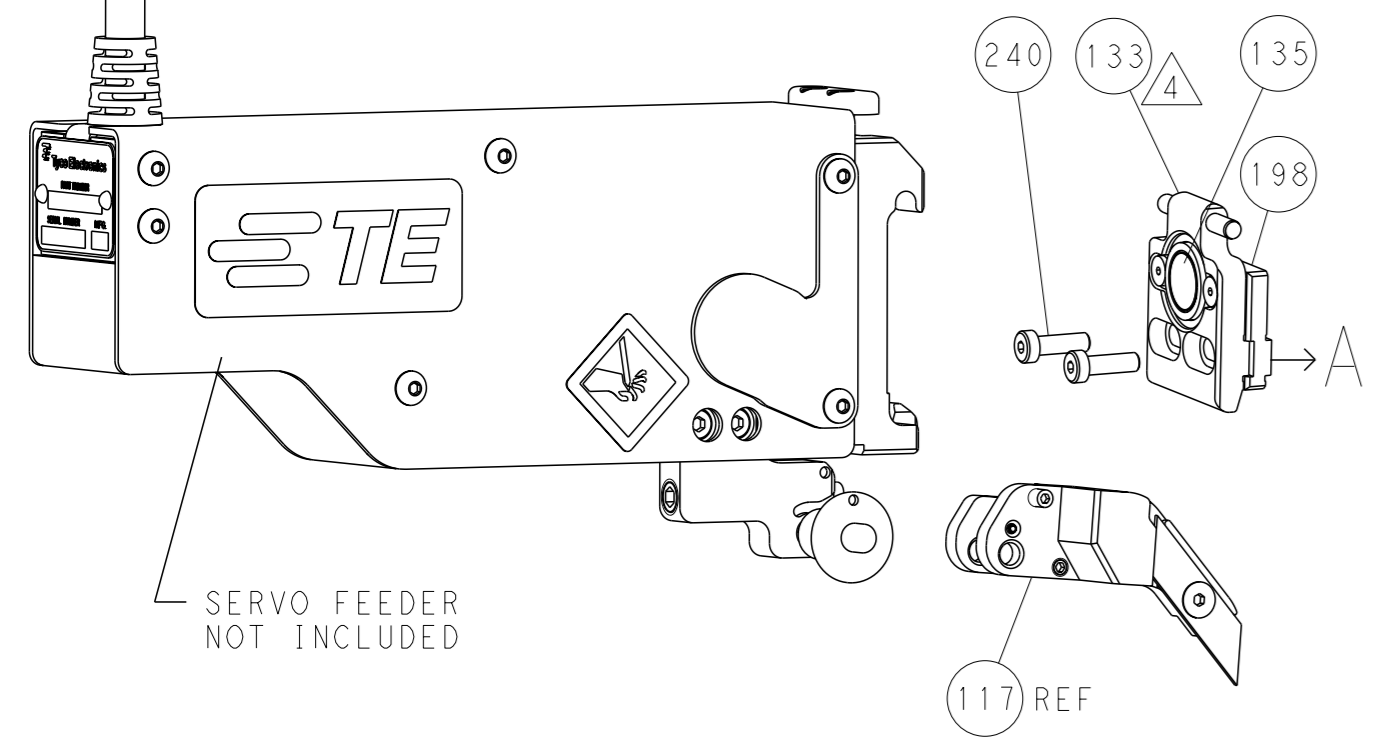
FEED TYPE MECHANICAL



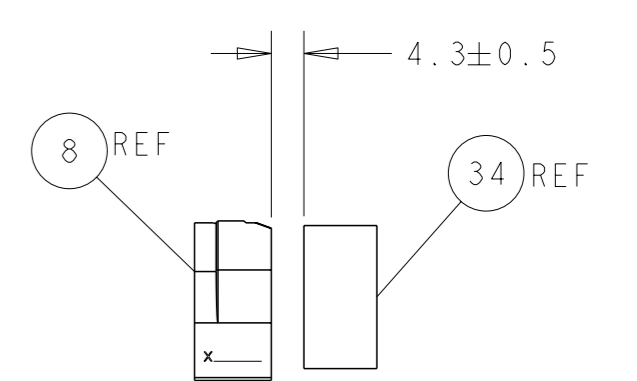
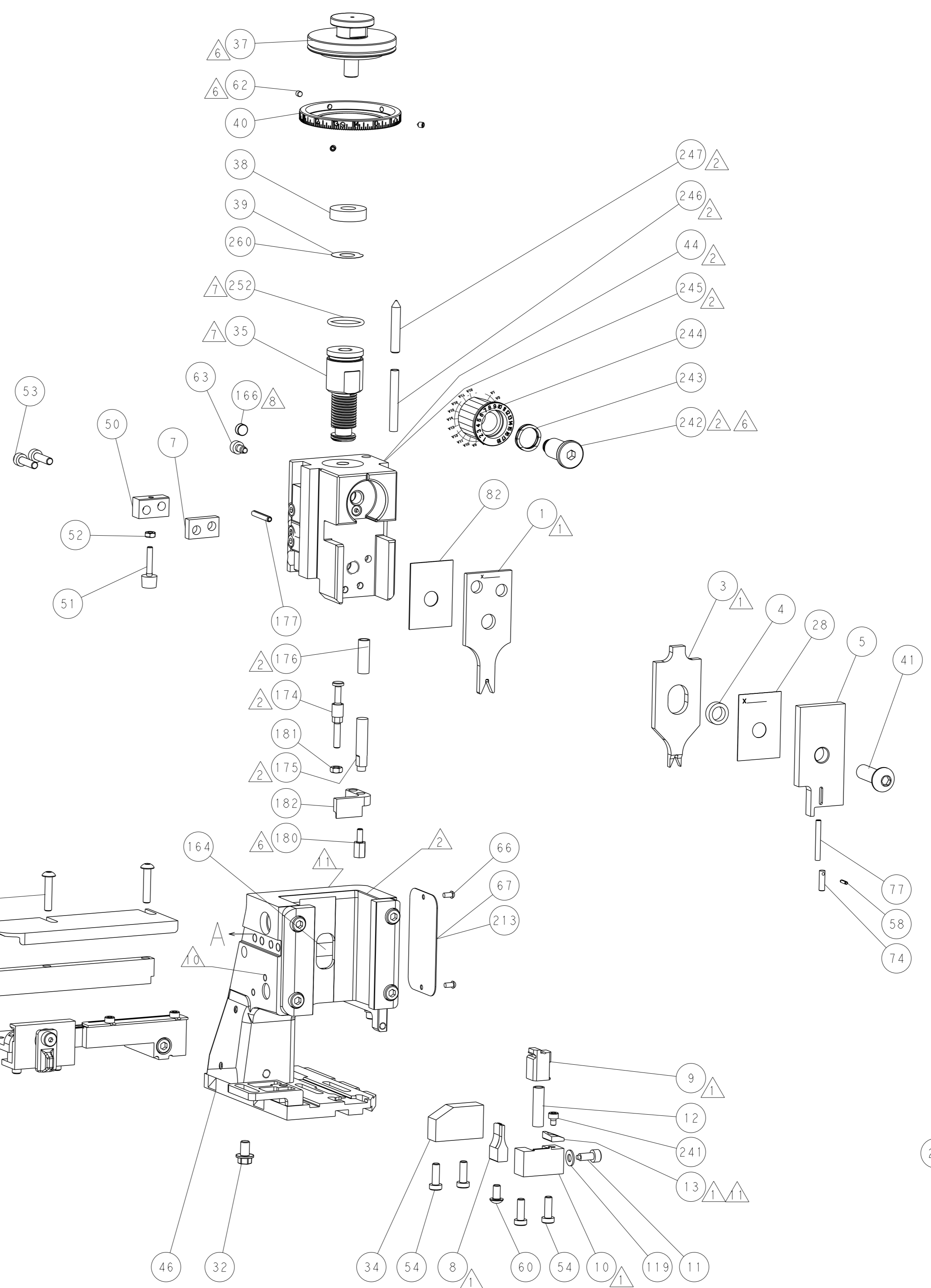
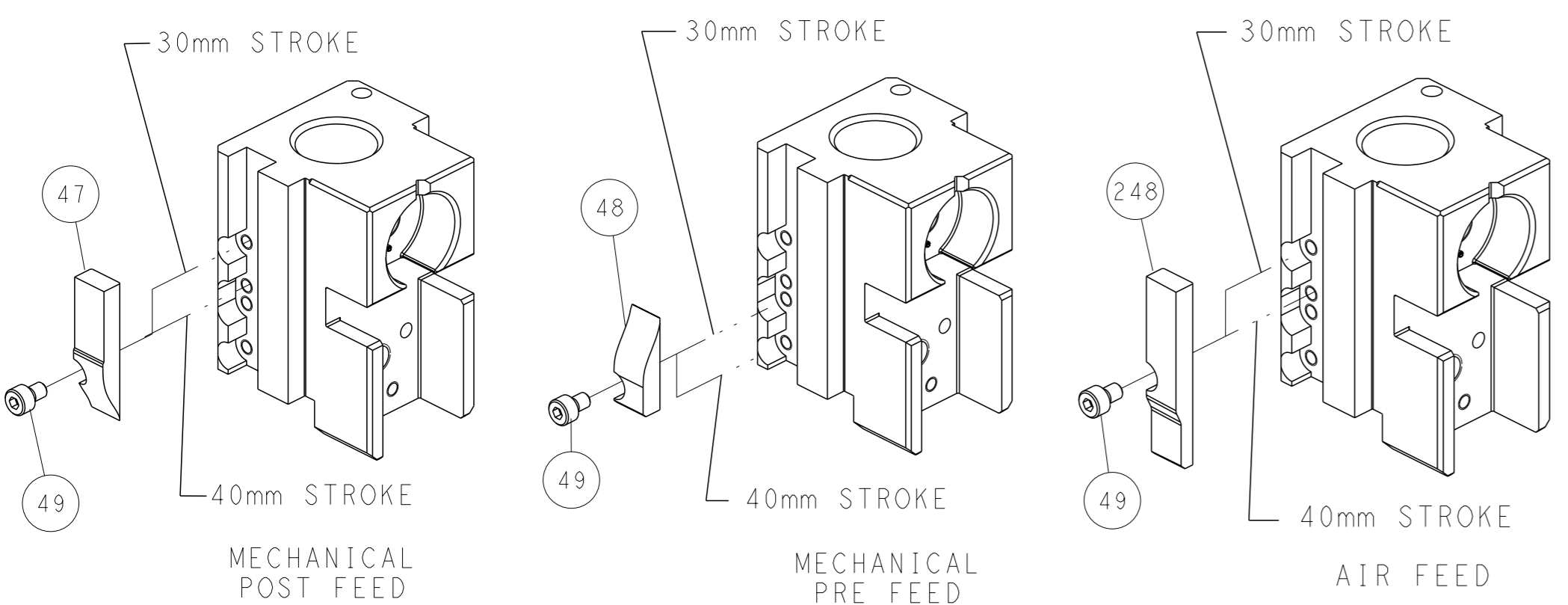
PNEUMATIC



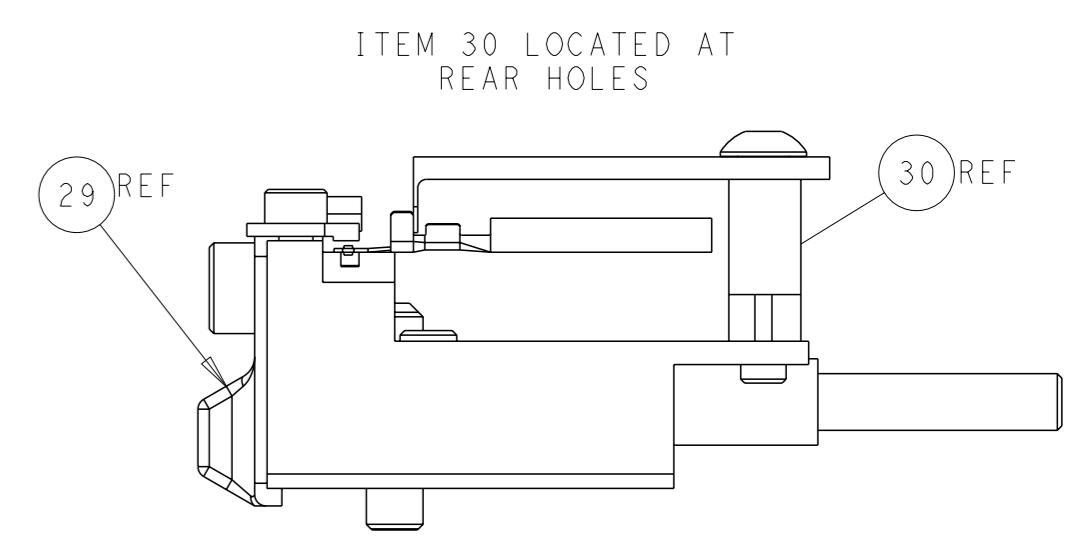
SERVO LATCH PLATE



CAM POSITIONS



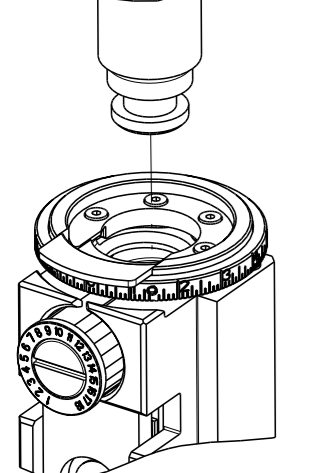
TERMINAL SUPPORT LOCATION



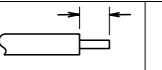
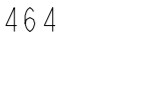
FEED TRACK POSITION GUIDE BY INSULATION BARREL

ATLANTIC VERSION
 Shown on sheets 1 of 4 & 2 of 4
 (Pacific version shown on sheets 3 of 4 & 4 of 4)

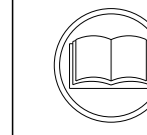
DIMENSIONS: mm 		TOLERANCES UNLESS OTHERWISE SPECIFIED: 0 PLC ± 1 PLC ± 2 PLC ± 3 PLC ± 4 PLC ± ANGLES ±		OWN: BOB HIGMAN 14JUL2014 CHK: T. ELBIN 14JUL2014 APVD: T. ELBIN 14JUL2014 PRODUCT SPEC: APPLICATION SPEC: WEIGHT: MATERIAL:		NAME: Ocean Side Feed Applicator SIZE: A1 CAGE CODE: 00779 DRAWING NO: C=2266368 SCALE: 1:2 SHEET: 2 of 4 REV: C1		TE Connectivity Harrisburg, PA 17105-3608	
--------------------	--	-----------------------------------------------------------------------------------------------------------	--	------------------------------------------------------------------------------------------------------------------------------------------------	--	-------------------------------------------------------------------------------------------------------------------------------------	--	----------------------------------------------	--

PACIFIC VERSION TERMINATOR INTERFACE ADAPTER	PART NUMBER	REVISION	DESCRIPTION	FEED TYPE	
	2-2266368-1	C	FINE CRIMP HEIGHT ADJUST	MECHANICAL	OBSOLETE
	2-2266368-2	C	FINE CRIMP HEIGHT ADJUST	PNEUMATIC	OBSOLETE
	2-2266368-5	C	FINE CRIMP HEIGHT ADJUST	SERVO LATCH PLATE	OBSOLETE
	2-2266368-7	C	FINE CRIMP HEIGHT ADJUST	NONE	OBSOLETE
	7-2266368-7	A	CRIMP TOOLING KIT	-	-

APPLICATOR DATA		
CRIMP	SIZE	TYPE
WIRE	1.40 mm (.055)	F
INSUL	1.83 mm (.072)	SPECIAL
APPLICATOR INSTRUCTIONS 408-10389		

TERMINAL DATA: TE TERMINAL		TE CRIMP SPECIFICATION	
TERMINAL NAME: TAB CONTACT 1.2 MM			
WIRE STRIP LENGTH 3.30-3.90 mm (.130-.154 IN)		INSULATION DIAMETER RANGE Ø1.40-1.90 mm (.055-.075 IN)	
TERMINAL APPLICATION SPECIFICATION 114-18464			
TERMINALS APPLIED			
TE TERMINAL	TE TERMINAL	TE TERMINAL	TE TERMINAL
1418760-1	1418760-2	1418760-3	5-1418760-1
5-1418760-2	5-1418760-3		

WIRE SIZE	CRIMP HEIGHT mm [INCH]	CRIMP HEIGHT REFERENCE SETTING
0.75mm2	1.05 +/- 0.03 [.041 +/- .001]	7.6
0.5mm2 OR 20 AWG	0.93 +/- 0.03 [.037 +/- .001]	9.0



- △ RECOMMENDED SPARE PARTS
- △ GREASE BEARING SURFACES LIGHTLY
- 3. LUBRICATE DAILY PER THE APPLICATOR INSTRUCTION SHEET SUPPLIED WITH THE APPLICATOR.
- △ 4 APPLICATOR SPECIFIC DATA TO BE ENTERED INTO BLANK MEMORY CHIP AT ASSEMBLY. SEE BELOW FOR PART NUMBER:
 MECHANICAL FEED WITH "SMART APPLICATOR" CONVERSION: 8-2266368-4
 PNEUMATIC FEED WITH "SMART APPLICATOR" CONVERSION: 8-2266368-4
 SERVO FEED WITH "FINE CRIMP HEIGHT ADJUST": 8-2266368-5
- 5. ADJUSTMENT OF THE STRIPPER MAY BE REQUIRED WHEN MOVING THE APPLICATOR BETWEEN BENCH AND LEADMAKER APPLICATIONS.
- △ 6 APPLY PART NUMBER 1-23419-5 LOCTITE TO THREADS OF ITEM 62 & 180. APPLY PART NUMBER 2-23419-6 LOCTITE TO THREADS OF ITEM 242.
- △ GREASE THREADS, GROOVE AND O-RING ON ITEMS 139 & 152.
- △ 8 MAGNET MUST BE ORIENTED CORRECTLY IN ORDER TO PROPERLY ACTUATE THE COUNTER.
- △ 9 CRIMP HEIGHT REFERENCE SETTING WAS THE SETTING USED WHEN THE APPLICATOR WAS QUALIFIED AT THE FACTORY. ADJUSTMENT MAY BE NECESSARY WHEN RUNNING APPLICATOR IN THE FIELD.
- △ 10 SPARE FEED CAM STORAGE LOCATION REFER TO INSTRUCTION SHEET FOR ADDITIONAL INFORMATION.
- △ 11 TO CONVERT THE APPLICATOR TO A NON-CARRIER CUTTING STYLE, REMOVE ITEM 13 AND ATTACH TO THE LOCATION ON BACK SIDE OF THE HOUSING. REFER TO INSTRUCTION SHEET FOR ADDITIONAL INFORMATION.
- 12. THIS APPLICATOR IS SPECIFIC FOR USE IN A STRIPPER SEAL TERMINATING UNIT.

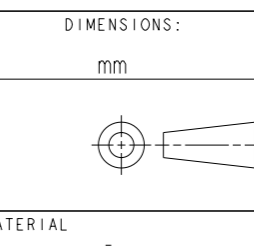
REVISONS	DATE	OWN	APVD
-	SEE SHEET 1	-	-

LOC	DIST	P	LYR	DESCRIPTION	DATE	OWN	APVD
-	-	-	-	2079764-1	243	-	-
-	-	-	-	2119083-1	242	-	-
-	-	-	-	7-18023-7	241	-	-
-	-	-	-	2168400-6	240	-	-
-	-	-	-	2119580-1	239	-	-
-	-	-	-	2063440-1	238	-	-
-	-	-	-	2119740-2	213	-	-
-	-	-	-	1901094-3	198	-	-
-	-	-	-	4-1722335-3	182	-	-
-	-	-	-	1-5018030-0	181	-	-
-	-	-	-	1-1752354-8	180	-	-
-	-	-	-	9931111-1	177	-	-
-	-	-	-	5-22280-0	176	-	-
-	-	-	-	1752353-3	175	-	-
-	-	-	-	1901680-2	174	-	-
-	-	-	-	21045-3	172	-	-
-	-	-	-	994969-1	166	-	-
-	-	-	-	994970-2	164	-	-
-	-	-	-	240638-1	163	-	-
-	-	-	-	8-21084-1	152	-	-
-	-	-	-	2119641-2	151	-	-
-	-	-	-	2119798-2	145	-	-
-	-	-	-	2079383-8	144	-	-
-	-	-	-	2168400-5	143	-	-
-	-	-	-	2119653-2	142	-	-
-	-	-	-	1-2119656-0	141	-	-
-	-	-	-	2119650-1	140	-	-
-	-	-	-	2119092-2	139	-	-
-	-	-	-	3-23627-7	137	-	-
-	-	-	-	2119799-1	136	-	-
-	-	-	-	SEE NOTE 4	135	-	-
-	-	-	-	1633743-1	133	-	-
-	-	-	-	1-18028-2	119	-	-
-	-	-	-	2119944-1	117	-	-
-	-	-	-	455888-5	82	-	-
-	-	-	-	5-547505-2	77	-	-
-	-	-	-	854769-5	74	-	-
-	-	-	-	2119956-1	71	-	-
-	-	-	-	2119740-1	67	-	-
-	-	-	-	2168078-1	66	-	-
-	-	-	-	2119793-1	63	-	-
-	-	-	-	992763-5	62	-	-
-	-	-	-	5-18022-5	59	-	-
-	-	-	-	21028-2	58	-	-
-	-	-	-	1338685-1	56	-	-
-	-	-	-	2168083-8	53	-	-
-	-	-	-	5018030-1	52	-	-
-	-	-	-	811242-5	51	-	-
-	-	-	-	690753-2	50	-	-
-	-	-	-	18023-9	49	-	-
-	-	-	-	2119652-1	48	-	-
-	-	-	-	2079383-7	41	-	-
-	-	-	-	2119645-1	40	-	-
-	-	-	-	2119957-1	39	-	-
-	-	-	-	2119644-1	38	-	-
-	-	-	-	3-1752356-3	34	-	-
-	-	-	-	2079383-5	33	-	-
-	-	-	-	2161328-1	32	-	-
-	-	-	-	1320908-3	30	-	-
-	-	-	-	2119959-2	29	-	-
-	-	-	-	455888-3	28	-	-
-	-	-	-	1320928-6	24	-	-
-	-	-	-	2119806-1	13	-	-
-	-	-	-	3-22280-3	12	-	-
-	-	-	-	1-356885-4	11	-	-
-	-	-	-	2119805-1	10	-	-
-	-	-	-	1633861-4	9	-	-
-	-	-	-	1333231-5	8	-	-
-	-	-	-	5-240641-0	7	-	-
-	-	-	-	1-2119780-1	5	-	-
-	-	-	-	4-238011-2	4	-	-
-	-	-	-	1633989-1	3	-	-
-	-	-	-	3-1633730-2	1	-	-

***WARNING**
ON INSTALLATION, SET WIRE DISC, ITEM 40 TO LARGEST WIRE SIZE SETTING. USE OF SETTINGS BELOW MINIMUM REQUIRED CRIMP HEIGHT SETTING WILL CAUSE DAMAGE TO CRIMP TOOLING.

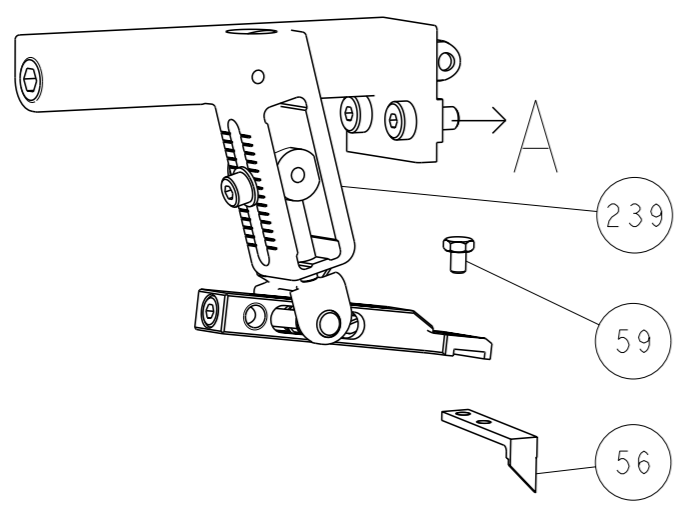
ITEM NO	DESCRIPTION	ITEM NO
2119782-1	FINE ADJUST HEAD ASM, PACIFIC STYLE	251
2119640-1	PUSH ROD, AIR FEED	250
2079988-1	BUSHING, LCH5-12, MISUMI	249
1-22279-3	SPRING, COMPRESSION	246
2119082-5	CAM, SNAIL, INSULATION ADJUSTMENT	244

PACIFIC VERSION
Shown on sheets 3 of 4 & 4 of 4
(Atlantic version shown on sheets 1 of 4 & 2 of 4)

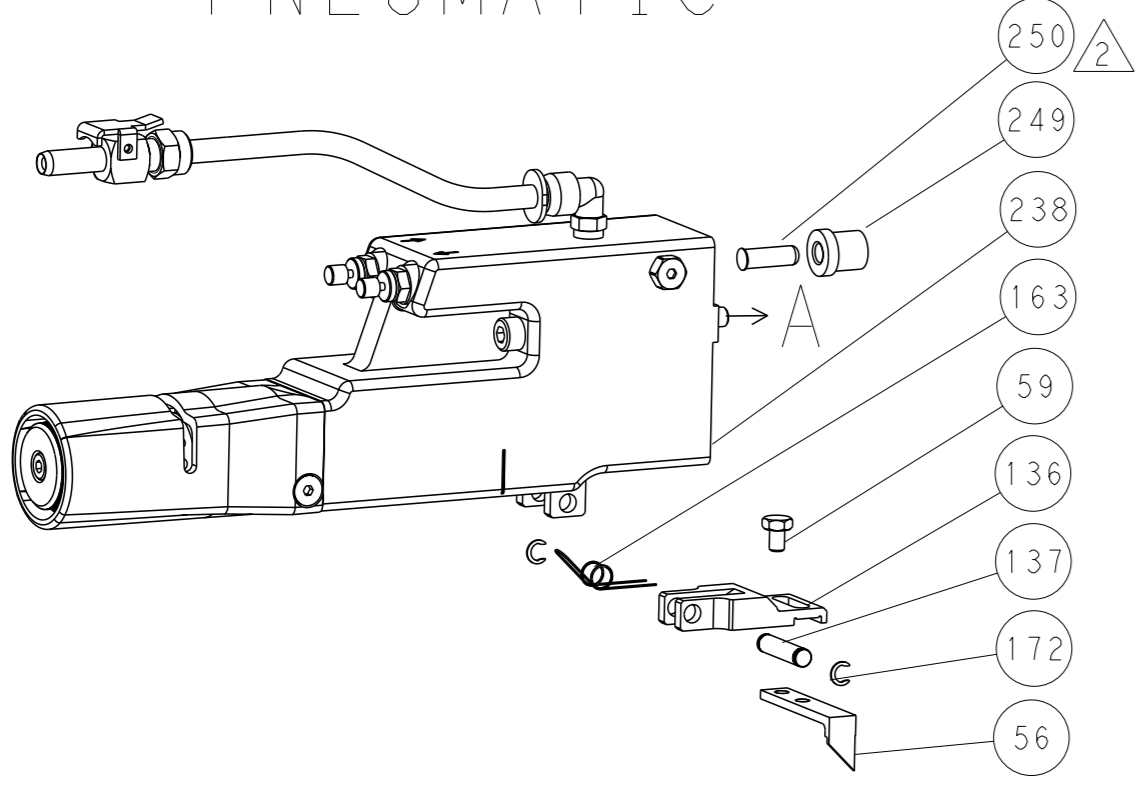
DIMENSIONS: 	TOLERANCES UNLESS OTHERWISE SPECIFIED: 0 PLC ±. 1 PLC ±. 2 PLC ±. 3 PLC ±. 4 PLC ±. ANGLES FINISH ±.	OWN: BOB HIGMAN 14JUL2014 CHK: T. ELBIN 14JUL2014 APVD: T. ELBIN 14JUL2014 PRODUCT SPEC:	NAME: TE Connectivity Harrisburg, PA 17105-3608 Ocean Side Feed Applicator
			SIZE: A1 CASE CODE: 00779 DRAWING NO: ©=2266368
			RESTRICTED TO: Customer Accessible Production Drawing SCALE: 1:2 SHEET 3 OF 4 REV: C1

LOC		DIST		REVISIONS			
A	66	P	LYR	DESCRIPTION	DATE	OWN	APVD
		-		SEE SHEET 1			

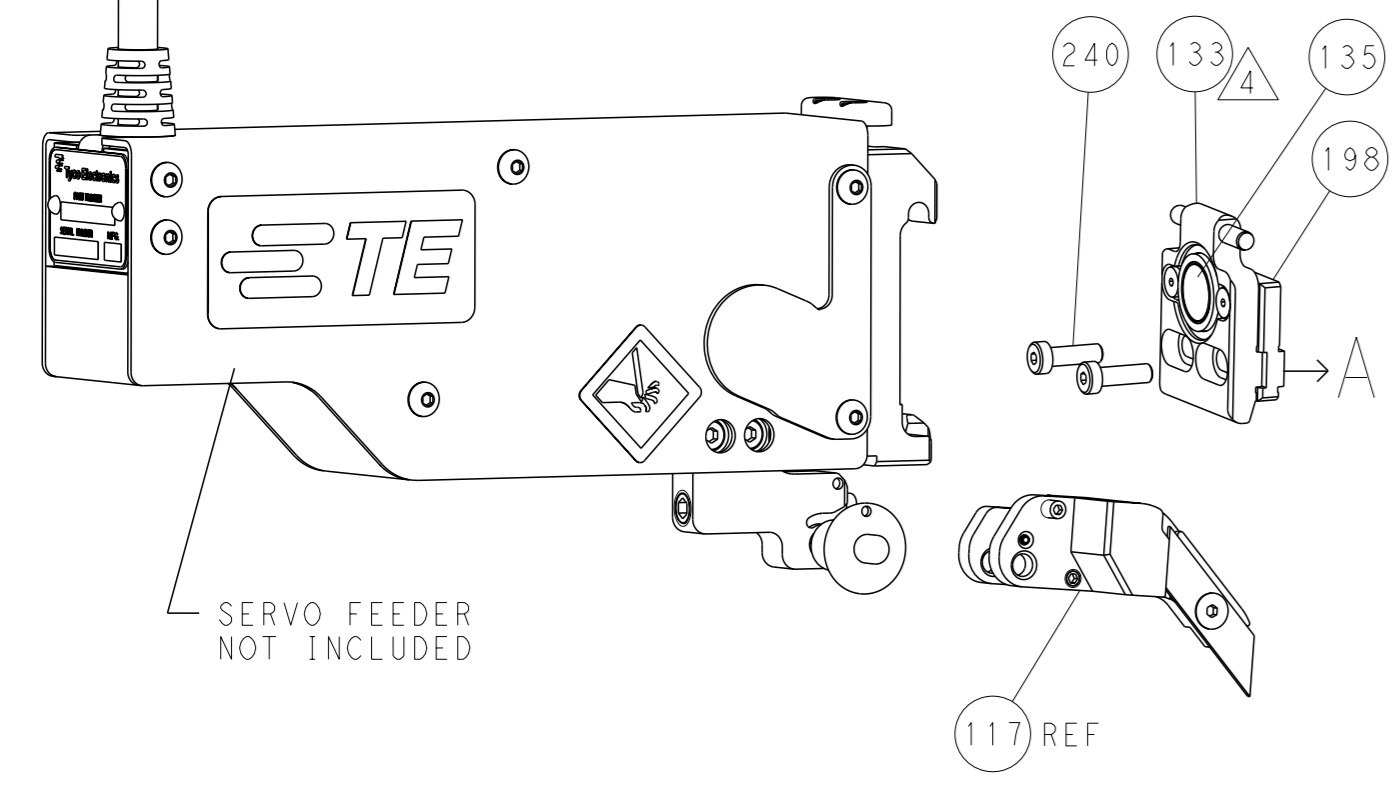
FEED TYPE MECHANICAL



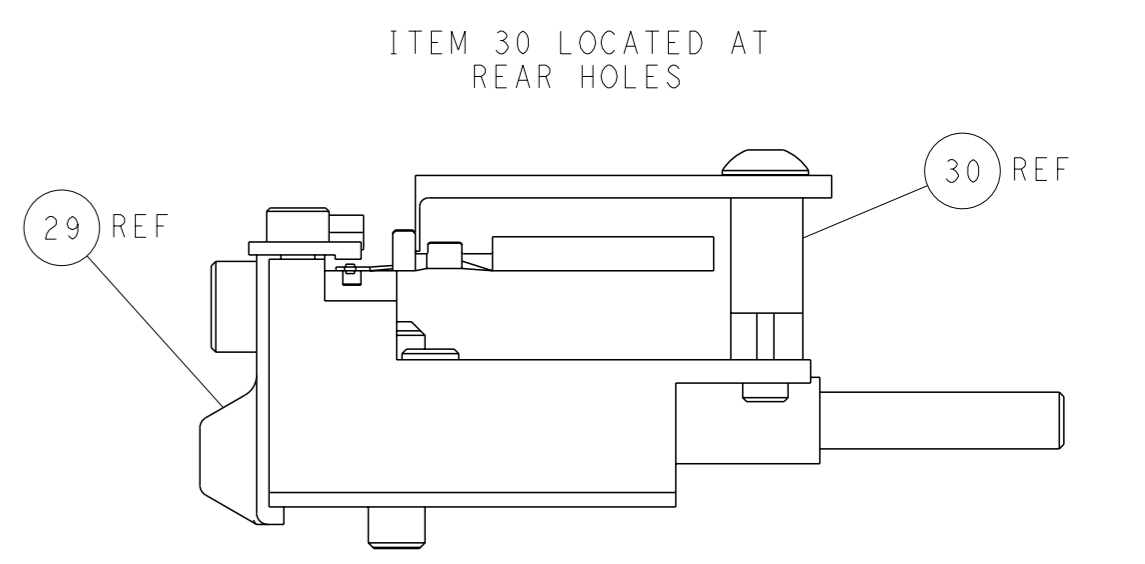
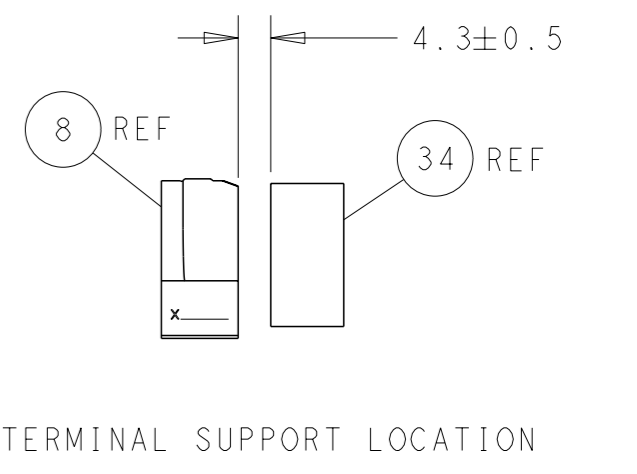
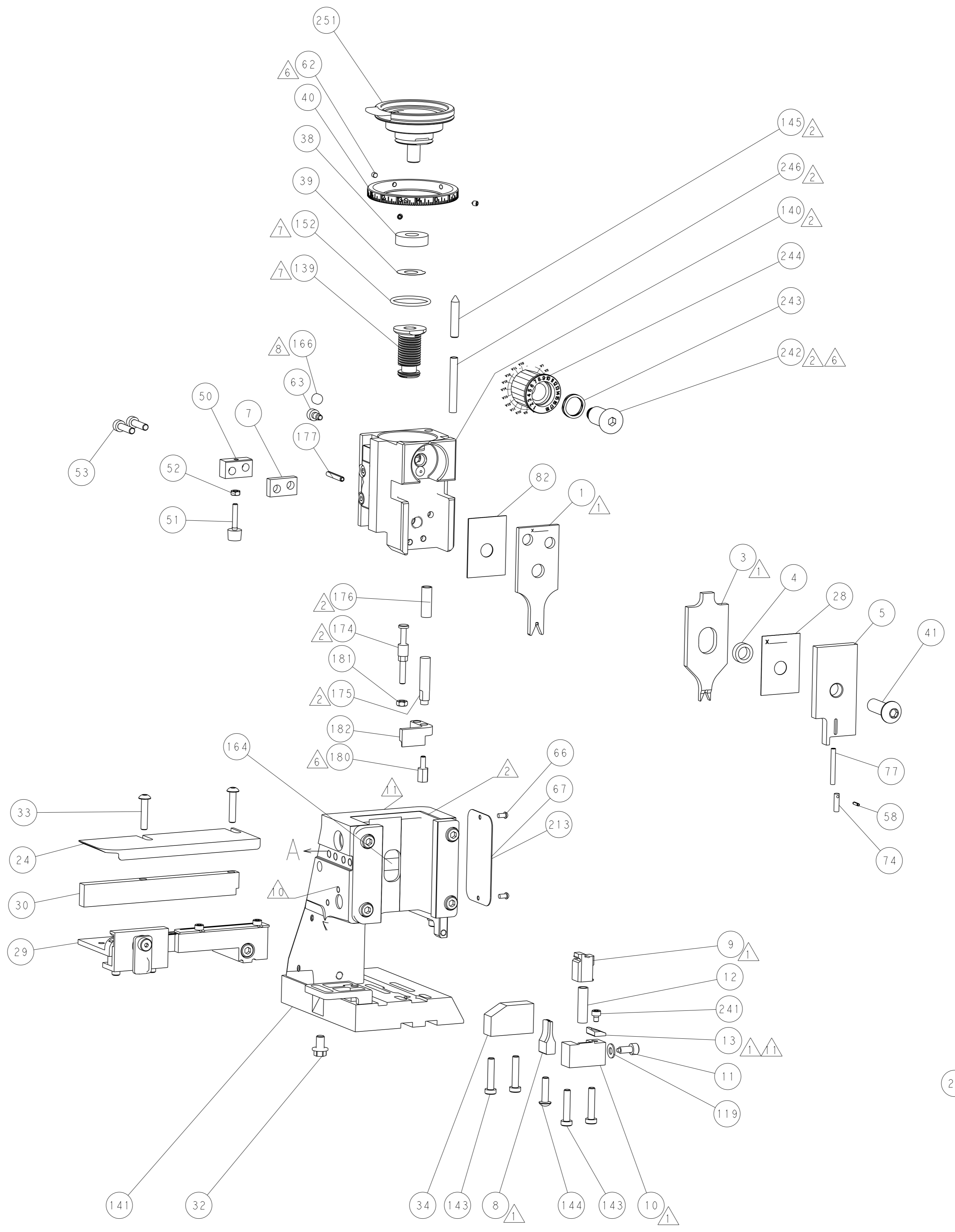
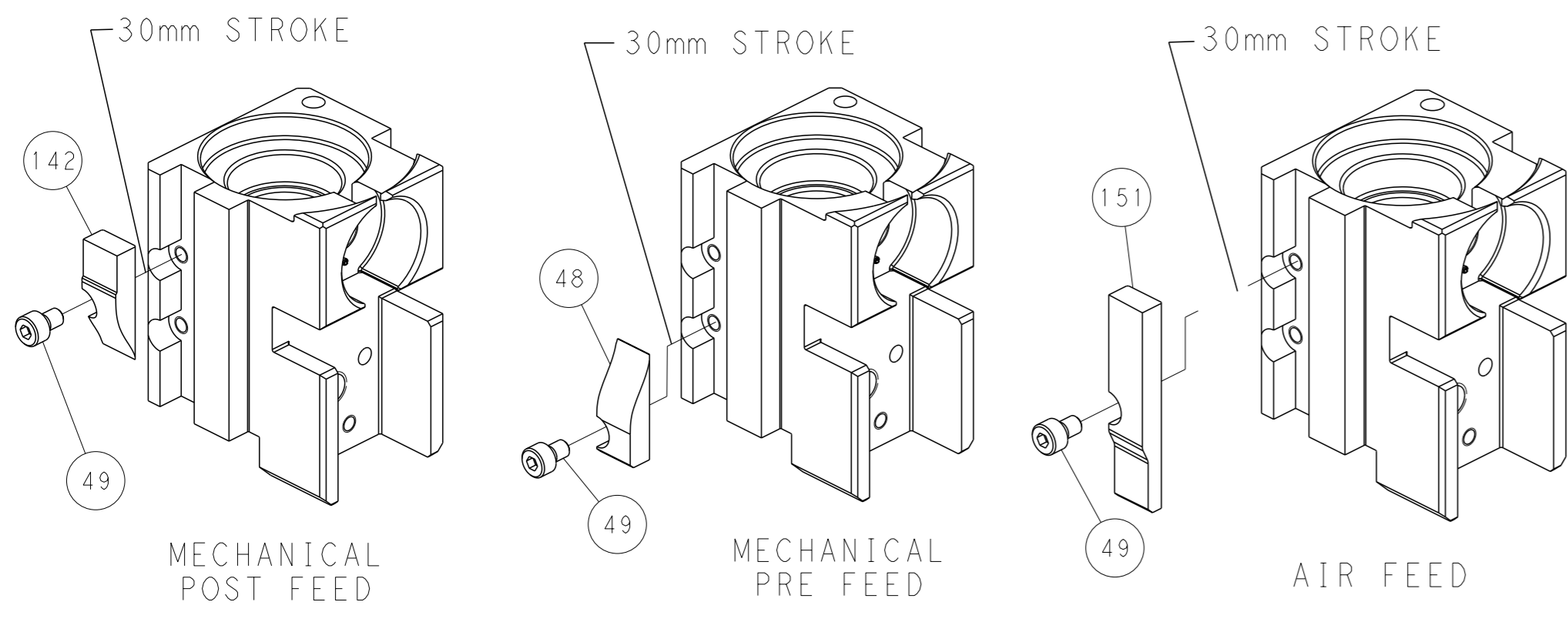
PNEUMATIC



SERVO LATCH PLATE



CAM POSITIONS



PACIFIC VERSION
 Shown on sheets 3 of 4 & 4 of 4
 (Atlantic version shown on sheets 1 of 4 & 2 of 4)

<small>THIS DRAWING IS A CONTROLLED DOCUMENT FOR TYCO ELECTRONICS CORPORATION. IT IS SUBJECT TO CHANGE AND THE USER MUST CONTACT THE DESIGNATION SHOULD BE CONTACTED FOR THE LATEST REVISION.</small>		DWN BOB HIGMAN 14JUL2014 CHK T. ELBIN 14JUL2014 APVD T. ELBIN 14JUL2014	NAME STE TE Connectivity Harrisburg, PA 17105-3608
DIMENSIONS: mm 	TOLERANCES UNLESS OTHERWISE SPECIFIED: 0 PLC ± 1 PLC ± 2 PLC ± 3 PLC ± 4 PLC ± ANGLES ± FINISH ±	PRODUCT SPEC APPLICATION SPEC WEIGHT SCALE 1:2	SIZE CAGE CODE DRAWING NO A1 00779 C=2266368 RESTRICTED TO SHEET 4 OF 4 REV C1
MATERIAL:		Customer Accessible Production Drawing	