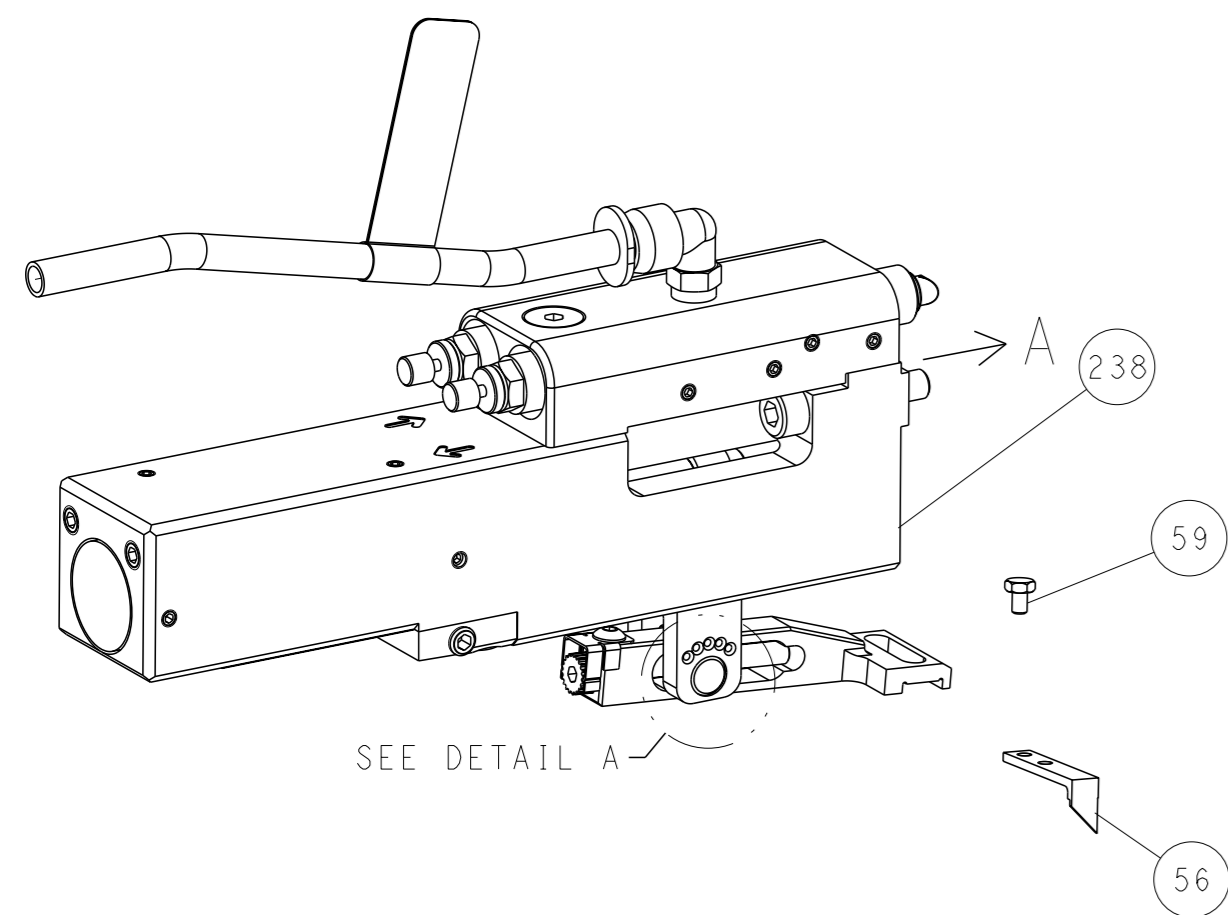


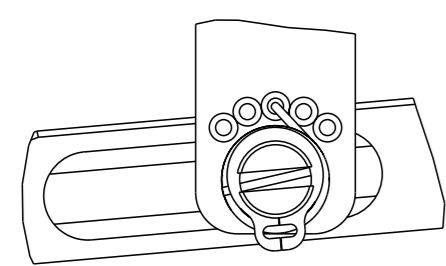
LOC	DIST	REVISIONS			
		REV	DATE	BY	APPV
A	66	-	-	-	-
		SEE SHEET 1			

FEED TYPE

PNEUMATIC

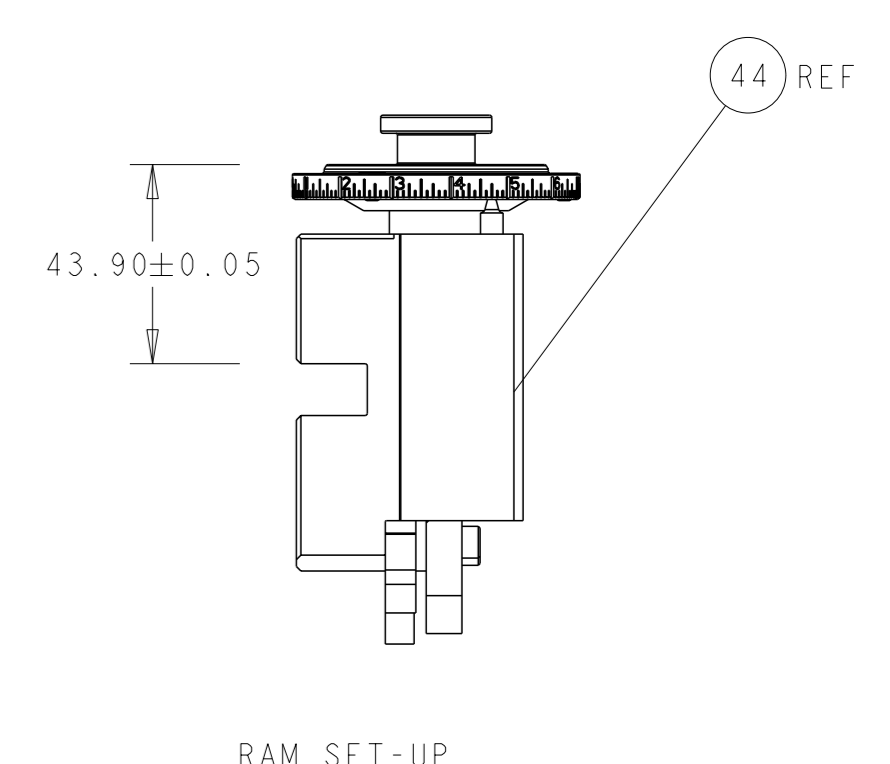
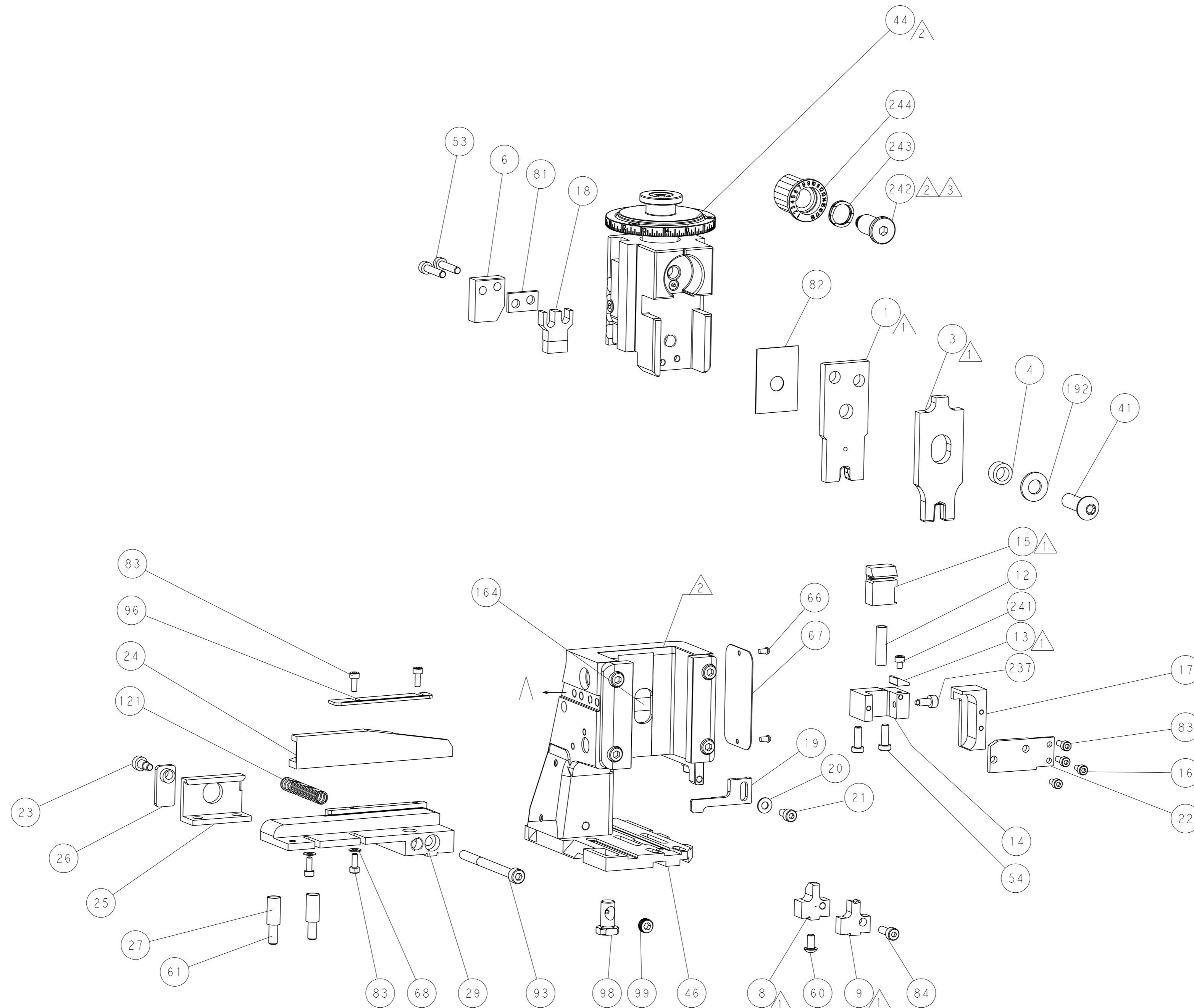
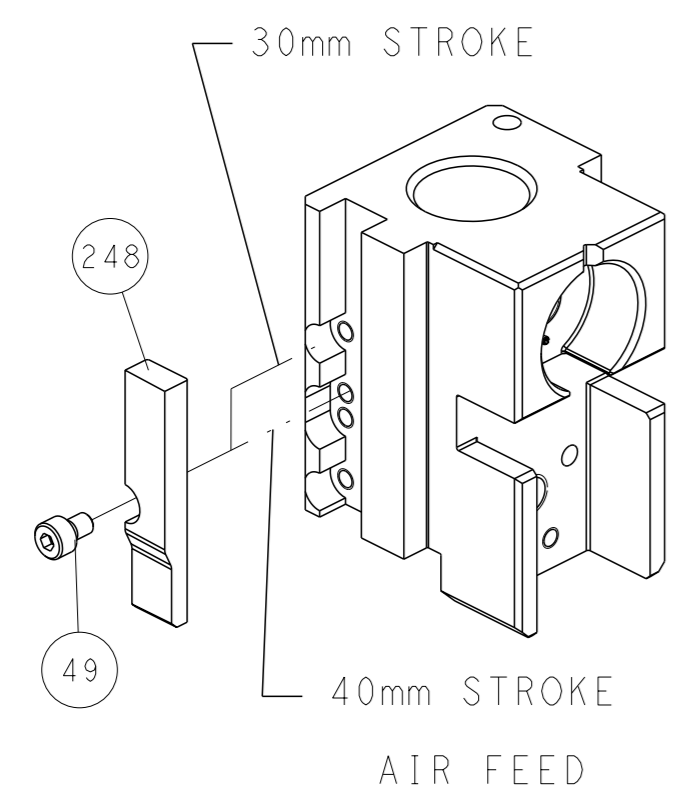


FEED SPRING SETTING POSITION (SHOWN FROM REAR SIDE)



DETAIL A

CAM POSITION



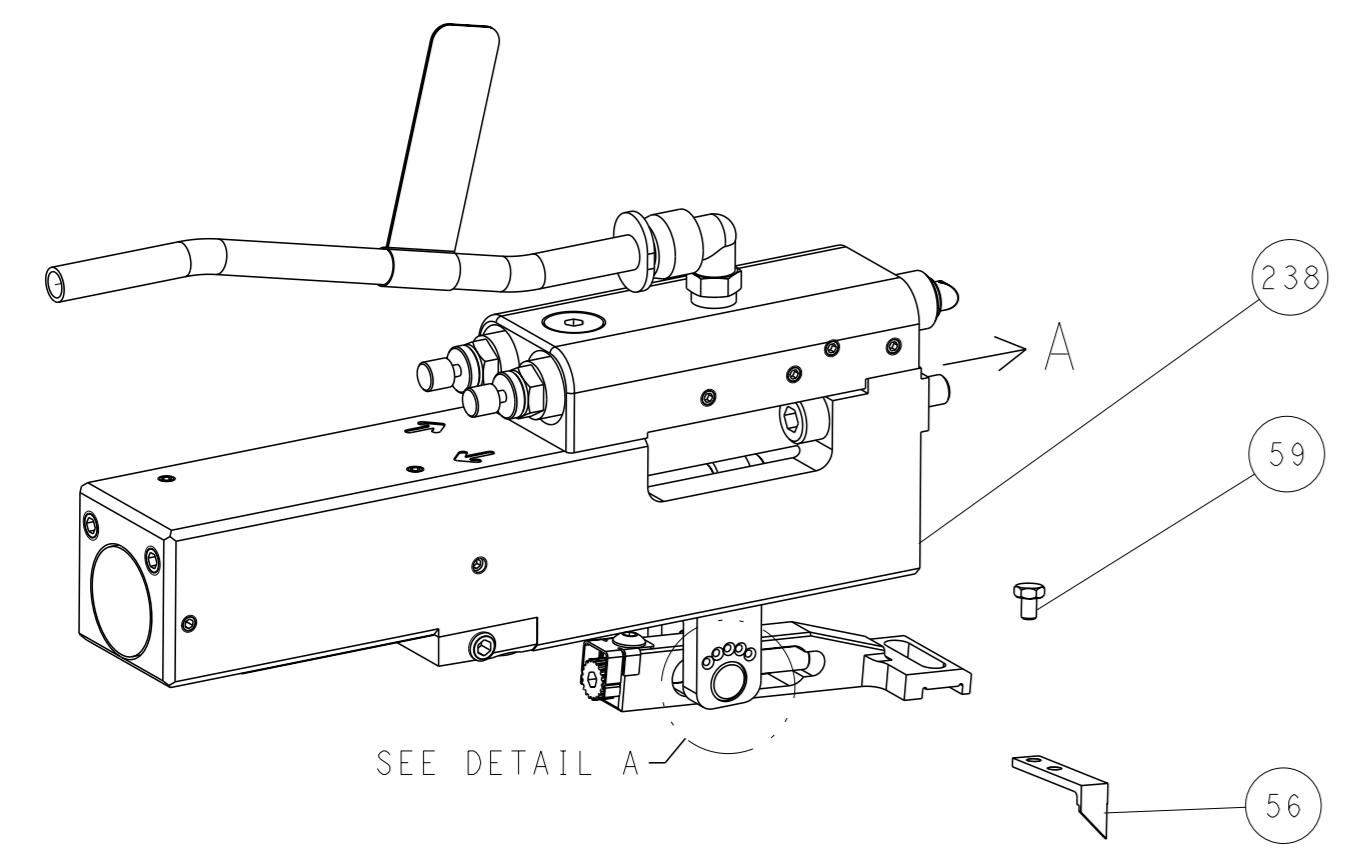
ATLANTIC VERSION
 Shown on sheets 1 of 4 & 2 of 4
 (Pacific version shown on sheets 3 of 4 & 4 of 4)

DIMENSIONS: mm 		TOLERANCES UNLESS OTHERWISE SPECIFIED: 0 PLC ± 1 PLC ± 2 PLC ± 3 PLC ± 4 PLC ± ANGLES ±		DWG: BOB HIGMAN 18OCT2013 CHK: G. BAILEY 18OCT2013 APVD: M. CLIFFORD 18OCT2013 PRODUCT SPEC APPLICATION SPEC WEIGHT MATERIAL		NAME: Ocean Side Feed Applicator SIZE: A1 CAGE CODE: 00779 DRAWING NO: C=2266077 SCALE: 1:2 SHEET: 2 of 4 REV: E		RESTRICTED TO:	
-----------------------	--	---	--	--	--	--	--	----------------	--

LOC	DIST	REVISIONS			
A	66	REV	DATE	OWN	APVD
		-	SEE SHEET 1	-	-

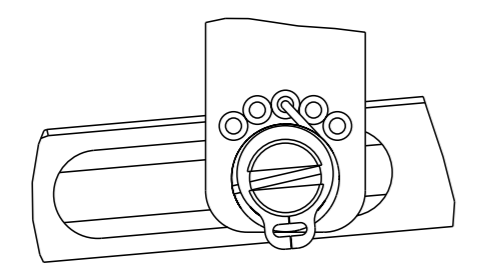
FEED TYPE

PNEUMATIC



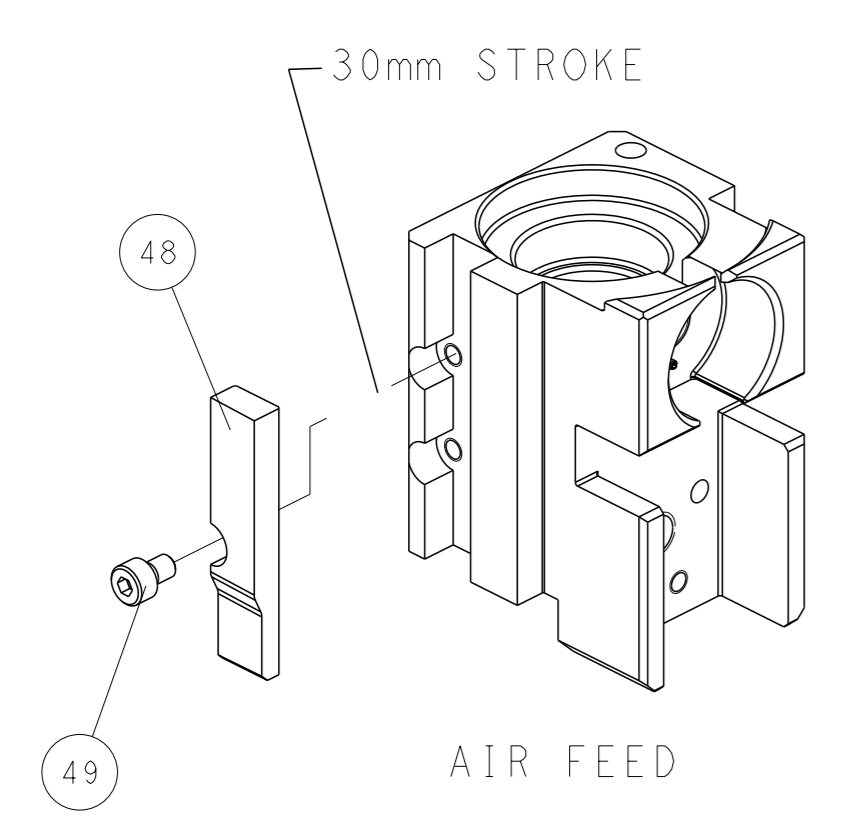
SEE DETAIL A

FEED SPRING SETTING POSITION (SHOWN FROM REAR SIDE)

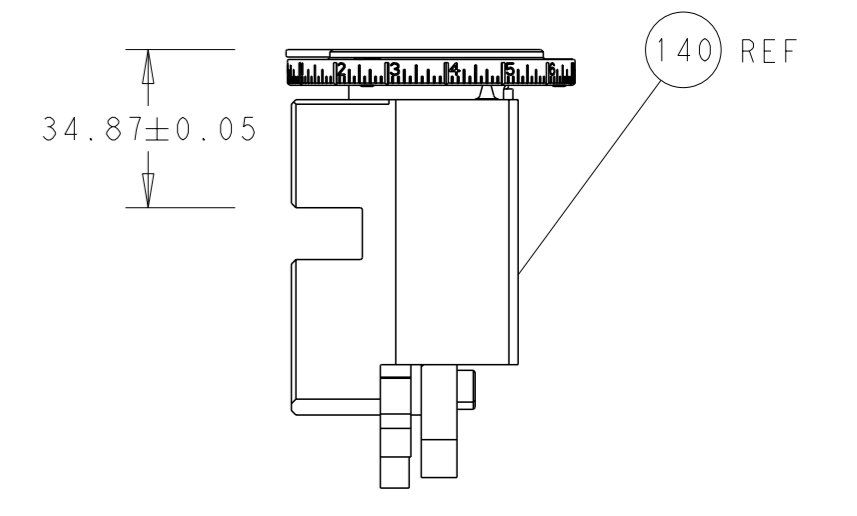
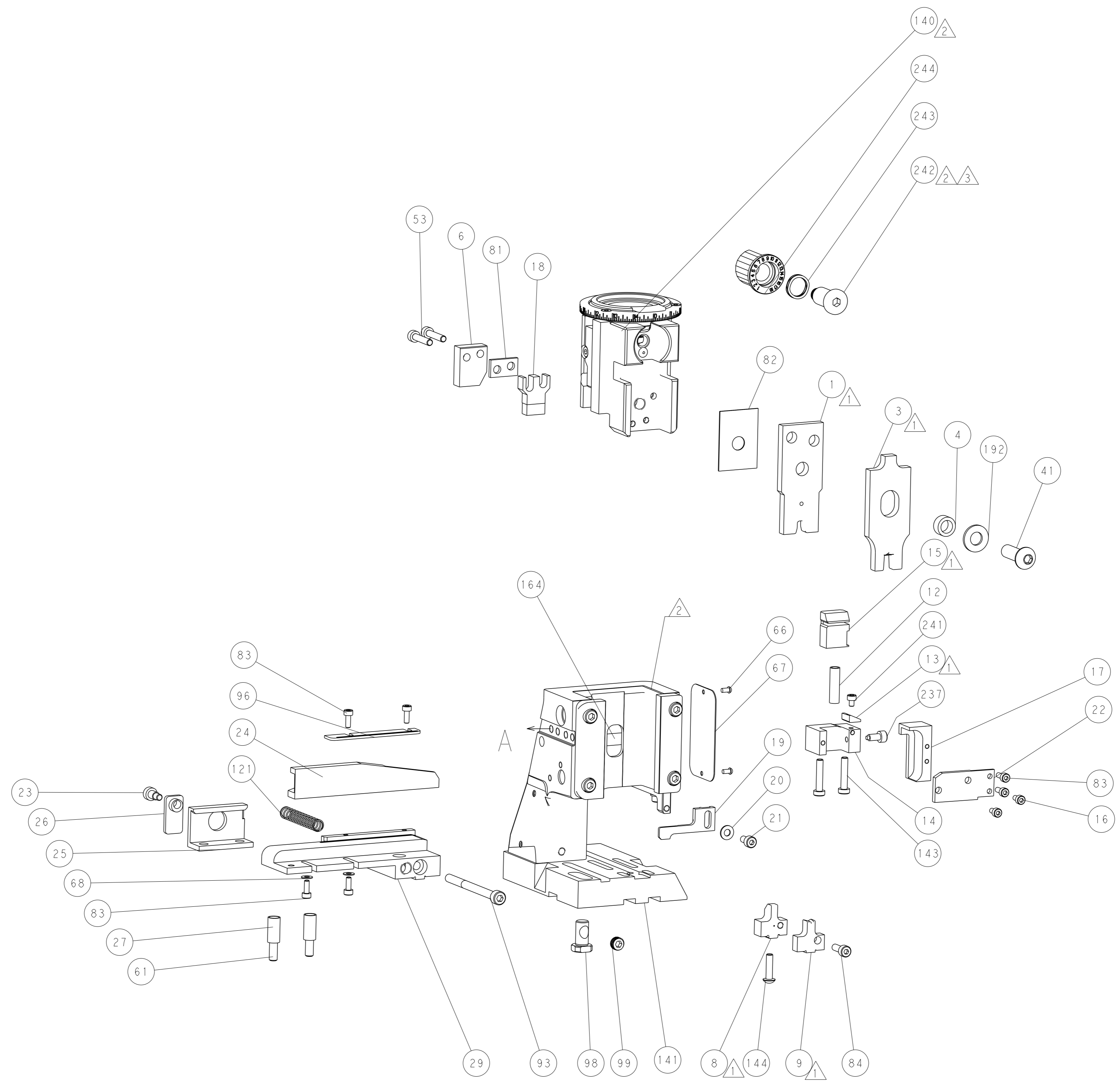


DETAIL A

CAM POSITION



AIR FEED



RAM SET-UP

PACIFIC VERSION
 Shown on sheets 3 of 4 & 4 of 4
 (Atlantic version shown on sheets 1 of 4 & 2 of 4)

<small>THIS DRAWING IS A CONTROLLED DOCUMENT FOR TYCO ELECTRONICS CORPORATION. IT IS SUBJECT TO CHANGE AND THE CONTROLLING ENGINEERING ORGANIZATION SHOULD BE CONTACTED FOR THE LATEST REVISION.</small>		DWN BOB HIGMAN 18OCT2013 CHK G. BAILEY 18OCT2013 APVD M. CLIFFORD 18OCT2013	TE Connectivity Harrisburg, PA 17105-3608
DIMENSIONS: mm TOLERANCES UNLESS OTHERWISE SPECIFIED: 0 PLC ± 1 PLC ± 2 PLC ± 3 PLC ± 4 PLC ± ANGLES FINISH *		NAME Ocean Side Feed Applicator APPLICATION SPEC PRODUCT SPEC	SIZE A1 CAGE CODE 00779 DRAWING NO. C=2266077 RESTRICTED TO
MATERIAL:		WEIGHT:	SCALE 1:2 SHEET 4 of 4 REV E