

ATLANTIC VERSION TERMINATOR INTERFACE ADAPTER	PART NUMBER	REVISION	DESCRIPTION	FEED TYPE	
	2266057-1	B	FINE CRIMP HEIGHT ADJUST	MECHANICAL	SUPERSEDED BY 5-2151345-1
	2266057-2	B	FINE CRIMP HEIGHT ADJUST	PNEUMATIC	SUPERSEDED BY 5-2151345-2
	2266057-5	B	FINE CRIMP HEIGHT ADJUST	SERVO LATCH PLATE ⁴	OBSOLETE
	2266057-6	B	NON-CRIMP HEIGHT ADJUST	SERVO LATCH PLATE ⁴	OBSOLETE
	2266057-7	B	FINE CRIMP HEIGHT ADJUST	NONE	OBSOLETE
	7-2266057-7	A	CRIMP TOOLING KIT	-	

APPLICATOR DATA		
CRIMP	SIZE	TYPE
WIRE	2.54 mm [.100]	F
INSUL	4.30 mm [.170]	O

APPLICATOR INSTRUCTIONS
408-10389

TERMINAL DATA: TE TERMINAL		TE CRIMP SPECIFICATION	
TERMINAL NAME: 1.50mm CONTACT SOCKET			
WIRE STRIP LENGTH		INSULATION DIAMETER RANGE	
5.20-5.80 mm [.205-.228 IN]		Ø2.20-3.00 mm [.087-.118 IN]	
TERMINAL APPLICATION SPECIFICATION	(A)114-18020		
	(B)114-18040		

TE TERMINAL	TE SEAL
(A) 929968-1	(A) 929990-1 (B) 828921-1
(A) 929968-7	(B) 929990-3 (B) 828904-1
(A) 929975-1	(B) 929990-4 (B) 828904-2
(A) 929975-4	(B) 929990-7 (B) 828904-3
(A) 929975-7	(B) 1-929990-0 (B) 828905-1
(A) 929975-8	(B) 1703014-1
(B) 1703050-1	(B) 1703014-4
(B) 1-1719188-0	

WIRE SIZE	CRIMP HEIGHT mm [INCH]	CRIMP HEIGHT REFERENCE SETTING
2.50mm2	1.97+/-0.03 [.078+/-0.001]	3.5
2.00mm2	1.82+/-0.03 [.072+/-0.001]	5.2
1.50mm2	1.67+/-0.03 [.066+/-0.001]	6.9
16 AWG	1.58+/-0.03 [.062+/-0.001]	8.2

- 1 RECOMMENDED SPARE PARTS
- 2 GREASE BEARING SURFACES LIGHTLY
- 3 LUBRICATE DAILY PER THE APPLICATOR INSTRUCTION SHEET SUPPLIED WITH THE APPLICATOR.
- 4 APPLICATOR SPECIFIC DATA TO BE ENTERED INTO BLANK MEMORY CHIP AT ASSEMBLY. SEE BELOW FOR PART NUMBER:
MECHANICAL FEED WITH "SMART APPLICATOR" CONVERSION: 8-2266057-4
PNEUMATIC FEED WITH "SMART APPLICATOR" CONVERSION: 8-2266057-4
SERVO FEED WITH "FINE CRIMP HEIGHT ADJUST": 8-2266057-5
SERVO FEED WITH "NON-CRIMP HEIGHT ADJUST": 8-2266057-6
- 5. ADJUSTMENT OF THE STRIPPER MAY BE REQUIRED WHEN MOVING THE APPLICATOR BETWEEN BENCH AND LEADMAKER APPLICATIONS.
- 6 APPLY PART NUMBER 1-23419-5 LOCTITE TO THREADS OF ITEMS 62 & 180. APPLY PART NUMBER 2-23419-6 LOCTITE TO THREADS OF ITEM 242. FOR -6 ONLY APPLY PART NUMBER 1-23419-5 LOCTITE TO THREADS OF ITEM 37.
- 7 GREASE THREADS, GROOVE AND O-RING ON ITEMS 35 & 252.
- 8 MAGNET, ITEM 166 MUST BE ORIENTED CORRECTLY IN ORDER TO PROPERLY ACTUATE THE COUNTER.
- 9 CRIMP HEIGHT REFERENCE SETTING WAS THE SETTING USED WHEN THE APPLICATOR WAS QUALIFIED AT THE FACTORY. ADJUSTMENT MAY BE NECESSARY WHEN RUNNING APPLICATOR IN THE FIELD.
- 10 SPARE FEED CAM STORAGE LOCATION REFER TO INSTRUCTION SHEET FOR ADDITIONAL INFORMATION.
- 11 TO CONVERT THE APPLICATOR TO A NON-CARRIER CUTTING STYLE, REMOVE ITEM 13 AND ATTACH TO THE LOCATION ON THE BACK SIDE OF THE HOUSING. REFER TO INSTRUCTION SHEET FOR ADDITIONAL INFORMATION.
- 12 WHEN ASSEMBLING -6 NON-CRIMP HEIGHT ADJUST APPLICATOR USE SHIM PACK 2119957-2 TO ALIGN APPLICATOR'S MAXIMUM WIRE CRIMP HEIGHT AT NORMAL TERMINATOR SHUT HEIGHT

***WARNING**
ON INSTALLATION, SET WIRE DISC, ITEM 40 TO LARGEST WIRE SIZE SETTING. USE OF SETTINGS BELOW MINIMUM REQUIRED CRIMP HEIGHT SETTING WILL CAUSE DAMAGE TO CRIMP TOOLING.

- 13 INSULATION RANGE QUOTED IS THAT OF THE TERMINAL.
SEAL PN 828905 - INS. DIA RANGE IS Ø2.2-3.0mm
SEAL PN 828904 - INS. DIA RANGE IS Ø1.2-2.1mm
SEAL PN 828921 - INS. DIA RANGE IS Ø2.1-3.0mm
- 14 APPLY TORQ-SEAL IN ALLEN SOCKET TO FILL HOLE AFTER FLAT HD HAS BEEN ADJUSTED TO CORRECT HEIGHT AT QUALIFICATION. APPLY #1-23419-5 LOC-TITE TO THREADS.
- 15. THIS APPLICATOR IS SPECIFIC FOR USE IN A STRIPPER SEAL TERMINATING UNIT.
- 16 USE P/N 1752356-6 WHEN RUNNING TERMINAL P/N 929990-X.

ITEM NO	DESCRIPTION	ITEM NO
261	SUPPORT, TERMINAL	1752356-6
260	APPLICATOR SHIM PACK	2119957-2
252	O-RING, .676 ID, .070 DIA, MAT.	8-21084-0
250	PUSH ROD, AIR FEED	2119640-1
249	BUSHING, LCH5-12, MISUMI	2079988-1
248	FEED CAM, AIR FEED	2119641-1
247	DETENT PIN	2119798-1
246	SPRING, COMPRESSION	1-22279-3
245	RAM, AMP STYLE, SIDE FEED, NON-ADJ.	2119758-1
244	CAM, SNAIL, INSULATION ADJUSTMENT	2119082-9
ITEM NO	DESCRIPTION	ITEM NO
-77	PART NO	-7
-76	PART NO	-6
-75	PART NO	-5
-74	PART NO	-4
-73	PART NO	-3
-72	PART NO	-2
-71	PART NO	-1

ATLANTIC VERSION
Shown on sheets 1 of 4 & 2 of 4
(Pacific version shown on sheets 3 of 4 & 4 of 4)

SET UP GAUGE	LOC	DIST	REVISIONS					
2119599-1	A	66	P	LTN	DESCRIPTION	DATE	OWN	APVD
			A		RELEASED	01NOV2013	KH	UG
			A1		ECR-13-018014	18NOV2013	KH	TE
			B		ECR-17-011866	15AUG2017	TB	TE
			B1		ECR-18-011578	19JUL2018	TB	TE

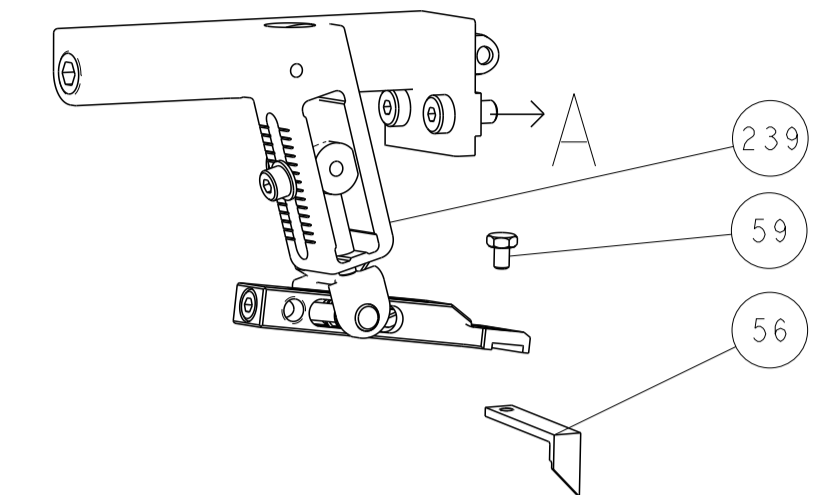
2079764-1	WASHER, WAVE SPRING, CREST-TO-CREST	243
2119083-1	RETAINER, INSULATION DIAL	242
7-18023-7	SCR, SKT HD CAP M3 X 4.0	241
2168400-6	SHCS, LOW HEAD, RoHS, M5 X 16	240
2119580-1	MECHANICAL FEED ASSEMBLY	239
2063440-1	AIR FEED MODULE	238
2119740-2	TAG IDENTIFICATION	213
1901094-3	SPACER, FEEDER	198
4-1722335-3	STRIPPER, SIDE FEED	182
1-5018030-0	NUT, HEX, REG, RoHS, M3.5	181
1-1752354-9	STANDOFF, HOLD-DOWN	180
9931111-1	PIN, SLOTTED SPRING 3.0 X 20.0	177
5-22280-0	SPRING, COMPRESSION	176
1752353-3	GUIDE PIN, HOLDDOWN	175
1901680-2	GUIDE PIN, HOLDDOWN	174
21045-3	RING, RETAIN, EXTERN, 3/16 CRESCENT	172
994969-1	MAGNET, RARE EARTH HIGH ENERGY	166
994970-2	COUNTER, MAGNETIC	164
240638-1	SPRING, FEED FINGER	163
3-23627-7	PIN, RETAIN, GRVD, 3/16 X .854	137
2119799-1	HOLDER, FEED FINGER, AF	136
SEE NOTE 4	MEMORY CHIP, PROGRAMMED	135
1633743-1	SERVO FEED LATCH ASM	133
1-18028-2	WASHER, FLAT, REG M4	119
2119944-1	FEED FINGER ASSEMBLY, SF	117
455888-4	SPACER, CRIMPER	82
2119956-1	DOCUMENTATION PACKAGE	71
2119791-9	DEPRESSOR, WIRE	70
2119943-1	WASHER, SPACER	69
2119740-1	TAG IDENTIFICATION	67
2168078-1	SCREW, DRIVE, RH, RoHS, 2 x .188	66
2119793-1	LIMITER, ADJUSTMENT BOLT	63
992763-5	SCR, SET, SOC, CONE PNT, M3 x 4.0	62
2079383-4	SCR, BHSC, RoHS (M4 X 8)	60
5-18022-5	SCR, HEX HD CAP, M4 X 6.0	59
985575-3	SCR, FLT SKT HD CAP M3 X 10.0	57
1338683-8	FEED PAWL	56
2168400-1	SHCS, LOW HEAD, RoHS, M4 X 12	54
2168083-8	SCR, SKT HD CAP, RoHS, M4 X 16	53
5018030-1	NUT, HEX, REG, RoHS, M3	52
811242-5	BUMPER, HOLD DOWN	51
690753-2	SPACER, TONKER	50
18023-9	SCR, SKT HD CAP M4 X 6.0	49
2119652-1	FEED CAM, PRE FEED	48
2119653-1	FEED CAM, POST FEED	47
2-2119656-1	APPLICATOR BASIC ASSEMBLY, SF	46
2119370-1	RAM, AMP STYLE, SIDE FEED	44
2079383-7	SCR, BHSC, RoHS (M8 X 25)	41
2119645-1	DISC, NUMBERED FA WIRE ADJUSTMENT	40
2119957-1	APPLICATOR SHIM PACK	39
1-2119644-2	RAM WASHER, PRECISION	38
2119085-1	FA HEAD, ATLANTIC STYLE	37
2119092-1	BOLT, ADJUSTMENT	35
1-1752356-7	SUPPORT, TERMINAL	34
2079383-5	SCR, BHSC, RoHS (M4 X 20)	33
2161328-1	HEX HEAD, FLANGED, M5 x 8mm LONG	32
2-1320908-2	SPACER, STRIP GUIDE	30
2119959-1	ASSEMBLY, STRIP GUIDE	29
455888-3	SPACER, CRIMPER	28
1320928-6	STRIP GUIDE	24
2119806-1	INSERT, SHEAR	13
3-22280-3	SPRING, COMPRESSION	12
1-356885-4	STOP, SHEAR	11
2119805-1	SHEAR HOLDER, FRONT	10
318707-1	FLOATING SHEAR, FRONT	9
1-1333206-6	ANVIL, COMBINATION .100	8
6-240641-5	SPACER	7
		6
2119781-5	DEPRESSOR, SHEAR	5
2-238011-1	BLOCK, CRIMPER SPACER	4
1633996-8	CRIMPER, INSULATION SPECIAL	3
455888-6	SPACER, CRIMPER	2
456407-6	CRIMPER, WIRE PREMIUM	1
ITEM NO	DESCRIPTION	ITEM NO
-77	PART NO	-7
-76	PART NO	-6
-75	PART NO	-5
-74	PART NO	-4
-73	PART NO	-3
-72	PART NO	-2
-71	PART NO	-1

DIMENSIONS:		TOLERANCES UNLESS OTHERWISE SPECIFIED:		MATERIAL:	
mm	0 PLC	±			
	1 PLC	±			
	2 PLC	±			
	3 PLC	±			
	4 PLC	±			
	ANGLES	±			
	FINISH	±			

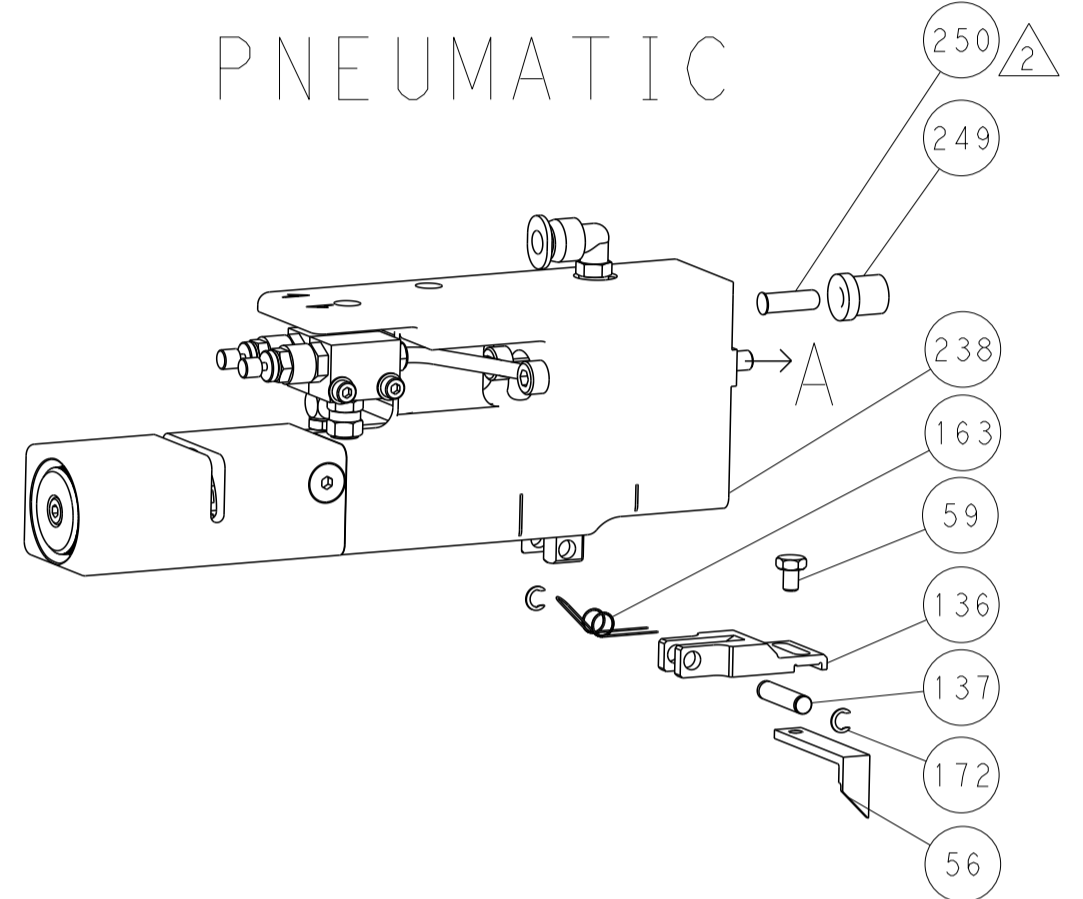
CHK	H. HUANG	25SEP2013	TE Connectivity Harrisburg, PA 17105-3608
CHK	L. ZHANG	25SEP2013	
APVD	J. GUO	25SEP2013	NAME
PRODUCT SPEC			Ocean Side Feed Applicator
APPLICATION SPEC			
SIZE	CAGE CODE	DRAWING NO	RESTRICTED TO
A1	00779	2266057	
Customer Accessible Production Drawing			SCALE 1:2 SHEET 1 OF 4 REV B1

LOC	DIST	REVISIONS					
A	66	P	LTN	DESCRIPTION	DATE	OWN	APVD
		-		SEE SHEET 1			

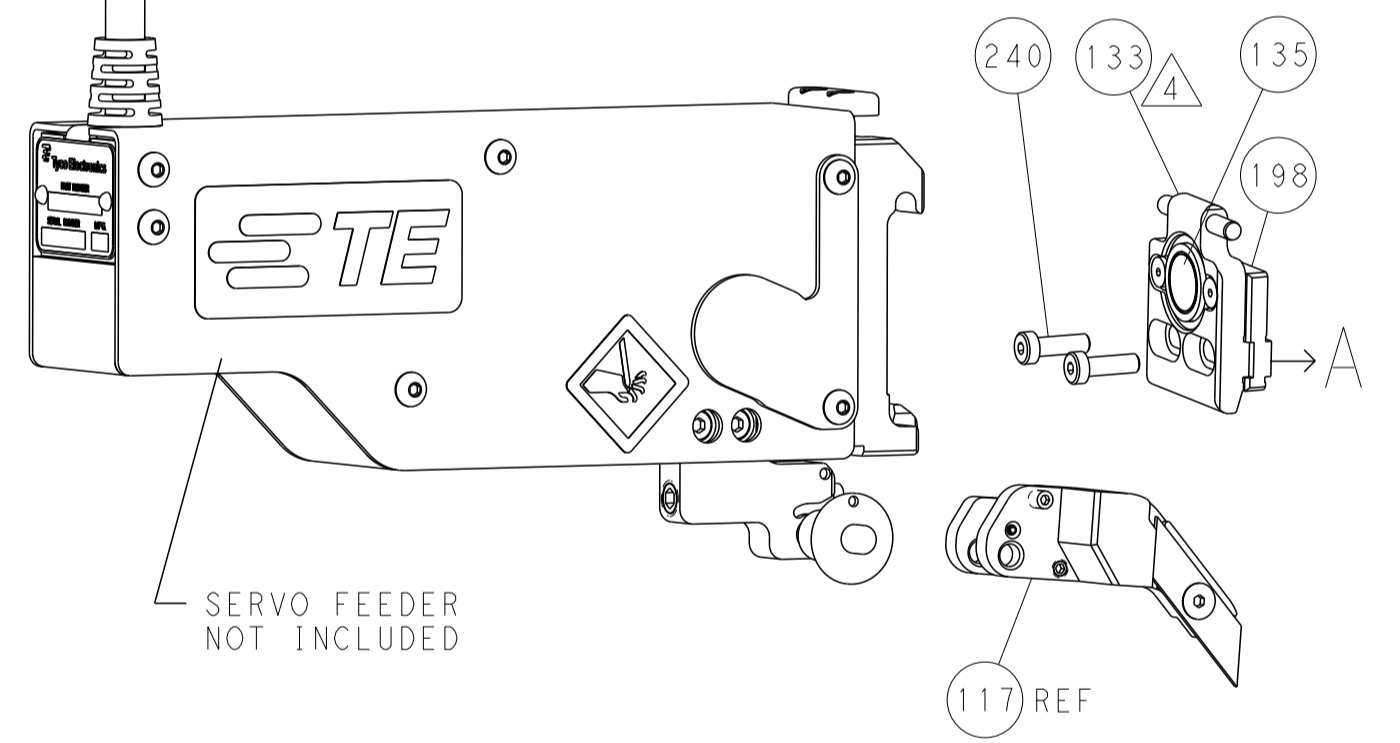
FEED TYPE MECHANICAL



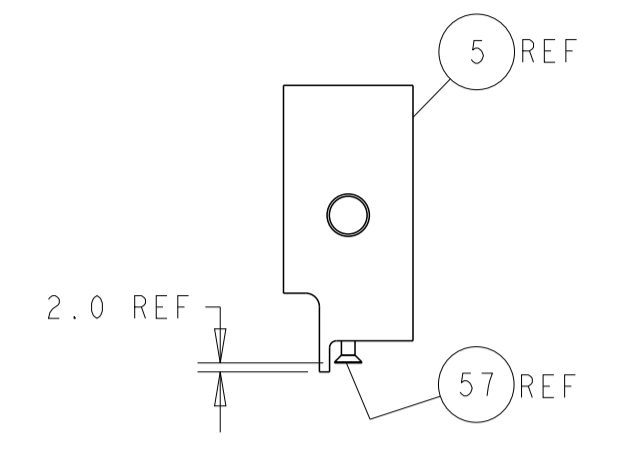
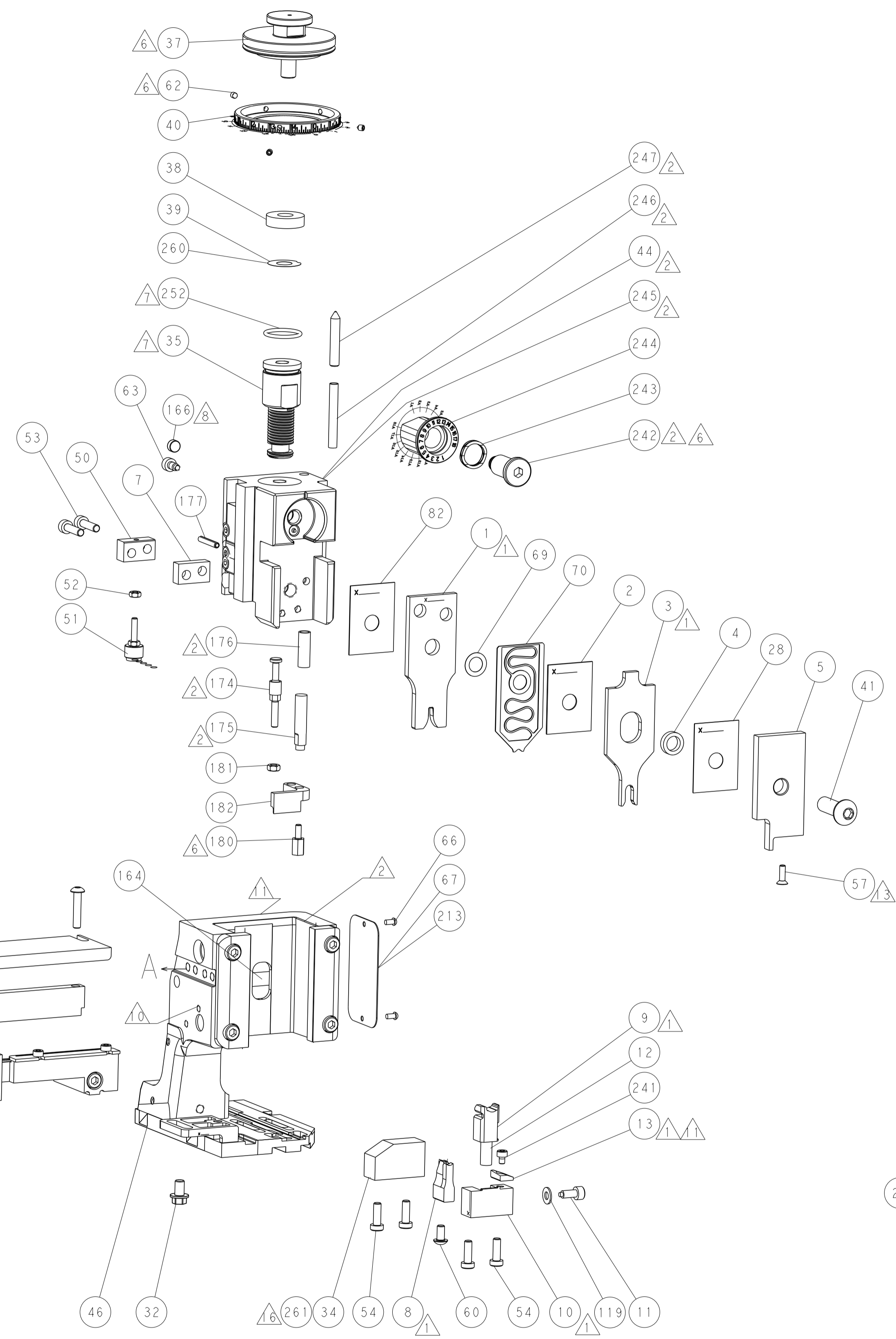
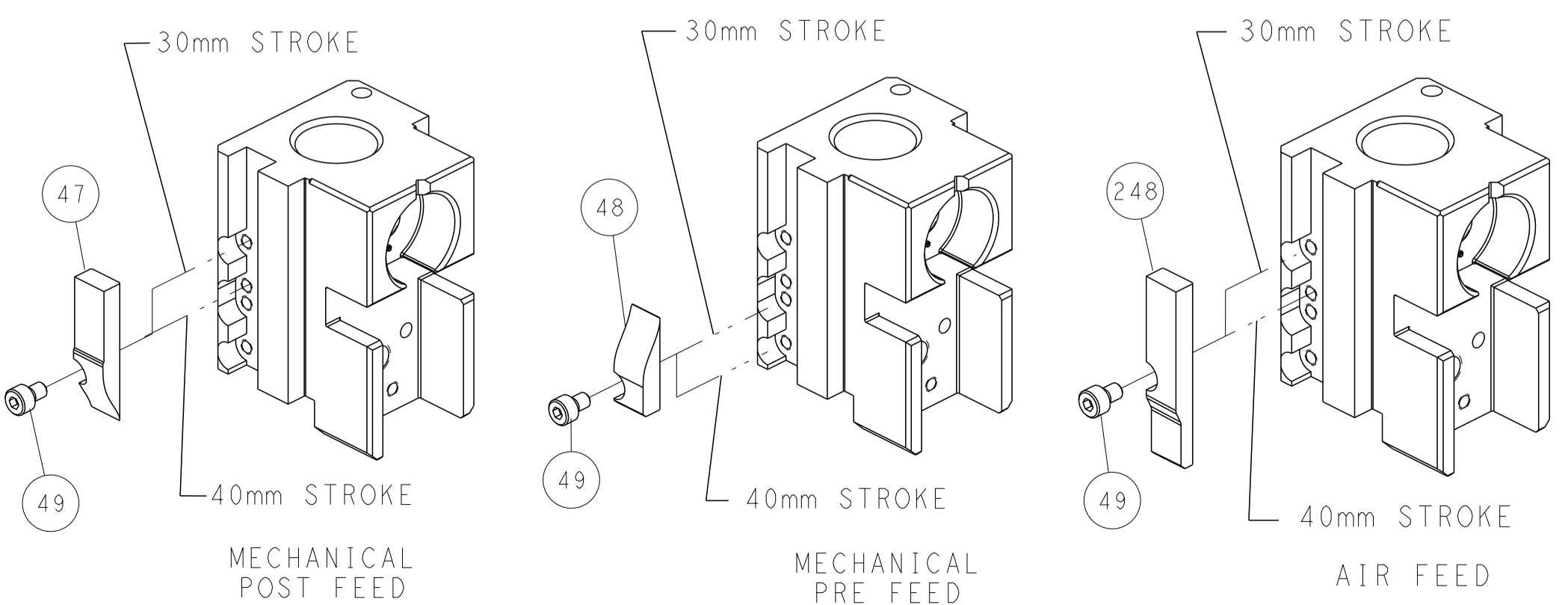
PNEUMATIC



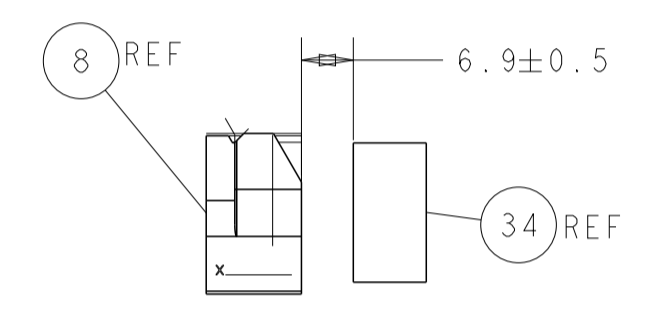
SERVO LATCH PLATE



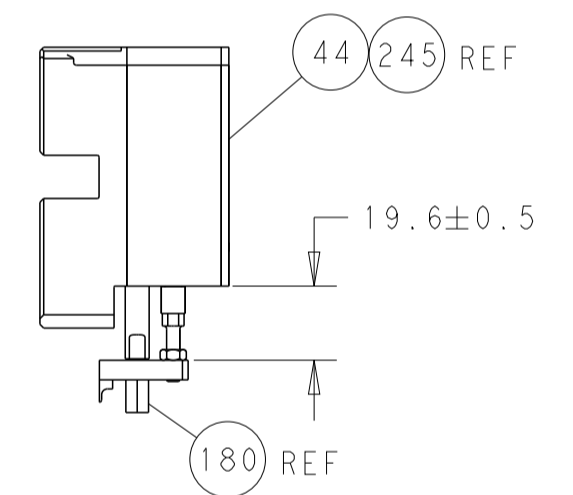
CAM POSITIONS



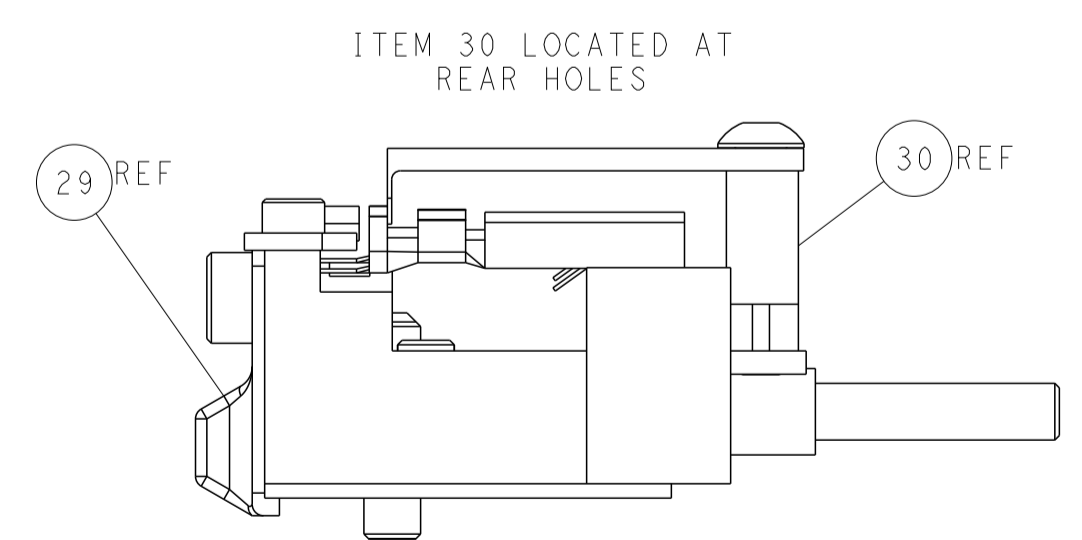
SHEAR DEPRESSOR DETAIL



TERMINAL SUPPORT LOCATION



HOLDDOWN SET-UP



FEED TRACK POSITION GUIDE BY INSULATION BARREL

ATLANTIC VERSION
 Shown on sheets 1 of 4 & 2 of 4
 (Pacific version shown on sheets 3 of 4 & 4 of 4)

DIMENSIONS: mm 		TOLERANCES UNLESS OTHERWISE SPECIFIED: 0 PLC ± 1 PLC ± 2 PLC ± 3 PLC ± 4 PLC ± ANGLES ± FINISH		DWN R. HUANG 25SEP2013 CHK L. ZHANG 25SEP2013 APVD J. GUO 25SEP2013 NAME Ocean Side Feed Applicator SIZE CAGE CODE DRAWING NO. RESTRICTED TO A1 00779 C=2266057 Customer Accessible Production Drawing SCALE 1:2 SHEET 2 OF 4 REV B1	
MATERIAL:				WEIGHT:	

THIS DRAWING IS UNPUBLISHED. RELEASED FOR PUBLICATION
 COPYRIGHT 20 BY TYCO ELECTRONICS CORPORATION. ALL RIGHTS RESERVED.

PACIFIC VERSION TERMINATOR INTERFACE ADAPTER	PART NUMBER	REVISION	DESCRIPTION	FEED TYPE	
	2-2266057-1	B	FINE CRIMP HEIGHT ADJUST	MECHANICAL	OBSOLETE
	2-2266057-2	B	FINE CRIMP HEIGHT ADJUST	PNEUMATIC	OBSOLETE
	2-2266057-5	B	FINE CRIMP HEIGHT ADJUST	SERVO LATCH PLATE	OBSOLETE
	2-2266057-7	B	FINE CRIMP HEIGHT ADJUST	NONE	OBSOLETE
	7-2266057-7	A	CRIMP TOOLING KIT	-	

APPLICATOR DATA		
CRIMP	SIZE	TYPE
WIRE	2.54 mm [.100]	F
INSUL	4.30 mm [.170]	O
APPLICATOR INSTRUCTIONS 408-10389		

TERMINAL DATA: TE TERMINAL		TE CRIMP SPECIFICATION	
TERMINAL NAME: 1.50mm CONTACT SOCKET			
WIRE STRIP LENGTH		INSULATION DIAMETER RANGE	
5.20-5.80 mm [.205-.228 IN]		Ø2.20-3.00 mm [.087-.118 IN]	
TERMINAL APPLICATION SPECIFICATION	(A)114-18020		
	(B)114-18040		
TERMINALS APPLIED			
TE TERMINAL	TE TERMINAL	TE SEAL	TE SEAL
(A) 929968-1	(A) 929990-1	(B) 828921-1	
(A) 929968-7	(B) 929990-3	(B) 828904-1	
(A) 929975-1	(B) 929990-4	(B) 828904-2	
(A) 929975-4	(B) 929990-7	(B) 828904-3	
(A) 929975-7	(B) 1-929990-0	(B) 828905-1	
(A) 929975-8	(B) 1703014-1		
(B) 1703050-1	(B) 1703014-4		
(B) 1-1719188-0			

WIRE SIZE	CRIMP HEIGHT mm [INCH]	CRIMP HEIGHT REFERENCE SETTING
2.50mm2	1.97+/-0.03 [.078+/-0.001]	3.5
2.00mm2	1.82+/-0.03 [.072+/-0.001]	5.2
1.50mm2	1.67+/-0.03 [.066+/-0.001]	6.9
16 AWG	1.58+/-0.03 [.062+/-0.001]	8.2

- 1 RECOMMENDED SPARE PARTS
- 2 GREASE BEARING SURFACES LIGHTLY
- 3. LUBRICATE DAILY PER THE APPLICATOR INSTRUCTION SHEET SUPPLIED WITH THE APPLICATOR.
- 4 APPLICATOR SPECIFIC DATA TO BE ENTERED INTO BLANK MEMORY CHIP AT ASSEMBLY. SEE BELOW FOR PART NUMBER:
 MECHANICAL FEED WITH "SMART APPLICATOR" CONVERSION: 8-2266057-4
 PNEUMATIC FEED WITH "SMART APPLICATOR" CONVERSION: 8-2266057-4
 SERVO FEED WITH "FINE CRIMP HEIGHT ADJUST": 8-2266057-5
- 5. ADJUSTMENT OF THE STRIPPER MAY BE REQUIRED WHEN MOVING THE APPLICATOR BETWEEN BENCH AND LEADMAKER APPLICATIONS.
- 6 APPLY PART NUMBER 1-23419-5 LOCTITE TO THREADS OF ITEMS 62 & 180. APPLY PART NUMBER 2-23419-6 LOCTITE TO THREADS OF ITEM 242.
- 7 GREASE THREADS, GROOVE AND O-RING ON ITEMS 139 & 152.
- 8 MAGNET MUST BE ORIENTED CORRECTLY IN ORDER TO PROPERLY ACTUATE THE COUNTER.
- 9 CRIMP HEIGHT REFERENCE SETTING WAS THE SETTING USED WHEN THE APPLICATOR WAS QUALIFIED AT THE FACTORY. ADJUSTMENT MAY BE NECESSARY WHEN RUNNING APPLICATOR IN THE FIELD.
- 10 SPARE FEED CAM STORAGE LOCATION REFER TO INSTRUCTION SHEET FOR ADDITIONAL INFORMATION.
- 11 TO CONVERT THE APPLICATOR TO A NON-CARRIER CUTTING STYLE, REMOVE ITEM 13 AND ATTACH TO THE LOCATION ON BACK SIDE OF THE HOUSING. REFER TO INSTRUCTION SHEET FOR ADDITIONAL INFORMATION.
- 12 INSULATION RANGE QUOTED IS THAT OF THE TERMINAL.
 SEAL PN 828905 - INS. DIA RANGE IS Ø2.2-3.0mm
 SEAL PN 828904 - INS. DIA RANGE IS Ø1.2-2.1mm
 SEAL PN 828921 - INS. DIA RANGE IS Ø2.1-3.0mm
- 13 APPLY TORO-SEAL IN ALLEN SOCKET TO FILL HOLE AFTER FLAT HD HAS BEEN ADJUSTED TO CORRECT HEIGHT AT QUALIFICATION.
 APPLY #1-23419-5 LOC-TITE TO THREADS.
- 14 THIS APPLICATOR IS SPECIFIC FOR USE IN A STRIPPER SEAL TERMINATING UNIT.
- 15 USE P/N 1752356-6 WHEN RUNNING TERMINAL P/N 929990-X.

SET UP GAUGE	LOC	DIST	REVISIONS					
2119599-1	A	66	P	LTN	DESCRIPTION	DATE	OWN	APVD
			-	-	SEE SHEET 1	-	-	-

-	1	1	1	1	7-18023-7	SCR, SKT HD CAP M3 X 4.0	241
-	-	2	-	-	2168400-6	SHCS, LOW HEAD, RoHS, M5 X 16	240
-	-	-	-	1	2119580-1	MECHANICAL FEED ASSEMBLY	239
-	-	-	1	-	2063440-1	AIR FEED MODULE	238
-	-	1	-	-	2119740-2	TAG IDENTIFICATION	213
-	-	1	-	-	1901094-3	SPACER, FEEDER	198
-	1	1	1	1	4-1722335-3	STRIPPER, SIDE FEED	182
-	1	1	1	1	1-5018030-0	NUT, HEX, REG, RoHS, M3.5	181
-	1	1	1	1	1-1752354-9	STANDOFF, HOLD-DOWN	180
-	1	1	1	1	993111-1	PIN, SLOTTED SPRING 3.0 X 20.0	177
-	1	1	1	1	5-22280-0	SPRING, COMPRESSION	176
-	1	1	1	1	1752353-3	GUIDE PIN, HOLDDOWN	175
-	1	1	1	1	1901680-2	GUIDE PIN, HOLDDOWN	174
-	-	-	2	-	21045-3	RING, RETAIN, EXTERN, 3/16 CRESCENT	172
-	1	1	1	1	994969-1	MAGNET, RARE EARTH HIGH ENERGY	166
-	REF	REF	REF	REF	994970-2	COUNTER, MAGNETIC	164
-	-	-	1	-	240638-1	SPRING, FEED FINGER	163
-	1	1	1	1	8-21084-1	O-RING, .801 ID, .070 DIA, MAT.	152
-	-	-	1	-	2119641-2	FEED CAM, AIR FEED	151
-	1	1	1	1	2119798-2	DETENT PIN	145
-	1	1	1	1	2079383-8	SCR, BHSC, RoHS (M4 X 16)	144
-	4	4	4	4	2168400-5	SHCS, LOW HEAD, RoHS, M4 X 20	143
-	-	-	-	1	2119653-2	FEED CAM, POST FEED	142
-	1	1	1	1	2-2119656-2	APPLICATOR BASIC ASSEMBLY, SF	141
-	1	1	1	1	2119650-1	RAM, ASIAN STYLE, SIDE FEED	140
-	1	1	1	1	2119092-2	BOLT, ADJUSTMENT	139
-	-	-	1	-	3-23627-7	PIN, RETAIN, GRVD, 3/16 X .854	137
-	-	-	1	-	2119799-1	HOLDER, FEED FINGER, AF	136
-	-	REF	-	-	SEE NOTE 4	MEMORY CHIP, PROGRAMMED	135
-	-	1	-	-	1633743-1	SERVO FEED LATCH ASM	133
-	1	1	1	1	1-18028-2	WASHER, FLAT, REG M4	119
-	-	REF	-	-	2119944-1	FEED FINGER ASSEMBLY, SF	117
-	1	1	1	1	455888-4	SPACER, CRIMPER	82
-	1	1	1	1	2119956-1	DOCUMENTATION PACKAGE	71
-	1	1	1	1	2119791-9	DEPRESSOR, WIRE	70
-	1	1	1	1	2119943-1	WASHER, SPACER	69
-	1	-	1	1	2119740-1	TAG IDENTIFICATION	67
-	2	2	2	2	2168078-1	SCREW, DRIVE, RH, RoHS, 2 x .188	66
-	1	1	1	1	2119793-1	LIMITER, ADJUSTMENT BOLT	63
-	3	3	3	3	992763-5	SCR, SET, SOC, CONE PNT, M3 X 4.0	62
-	-	-	1	1	5-18022-5	SCR, HEX HD CAP, M4 X 6.0	59
-	1	1	1	1	985575-3	SCR, FLT SKT HD CAP M3 X 10.0	57
-	-	-	1	1	1338683-8	FEED PAWL	56
-	2	2	2	2	2168083-8	SCR, SKT HD CAP, RoHS, M4 X 16	53
-	1	1	1	1	5018030-1	NUT, HEX, REG, RoHS, M3	52
-	1	1	1	1	811242-5	BUMPER, HOLD DOWN	51
-	1	1	1	1	690753-2	SPACER, TONKER	50
-	-	-	1	2	18023-9	SCR, SKT HD CAP M4 X 6.0	49
-	-	-	-	1	2119652-1	FEED CAM, PRE FEED	48
-	1	1	1	1	2079383-7	SCR, BHSC, RoHS (M8 X 25)	41
-	1	1	1	1	2119645-1	DISC, NUMBERED FA WIRE ADJUSTMENT	40
-	1	1	1	1	2119957-1	APPLICATOR SHIM PACK	39
-	1	1	1	1	1-2119644-2	RAM WASHER, PRECISION	38
-	1	1	1	1	1-1752356-7	SUPPORT, TERMINAL	34
-	2	2	2	2	2079383-5	SCR, BHSC, RoHS (M4 X 20)	33
-	1	1	1	1	2161328-1	HEX HEAD, FLANGED, M5 X 8mm LONG	32
-	1	1	1	1	2-1320908-2	SPACER, STRIP GUIDE	30
-	1	1	1	1	2119959-1	ASSEMBLY, STRIP GUIDE	29
-	1	1	1	1	455888-3	SPACER, CRIMPER	28
-	1	1	1	1	1320928-6	STRIP GUIDE	24
-	1	1	1	1	2119806-1	INSERT, SHEAR	13
-	1	1	1	1	3-22280-3	SPRING, COMPRESSION	12
-	1	1	1	1	1-356885-4	STOP, SHEAR	11
-	1	1	1	1	2119805-1	SHEAR HOLDER, FRONT	10
-	1	1	1	1	318707-1	FLOATING SHEAR, FRONT	9
-	1	1	1	1	1-1333206-6	ANVIL, COMBINATION .100	8
-	1	1	1	1	6-240641-5	SPACER	7
-	-	-	-	-	-	-	6
-	1	1	1	1	2119781-5	DEPRESSOR, SHEAR	5
-	1	1	1	1	2-238011-1	BLOCK, CRIMPER SPACER	4
-	1	1	1	1	1633996-8	CRIMPER, INSULATION SPECIAL	3
-	1	1	1	1	455888-6	SPACER, CRIMPER	2
-	1	1	1	1	456407-6	CRIMPER, WIRE PREMIUM	1

*WARNING
 ON INSTALLATION, SET WIRE DISC, ITEM 40 TO LARGEST WIRE SIZE SETTING. USE OF SETTINGS BELOW MINIMUM REQUIRED CRIMP HEIGHT SETTING WILL CAUSE DAMAGE TO CRIMP TOOLING.

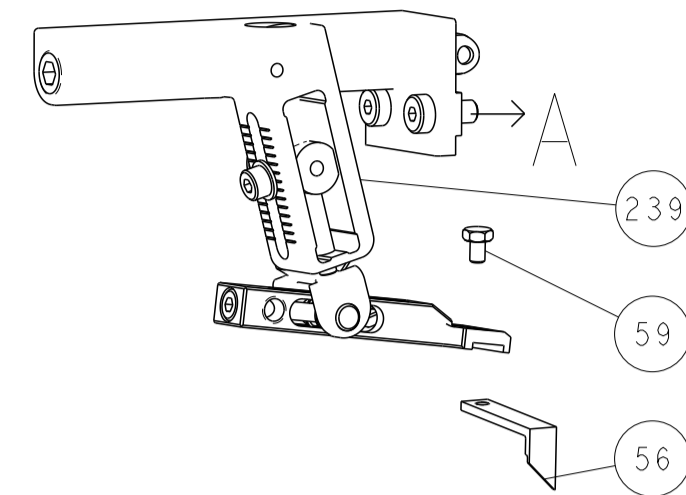
13	-	1	1	1	1	1752356-6	SUPPORT, TERMINAL	261					
-	-	1	1	1	1	2119782-1	FINE ADJUST HEAD ASM, PACIFIC STYLE	251					
-	-	-	1	-	-	2119640-1	PUSH ROD, AIR FEED	250					
-	-	-	-	1	-	2079988-1	BUSHING, LCH5-12, MISUMI	249					
-	1	1	1	1	1	1-22279-3	SPRING, COMPRESSION	246					
-	1	1	1	1	1	2119082-9	CAM, SNAIL, INSULATION ADJUSTMENT	244					
-	1	1	1	1	1	2079764-1	WASHER, WAVE SPRING, CREST-TO-CREST	243					
-	1	1	1	1	1	2119083-1	RETAINER, INSULATION DIAL	242					
6	-	77	-	27	-	25	-	22	-	21	PART NO	DESCRIPTION	ITEM NO

PACIFIC VERSION
 Shown on sheets 3 of 4 & 4 of 4
 (Atlantic version shown on sheets 1 of 4 & 2 of 4)

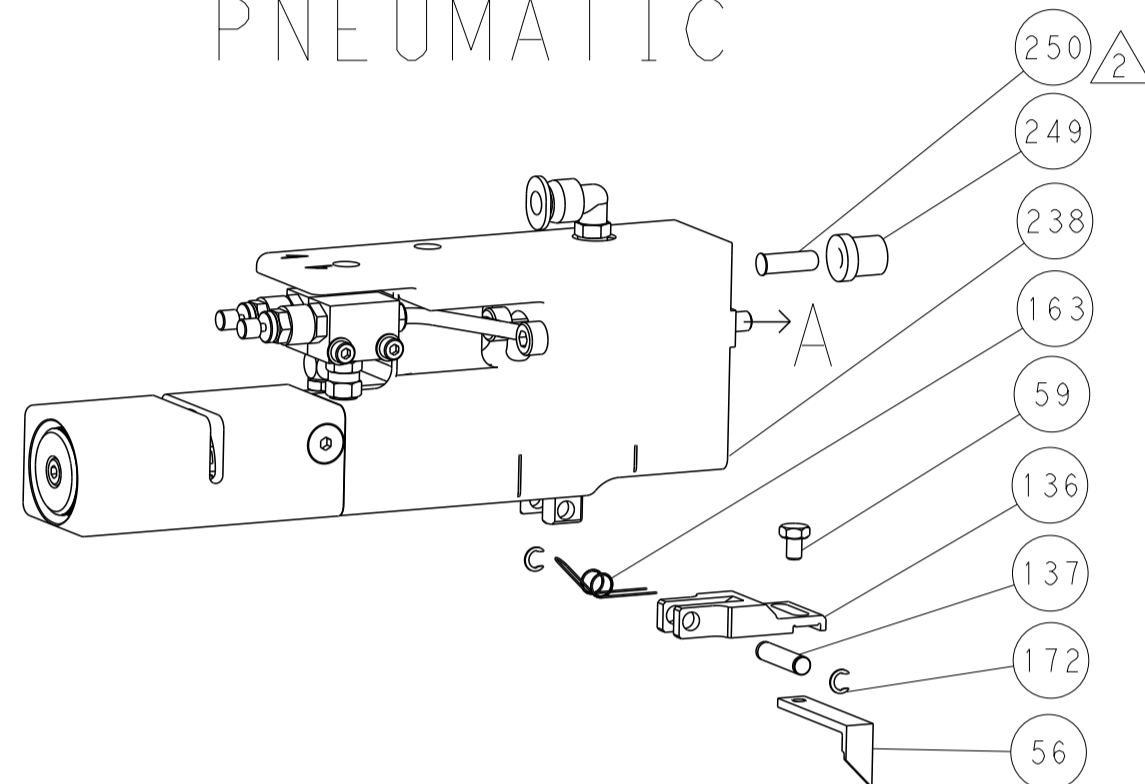
DIMENSIONS:		TOLERANCES UNLESS OTHERWISE SPECIFIED:		OWN: H. HUANG 25SEP2013	TE Connectivity Harrisburg, PA 17105-3608
mm		0 PLC ±		CHK: L. ZHANG 25SEP2013	
		1 PLC ±		APVD: H. GUO 25SEP2013	NAME: Ocean Side Feed Applicator
MATERIAL:		2 PLC ±		PRODUCT SPEC:	SIZE: A1
		3 PLC ±		APPLICATION SPEC:	CAGE CODE: 00779
		4 PLC ±		WEIGHT:	DRAWING NO: C=2266057
		5 PLC ±		RESTRICTED TO:	SCALE: 1:2
		ANGLES FINISH		Customer Accessible Production Drawing	SHEET 3 OF 4

LOC	DIST	REV	DATE	BY	APPV
A	66				

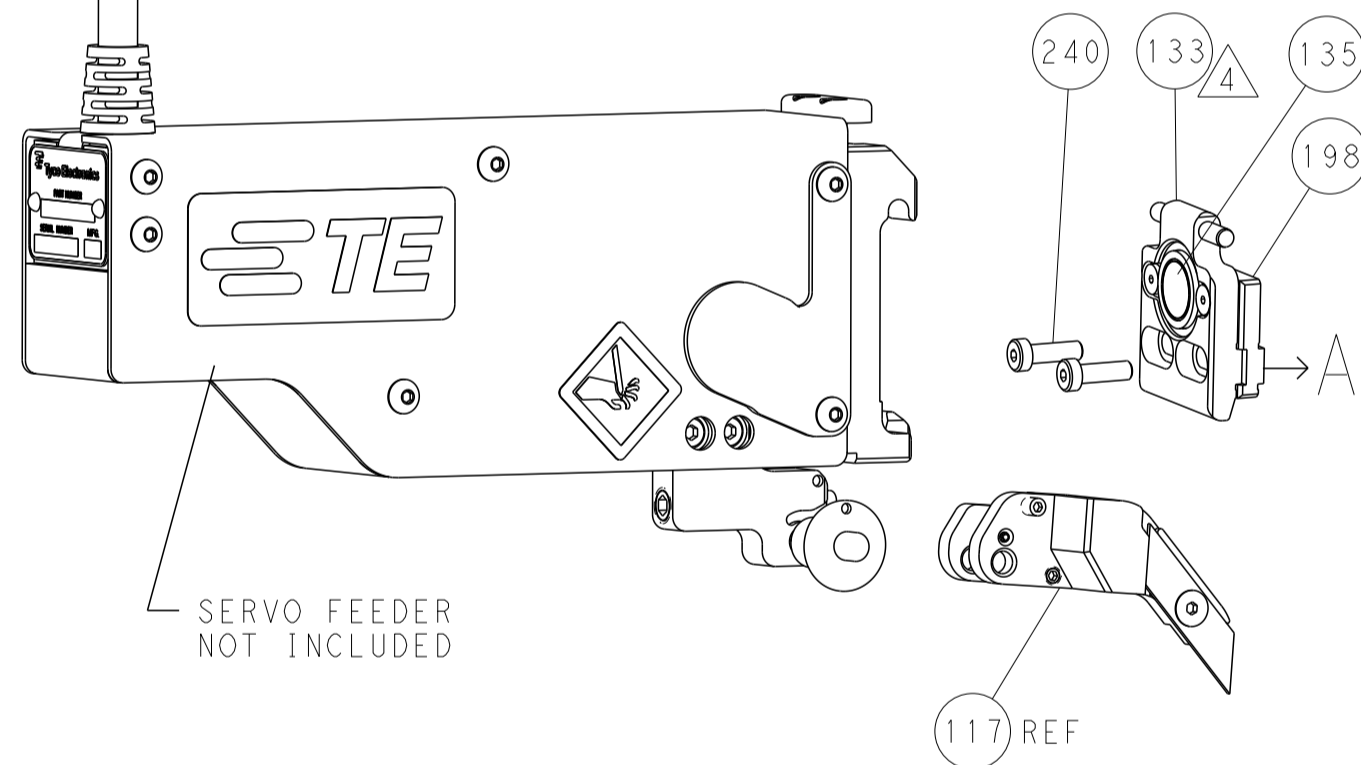
FEED TYPE MECHANICAL



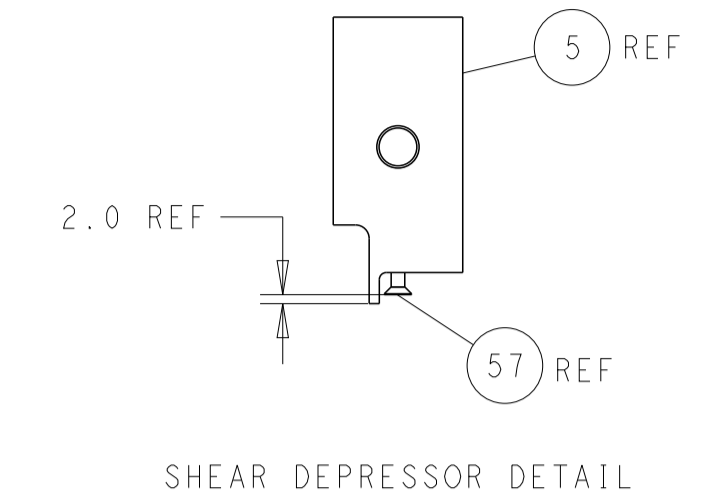
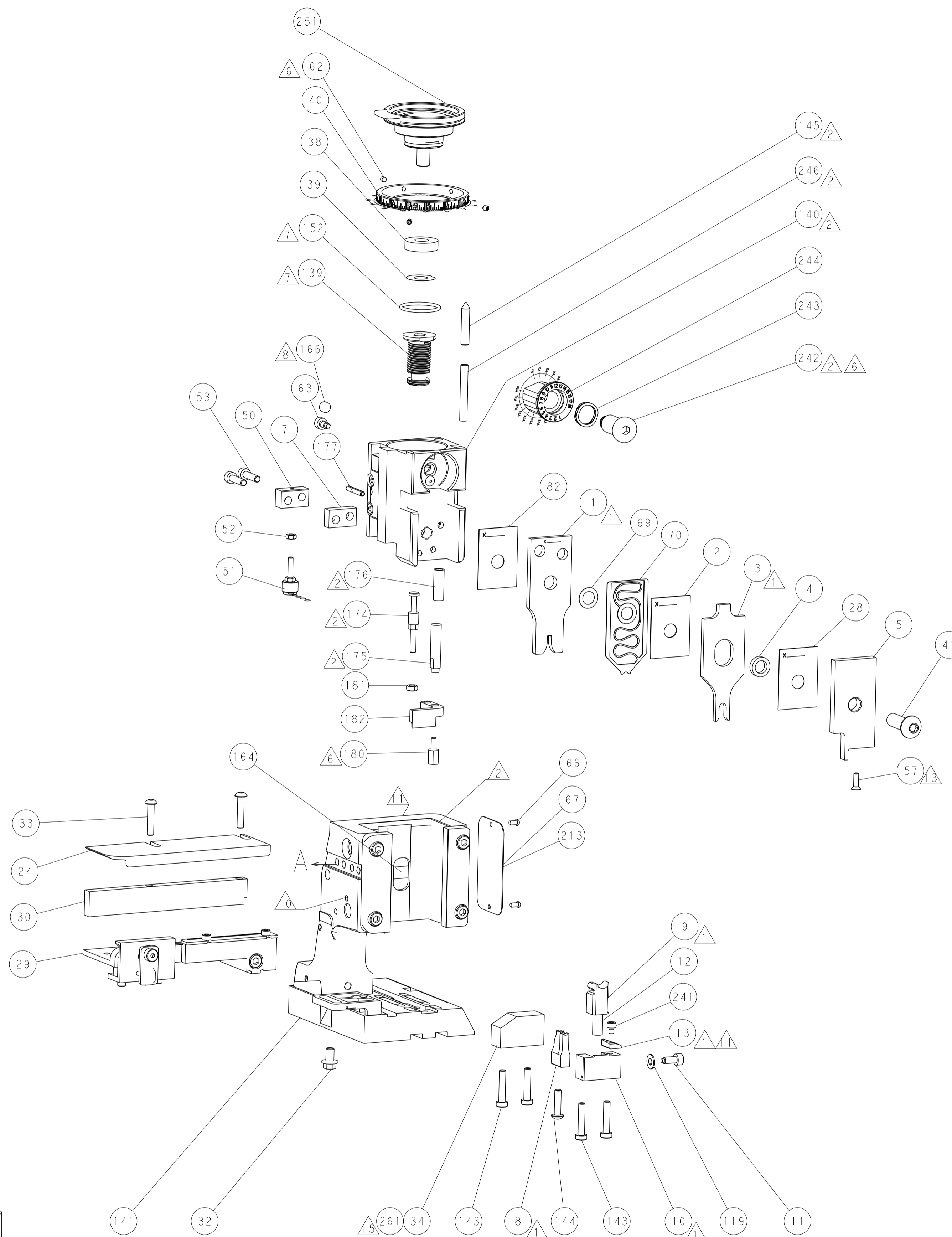
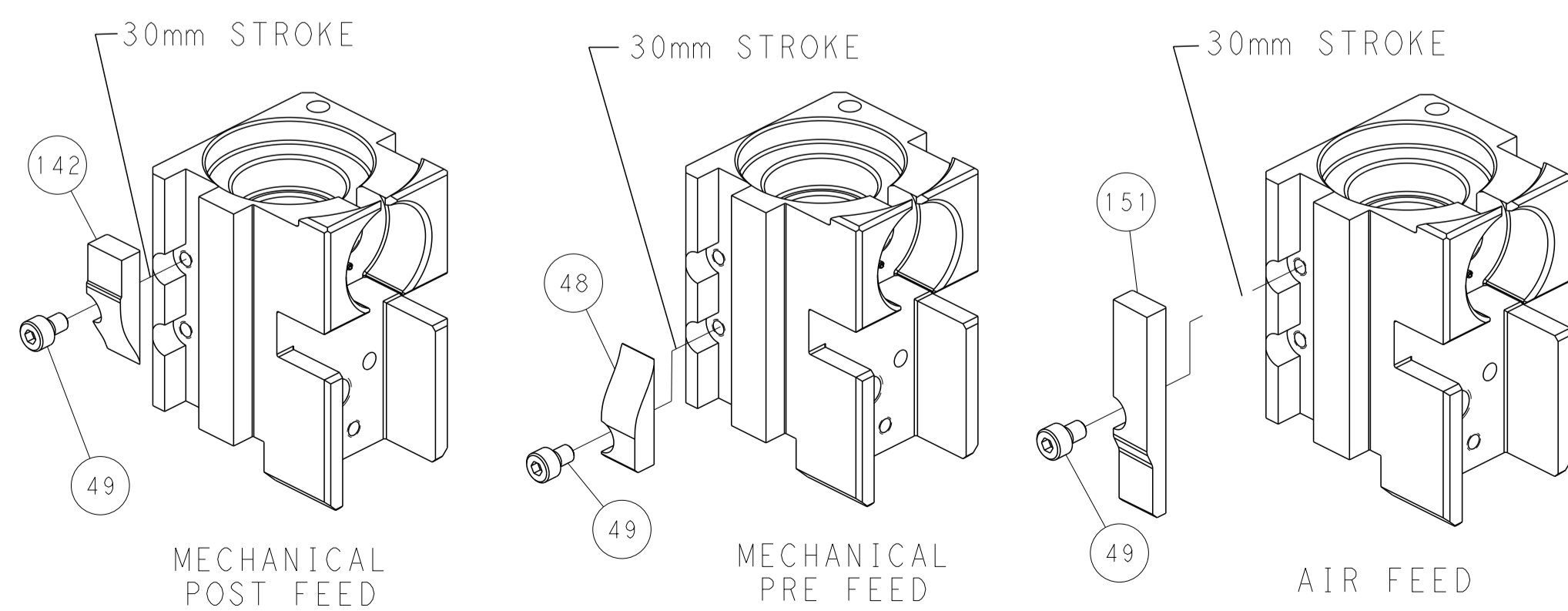
PNEUMATIC



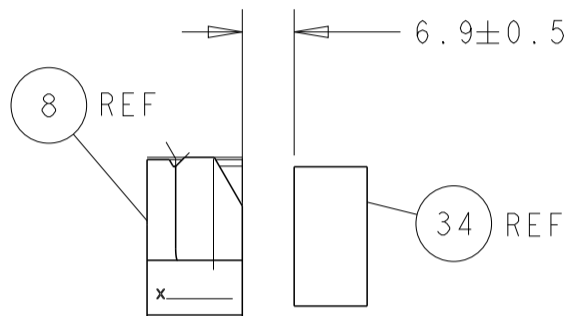
SERVO LATCH PLATE



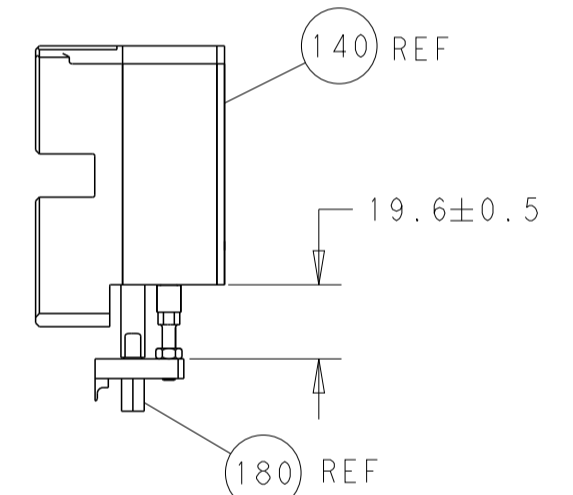
CAM POSITIONS



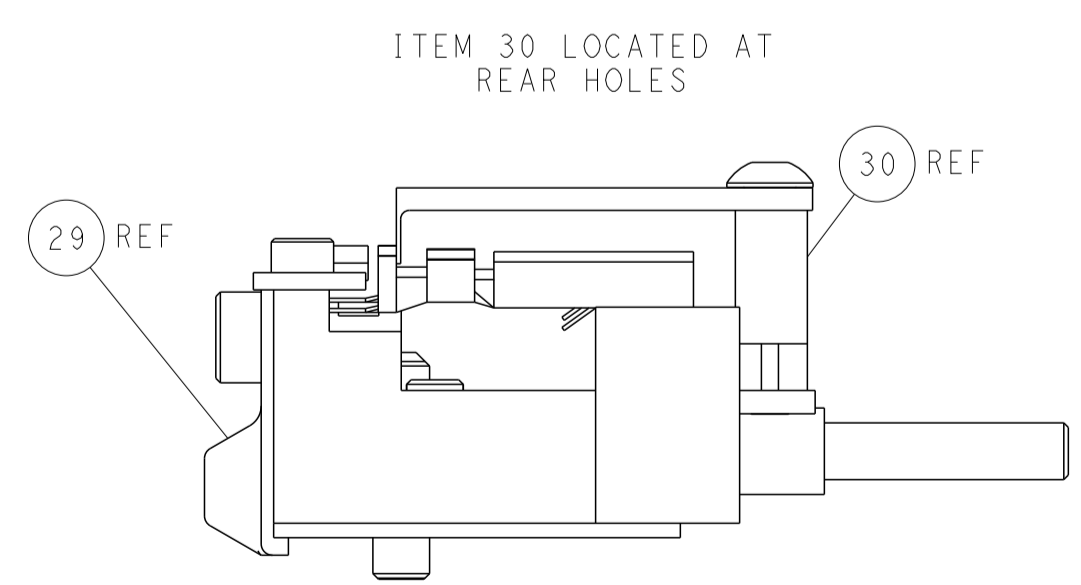
SHEAR DEPRESSOR DETAIL



TERMINAL SUPPORT LOCATION



HOLDDOWN SET-UP



FEED TRACK POSITION GUIDE BY INSULATION BARREL

PACIFIC VERSION
 Shown on sheets 3 of 4 & 4 of 4
 (Atlantic version shown on sheets 1 of 4 & 2 of 4)

DIMENSIONS: mm		TOLERANCES UNLESS OTHERWISE SPECIFIED: 0 PLC ± 1 PLC ± 2 PLC ± 3 PLC ± 4 PLC ± ANGLES ± FINISH		DWN: H. HUANG 25SEP2013 CHK: L. ZHANG 25SEP2013 APVD: J. GUO 25SEP2013		NAME: Ocean Side Feed Applicator SIZE: A1 CAGE CODE: 00779 DRAWING NO: C=2266057		RESTRICTED TO: B1	
MATERIAL:		WEIGHT:		SCALE: 1:2		SHEET: 4 OF 4		REV:	