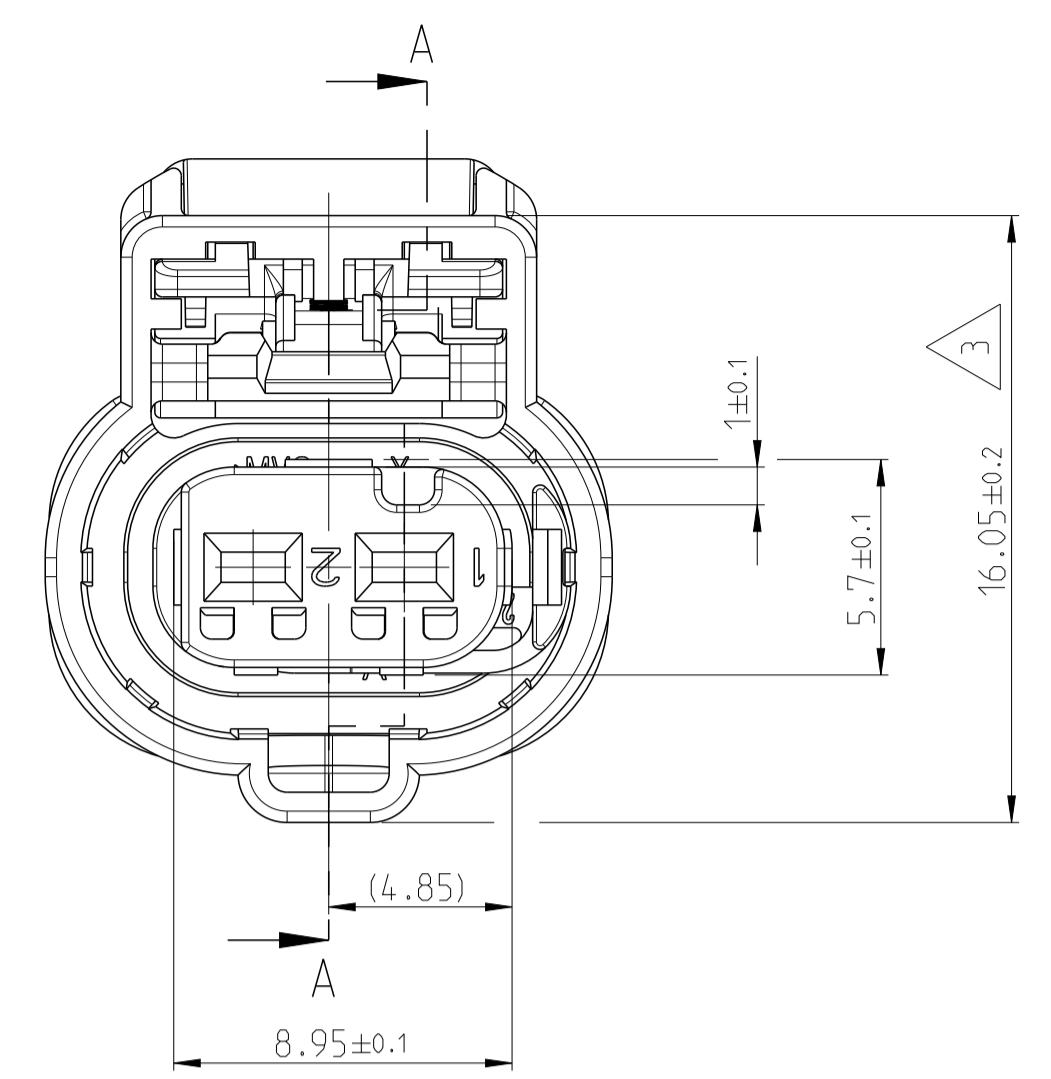
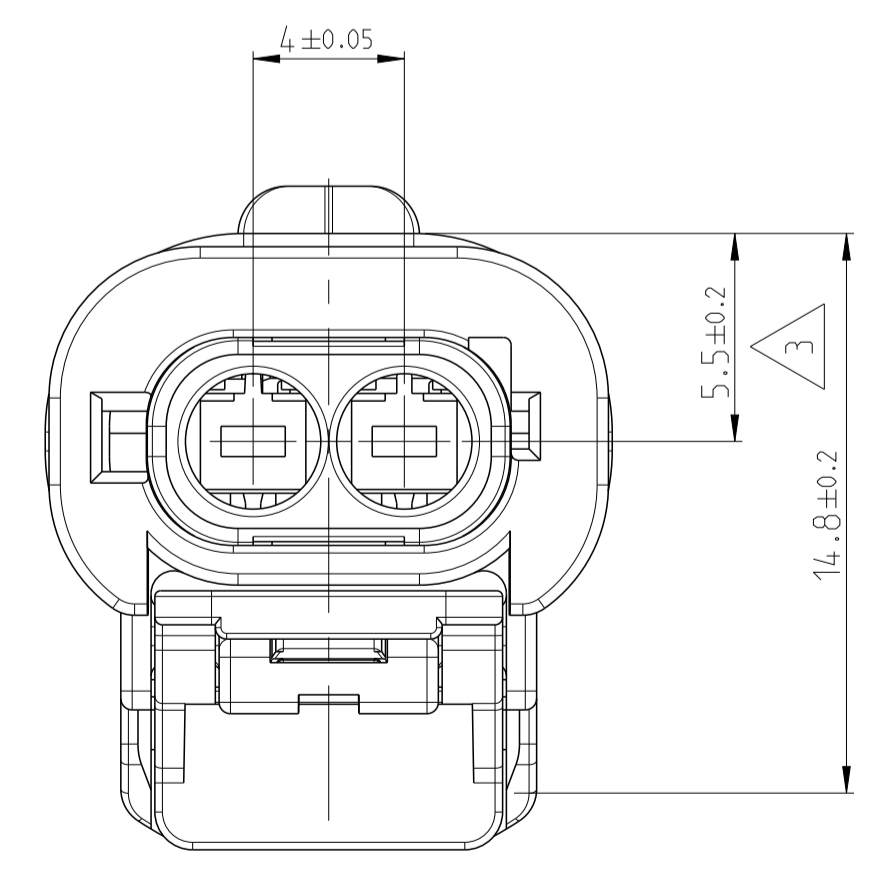
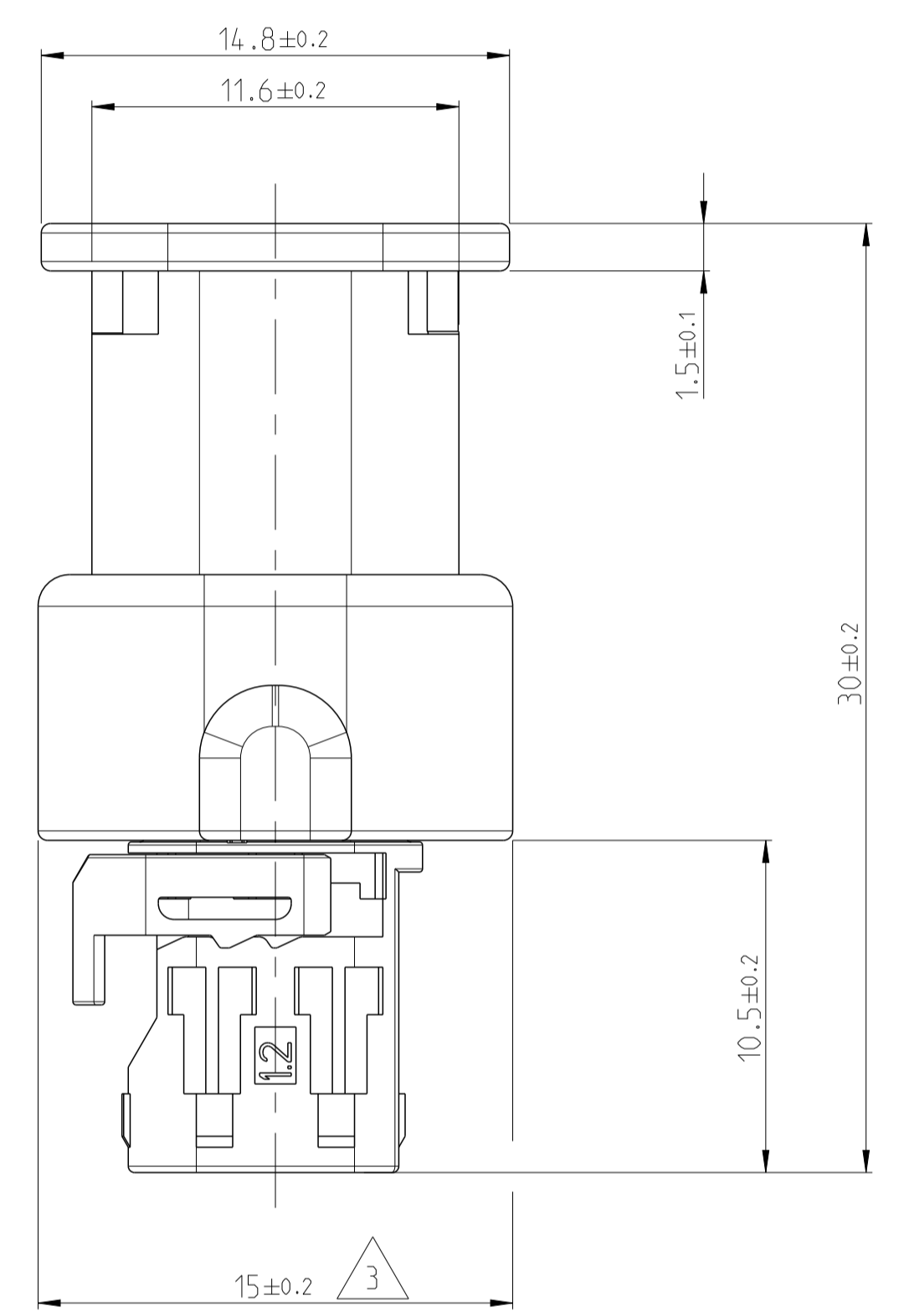
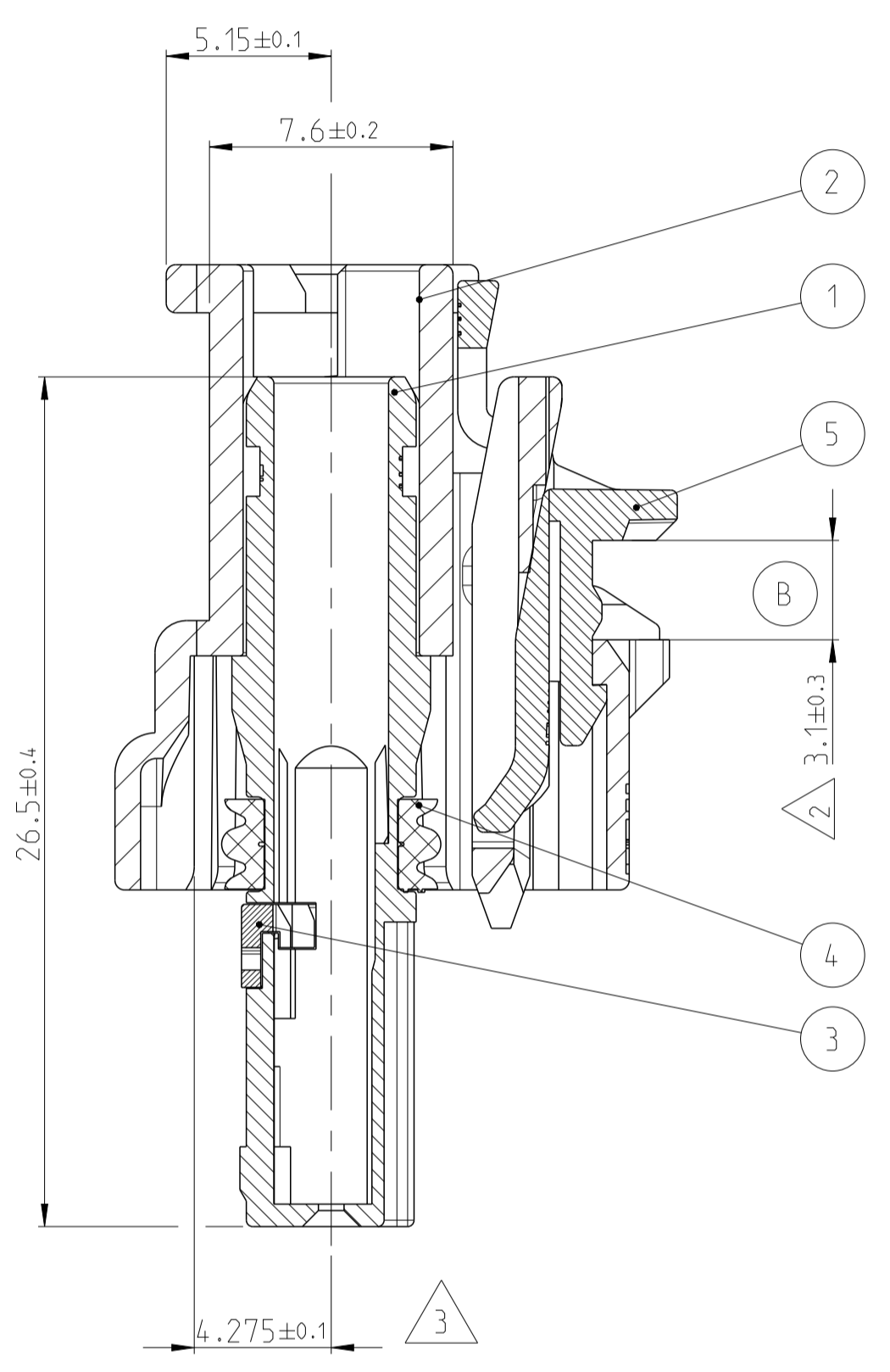
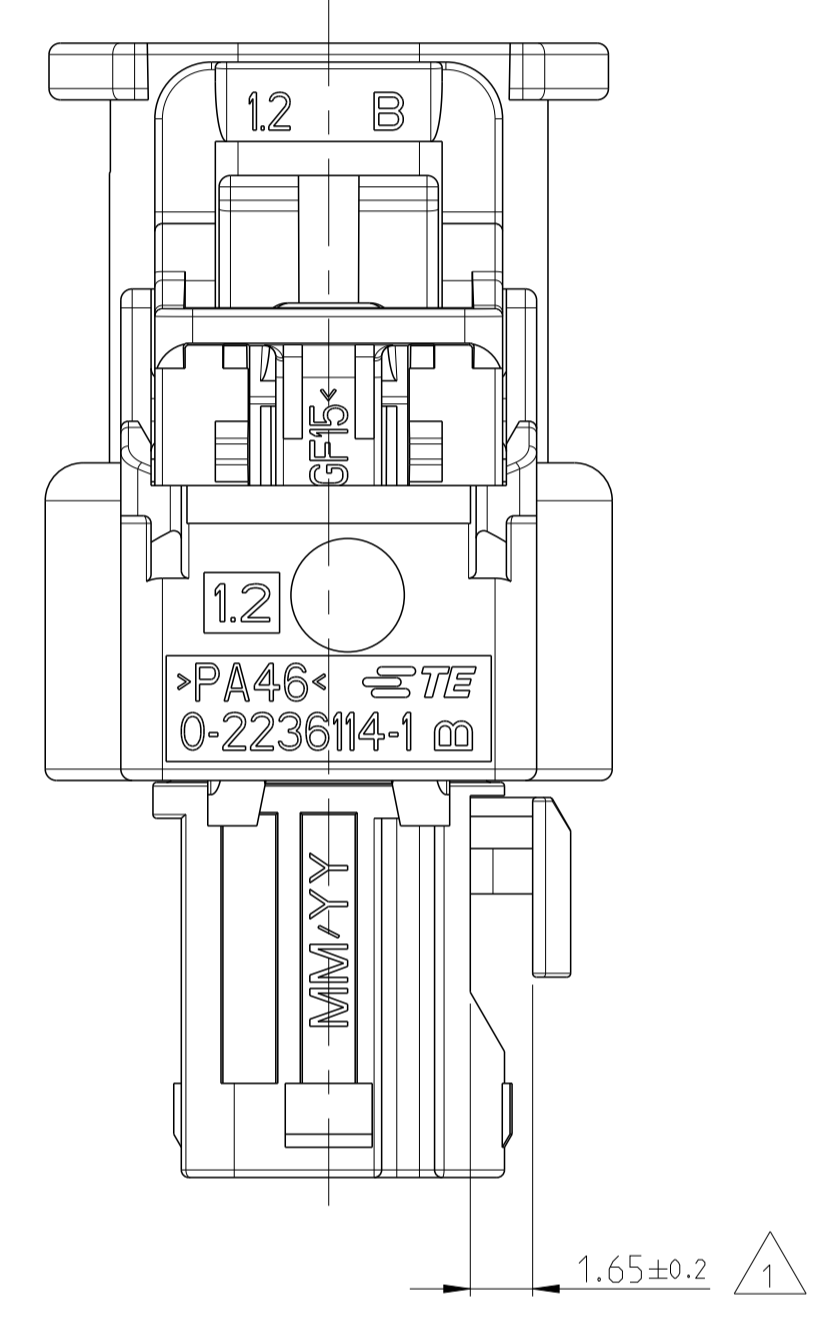


| LOC          | DIST | REVISIONS |             |    |       |
|--------------|------|-----------|-------------|----|-------|
| A1           |      | REV       | DATE        | BY | APPV  |
| PROJECT NR.: |      | A         | 29 JUL 2014 | RW | Thiel |
|              |      | B         | 28 AUG 2014 | AW | Thiel |
|              |      | B1        | 16 DEC 2019 | AW | DM    |

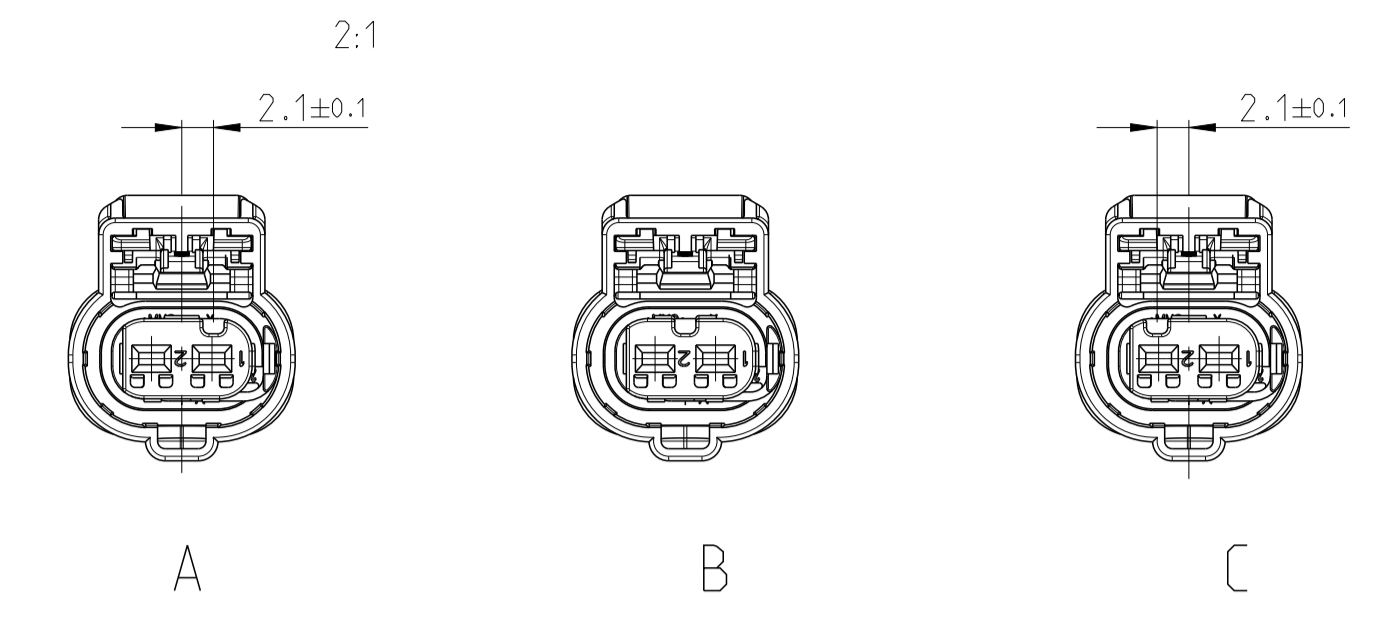


A-A



SUPERSEDED BY 2297795

CODINGS / KODIERUNGEN



- 1 SUPPLY CONDITION: RETAINER ITEM 3 IN PRE-LOCKED POSITION AFTER CONTACT LOADING AND BEFORE CONTACT EXTRACTION TO DRIFT IN THIS DIRECTION (1.65MM)
- 2 SUPPLY CONDITION: CPA ITEM 5 IN PRE-LOCKED POSITION AFTER MATING TO DRIFT (3.1MM) IN THIS DIRECTION (LOCKED) BEFORE PUSHING THE LOCKING LATCH (UNMATING) TO DRIFT (3.1MM) IN REVERSE DIRECTION (PRE-LOCKED)
- 3 WARPAGE PERMITTED TO MAX 0.5
- 4 BULK PACKAGED
- 5 USED TOGETHER WITH CABLE FIXATION 2208939-1

5-...-1 AS SHOWN

- 1 LIEFERZUSTAND: TEIL POS 3 IN VORRSTELLUNG NACH KONTAKTBESTUECKUNG UND VOR KONTAKTENTNAHME IN DIESER RICHTUNG 1.65 MM VERSCHIEBEN
- 2 LIEFERZUSTAND: CPA POS 5 IN VORRSTELLUNG NACH STECKUNG IN DIESER RICHTUNG VERSCHIEBEN (3.1MM) VOR DRUECKEN DES VERRIEGELUNGSHEBELS (TRENNEN) ENTGEGEN DIESER RICHTUNG IN VORRSTELLUNG VERSCHIEBEN (3.1MM)
- 3 VERZUG ZULAESSIG BIS MAX 0.5MM
- 4 VERPACKT ALS SCHUETTGUT
- 5 ZUSAMMEN MIT KABELFIXIERUNG 2208939-1 EINGESETZT

| WIRE / LEITER     |            | HPF 1.2 |  | EXTRACTION TOOL         |                       |
|-------------------|------------|---------|--|-------------------------|-----------------------|
| Ø (MM)            | SIZE (MM²) | TYPE    | CONTACT/WIRE SEAL KONTAKT/LEITERDICHTG | MATING PART GEGENSTUECK | ENTRIEGELUNGSWERKZEUG |
| 1.2-1.4           | 0.35       | FLR     | 2208363 / 967067-2 (YELLOW)            | ACC. TO 114-18679-3     | 3-1579018-4           |
| 1.4-1.7           | 0.5        | FLR     | 2208362 / 967067-1 (GREEN)             |                         |                       |
| 1.7-1.9           | 0.75       | FLR     | 2208360 / 967067-1 (GREEN)             |                         |                       |
| 1.9-2.1           | 1.0        | FLR     | 2208360 / 967067-1 (GREEN)             |                         |                       |
| PLUG BLINDSTOPFEN | -          | -       | 967056-1 (BLUE)                        |                         |                       |

5-...-1 WIE GEZEICHNET

| COD | REV | QTY | DESCRIPTION                    | MATERIAL  | COLOUR             | ITEM |
|-----|-----|-----|--------------------------------|-----------|--------------------|------|
|     |     | X   | CPA                            | PA46-GF15 | RED RAL3003        | 5    |
|     |     | X   | SEAL                           | VMQ       |                    | 4    |
|     |     | X   | RETAINER, 2 POSN               | PA66-GF15 | VIOLET RAL4006     | 3    |
|     |     | X   | PROTEC. COVER MCON 1.2, 2 POSN | PA46      | BLACK RAL9011      | 2    |
| C   | X   |     | 2POS. HPF 1.2, REC HSG, SEALED | PA66-GF15 | LIGHT BLUE RAL5012 | 1    |
| B   |     | X   | 2POS. HPF 1.2, REC HSG, SEALED | PA66-GF15 | NUT BROWN RAL8011  | 1    |
| A   |     | X   | 2POS. HPF 1.2, REC HSG, SEALED | PA66-GF15 | BLACK RAL9011      | 1    |

TOLERANCING ISO 8015  
 TOLERIERUNG ISO 8015

DIESE ZEICHNUNG IST EIN KONTROLLIERTES DOKUMENT.  
 DIMENSIONING AND TOLERANCING PER GPS (ISO STANDARDS)

THIS DRAWING IS A CONTROLLED DOCUMENT.  
 DIMENSIONING AND TOLERANCING PER GPS (ISO STANDARDS)

DMN: R.W. IENZLERS  
 CHK: F. Thiel  
 DATE: 29 JUL 2014

TE Connectivity

NAME: 2 POS., HPF 1.2, REC HSG, ASSY, SEALED  
 2 POL., HPF 1.2, FL.KONT.GEH., KOMPL., DICHT

SIZE: A1  
 CAGE CODE: 00779  
 DRAWING NO: 2236116

RESTRICTED TO NUR FÜR: -

Customer Drawing / KUNDENZEICHNUNG  
 SCALE: 5:1  
 SHEET: 1 OF 1  
 REV: B1