

THIS DRAWING IS UNPUBLISHED.

RELEASED FOR PUBLICATION

XXXXX2011

© COPYRIGHT 2011

BY Tyco Electronics Japan G.K.

ALL RIGHTS RESERVED.

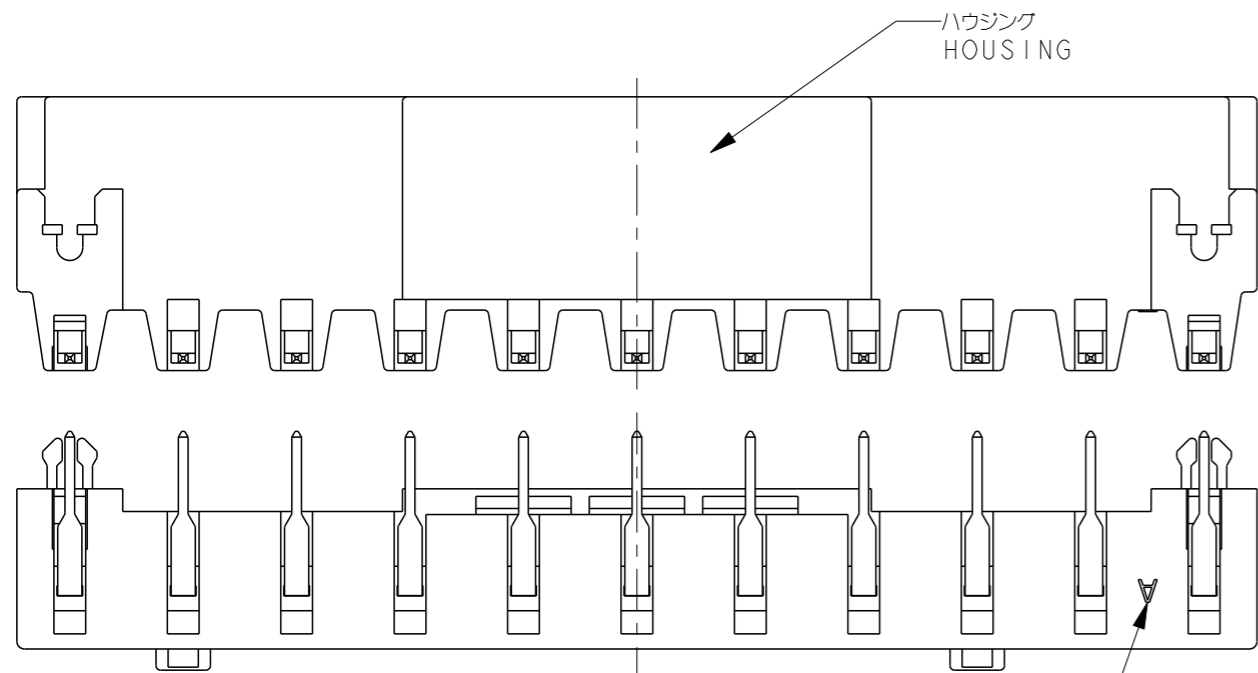
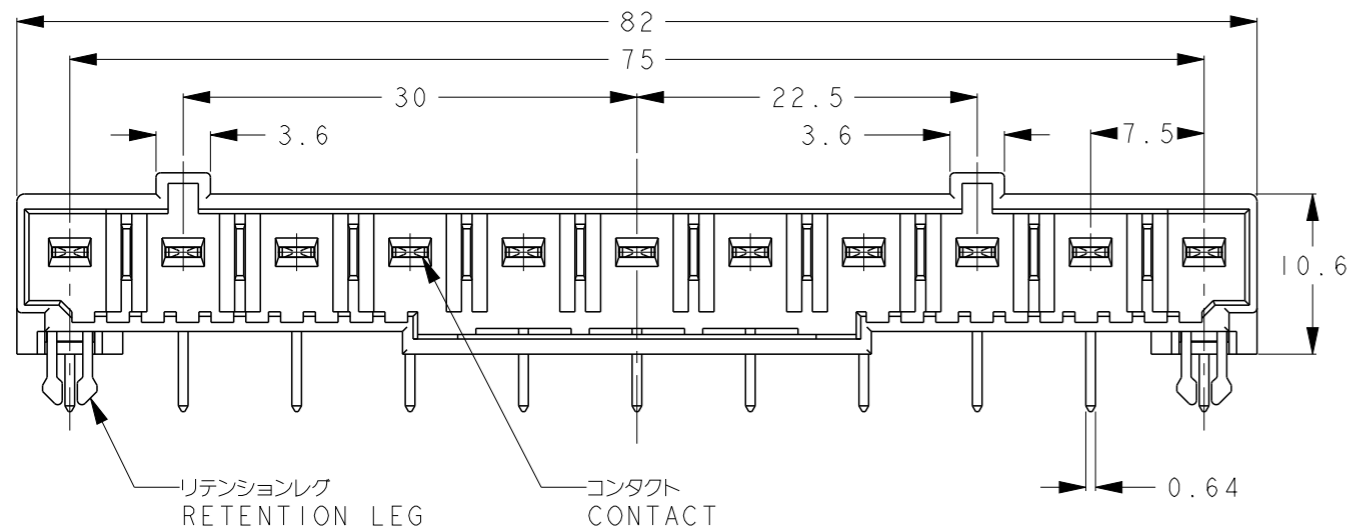
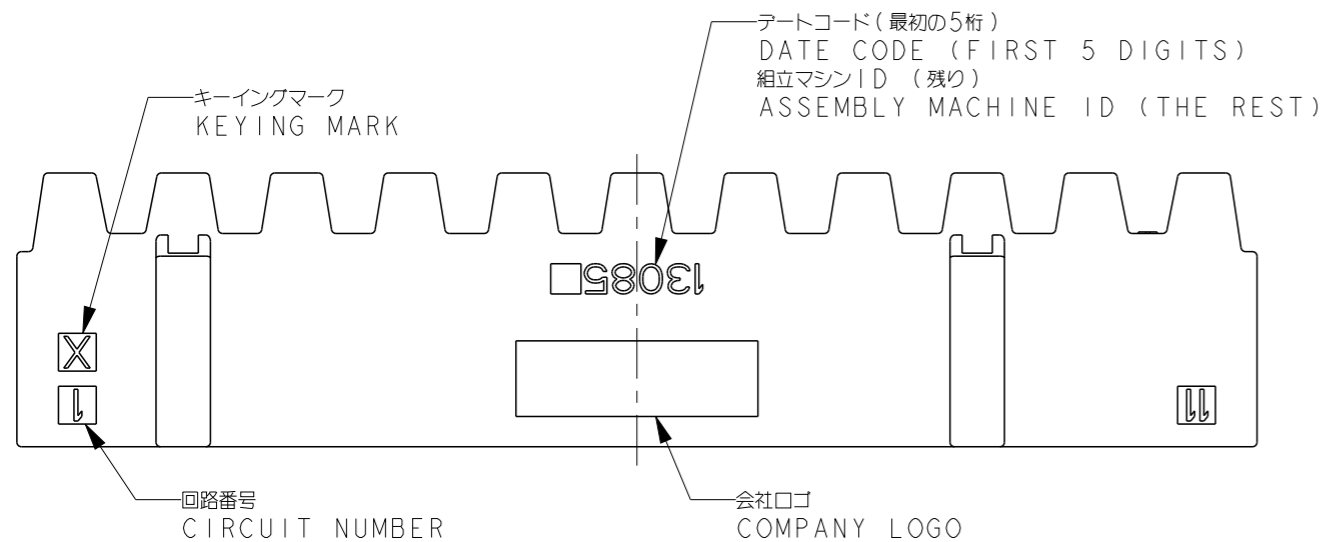
LOC
J

DIST
-

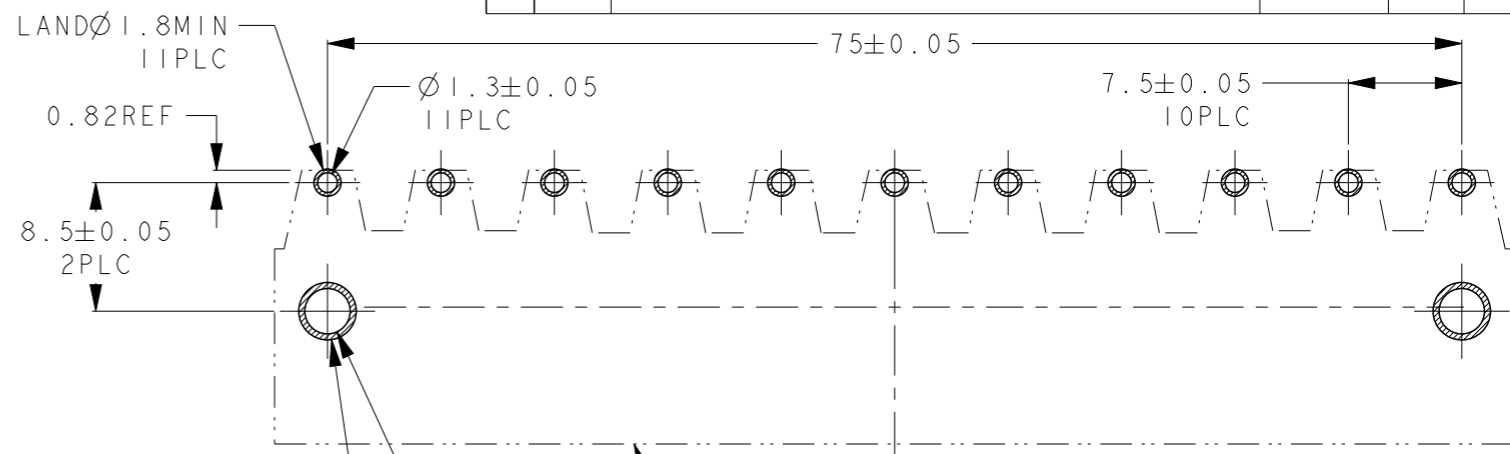
REVISIONS

変更

| P | LTR | DESCRIPTION | DATE | DWN | APVD |
|---|-----|-------------|------------|-----|------|
| | E | REVISED | 27JULY2023 | H.O | T.S |



1-2229803-1 (11POSN KEYING: X)



11極 参考基板レイアウト
11POSN RECOMMENDED PCB LAYOUT

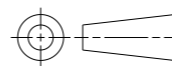
- MATERIAL
HOUSING: THERMOPLASTIC POLYESTER, COLOR: BLACK.
CONTACT: COPPER ALLOY
RETENSION LEG: COPPER ALLOY
- PLATING
CONTACT POINT: UNDER Ni PLATING.
OVER Au PLATING.
RETENSION LEG AND TINE
: UNDER Ni PLATING.
OVER Tin PLATING.

- 材料
ハウジング: 熱可塑性ポリエステル, 色: 黒
コンタクト: 銅合金
リテンションレグ: 銅合金
- めっき
コンタクト接点部: ニッケル下地めっき上に金めっき
リテンションレグおよびコンタクトはんだ付け部: ニッケル下地めっき上に錫めっき

| | | |
|-----------------|-----------|-------------------|
| Y | 10 | 1-2229803-3 |
| Y | 7 | 1-2229803-2 |
| X | 11 | 1-2229803-1 |
| X | 3 | 3-2229803-1 |
| キーイング KEYING | 極数 POS | 型番 PART NUMBER |

THIS DRAWING IS A CONTROLLED DOCUMENT.

DIMENSIONS:
単位: 概
mm



MATERIAL
材料 SEE NOTE

TOLERANCES UNLESS OTHERWISE SPECIFIED:

| | |
|--------|--------------|
| 一般公差 | ± 0.3 |
| 0 PLC | \pm |
| 1 PLC | ± 0.5 |
| 2 PLC | ± 0.13 |
| 3 PLC | ± 0.013 |
| 4 PLC | ± 0.0013 |
| ANGLES | ± 5 |

FINISH
仕上 SEE NOTE

DWN Y. OKADA 20FEB2013
CHK S. YAMADA 20FEB2013
APVD N. YAMASAKI 20FEB2013
PRODUCT SPEC
製品規格 108-78997
APPLICATION SPEC
取付適用規格 411-78272
WEIGHT -

Customer Drawing

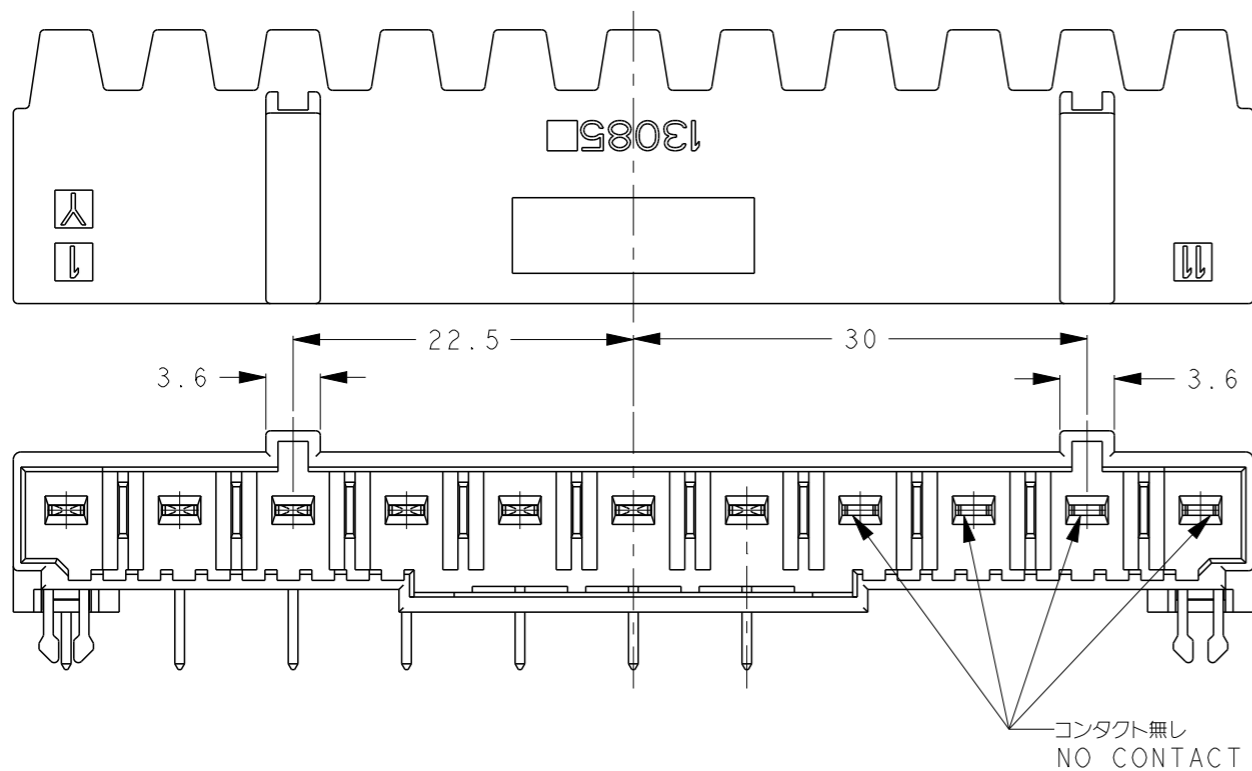


TE Connectivity

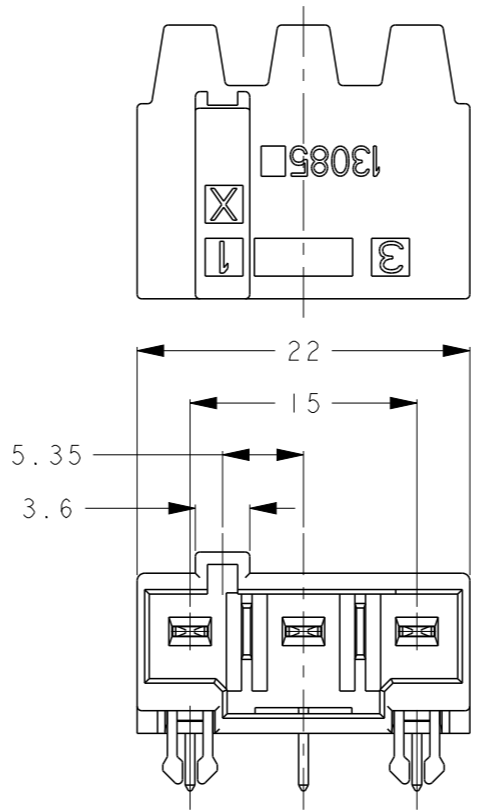
| | | | |
|---|--------------------|-------------------------|-----------------|
| NAME 名称 DYNAMIC D3950 HEADER ASSEMBLY | | RESTRICTED TO - | |
| SIZE A3 | CAGE CODE 00779 | DRAWING NO C-2229803 | SCALE 尺度 2:1 |
| SHEET 1 OF 2 | | REV E | |

| | |
|-----|------|
| LOC | DIST |
| J | - |

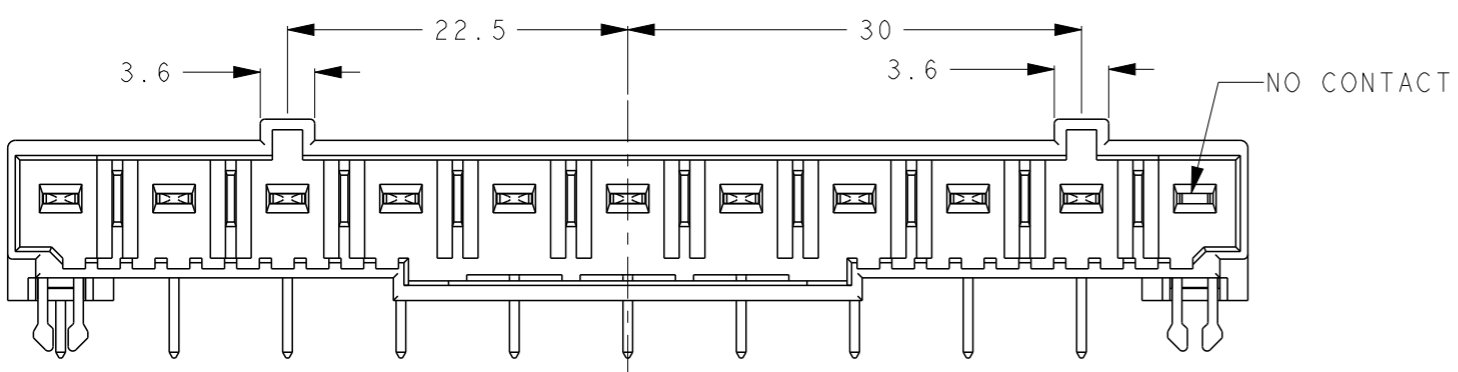
| REVISIONS | | | | |
|-----------|-----|-------------|------|------|
| 変更 | | | | |
| P | LTR | DESCRIPTION | DATE | APVD |
| | | SEE SHEET 1 | | |
| | | | | |
| | | | | |



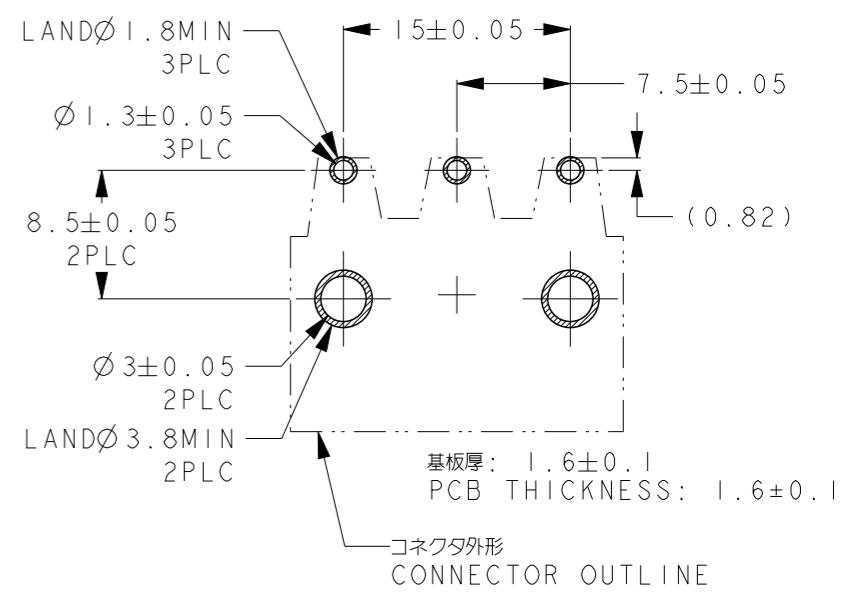
1-2229803-2 (7 POSN KEYING: Y)



3-2229803-1 (3 POSN KEYING: X)




1-2229803-3 (10 POSN KEYING: Y)



3極 参考基板レイアウト

3 POSN RECOMMENDED PCB LAYOUT

| | | | | |
|---|--------------------------|---|---|--|
| THIS DRAWING IS A CONTROLLED DOCUMENT. | | DWN Y. OKADA 20FEB2013 |  TE Connectivity | |
| DIMENSIONS: 単位: 丸 mm | | CHK S. YAMADA 20FEB2013 | | |
| TOLERANCES UNLESS OTHERWISE SPECIFIED: 一般公差 ±0.3 | | APVD N. YAMASAKI 20FEB2013 | NAME 名称 DYNAMIC D3950 HEADER ASSEMBLY | |
| 0 PLC ± | | PRODUCT SPEC 製品規格 108-78997 | SIZE A300779 | |
| 1 PLC ±0.5 | | APPLICATION SPEC 取付適用規格 411-78272 | DRAWING NO 番号 C-2229803 | |
| 2 PLC ±0.13 | | WEIGHT - | RESTRICTED TO - | |
| 3 PLC ±0.013 | | | SCALE 尺度 2:1 | |
| 4 PLC ±0.000J | | | SHEET 2 OF 2 | |
| ANGLES ±5 | | | REV E | |
| MATERIAL 材料 SEE NOTE | FINISH 仕上 SEE NOTE | Customer Drawing | | |